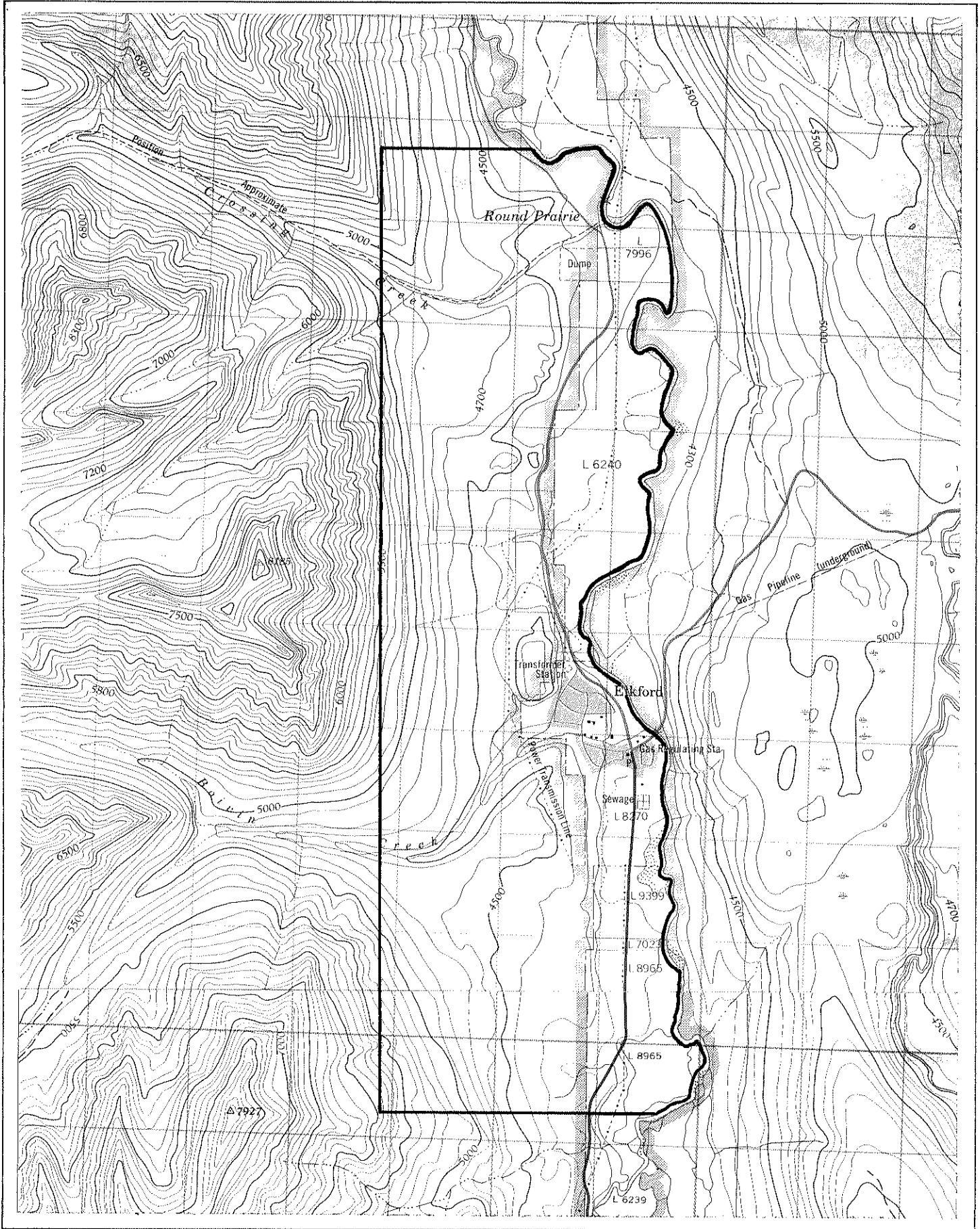




Province of
British Columbia
 Ministry of Mines and
 Petroleum Resources
 Mineral Resources Branch

FILE 113 (449)
 SKETCH 1 of 2



SCALE: 1: 50 000

CONTOUR INTERVAL: 100 FEET

MINING DIVISION(S) FORT STEELE	MINERAL TITLES DRAUGHTING ROOM, VICTORIA, B.C.
LAND DISTRICT (S) KOOTENAY	PREPARED BY: KEVIN TOWNSEND
MAP NO(S) 82 G/15W, 82 J/2W	DATE: JULY 13, 1977