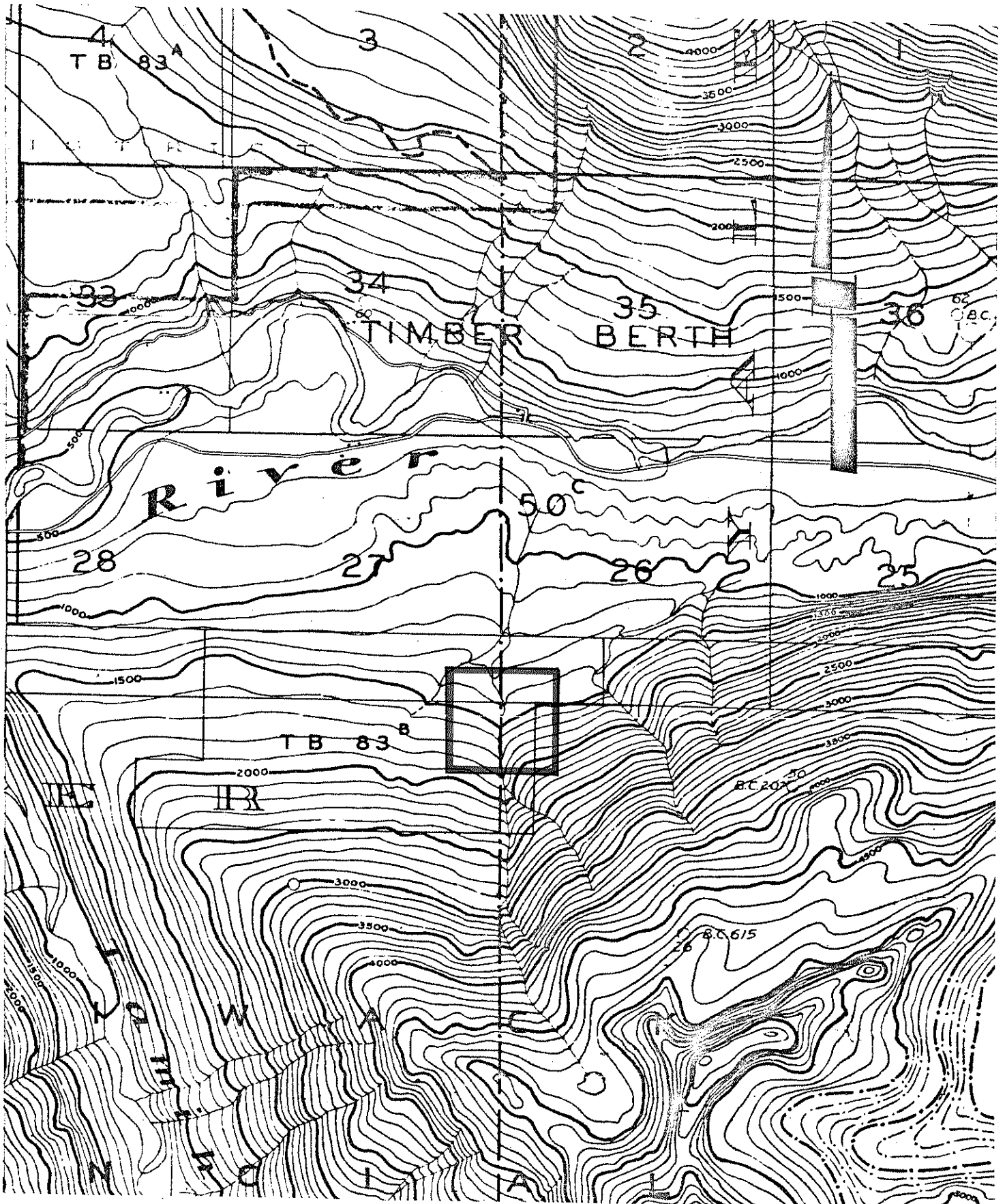




THE GOVERNMENT OF
THE PROVINCE OF BRITISH COLUMBIA

FILE NO. (351)
.113(346)

DEPARTMENT OF MINES AND PETROLEUM RESOURCES
VICTORIA



NEW WESTMINSTER	MINI 3 DIVISION
NEW WESTMINSTER & YALE	LAND DISTRICT
MINERAL MAP NO.(S)	92H/4W
SCALE:	1/2 MILE = 1 INCH
M.I.D.R.; DRAWN BY:	KEVIN TOWNSEND 7-8-74