

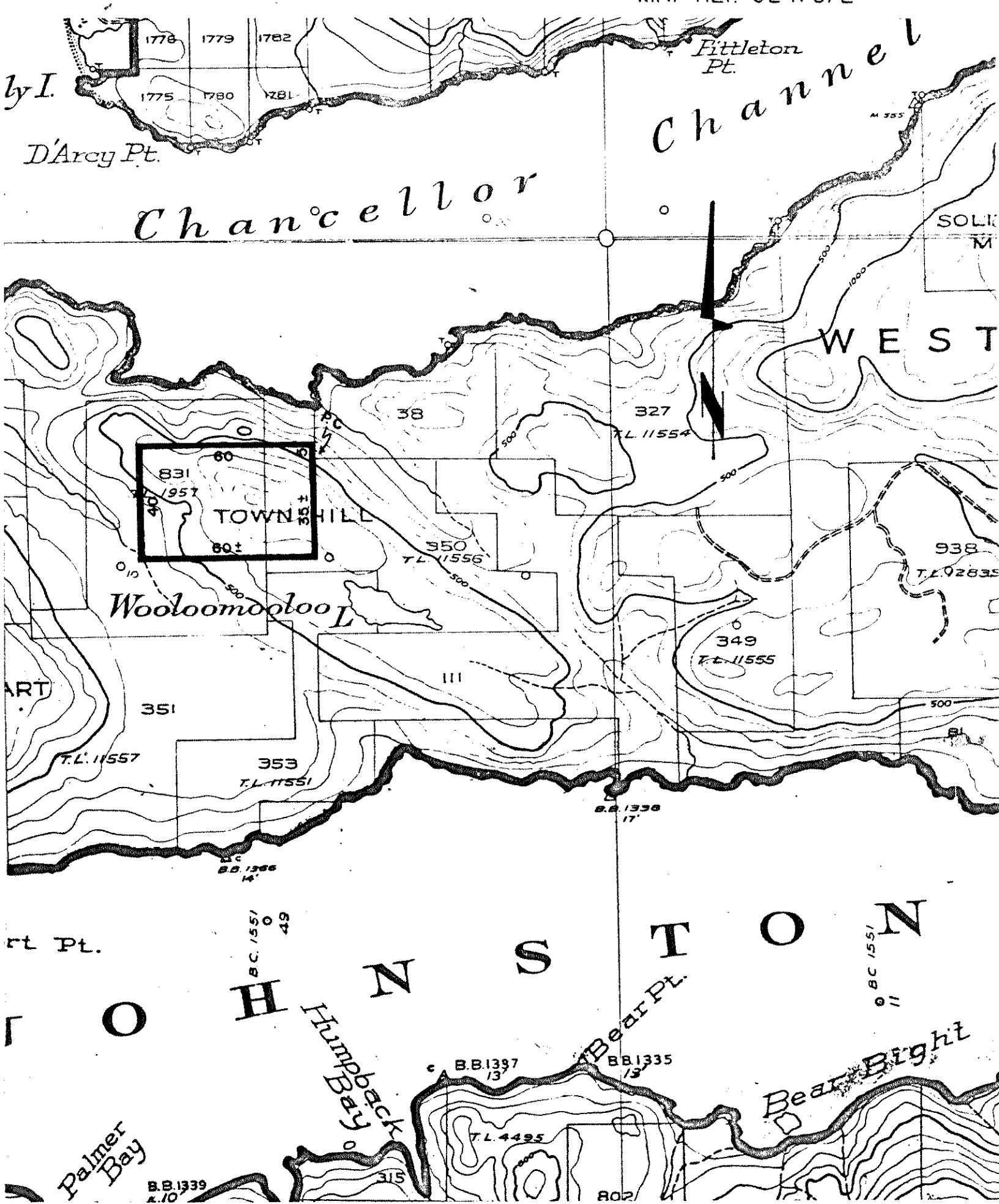
# GROWTH AND YIELD

## MANAGED STAND INSTALLATION NO. 37

(WITHIN LOTS 38 & III, RANGE I, COAST LAND DISTRICT)

SCALE: 40 chains = 1 inch

MAP REF. 92 K 5/E



### Description

"Commencing at the southeast corner of Lot 38, Range 1, Coast Land District; thence northerly along the easterly boundary of said Lot 38 a distance of 5 chains; thence due west 60 chains; thence due south 40 chains; thence due east 60 chains more or less to a point due south of the aforesaid southeast corner of Lot 38; thence north 35 chains more or less to said corner, being the point of commencement."