

First Status Edition produced by Surveys and Mapping Branch,
 Dept. of Lands and Forests, Victoria, B.C. 1958.
 Second status edition produced 1965-66.

RELIABILITY

East half of sheet: planimetry compiled from B.C. Prov.
 Govt. air surveys interim mapping, 1952, 1954-55. B.C.
 air photos 1948-50. Contours compiled from mapping
 by Dept. of Mines & Technical Surveys, Ottawa, 1952.

West half of sheet: planimetry and contours compiled from
 B.C. Prov. Govt. topographical surveys 1958.

Culture revised from B.C. air photos, 1959, 1962 and 1964-65.

Copies of this map may be obtained from Geographic
 Division, Surveys and Mapping Branch, Department
 of Lands, Forests, and Water Resources, Victoria, B.C.

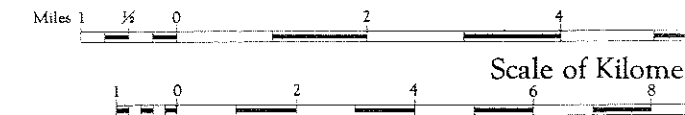
REFERENCE

- Land alienated or covered by application
under the Land Act
- Surveyed Timber Lease, Licence, or Berth
- Indian Reserve
- Government Reserve
- Land District Boundary
- Provincial Forest Boundary
- Tree Farm Licence
- Municipality
- Water Supply Area
- Park
- Park less than 7 acres
- Campsite or Picnic Site
- Forest Service Lookout
- Post Office
- School
- Church
- Hospital
- Building
- Cemetery
- Mine
- Dyke



ASHCR
 BRITISH COLU

Scale 1:126,720 or 1 In



Magnetic Declination approximately 23°25' East
 Decreasing approximately 3'09"