

UNIVERSITY OF B.C. RESEARCH FOREST

PLAN OF PART

TOWNSHIPS 3 AND 4, RANGE 5 WEST OF 7<sup>TH</sup> MERIDIAN

PART OF TOWNSHIP 12, E.C.M.

NEW WESTMINSTER DISTRICT

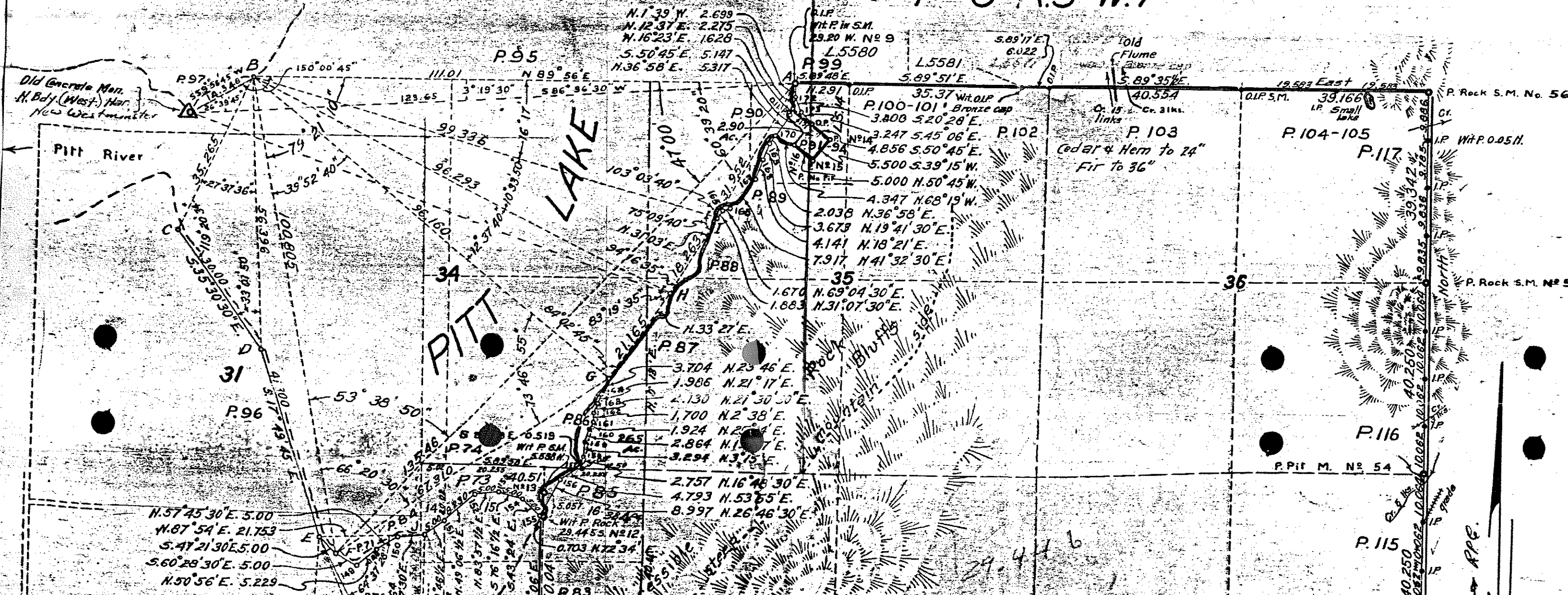
SCALE: 1 INCH = 20 CHAINS

184  
D149019

NOTE: THE AREA OUTLINED IN RED IS NOW DESIGNATED DISTRICT LOT 6110, GROUP ONE, NEW WESTMINSTER DISTRICT.

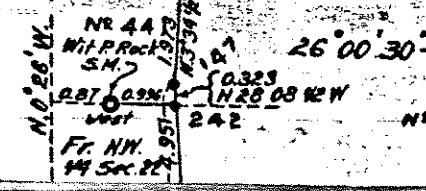
26 February 1949.

TP. 5 R. 5 W. 7



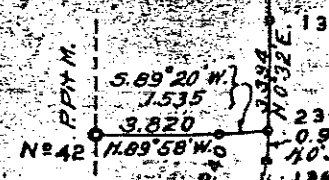
**DETAIL C**

Scale: 1 inch = 3 chains 60' 14" 20"



**DETAIL B**

Scale: 1 in = 6 chains



**DETAIL**

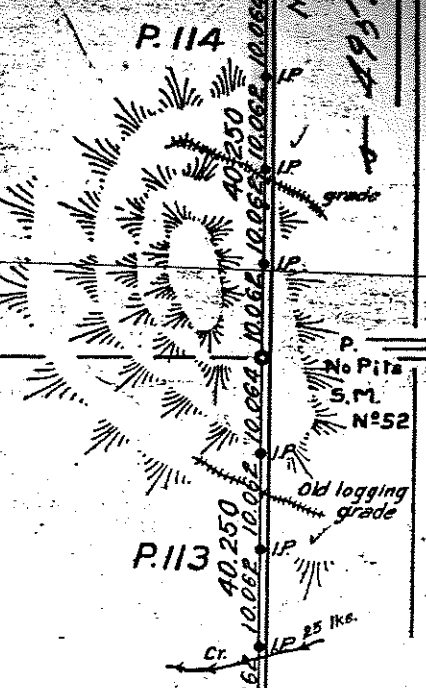
Scale: 1 in = 6 chains



L. 6110

4.0  
9773.7 ACRES

T.P. 4 R.5 W.7



Scattered Fir, Cedar 2, Vine Maple, Willow and Altered brush

M.C. Victory No 2

M.C. Victory No 3

TP 4 R.4 W.7

M.C. Victory No 1

M.C. Victory No 4

M.C. Victory No 5

M.C. Victory No 6

M.C. Victory No 7

M.C. Victory No 8

M.C. Victory No 9

M.C. Victory No 10

M.C. Victory No 11

M.C. Victory No 12

M.C. Victory No 13

M.C. Victory No 14

M.C. Victory No 15

M.C. Victory No 16

M.C. Victory No 17

M.C. Victory No 18

M.C. Victory No 19

M.C. Victory No 20

M.C. Victory No 21

M.C. Victory No 22

M.C. Victory No 23

M.C. Victory No 24

M.C. Victory No 25

M.C. Victory No 26

M.C. Victory No 27

M.C. Victory No 28

M.C. Victory No 29

M.C. Victory No 30

M.C. Victory No 31

M.C. Victory No 32

M.C. Victory No 33

M.C. Victory No 34

M.C. Victory No 35

M.C. Victory No 36

M.C. Victory No 37

M.C. Victory No 38

M.C. Victory No 39

M.C. Victory No 40

M.C. Victory No 41

M.C. Victory No 42

M.C. Victory No 43

M.C. Victory No 44

M.C. Victory No 45

M.C. Victory No 46

M.C. Victory No 47

M.C. Victory No 48

M.C. Victory No 49

M.C. Victory No 50

M.C. Victory No 51

M.C. Victory No 52

M.C. Victory No 53

M.C. Victory No 54

M.C. Victory No 55

M.C. Victory No 56

M.C. Victory No 57

M.C. Victory No 58

M.C. Victory No 59

M.C. Victory No 60

M.C. Victory No 61

M.C. Victory No 62

M.C. Victory No 63

M.C. Victory No 64

M.C. Victory No 65

M.C. Victory No 66

M.C. Victory No 67

M.C. Victory No 68

M.C. Victory No 69

M.C. Victory No 70

M.C. Victory No 71

M.C. Victory No 72

M.C. Victory No 73

M.C. Victory No 74

M.C. Victory No 75

M.C. Victory No 76

M.C. Victory No 77

M.C. Victory No 78

M.C. Victory No 79

M.C. Victory No 80

M.C. Victory No 81

M.C. Victory No 82

M.C. Victory No 83

M.C. Victory No 84

M.C. Victory No 85

M.C. Victory No 86

M.C. Victory No 87

M.C. Victory No 88

M.C. Victory No 89

M.C. Victory No 90

M.C. Victory No 91

M.C. Victory No 92

M.C. Victory No 93

M.C. Victory No 94

M.C. Victory No 95

M.C. Victory No 96

M.C. Victory No 97

M.C. Victory No 98

M.C. Victory No 99

M.C. Victory No 100



**DETAIL A**  
SCALE: 1 IN = 3 CHAINS

P. 57-58

**TP. 42 ECM**

Traverse From Post #27  
To Station # 115

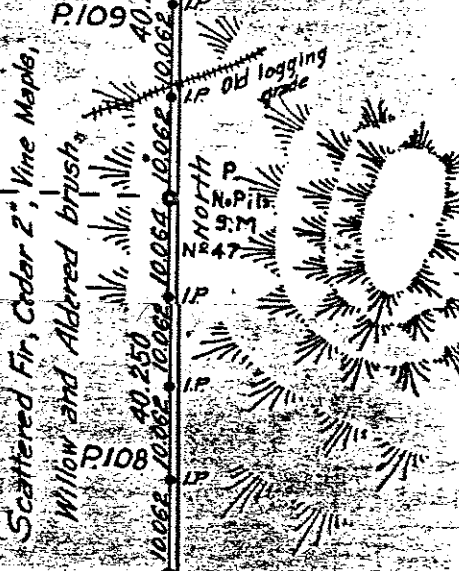
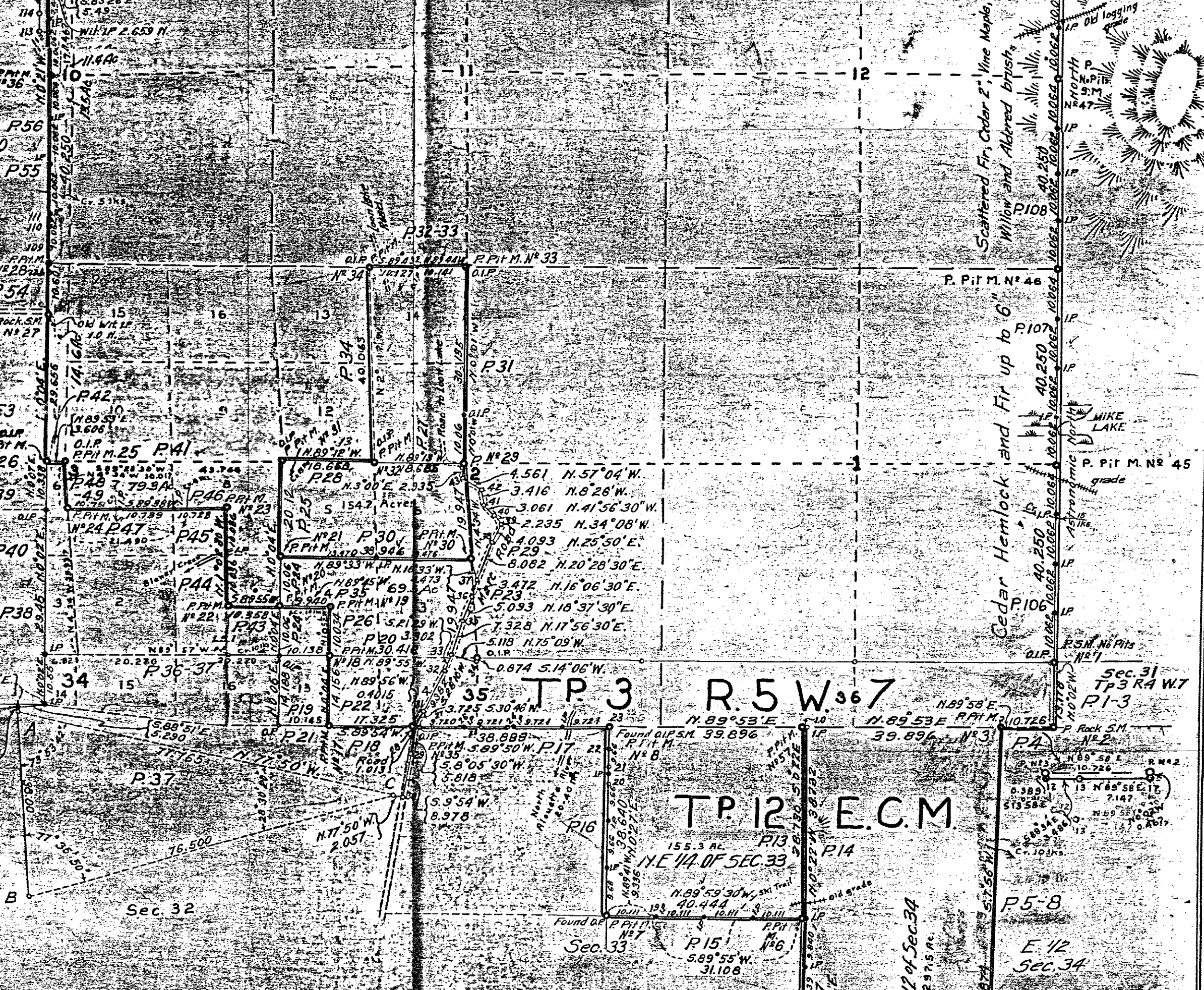
P27-228	8.366	N.0°04' E.
228-P28	2.235	N.1°56' W.
P28-224	2.235	S.1°56' E.
224-109	4.966	N.0°04' E.
109-110	4.485	N.0°15' E.
110-LP	2.849	N.3°31' W.
LP-110	2.849	S.3°31' E.
110-111	1.340	N.0°26' E.
111-112	38.777	N.0°04' E.
112-113	2.434	N.82°52' W.
113-114	3.666	N.0°02' E.
114-115	5.933	N.0°37' E.

6

**TP. 3**

**R. 5 W. 367**

**TP. 12 E.C.M.**



Scattered Fir, Cedar 2", Vine Maple,  
Willow and Altered brush,  
Cedar Hemlock and Fir up to 6"

Sec. 31  
TP 3 RA W 7  
P. 1-3  
P. 5-8  
E. 12  
Sec. 34

Sec. 33

Sec. 32

155.3 AC.  
N.E. 1/4 OF SEC. 33

P. 15  
5.89°55' W.  
31.108

Found O.P. SM. 39.896  
P. 13  
P. 14

N. 89°53' E.  
P. 17

N. 89°53' E.  
P. 18

N. 89°53' E.  
P. 19

N. 89°53' E.  
P. 20

N. 89°53' E.  
P. 21

N. 89°53' E.  
P. 22

N. 89°53' E.  
P. 23

N. 89°53' E.  
P. 24

N. 89°53' E.  
P. 25

N. 89°53' E.  
P. 26

N. 89°53' E.  
P. 27

N. 89°53' E.  
P. 28

N. 89°53' E.  
P. 29

N. 89°53' E.  
P. 30

N. 89°53' E.  
P. 31

N. 89°53' E.  
P. 32-33

N. 89°53' E.  
P. 34

N. 89°53' E.  
P. 35

N. 89°53' E.  
P. 36

N. 89°53' E.  
P. 37

N. 89°53' E.  
P. 38

N. 89°53' E.  
P. 39

N. 89°53' E.  
P. 40

N. 89°53' E.  
P. 41

N. 89°53' E.  
P. 42

N. 89°53' E.  
P. 43

N. 89°53' E.  
P. 44

N. 89°53' E.  
P. 45

N. 89°53' E.  
P. 46

N. 89°53' E.  
P. 47

N. 89°53' E.  
P. 48

N. 89°53' E.  
P. 49

N. 89°53' E.  
P. 50

N. 89°53' E.  
P. 51

N. 89°53' E.  
P. 52

N. 89°53' E.  
P. 53

N. 89°53' E.  
P. 54

N. 89°53' E.  
P. 55

N. 89°53' E.  
P. 56

N. 89°53' E.  
P. 57

N. 89°53' E.  
P. 58