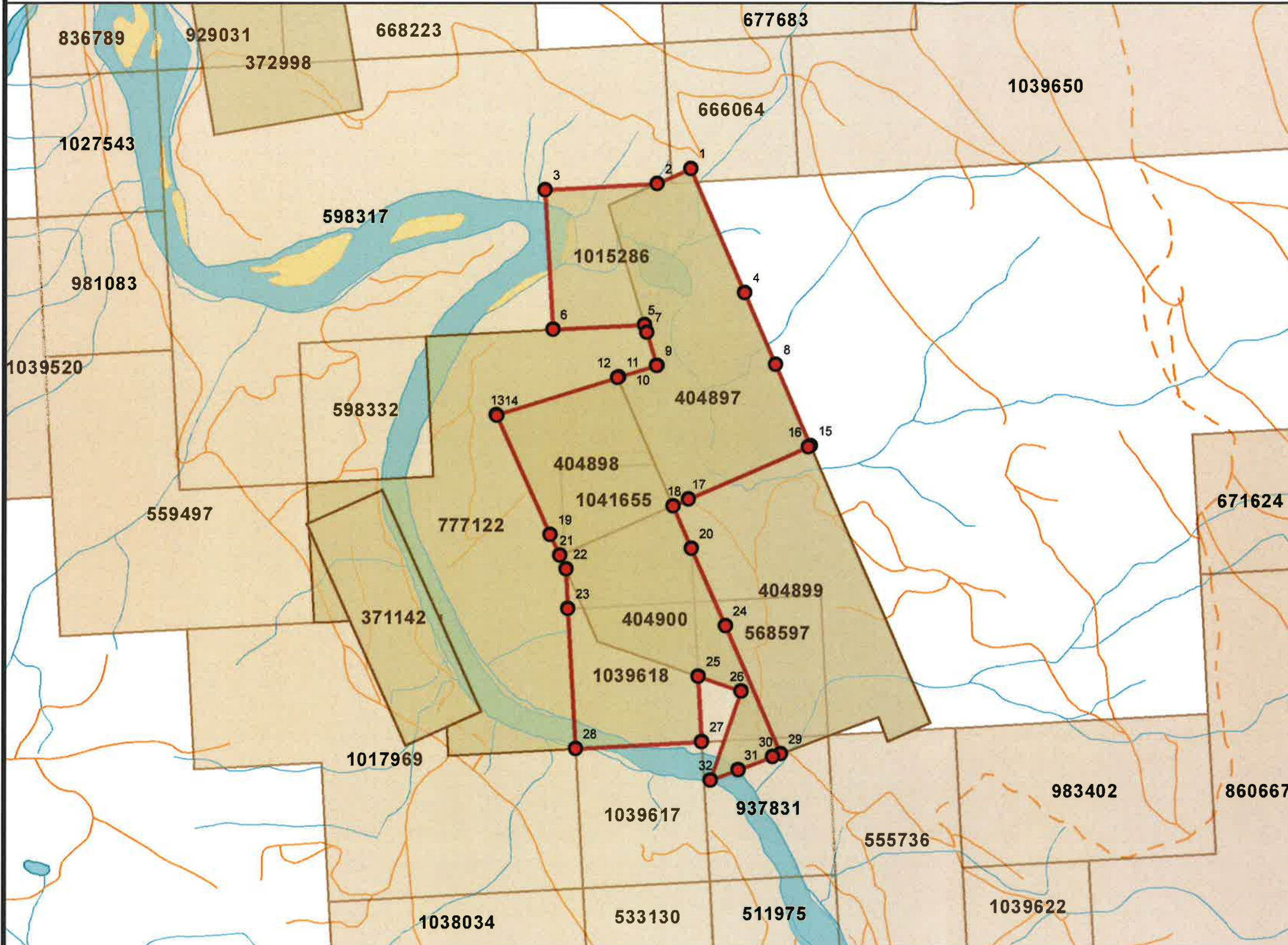




Placer Lease Application Technical Survey Plan

Application Event Number: 5601009

File Number: 13990-02-735



Area in Hectares: 110.89

Tenure Number(s)	Claim Name(s)
404897 404898 404900 1015286 1039618 1041655	PERSEVERANCE ONE PERSEVERANCE TWO PERSEVERANCE FOUR QUESNEL smokey 3 LEASE ADDITION

UTM Coordinates (meters)

Point	Easting	Northing	Point	Easting	Northing
1	559025.29	5845318.51	17	558971.21	5844226.06
2	558911.46	5845274.66	18	558918.14	5844205.62
3	558536.59	5845270.15	19	558505.05	5844128.32
4	559185.58	5844902.37	20	558973.21	5844062.66
5	558849.41	5844810.36	21	558533.27	5844057.38
6	558542.19	5844806.66	22	558551.83	5844010.76
7	558856.12	5844784.68	23	558553.42	5843879.68
8	559278.96	5844659.93	24	559074.12	5843800.67
9	558885.15	5844673.62	25	558978.39	5843637.73
10	558883.33	5844673.14	26	559117.62	5843582.56
11	558755.25	5844639.67	27	558981.03	5843421.26
12	558751.35	5844638.65	28	558559.03	5843416.18
13	558344.28	5844532.27	29	559240.07	5843369.83
14	558344.90	5844530.71	30	559212.12	5843360.75
15	559384.73	5844385.34	31	559096.90	5843323.30
16	559377.98	5844382.74	32	559002.79	5843292.72

All Points are within UTM Zone 10

I hereby agree with the boundary as identified in red and the coordinates provided

X

ALLGOLD BC LTD (282381)

Date:

July 7, 2016

Scale: 1:15,000

● Point with UTM Coordinates ■ Placer Claim ■ Parks & Protected Areas □ Mapsheet Grid □ MTO Cell Grid

