

SPAR - Seedling Requests by Planting Year and Species - Crown Land

Species	Planting Year		Seedlings in Millions								
	2006	2007	2008	2009	2010	2011	2012	2013	2014	2015	2016
Pli	124.5	133.4	118.1	99.7	89.7	98.4	121.0	115.6	111.0	108.7	105.4
Sx	72.9	84.2	81.4	62.8	51.7	61.2	66.6	74.7	82.1	94.5	95.3
Fdi	18.8	16.5	15.3	13.8	12.0	9.8	11.6	12.8	12.7	14.5	16.2
Fdc	9.4	8.4	6.8	5.2	4.0	5.1	8.3	9.7	8.4	8.3	7.9
Cw	13.2	10.0	10.7	9.7	5.9	7.5	9.5	9.4	9.7	10.0	9.4
Lw	7.3	6.6	6.7	5.2	5.0	4.4	5.7	5.3	5.6	7.0	8.6
Hw	2.8	2.2	2.0	1.3	1.0	1.5	2.0	1.8	1.3	1.9	1.7
Yc	1.3	1.4	1.0	0.8	0.7	1.2	1.0	0.9	0.8	1.0	1.0
Bl	1.4	1.7	1.5	1.6	0.8	0.7	1.6	0.9	0.9	1.9	1.4
Ss	0.9	1.0	0.8	0.8	0.5	0.5	1.0	1.1	0.7	1.2	1.1
Ba	1.5	1.1	0.9	0.6	0.5	0.9	1.1	1.2	0.8	1.1	1.1
Py	1.5	1.3	0.9	0.9	1.4	0.5	0.5	0.3	0.5	0.5	1.0
Pw	1.1	1.0	0.8	0.6	0.3	0.4	0.7	1.1	1.2	1.3	1.5
Dr	0.4	0.4	0.4	0.2	0.0	0.1	0.4	0.3	0.5	0.4	0.4
Other	0.3	0.3	0.3	0.3	0.2	0.2	0.3	0.4	0.4	0.5	0.3
Totals	257.2	269.8	247.7	203.5	173.8	192.4	231.2	235.5	236.6	252.6	252.1

Figure 1 - Seedling Requests by Species from Planting Year 2006 to 2016

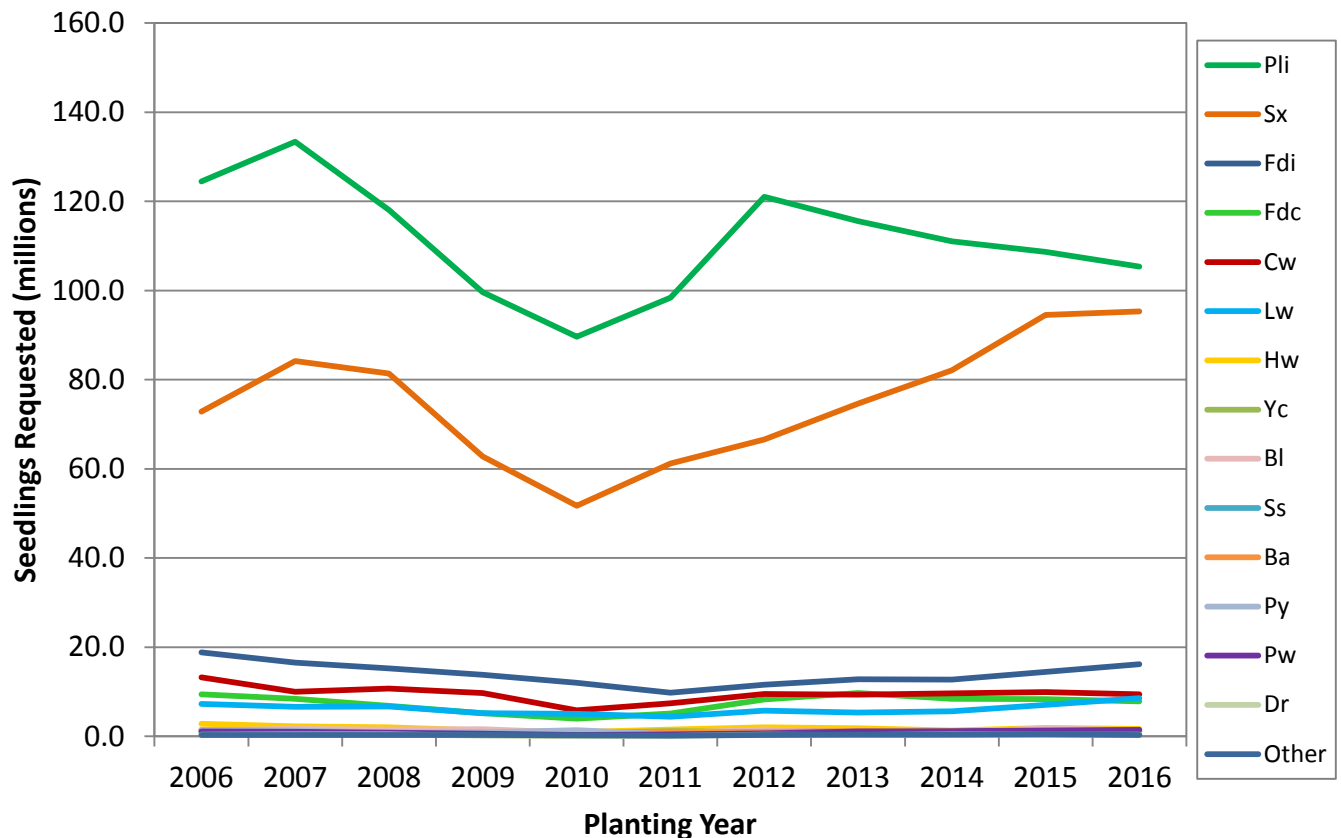
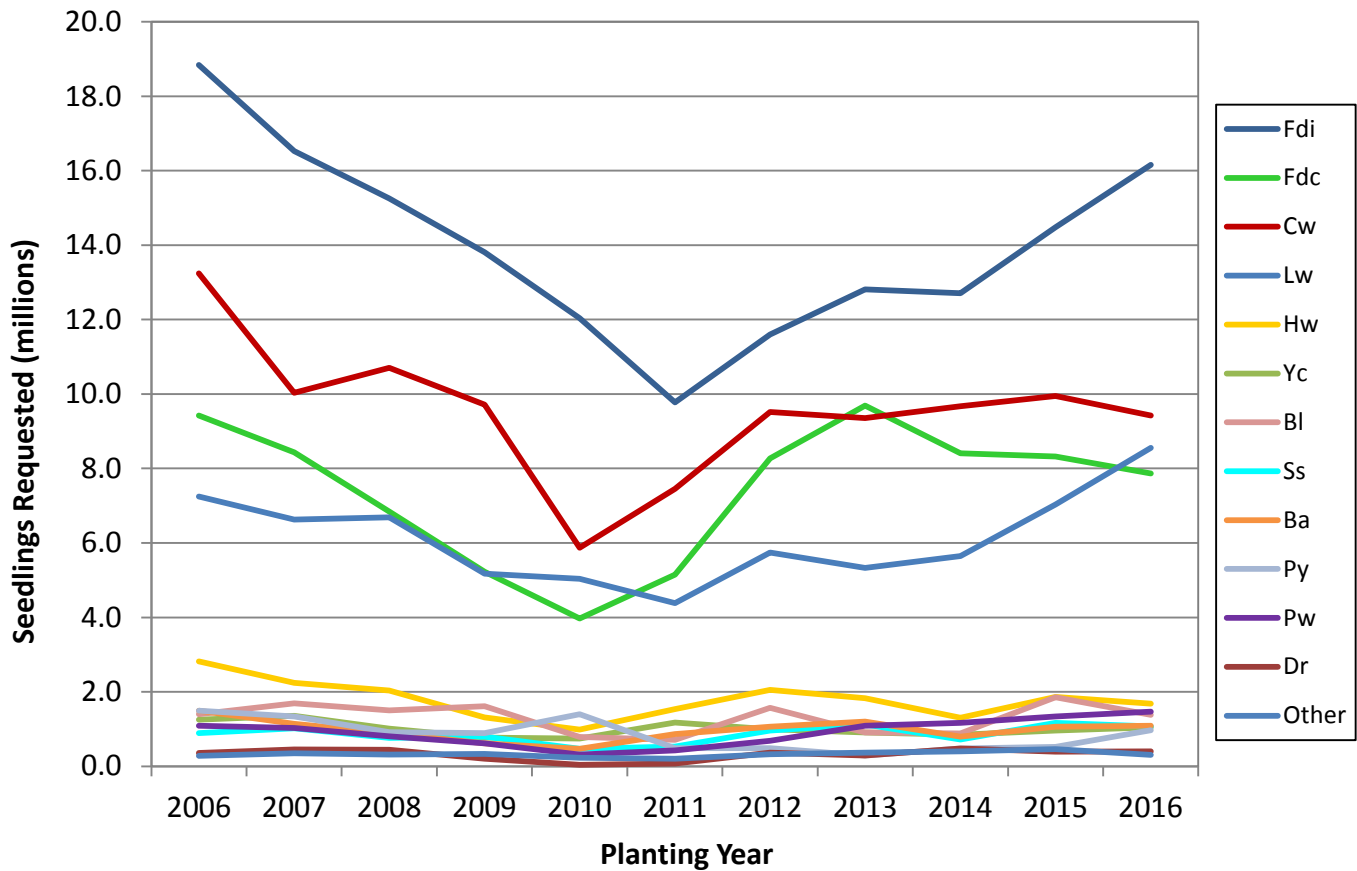


Figure 2 -Seedling Requests by Species (Pli and Sx removed) from Planting Year 2006 to 2016



- Pli** Lodgepole Pine (Interior)
- Sx** Spruce hybrids
- Fdi** Douglas Fir (Interior)
- Fdc** Douglas Fir (Coastal)
- Cw** Western Red Cedar
- Lw** Western Larch
- Hw** Western Hemlock
- Yc** Yellow Cypress
- Bl** Abies Lasiocarpa
- Ss** Sitka Spruce
- Ba** Abies Amabilis
- Py** Ponderosa Pine
- Pw** Western White Pine
- Dr** Red Alder
- Other** includes Poplar, Grand Fir, Noble Fir, Black Spruce, Mountain Hemlock and Shore Pine

Note: Data is from the Seed Planning and Registry system (SPAR), RESULTS data may indicate different amounts actually planted.