



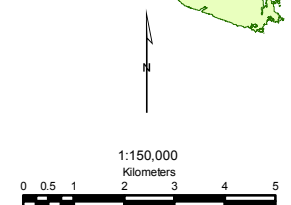
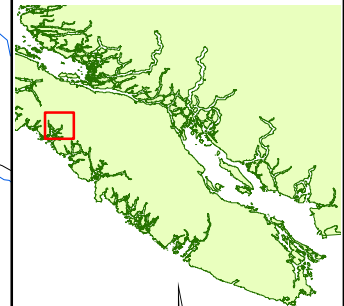
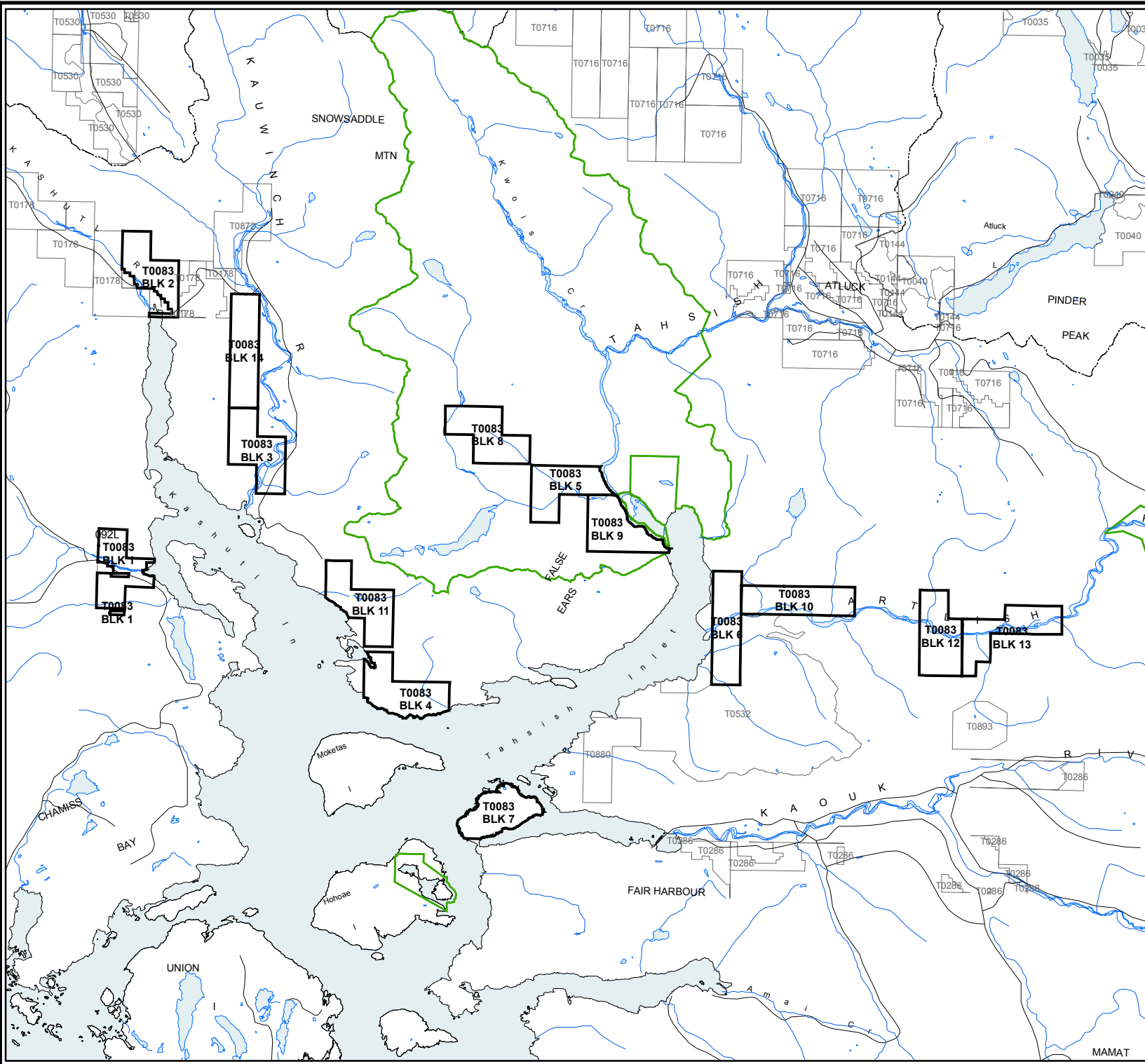
Schedule 2
[ORDER 3(1) 23 - 1]

Deletion from T0083
Area: 1583 Hectares ±

FOREST REGION: **Coast**
DISTRICT: **Campbell River**
LAND DISTRICT: **Rupert**
SHOWN AS A: **BOLD SOLID LINE**
PROJECTION: **ALBERS**
UNITS: **METERS**
DATUM: **NAD 83**
SPHEROID: **GRS1980**

DRAWN BY: **NATHAN ENGE**
REVISED BY: **NATHAN ENGE**

 Area Deleted from T0083



Map Produced By:
 **Coastal Resource Mapping Ltd.**
Environmental Mapping and GIS Consulting

Schedule 3
[ORDER 3(1) 23 - 1]

Deletion from T0532
Area: 1753 Hectares ±

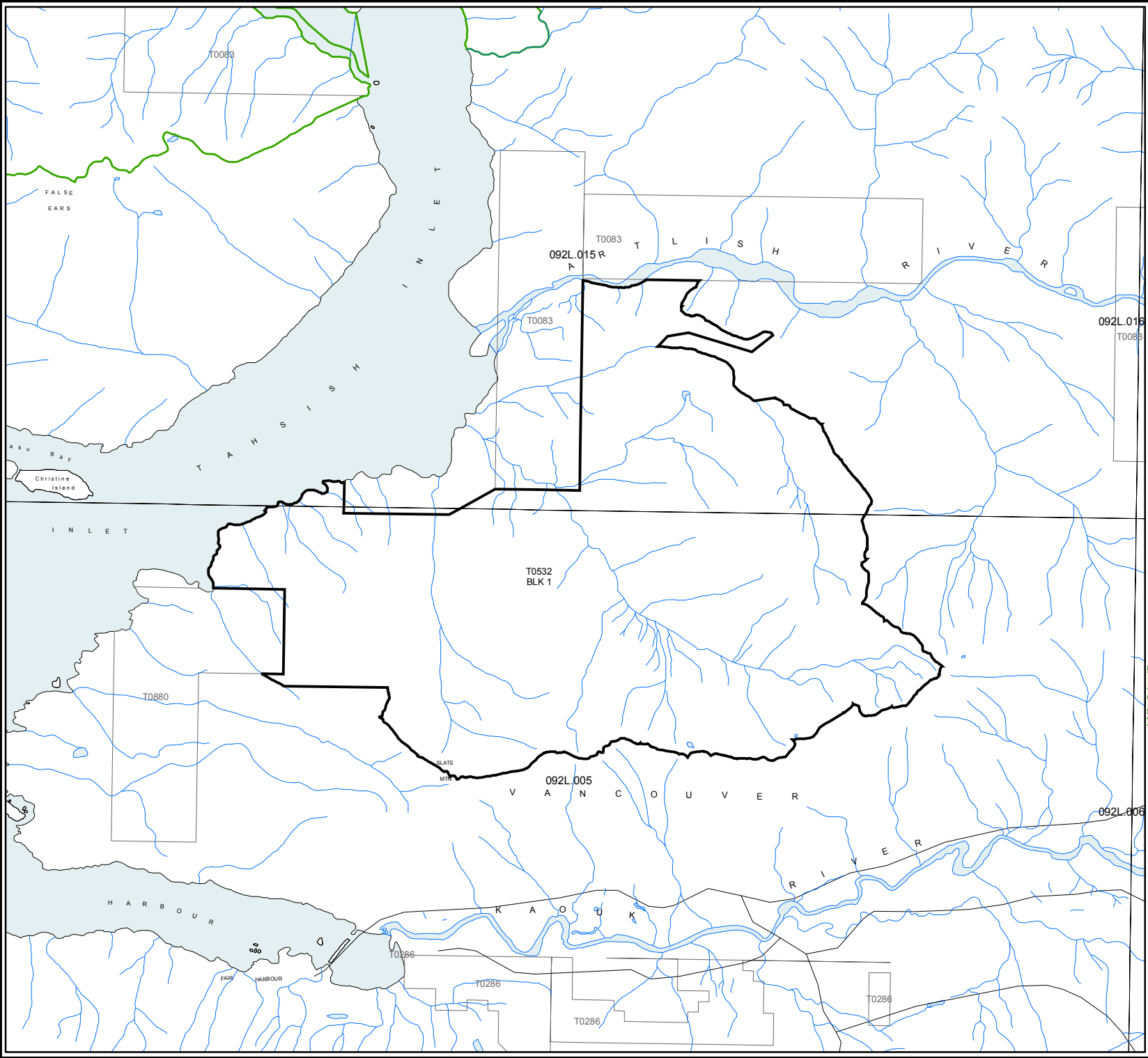
FOREST REGION: **Coast**
DISTRICT: **Campbell River**
LAND DISTRICT: **Rupert**
SHOWN AS A: **BOLD SOLID LINE**
PROJECTION: **ALBERS**
UNITS: **METERS**
DATUM: **NAD 83**
SPHEROID: **GRS1980**

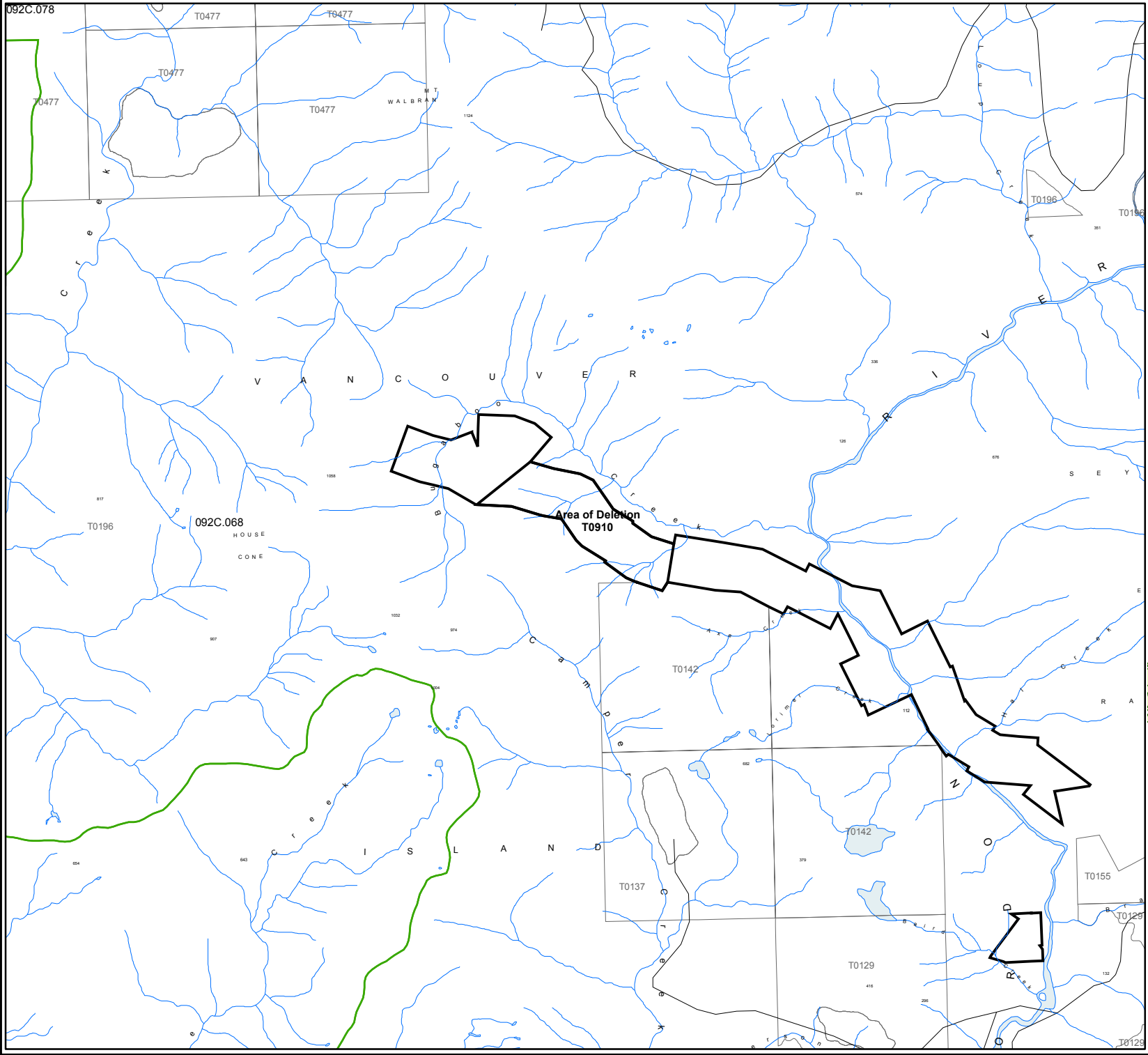
DRAWN BY: **NATHAN ENGE**
REVISED BY: **NATHAN ENGE**

Area Deleted from T0532



Map Produced By:
 Coastal Resource Mapping Ltd.
Environmental Mapping and GIS Consulting





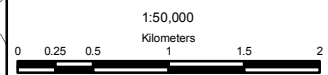
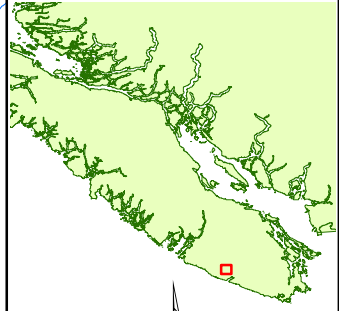
Schedule 2
[ORDER 3(1) 21 - 1]

Deletion from T0910
Area: 54 Hectares±

FOREST REGION: **Coast**
 DISTRICT: **South Island**
 LAND DISTRICT: **Cowichan Lake**
 SHOWN AS A: **BOLD SOLID LINE**
 PROJECTION: **ALBERS**
 UNITS: **METERS**
 DATUM: **NAD 83**
 SPHEROID: **GRS1980**

DRAWN BY: **NATHAN ENGE**
 REVISED BY: **NATHAN ENGE**

 **Area Deleted from T0910**



Map Produced By:
 **Coastal Resource Mapping Ltd.**
 Environmental Mapping and GIS Consulting