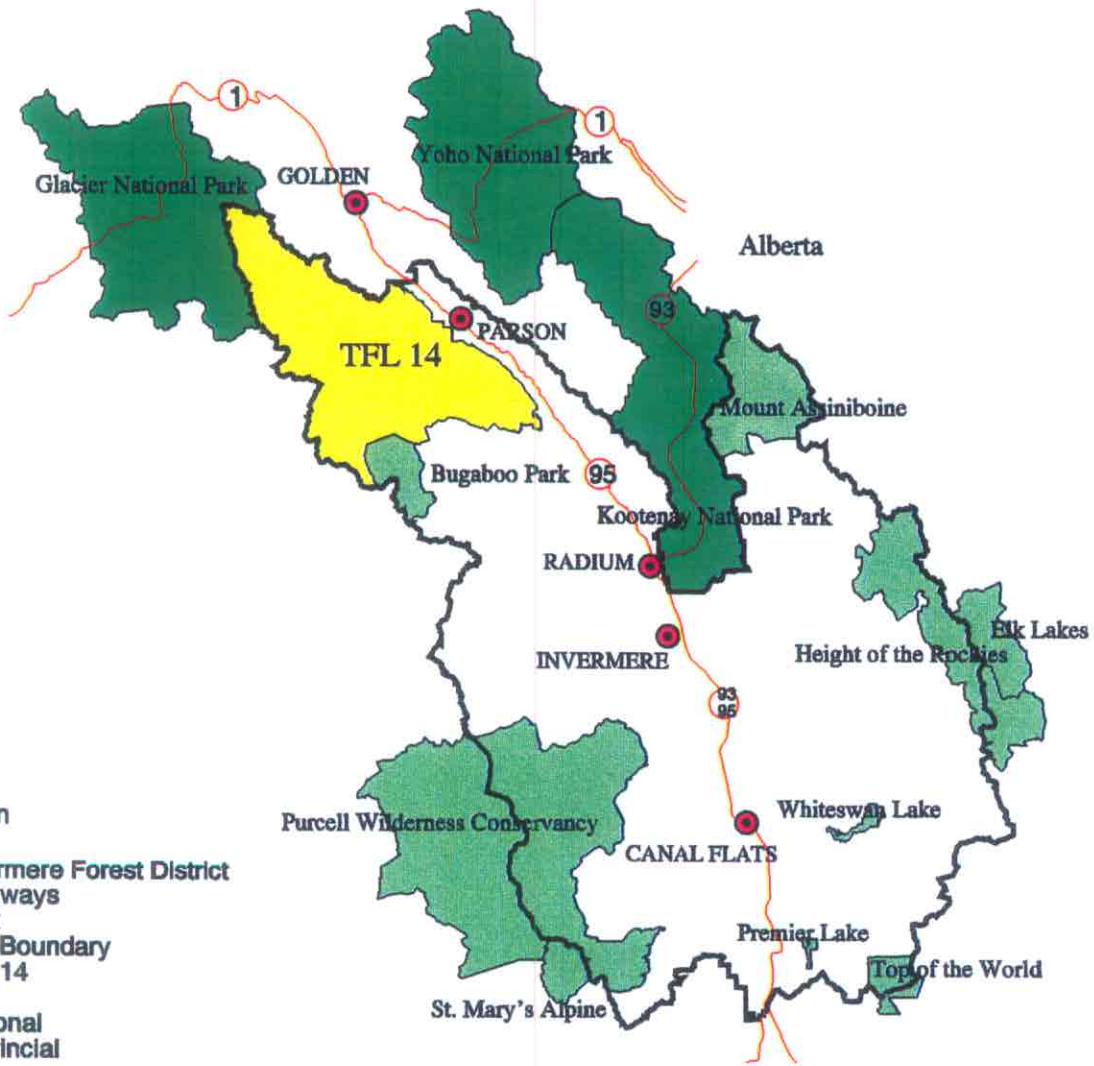


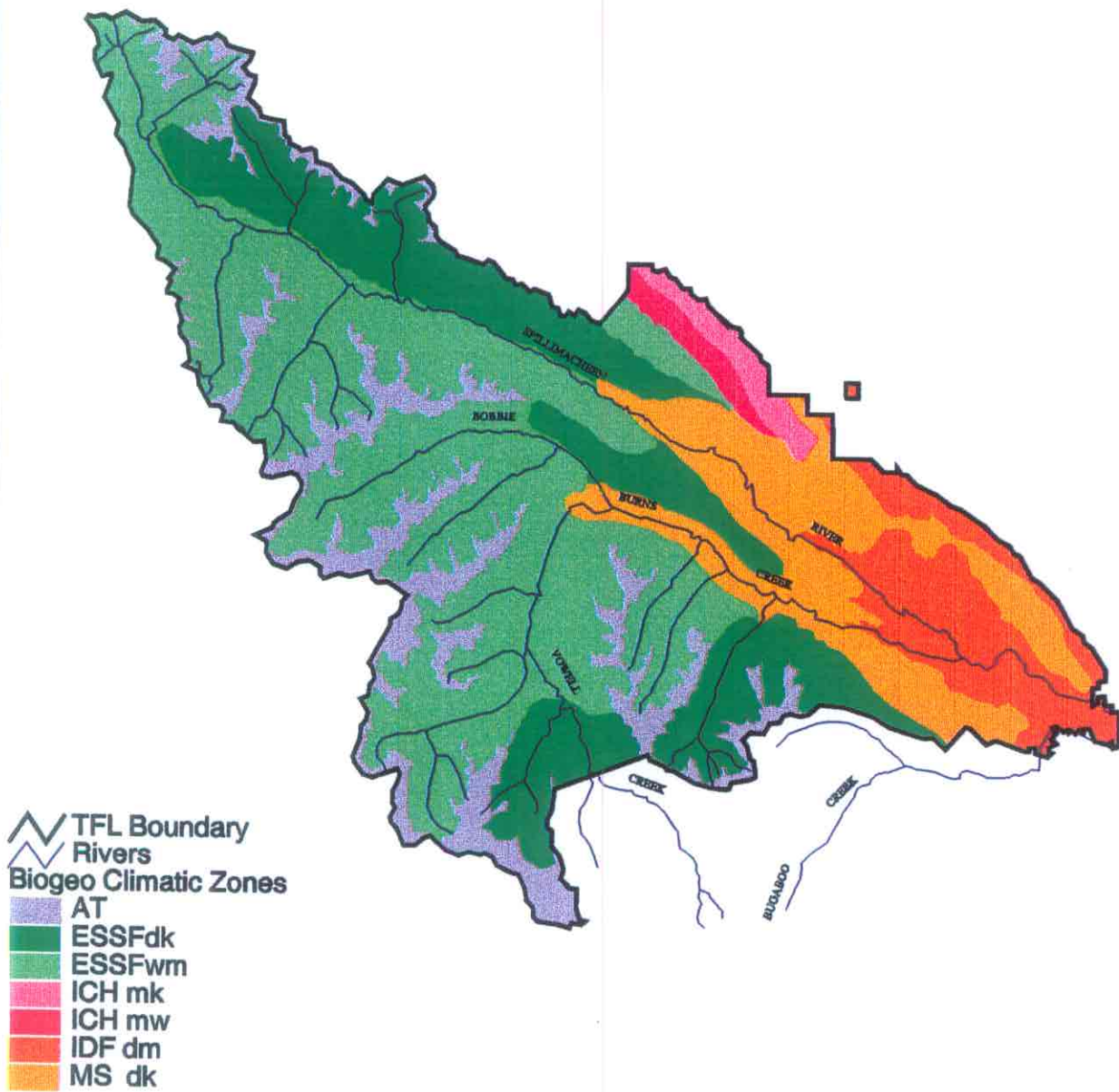
Crestbrook Forest Industries Ltd.
TFL14
Physical and Administrative Features



For more detail and accuracy, refer to the 1:20000 inventory maps.

Scale: 1:1,400,000
 8-May-2000

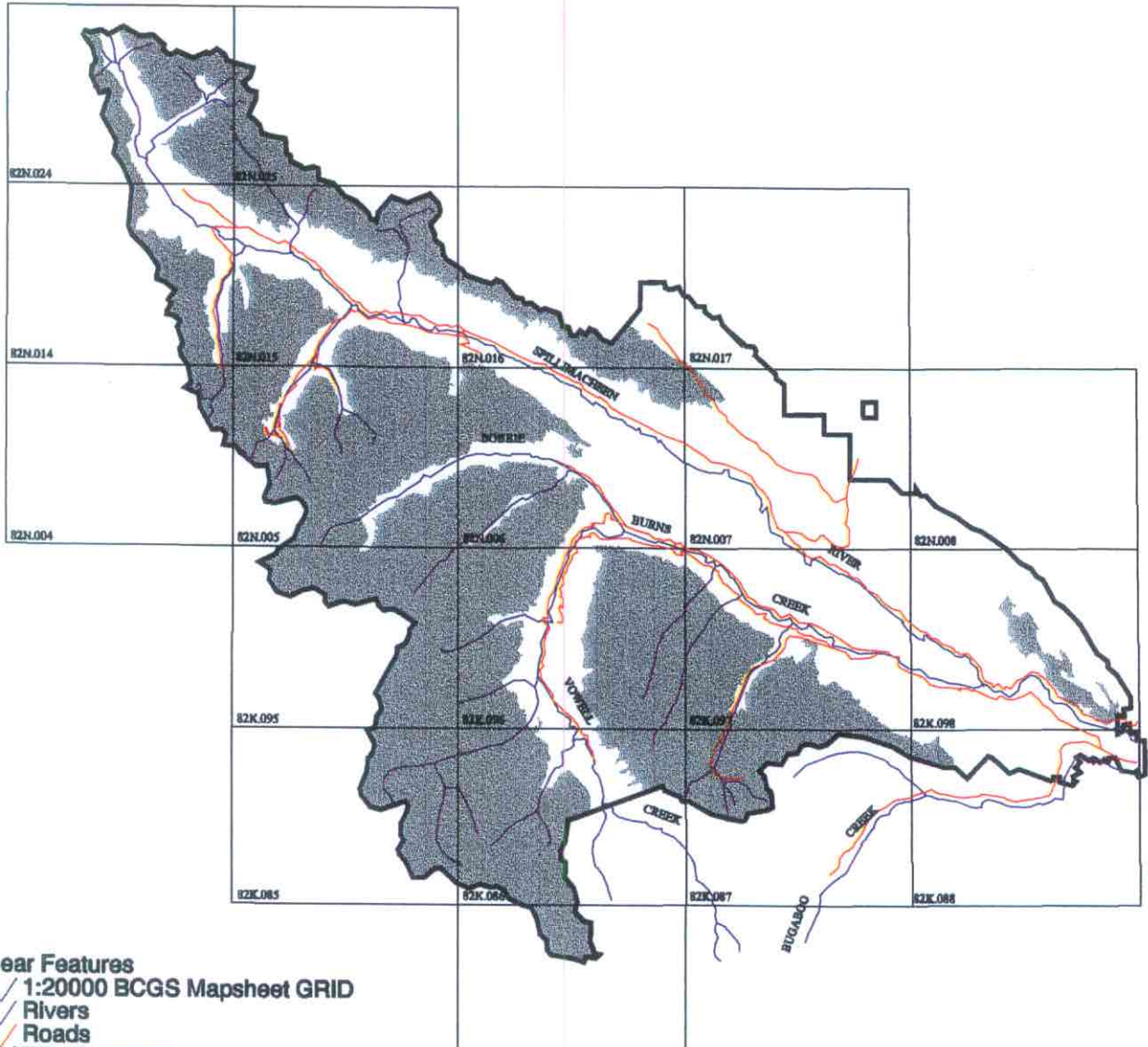
Crestbrook Forest Industries Ltd.
TFL14
Biogeoclimatic Zones and Subzones



For more detail and accuracy, refer to the 1:20000 inventory maps.

Scale: 1:400000
8-May-2000

Crestbrook Forest Industries Ltd. TFL14 Operability



- Linear Features
- 1:20000 BCGS Mapsheet GRID
 - Rivers
 - Roads
 - TFL Boundary
- Operability
- Operable
 - Inoperable

For more detail and accuracy, refer to the 1:20000 inventory maps.

Scale: 1:400000
8-May-2000