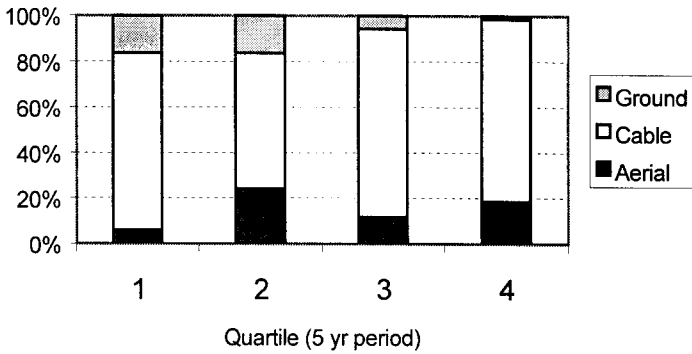


# APPENDIX A

## 20 Year Plan

## TFL 56 MP#3: 20 Year Plan Summary Statistics

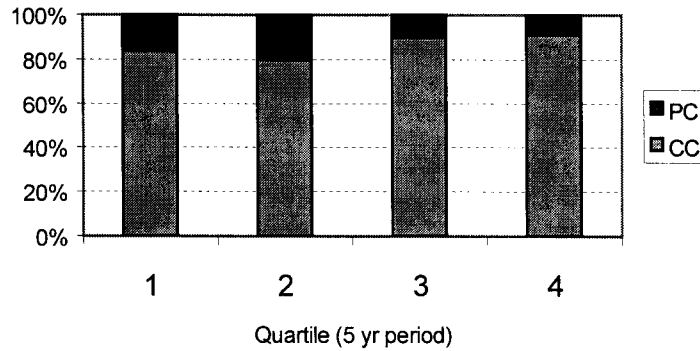
### Quartile Volume by Logging System



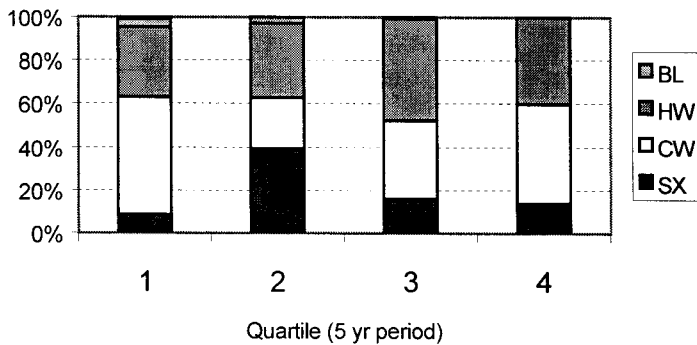
RCFC MP#3 20 Year Plan: Volume logged by harvest system for each quartile.

RCFC MP#3 20 Year Plan: Volume logged by silviculture system for each quartile.

### Quartile Volume by Silviculture System



### Quartile Volume by Leading Species



RCFC MP#3 20 Year Plan: Volume logged by leading species for each quartile.

RCFC TFL 56: MP3# 20 Year Plan Block Data

Quartile	Block ID	Area (ha)	Net m3	Net m3/ha	Harvest Method	Silviculture System	Biodiversity Emphasis	Caribou Zone	Ungulate Zone
1	100-CC	3.7	1755	477	A	PC	Intermediate	Inter Caribou	Moose
1	100-E	13.1	6650	506	C	CC	Intermediate	Inter Caribou	Moose
1	100-F	7.2	3783	524	C	PC	Intermediate	Inter Caribou	Moose
1	100-J	24.0	11310	470	C	CC	Intermediate		Moose
1	100-M	16.5	7902	480	A	CC	Intermediate	Inter Caribou	Moose
1	100-N	12.1	6329	524	C	PC	Intermediate	Inter Caribou	Moose
1	100-Q	1.6	665	403	A	CC	Low		
1	131-2	22.4	10347	463	C	CC	Low		
1	133-2	18.1	8155	451	C	CC	Low	Inter Caribou	
1	140-A	6.0	2458	407	A	CC	Intermediate		Moose
1	140-B	1.3	259	192	A	CC	Intermediate		Moose
1	141-2	17.0	8678	511	C	CC	Low		
1	141-5A	4.7	2408	514	C	CC	Low	Inter Caribou	
1	142-1	20.3	7893	388	C	CC	Intermediate		Moose
1	142-2	4.2	2036	489	C	CC	Low		
1	170-B	8.3	3348	406	A	PC	Intermediate	Inter Caribou	Moose
1	170-C	2.0	831	406	C	CC	Intermediate	Inter Caribou	Moose
1	170-H	27.4	10170	371	A	CC	Intermediate		
1	190-C	13.5	6468	480	C	CC	Intermediate		Moose
1	190-D	28.6	14116	494	C	CC	Intermediate		Moose
1	200-W	0.4	180	470	C	PC	Low	Primary Caribou	
1	222-1	124.5	14878	119	GB	PC	Low	Primary Caribou	
1	270-A	11.1	5865	530	C	CC	Low	Primary Caribou	Moose
1	270-B	12.4	7300	588	GB	CC	Low	Recruitment Caribou	Moose
1	270-E	32.0	16825	525	GB	PC	Low	Primary Caribou	
1	270-G	10.1	5378	534	C	CC	Low	Primary Caribou	
1	270-I	9.5	4390	462	GB	PC	Low	Primary Caribou	
1	270-J	8.7	2928	338	GB	PC	Low	Primary Caribou	
1	275-1	10.6	6830	644	C	CC	Low	Recruitment Caribou	
1	275-2	19.7	12682	644	C	CC	Low	Recruitment Caribou	Moose
1	282-1	17.0	10314	606	GB	PC	Low	Recruitment Caribou	Moose
1	282-2	2.1	1273	614	GB	PC	Low	Recruitment Caribou	Moose
1	282-3	2.7	1664	610	GB	PC	Intermediate	Recruitment Caribou	Moose
1	282-4	8.8	4020	458	GB	PC	Low	Recruitment Caribou	
1	282-6	18.5	8939	482	GB	PC	Low	Recruitment Caribou	Moose
1	290-A	3.8	1706	450	C	CC	Low		
1	290-AA	27.5	12788	466	C	CC	Low		
1	290-B	5.3	2294	430	C	CC	Low		
1	290-C	14.1	8741	620	C	CC	Low		
1	290-D	10.1	6533	645	C	CC	Low		
1	290-E	9.7	6105	630	C	CC	Low		
1	290-F	8.9	5447	612	C	CC	Low		
1	290-H	9.2	4691	511	C	CC	Low		
1	300-A	11.8	5521	468	C	CC	Low		
1	300-B	26.2	12262	468	C	CC	Low		
1	300-C	8.5	3996	468	C	CC	Low		

Quartile	Block ID	Area (ha)	Net m3	Net m3/ha	Harvest Method	Silviculture System	Biodiversity Emphasis	Caribou Zone	Ungulate Zone
1	300-D	13.7	7161	523	C	CC	Low		
1	300-E	27.4	13576	496	C	CC	Low		
1	300-F	23.6	11176	473	C	CC	Low		
1	300-G	21.1	10469	496	C	CC	Low		
1	300-H	16.9	7633	451	C	CC	Low		
1	303-3	19.2	12946	676	C	CC	Intermediate		Moose
1	303-4	9.3	4347	468	C	CC	Low		
1	303-5	12.4	4129	333	GB	CC	Low		
1	303-7	13.3	4461	337	A	CC	Low		
1	320-1	39.5	22936	581	C	CC	Low / Inter		
1	320-C	21.8	13370	613	C	CC	Low		
1	350-2	26.4	12374	468	C	CC	Intermediate		
1	350-3	28.1	19126	680	C	CC	Intermediate		
1	350-4	10.2	5419	533	GB	CC	Intermediate		
1	MP3-1	13.2	5534	420	C	CC	Low		Moose
1	MP3-100	6.3	2925	468	C	CC	Low		
1	MP3-12	16.5	7588	460	C	CC	Intermediate	Primary Caribou	Deer
1	MP3-126	28.5	15200	534	C	CC	Low		
1	MP3-31	63.0	22137	351	C	CC	Low	Primary Caribou	
1	MP3-50	8.9	4554	512	C	CC	Low		
1	MP3-89	8.5	4431	524	C	CC	Low		
Quartile 1 Totals		1102.9	500603	454					
2	100-AA	6.9	769	111	C	PC	Low		
2	100-BB	16.8	1895	113	C	PC	Low	Inter Caribou	
2	100-I	4.5	1660	369	A	CC	Low		
2	100-K	13.3	5834	440	A	PC	Low / Inter	Inter Caribou	Moose
2	100-L	4.7	2452	524	C	PC	Intermediate	Inter Caribou	Moose
2	100-Q	5.8	3033	524	A	CC	Low		
2	100-S	15.2	6503	429	C	CC	Low		
2	100-W	23.3	8881	381	GB	CC	Low		
2	100-Z	154.3	17123	111	GB	PC	Low	Inter Caribou	
2	120-B	12.2	6396	524	C	CC	Intermediate	Inter Caribou	Moose
2	120-C	14.9	5350	360	A	PC	Low	Inter Caribou	
2	120-D	9.3	3080	333	GB	CC	Low	Inter Caribou	
2	120-E	0.8	252	334	GB	CC	Low	Inter Caribou	
2	120-F	4.9	1631	333	C	CC	Low	Inter Caribou	
2	120-G	5.5	1838	333	C	CC	Low	Inter Caribou	
2	120-H	3.2	1055	330	GB	CC	Low	Inter Caribou	
2	120-I	5.5	1817	333	C	CC	Low	Inter Caribou	
2	120-M	1.5	428	278	C	CC	Low	Inter Caribou	
2	120-U	0.3	121	466	C	PC	Low	Inter Caribou	
2	120-X	9.8	5156	524	A	CC	Low	Inter Caribou	
2	130-A	5.7	2189	387	A	CC	Low		
2	130-B	2.5	1198	480	A	CC	Low		
2	140-H	5.9	2601	442	C	CC	Low		
2	140-I	6.2	3160	512	C	CC	Low / Inter		Moc

Quartile	Block ID	Area (ha)	Net m3	Net m3/ha	Harvest Method	Silviculture System	Biodiversity Emphasis	Caribou Zone	Ungulate Zone
2	140-M	6.1	2830	462	C	CC	Low		
2	141-3	3.9	2067	525	A	CC	Low		
2	141-4	2.9	1156	395	A	CC	Low		
2	141-5B	0.8	289	375	C	CC	Low	Inter Caribou	
2	150-A	5.3	2051	384	C	CC	Intermediate		
2	150-B	2.4	909	385	A	PC	Low		
2	150-C	5.2	2867	552	A	CC	Low		
2	150-D	1.3	790	611	A	CC	Low		
2	150-E	0.7	432	640	A	CC	Low		
2	150-F	5.7	3510	618	A	CC	Low		
2	150-I	3.8	2379	621	A	CC	Low		
2	160-A	0.7	312	478	GB	PC	Intermediate	Inter Caribou	Moose
2	170-A	14.8	6309	427	A	CC	Intermediate	Inter Caribou	Moose
2	170-D	6.6	2998	452	A	CC	Low		
2	170-E	4.6	1967	430	C	CC	Intermediate		
2	170-F	3.6	1675	468	GB	CC	Intermediate		
2	170-G	15.8	7084	447	C	CC	Intermediate	Inter Caribou	
2	170-J	4.0	1542	383	A	CC	Intermediate	Inter Caribou	
2	170-K	1.1	417	383	A	CC	Intermediate	Inter Caribou	
2	170-L	8.5	3665	429	C	CC	Intermediate	Inter Caribou	
2	170-M	8.9	3613	406	C	CC	Intermediate	Inter Caribou	
2	170-N	8.2	3433	420	C	CC	Intermediate		
2	170-O	17.0	5674	334	A	PC	Low		
2	170-P	4.8	2244	468	C	CC	Intermediate		
2	170-Q	2.0	847	429	GB	CC	Intermediate		
2	170-R	8.1	3903	480	C	CC	Intermediate		
2	170-S	12.0	5792	482	C	CC	Low / Inter		
2	170-T	10.1	4369	432	C	CC	Intermediate		
2	180-A	8.1	3698	456	C	CC	Intermediate		
2	180-C	1.9	739	380	A	CC	Intermediate		
2	180-D	4.0	1875	467	C	CC	Low / Inter		
2	180-E	9.5	4450	468	C	CC	Low / Inter		
2	180-F	15.6	5925	381	A	CC	Low / Inter		
2	180-H	4.3	1909	440	A	CC	Low		
2	180-I	4.0	1259	314	A	PC	Low		
2	180-J	8.7	4406	506	C	CC	Low / Inter		
2	180-K	14.4	5823	405	A	PC	Low		
2	180-L	17.5	7196	411	A	PC	Low		
2	180-M	8.7	4561	522	C	PC	Intermediate		
2	180-N	6.9	3510	506	C	PC	Low		
2	180-O	11.0	5720	522	C	PC	Intermediate		
2	180-P	7.6	2948	387	C	PC	Intermediate		
2	190-A	19.3	10310	534	C	CC	Low / Inter		Moose
2	190-B	10.8	5640	523	C	CC	Intermediate		Moose
2	190-C	0.2	63	329	C	CC	Intermediate		Moose
2	190-E	11.9	5863	494	C	CC	Low		
2	200-G	0.2	71	360	A	PC	Low	Inter Caribou	

Quartile	Block ID	Area (ha)	Net m3	Net m3/ha	Harvest Method	Silviculture System	Biodiversity Emphasis	Caribou Zone	Ungulate Zone
2	200-T	5.2	1597	309	GB	PC	Low	Primary Caribou	
2	200-U	7.6	2168	285	C	CC	Intermediate	Primary Caribou	Deer
2	200-V	37.0	16079	435	GB	CC	Low	Primary Caribou	
2	210-A	33.7	12949	384	C	PC	Low	Primary Caribou	
2	210-B	32.7	14447	442	GB	PC	Low	Primary Caribou	
2	220-A	25.9	8584	332	A	CC	Low		
2	220-B	10.9	6999	642	A	CC	Low		
2	220-D	4.7	2074	439	A	CC	Low		
2	220-E	2.9	1275	439	A	CC	Low		
2	220-H	8.0	3724	468	C	CC	Low		
2	270-E	0.1	67	598	GB	PC	Low	Primary Caribou	
2	270-H	2.3	667	292	A	PC	Low	Primary Caribou	
2	290-CC	10.3	4491	436	C	CC	Low		
2	290-DD	13.3	4400	330	GB	CC	Low		
2	290-G	12.4	7168	578	C	CC	Low		
2	290-GG	3.5	1168	333	GB	CC	Low		
2	290-HH	29.6	9412	318	GB	CC	Low		
2	290-JJ	21.0	7675	366	C	CC	Low		
2	290-K	4.3	1292	301	C	CC	Low		
2	290-KK	27.5	11592	422	C	CC	Low		
2	290-M	5.3	1681	318	C	CC	Low		
2	290-O	4.4	1389	318	A	CC	Low		
2	290-Q	7.0	2834	403	C	CC	Low		
2	290-R	2.8	1091	387	C	CC	Low		
2	290-S	2.3	815	359	C	CC	Low		
2	290-U	9.6	3526	367	C	CC	Low		
2	290-V	19.5	8513	437	C	CC	Low		
2	290-W	7.9	2640	333	C	CC	Low		
2	290-X	7.9	2501	318	GB	CC	Low		
2	300-C	2.6	1193	468	C	CC	Low		
2	300-J	26.0	10500	404	C	CC	Low		
2	303-6	4.5	1756	387	A	CC	Low		
2	320-1	2.3	1477	645	C	CC	Intermediate		Moose
2	320-A	9.6	4510	467	C	CC	Intermediate		Moose
2	320-B	16.2	7562	468	C	CC	Intermediate		Moose
2	350-1	5.6	2978	534	C	CC	Intermediate		
2	350-5	20.8	9043	434	C	CC	Intermediate		
2	350-C	3.4	2273	672	A	CC	Low		
2	350-D	12.8	6821	533	C	CC	Intermediate		
2	350-E	29.0	13774	475	C	CC	Intermediate		
2	350-F	15.4	8874	577	C	CC	Low		
2	350-G	4.9	1906	385	A	CC	Low / Inter		
2	360-A	12.1	6329	525	C	CC	Low / Inter		
2	360-B	3.2	1586	502	A	CC	Low		
2	360-C	14.5	7472	514	C	CC	Low / Inter		
2	360-D	4.3	2149	504	A	CC	Low / Inter		
2	360-E	3.5	1733	492	A	CC	Low / Inter		

Quartile	Block ID	Area (ha)	Net m3	Net m3/ha	Harvest Method	Silviculture System	Biodiversity Emphasis	Caribou Zone	Ungulate Zone
2	360-F	15.4	7219	470	C	CC	Low / Inter		
2	360-G	10.2	4831	474	A	CC	Intermediate		
2	360-H	12.2	5611	459	A	CC	Intermediate		
2	MP3-101	8.0	3751	468	C	CC	Low		
2	MP3-30	1.7	530	308	C	CC	Low	Primary Caribou	
2	MP3-55	4.0	1780	445	C	CC	Low		
2	MP3-58	0.1	49	476	C	CC	Low		
2	MP3-68	8.0	3645	458	C	CC	Low		
2	MP3-86	3.7	1629	442	C	CC	Low		
2	MP3-9	8.7	4571	523	C	CC	Low		
Quartile 2 Totals		1288.5	503882	391					
3	100-O	3.2	1519	474	A	CC	Low		
3	100-P	2.2	1085	499	A	CC	Low		
3	100-Q	2.3	1024	452	A	CC	Low		
3	100-S	53.4	23599	442	C	CC	Low		
3	120-Q	27.3	18005	660	C	CC	Intermediate	Inter Caribou	Moose
3	120-R	0.1	73	507	C	CC	Low	Inter Caribou	
3	120-S	7.6	3422	451	C	CC	Low / Inter	Inter Caribou	Moose
3	120-T	4.6	2184	477	C	CC	Low	Inter Caribou	
3	120-U	24.6	10803	440	C	PC	Low	Inter Caribou	
3	121-1B	38.2	18835	494	C	CC	Low	Inter Caribou	
3	121-2	30.3	14471	477	C	CC	Low	Inter Caribou	
3	150-F	0.6	385	629	A	CC	Low		
3	150-I	2.7	1774	664	A	CC	Low		
3	180-C	0.2	80	323	A	CC	Intermediate		
3	180-E	0.5	180	338	C	CC	Intermediate		
3	180-I	1.2	398	344	A	PC	Low		
3	200-A	3.0	1009	341	A	PC	Intermediate		
3	200-B	8.6	2936	341	A	PC	Low	Inter Caribou	
3	200-C	7.3	3353	462	C	CC	Low	Inter Caribou	
3	200-G	5.5	1909	345	A	PC	Low	Inter Caribou	
3	200-H	13.5	4629	342	GB	PC	Low	Inter Caribou	
3	200-I	2.2	795	368	A	PC	Low	Inter Caribou	
3	200-J	7.5	2571	341	C	CC	Low	Inter Caribou	
3	200-L	10.5	3652	348	GB	PC	Low	Inter Caribou	
3	220-A	11.2	7411	661	A	CC	Low	Recruitment Caribou	
3	220-B	8.7	5590	646	A	CC	Low		
3	272-3CB	3.7	1796	489	A	PC	Low		
3	272-4	0.4	163	459	GB	PC	Low		
3	272-4CB	0.4	227	632	C	PC	Low		
3	290-BB	5.3	2308	437	C	CC	Low		
3	290-F	2.6	1654	631	C	CC	Low		
3	320-E	41.3	19990	485	GB	PC	Low		
3	320-H	29.2	17391	597	C	CC	Low		
3	350-A	25.0	10616	425	C	CC	Low		

Quartile	Block ID	Area (ha)	Net m3	Net m3/ha	Harvest Method	Silviculture System	Biodiversity Emphasis	Caribou Zone	Ungulate Zone
3	MP3-10	2.3	1113	485	C	CC	Low		
3	MP3-101	7.2	3431	477	C	CC	Low	Inter Caribou	
3	MP3-102	12.2	8019	657	C	CC	Low		
3	MP3-106	1.8	762	425	A	CC	Intermediate		Moose
3	MP3-107	1.8	588	325	A	CC	Low	Inter Caribou	
3	MP3-108	11.4	5119	450	A	CC	Low	Recruitment Caribou	
3	MP3-11	3.2	2159	674	C	CC	Low		
3	MP3-112	7.2	2465	341	A	CC	Low	Inter Caribou	
3	MP3-113	10.1	3922	386	A	CC	Low		
3	MP3-114	1.7	977	562	C	CC	Intermediate	Inter Caribou	Moose
3	MP3-116	0.4	135	340	A	CC	Low		
3	MP3-117	11.9	5317	448	A	CC	Low		
3	MP3-120	8.2	4275	524	C	CC	Low		
3	MP3-122	4.3	2040	474	C	CC	Intermediate	Inter Caribou	Moose
3	MP3-123	9.0	4269	477	C	CC	Intermediate		
3	MP3-127	3.9	1930	501	C	CC	Low		
3	MP3-128	11.5	6998	610	C	CC	Low		
3	MP3-130	22.0	7502	341	C	CC	Intermediate		
3	MP3-132	15.9	6779	426	C	CC	Low	Primary Caribou	
3	MP3-133	10.8	5012	465	C	CC	Low	Inter Caribou	
3	MP3-134	8.4	4183	500	C	CC	Intermediate	Inter Caribou	Moose
3	MP3-135	30.6	10433	341	C	CC	Intermediate		
3	MP3-14	4.6	1968	428	C	CC	Low	Primary Caribou	
3	MP3-17	7.7	3900	507	C	CC	Intermediate	Primary Caribou	
3	MP3-18	13.5	6228	461	C	CC	Low	Inter Caribou	
3	MP3-20	10.2	4120	403	A	CC	Low	Inter Caribou	
3	MP3-23	10.4	5142	492	C	CC	Low		
3	MP3-24	4.1	2122	524	C	CC	Intermediate		Moose
3	MP3-25	11.8	5048	429	C	CC	Intermediate		Moose
3	MP3-26	1.3	536	402	A	CC	Low		
3	MP3-27	0.4	195	543	C	CC	Low		
3	MP3-28	5.4	2583	477	C	CC	Low		
3	MP3-29	1.1	421	383	C	CC	Intermediate	Recruitment Caribou	Moose
3	MP3-35	2.6	1400	542	C	CC	Low	Inter Caribou	
3	MP3-36	2.4	927	390	C	CC	Low		
3	MP3-37	6.4	3439	538	C	CC	Low	Recruitment Caribou	
3	MP3-4	3.3	1230	368	A	CC	Low		
3	MP3-43	2.2	688	319	C	CC	Low	Inter Caribou	
3	MP3-45	8.5	5672	665	C	CC	Low		
3	MP3-46	6.9	3423	499	C	CC	Low		
3	MP3-47	27.2	14122	518	C	CC	Low		
3	MP3-48	2.5	1345	543	C	CC	Intermediate		
3	MP3-49	34.9	16630	477	C	CC	Intermediate		
3	MP3-5	0.8	518	652	C	CC	Low / Inter		Moose
3	MP3-51	0.7	466	627	C	CC	Intermediate	Inter Caribou	Moose
3	MP3-52	13.6	9285	682	C	CC	Low		
3	MP3-53	3.8	2092	553	C	CC	Low / Inter		



Quartile	Block ID	Area (ha)	Net m3	Net m3/ha	Harvest Method	Silviculture System	Biodiversity Emphasis	Caribou Zone	Ungulate Zone
3	MP3-54	2.5	1559	634	C	CC	Low		
3	MP3-55	30.1	14332	477	C	CC	Low		
3	MP3-56	12.5	6330	505	C	CC	Low / Inter		Moose
3	MP3-57	9.9	5083	513	C	CC	Intermediate		
3	MP3-58	40.9	20288	496	C	CC	Low		
3	MP3-6	7.3	2959	406	C	CC	Low		
3	MP3-62	4.6	2273	495	C	CC	Intermediate		
3	MP3-63	11.5	5497	479	C	CC	Low		
3	MP3-64	0.4	187	429	A	CC	Intermediate		
3	MP3-64	2.9	1307	458	C	CC	Low		
3	MP3-65	2.0	1020	498	C	CC	Low		
3	MP3-66	2.7	1256	460	A	CC	Low		
3	MP3-67	23.2	11188	483	C	CC	Low		
3	MP3-69	3.3	1701	511	A	CC	Low		
3	MP3-70	10.2	5027	495	C	CC	Intermediate		
3	MP3-73	15.9	7588	477	C	CC	Low	Recruitment Caribou	
3	MP3-74	9.8	913	381	C/A	CC	Low / Inter		Moose
3	MP3-78	8.3	3947	476	C	CC	Low / Inter		
3	MP3-79	5.5	2881	523	C	CC	Intermediate		Moose
3	MP3-8	2.7	1341	497	A	CC	Low		
3	MP3-81	2.8	1420	499	A	CC	Intermediate		Moose
3	MP3-85	2.5	1352	544	C	CC	Intermediate		Moose
3	MP3-88	12.4	7343	590	C	CC	Intermediate		Moose
3	MP3-92	5.9	2385	406	C	CC	Low		
3	MP3-93	10.6	5383	509	C	CC	Low		
3	MP3-96	6.8	3477	514	C	CC	Intermediate	Inter Caribou	Moose
3	MP3-97	0.2	67	437	A	CC	Intermediate	Inter Caribou	
Quartile 3 Totals		1023.0	492435	481					
4	120-P	46.0	1834	40	C	CC	Low	Inter Caribou	
4	120-R	38.4	21848	568	C	CC	Low	Inter Caribou	
4	120-S	21.6	10867	502	C	CC	Intermediate	Inter Caribou	Moose
4	120-U	3.3	1655	499	C	PC	Intermediate	Inter Caribou	Moose
4	120-V	43.1	18852	437	C	CC	Low	Inter Caribou	
4	140-C	8.6	5536	644	C	CC	Intermediate		Moose
4	140-D	23.6	11234	477	C	CC	Low		
4	140-E	6.5	3218	494	A	CC	Low		
4	140-F	6.0	3048	508	C	CC	Low		
4	140-G	7.8	3880	500	A	CC	Low		
4	140-J	12.0	7236	604	GB	CC	Intermediate		
4	140-K	5.0	3441	690	C	CC	Low / Inter		
4	140-L	2.2	1414	632	C	CC	Intermediate		
4	140-N	13.8	6064	438	C	CC	Low		
4	140-O	14.7	7345	498	C	CC	Low / Inter		
4	140-P	13.0	6784	524	C	PC	Low		
4	140-Q	10.0	4390	441	C	CC	Low / Inter		
4	140-R	5.1	2656	521	C	CC	Low		

Quartile	Block ID	Area (ha)	Net m3	Net m3/ha	Harvest Method	Silviculture System	Biodiversity Emphasis	Caribou Zone	Ungulate Zone
4	140-S	4.7	2226	471	C	CC	Low		
4	140-T	3.0	1634	543	C	CC	Low		
4	140-U	6.4	3281	509	C	CC	Intermediate		
4	200-K	32.6	11051	339	A	PC	Low	Inter Caribou	
4	200-R	21.7	7378	341	A	PC	Low	Recruitment Caribou	
4	260-B	20.9	7352	353	C	PC	Low	Recruitment Caribou	
4	260-C	29.1	10592	365	C	PC	Low	Recruitment Caribou	
4	MP3-103	2.9	1211	416	A	CC	Intermediate	Inter Caribou	
4	MP3-104	5.0	2480	495	C	CC	Low / Inter		
4	MP3-105	11.1	4713	424	A	CC	Low		
4	MP3-109	52.8	26216	497	C	CC	Low / Inter		Moose
4	MP3-11	10.6	5545	523	C	CC	Low	Inter Caribou	
4	MP3-110	12.8	5708	447	A	CC	Low / Inter		
4	MP3-111	7.1	3377	477	C	CC	Intermediate		
4	MP3-115	16.3	7290	449	A	CC	Low		
4	MP3-118	26.3	17357	659	C	CC	Intermediate		Moose
4	MP3-119	11.0	5778	524	C	CC	Intermediate	Inter Caribou	Moose
4	MP3-121	52.1	21033	404	C	CC	Low		
4	MP3-124	11.4	5993	524	C	CC	Intermediate	Inter Caribou	Moose
4	MP3-125	0.8	381	476	C	CC	Low		
4	MP3-129	4.4	2315	524	C	CC	Intermediate		Moose
4	MP3-13	35.1	18838	536	C	CC	Intermediate		
4	MP3-131	0.5	131	269	C	CC	Low	Primary Caribou	
4	MP3-16	6.4	3028	472	C	CC	Low		
4	MP3-19	1.5	507	339	C	CC	Low		
4	MP3-2	4.1	1941	477	C	CC	Low		
4	MP3-21	16.6	6722	406	C	CC	Low		
4	MP3-22	11.3	4742	419	A	CC	Low	Inter Caribou	
4	MP3-3	0.8	262	340	C	CC	Low	Primary Caribou	
4	MP3-32	1.2	462	393	C	CC	Low		
4	MP3-33	12.6	5685	452	C	CC	Low		
4	MP3-34	2.2	909	405	C	CC	Low		
4	MP3-38	6.7	3223	484	C	CC	Intermediate		Moose
4	MP3-39	0.4	285	674	C	CC	Low		
4	MP3-40	10.2	5333	524	C	CC	Intermediate		Moose
4	MP3-41	3.8	1554	406	C	CC	Low		
4	MP3-42	1.8	1193	656	C	CC	Intermediate		
4	MP3-44	4.5	1523	341	C	CC	Low		
4	MP3-47	36.4	19737	542	C	CC	Intermediate		
4	MP3-59	27.2	14789	543	C	CC	Intermediate		
4	MP3-60	28.8	15625	543	C	CC	Intermediate		
4	MP3-61	38.3	18440	482	C	CC	Low		
4	MP3-7	20.7	10849	524	C	CC	Low / Inter		Moose
4	MP3-71	18.5	6325	341	A	CC	Low		
4	MP3-72	24.5	10889	445	C	CC	Low		
4	MP3-75	36.7	14219	388	C	CC	Low		
4	MP3-76	15.3	6493	425	C	CC	Intermediate		

Quartile	Block ID	Area (ha)	Net m3	Net m3/ha	Harvest Method	Silviculture System	Biodiversity Emphasis	Caribou Zone	Ungulate Zone
4	MP3-77	2.8	1200	424	C	CC	Intermediate		
4	MP3-80	13.5	6841	507	C	CC	Intermediate		
4	MP3-82	4.2	1430	343	A	CC	Intermediate		
4	MP3-83	1.3	530	393	A	CC	Low		
4	MP3-84	6.6	1939	387	A / C	CC	Intermediate		
4	MP3-87	2.8	1120	405	C	CC	Intermediate	Inter Caribou	
4	MP3-90	2.9	1266	432	C	CC	Intermediate	Inter Caribou	
4	MP3-91	15.5	7933	513	C	CC	Intermediate	Inter Caribou	
4	MP3-94	13.5	6620	489	C	CC	Intermediate		
4	MP3-95	31.2	13923	446	A	CC	Low / Inter	Inter Caribou	
4	MP3-97	20.6	8402	408	A	CC	Low / Inter	Inter Caribou	
4	MP3-98	9.0	4742	524	A	CC	Low	Inter Caribou	
4	MP3-99	20.9	9296	445	A	CC	Low / Inter	Inter Caribou	
Quartile 4 Totals		1134.6	513159	453					

**APPENDIX B**  
OGSI Curve Data



## **APPENDIX C**

### **MP#3 Information Package Report**

(Submitted under separate cover.)