

Defined Forest Area

The SFMP pertains to all lands for which Interfor's Coast Forest Operation has management responsibilities. The Defined Forest Area (DFA) of International Forest Products Limited – Coast Forest Operations, includes the Tree Farm Licences (TFL), Forest Licences (FL) and Timber Sale Licences (TSL) spread across all the Timber Supply Areas (TSA) of coastal British Columbia as listed in Table 1.

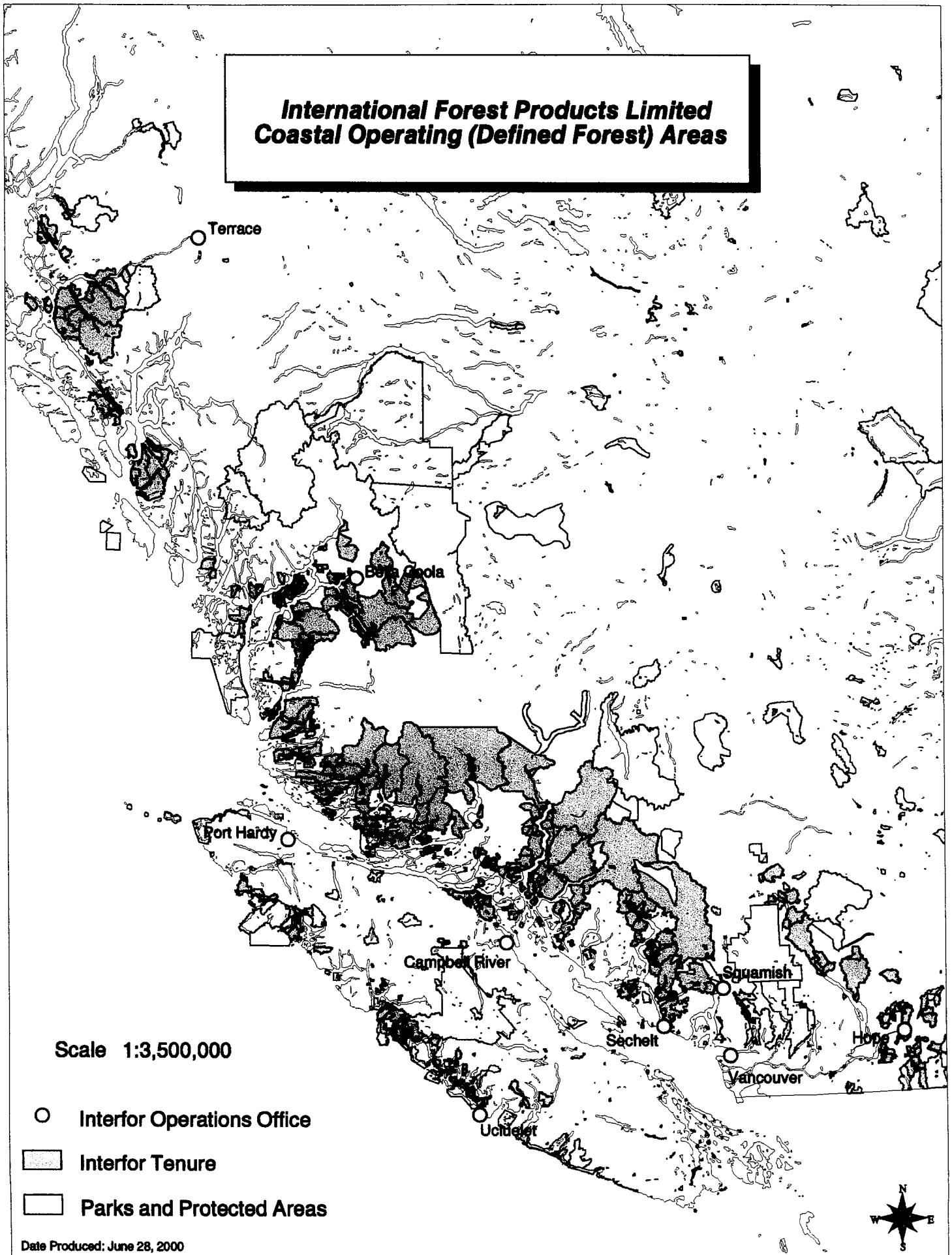
Table 1: List of Licences within the DFA

Toba Inlet	TFL 10		Port Hardy	T0403	Actaeon/War
Squamish	TFL 38		Port Hardy	T0406	Gilford
Knight Inlet	TFL 45		Port Hardy	T0432	Caviar
Clayoquot Sound	TFL 54		Port Hardy	T0443	Jennis Bay
Fraser TSA	FL A19203		Port Hardy	T0452	Huaskin Lake
Soo TSA	FL A19209		Port Hardy	T0466	Huaskin Lake
Sunshine TSA	FL A19220		Port Hardy	T0478	Actaeon/War
Sunshine TSA	FL A19224		Port Hardy	T0485	Actaeon/War
Strathcona TSA	FL A19232		Mid Coast	T0356	No Name
Arrowsmith TSA	FL A19235		Mid Coast	T0941	No Name
Kingcome TSA	FL A19238		Mid Coast	T0364	Hotsprings
North Coast TSA	FL A16841		Mid Coast	T0945	Hotsprings
Mid Coast TSA	FL A16850		Mid Coast	T0377	Westside
Fraser TSA	TSL A20477		Mid Coast	T0952	Westside
Empire	T0330	Forestry	Mid Coast	T0385	Camp Two
Empire	T0345	Grand Cr	Mid Coast	T0959	Camp Two
Empire	T0352	Brandt/Norton	Mid Coast	T0398	Taleomey
Empire	T0361	Meslilloet	Mid Coast	T0407	Noeick/S Bent
Empire	T0372	Indian R	Mid Coast	T0411	Nootum
Sechelt	T0147	Glacial Cr	Mid Coast	T0416	Restoratr Bay
Sechelt	T0162	Smanit Cr	Mid Coast	T0438	Kwatna Inlet
Sechelt	T0392	Vancouver B	Mid Coast	T0462	Wolverine
Hope	T0446	Stave River	Mid Coast	T0474	HoleintheWall
Hope	T0463	Stave Lake	Mid Coast	T0980	HoleintheWall
Hope	T0471	Emory	Mid Coast	T0483	Fog/Jenny
Hope	T0776	Jones Lake	Mid Coast	T0973	Jenny/Green
Campbell River	T0122	Phillips Lake	Mid Coast	T0499	Jenny
Campbell River	T0404	Quatum/Pryce	Mid Coast	T0511	Nusatsum
Campbell River	T0413	Elk Bay	Mid Coast	T0518	Tseapseahoolz
Campbell River	T0417	Port Neville	Mid Coast	T0572	Cousins
Campbell River	T0424	Port Neville	Mid Coast	T0608	Labouchere
Campbell River	T0426	Forward Hbr	Mid Coast	T0644	Windy Bay
TFL 10	T0050	Brem River	Mid Coast	T0650	Nooseseck
TFL 45	T0016	Phillips Arm	Mid Coast	T0690	Clyak River/
TFL 45	T0027	Phillips Arm	Mid Coast	T0964	Moses
TFL 45	T0044	Phillips Arm	Mid Coast	T0697	Draney
West Coast	T0174	Mooyah	Mid Coast	T0996	Lhart/Draney
West Coast	T0182	Hoiss/Tsown	Mid Coast	T0990	Big Bay
West Coast	T0193	Kleeptee	Mid Coast	T0994	Nieumiamus
West Coast	T0219	Spooke	Mid Coast	T1001	Noeick
West Coast	T0259	Hisnit	Mid Coast	T1005	Wolverine
Port Hardy	T0156	Waump	Agreements	T0703	Chehalis
Port Hardy	T0231	Actaeon/War	Agreements	T0742	Mereworth
Port Hardy	T0252	Actaeon/War	Agreements	T0754	Mereworth

The DFA is Interfor's current operating area within each TSA. The distinct boundaries of the DFA correspond to the areas where Interfor is the primary harvesting operator. The DFA includes Crown land

and private land (that is part of a TFL), and specifically excludes all Crown Lease land, Indian Reserves, Small Business Forest Enterprise Program (SBFEP) operations, FL A19214 and any areas otherwise excluded from Interfor's Chart Area or TFL land-base (refer to Maps 1-5).

International Forest Products Limited Coastal Operating (Defined Forest) Areas



Scale 1:3,500,000

- Interfor Operations Office
- ▨ Interfor Tenure
- ▭ Parks and Protected Areas

Date Produced: June 28, 2000

