


INTERFOR

International Forest Products Limited

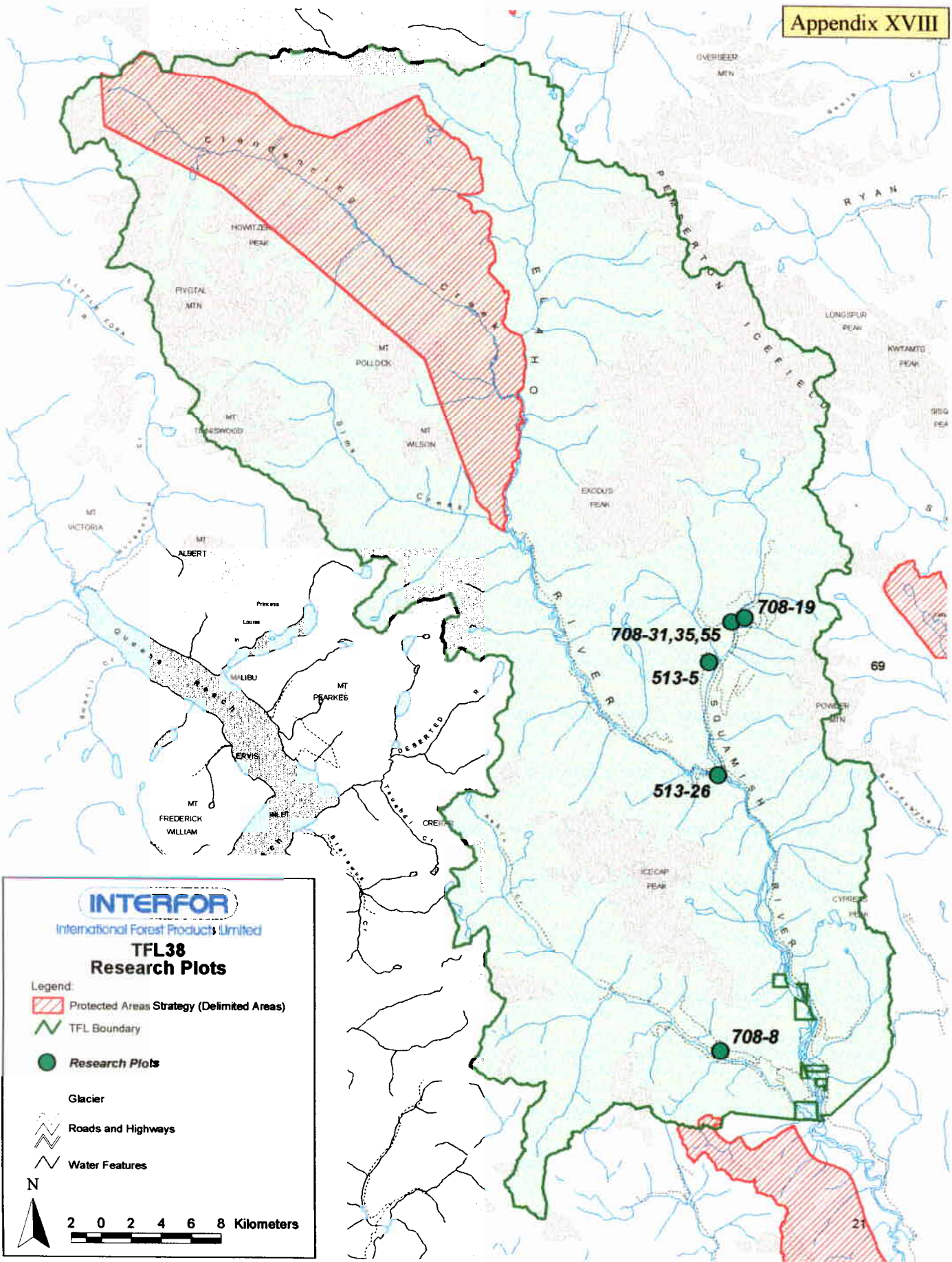
TFL38 Research Plots

Legend:

-  Protected Areas Strategy (Delimited Areas)
-  TFL Boundary
-  Research Plots
-  Glacier
-  Roads and Highways
-  Water Features



2 0 2 4 6 8 Kilometers



INTERFOR

International Forest Products Limited

**TFL38
Research Plots**

Legend:

Protected Areas Strategy (Delimited Areas)

TFL Boundary

Research Plots

Glacier

Roads and Highways

Water Features

N

2 0 2 4 6 8 Kilometers

EP: 708
SPECIES: Douglas-fir

CONTACT PERSON: Jack Woods
PH.NUMBER: 749-6811

TEST SITE NAME: ASHLU RIVER
TEST SITE NUMBER: 8

LATITUDE: 49 56 10 LONGITUDE: 123 21 15

ELEV: ft: 1300 m: 394

FOREST DISTRICT: Squamish

COMPANY (TENURE): Weldwood TFL #38

MAP SHEET (#, SCALE, YEAR, TYPE): 92G/14W, 1:50,000, 1957, NTS
MAP SHEET (#, SCALE, YEAR, TYPE): 92G.094, 1:20,000, 1995, BCGS

UTM EAST: 472100 UTM NORTH: 5532000
UTM EAST: 472400 UTM NORTH: 5531900
UTM EAST: 472600 UTM NORTH: 5531800

AIR PHOTOS:	FLIGHT LINE: BC5105	NUMBERS: 219-220 (219)
	SCALE: 40 chain	YEAR: 1964
	FLIGHT LINE: BC5501	NUMBERS: 131-134 (132)
	SCALE: 80 chain	YEAR: 1972
	FLIGHT LINE: A24757	NUMBERS: 23-25 (Federal)
	SCALE: 80 chain	YEAR: 1977
	FLIGHT LINE: BC80081	NUMBERS: 086-087 (087)
	SCALE: 80 chain	YEAR: 1980
	FLIGHT LINE: BC88072	NUMBERS: 241-242 (242)
	SCALE: 70 chain	YEAR: 1988

BGCZ: CWHd

PLANTING DATE: October 1975

TOTAL # OF TREES PLANTED: 2832 # OF CROSSES: 177

TYPE OF STOCK PLANTED: styro 8 plugs 1+0

SPACING: 10' x 10' REPLICATIONS: 4 # OF TREES: 4

#8 Ashlu con't

APPROXIMATE ST/HA: 671

APPROXIMATE HA: 3.52

EXTRA TAGS: 170

MEASUREMENTS:

1983 height(cm) + height(cm)	7yr + 5yr
1987 height(cm) + diameter(mm)	12yr (dia 130cm from ground)

GENERAL LOCATION: Feb 1983

-Highlander Hotel intersection Brackendale	0
-turn left	5.5km
-end of pavement - TFL Weldwood gate	28.8km
-turn left go over bridge	30.1km
-plot upper side of road	40.3km

B.C. FOREST SERVICE RESEARCH DIVISION
D. FIR BREEDING PLOT E.P. 708 # 8

ELEV. 570 m.

D. FIR 2-0 BR

STOCK 1346 - 42850

76-S-2

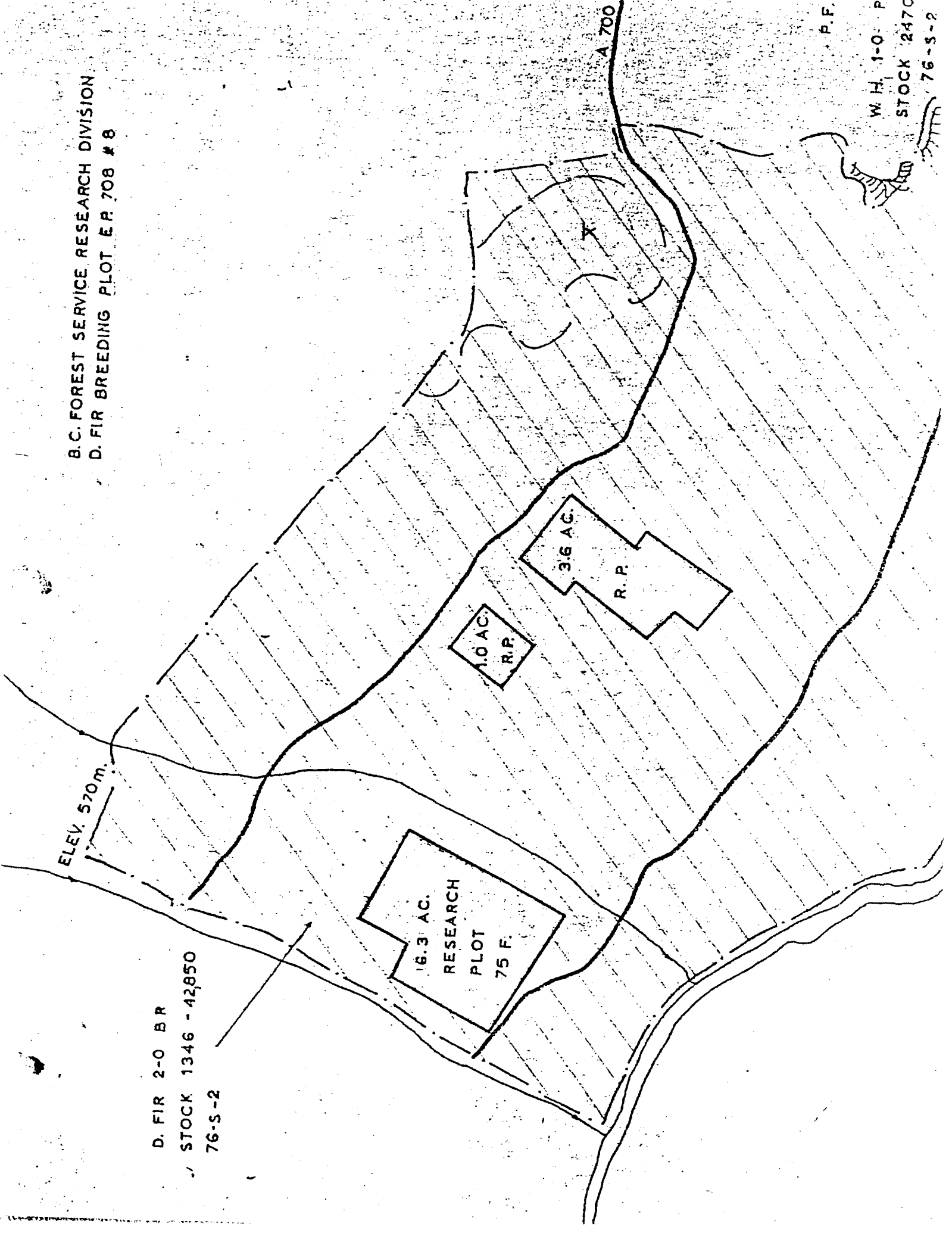
16.3 AC.
RESEARCH
PLOT
75 F.

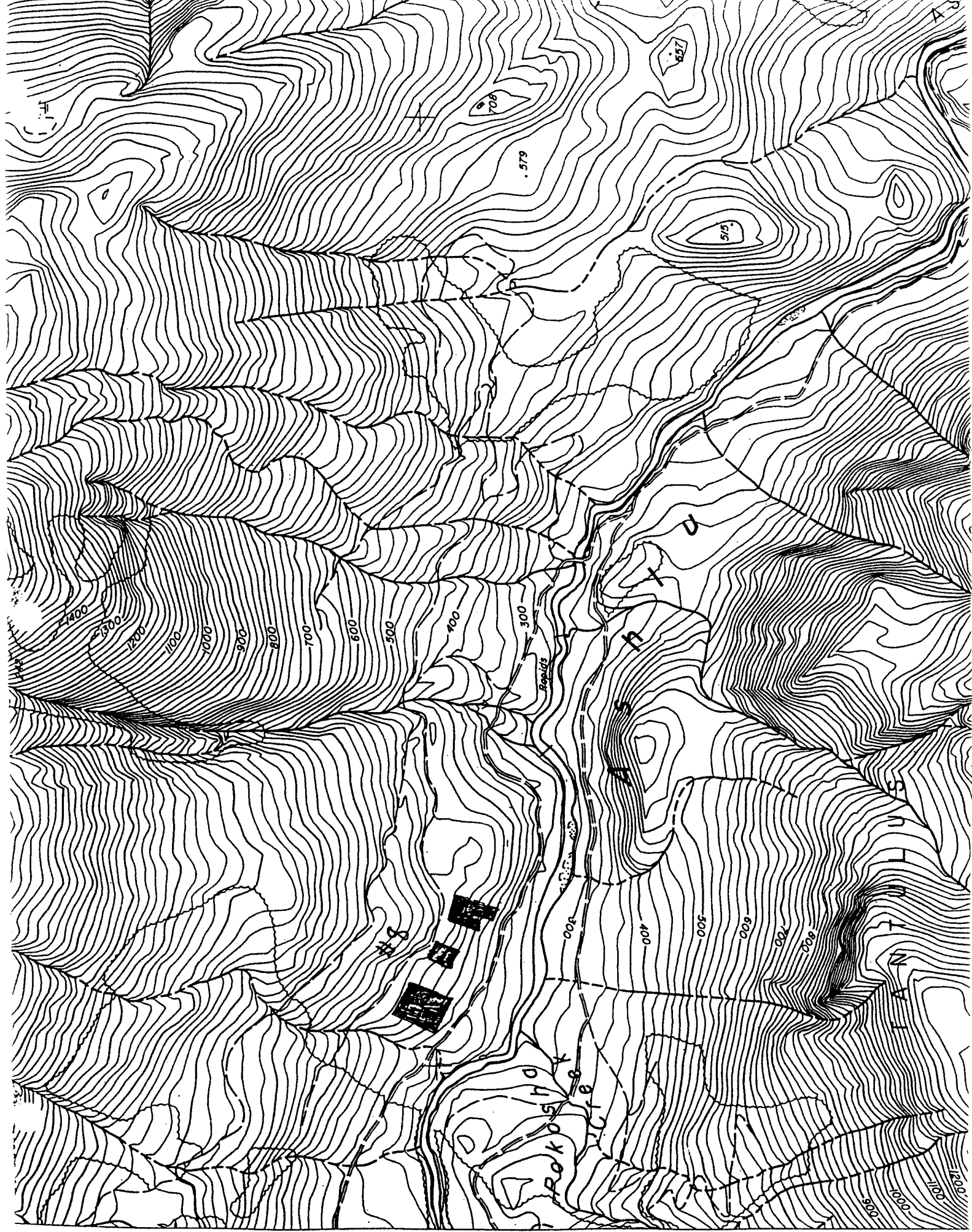
1.0 AC.
R.P.

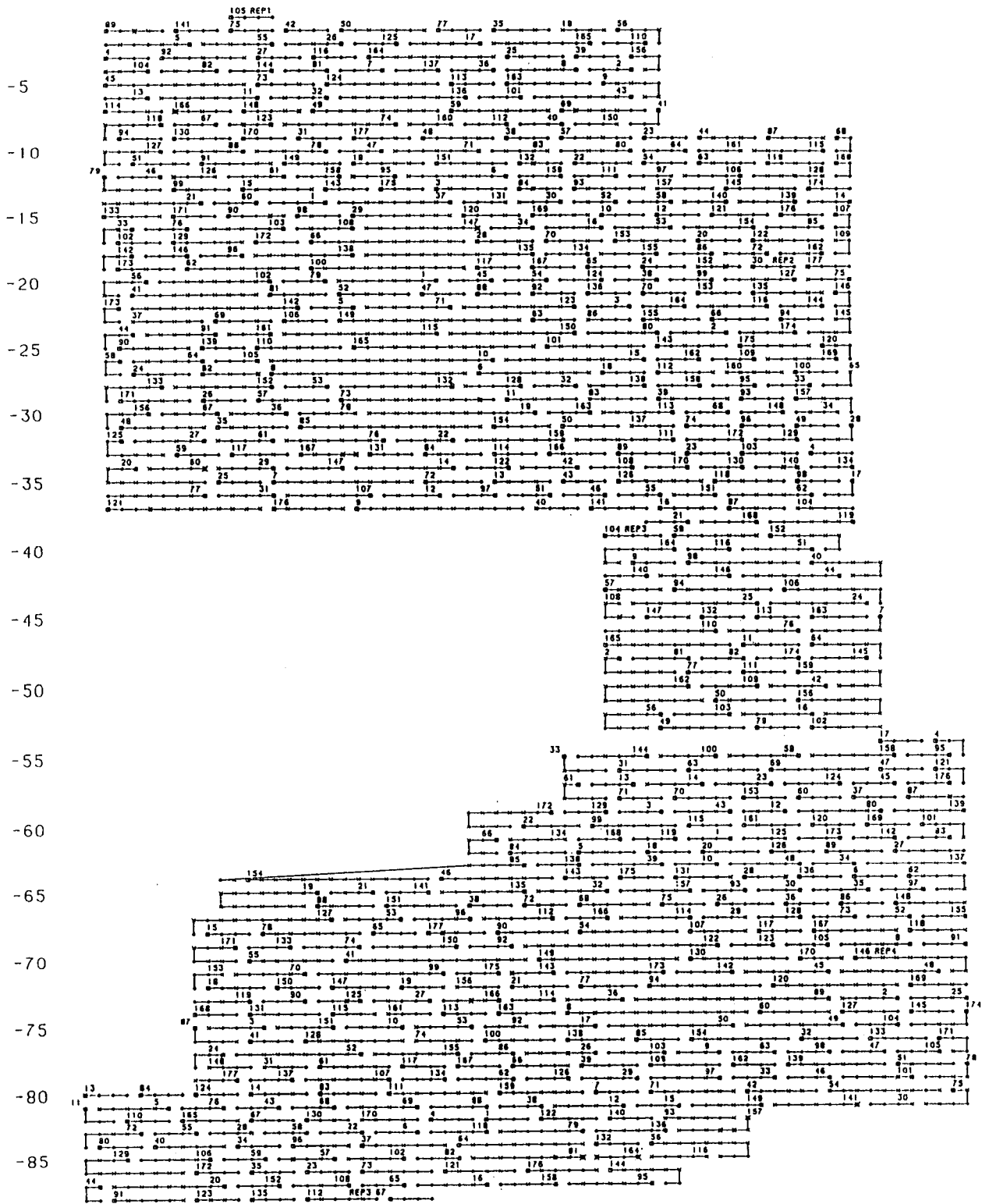
3.6 AC.
R.P.

A 700

P.F.
W.H. 1-0 P.
STOCK 2470
76-S-2







#8 ASHLU OCT 1993

- = POST POSITION
- ◇ = PLANTED TREE
- × = NOT PLANTED
- x = NO STOCK

EP: 708
SPECIES: Douglas-fir

CONTACT PERSON: Jack Woods
PH.NUMBER: 749-6811

TEST SITE NAME: SQUAMISH RIVER
TEST SITE NUMBER: 19

LATITUDE: 50 12 00 LONGITUDE: 123 22 00

ELEV: ft: 1700 m: 520

FOREST DISTRICT: Squamish

COMPANY (TENURE): Weldwood TFL #38

MAP SHEET (#, SCALE, YEAR, TYPE): 92J/3, 1:50,000, 1957, NTS
MAP SHEET (#, SCALE, YEAR, TYPE): 92J.024, 1:20,000, 1995, BCGS

UTM EAST: 473800 UTM NORTH: 5561100

AIR PHOTOS:	FLIGHT LINE: BC7520	NUMBERS: 18
	SCALE:	YEAR: 1973
	FLIGHT LINE: BC7520	NUMBERS: 132
	SCALE:	YEAR: 1973
	FLIGHT LINE: A24777	NUMBERS: 160-161 (160)
	SCALE:	YEAR: (federal)
	FLIGHT LINE: A24777	NUMBERS: 190-191 (190)
	SCALE:	YEAR: (federal)
	FLIGHT LINE: BC87098	NUMBERS: 088-089 (088)
	SCALE: 70 chain	YEAR: 1987

BGCZ: CWHd

PLANTING DATE: October 1976

TOTAL # OF TREES PLANTED: 2496 # OF CROSSES: 156

TYPE OF STOCK PLANTED: styro 8 plugs 1+0

SPACING: 10' x 10'

REPLICATIONS: 4

APPROXIMATE ST/HA: 850

APPROXIMATE HA: 2.46

#19 Squamish con't

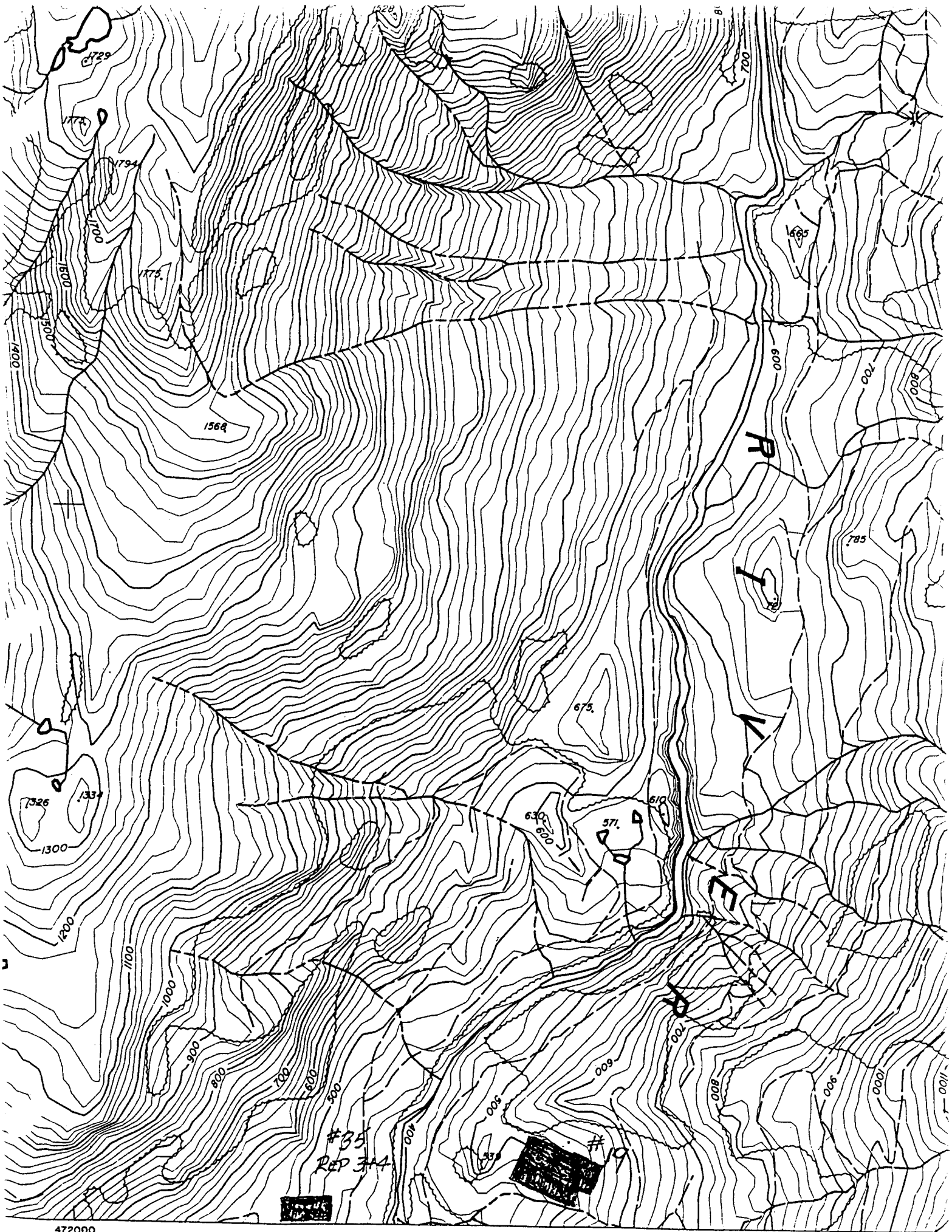
EXTRA TAGS: 50

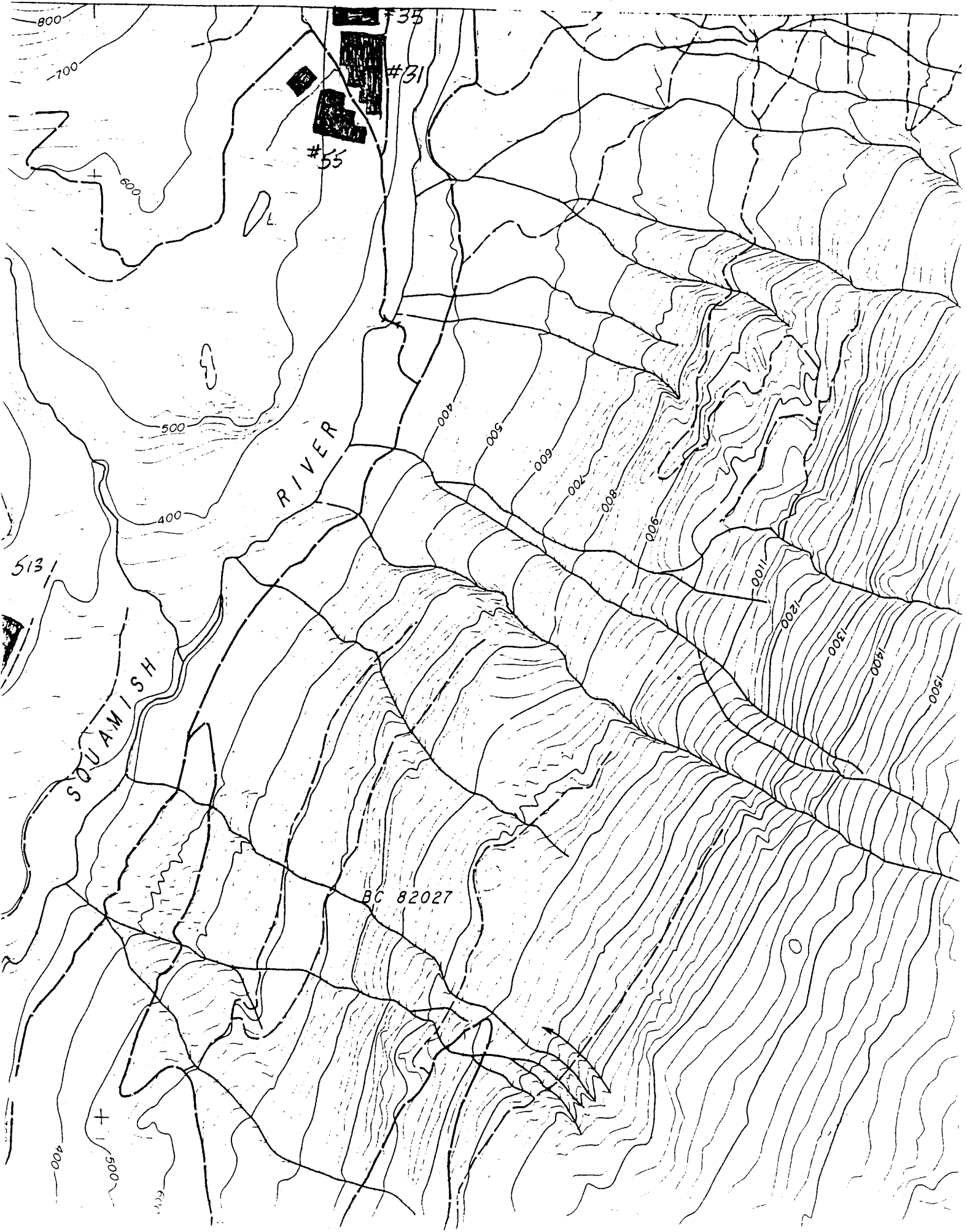
MEASUREMENTS:

1983	height(cm) + height(cm)	7yr + 6yr
1988	height(cm) + diameter(mm)	12yr (dia 130cm from ground)

GENERAL LOCATION:

-traffic light at Brackendale, head north	0
-left to Squamish Valley	5.4km
-junction of Br. 400, continue straight to plot	65.5km
-keep left	66.0km
-keep left	67.0km
-turn right onto Spur road	67.5km
-park and take trail	67.7km





#55

#35

#31

RIVER

5131

SQUAMISH

BC 82027

800

700

600

500

400

400

500

600

700

800

900

1100

1200

1300

1400

1500

400

500

600

D. FIR 2-0 B.R.
STOCK 1346 -47.7 M.
76-S-3

D. FIR 2-0 BR.
STOCK 1346 -2675 M
75-S-4

SQUAMISH RIVER

EAST MAIN

ELV. 420 m.

009 S

E.R. 708

1-0 DF, STYRO B PLUG

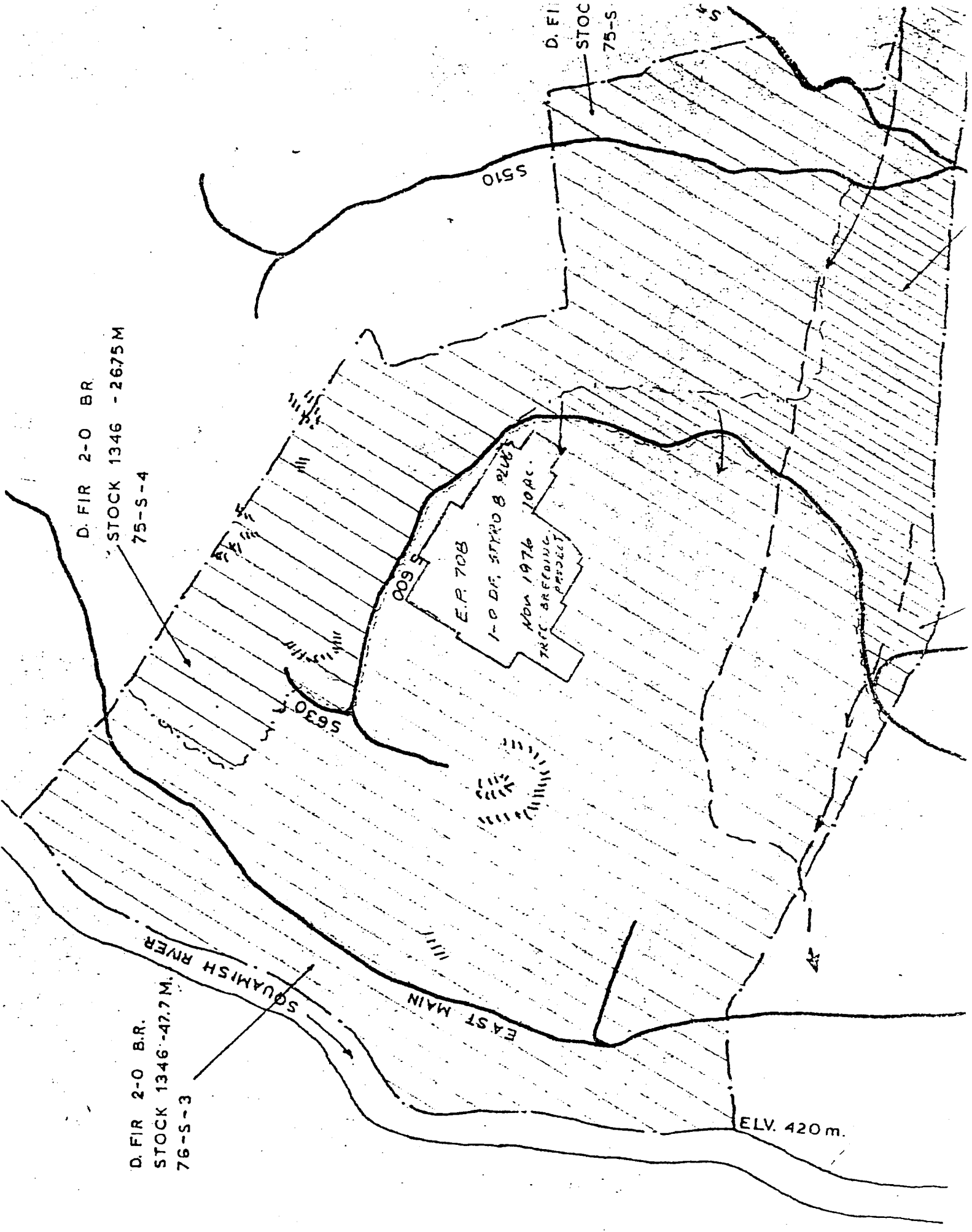
Nov 1976 10Ac.
TREE BREEDING
PROJECT

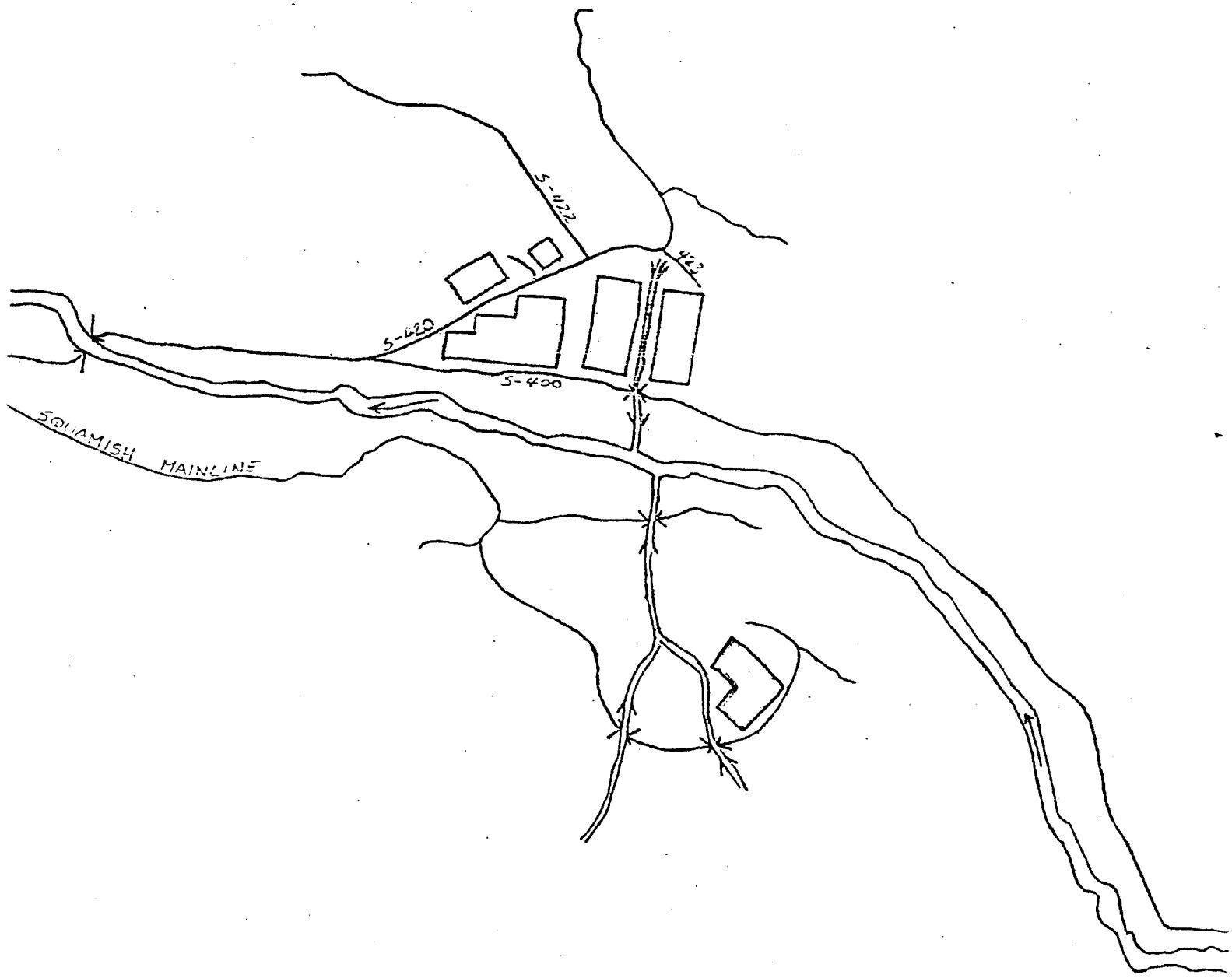
5630

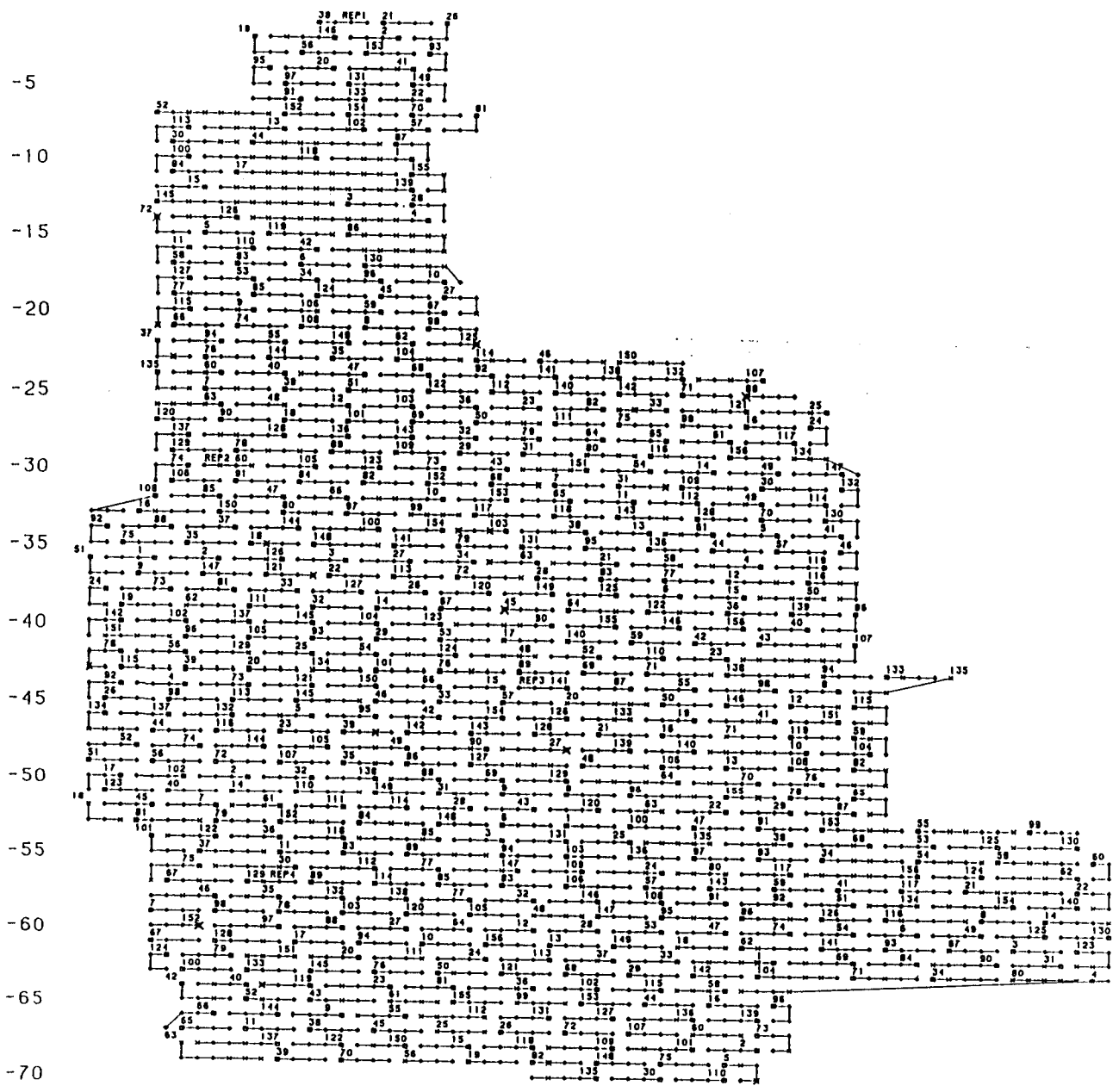


D. FI
STOC
75-S

5510







#19 SQUAMISH RIVER OCT 1993

- POST POSITION
- ◇ PLANTED TREE
- × NOT PLANTED
- ⊞ NO STOCK

EP: 708
SPECIES: Douglas-fir

CONTACT PERSON: Jack Woods
PH.NUMBER: 749-6811

TEST SITE NAME: SQUAMISH RIVER
TEST SITE NUMBER: 31

LATITUDE: 50 12 05 LONGITUDE: 123 22 30

ELEV: ft: 1550 m: 470

FOREST DISTRICT: Squamish

COMPANY (TENURE): Weldwood TFL #38

MAP SHEET (#, SCALE, YEAR, TYPE): 92J/3, 1:50,000, 1957, NTS
MAP SHEET (#, SCALE, YEAR, TYPE): 92J.014, 1:20,000, 1983, BCGS

UTM EAST: 473000 UTM NORTH: 5560300

AIR PHOTOS:	FLIGHT LINE: A24777	NUMBERS: 160-161 (160)
	SCALE:	YEAR: (federal)
	FLIGHT LINE: A24777	NUMBERS: 190-191 (191)
	SCALE:	YEAR: (federal)
	FLIGHT LINE: BC87098	NUMBERS: 088-089 (089)
	SCALE: 70 chain	YEAR: 1987

BGCZ:

PLANTING DATE: October 1977

TOTAL # OF TREES PLANTED: 2640 # OF CROSSES: 165

TYPE OF STOCK PLANTED: styro 8 plugs 1+0

SPACING: 10' x 10' REPLICATIONS: 4

APPROXIMATE ST/HA: 775 APPROXIMATE HA: 2.84

EXTRA TAGS: 63

#31 Squamish con't

MEASUREMENTS:

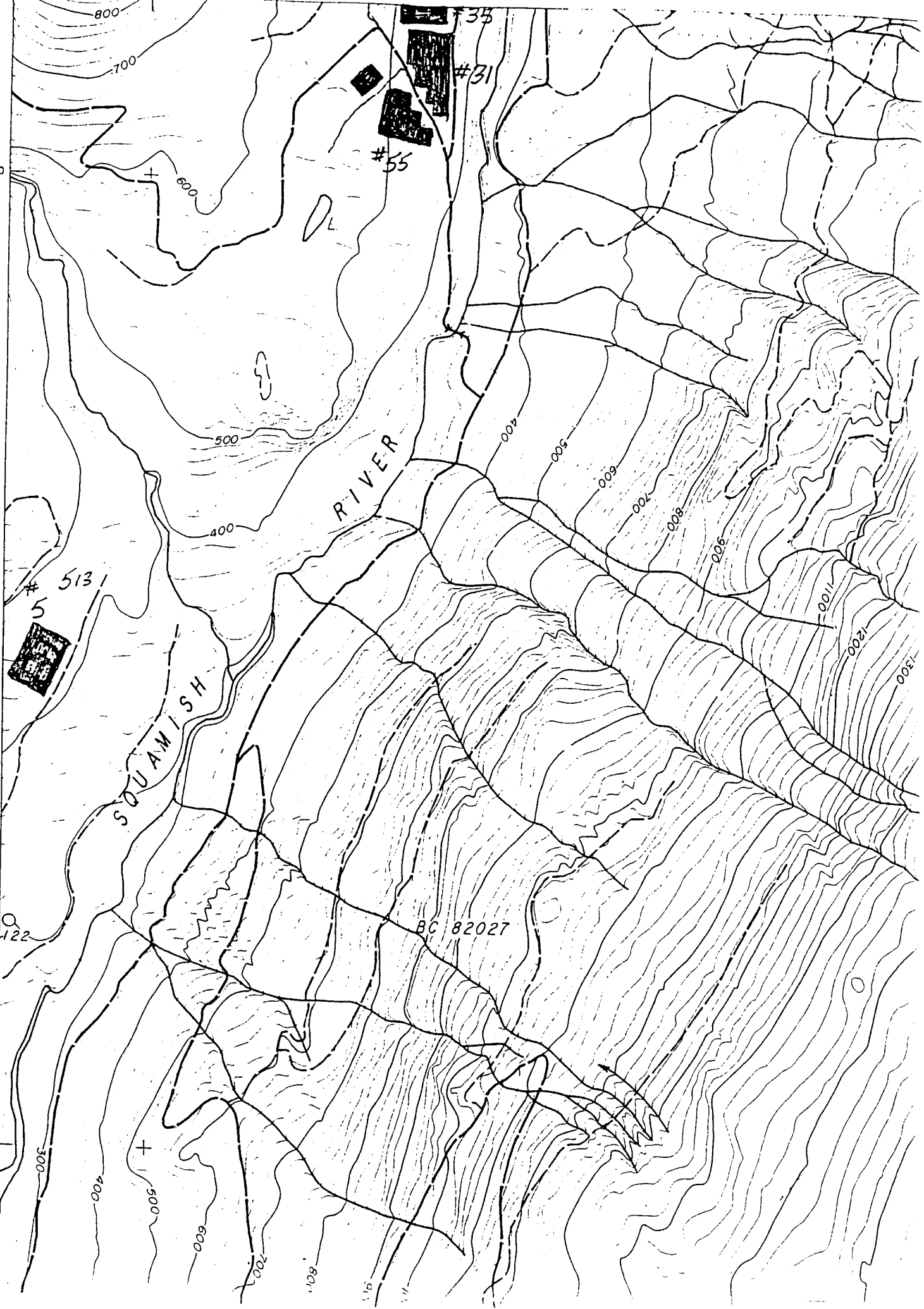
1984 height(cm) + height(cm)	7yr + 5yr
1989 height(cm) + diameter(mm)	12yr (dia 130cm from ground)

GENERAL LOCATION:

-traffic light at Brackendale, head north	0
-left to Squamish Valley	5.4km
-turn left, Br. 400	65.5km
-keep right	66.1km
-plot on left	66.3km

556000

556000



5131

RIVER

SQUAMISH

BC 82027

#35

#31

#55

122

500

600

700

800

900

1000

400

500

600

700

800

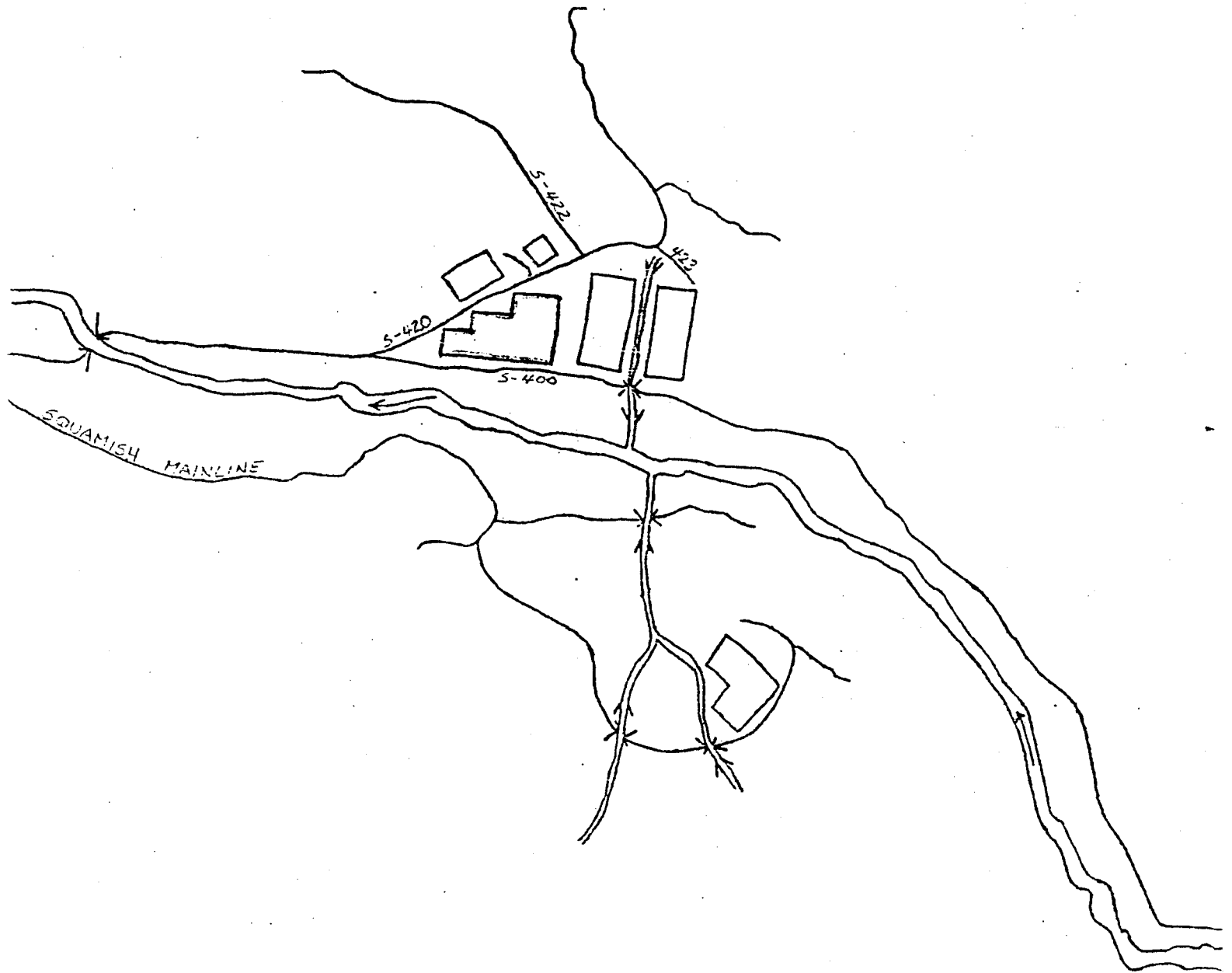
900

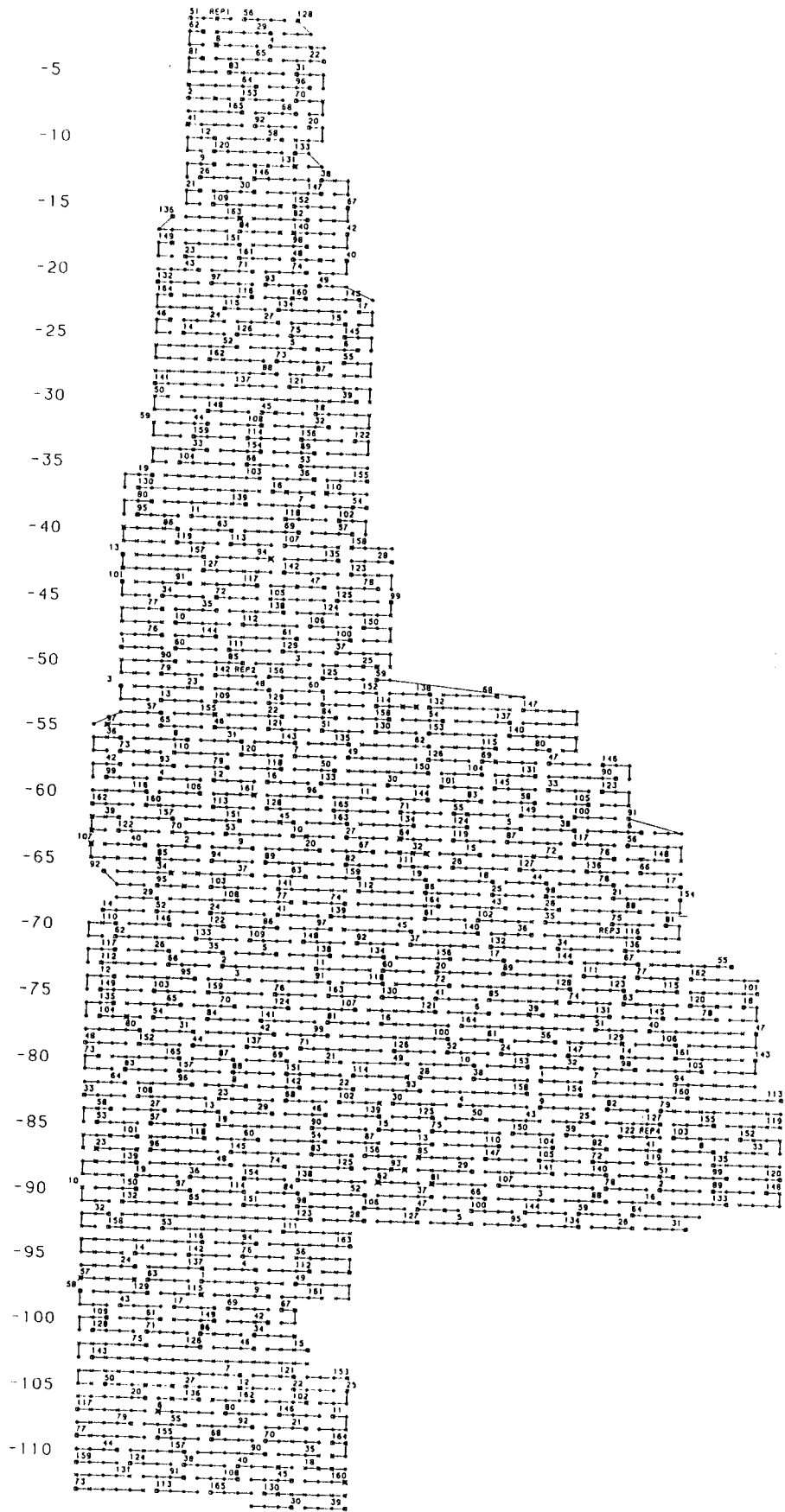
1000

1100

1200

1300





#31 SQUAMISH RIVER NOV 1993

- POST POSITION
- PLANTED TREE
- ⊗ NOT PLANTED TREE

EP: 708
SPECIES: Douglas-fir

CONTACT PERSON: Jack Woods
PH. NUMBER: 749-6811

TEST SITE NAME: SQUAMISH RIVER
TEST SITE NUMBER: 35

LATITUDE: 50 12 05 LONGITUDE: 123 22 30

ELEV: ft: 1550 m: 470

FOREST DISTRICT: Squamish

COMPANY (TENURE): Weldwood TFL #38

MAP SHEET (#, SCALE, YEAR, TYPE): 92J/3, 1:50,000, 1957, NTS
MAP SHEET (#, SCALE, YEAR, TYPE): 92J.014, 1:20,000, 1983, BCGS
MAP SHEET (#, SCALE, YEAR, TYPE): 92J.024, 1:20,000, 1995, BCGS

UTM EAST: 473000 UTM NORTH: 5560600
UTM EAST: 472800 UTM NORTH: 5561000

AIR PHOTOS:	FLIGHT LINE: A24777	NUMBERS: 160-161 (161)
	SCALE:	YEAR: (federal)
	FLIGHT LINE: A24777	NUMBERS: 190-191 (191)
	SCALE:	YEAR: (federal)
	FLIGHT LINE: BC87098	NUMBERS: 088-089 (088)
	SCALE: 70 chain	YEAR: 1987

BGCZ:

PLANTING DATE: October 1978

TOTAL # OF TREES PLANTED: 2720 # OF CROSSES: 170

TYPE OF STOCK PLANTED: styro 8 plugs 1+0

SPACING: 10' x 10'

REPLICATIONS: 4

APPROXIMATE ST/HA: 892

APPROXIMATE HA: 2.56

#35 Squamish River con't

MEASUREMENTS:

1984	height(cm)+ height(cm)	6yr + 4yr
1989	height(cm) + diameter(mm)	11yr (dia 130cm from ground)

GENERAL LOCATION:

-traffic light at Brackendale, head north	0
-left to Squamish Valley	5.4km
-turn left, Br. 400	65.5km
-keep right	66.1km
-plot on left	66.5km

5560000

RIVER

SQUAMISH

BC 82027

5131

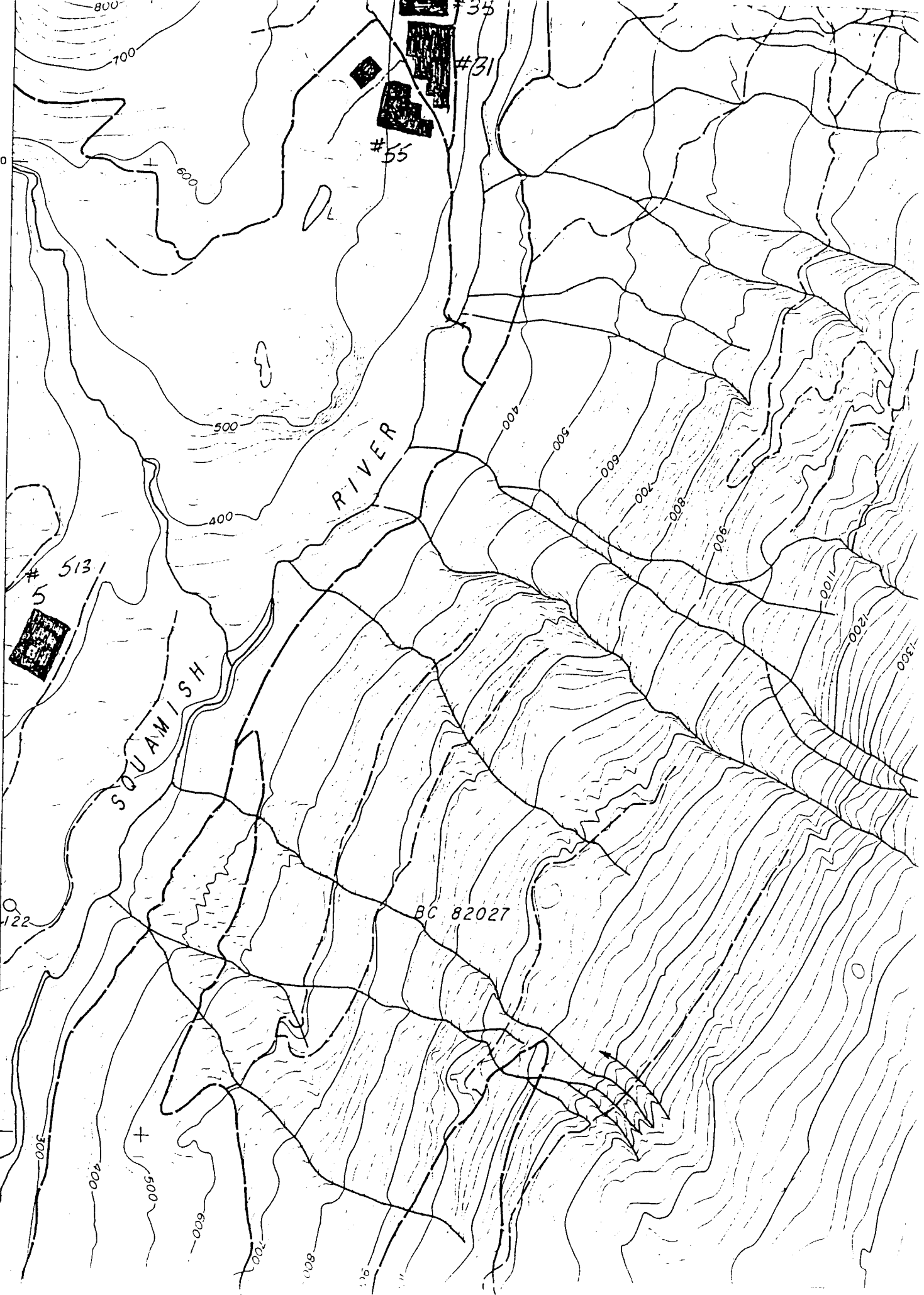
#55

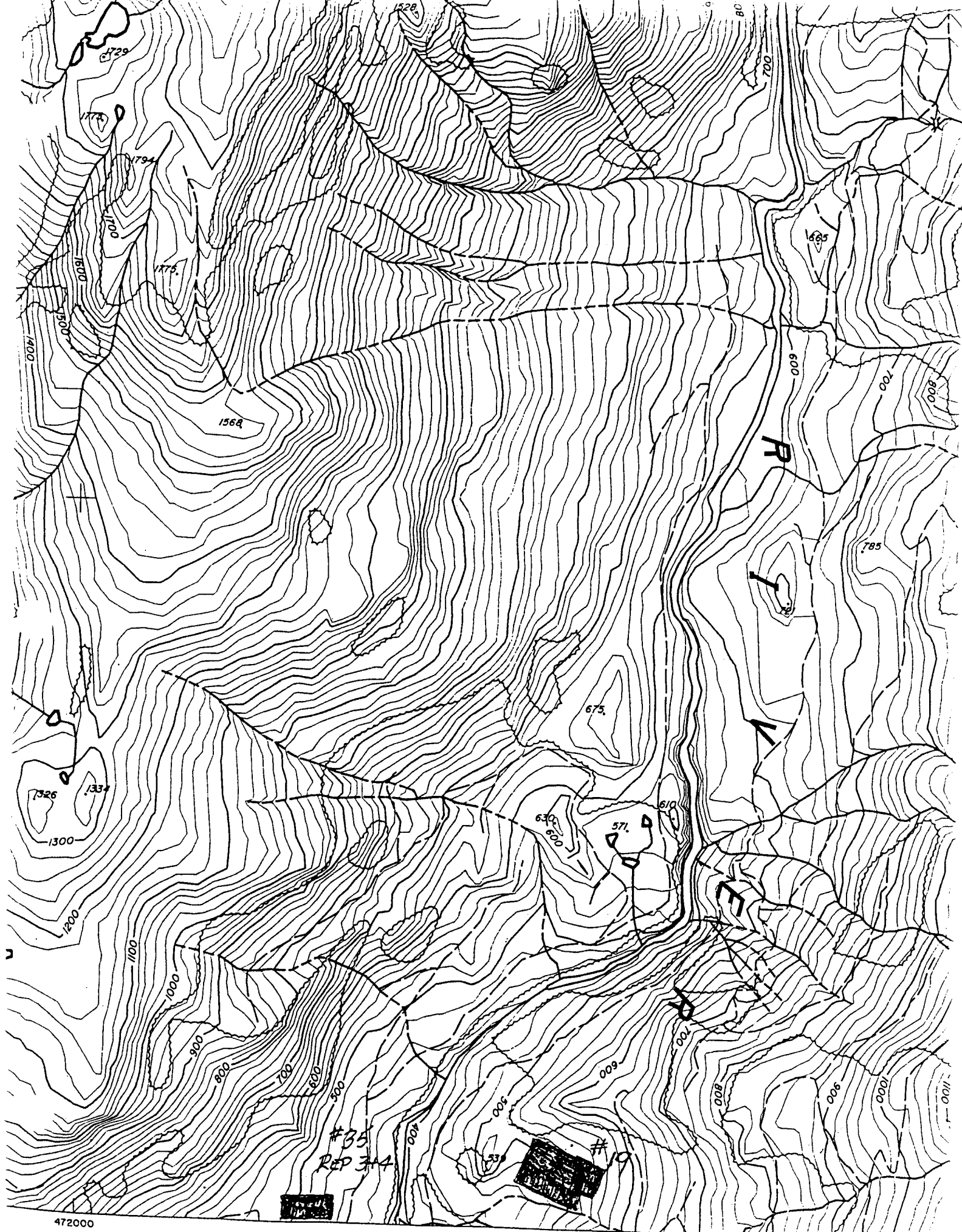
#31

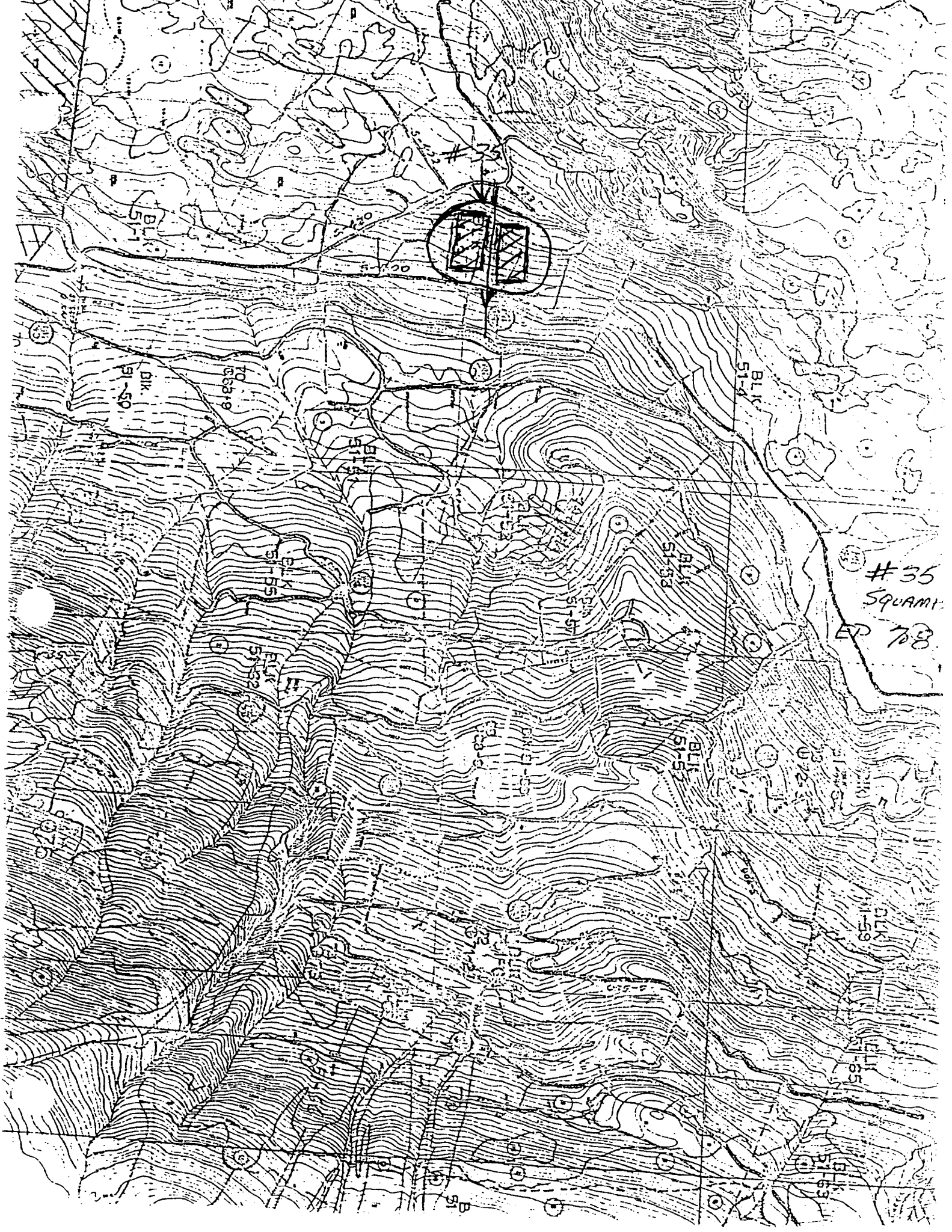
#35

122

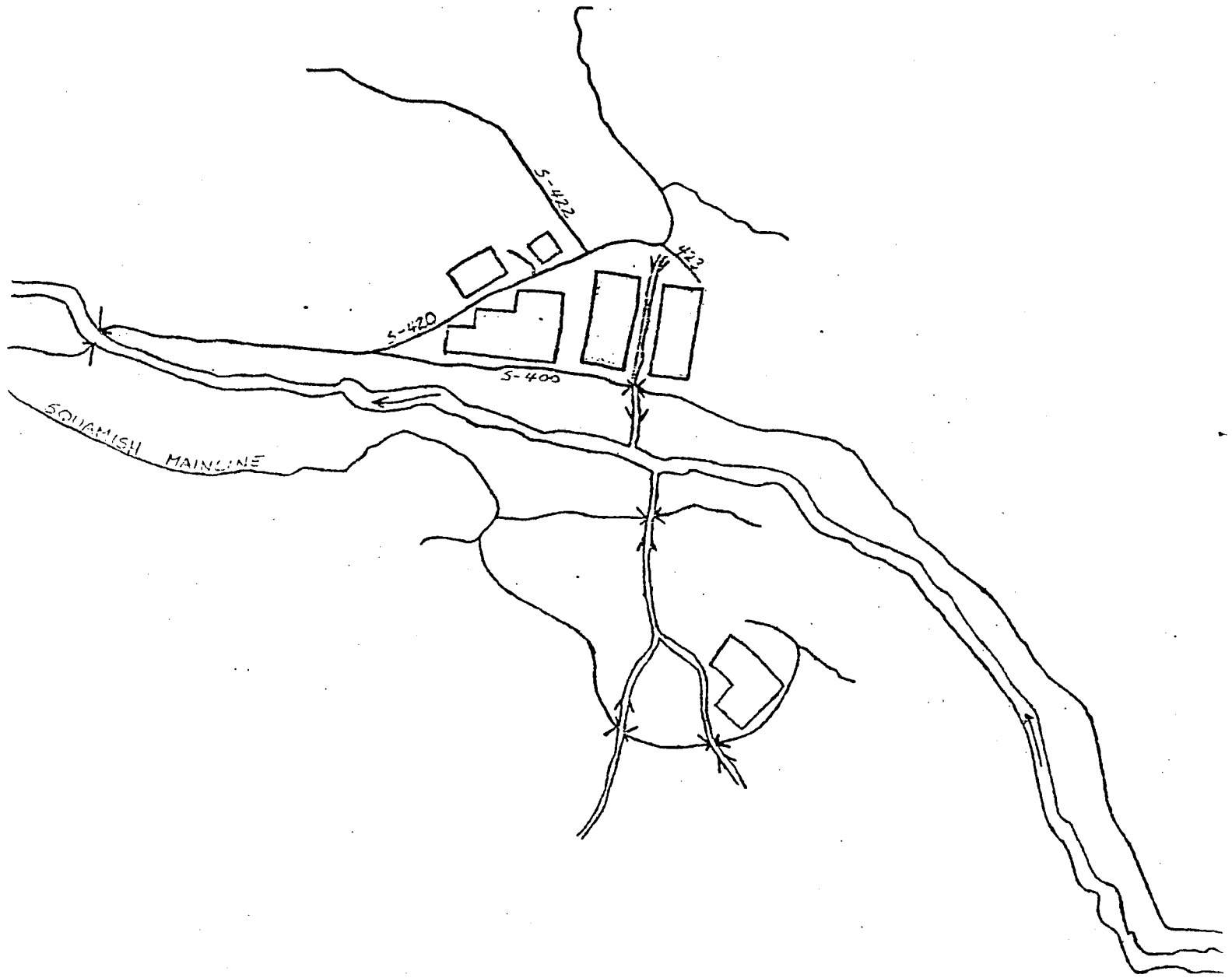
5556000

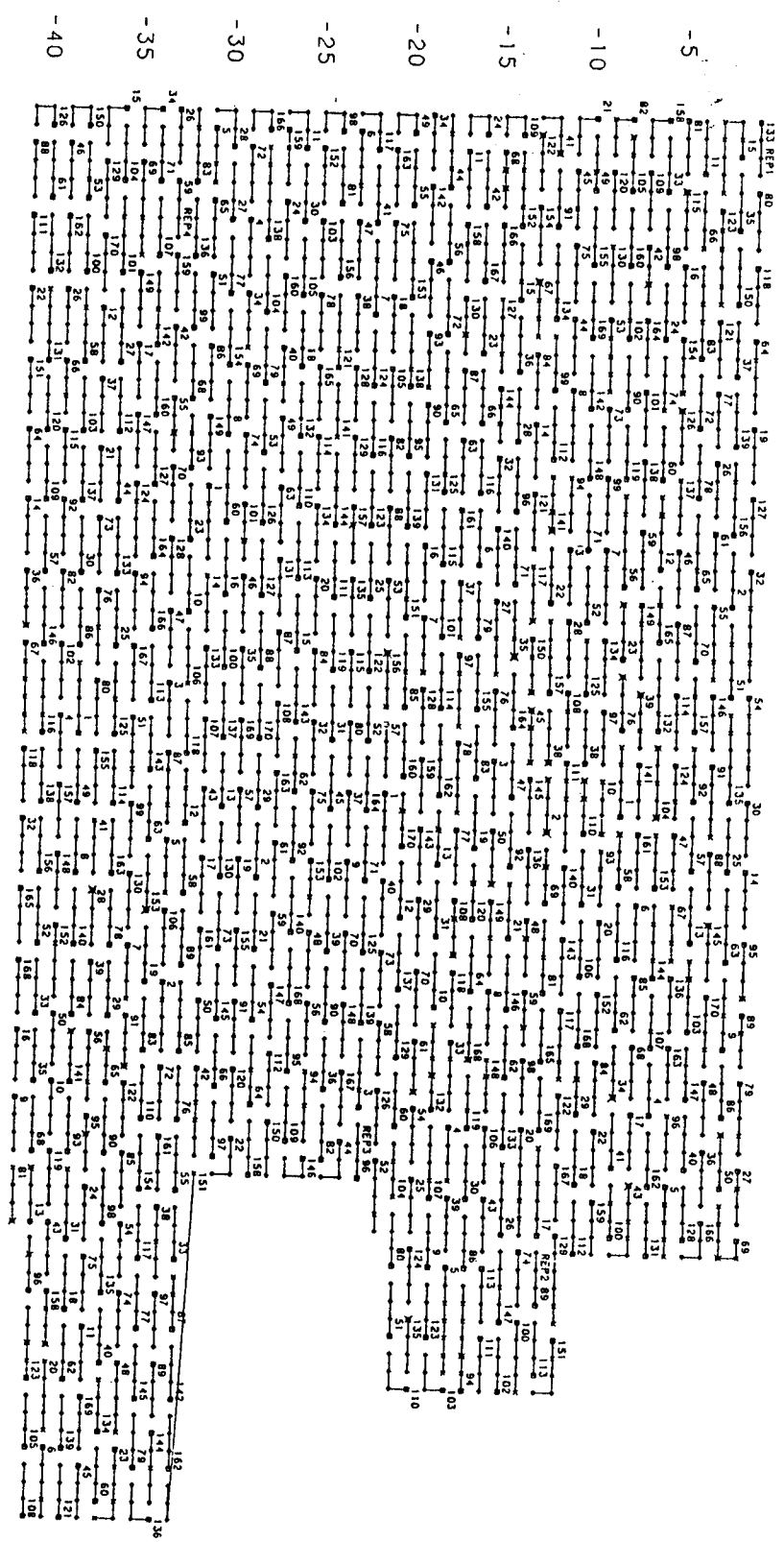






#35
SQUAMI
EP 708





#35 SQUAMISH RIVER OCT 1993

□ POST POSITION

○ PLANTED TREE

× NOT PLANTED

✕ NO STOCK

EP: 708
SPECIES: Douglas-fir

CONTACT PERSON: Jack Woods
PH.NUMBER: 749-6811

TEST SITE NAME: SQUAMISH RIVER
TEST SITE NUMBER: 55

LATITUDE: 50 12 05 LONGITUDE: 123 22 30

ELEV: ft: 1850 m: 560

FOREST DISTRICT: Squamish

COMPANY (TENURE): Weldwood TFL #38

MAP SHEET (#, SCALE, YEAR, TYPE): 92J/3, 1:50,000, 1957, NTS
MAP SHEET (#, SCALE, YEAR, TYPE): 92J.014, 1:20,000, 1983, BCGS

UTM EAST: 472900 UTM NORTH: 5560100
UTM EAST: 472800 UTM NORTH: 5560400

AIR PHOTOS:	FLIGHT LINE: A24777	NUMBERS: 160-161 (161)
	SCALE:	YEAR: 1977 (federal)
	FLIGHT LINE: A24777	NUMBERS: 190-191 (191)
	SCALE:	YEAR: 1977 (federal)
	FLIGHT LINE: BC87098	NUMBERS: 088-089 (088)
	SCALE: 70 chain	YEAR: 1987

BGCZ:

PLANTING DATE: September 1980

TOTAL # OF TREES PLANTED: 2448 # OF CROSSES: 153

TYPE OF STOCK PLANTED: styro 8 plugs 1+0

SPACING: 10' x 10'

REPLICATIONS: 4

APPROXIMATE ST/HA:
reps 1-3 = 867
rep 4 = 90
whole plot = 875

#55 Squamish River con't

APPROXIMATE HA: reps 1-3 = 1.78
 rep 4 = 0.59
 whole plot = 2.28

EXTRA TAGS: reps 1-3 = 7
 rep 4 = 2

MEASUREMENTS:

1986 height(cm) + height(cm)	7yr + 5yr
1990 height(cm) + diameter(mm)	11yr (dia 130cm from ground)

GENERAL LOCATION:

-traffic lights at Brackendale, head north	0
-left to Squamish Valley	5.4km
-turn left, Br. 400	65.5km
-turn left	66.1km
-plot on left	66.3km

5560000

RIVER

SQUAMISH

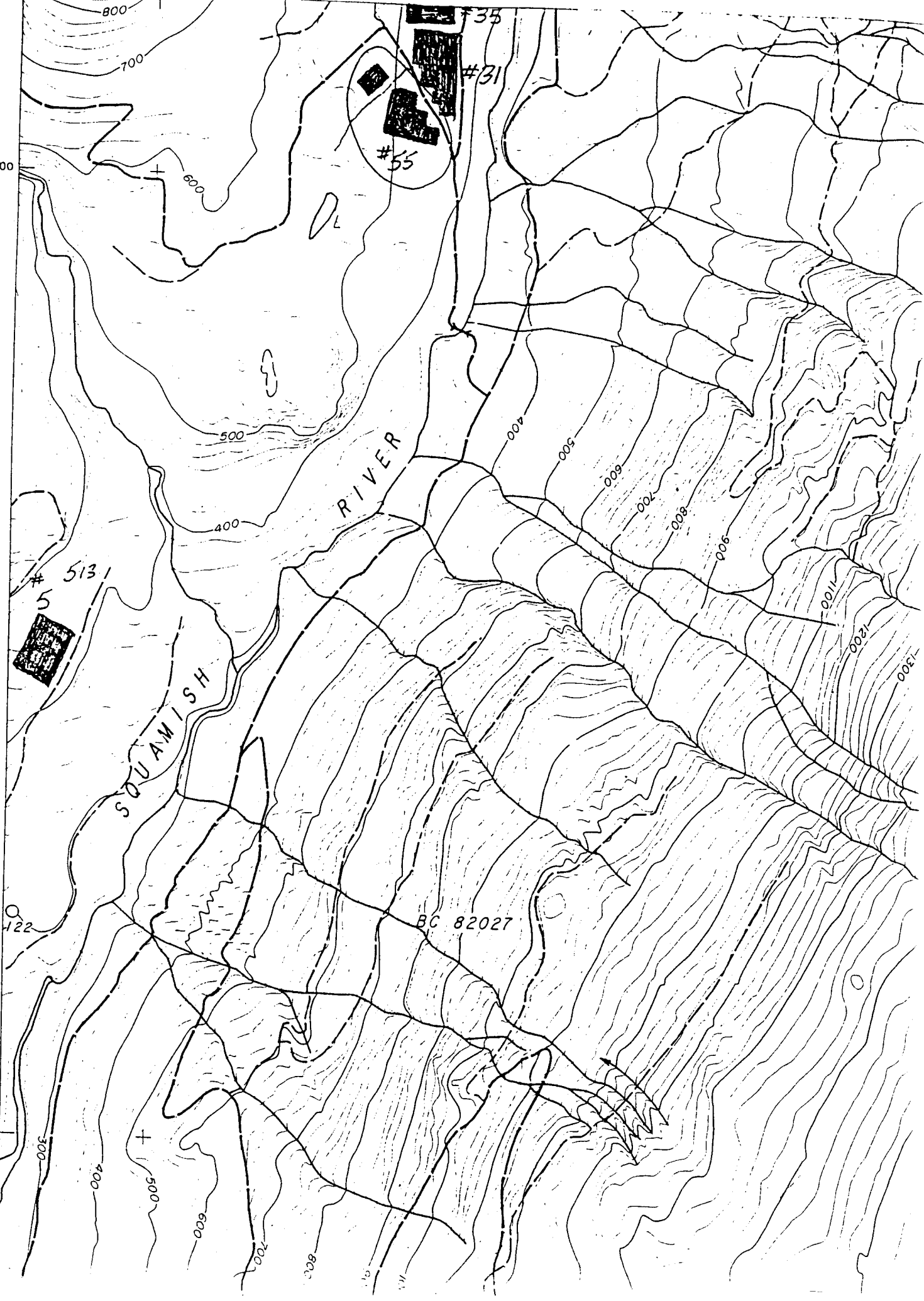
BC 82027

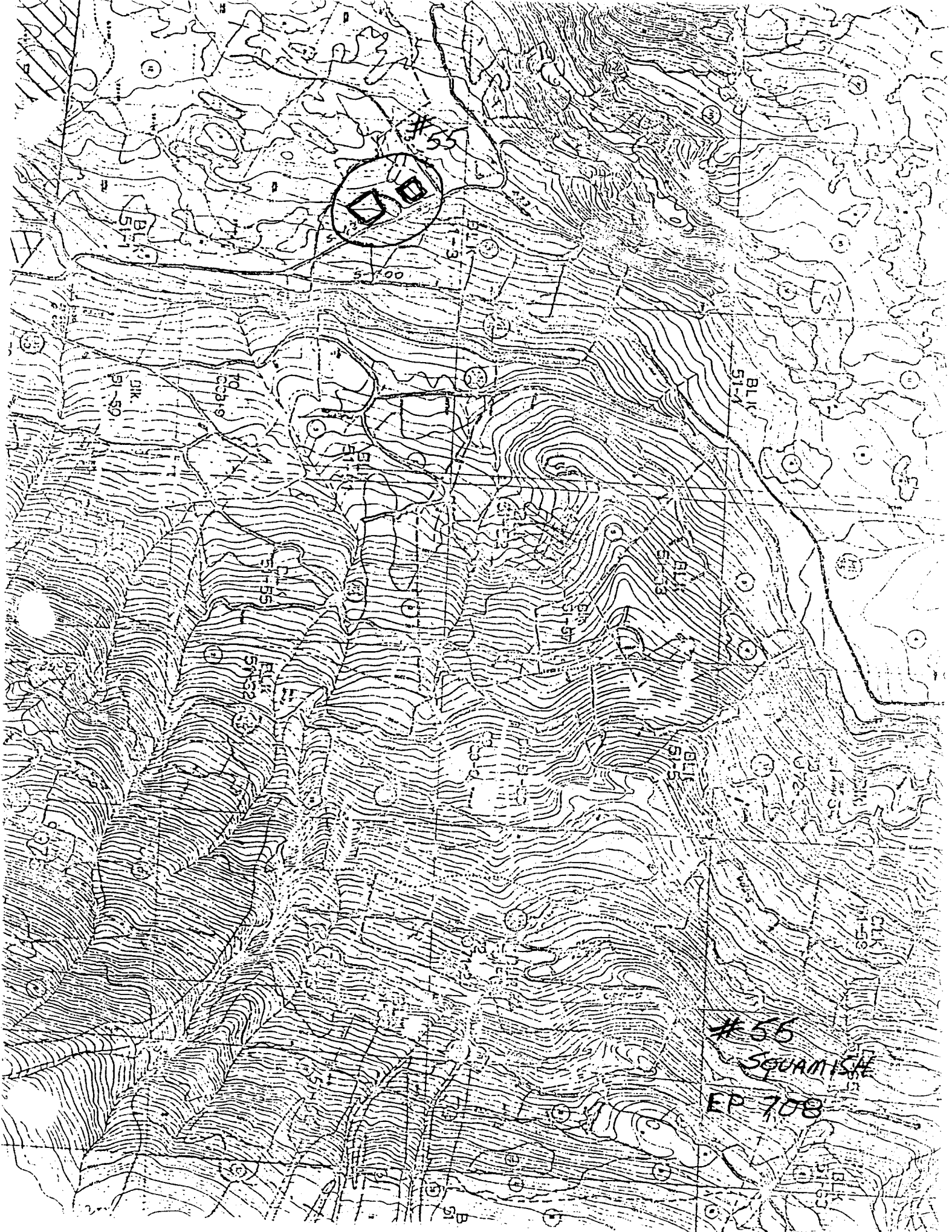
#35
#31
#55

#513
5

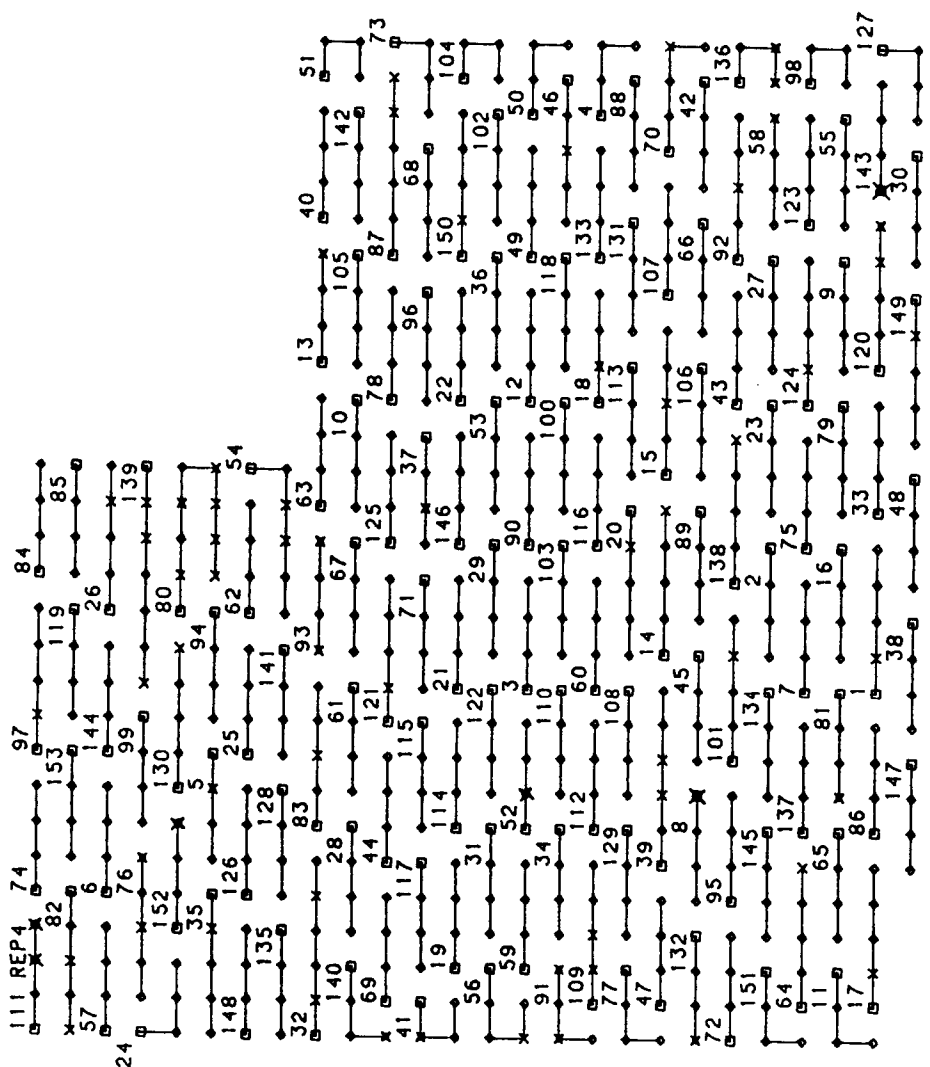
122

5556000





#55
SQUAMISH
EP 708



-75

-80

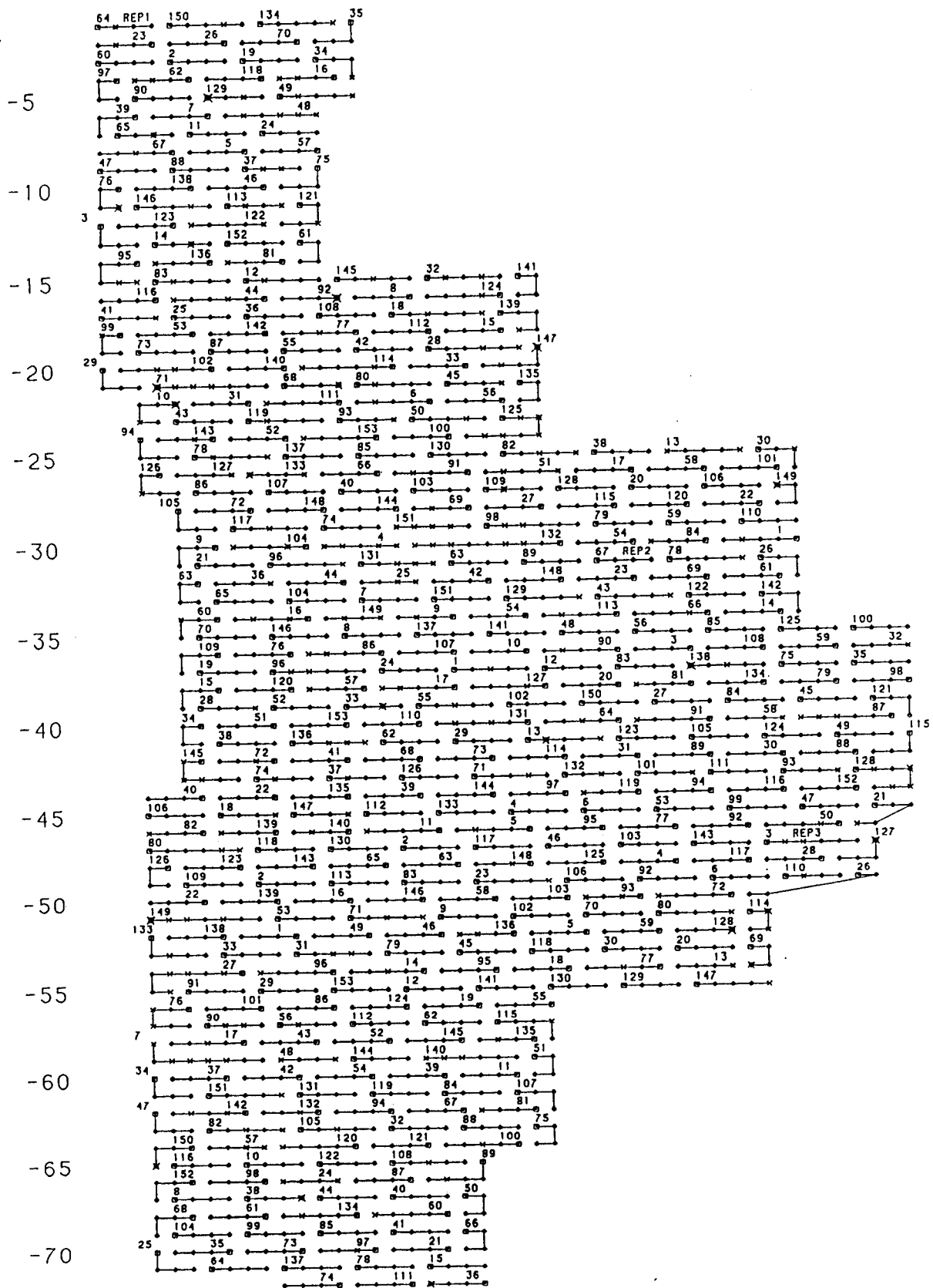
-85

-90

-95

#55 SQUAMISH RIVER REP 4 FEB 1991

- = POST POSITION
- ◇ = PLANTED TREE
- X = NOT PLANTED
- ⊗ = NO STOCK



#55 SQUAMISH RIVER REPS 1-3 FEB 1991

- = POST POSITION
- ◇ = PLANTED TREE
- × = NOT PLANTED
- × = NO STOCK

EP: 513
SPECIES: Douglas-fir

CONTACT PERSON: Jack Woods
PH.NUMBER: 749-6811

TEST SITE NAME: SQUAMISH RIVER
TEST SITE NUMBER: 5

LATITUDE: 50 11 00 LONGITUDE: 123 24 00

ELEV: ft: 1400 m: 427

FOREST DISTRICT: Squamish

COMPANY (TENURE): Weldwood TFL #38

MAP SHEET (#, SCALE, YEAR, TYPE): 92J/3, 1:50,000, 1957, NTS
MAP SHEET (#, SCALE, YEAR, TYPE): 92J.014, 1:20,000, 1983, BCGS

UTM EAST: 471500 UTM NORTH: 5557900

AIR PHOTOS:	FLIGHT LINE: BC5103	NUMBERS: 112-113
	SCALE:	YEAR:
	FLIGHT LINE: BC87098	NUMBERS: 088-089 (089)
	SCALE: 70 chain	YEAR: 1987

BGCZ: ESSF

PLANTING DATE: May 1967

TOTAL # OF TREES PLANTED: 2988 # OF CROSSES: 32

TYPE OF STOCK PLANTED: 1+1 transplants

SPACING: 10' x 10'

REPLICATIONS: 2

APPROXIMATE ST/HA: 651

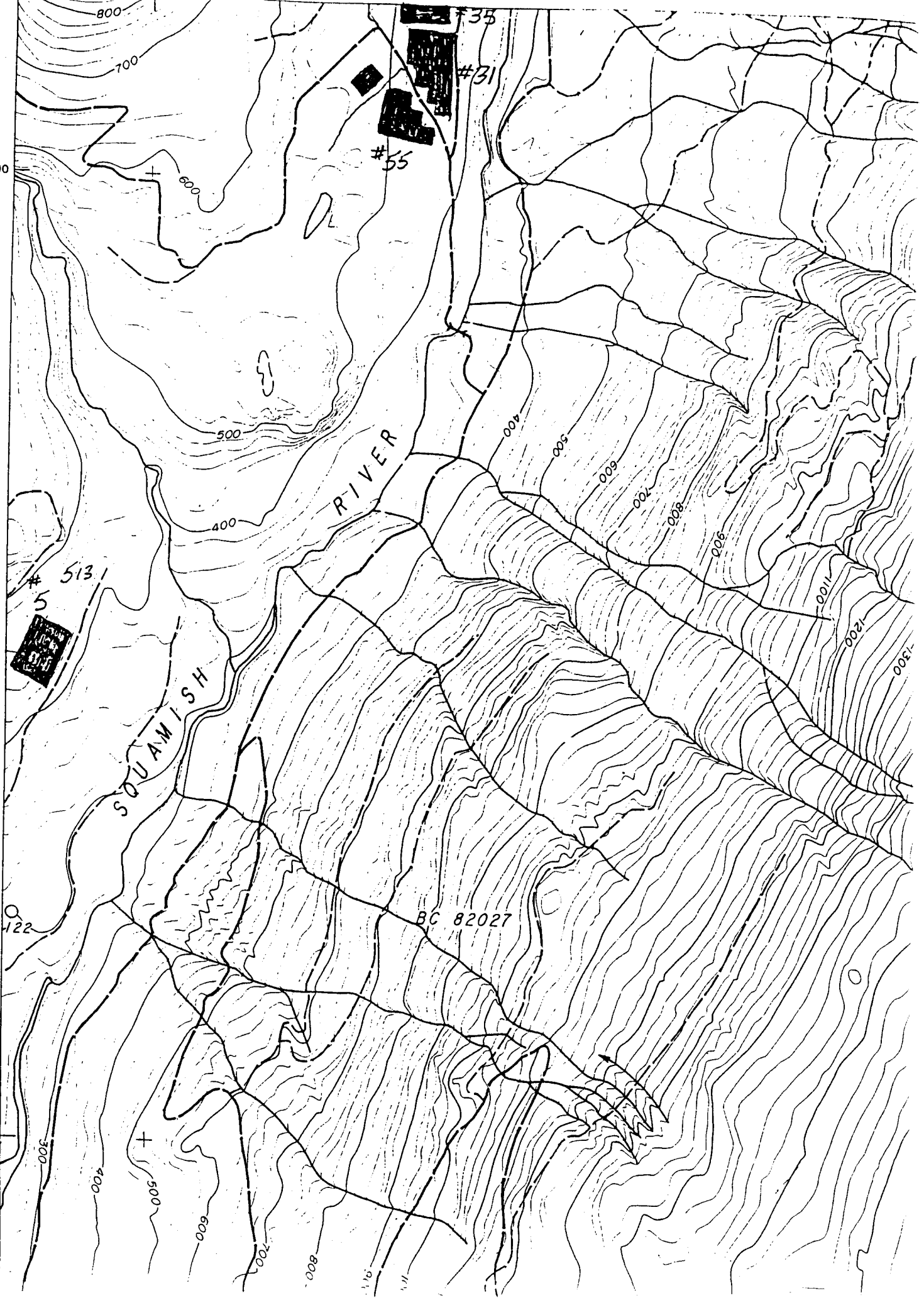
APPROXIMATE HA: 2.74

MEASUREMENTS:

1969 height(cm) & growth(cm)	5yr
1972 height(cm) & diameter(mm)	8yr (dia varying heights)
1975 height(cm) & diameter(mm)	11yr (dia 50cm from ground)
1984 height(cm) & diameter(mm)	20yr (dia 135cm or dbh)

5560000

5556000



AND DISTRICT...New Westminster
Region No.....Compt. No.....
of Weldwood Operations Map

BRITISH COLUMBIA

FOREST SERVICE

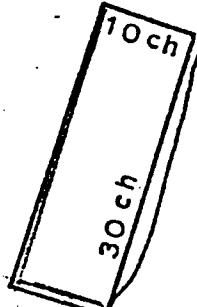
EXHIBIT A
Date...December 20, 1972
Atlas Ref...92J/SW/3W

shown Weldwood TFL No. 38 Acres± 30 R.D. 6 Scale 20 chains

T.S. 5

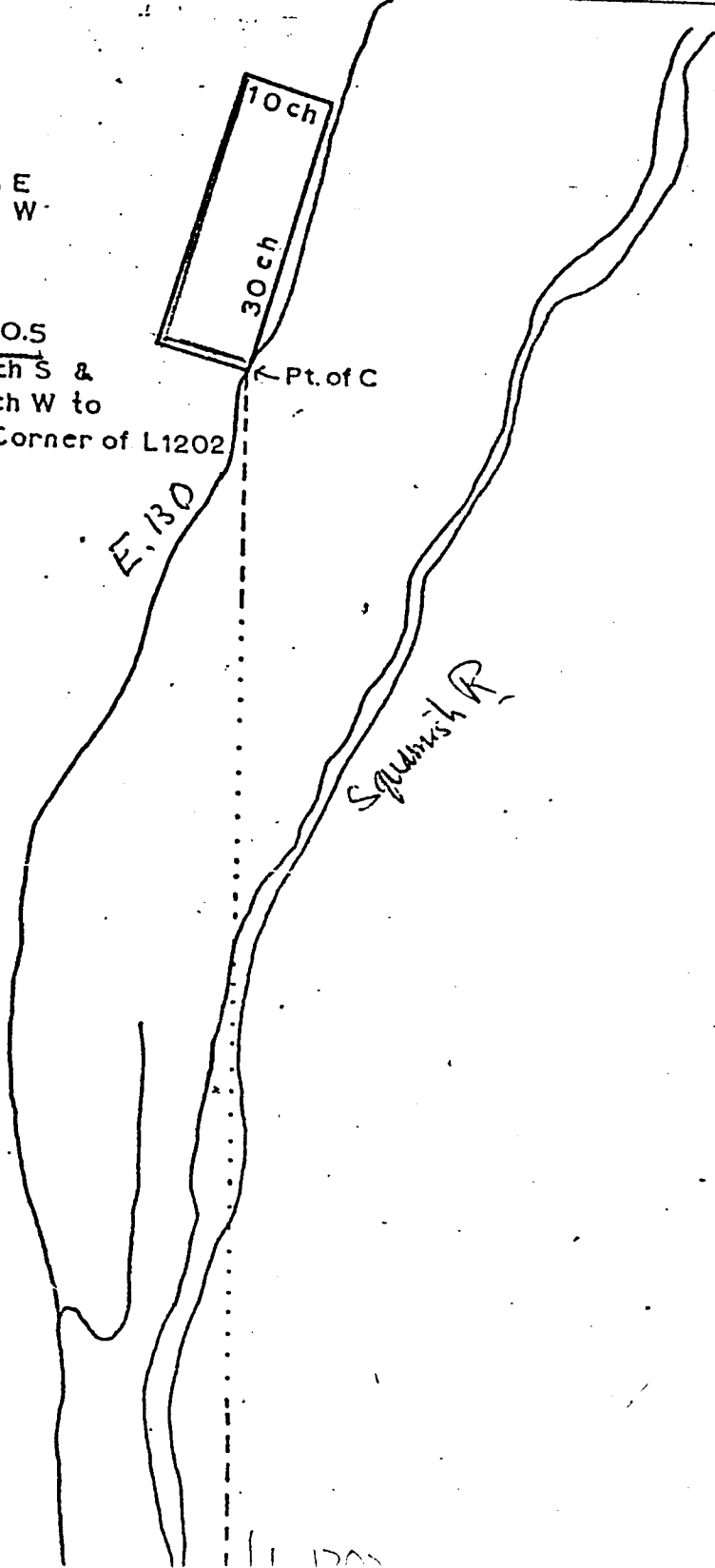
N 16 E
by S 74 W

TS EP NO. 5
144 ch S &
85 ch W to
NW Corner of L1202



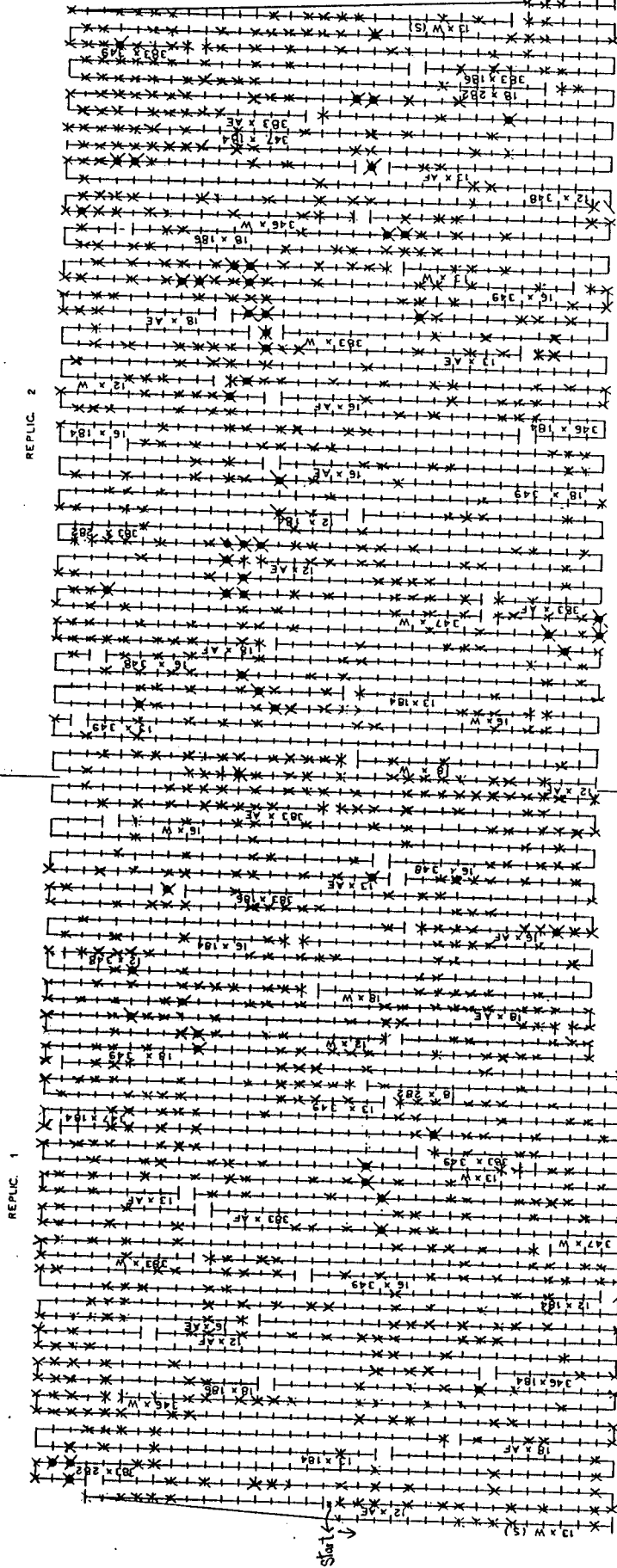
E. 130

Spanish R.



AREA 5, SQUAMISH RIVER 1

PLANTED MAY 12-19, 1967



x MORTALITY
x UNPLANTABLE
SPACING 10' x 10'

SQUAMISH

EP: 513
SPECIES: Douglas-fir

CONTACT PERSON: Jack Woods
PH.NUMBER: 749-6811

TEST SITE NAME: SQUAMISH RIVER
TEST SITE NUMBER: 26

LATITUDE: 50 06 30 LONGITUDE: 123 22 00

ELEV: ft: 498 m: 152

FOREST DISTRICT: Squamish

COMPANY (TENURE): Weldwood TFL #38

MAP SHEET (#, SCALE, YEAR, TYPE): 92J/3, 1:50,000, 1957, NTS
MAP SHEET (#, SCALE, YEAR, TYPE): 92J.004, 1:20,000, 1994, BCGS

UTM EAST: 473600 UTM NORTH: 5549400

AIR PHOTOS:
FLIGHT LINE: BC5103 NUMBERS: 134
SCALE: YEAR:
FLIGHT LINE: BC87098 NUMBERS: 088-089 (089)
SCALE: 70 chain YEAR: 1987

BGCZ:

PLANTING DATE: May 1971

TOTAL # OF TREES PLANTED: 3897 # OF CROSSES: 39

TYPE OF STOCK PLANTED: 1+1 transplants

SPACING: 10' x 10'

REPLICATIONS: 2

APPROXIMATE ST/HA: 885

APPROXIMATE HA: 3.64

MEASUREMENTS:

1973 height(cm)

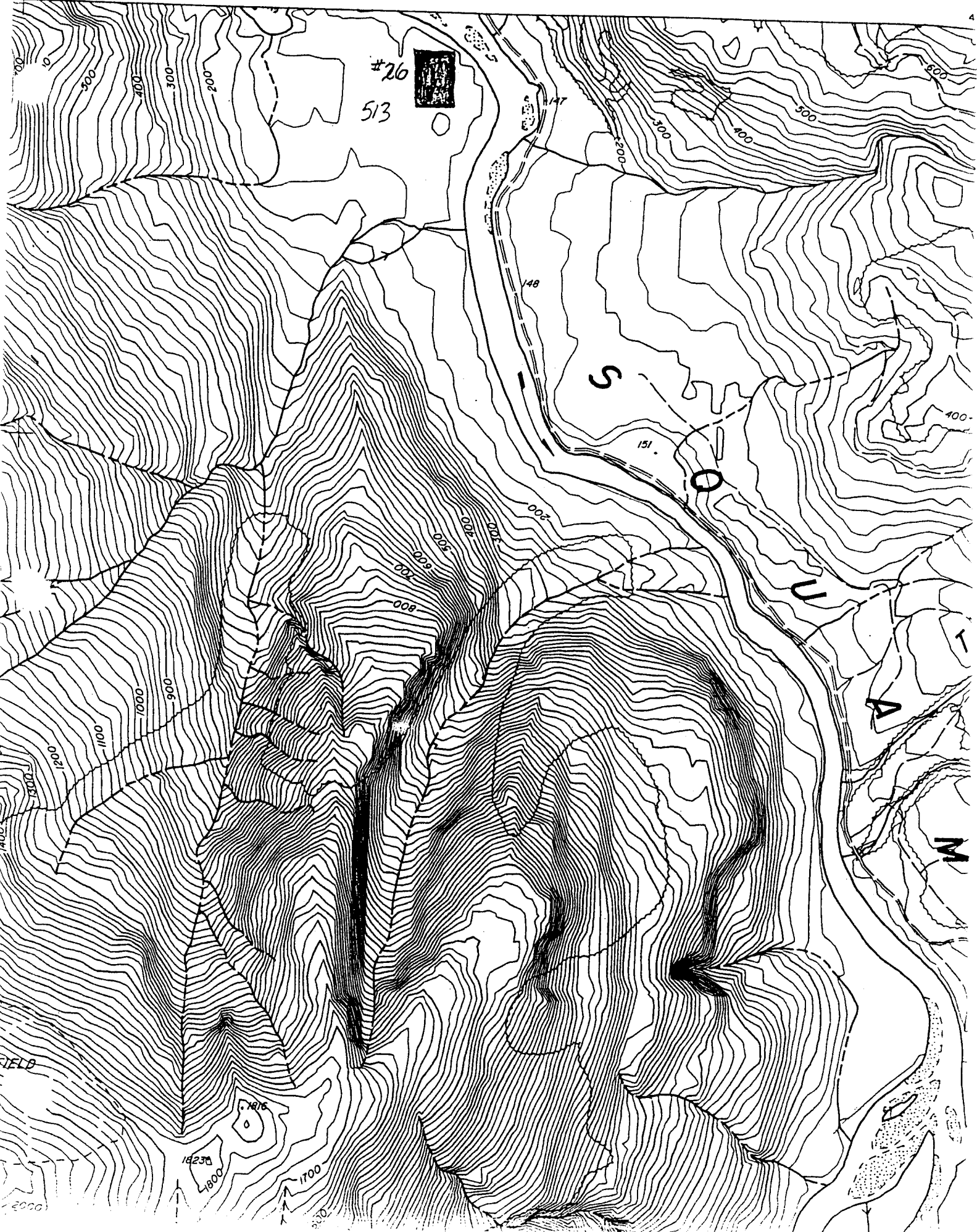
5yr

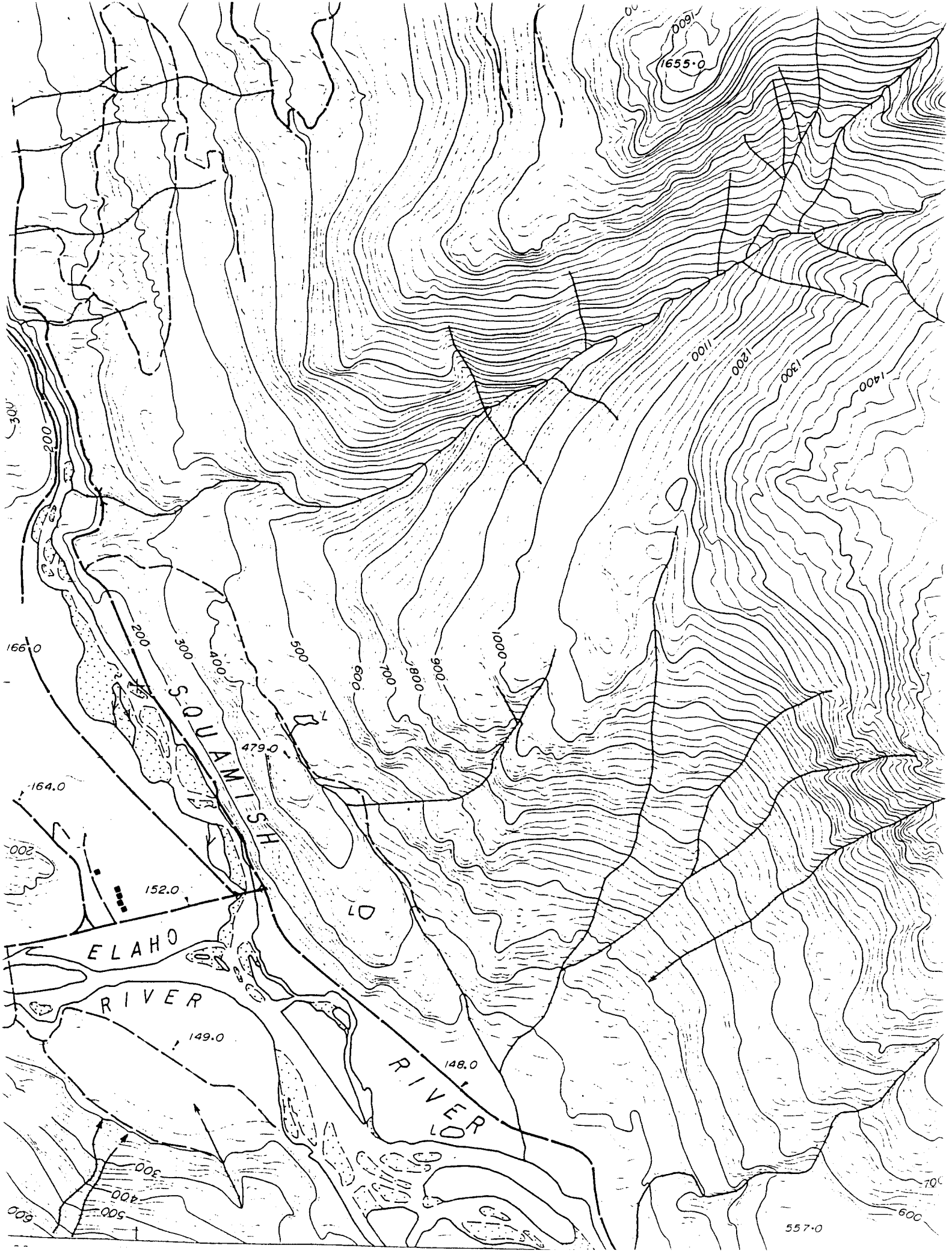
1979 height(cm) & diameter(mm)

11yr (dia 60cm from ground)

1985 diameter(mm)

17yr (dia 135cm or dbh)





Region No. _____ Compt. No. _____
Use Weldwood Working Map

BRITISH COLUMBIA

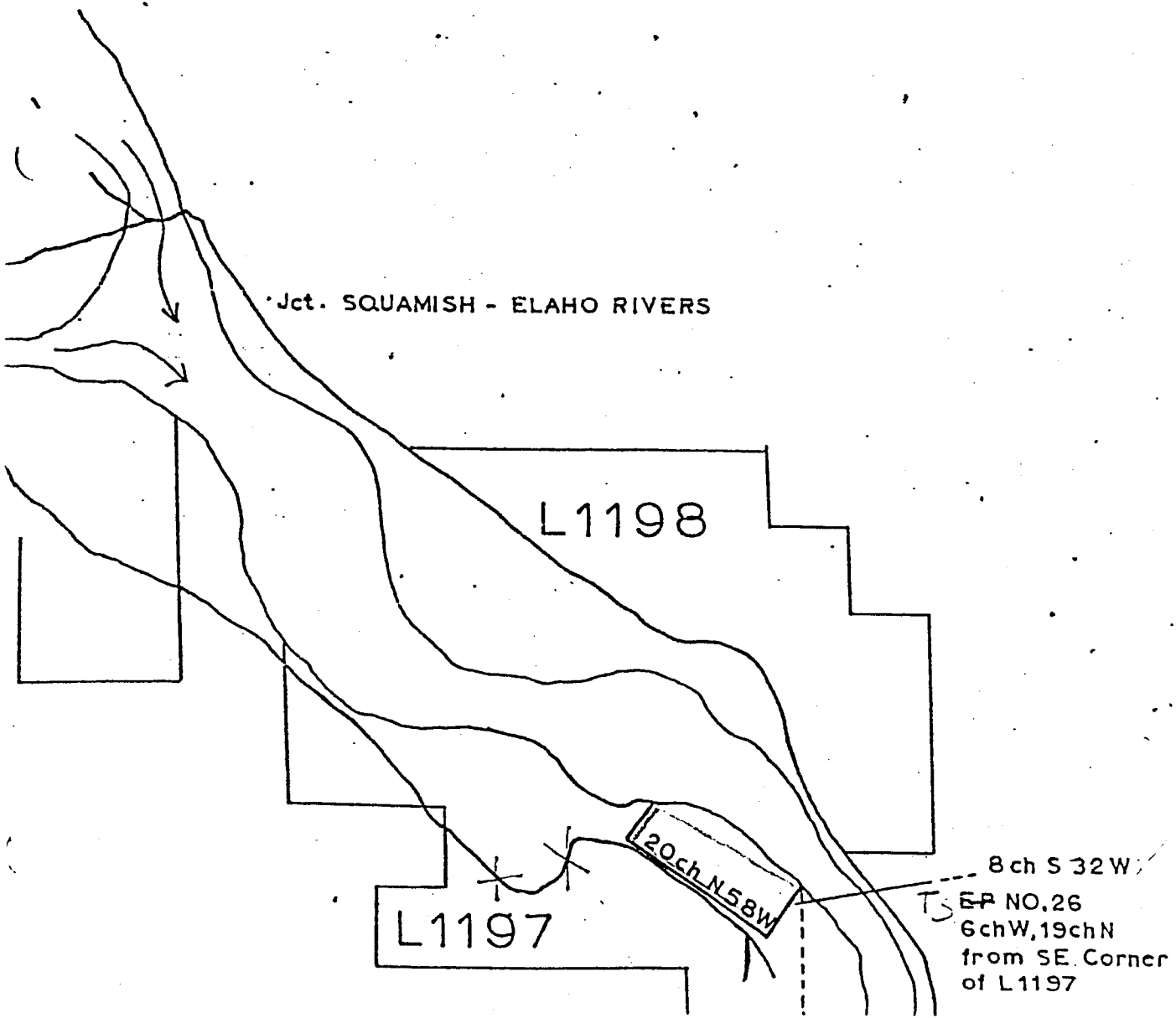


FOREST SERVICE

Date Jan. 11, 1973
Atlas Ref. 92J/SW/3W L. 1197

town L 1197 within TFL No. 32 Acres ± 16 R.D. 6 Scale 20 chains

26



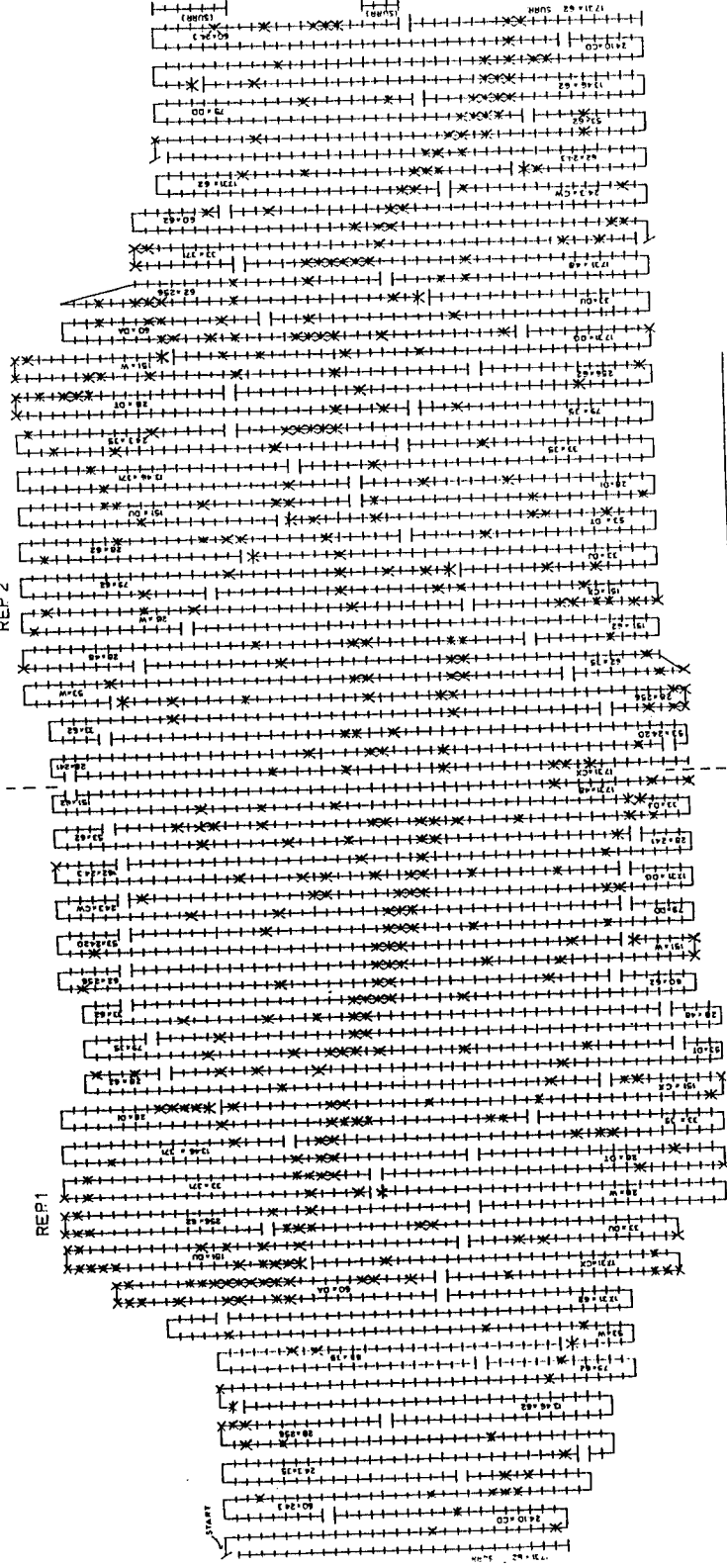
AREA 26 SQUAMISH

PLANTED MAY 3—6, 1971

1/2" = 10'

REP 2

REP 1



CROSS	REPI	2
24.3 x 35	49FO	
24.3 x CW	50	
28 x 256		
28 x DT		
28 x 241		
28 x 48		
28 x 62		
28 x W		
11.46 x 62		
79 x 42		
79 x 43		
62 x 24.3		
53 x 24.20		
53 x DT		
53 x W		
73 x 62		
73 x CX		
73 x DG		
73 x 48		
60 x 24.3		
60 x 62		
60 x DA		
60 x DV		
60 x W		
60 x 47		
60 x 45		
60 x 41		
256 x 62		
24.3 x CW		
27 x 62 (SUBR)		
20 x 34		

X MORTALITY
X UNPLANTED

SQUAMISH