

PROVINCE OF BRITISH COLUMBIA  
Department of Lands, Forests, and Water Resources  
FOREST SERVICE

---

IN THE MATTER OF TREE FARM LICENCE NUMBER 39  
AMENDMENT NUMBER 83

---

Whereas the lands described hereinafter are within Tree Farm Licence Number 39 and are found to be suitable for a higher economic use than the growing of forest crops;

And whereas the Licensee has requested the withdrawal of the aforementioned lands from Schedule "A" of the said Tree Farm Licence;

Therefore pursuant to Subsection (14) of Section 36 of the *Forest Act* being Chapter 153 of the Revised Statutes of British Columbia, 1960 and pursuant to Clause 14 of the said Tree Farm Licence Number 39, the Licensor hereby consents to the withdrawal from Schedule "A" of the said Tree Farm Licence of the following lands;

- (1) Lot 1 of Section 13, Township 2 and Section 18, Township 1, Rupert District, Plan 23085.
- (2) Lot 1 of Section 25, Rupert District, Plan 23094.

shown outlined in bold black on the sketch attached hereto and the lands so withdrawn are and shall be henceforth no longer part of or subject to the said Tree Farm Licence Number 39.

Dated at the City of Victoria in the Province of British Columbia  
this . . . 24<sup>th</sup> . . . day of . . . March . . . , 1970.

*Document notated*

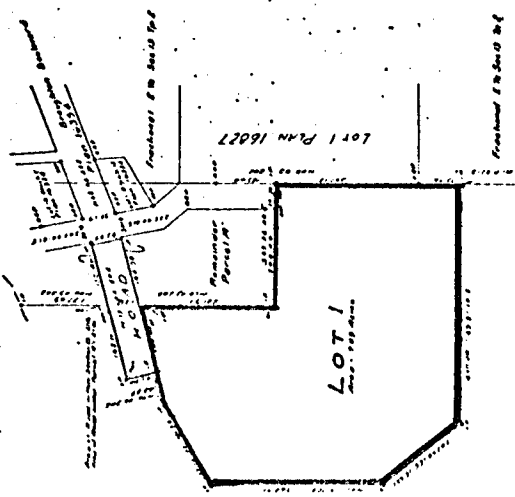
"Ray Williston"  
Minister of Lands, Forests, and Water Resources



# Amendment #83 to T.F.L.39

PLAN OF SUBDIVISION OF PART OF PARCEL A  
SECTION 25, AND PART OF SECTION 25,  
RUPERT DISTRICT.

LEGEND  
 1. 1st Plan 16352  
 2. 2nd Plan 16352  
 3. 3rd Plan 16352  
 4. 4th Plan 16352  
 5. 5th Plan 16352  
 6. 6th Plan 16352  
 7. 7th Plan 16352  
 8. 8th Plan 16352  
 9. 9th Plan 16352  
 10. 10th Plan 16352  
 11. 11th Plan 16352  
 12. 12th Plan 16352  
 13. 13th Plan 16352  
 14. 14th Plan 16352  
 15. 15th Plan 16352  
 16. 16th Plan 16352  
 17. 17th Plan 16352  
 18. 18th Plan 16352  
 19. 19th Plan 16352  
 20. 20th Plan 16352  
 21. 21st Plan 16352  
 22. 22nd Plan 16352  
 23. 23rd Plan 16352  
 24. 24th Plan 16352  
 25. 25th Plan 16352  
 26. 26th Plan 16352  
 27. 27th Plan 16352  
 28. 28th Plan 16352  
 29. 29th Plan 16352  
 30. 30th Plan 16352  
 31. 31st Plan 16352  
 32. 32nd Plan 16352  
 33. 33rd Plan 16352  
 34. 34th Plan 16352  
 35. 35th Plan 16352  
 36. 36th Plan 16352  
 37. 37th Plan 16352  
 38. 38th Plan 16352  
 39. 39th Plan 16352  
 40. 40th Plan 16352  
 41. 41st Plan 16352  
 42. 42nd Plan 16352  
 43. 43rd Plan 16352  
 44. 44th Plan 16352  
 45. 45th Plan 16352  
 46. 46th Plan 16352  
 47. 47th Plan 16352  
 48. 48th Plan 16352  
 49. 49th Plan 16352  
 50. 50th Plan 16352  
 51. 51st Plan 16352  
 52. 52nd Plan 16352  
 53. 53rd Plan 16352  
 54. 54th Plan 16352  
 55. 55th Plan 16352  
 56. 56th Plan 16352  
 57. 57th Plan 16352  
 58. 58th Plan 16352  
 59. 59th Plan 16352  
 60. 60th Plan 16352  
 61. 61st Plan 16352  
 62. 62nd Plan 16352  
 63. 63rd Plan 16352  
 64. 64th Plan 16352  
 65. 65th Plan 16352  
 66. 66th Plan 16352  
 67. 67th Plan 16352  
 68. 68th Plan 16352  
 69. 69th Plan 16352  
 70. 70th Plan 16352  
 71. 71st Plan 16352  
 72. 72nd Plan 16352  
 73. 73rd Plan 16352  
 74. 74th Plan 16352  
 75. 75th Plan 16352  
 76. 76th Plan 16352  
 77. 77th Plan 16352  
 78. 78th Plan 16352  
 79. 79th Plan 16352  
 80. 80th Plan 16352  
 81. 81st Plan 16352  
 82. 82nd Plan 16352  
 83. 83rd Plan 16352  
 84. 84th Plan 16352  
 85. 85th Plan 16352  
 86. 86th Plan 16352  
 87. 87th Plan 16352  
 88. 88th Plan 16352  
 89. 89th Plan 16352  
 90. 90th Plan 16352  
 91. 91st Plan 16352  
 92. 92nd Plan 16352  
 93. 93rd Plan 16352  
 94. 94th Plan 16352  
 95. 95th Plan 16352  
 96. 96th Plan 16352  
 97. 97th Plan 16352  
 98. 98th Plan 16352  
 99. 99th Plan 16352  
 100. 100th Plan 16352



PLANNED  
 SECTION 25  
 RUPERT DISTRICT  
 PLAN 16352  
 1st PLAN 16352  
 2nd PLAN 16352  
 3rd PLAN 16352  
 4th PLAN 16352  
 5th PLAN 16352  
 6th PLAN 16352  
 7th PLAN 16352  
 8th PLAN 16352  
 9th PLAN 16352  
 10th PLAN 16352  
 11th PLAN 16352  
 12th PLAN 16352  
 13th PLAN 16352  
 14th PLAN 16352  
 15th PLAN 16352  
 16th PLAN 16352  
 17th PLAN 16352  
 18th PLAN 16352  
 19th PLAN 16352  
 20th PLAN 16352  
 21st PLAN 16352  
 22nd PLAN 16352  
 23rd PLAN 16352  
 24th PLAN 16352  
 25th PLAN 16352  
 26th PLAN 16352  
 27th PLAN 16352  
 28th PLAN 16352  
 29th PLAN 16352  
 30th PLAN 16352  
 31st PLAN 16352  
 32nd PLAN 16352  
 33rd PLAN 16352  
 34th PLAN 16352  
 35th PLAN 16352  
 36th PLAN 16352  
 37th PLAN 16352  
 38th PLAN 16352  
 39th PLAN 16352  
 40th PLAN 16352  
 41st PLAN 16352  
 42nd PLAN 16352  
 43rd PLAN 16352  
 44th PLAN 16352  
 45th PLAN 16352  
 46th PLAN 16352  
 47th PLAN 16352  
 48th PLAN 16352  
 49th PLAN 16352  
 50th PLAN 16352  
 51st PLAN 16352  
 52nd PLAN 16352  
 53rd PLAN 16352  
 54th PLAN 16352  
 55th PLAN 16352  
 56th PLAN 16352  
 57th PLAN 16352  
 58th PLAN 16352  
 59th PLAN 16352  
 60th PLAN 16352  
 61st PLAN 16352  
 62nd PLAN 16352  
 63rd PLAN 16352  
 64th PLAN 16352  
 65th PLAN 16352  
 66th PLAN 16352  
 67th PLAN 16352  
 68th PLAN 16352  
 69th PLAN 16352  
 70th PLAN 16352  
 71st PLAN 16352  
 72nd PLAN 16352  
 73rd PLAN 16352  
 74th PLAN 16352  
 75th PLAN 16352  
 76th PLAN 16352  
 77th PLAN 16352  
 78th PLAN 16352  
 79th PLAN 16352  
 80th PLAN 16352  
 81st PLAN 16352  
 82nd PLAN 16352  
 83rd PLAN 16352  
 84th PLAN 16352  
 85th PLAN 16352  
 86th PLAN 16352  
 87th PLAN 16352  
 88th PLAN 16352  
 89th PLAN 16352  
 90th PLAN 16352  
 91st PLAN 16352  
 92nd PLAN 16352  
 93rd PLAN 16352  
 94th PLAN 16352  
 95th PLAN 16352  
 96th PLAN 16352  
 97th PLAN 16352  
 98th PLAN 16352  
 99th PLAN 16352  
 100th PLAN 16352