

COPY

PROVINCE OF BRITISH COLUMBIA  
Department of Lands, Forests, and Water Resources  
FOREST SERVICE

---

IN THE MATTER OF TREE FARM LICENCE NUMBER 23  
AMENDMENT NUMBER 84

---

Whereas the lands described hereinafter are within Tree Farm Licence Number 23 and are found to be required for a higher economic use than the growing of forest crops;

And whereas the withdrawal of the aforementioned lands together with any lands previously withdrawn does not diminish the productive capacity of the licence area to the extent provided in Clause 10 of the Tree Farm Licence;

Therefore pursuant to Subsection (14) of Section 36 of the Forest Act being Chapter 153 of the Revised Statutes of British Columbia 1960 and pursuant to Clause 10 of the said Tree Farm Licence Number 23 the following lands are hereby withdrawn from the lands described in Schedule "B" of the said Tree Farm Licence that is to say all those lands situated within Kootenay Land District being more particularly shown in black on the attached maps which are below the elevation of 1,448 feet above sea level excepting thereout any alienated areas not held by the Licensee and described as follows:

1. The West shore of Arrow Lakes (Shelter Bay South)
  - A. Between the South boundary Lot 811 and the North boundary of Lot 860, containing approximately 110 acres.
  - B. Between the South boundary of Lot 860 and Lot 4576, containing approximately 141 acres.
  - C. Between the South boundary of Lot 7676 and the North boundary of Lot 10591, containing approximately 137 acres.
  - D. Between the South boundary of Lot 10591 and Lot 12325, containing approximately 22 acres.
  - E. Between the South boundary of Lot 12325 and the North boundary of Lot 8033, containing approximately 192 acres.

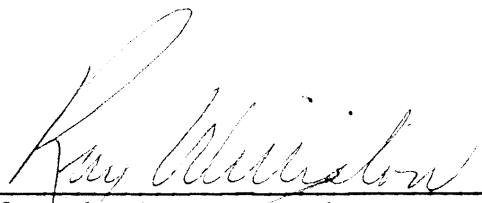
2. The East shore of Arrow Lakes (Galena Bay, South)

- F. Between Lot 12459 and the North boundary of Lot 100, containing approximately 106 acres.
- G. Between the South boundary of Lot 11005 and the North boundary of Lot 5069, containing approximately 89 acres.
- H. Between the South boundary of Lot 1139 and the North boundary of Lot 8408, containing approximately 255 acres.
- I. Between the South boundary of Lot 8130 and the North boundary of Lot 863, containing approximately 73 acres.
- J. Between the South boundary of Lot 7630 and the North boundary of Lot 8688, containing approximately 54 acres.
- K. Between the South boundary of Lot 8688 and the North boundary of Lot 7631, containing approximately 54 acres.
- L. Between the South boundary of Lot 7631 and the North boundary of Lot 8809, containing approximately 89 acres.
- M. Part of Lot 10029, containing approximately 14 acres.
- N. Between the Southeast corner of Lot 400 and the Northwest corner of Lot 8070.
- Between the Southeast corner of Lot 8070 and the Northwest corner of Lot 9249.
- Between the Southeast corner of Lot 9249 and the West boundary of Lot 9068, containing approximately 147 acres inclusive.

and the said lands so withdrawn are and shall be henceforth no longer subject to or form any part of the said Tree Farm Licence Number 23.

Dated at the City of Victoria in the Province of British Columbia this . 10<sup>th</sup> . . . . . day of . . . . . DECEMBER . . . . . , 1968.

*amended by AMND 99*  
*changed to*  
*between "Lot 9249"*  
*by AMND 99*

  
 \_\_\_\_\_  
 Minister of Lands, Forests, and Water Resources

TREE FARM LICENCE 23  
AMENDMENT #84

Sketch #1

Ref Map 82K/N.W. & S.W.

Scale: 2 Miles = 1 Inch

2-12-68

21

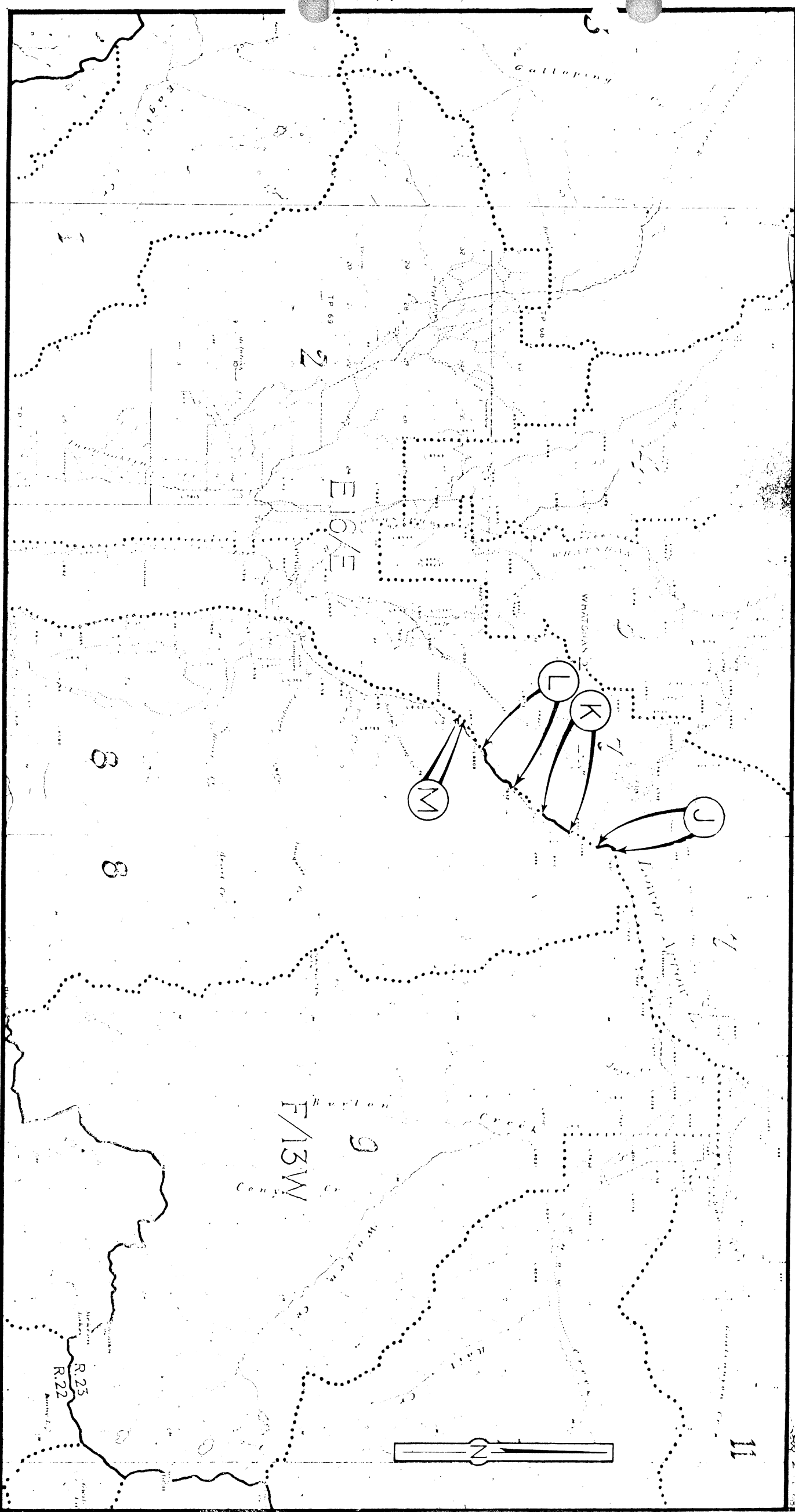


TREE FARM LICENCE 23  
AMENDMENT #84

Ref Map 82E NE(1-6)

Scale 2 Miles = 1 Inch

Sketch #2

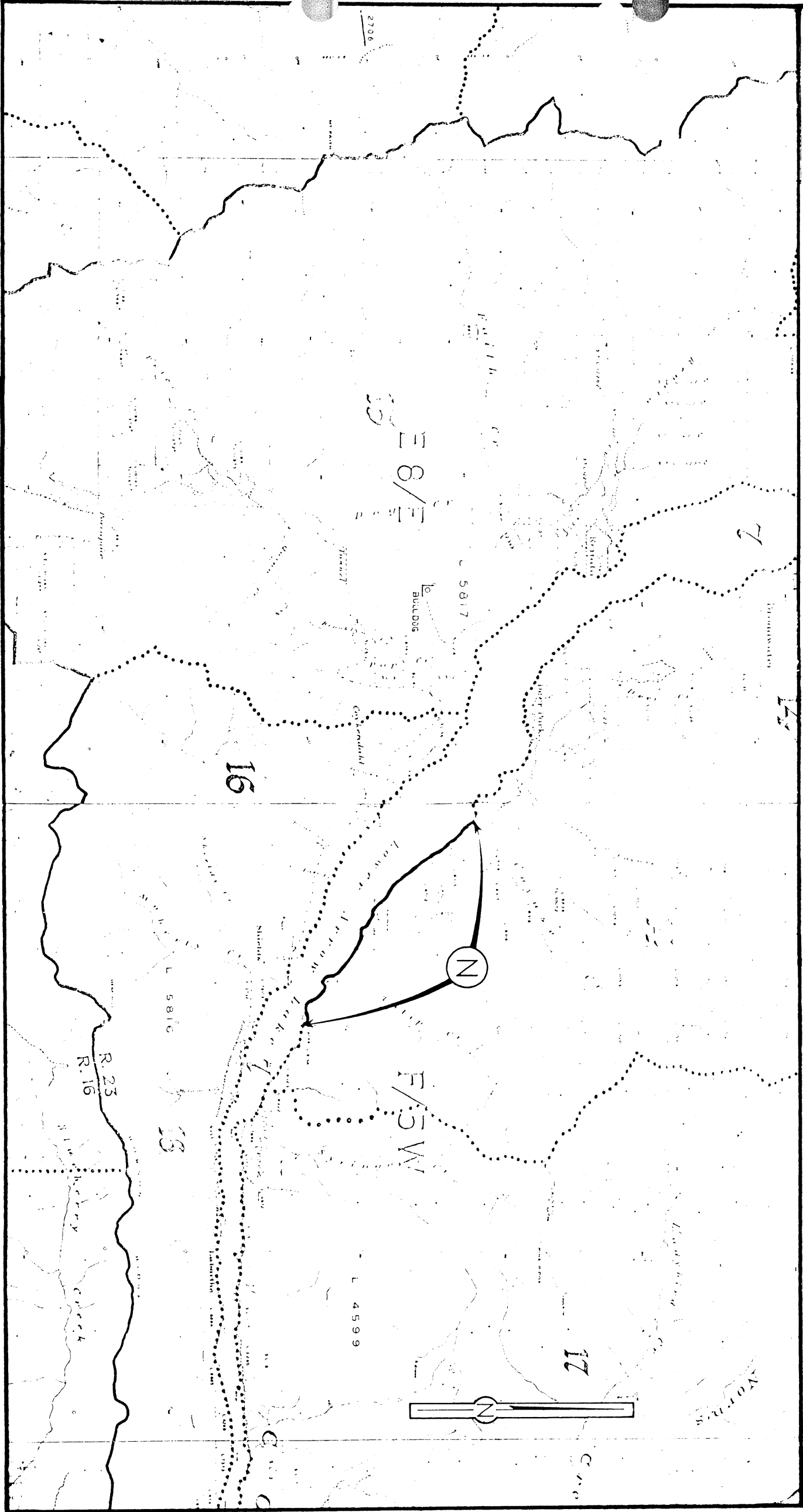


# TREE FARM LICENCE 23 AMENDMENT #84

Ref Map 82F/SW(e-1)

Scale: 2 Miles = 1 Inch

6-2-68



# TREE FARM LICENCE 23 AMENDMENT #84

Sketch #1

Ref Map 82K/NW & SW

Scale: 2 Miles = 1 Inch

2-12-68

21

25

16

K12/W

15



A

13

F

12

Balwyn  
Hot Springs

Haltway

24

14

B

11

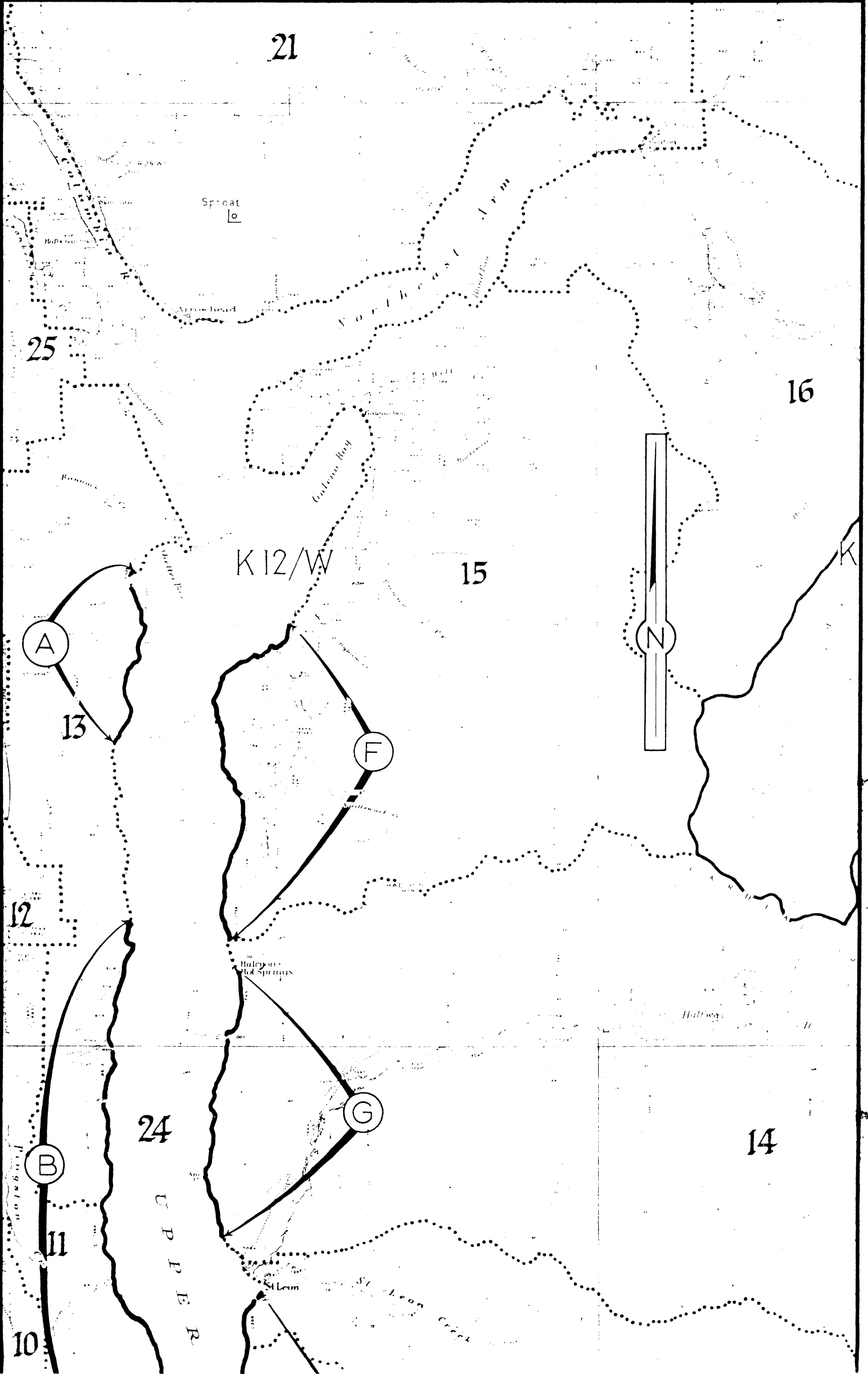
U P P E R

10

St Leon

G

St Leon  
Creek



A R R O W

K 5 / W

L A K E

5

9

C

H

I

D

NAKUSH

7

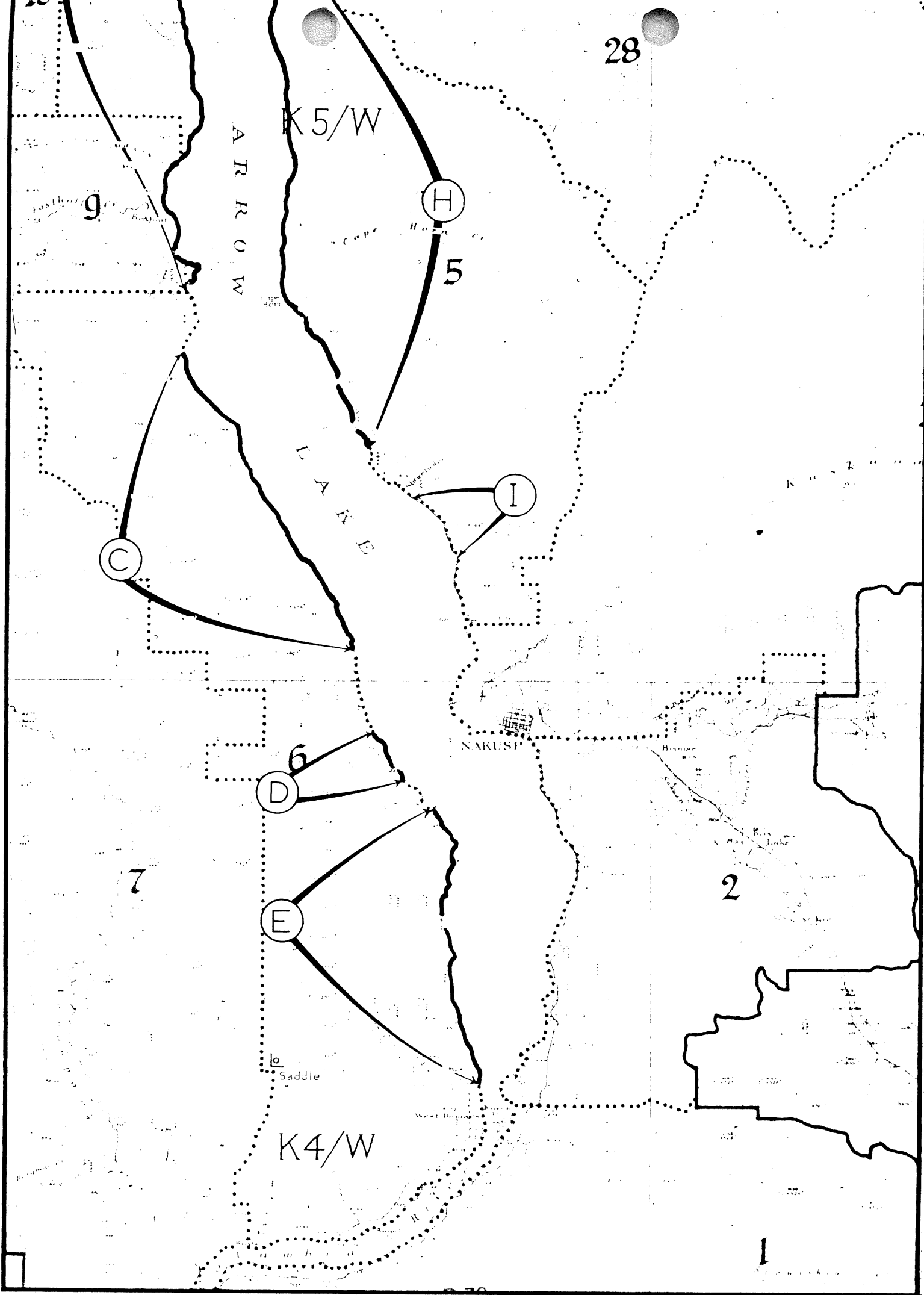
E

2

Saddle

K 4 / W

1




MEI )

TO THE HONOURABLE THE MINISTER

Your signature is recommended on the attached  
Amendment Number 84 to Tree Farm Licence Number 23 -  
Celgar Limited.

This amendment provides for the removal of Schedule 'B'  
lands to be flooded by the B.C. Hydro & Power Authority  
Arrow Lakes Project.

  
L. F. Sw  
Chief For