

**PROVINCE OF BRITISH COLUMBIA**

**Ministry of Forests**

---

**IN THE MATTER OF TREE FARM LICENCE 6**

**INSTRUMENT NUMBER 79**

**Amendment**

---

THIS AGREEMENT is dated the 31 day of December, 1998.

**BETWEEN:** THE MINISTER OF FORESTS, on behalf of HER MAJESTY THE QUEEN IN RIGHT OF THE PROVINCE OF BRITISH COLUMBIA, Parliament Buildings, Victoria, British Columbia, V8V 1X4.

(the "Licensor")

**AND:** WESTERN FOREST PRODUCTS LIMITED  
2300 - 1111 West Georgia Street  
Vancouver, British Columbia  
V6E 4M3

(the "Licensee")

**WHEREAS:**

The parcel of land described hereinafter lies within Tree Farm Licence (TFL) 6, and is required for the expansion of the Quatsino Band Indian Reserve in order to improve housing condition on the said reserve.

**AND WHEREAS:**

- A. The Licensee consented to the withdrawal of approximately 14.8 hectares, more or less, of TFL 6 for the expansion of the Quatsino Band Indian Reserve.
- B. The area intended for deletion was formerly part of Schedule "A" land of TFL 6 and described as Block 2 and 6 of Timber Licence T0475.

- C. The area was eliminated from the Timber Licence T0475 and reverted to Schedule "B" land as per Section 1.18 of the TFL 6 agreement.
- D. The parcel of land is now known as Block A of District Lots 821 and 198, Rupert Land District.

**THEREFORE:**

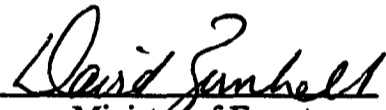
Pursuant to Section 39(1)(e) of the *Forest Act*, the parcel of land known as Block A of District Lots 821 and 198, Rupert Land District as more particularly shown outlined in bold black on the attached map is deleted from Schedule "B" of TFL 6.

**AND:**

The said parcel of land so withdrawn is and shall be henceforth no longer part of or subject to the TFL 6.

This Agreement has been executed by the Licensor and Licensee on the day and year first written above.

SIGNED, SEALED AND DELIVERED )  
 by the Minister of Forests on behalf of )  
 Her Majesty the Queen in Right of the )  
 Province of British Columbia in the )  
 presence of: )  
 \_\_\_\_\_ )  
 \_\_\_\_\_ )  
 \_\_\_\_\_ )

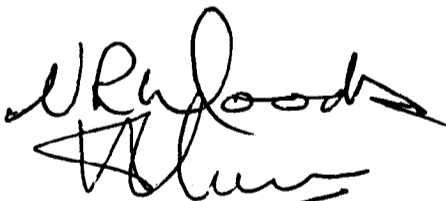
  
 Minister of Forests

THE COMMON SEAL C/S of the )  
 Licensee was affixed in the presence of: )  
 \_\_\_\_\_ )  
 Authorized Signatory )  
 \_\_\_\_\_ )  
 Authorized Signatory )

C/S

(or)

SIGNED, SEALED AND DELIVERED )  
 by the Licensee in the presence of: )  
 \_\_\_\_\_ )  
 \_\_\_\_\_ )  
 \_\_\_\_\_ )

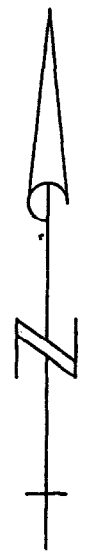
  
 Authorized Signatory

Title

21  
19  
17  
15  
13  
11  
9  
7  
5  
3  
1  
0

THIS COPY APPROVED  
BY THE  
MAYOR OF VICTORIA  
ON THIS 14th DAY OF MARCH 1955

7  
5  
3  
1  
0



**Traverse and Tie Table**

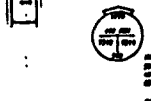
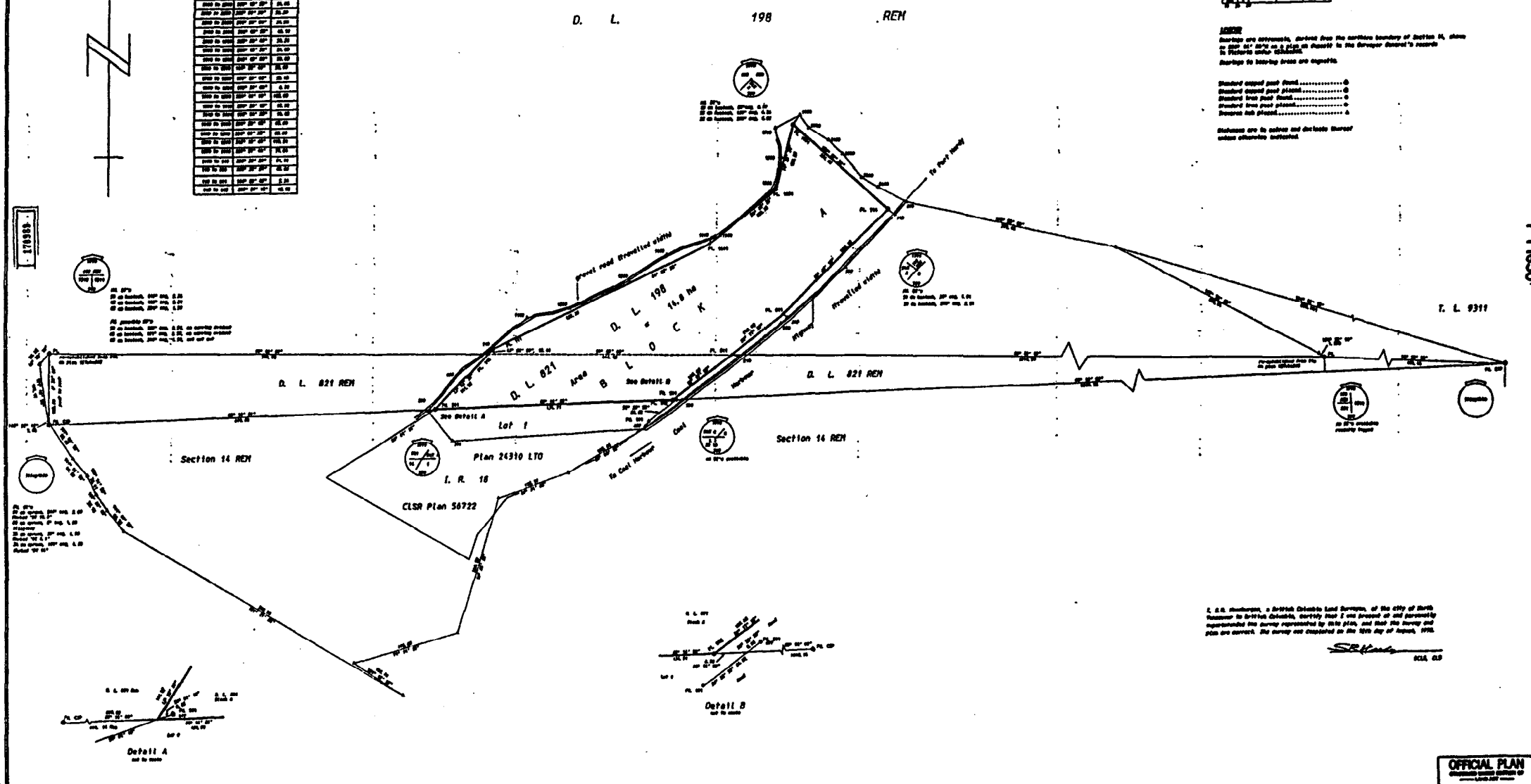
Course	Bearing	Dist.
100 to 101	S 72° 12' 30" E	15.00
101 to 102	S 72° 12' 30" E	15.00
102 to 103	S 72° 12' 30" E	15.00
103 to 104	S 72° 12' 30" E	15.00
104 to 105	S 72° 12' 30" E	15.00
105 to 106	S 72° 12' 30" E	15.00
106 to 107	S 72° 12' 30" E	15.00
107 to 108	S 72° 12' 30" E	15.00
108 to 109	S 72° 12' 30" E	15.00
109 to 110	S 72° 12' 30" E	15.00
110 to 111	S 72° 12' 30" E	15.00
111 to 112	S 72° 12' 30" E	15.00
112 to 113	S 72° 12' 30" E	15.00
113 to 114	S 72° 12' 30" E	15.00
114 to 115	S 72° 12' 30" E	15.00
115 to 116	S 72° 12' 30" E	15.00
116 to 117	S 72° 12' 30" E	15.00
117 to 118	S 72° 12' 30" E	15.00
118 to 119	S 72° 12' 30" E	15.00
119 to 120	S 72° 12' 30" E	15.00
120 to 121	S 72° 12' 30" E	15.00
121 to 122	S 72° 12' 30" E	15.00
122 to 123	S 72° 12' 30" E	15.00
123 to 124	S 72° 12' 30" E	15.00
124 to 125	S 72° 12' 30" E	15.00
125 to 126	S 72° 12' 30" E	15.00
126 to 127	S 72° 12' 30" E	15.00
127 to 128	S 72° 12' 30" E	15.00
128 to 129	S 72° 12' 30" E	15.00
129 to 130	S 72° 12' 30" E	15.00
130 to 131	S 72° 12' 30" E	15.00
131 to 132	S 72° 12' 30" E	15.00
132 to 133	S 72° 12' 30" E	15.00
133 to 134	S 72° 12' 30" E	15.00
134 to 135	S 72° 12' 30" E	15.00
135 to 136	S 72° 12' 30" E	15.00
136 to 137	S 72° 12' 30" E	15.00
137 to 138	S 72° 12' 30" E	15.00
138 to 139	S 72° 12' 30" E	15.00
139 to 140	S 72° 12' 30" E	15.00
140 to 141	S 72° 12' 30" E	15.00
141 to 142	S 72° 12' 30" E	15.00
142 to 143	S 72° 12' 30" E	15.00
143 to 144	S 72° 12' 30" E	15.00
144 to 145	S 72° 12' 30" E	15.00
145 to 146	S 72° 12' 30" E	15.00
146 to 147	S 72° 12' 30" E	15.00
147 to 148	S 72° 12' 30" E	15.00
148 to 149	S 72° 12' 30" E	15.00
149 to 150	S 72° 12' 30" E	15.00
150 to 151	S 72° 12' 30" E	15.00
151 to 152	S 72° 12' 30" E	15.00
152 to 153	S 72° 12' 30" E	15.00
153 to 154	S 72° 12' 30" E	15.00
154 to 155	S 72° 12' 30" E	15.00
155 to 156	S 72° 12' 30" E	15.00
156 to 157	S 72° 12' 30" E	15.00
157 to 158	S 72° 12' 30" E	15.00
158 to 159	S 72° 12' 30" E	15.00
159 to 160	S 72° 12' 30" E	15.00
160 to 161	S 72° 12' 30" E	15.00
161 to 162	S 72° 12' 30" E	15.00
162 to 163	S 72° 12' 30" E	15.00
163 to 164	S 72° 12' 30" E	15.00
164 to 165	S 72° 12' 30" E	15.00
165 to 166	S 72° 12' 30" E	15.00
166 to 167	S 72° 12' 30" E	15.00
167 to 168	S 72° 12' 30" E	15.00
168 to 169	S 72° 12' 30" E	15.00
169 to 170	S 72° 12' 30" E	15.00
170 to 171	S 72° 12' 30" E	15.00
171 to 172	S 72° 12' 30" E	15.00
172 to 173	S 72° 12' 30" E	15.00
173 to 174	S 72° 12' 30" E	15.00
174 to 175	S 72° 12' 30" E	15.00
175 to 176	S 72° 12' 30" E	15.00
176 to 177	S 72° 12' 30" E	15.00
177 to 178	S 72° 12' 30" E	15.00
178 to 179	S 72° 12' 30" E	15.00
179 to 180	S 72° 12' 30" E	15.00
180 to 181	S 72° 12' 30" E	15.00
181 to 182	S 72° 12' 30" E	15.00
182 to 183	S 72° 12' 30" E	15.00
183 to 184	S 72° 12' 30" E	15.00
184 to 185	S 72° 12' 30" E	15.00
185 to 186	S 72° 12' 30" E	15.00
186 to 187	S 72° 12' 30" E	15.00
187 to 188	S 72° 12' 30" E	15.00
188 to 189	S 72° 12' 30" E	15.00
189 to 190	S 72° 12' 30" E	15.00
190 to 191	S 72° 12' 30" E	15.00
191 to 192	S 72° 12' 30" E	15.00
192 to 193	S 72° 12' 30" E	15.00
193 to 194	S 72° 12' 30" E	15.00
194 to 195	S 72° 12' 30" E	15.00
195 to 196	S 72° 12' 30" E	15.00
196 to 197	S 72° 12' 30" E	15.00
197 to 198	S 72° 12' 30" E	15.00
198 to 199	S 72° 12' 30" E	15.00
199 to 200	S 72° 12' 30" E	15.00
200 to 201	S 72° 12' 30" E	15.00
201 to 202	S 72° 12' 30" E	15.00
202 to 203	S 72° 12' 30" E	15.00
203 to 204	S 72° 12' 30" E	15.00
204 to 205	S 72° 12' 30" E	15.00
205 to 206	S 72° 12' 30" E	15.00
206 to 207	S 72° 12' 30" E	15.00
207 to 208	S 72° 12' 30" E	15.00
208 to 209	S 72° 12' 30" E	15.00
209 to 210	S 72° 12' 30" E	15.00
210 to 211	S 72° 12' 30" E	15.00
211 to 212	S 72° 12' 30" E	15.00
212 to 213	S 72° 12' 30" E	15.00
213 to 214	S 72° 12' 30" E	15.00
214 to 215	S 72° 12' 30" E	15.00
215 to 216	S 72° 12' 30" E	15.00
216 to 217	S 72° 12' 30" E	15.00
217 to 218	S 72° 12' 30" E	15.00
218 to 219	S 72° 12' 30" E	15.00
219 to 220	S 72° 12' 30" E	15.00

**SURVEY PLAN OF BLOCK A OF DISTRICT LOTS 821 AND 198 RUPERT DISTRICT**

B. C. S. 92L. 063



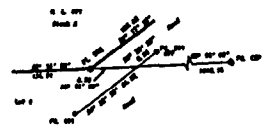
Notes:  
 Bearings are azimuths, defined from the northern boundary of Section 14, shown on map 107 (107) as a plan on sheets in the Registrar General's records in Victoria under 124318-18.  
 Bearings to bearing areas are azimuths.  
 Standard copper post fixed.....  
 Standard steel post fixed.....  
 Standard iron post fixed.....  
 Standard lead post fixed.....  
 Standard iron pipe fixed.....  
 Standard iron rod fixed.....  
 Standard iron stake fixed.....  
 Bearings are to center and distance thereof unless otherwise indicated.



See also map 107 (107) as a plan on sheets in the Registrar General's records in Victoria under 124318-18.

See also map 107 (107) as a plan on sheets in the Registrar General's records in Victoria under 124318-18.

See also map 107 (107) as a plan on sheets in the Registrar General's records in Victoria under 124318-18.



I, J. H. Macdonald, a British Columbia Land Surveyor, of the city of Seattle, Washington, in British Columbia, certify that I am a person of old standing and reputation and that the survey represented by this plan, and that the bearings and distances are correct. The survey was completed on the 14th day of March, 1955.

*J. H. Macdonald*  
 J. H. Macdonald

**OFFICIAL PLAN**  
 REGISTRY OF LANDS  
 VICTORIA  
 100-10

7 T. 1630