

Minister of Forests

ORDER # 3(4) 23-3

(Order made under section 3 of the *Forestry Revitalization Act*, S.B.C. 2003, c.17)

I, the Honourable Michael de Jong, Minister of Forests, hereby order that

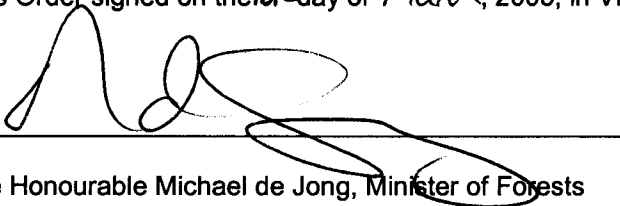
Definitions

1. In this Order,
 - a. "Act" means the *Forestry Revitalization Act*, and
 - b. words and phrases have the same meaning as in the Act.

Tree farm licences

2. For the purposes of section 3 (4)(b) of the Act the area of Crown land deleted from Tree Farm Licence 47 after the reduction in its allowable annual cut of 33 207 m³ made under Minister's Order 3(2) 23-1 dated December 21, 2004, is outlined in bold black on the maps that are attached as Schedules 1, 2, 3 and 4.

This Order signed on the ~~16th~~ day of *March*, 2005, in Victoria, by:



The Honourable Michael de Jong, Minister of Forests

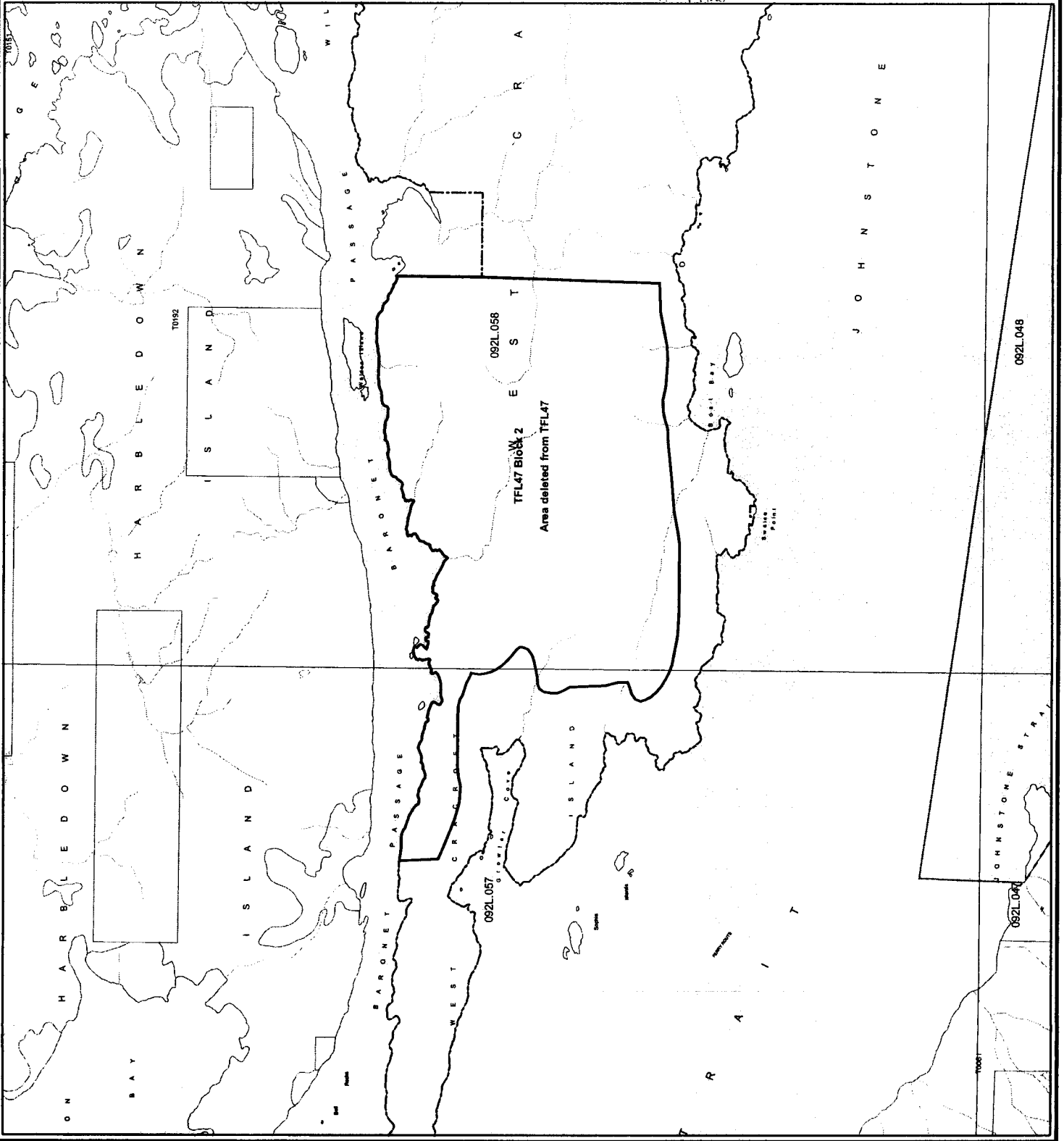


SCHEDULE 1
[ORDER 3(4) 23 -3]

Deletion from TFL 47
Area: 1030 Hectares ±

FOREST REGION: Coast
 DISTRICT: North Island - Central Coast
 LAND DISTRICT: Range 1 Coast
 SHOWN AS A: BOLD SOLID LINE
 PROJECTION: ALBERS
 UNITS: METERS
 DATUM: NAD 83
 SPHEROID: GRS1980
 DRAWN BY: NATHAN ENGE
 REVISED BY: NATHAN ENGE

□ Area Deleted from TFL 47




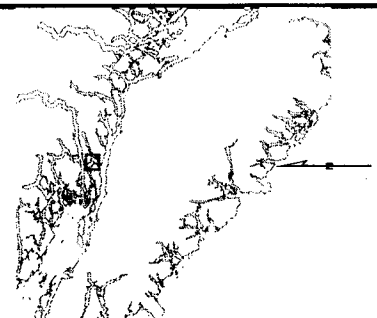


SCHEDULE 2
[ORDER 3(4) 23 - 3]

Deletion from TFL 47
Area: 2336 Hectares ±

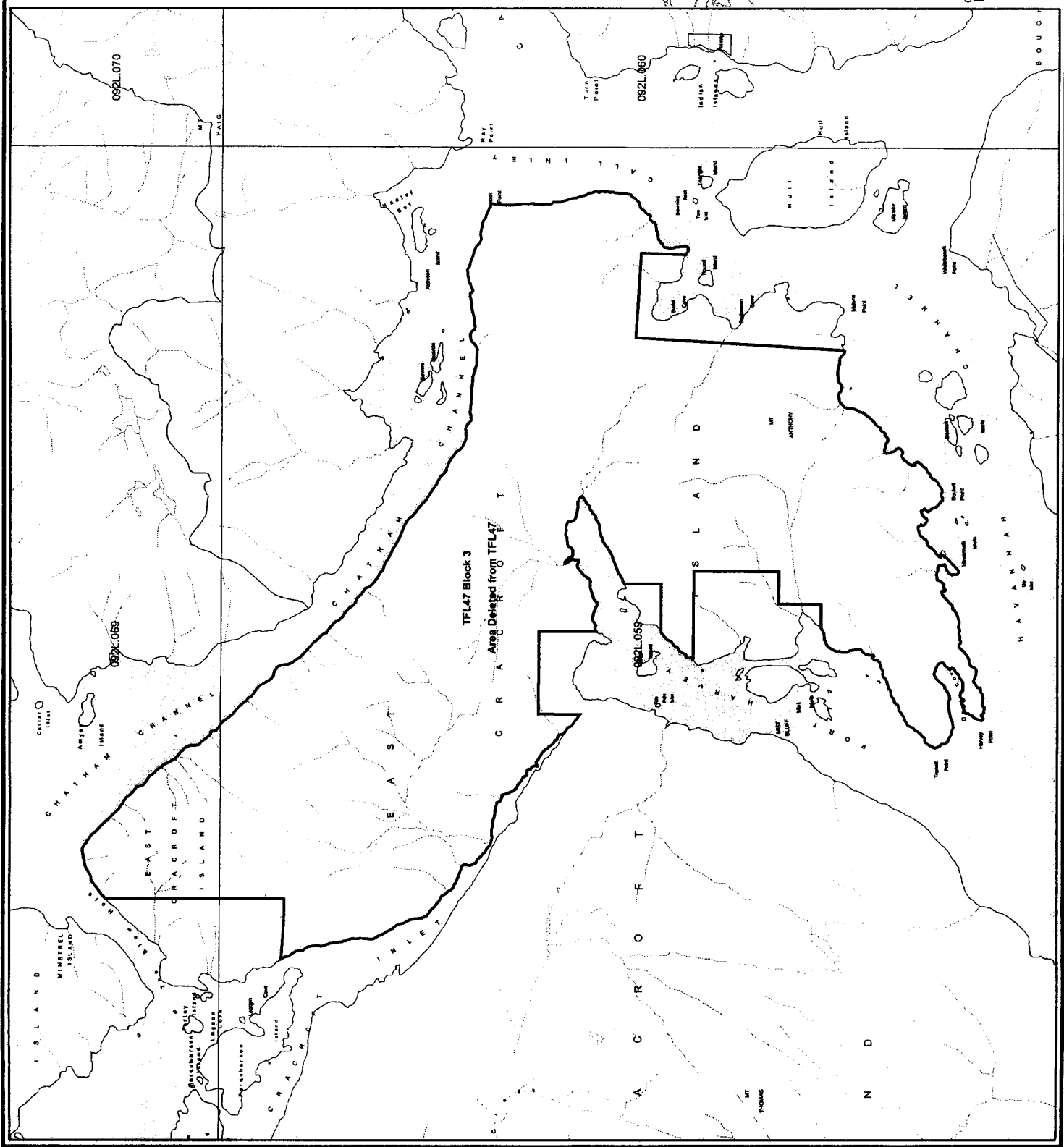
FOREST REGION: Coast
DISTRICT: North Island - Central Coast
LAND DISTRICT: Range 1 Coast
SHOWN AS A: BOLD SOLID LINE
PROJECTION: ALBERS
UNITS: METERS
DATUM: NAD 83
SPHEROID: GRS1980
DRAWN BY: NATHAN ENGE
REVISED BY: NATHAN ENGE

 Area Deleted from TFL 47



1:50,000
Kilometers
0 0.25 0.5 1.5 2

Map Produced By:
Coastal Resource Mapping Ltd.
Environmental Mapping and GIS Consulting






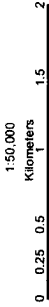
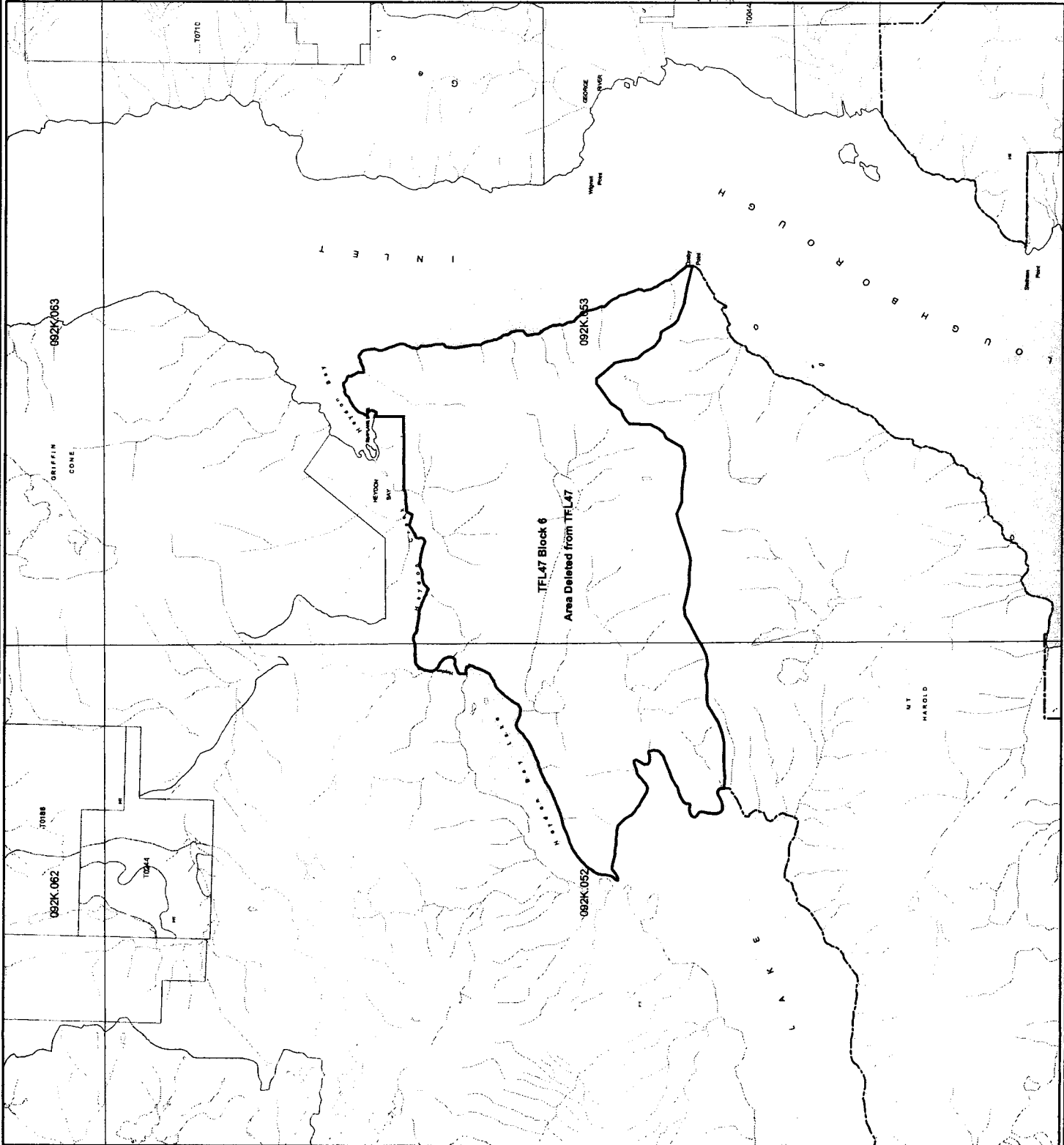
SCHEDULE 3
[ORDER 3(4) 23 - 3]

Deletion from TFL 47
Area: 1079 Hectares ±

FOREST REGION: Coast
DISTRICT: Campbell River
LAND DISTRICT: Range 1 Coast
SHOWN AS A: BOLD SOLID LINE
PROJECTION: ALBERS
UNITS: METERS
DATUM: NAD 83
SPHEROID: GRS1980

DRAWN BY: NATHAN ENGE
REVISED BY: NATHAN ENGE

 Area Deleted from TFL 47



Map Produced By:
Coastal Resource Mapping Ltd.
Environmental Mapping and GIS Consulting




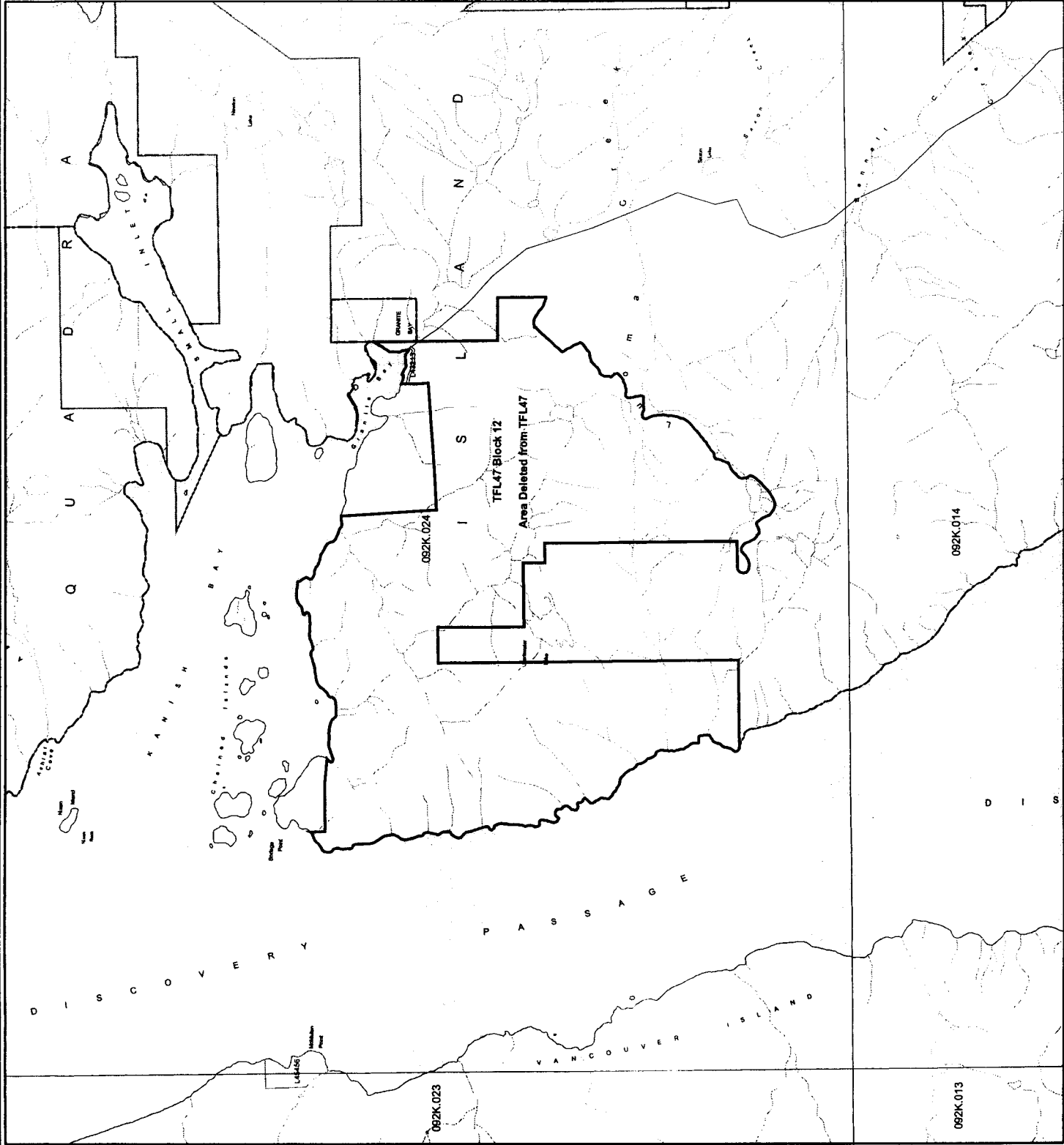
SCHEDULE 4
[ORDER 3(4) 23 - 3]

Deletion from TFL 47
Area: 1249 Hectares ±

FOREST REGION: Coast
DISTRICT: Campbell River
LAND DISTRICT: Sayward
SHOWN AS A: BOLD SOLID LINE
PROJECTION: ALBERS
UNITS: METERS
DATUM: NAD 83
SPHEROID: GRS1980

DRAWN BY: NATHAN ENGE
REVISED BY: NATHAN ENGE

 Area Deleted from TFL 47



1:50,000



Map Produced By:
Coastal Resource Mapping Ltd.

Environmental Mapping and GIS Consulting