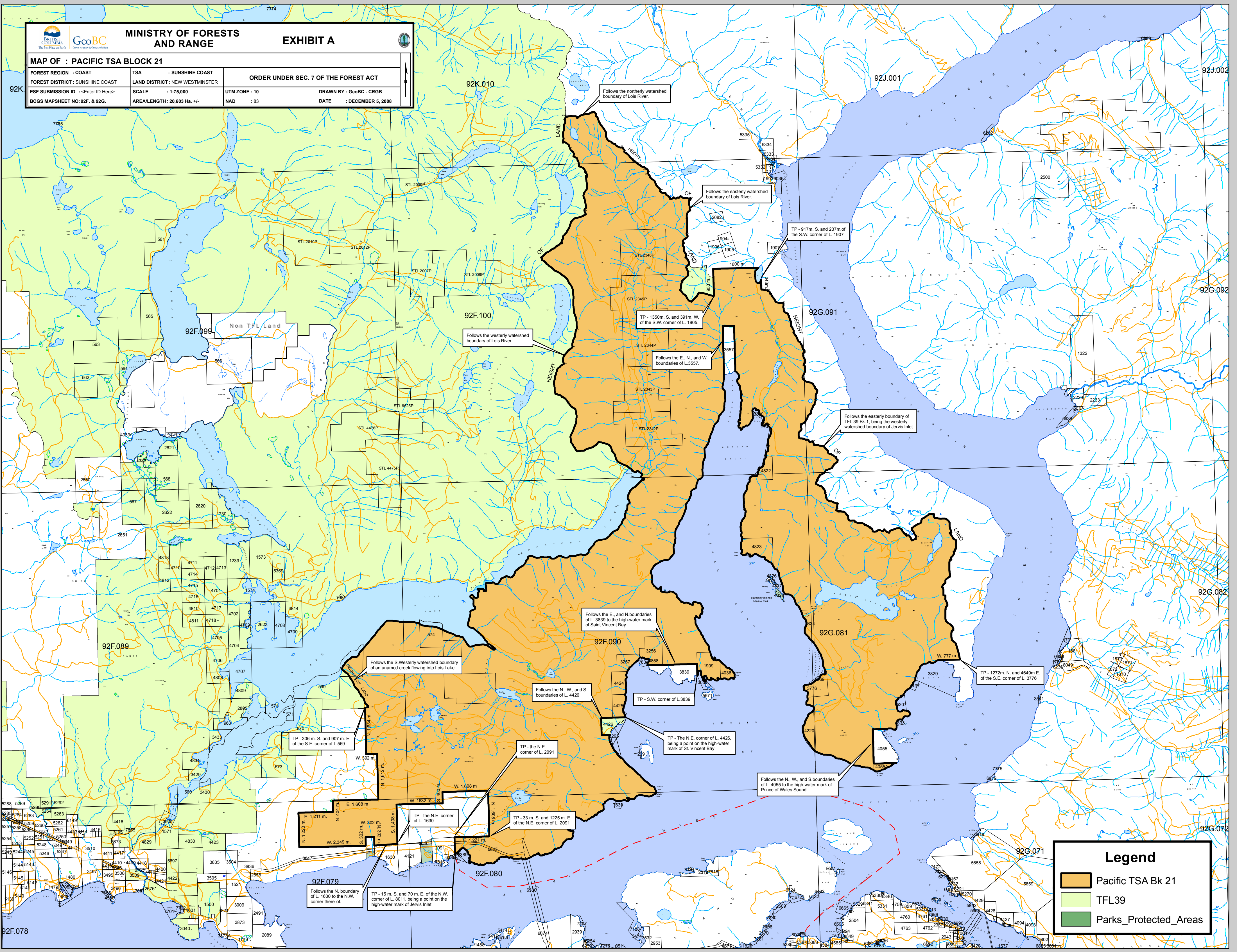




MAP OF : PACIFIC TSA BLOCK 21

FOREST REGION : COAST	TSA : SUNSHINE COAST	ORDER UNDER SEC. 7 OF THE FOREST ACT	
FOREST DISTRICT : SUNSHINE COAST	LAND DISTRICT : NEW WESTMINSTER	UTM ZONE : 10	DRAWN BY : GeoBC - CRGB
ESF SUBMISSION ID : <Enter ID Here>	SCALE : 1:75,000	NAD : 83	DATE : DECEMBER 5, 2008
BCGS MAPSHEET NO: 92F. & 92G.	AREA/LENGTH : 20,603 Ha. +/-		



Legend

- Pacific TSA Bk 21
- TFL39
- Parks_Protected_Areas

Follows the northerly watershed boundary of Lois River.

Follows the easterly watershed boundary of Lois River.

TP - 917m. S. and 237m. of the S.W. corner of L. 1907

TP - 1350m. S. and 391m. W. of the S.W. corner of L. 1905.

Follows the E., N., and W. boundaries of L.3557.

Follows the easterly boundary of TFL 39 Bk.1, being the westerly watershed boundary of Jarvis Inlet

Follows the westerly watershed boundary of Lois River

Follows the E., and N. boundaries of L. 3839 to the high-water mark of Saint Vincent Bay

Follows the S. Westerly watershed boundary of an unnamed creek flowing into Lois Lake

Follows the N., W., and S. boundaries of L. 4426

TP - S.W. corner of L.3839

TP - The N.E. corner of L. 4426, being a point on the high-water mark of St. Vincent Bay

Follows the N., W., and S. boundaries of L. 4055 to the high-water mark of Prince of Wales Sound

TP - 1272m. N. and 4646m E. of the S.E. corner of L. 3776

TP - the N.E. corner of L. 2091

TP - 308 m. S. and 907 m. E. of the S.E. corner of L. 569

TP - 33 m. S. and 1225 m E. of the N.E. corner of L. 2091

TP - the N.E. corner of L. 1630

Follows the N. boundary of L. 1630 to the N.W. corner there-of.

TP - 15 m. S. and 70 m. E. of the N.W. corner of L. 8011, being a point on the high-water mark of Jarvis Inlet