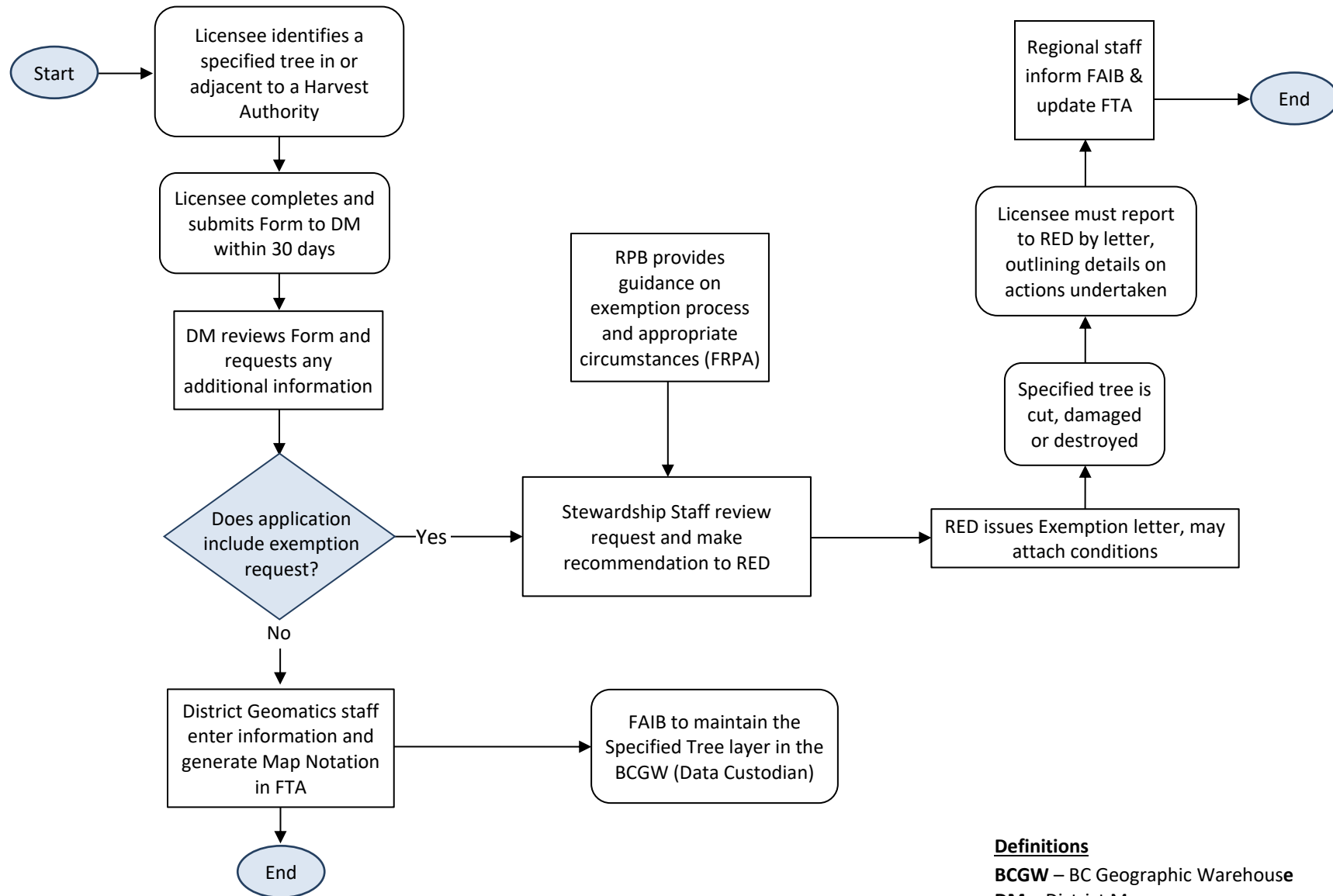


## Special Tree Protection Regulation Business Process



### Definitions

**BCGW** – BC Geographic Warehouse

**DM** – District Manager

**FAIB** – Forest Analysis and Inventory Branch

**FTB** – Forest Tenures Branch

**FRPA** – Forest and Range Practices Act

**RED** – Regional Executive Director

**RPB** – Resource Practices Branch

