

Ref: 229262

June 30, 2017

BY EMAIL

To: Regional Executive Directors, Ministry of Forests, Lands & Natural Resource Operations

RE: 2014 Cruise Compilation Manual Amendment No. 4 and CGNF Compilation Manual Amendment No. 3

The purpose of the memo is to inform you that Amendment No. 4 to the 2014 *Cruise Compilation Manual* and Amendment No.3 to the 2014 *CGNF Compilation Standards for the Coast Forest Area Manual* become effective on July 1, 2017.

The new manuals will be available on the internet at the following link:

<http://www2.gov.bc.ca/gov/content/industry/forestry/competitive-forest-industry/timber-pricing/timber-cruising/cruise-compilation-manual>

<http://www2.gov.bc.ca/gov/content/industry/forestry/competitive-forest-industry/timber-pricing/timber-cruising/cgnf-compilation-standards-for-the-coast-forest-region-manual>

Please find a copy of the Manual Highlights attached.

Comments or questions about this manual should be referred to Mark Koepke, Cruising Analyst, Timber Pricing Branch at (250) 483-5923 or Beth Eagles, Cruising Policy Forester, Timber Pricing Branch (250) 387-8307.



Steven F Kozuki, RPF
Director
Timber Pricing Branch

Attachments: 2

pc: Vera Sit, Executive Director, Timber Operations and Softwood Lumber
Dave Spinks, Regional Cruising Specialist, Cariboo, Thompson/Okanagan &
Kootenay/Boundary Regions
Greg Jonuk, Cruising Specialist, North Area
Carissa Logue, Cruising and Waste Specialist, Regional Operations Division - Coast Area

Highlights

2017 *Cruise Compilation Manual* Changes

The *Cruise Compilation Manual* is available on the Internet at:

<http://www2.gov.bc.ca/gov/content/industry/forestry/competitive-forest-industry/timber-pricing/timber-cruising/cruise-compilation-manual>

Section	Description
2.1 - Input Data	New version number 2017.00.
Appendix 9.11 – Percentages within Spruce Grades	The Coast spruce high grade historic grade percentages are rolled up for April 1, 2015 to March 31, 2017 for use in the grade algorithm for loss factor cruises.
Appendix 9.12 – Percentages within Cedar Grades	The Coast cedar high grade historic grade percentages are rolled up for April 1, 2015 to March 31, 2017 for use in the grade algorithm for loss factor cruises.
Appendix 12 - Wet and Dry Belt Douglas Fir BEC Zones	This table has been removed from the Cruise Compilation Manual and a link has been provided to the Cruising Manual, where the most up-to-date version of this table is maintained.
Valid Compilation Versions Site	The valid compilation versions web site will be updated to indicate that the Claymore and IFS CruiseComp compilation programs are approved to compile Coast area cruises for FLNRO appraisal purposes. http://www2.gov.bc.ca/gov/content/industry/forestry/competitive-forest-industry/timber-pricing/timber-cruising

Highlights

Amendment No.3 to the 2014 *CGNF Compilation Standards for the Coast Forest Area Manual* is effective July 1, 2017. The manual will be available on the Internet at:

<http://www2.gov.bc.ca/gov/content/industry/forestry/competitive-forest-industry/timber-pricing/timber-cruising/cruise-compilation-manual>

Section	Description
Appendix 5 Spruce High Grade Table	The Coast spruce high grade historic grade percentages are rolled up for April 1, 2015 to March 31, 2017 for use in the call grade net factor cruises.

The error message column describes the behavior of the system when the edit fails.

1. "I" - an informational message, the compilation will complete normally.
2. "W" - a warning, the compilation will complete but is suspect.
3. "F" - a fatal error, the compilation cannot be completed.
4. "N/A" - no error messages are generated for the field.

For a detailed explanation of the Cruise Tally Sheet and Map Area Statement fields refer to Chapters 6 and 7 of the *Cruising Manual*. The *Cruising Manual* is located on the Internet at URL

<http://www.for.gov.bc.ca/hva/manuals/cruising.htm><http://www2.gov.bc.ca/gov/content/industry/forestry/competitive-forest-industry/timber-pricing/timber-cruising/timber-cruising-manual>

The input data must be submitted in ASCII format. Here is an example of an input file:

```
V2013.02
AA99999123001205B057000100C 00000020A      Road Fork DEF      2
BA999991231 00003217503015010                A
CA99999123 01      10
CA99999123 02      10
DA9999912300101M 10
DA9999912300102M 10
FA99999123 CC01 10
FA99999123 CC02 10
GA99999123A
9A999991230010101C012545M 25000F175      CC 640314
2A999991230010101C01250001355S 7552 2      3301      MLF 8 -H13 -U99 -
2A999991230010101C01250002550S 13503 4 3 4300      GMDf1398G1398H 898U99 -
2A999991230010101C01250003525S 12401      5300      MLF1398H1398H 898U99 -
9A999991230010102C012554M 25000F175      CC 660314
2A999991230010102C01250001520S 14071      6400      MLF13 -H13 -I 8 -U99 -
2A999991230010102C01250002487S 11502 1      5300      MLF 8 -H1394I 8 -U99 -
2A999991230010102C01250003455S 9508      4302      SLH13 -U99 -
2A999991230010102C01250004565S 15982 1      6400      MLF1398G13 -H11 -U 8 -X99 -
2A999991230010102C01250005611S 16331      5405      MLF13 -F13 -H13 -I 8 -Y99 -
9A999991230010103C012557M 25000F175      CC 240314
2A999991230010103C01250001564S 145521      5300      MLF 8 -Y 650G13 -H11 -U 8 -X99 -
2A999991230010103C01250002584S 15221      6400      MLF13 -F 8 -H13 -I 8 -U99 -
9A999991230010198C012540C 25000F175      CC 590314
2A999991230010198C01250001 S
2A999991230010198C01250002 S
2A999991230010198C01250003 S
2A999991230010198C01250004 S
2A999991230010198C01250005 S
```

Figure 2.1a Input File (page 1).

A version number will be placed at the top of the file above card type A. It will start with a V followed by the year, followed by a period followed by 2 digits. For example, the first version in a year would be V2017.00 the next version would be V2017.01. Refer to the 'Valid Compilation Versions' link in the *Cruise Compilation Manual* for the most recent version numbers and cruise compilation companies that are approved to compile cruises for appraisal purposes in British Columbia. The link is located at:

<http://www2.gov.bc.ca/gov/content/industry/forestry/competitive-forest-industry/timber-pricing/timber-cruising>

A9.11 Percentages within Spruce Grades

Natural Resource District	D	E	F	G
Campbell River	4	7	33	56
Chilliwack	0	0	0	100
South Island	4	27	20	49
Coast Mountain	7	19	18	56
North Island - Central Coast	22	15	22	41
Haida Gwaii	14	21	7	58
Sea to Sky	0	0	0	100
Sunshine Coast	0	0	0	100

Source of the table is the Coast Grade Distribution Report 2015-04-01 to 2017-03-31.

Mature spruce logs (greater than 120 years based on the age in 10s and tree class) will be separated into D, E, F and G grades where appropriate.

Example: In the Campbell River District when a log reaches the D/E/F/G decision box

4% of the log net volume will be deemed to be D grade, 7% will be deemed to be E grade, 33% will be deemed to be F grade and 56% will be deemed to be G grade.

A9.12 Percentages within Cedar Grades

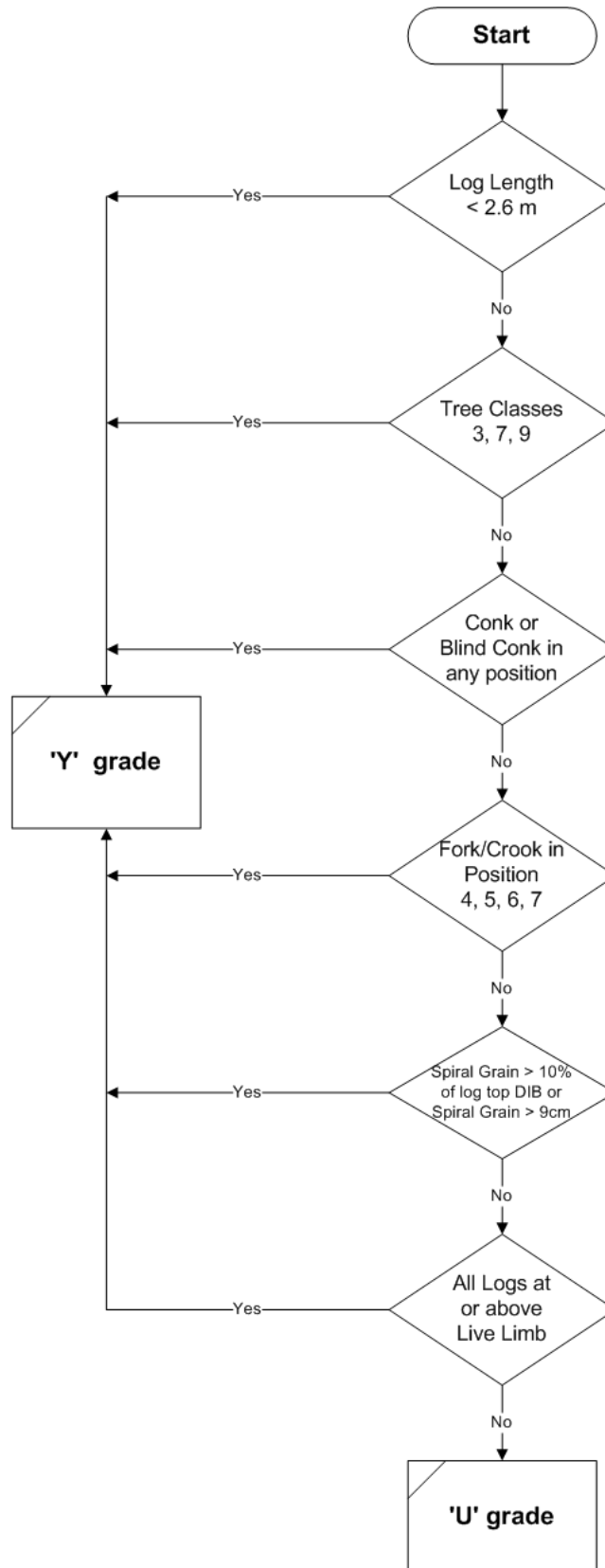
Natural Resource District	D	F	I
	K	L	M
Campbell River	34 66	12 88	62 38
Chilliwack	26 74	2 98	59 41
South Island	38 62	11 89	69 31
Coast Mountain	29 71	15 85	74 26
North Island - Central Coast	37 63	11 89	65 35
Haida Gwaii	24 76	12 88	69 31
Sea to Sky	11 89	2 98	65 35
Sunshine Coast	27 73	10 90	79 21

Source of the table is the Coast Grade Distribution Report 2015-04-01 to 2017-03-31.

Immature red cedar logs (up to 120 years old based on the age in 10s and tree Classes) flow only into the I-grade where appropriate. Mature red cedar (greater than 120 years based on the age in 10s and tree class) will be separated into I and M grades where appropriate.

Example: In the Campbell River District when a log reaches the D/K decision box, **34%** of the log net volume will be deemed to be D grade and **66%** will be deemed to be K grade.

A9.13 Deciduous



Appendix 12 Wet and Dry Belt Douglas Fir BEC Zones

Please refer to the [Cruising Manual](#) for the most recent table showing Wet and Dry Belt Fir Zones.