

April 6, 2016

## TIPSY

A new release of the **Table Interpolation Program for Stand Yields (TIPSY)** version 4.3.2 package software that includes TIPSY, Plotsy, Fansier, SiteTools and TIPSY to CBM is available for downloading. TIPSY is currently used extensively by silviculturists, timber supply analysts, forest planners and forest managers in B.C. The previous 4.3 version was released in August 2014.

To download the **TIPSY 4.3.2 version April 5, 2016 package**, please go to the Ministry of Forests, Lands and Natural Resource Operations, [Software Registration & Download Website](#) and download the self-extracting installation file **TIPSY4.3.2.msi**. When this file is run a TIPSY 4.3 directory and the following subdirectories will be created:

- **TIPSY**
- **Plotsy**
- **Fansier**
- **Sitertools**
- **CBM**

Support is provided for the MS Windows VISTA, and MS Windows 7 & 8 operating system, although TIPSY will likely perform well on earlier versions of MS Windows or Windows emulation software. We recommend that you close any other Windows applications before beginning the installation. If you wish to remove any previous versions of TIPSY, use the TIPSY uninstall icon if you have one, or the Windows Control Panel's Add/Remove function. You might want to keep previous versions of TIPSY/Batch TIPSY for business reasons. TIPSY 4.3.2 can read interactive (.tip), batch (.btp) files created with previous versions of TIPSY and BatchTIPSY. Fansier can read previous versions of interactive and batch (.reg) files.

## Installation

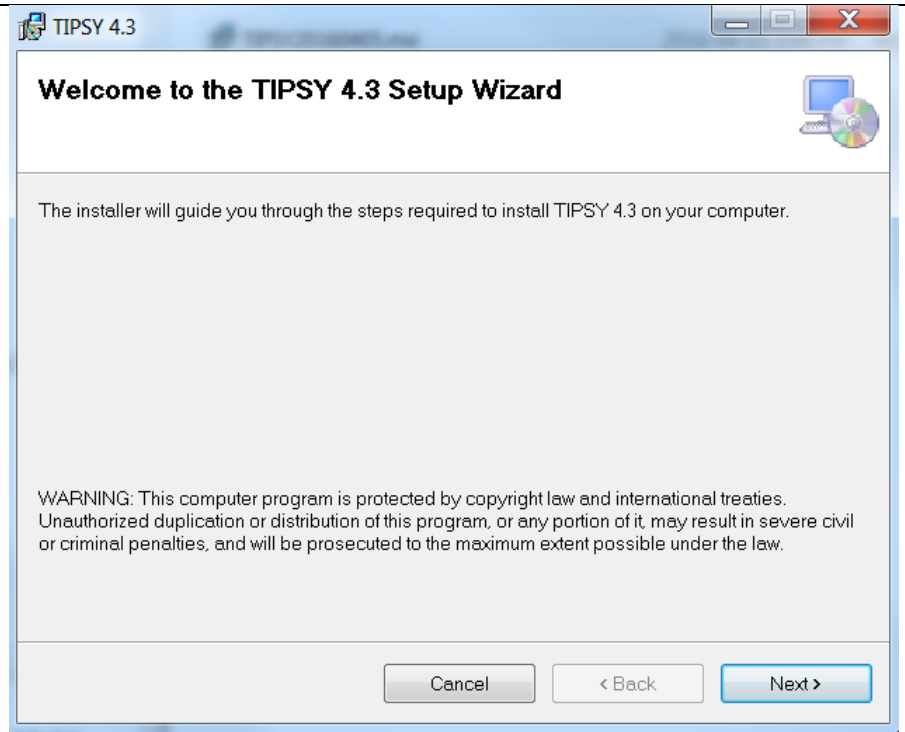
The programs TIPSY, Plotsy, Fansier, Sitertools and TIPSY to CBM can be installed as a package, or install separately as in the case of Batch TIPSY and SiteTools.

1. To install the TIPSY package uses the Microsoft Software Installation (MSI)<sup>®</sup> program for installation. To install TIPSY 4.3.2, that includes TIPSY, Plotsy, Fansier, Sitertools and CBM, double-click on the self-extracting installation file named **TIPSY4.3.2.msi** and begin installation as explained below.

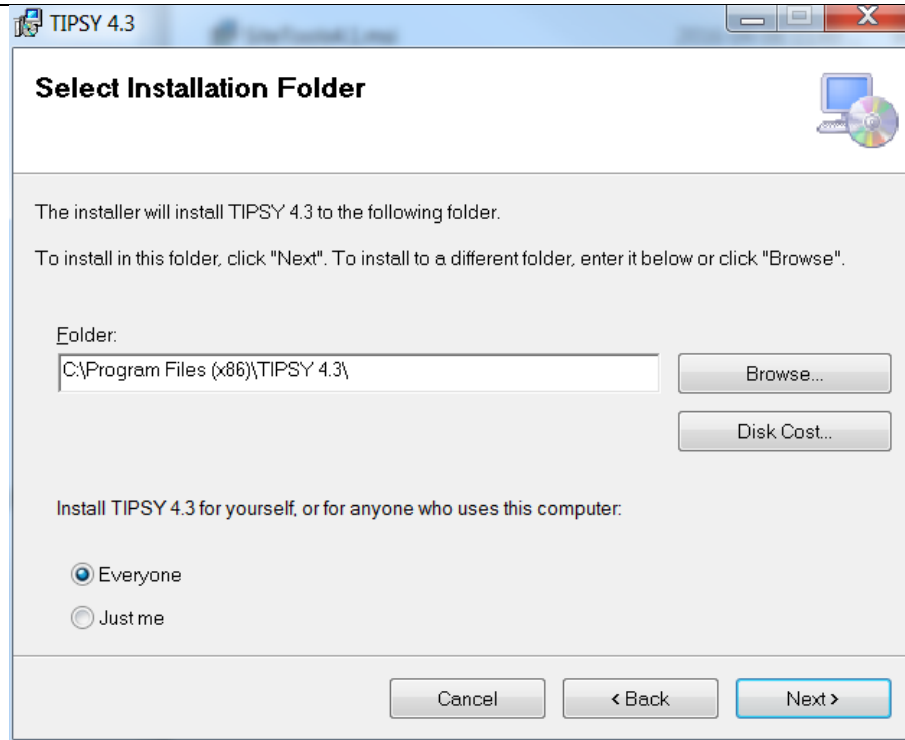
**Note:** The installation program only creates a TIPSY shortcut icon on your desktop. The rest of the programs can be manually added to your desktop or pin on your task bar after opening.

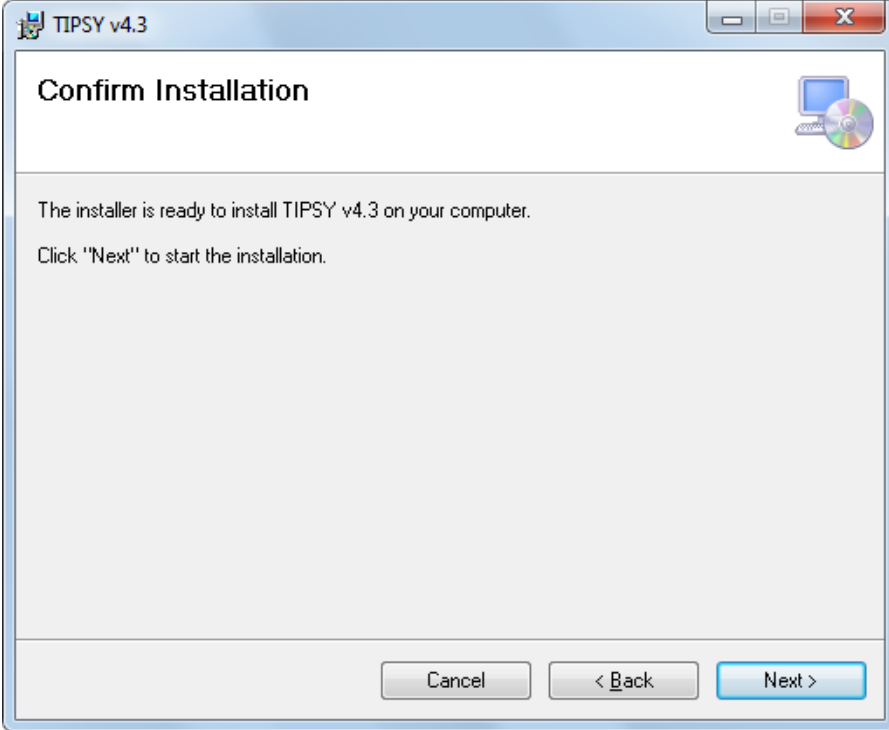
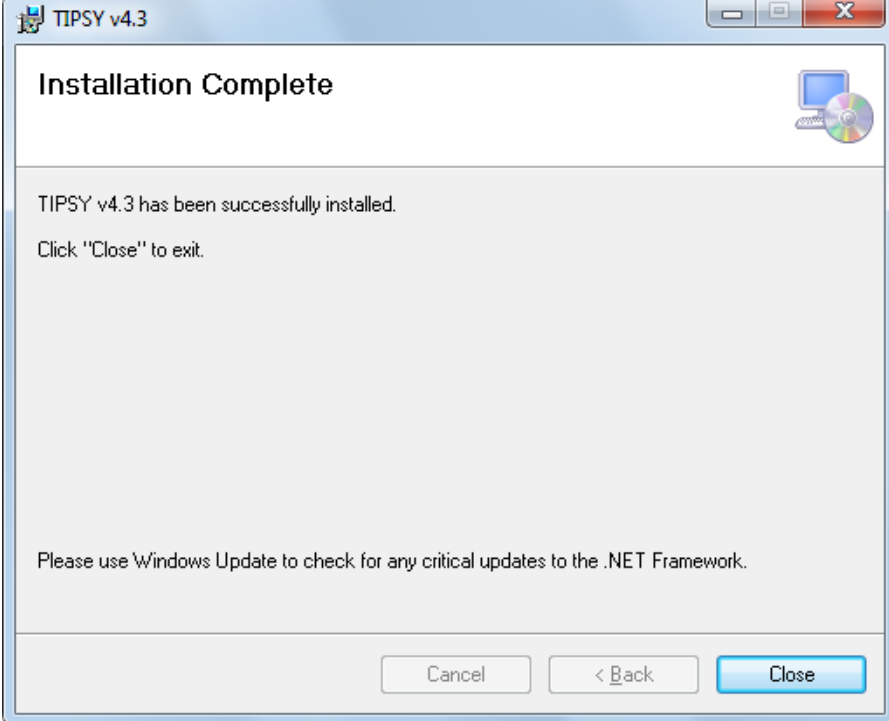
<b>1. Download and save this file from the <a href="#">Software Registration &amp; Download Website</a></b>	<b>TIPSY4.3.2.msi</b>
---	-----------------------

2. Double-click on: TIPSYP4.3.2.msi file and click Next to start the installation



3. Select the program folder to install the TIPSYP package and click Next



<p><b>4. Confirm installation and click Next to continue</b></p>	
<p><b>5. Installation completed and click Close to exit</b></p>	

2. To install Batch TIPSy only, download the file named Btipsy.exe and save it into the TIPSy directory as explained below.

<p><b>1. Download and save this file from <a href="#">Software Registration &amp; Download Website</a></b></p>	<p><b>Btipsy43.exe</b></p> <p><b>Note:</b> This program should be saved inside the TIPSy directory to run properly. The TIPSy database and other related files are necessary to run Batch TIPSy.</p>
--	--

3. To install Sitetools only, download the file named SiteTools4.1 and save it into the TIPS Y directory as explained below.

<b>1. Download and save this file from</b> <a href="#">Software Registration &amp; Download Website</a>	<b>SiteTools4.1.msi</b> <b>Note:</b> This program can be saved in any directory..
--	--

**For questions and technical support please contact:**

[Mario Di Lucca](#)

Growth and Yield Applications Specialist,  
Forest Analysis and Inventory Branch,  
Ministry of Forests, Lands and Natural Resource Operations  
Phone: (250) 387-6679