



Ministry of Forests



RESULTS INFORMATION SUBMISSION
SPECIFICATIONS

Form and Manner of Reporting
Forest for Tomorrow
And
Government Funded Programs

Edition 7C

June 2022

FOREWORD

This document is the 7th edition of the *RESULTS Information Submission Specifications for Government Funded Silviculture Activities (RISS-gf)* and was developed to provide guidance for reporting activities primarily funded under the Forest for Tomorrow (FFT) program. The RISS-gf guide has evolved to include additional programs conducting landbase investment activities and their specific data requirements are also included in this document.

This document contains information submission specifications: that is, specifications pertaining to what is required in each electronic submission or submission entry field. For more details on business requirements and ‘how to’, users can access specific topic related training modules on the [RESULTS](#) website.

ACKNOWLEDGMENTS

This edition has been revised by Karen Stout, F.I.T. and Caroline Wood, R.P.F. with assistance from the following individuals:

Mei-Ching Tsoi, R.P.F.
Nyssa Temmel, PhD, R.P.Bio.
Andrew Flockhart, F.I.T.
Emma Swabey, P.Ag.
Kelly Osbourne, R.P.F.
Lee-ann Puhallo, R.P.F.
Scott Akerley R.F.T.
Nigel Fletcher, R.P.F.

TABLE OF CONTENTS

FOREWORD.....I

ACKNOWLEDGMENTSI

1. PURPOSE..... 1

2. REPORTING TIMELINES..... 1

3. APPLICATION..... 1

4. INTRODUCTION..... 2

5. ACCESS AND SUPPORT 3

5.1 AUTHORIZATION TO BC GOVERNMENT SYSTEMS 3

5.1.1 *RESULTS Access* 4

5.2 SUPPORT 4

6. GENERAL DATA SPECIFICATIONS 4

6.1 OPENING CATEGORIES AND FUNDING SOURCES 4

6.2 RECORD MANAGEMENT 7

6.2.1 *Approval* 7

6.2.2 *Projects*..... 7

6.2.3 *Inter-Agency Number*..... 7

6.3 RESULTS DATA AND MAPPING STANDARDS 7

6.4 REPORTING TO NEW OPENING OR AN EXISTING FG OPENING 7

6.4.1 *Existing FG Opening* 8

6.4.2 *New Opening (non-tenured and tenure)* 8

7. OPENING DEFINITION SUBMISSION..... 10

7.1 OPENING DEFINITION DATA REQUIREMENTS10

7.2 TENURE (CONDITIONAL)11

7.3 CHANGES TO OPENING DEFINITIONS11

8. STOCKING STANDARDS SUBMISSION 11

8.1 STOCKING STANDARDS DATA REQUIREMENTS12

8.2 MODIFICATIONS TO STANDARDS UNITS14

9. DISTURBANCE AND SILVICULTURE ACTIVITIES SUBMISSION..... 14

9.1 DISTURBANCE DATA REQUIREMENTS14

9.2 SURVEYS (PLANNED OR COMPLETED) DATA REQUIREMENTS15

9.3 PLANNED TREATMENTS DATA REQUIREMENTS16

9.4 COMPLETED TREATMENTS DATA REQUIREMENTS17

10. FOREST COVER AND MAP SUBMISSION 19

10.1 POLYGON COMPONENT DATA REQUIREMENTS19

10.2 EVEN-AGED STANDS DATA REQUIREMENTS20

10.3 MULTI-LAYER STANDS DATA REQUIREMENTS21

10.4 ROADS22

11. DECLARATION SUBMISSION 22

12. GUIDANCE FOR MANAGING LARGE DISTURBANCE AREAS (WILDFIRE & PEST)	23
12.1 LARGE DISTURBANCE AREAS NOT SUITABLE FOR TREATMENT	23
12.2 LARGE DISTURBANCE AREAS SUITABLE FOR TREATMENT	24
13. AERIAL FERTILIZATION	26
13.1 REPORTING BY EXISTING VERSUS ‘SHELL’ OPENINGS.....	26
13.2 FERTILIZATION ACTIVITY DATA REQUIREMENTS	27
13.3 SUPPORTING DOCUMENTATION FOR AERIAL FERTILIZATION PROJECTS	30
14. JUVENILE SPACING	31
14.1 REPORTING BY ‘SHELL’ OPENINGS	32
14.2 JUVENILE SPACING ACTIVITY DATA REQUIREMENTS	32
15. PRUNING	35
16. FOREST HEALTH SURVEYS	36
16.1 FOREST HEALTH SURVEYS, NO PLOTS ESTABLISHED (AERIAL, LINE, WALKTHROUGH, PHOTO INTERPRETATION).....	36
16.2 FOREST HEALTH SURVEYS WITH PLOTS ESTABLISHED	38
17. STAND MONITORING SURVEYS	39
18. HABITAT ENHANCEMENT, RESTORATION & CONSERVATION PROGRAM	41
19. WILDFIRE RISK REDUCTION PROGRAM	44
20. BC PARKS LICENCE PLATE PROGRAM	48
21. FOREST ENHANCEMENT SOCIETY OF BRITISH COLUMBIA	49
22. FOREST CARBON INITIATIVE	51
23. FRPA S. 107 DECLARATION OR S. 108 APPLICATION	52
23.1 RESULTS UPDATES PRIOR TO S. 108 APPLICATION	52
23.2 S. 108 APPLICATION.....	53
23.3 FRPA S. 108 PROCESSING (POST APPROVAL).....	54
23.3.1 <i>Relief of Obligation for Partial or Complete Opening</i>	54
23.3.2 <i>Funding for Obligations</i>	54
24. GAR OPENINGS	56
24.1 NO HARVEST ZONES	56
24.2 MITIGATION OPENINGS EXTERNAL TO GAR AREAS.....	56
24.2.1 <i>Damaged GAR Mitigation Openings</i>	57
25. SMALL SCALE SALVAGE	57
26. DATA DISCREPANCIES	58
27. QUALITY ASSURANCE MONITORING	58

LIST OF TABLES

Table 1. Opening Category Codes..... 5

Table 2. FFT, FESBC, FCI, Wildfire Risk Reduction & FRPA s. 108 Funding Source Codes..... 6

Table 3. Opening definition general field specifications..... 10

Table 4. Opening definition multi-tenured openings field specifications. 11

Table 5. Minimum Stocking Standard Data Requirements for Site Plan Openings using SSIDs 13

Table 6. Minimum Stocking Standard Data Requirements for Silviculture Prescription Openings (no SSIDs) 13

Table 7. Disturbance Activity Data Requirements 15

Table 8. Survey Activity Data Requirements 15

Table 9. Planned Treatment Data Requirements 16

Table 10. Completed Activity Data Requirements..... 17

Table 11. Completed Planting Activity: Data Requirements 18

Table 12. Forest Cover Data Requirements: Even-Aged and Multi-Layer Stands. Polygon Component. 19

Table 13. Forest Cover Data Requirements: Even-Aged Stands Except Reserves. Inventory Component. 20

Table 14. Forest Cover Data Requirements: Even-Aged Stands Except Reserves. Silviculture Component. 21

Table 15. Forest Cover 21

Table 16. Declaration Data Requirements..... 22

Table 17. Data Requirements for Large Disturbance Areas Reviewed but NOT Suitable for Treatment..... 23

Table 18. Data Requirements for Large Disturbance Areas Suitable for Treatment..... 24

Table 19. Aerial Fertilization Data Requirements..... 27

Table 20. Juvenile Spacing Data Requirements 32

Table 21. Pruning Data Requirements: Not Previously Fertilized or Spaced 35

Table 22. All Pruning Activities Data Requirements 35

Table 23. Forest Health Surveys Data Requirements: No Plots Established 36

Table 24. Forest Health Surveys Data Requirement: Ground Plots 38

Table 25. Stand Monitoring Surveys Data Requirements 40

Table 26. Habitat Enhancement, Restoration and Protection Reporting Requirements 41

Table 27. FOR Region Administration Organization Codes..... 42

Table 28. Habitat enhancement, restoration, and conservation project prime objective categories. 42

Table 29. Species and Ecosystem Codes..... 43

Table 30. Habitat Enhancement, Restoration, and Protection Funding Source Codes..... 43

Table 31. Wildfire Risk Reduction Data Requirements 44

Table 32. Prescribed Fire Activity Data Requirements 46

Table 33. Prescribed Fire Activity Objective Codes 47

Table 34. BC Parks Project Types..... 48

Table 35. BC Parks Data Requirements 48

Table 34. FES Project Types 49

Table 37. FESBC Data Requirements 49

Table 38. FCI Data Requirements 51

LIST OF FIGURES

Figure 1. Fertilization Treatment Overlapping Existing Openings 26
Figure 2. Juvenile Spacing Treatment Workflow..... 31
Figure 3. FRPA S. 108 Processing Workflow..... 55

1. PURPOSE

This guide summarizes requirements for preparing and submitting information pertaining to Ministry of Forests (MFOR) Government Funded Programs, Forest Carbon Initiative (FCI), Forest Enhancement Society of British Columbia (FESBC), Habitat Restoration, Enhancement and Conservation, Wildfire Risk Reduction, and BC Parks Licence Plate Program funded activities (treatments and surveys), and planting authorized through FRPA s.52 to RESULTS (*Reporting Silviculture Updates and Land Status Tracking System*).

General user and formatting submission specifications, including field definitions, are summarized in the *RESULTS Information Submission Specifications - Licensee Submissions (RISS-Is)* document.

- Information on how to use RESULTS is found on the [RESULTS website](#).
- Access to RESULTS is governed by the RESULTS Access Policy (expand the relevant section under Application Access on the above website); and,
- [RESULTS training material](#) and documentation, including pre-recorded sessions are also available.

2. REPORTING TIMELINES

All government funded activities (excluding Habitat and Wildfire Risk Reduction activities) must be submitted to RESULTS on or before **March 31st**. Completed FESBC funded activities must be reported to RESULTS before payments will be made to the proponent.

Despite the March 31st deadline for government funded activities, all completed planting activities for FFT must be reported into RESULTS by **November 30th**.

Habitat and Wildfire Risk Reduction activities must be submitted to RESULTS by **May 31** (for projects completed by March 31) or by **December 31** (for projects completed prior to October 31).

3. APPLICATION

This guide provides direction to individuals who submit silviculture and habitat data to RESULTS as part of a government funded program: 1) in accordance with the *Forest Planning and Practices Regulation (FPPR)*, sections 86, 87, and 88; 2) in accordance with Ministry's contractual agreements; or 3) in accordance with FESBC contractual agreements.

Such programs include (but are not limited to):

1. Forests for Tomorrow (FFT) including pre-2006 small scale salvage openings.
2. FESBC, including other funding partners.
3. FCI.
4. Forest Stand Management Fund (FSMF) using funds from the Forest Stand Management Levy:
 - a. *Government managed non-replaceable forest licences (NRFL)*.
 - b. *Community salvage under community forest agreements*.

- c. *Government managed Small Scale Salvage (SSS).*
- d. *Forestry Licences to Cut (FLTC) with free growing obligations.*
5. *Forest & Range Practices Act (FRPA) s. 108 Applications.*
6. *Habitat Enhancement, Restoration and/or Conservation initiatives.*
7. *Wildfire Risk Reduction initiatives; and*
8. *Federal government funded reforestation activities.*

Sections 6 to 11 of this document provide information on general RESULTS submissions including opening definition, stocking standards, denudation, planned and completed activities, and forest cover.

Sections 12 to 25 include program specific information for the following activities:

- Section 12. *Guidance for Managing Large Disturbance Areas (Wildfire & Pest)*
- Section 13. *Aerial Fertilization*
- Section 14. *Juvenile spacing*
- Section 15. *Pruning*
- Section 16. *Forest health surveys*
- Section 17. *Stand monitoring surveys*
- Section 18. *Habitat Restoration, Enhancement, and Conservation*
- Section 19. *Wildfire Risk Reduction*
- Section 20. *BC Parks Licence Plate Program*
- Section 21. *FESBC*
- Section 22. *Forest Carbon Initiative*
- Section 23. *FRPA S. 108*
- Section 24. *GAR openings*
- Section 25. *Small Scale Salvage*

Sections 26 and 27 cover data discrepancies and quality assurance.

4. INTRODUCTION

RESULTS tracks silviculture information on the landbase by managing submissions of opening definitions, disturbances, silviculture and habitat activities, forest cover and obligation declarations as required by *FRPA*, *FPPR* and the *Woodlot Licence Planning and Practices Regulation (WLPPR)*.

RESULTS also tracks the following:

- Government funded activities on managed natural disturbance stands.
- Government funded activities on any free growing stands with previous licensee silviculture obligations.
- Government funded activities where the licensee is insolvent.
- Government funded activities on GAR mitigation openings.
- FESBC funded projects with an on-the-ground component.
- FCI funded projects.
- Government funded fertilization activities.
- Wildfire Risk Reduction funded activities.

- Habitat Restoration, Enhancement and Conservation activities; and
- Federal government funded reforestation activities.

RESULTS stores the following information:

- Opening definitions.
- Standards units and associated stocking standards.
- Disturbance (e.g., harvest, natural disturbance, etc.), silviculture, wildfire risk reduction and habitat activities and surveys.
- Forest cover and land status summary.
- Milestone declarations (regeneration and free growing).
- Standard unit modification history.
- Forward planning (mandatory for government funded programs).
- Rendered spatial data such as opening, standard units, disturbance activities, silviculture activities and forest cover.
- Comments relevant to the history of the opening; and
- Attachments: ‘mandatory’ information pertinent to the management of the openings.

The information supplied to RESULTS is used to:

1. Calculate statistics that support the provincial allowable annual cut allocations as part of the provincial timber supply review.
2. Report on performance of key outcome indicators in the *MFOR Annual Service Plan Report*.
3. Supply statistics for the *BC State of the Environment* report.
4. Update the provincial forest inventory.
5. Update the fuel type inventory for use in the Provincial Strategic Threat Assessment.
6. Calculate statistics for cost recovery under the Low Carbon Economy Leadership Fund.
7. Provide spatial data for publication and use in the GeoBC/Data BC Catalogue.
8. Provide supporting documentation for the government carbon strategy.
9. Provide supporting documentation for completed work.
10. Monitor submitters for compliance with reporting requirements.
11. Plan and track accomplishments for government and FESBC funded programs.
12. Track investments made to enhance, restore, and conserve habitat for wildlife.

5. ACCESS AND SUPPORT

5.1 AUTHORIZATION TO BC GOVERNMENT SYSTEMS

RESULTS and ESF systems are accessed by authorized users with either BCeID or IDIR accounts. To be granted access to the RESULTS application, a user must complete two steps:

1. Register for a BCeID or IDIR account; and,
2. Apply for access to RESULTS (through the RESULTS Online Access Request Service).

BCeID and IDIR Accounts

BCeID – an online service for private sector clients to securely access any BCeID participating British Columbia (BC) government website. Register for a [BCeID](#)

account for submissions relating to FFT, FESBC, FCI or FSMF programs. BCeID accounts are issued for most RESULTS submissions associated with government funded projects.

IDIR – accounts are only issued to third party program administrators.

5.1.1 RESULTS Access

BCeID or IDIR account holders may apply for RESULTS access. Access is granted via [RESULTS Online Access Request](#).

Applicants are granted access to RESULTS after completion of RESULTS training and/or by demonstrating competency through online testing. **Access is granted for 2 years as per current user access policy.** On or before expiry date, the authorized user must re-apply to renew access. Training modules and descriptions are available at [Results Training and Resources](#).

5.2 SUPPORT

1. Reference materials are available on the [RESULTS Business and Policy Documentation](#).
2. RESULTS support is available via the Business service desk NRSenquiries@gov.bc.ca
3. [Results Technical Documentation](#)

6. GENERAL DATA SPECIFICATIONS

General user and formatting submission specifications are found in the [RESULTS Information Submission Specifications - Licensee Submissions](#). This document specifies additional content requirements and MFOR policy applied to submissions related to government funded programs, FESBC, Habitat projects, Wildfire Risk Reduction projects, BC Parks Licence Plate projects and FCI funded activities.

6.1 OPENING CATEGORIES AND FUNDING SOURCES

Opening Category Codes (Table 1) in RESULTS are a meant to identify specific program areas and are based on program description, silviculture obligations, disturbance type and silviculture responsibility. *Funding Source Codes* (Table 2) are program specific and identify the funding source allocated to a program to carry out activities on the landbase. A funding source may not always be unique to a specific program as well as activities carried out on a given opening may be funded by various funding sources. Funding Source Codes for Habitat Enhancement Restoration are in Table 30.

Government Funded Silviculture Activities – Version 7C

Table 1. Opening Category Codes

Code	Description	Details
CONT	Non-tenured agreements under FESBC and FCI ; use NDFS if the activities are a result of a natural disturbance. *FCI and FESBC are also tracked by funding source codes FCE, FCM, or FES.	This would include planting, stand conversion, habitat enhancement, stand rehabilitation or operational fuel treatments.
EXCLU	Openings excluded from Crown Managed forests.	Openings within parks or other protected areas, or openings on Crown land that have been transferred to private ownership. This category also applies to landbase investment carried out in areas that are not part of the THLB such as parks, RMAs, urban interface, etc.
FFTFLTC	FFT – Forestry License to Cut.	BCTS FLTC, district administered, restricted to the FFT program.
FFTITSL	FFT – Innovative Timber Sale License. The opening category will not change for FCI funded reforestation.	BCTS initiative, BCTS administered, restricted to the FFT program. The FFTITSL may have an overlapping NREQ opening to report the pre-harvest FFT survey activities,
FTFSM	Forest Tenure – Forest Stand Management Forest Practices Code Act (FPC) s.71, S.30 FRPA.	Pertains to Non-Replaceable Forest Licenses (NRFL) only , where the free growing obligations have been transferred to the government under the FPC Act s. 71, non-Replaceable licenses under s.30 of FRPA.
FTLEVY	Blocks with silviculture obligations under FPPR s.46, for which a silviculture levy (Forest Stand Levy) under the Forest Stand Management Fund Regulation has been collected.	Pertains to Small Scale Salvage FLTCs not NRFLs.
FTNOLVY	Post April 1/09 blocks (1-5 ha for SSS openings) with silviculture obligations for which no silviculture levy has been collected	Pertains to Small Scale Salvage FLTCs not NRFLs.
FTMSL	Forest Tenure – Ministry Silviculture Liability	Instances where a licensee has become insolvent, the opening is not free growing, and the Ministry is now managing the silviculture liabilities.
NDAML	Natural Disturbance – Area-based Major Licensee	Non-tenured post-87, fire, wind, severe drought, insect, or disease attack in major licensee area-based tenures (excluding community forests and woodlots).
NDCF	Natural Disturbance – Community Forest	Non-tenured post-87, fire, wind, severe drought, insect, or disease attack in community forest tenures.
NDFS	Natural Disturbance – Forest Service	Non-tenured post-87, fire, wind, severe drought, insect, or disease attack in areas with no overlapping silviculture obligations. Includes under-planted stands (no overstorey removal).
NDVML	Natural Disturbance - volume-based Major Licensee	Non-tenured post-87, fire, wind, severe drought, insect, or disease attack in major licensee volume-based tenures.

Government Funded Silviculture Activities – Version 7C

Code	Description	Details
NDWL	Natural Disturbance - WL License	Non-tenured post-87, fire, wind, severe drought, insect, or disease attack in woodlot tenures.
NREQ	Areas not under tenure where site plans or stand management prescriptions are not required.	Government, FESBC or FCI funded activities such as fertilization and juvenile spacing. FFT openings used to report pre-harvest FFT survey activities. These NREQ openings may have overlapping FFTITSL openings where BCTS has completed overstory removal. Habitat restoration, enhancement, and conservation activities Wildfire Risk Reduction funded activities such as thinning, pruning, and surface fuel management
SPEX	Areas under tenure that are exempt from site plan requirements.	No reforestation or free growing obligations exist. SSS without free growing obligations. Wildfire Risk Reduction tenured openings

Table 2. FFT, FESBC, FCI, Wildfire Risk Reduction & FRPA s. 108 Funding Source Codes

Code	Description	Details
BCP	BC Parks funded	Fuel Management planning and/or operational treatments
CF	Wildfire Risk Reduction Funded projects	Wildfire Risk Reduction activities funded by Community Funding and Support
FCE	FCI under FESBC funding	Forest Carbon activities carried out with funding from FESBC.
FCM	FCI under Ministry funding	Forest Carbon activities carried out with MFOR funding (government funding).
FEP	Forest Employment Program	
FES	FESBC funded projects.	Activities funded by FESBC and carried out by various proponents. This does not include FCI projects or activities where FESBC has paid a silviculture levy to a district.
FRP	FRPA Application for Relief	Activities funded under FRPA s. 108 account until the stand is brought to the same condition it was prior to the damaging event.
FTL	FFT - Licensee delivered or delivery by proponent through third party administrator.	Activities funded by the FFT program that were carried out by licensees or proponents directly administered through third party administrator.
FTM	FFT – MFOR Administered	Activities funded by the FFT program that were carried out by branch, regions, or districts internally or with direct Ministry contracts to FFT proponents.
GFS	Forest Stand Management Fund	
WRR	Wildfire Risk Reduction funded projects	Wildfire Risk Reduction activities funded by the Community Resiliency Program, including prescribed fire.

6.2 RECORD MANAGEMENT

6.2.1 Approval

Some government or FESBC funded program submissions (e.g., amendments, stocking standards) may require Natural Resource District Manager approval. The submitter should notify either the RESULTS Coordinator(s) of the applicable district(s) and/or the MFOR Project Administrators after submitting items that require district approval, to ensure these documents are assessed and approved in a timely fashion.

6.2.2 Projects

The RESULTS Projects module allows MFOR Project Administrators (IDIR account users exclusively) to track cost, administrative details and carry out forward planning associated with silviculture projects, prepare contract requirements, and monitor field implementation. Project Administrators and specific standards agreements will specify whether use of the Projects module is mandatory for a given project. Access to RESULTS project administration is requested as a separate role.

6.2.3 Inter-Agency Number

The inter-agency field in RESULTS is designed to reconcile project completion with assigned project funding. For FFT and FESBC projects the project numbers are assigned in FIRS or FESIMS. Submitters must use the project numbers generated by either of those systems for all FFT and FESBC funded activities.

For government funded activities completed under the District or BCTS administration, we recommend creating a number that will help the organization with their own tracking e.g., contract number or it may be any other system the District/BCTS is using.

The inter-agency field may contain alpha-numerical characters up to a maximum of 10 characters. To avoid duplication, please DO NOT use a 7-digit number as it may conflict with the FIRS generated numbers.

For program specific inter-agency numbers, please refer to the data table for each respective program area.

6.3 RESULTS DATA AND MAPPING STANDARDS

Data and mapping standards are described in [RISS-Is](#) and [RESULTS technical specifications](#).

Professionals and non-professional staff who collect and prepare data for RESULTS submissions are expected to be familiar with data requirements and required precision and accuracy.

6.4 REPORTING TO NEW OPENING OR AN EXISTING FG OPENING

When RESULTS submissions are initiated, submitters must determine whether they submit to an existing opening (Section 6.4.1) or create a new opening (Section 6.4.2).

FESBC projects, Wildfire Risk Reduction projects, Habitat Restoration, Enhancement and Conservation projects, BC Parks Licence Plate Program projects, and FCI funded projects

will be reported to new openings except where they occur on existing FFTITSL openings. Fertilization activities may be reported to a shell opening or to existing opening(s) where the treatment area is contained within those opening(s) and forest cover will not be updated.

6.4.1 Existing FG Opening

If the completed treatment(s) and/or disturbance(s) is entirely contained within the bounds (on the ground) of an existing **free growing opening that was never under post-87 silviculture obligations** (e.g., opening categories that may be updated include P87, NDFS, SPEX and NREQ), and the new activity(ies) will cover most of an existing opening, the activity(ies) may be reported to the existing opening. Where new activities cover only a portion of an existing opening, it is preferable to create a new shell opening to avoid resubmitting existing forest cover for the untreated area (see Section 6.4.2). **Opening spatial submission and/or update is mandatory on existing openings.**

Please note that No UPDATES are to be carried out on existing free growing tenured openings or FG standard units within active openings. Tenured openings include the following opening categories: FTML, FTWL, FTCE, FTSBF, FTLEVY, FTNOLVY, FTFSM or FTMSL. Exception applies to fertilization treatments (FE) that are contained within the opening and where forest cover updates will not be carried out.

This is critical to maintaining current forest cover on areas where silviculture obligations existed.

6.4.2 New Opening (non-tenured and tenure)

New openings are created as non-tenured shells or as tenured openings.

6.4.2.1 Non-Tenured Openings (Shell Openings)

Shell openings may be created for:

- Activities on FG tenured openings or FG standards units (see box above).
- Completed treatment(s) and/or disturbance(s) that span several openings.
- Treatments on unmanaged stands where the area is not under any form of tenure.
- Juvenile spacing activities (Section 14).
- Fertilization activities, including FCI projects (Section 13).
- FCI activities except those that occur on FFTITSL openings.
- All other FESBC activities (Section 21).
- Habitat Restoration, Enhancement and Conservation activities (Section 18).
- Wildfire Risk Reduction activities (Section 19); and
- BC Parks Licence Plate Program activities (Section 20).

Where new activities cover only a portion of an existing opening, it is preferable to create a new shell opening to avoid resubmitting existing forest cover for the untreated area.

6.4.2.2 Tenured Openings

When a new tenure is created to complete harvesting activities, a new opening is created, and subsequent activities are reported to that opening.

- **Forestry License to Cut (FLTC)**

For all activities conducted on FLTCs under the FFT program, the opening category code FFTFLTC must be used. FFT surveys and other activities conducted over an area prior to the establishment of an FLTC are reported via non-tenured openings (shell openings).

- **Innovative Timber Sale License (ITSL)**

For reporting activities under ITSL that have a shared responsibility between BCTS and FFT:

1. FFT surveys and other activities conducted over an area **prior to the establishment of an ITSL** are reported via non-tenured openings (shell openings using opening category NREQ).
2. BCTS initiates the ITSL, and disturbance harvesting occurs.
3. BCTS tracks the opening and disturbance in the Land Resource Manager as if they hold the silviculture liabilities.
4. BCTS creates a new RESULTS opening using **'FFTITSL' opening category** and supplies the opening definition, the standards units and associated stocking standards, the disturbance activity and denuded forest cover.
5. Subsequent silviculture activities and updates (surveys, planting, forest cover updates, milestones, etc.) are reported to the FFTITSL opening created by BCTS (Step 4 above). FFTITSL is a viewable category and as such, the records will be available for other submitters to manage and update.

- **FESBC-funded harvesting**

For reporting harvesting under a tenured opening that is part of an approved FESBC project, see Section 21, Table 37, Habitat Enhancement, Hazard Risk Reduction: tenured opening.

- **WRR License to Cut**

For reporting harvesting under a tenured opening that is part of a Wildfire Risk Reduction project, the opening category code SPEX must be used. For reporting harvesting under a tenured opening for Wildfire Risk Reduction see Section 19, Table 31.

7. OPENING DEFINITION SUBMISSION

An opening must exist in RESULTS before other attributes or spatial data can be submitted.

Opening spatial submission and/or update is mandatory on all existing and new openings where forest cover is submitted.

7.1 OPENING DEFINITION DATA REQUIREMENTS

Table 3 defines the data requirement for an opening definition submission.

Where shell openings are created to report activities on area-based tenures (i.e., TFLs, Community Forests, First Nations Woodland Licenses, and Woodlots), include the License Number in the “Forest File ID” field - no cutting permits or blocks.

Table 3. Opening definition general field specifications.

Field	Required	Description and Conditions
Action	yes	Code that identifies the purpose of the opening definition report. I – Insert (for new opening definitions submitted for the first time) U – Update (for correcting existing opening definition data. <u>All</u> existing opening definition data is deleted and replaced with the corrected data. Users supply <u>all</u> information for all components of the opening definition.
Opening Gross Area	yes	The total area of the opening inclusive of all SUs (NAR), roads, reserves, and non-productive areas.
Licensee ID	optional	As specified by program area and/or contractual agreement. Unique ID supplied to identify the opening or cross reference program records.
Opening Category	yes	Please refer to codes in Table 1
Opening Location Name	optional	Identifies the location name of the opening. e.g., Petersen Creek; Foresters Mountain.
Maximum Allowable Permanent Access Percentage	conditional	The maximum percentage of the gross area of the opening that can be occupied by permanent access structures. Includes roads, landings, gravel pits, burrow pits, and permanent trails. If not supplied it will default to 7% but it can be updated.
Site Plan Exemption	yes	Values of either Y (yes) or N (no). Set the value to ‘Y’ for a silviculture prescription and set to ‘N’ for a site plan.
Tenure	optional	See Table 4

7.2 TENURE (CONDITIONAL)

Tenure information is required for any opening governed by a tenure. Online, these fields are in the **RESULTS305-Multi-Tenure** screen. These fields are different from the Opening Key fields, in that they assign the primary tenure to the opening.

Table 4. Opening definition multi-tenured openings field specifications.

Field	Required	Description and Conditions
Licence Number	yes	Licence number of the opening (or of a portion of the opening) corresponding to the cutting authority.
Cutting Permit	conditional	Cutting permit for the opening (or portion of the opening) corresponding to the licence in the cutting permit document. Required if a cutting permit applies to the opening.
Cutblock	yes	Approved cutblock identifier for the opening (or portion of the opening). Special characters are not recommended (e.g., -, /, _, *).
Is Prime Licence	yes	Values of Y (yes) or N (no). Set to 'Y' for the primary tenure (i.e., the managing tenure) of the opening, and set to 'N' for the secondary tenure(s) within the opening.

7.3 CHANGES TO OPENING DEFINITIONS

Occasionally, opening definitions may require updates because of changes to the landscape, new or better information or because of administrative changes (e.g., tenure information). RESULTS accommodates three kinds of changes to openings definitions:

1. **Spatial and Attribute Area Update:** to revise spatial boundaries and attributes of affected openings.
2. **Retire:** to permanently disable the opening from receiving further updates (the records associated with these openings are not deleted). History associated with the opening is archived. MFOR staff with Approval authorisation may retire openings. **Where a managed shell opening (except fertilization) entirely overlaps one or more existing free growing openings, the free growing opening(s) must be retired.**
3. **Delete:** to completely delete an opening record from RESULTS. History associated with the opening is permanently removed and is not archived. Candidate records for deletion are usually openings that were submitted in error. Deletions are completed with the assistance of NRS Application Service Desk staff.

8. STOCKING STANDARDS SUBMISSION

Stocking standards and Biogeoclimatic Ecosystem Classification (BEC) information are required for openings under MFOR responsibility. While these areas have no legal obligations, the objective is to manage them like obligated areas under FRPA. This allows the government to satisfy the Ministry Service Plan. Stocking standards are assigned to establish the regeneration and free growing milestones that enable the MFOR to monitor reforestation progress.

Standard Units (SUs) are created through Opening Definition submissions where surveys or reforestation activities will occur within an opening. Where SUs are created only for submitting regeneration and/or free growing declarations, assign the SUs and associated

stocking standards or stocking Standard IDs (SSIDs) based on the stocking and free growing survey parameters that were used to make the assessments.

Stocking standards are assigned to SUs as follow:

1. PREFERRED METHOD – Provincial Default Standards in accordance with the [Reference Guide for Forest Development Plan \(FDP\) Stocking Standards](#). Data requirements in Table 5 apply.
 - ✓ From FDP Stocking Standard document: the appropriate SSID that matches the desired stocking standards may be used for most government or FESBC funded projects where the stocking standard is primarily based on BEC.

2. UNIQUE CIRCUMSTANCES – District-Approved Default or other MFOR-Approved Standards
 - ✓ *Individual standards* may be loaded into RESULTS for given SUs in accordance with existing Higher Level Plans, Silviculture Strategies, Forest Management Plans, recent backlog prescriptions, Wildfire Risk Reduction projects, FESBC projects or ecological restoration projects, in consultation with, and under the direction of, district silviculture staff and the MFOR contract administrator (see [FFT Stocking Standards Policy](#)). This may be desirable for stands with management objectives that are not reflected in the Provincial default standards in the [Reference Guide for Forest Development Plan Stocking Standards](#). In this case, the stocking standards are sent to the RESULTS Inbox for District approval. Data requirements in Table 6 apply. Stocking standards for government-funded projects are not developed through the Forest Stewardship Plan Tracking System.

3. Silviculture Prescription – outstanding Forest Practices Code openings- NO SSIDs
 - ✓ The appropriate stocking standards based on ecology are manually assigned at the SU level. All elements of the stocking standards are manually entered. Any changes requiring updates to the stocking standards must be submitted via a major amendment requiring approval.

8.1 STOCKING STANDARDS DATA REQUIREMENTS

Depending on the option chosen to assign stocking standards, Table 5 and Table 6 list mandatory information required for stocking standard submissions. **SU Spatial is mandatory and can only be submitted via ESF.**

Note that for Natural Disturbance (ND*), NREQ, P87 and SPEX opening categories, RG and FG milestone dates are calculated from the approval date of the opening, not the DN start date. Offset years may need to be adjusted so that the milestone dates are appropriate for each SU.

Table 5. Minimum Stocking Standard Data Requirements for Site Plan Openings using SSIDs

Field	Details
Mapsheet & Opening No, Opening ID, Timber Mark/Cut Block; Licence/CP/Cut Block	Must use one of the mandatory keys used for RESULTS ESF Submission.
SU	A unique alphanumeric identifier.
Net Area to be Reforested (NAR)	Area in hectares must be > 0.
BEC fields	BEC zone, subzone, and site series.
SSID	Unique number in the Reference Guide to Forest Development Plan Stocking Standards , specific to ecosystems within each region, to which a specific set of stocking standards has been assigned. When entered, all related stocking standards are automatically generated for the defined SU in RESULTS.
Spatial (Map) for areas that will receive treatment	SU boundaries must be provided in spatial submission (via ESF). *Roads and landings are not mapped, only the outer boundaries are to be submitted

Table 6. Minimum Stocking Standard Data Requirements for Silviculture Prescription Openings (no SSIDs)

Field	Details
Mapsheet & Opening No, Opening ID, Timber Mark/Cut Block; Licence/CP/Cut Block	Must use one of the mandatory keys used for RESULTS ESF Submission.
SU	A unique alphanumeric identifier.
Net Area to be Reforested (NAR)	Area in hectares must be > 0.
Regen Offset	The end of the period, following the commencement date, by which a stand being established on the NAR must conform to regeneration stocking standards. In RESULTS, this is an offset field called ‘Regen’.
FG Offsets	The end of the period, following the commencement date, by which a stand being established on the NAR must conform to free growing stocking standards. In RESULTS, the offsets fields are referred to as ‘Early’ and ‘Late’.
Preferred Species/Minimum Heights	Preferred species and the minimum heights that must be attained by the preferred species in meters.
Acceptable Species/Minimum Heights	Acceptable species and the minimum heights that must be attained by the acceptable species in meters.
Target Stocking	Target number of trees per hectare of preferred and acceptable species.
Minimum Preferred and Acceptable Stocking	Minimum number of trees per hectare of preferred and acceptable species.
Minimum Preferred Stocking	Minimum number of trees per hectare of preferred species.
Max Conifers (stems/ha)	Maximum allowable stand density of total countable conifers, above which openings must be spaced down to a specified density of well-spaced preferred and/or acceptable stems/ha, to achieve free growing status.
Post Spacing (Min/Max)	Minimum and maximum density of well-spaced preferred and/or acceptable stems/ha to which the stand must be spaced to achieve free growing status.
Minimum Inter-tree Distance	Minimum allowable horizontal distance between trees in meters.
% Height Above Brush	Required minimum height of the tree above competing vegetation in a 1-meter radius, expressed as a percentage.

Field	Details
Comment	Required where applicable to expand or justify stocking requirements. Select a standard comment type code, then type applicable comment related to the stocking standards.
Spatial	SU boundaries must be provided in spatial submission (via ESF). *Roads and landings are not mapped, only the outer boundaries are to be submitted

8.2 MODIFICATIONS TO STANDARDS UNITS

Modifications to SUs and associated stocking standards are submitted into RESULTS via ESF if spatial updates are required. If there are no changes to the spatial data, the updates may be submitted online.

Changes to site plan openings, which do not require approval, may be made through a site plan amendment.

Changes to **silviculture prescription openings** that do not require approval (NAR adjustment because of better available information) may be made via a minor amendment. Any other updates required to stocking standards must be submitted via a silviculture prescription amendment and will require approval. **The correction functionality is only used to update erroneous information that is not consistent with the latest approved version of the prescription or submitted in error.**

9. DISTURBANCE AND SILVICULTURE ACTIVITIES SUBMISSION

Data requirements are described for four activities: disturbance, surveys, planned treatments, and completed treatments. **FFT and FCI funded silviculture activities must be reported using the codes provided in the following published guidance document [FFT and FCI Base/Technique/Method Valid Code List](#)**

9.1 DISTURBANCE DATA REQUIREMENTS

Fields in Table 7 are required with disturbance submissions. Data fields not listed in the table are optional. Disturbance reporting must be accompanied by forest cover updates that include both spatial and attributes information. Disturbance activities may be reported online in RESULTS or through the ESF. Note, when reporting a new natural disturbance activity to an existing P87 opening, please update the opening category to NDFS. Refer to Section 14.2 for denudation reporting for juvenile spacing shell openings, Section 19 for Wildfire Risk Reduction and Prescribed Fire, Section 21 for FESBC funded activities, and Section 22 for FCI projects.

Table 7. Disturbance Activity Data Requirements

Field	Details
Mapsheet & Opening No, Opening ID, Timber Mark/Cut Block; Licence/CP/Cut Block	Must use one of the mandatory keys used for RESULTS ESF Submission
Disturbance Code	As appropriate: B (burned, wildfire) E (stand enhancement) F (flood) I (slide) L (logged) P (pest – e.g., beetle) R (rehabilitation) S (salvage) W (wind damage)
Disturbance Start Date	YYYY-MM-DD
Disturbance Completion Date	YYYY-MM-DD
Disturbance Area	In hectares
Silvicultural System	Required for projects that involve harvest activity. e.g., CLEAR, CCRES, SELEC
Silvicultural Variant	Conditionally required for IMCUT, SEEDT, SELEC, SHELТ.
Silvicultural Cut Phase	Required for projects (e.g., salvage) that involve harvest activity. e.g., REMOV, SALV

9.2 SURVEYS (PLANNED OR COMPLETED) DATA REQUIREMENTS

Fields in Table 8 are required with planned or completed survey submissions. Data fields not listed on the table are optional. Enter survey submissions online in RESULTS or through the ESF. Additional reporting standards for Forest Health Surveys, Stand Development Monitoring Surveys, Habitat projects, Wildfire Risk Reduction projects, Prescribed Fire, FCI and FESBC surveys are found in Sections 16 to 22.

Table 8. Survey Activity Data Requirements

Field	Details
Mapsheet & Opening No, Opening ID, Timber Mark/Cut Block; Licence/CP/Cut Block	Must use one of the mandatory keys used for RESULTS ESF Submission.
Base	SU All FFT and FCI funded silviculture activities must be reported using the codes provided in the following published guidance document: FFT and FCI Base/Technique/Method Valid Code List
Technique	RE (Reconnaissance) RG (Regen/Stocking) RA (Regen Performance Assessment) FG (Free Growing) FG-FILE (Impeded Stands Data Review) SF (Surface Fuel Management) Or other appropriate code relevant to program requirement.
Method	PLOT RECCE WALK

Government Funded Silviculture Activities – Version 7C

Field	Details
	FILE Or other appropriate code relevant to program requirement
Activity Status Indicator (in RESULTS)	Set to 'Planned' or 'Complete' as appropriate. <i>Some ESF submission software has an Actual Date Indicator instead of an Activity Status indicator. In the case of a 'yes' or 'no' indicator.</i> <ul style="list-style-type: none"> Set to 'no' if the survey is planned. Set to 'yes' if the survey has been completed.
Activity Date (Planned or Completion Date)	YYYY-MM-DD. Date of the planned or completed survey. For ESF submission software that does not have an 'Activity Status' indicator: <ul style="list-style-type: none"> If <i>Actual Date Indicator</i> is set to 'no' this the planned commencement date for the survey. If <i>Actual Date Indicator</i> is set to 'yes', this is the date on which the survey was completed.
Funding Source	Enter applicable funding source code (Table 2).
Net Area Treated	Areas surveyed, in hectares
Cost	Actual cost is mandatory for FCE, FCM, FTL or FTM funding source, and all HER activities
Inter-agency No.	FFT project number listed in FIRS or Ministry generated number (FFT or FCI) (Sec. 6.2.3) or FESBC project plan number listed in FESIMS. Required for completed projects under an FFT, FCI or FESBC project. WRR projects numbers generated by Ministry.
Activity Spatial	Mandatory for all programs unless otherwise specified. *Roads and landings are not mapped, only the outer boundaries are to be submitted
Attachments	Where an IRR workbook or a Return on Investment (ROI) analysis is completed, the workbook or analysis must be attached to the opening in RESULTS. All activities conducted for LBIS/FFT/FESBC/FCI/WRR delivery such as prescriptions, maps, plots locations and monitoring data is to be attached as a deliverable under contractual requirement.
Forest Cover	Forest cover updates, both attribute and spatial, are required based on survey technique or as specified by program area. *Roads and landings are not mapped, only the outer boundaries are to be submitted

9.3 PLANNED TREATMENTS DATA REQUIREMENTS

Forward planning to free growing, using planned activities, is required for Government funded programs. The fields in Table 9 are required for planned treatment submissions, all other data fields are optional. Submit planned treatment submissions through an ESF submission since spatial is mandatory for all government funded programs.

Table 9. Planned Treatment Data Requirements

Field	Details
Mapsheet & Opening No, Opening ID, Timber Mark/Cut Block; Licence/CP/Cut Block	Must use one of the mandatory keys used for RESULTS ESF Submission.
Activity Base	Select appropriate codes for the planned activity(ies). At a minimum, include Activity Base.
Activity Technique Method	All FFT and FCI funded silviculture activities must be reported using the codes provided in the following published guidance document: FFT and FCI Base/Technique/Method Valid Code List

Field	Details
Activity Status Indicator (RESULTS)	Set status to ‘Planned’. <i>(Note: Some ESF submission software has an ‘Actual Date Indicator’ instead of an Activity Status indicator. In this case, for planned data, set Actual Date Indicator to ‘no’.)</i>
Planned Date	YYYY-MM-DD (planned commencement date of activity)
Funding Source	Select appropriate funding source code (Table 2).
Treated amount	Planned number of hectares proposed for treatment.
Planned Cost	Total estimated planned cost (\$). Use current local costs or estimates provided by funding program.
Spatial	Mandatory for all programs unless otherwise specified. *Roads and landings are not mapped, only the outer boundaries are to be submitted

9.4 COMPLETED TREATMENTS DATA REQUIREMENTS

Fields in Table 10 are required with completed treatment submissions. Data fields not listed in the table are optional. **Forest cover submissions with spatial information accompany completed treatment submissions.** Accompanying forest cover submissions are transmitted through the ESF.

A complete listing of RESULTS Activity Codes and code combinations can be assessed in RESULTS by clicking on “Search” in the upper left corner of the screen and then click on “Code Table Search” and select “Activity Code Search”. Planting activity codes are provided in Table 9.

***Note: to avoid creating orphan records, when reporting previously planned activities, please ensure the planned records and associated attributes are updated to complete.**

Table 10. Completed Activity Data Requirements

Field	Details
Mapsheets & Opening No, Opening ID, Timber Mark/Cut Block; Licence/CP/Cut Block	Must use one of the mandatory keys used for RESULTS ESF Submission
Base Technique	For complete list of valid codes and associated descriptions please refer to the code tables in the RESULTS online technical specifications . All FFT and FCI funded silviculture activities must be reported using the codes provided in the following published guidance document: FFT and FCI Base/Technique/Method Valid Code List
Activity Status Indicator (RESULTS)	Set status to ‘Complete’. <i>(Note: Some ESF submission software has an ‘Actual Date Indicator’ instead of an Activity Status indicator. In this case, for activity completion data, set Actual Date Indicator to ‘yes’.)</i>
Activity Completion Date	YYYY-MM-DD (date of activity completion)
Funding Source	Select appropriate funding source code (Table 2).
Treatment Cost	Actual cost is mandatory for FCE, FCM, FTL or FTM funding source and all Habitat Restoration, Enhancement and Conservation funding sources
Net Area Treated	Area treated, in hectares

Government Funded Silviculture Activities – Version 7C

Field	Details
Inter-agency No.	FFT project number listed in FIRS or Ministry generated number (FFT or FCI) (Sec. 6.2.3) or FESBC project plan number listed in FESIMS or Wildfire Risk Reduction projects numbers generated by Ministry. Required for completed projects under an FFT, FCI, Wildfire Risk Reduction or FESBC project.
Activity Spatial	Mandatory for all programs unless otherwise specified. *Roads and landings are not mapped, only the outer boundaries are to be submitted
Forest Cover	Forest cover updates are required with all government funded programs where a treatment and/or activity results in a change in forest cover attributes. *Roads and landings are not mapped, only the outer boundaries are to be submitted

Table 11. Completed Planting Activity: Data Requirements

Field	Details
Base	PL All FFT and FCI funded silviculture activities must be reported using the codes provided in the following published guidance document: FFT and FCI Base/Technique/Method Valid Code List
Technique	FP (Fill Planting) PL (Planting) RO (Roadside) RP (Re-Planting) RR (Road Rehab) SL (Slide)
Method	BROOT (Bareroot) COPPR (Copper Treated Plugs) CONE (Cone Style Protectors) CTAIN (Container) MAINT (Maintenance) MXPLT (Mixed Stock) RBROO (Resistant Bareroot) RCOOP (Resistant Copper Treat) RCTAI (Resistant Container) TRANS (Transplanted Stock) WHIPS (Whips) Under (Planting trees beneath fire killed overstory)
Species	See RESULTS species code list
Number Planted	
Number Beyond Transfer Limit	
Lot	Seedlot must exist in the Seed Planning and Registry (SPAR) database and must match the species.
Request ID	Mandatory for all Government Funded programs. *Note: that the Request ID can only be supplied in RESULTS online as field is not part of the ESF schema. When entering the Request Key online, the Species and Lot fields are automatically populated
Spatial	Activity spatial is mandatory for all PL activities completed under all funding sources. *Roads and landings are not mapped, only the outer boundaries are to be submitted

10. FOREST COVER AND MAP SUBMISSION

Forest cover updates are required with all government, FCI or FESBC funded programs where a treatment and/or activity results in a change in forest cover attributes. The only exception is if the understory is modified but the overstory as reported in the most recent inventory is unchanged. See Section 19 for additional forest cover reporting requirements for Wildfire Risk Reduction funded projects.

All forest cover updates must be submitted via ESF and must include both GML and XML data files (spatial and attributes) for the entire opening.

When reporting new activities on an existing opening where forest cover updates are mandatory, forest cover must be reported for the entire opening even if the treatment or survey only covers a portion of the opening. All untreated polygons must be updated as forest cover updates are a complete delete and replace.

10.1 POLYGON COMPONENT DATA REQUIREMENTS

Polygon component fields in Table 12 are required with forest cover submissions. For reserve polygons where the forest cover has not changed since the last inventory, only the attributes and spatial shown in Table 12 are submitted.

Table 12. Forest Cover Data Requirements: Even-Aged and Multi-Layer Stands. Polygon Component.

Field	Details
SU label	Required only for IMM, MAT or NSR polygons that are located within an SU.
Polygon ID	
Gross Area	Area of the polygon.
Reference year	Year of survey.
Reserve Type	Group (G), Dispersed (D). Required if reserves (long-term or short-term) exist within the polygon.
Reserve Objective	BIO (Biodiversity), WTR (Wildlife Tree Retention), CHR (Cultural Heritage Resource), TIM (Timber Management), VIS (Visual), etc. For complete list of valid codes and associated descriptions please refer to the code tables in the RESULTS technical specification .
Site Index	
Site Index Source	Select appropriate code.
Stocking status	Select appropriate code.
Stocking type	Select appropriate code.
Spatial location of each forest cover polygon (GML)	Load through ESF.
Non-mapped area	Conditional - Include areas (ha) that should be taken out of the productive forest area (NAR) but are too small to map (< 0.1ha) but should be accounted for as well as roads and landings if they are not mapped. Consists of four components: ID, area, stocking status and stocking type.

10.2 EVEN-AGED STANDS DATA REQUIREMENTS

Inventory component data is required for all even-aged stands except reserves (Table 13). Silviculture component data (Table 14) is required for even-aged stands when differences exist between inventory and silviculture forest cover. Even-aged inventory and silviculture component data may be combined into the inventory component if no significant differences exist between species composition in the silviculture (crop trees) and inventory (all trees) components; that is, if the stand inventory consists almost entirely of preferred and acceptable crop trees.

Table 13. Forest Cover Data Requirements: Even-Aged Stands Except Reserves. Inventory Component.

Field	Details
Layer Component	Component = I. Inventory component.
Crown Closure	The percentage of ground area covered by the vertically projected crowns of the tree cover: estimated to the nearest 10%. Required when tree species are entered.
Basal Area	Average cross-sectional residual basal area (m ²) per hectare of all stems ≥ 12.5 cm diameter at breast height (dbh: 1.3 m). <ul style="list-style-type: none"> • Required for all Wildfire Risk Reduction projects • Required if BA is part of stocking requirements • Required for commercial thinning or intermediate cuts where BA is used to assess post-harvest stocking requirements • Required where the BA of dispersed stems is > 5 m² per hectare • Not required for even-aged stands, except if prescribed as an even-aged partial or intermediate cut
Total Stems/ha	Refers to all stems/ha: both crop and non-crop trees.
Species	Code representing the tree species (primary, secondary, tertiary) within the polygon.
Species %	Estimate of given inventory component tree species percentage within the polygon. Sum of all species in the inventory component must total 100%.
Average Species Age	<ul style="list-style-type: none"> • Stocking surveys: average age of the leading species dominant and co-dominant trees. • Free growing surveys: average age of the leading species dominant and co-dominant trees and the average age of the second species dominant and co-dominant trees.
Average Species Height	<ul style="list-style-type: none"> • Stocking surveys: average height of the leading species dominant and co-dominant trees. • Free growing surveys: average height of the leading species dominant and co-dominant trees and the average height of the second species dominant and co-dominant trees.
Damage Agent	Required where stand has been damaged.
% Incidence of Damage Agent	Required if damage agent present.
Area Affected by Damage Agent	Required if damage agent present.

Table 14. Forest Cover Data Requirements: Even-Aged Stands Except Reserves. Silviculture Component.

Field	Details
Layer Component	Component = S. Silviculture component.
Total Well Spaced Stems/ha	
Well-Spaced Stems/ha	
Free Growing Stems/ha	
Species	
Species %	Must total 100% for all species.
Average Species Age	<ul style="list-style-type: none"> • Stocking surveys: for the leading species, the average age of all preferred and acceptable well-spaced sample trees. • Free growing surveys: for the leading species, the average age of all preferred and acceptable free growing sample trees.
Average Species Height	<ul style="list-style-type: none"> • Stocking surveys: for the leading species, the average height of all preferred and acceptable well-spaced sample trees. • Free growing surveys: for the leading species, the average height of all preferred and acceptable free growing sample trees.
Damage Agent	Required where stand has been damaged.
% Incidence of Damage Agent	Required if damage agent present.
Area Affected by Damage Agent	Required if damage agent present.

10.3 MULTI-LAYER STANDS DATA REQUIREMENTS

These specifications apply to forest stands that have more than one layer. Four layers are recognized (Table 15): mature, pole, sapling, and regeneration. Please refer to Table 13 and Table 14 above for multi-layer stands data requirement.

Table 15. Forest Cover

Layer	Description	Details
1	Mature Layer – uneven-aged	Uneven-aged stand with trees ≥ 12.5 cm dbh – based on all commercial trees.
2	Pole Layer – uneven-aged	Uneven-aged stand with trees 7.5 cm to 12.49 cm dbh – based on all commercial trees.
3	Sapling Layer – uneven-aged	Uneven-aged stand with trees 1.3 m in height to 7.49 cm dbh – based on all commercial trees.
4	Regeneration Layer – uneven-aged	Uneven-aged stand with trees < 1.3 m in height – based on all commercial trees.

Inventory component data is mandatory for multi-layer stands. When reporting uneven-aged inventory and silviculture component, data may be combined into the inventory component report if no significant differences exist between species composition in the silviculture (crop trees) and inventory (all trees) components; that is, if the stand inventory consists almost entirely of preferred and acceptable crop trees.

For reserves, follow procedures for [Submitting Forest Cover to RESULTS for Openings with Treed Retention](#).

General information on multi-layer stands is in the [RISS-Is](#) or the [Silvicultural Systems Handbook for British Columbia](#) website.

10.4 ROADS

Permanent and temporary access structure (and other temporary structures such as landings) should preferably be reported as non-mapped areas:

- 1) Permanent Access Structure: as (NP-RD)
- 2) Temporary Access Structures; as (NP-UNN)

***Note: the stocking status of the temporary access structure may change from unproductive (NP-UNN) to NSR or IMM through the lifecycle of the opening as the road becomes rehabilitated and trees re-established.**

11. DECLARATION SUBMISSION

Declarations for openings subject to government funded treatments or surveys are the same as for licence holders. Follow procedures for submitting declarations according to the [RISS-Is](#).

If an area is declared stocked or free growing but does not meet the stocking standards in the given SSID because of Return on Investment (ROI) criteria or a decision that further treatment will not be done, a comment is added to the declaration stating that no further treatments are planned because of the ROI decision process.

Fields in Table 16 are required with declaration submissions. Declaration fields not listed in the table are optional. Forest cover and spatial submissions must accompany declaration submissions. Submit completed declarations online in RESULTS or through the ESF. Forest cover updates are submitted through the ESF. Attachments of supporting documentation are submitted online in RESULTS.

Table 16. Declaration Data Requirements

Field	Details
SU	Standards Unit ID to which the declaration relates.
Declaration type	Enter appropriate code: RG = Regeneration FG = Free Growing
Declared date	YYYY-MM-DD (not necessarily the same as submission date)
Comment	Include the name of the Registered Professional Forester who supervised the professional field assessments that support the declaration. Add comments as necessary to explain the declaration or to satisfy contractual requirements.

12. GUIDANCE FOR MANAGING LARGE DISTURBANCE AREAS (WILDFIRE & PEST)

Wildfire and pest disturbances on Crown land are considered for treatment under various Government funded programs. These types of disturbances can impact large areas that have potential for treatment, however, not all portions of the area will be suitable for treatment with Government funded silviculture activities.

Treatable areas and areas not suitable for treatment that have been surveyed are reported **separately** to RESULTS. As well, areas that will be treated with Government funded silviculture activities must be reported to RESULTS in manageable sized openings and openings should be under **200 ha** in size.

12.1 LARGE DISTURBANCE AREAS NOT SUITABLE FOR TREATMENT

“Suitability” will be defined through surveys and in discussions with local Ministry Designated Representatives and may include operability, impact of disturbance, sufficient return-on-investment, as well as other silviculture funding criteria.

Shell openings created for areas determined to not be suitable for treatment can cover a large area that is not contiguous. Opening Spatial and Forest Cover are **NOT** provided. Activity spatial is required for all completed activities. These openings allow for the tracking of areas considered for treatment and avoid having an area assessed multiple times.

Table 17. Data Requirements for Large Disturbance Areas Reviewed but NOT Suitable for Treatment

Field	Details
Opening Definition (shell openings only)	Create new shell opening. New Opening will create Opening ID that will be used as the key for reporting by ESF.
Opening Category	NREQ
Opening ID	Automatically generated by RESULTS upon creation of shell opening
Opening Gross Area	0.1 ha (do not use total area surveyed)
Approval Date	Use the date of the wildfire disturbance
Spatial	DO NOT submit any opening spatial
Stocking Standards Data Requirements	Not required
Disturbance Reporting	Not required
Completed Survey	
Base	SU All FFT and FCI funded silviculture activities must be reported using the codes provided in the following published guidance document: FFT and FCI Base/Technique/Method Valid Code List
Technique	RE (Reconnaissance) RG (Regen/Stocking) RA (Regen Performance Assessment) FG (Free Growing) Or other appropriate code relevant to program requirement
Method	PLOT WALK FILE Or other appropriate code relevant to program requirement.

Field	Details
Completion Date	YYYY-MM-DD (date of survey completion)
Funding Source	Enter applicable funding source code (Table 2)
Cost	Actual cost is mandatory for FCE, FCM, FTL, FTM, or FES funding sources
Net Area Treated	Total area surveyed and is not suitable for treatment
Inter-agency No.	FFT project number listed in FIRS or Ministry generated number (FFT or FCI) (Sec. 6.2.3) or FESBC project plan number listed in FESIMS. Required for completed projects under an FFT, FCI or FESBC project. WRR projects numbers generated by Ministry.
Activity Spatial	Mandatory *Roads and landings are not mapped, only the outer boundaries are to be submitted
Comments or Attachments	Attach details regarding survey If the surveyed area deemed not suitable, please add a comment indicating “Not suitable” and any details pertaining the decision.
Forest Cover Submission	DO NOT provide Forest Cover

12.2 LARGE DISTURBANCE AREAS SUITABLE FOR TREATMENT

Areas within large disturbances that are considered suitable for treatment are reported to RESULTS in manageable size openings that should be under 200 ha. If an area that will be treated is larger than 200 ha, it is recommended that the area be divided into separate openings that follow ecological units or natural landforms. This is recommended to ensure the integrity of the forest cover throughout the lifecycle of the opening.

Table 18. Data Requirements for Large Disturbance Areas Suitable for Treatment

Field	Details
Opening Definition (shell openings only)	Create new shell opening and report using Section 6.4.2.1, Table 1, Section 7, Section 9, and Section 10 with changes below. See Sections 21 and 22 for specific requirements for treatments completed by FESBC and the Forest Carbon Initiative.
Opening Category	NDFS
Opening Gross Area	The gross area that will be treated
Approval Date	Use the date of the wildfire disturbance
Spatial	Submit opening definition spatial
Stocking Standards Data Requirements	Required
Disturbance Reporting	DN B for wildfire DN P for pest disturbance
Completed Treatments	
Base	For complete list of valid codes and associated descriptions please refer to the code tables on RESULTS online technical specification. http://www.for.gov.bc.ca/his/results/webhelp/index.htm All FFT and FCI funded silviculture activities must be reported using the codes provided in the following published guidance document: FFT and FCI Base/Technique/Method Valid Code List
Technique	
Method	
Completion Date	YYYY-MM-DD (date of survey or treatment completion)
Funding Source	Enter applicable funding source code (Table 2)
Cost	Actual cost is mandatory for FCE, FCM, FTL, FTM, or FES funding sources
Net Area Treated	Total area treated
Inter-agency No.	FFT project number listed in FIRS or Ministry generated number (FFT or FCI) (Sec. 6.2.3) or FESBC project plan number listed in FESIMS. Required for completed projects under an FFT, FCI or FESBC project.

Government Funded Silviculture Activities – Version 7C

Field	Details
Activity Spatial	Mandatory for all programs unless otherwise specified. *Roads and landings are not mapped, only the outer boundaries are to be submitted
Comments or Attachments	Attach details regarding completed treatment
Planned Activities	<p>Include all planned activities to FG, using the funding source code FCM or FTM. Required for all openings planted with FCM, FCE, FTL or FTM funded seedlings.</p> <p>All FFT and FCI funded silviculture activities must be reported using the codes provided in the following published guidance document: FFT and FCI Base/Technique/Method Valid Code List</p>
Activity Spatial	Mandatory for all programs unless otherwise specified. *Roads and landings are not mapped, only the outer boundaries are to be submitted
Forest Cover Submission	Forest Cover updates, both spatial and attribute, are mandatory for completed field-based activities including surveys. *Roads and landings are not mapped, only the outer boundaries are to be submitted

13. AERIAL FERTILIZATION

The provincial government funds extensive fertilization of stands with good growth potential, to supplement anticipated timber supply shortfalls in some timber supply areas. FESBC and FCI may also fund fertilization to increase growth rates and sequester atmospheric carbon at an improved rate. These treatments are mapped and tracked to monitor the investments. Assessed fertilization areas, future planned fertilization areas, and other required documents (e.g., prescriptions, survey documentation and treatment prescriptions, ROI calculations, foliar assessments, monitoring plot data.) must be submitted as attachments to the opening.

13.1 REPORTING BY EXISTING VERSUS ‘SHELL’ OPENINGS

A fertilization treatment may overlap existing openings (Figure 1). Two reporting options may be considered: 1) Report to individual existing openings - applicable to licensee administered fertilization programs; or, 2) Create a ‘shell’ opening that overlaps multiple existing tenured openings (preferred method).

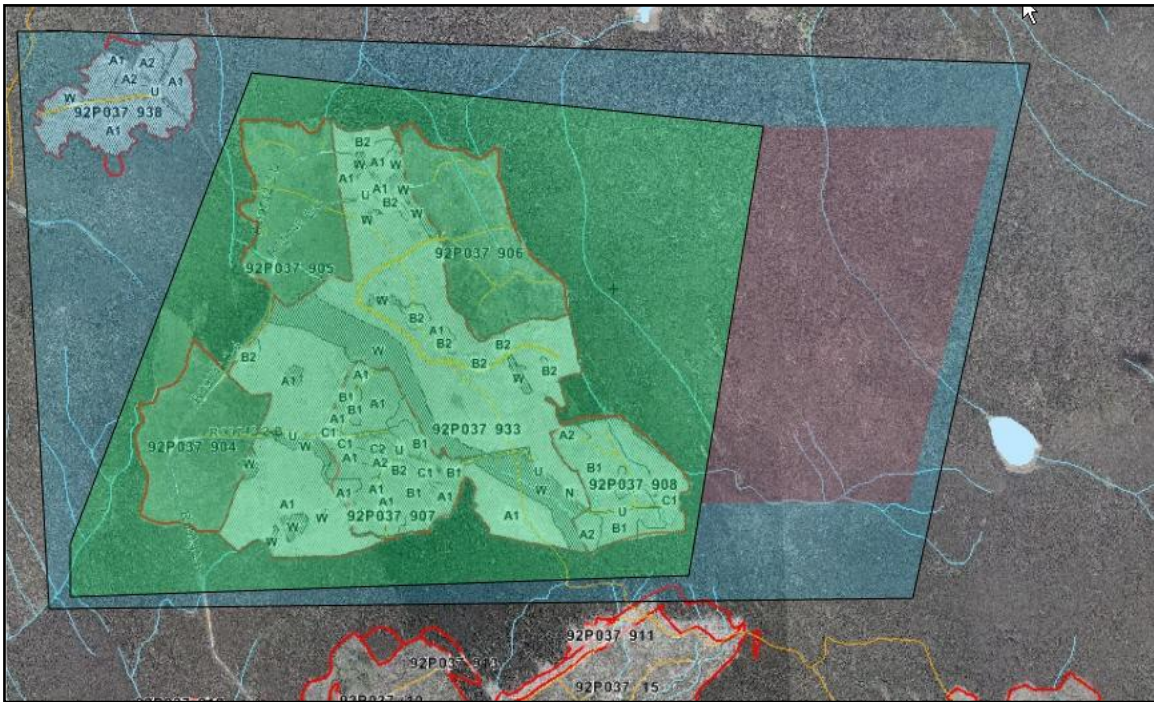


Figure 1. Fertilization Treatment Overlapping Existing Openings

Option 1: Existing Individual Opening (Licensees Only)

Reporting by individual openings allows specific treatments to be tracked within each opening so that full historical context is retained within the individual opening records. This method can only be used for licensee fertilization activities within an existing opening and the treatment must be fully contained within the opening.

Option 2: New ‘Shell’ Openings

Reporting by a ‘shell’ opening allows for complete coverage of the entire assessed, treated, control, and planned area in one record. This method may simplify reporting because only fertilization related work, activity information and maps are submitted, and RESULTS allows

for submission of multi-part polygons. A shell opening should fit within a resolution unit such as by drainage or landscape unit so that the areas can be reviewed using existing MFOR map viewing tools (e.g., Mapview or iMap). A shell opening must not be in more than one TSA.

Please note that when reporting fertilization activities using a shell opening, the opening gross area supplied is always 0.1 ha and opening spatial must NOT be submitted.

***Note: to avoid creating orphan records, when reporting previously planned activities, please ensure the planned records and associated attributes are updated to complete.**

13.2 FERTILIZATION ACTIVITY DATA REQUIREMENTS

Fields in Table 19 are required with fertilization treatment activity submissions to RESULTS. Additional information may be required by some districts.

Table 19. Aerial Fertilization Data Requirements

Field	Details
Opening Definition (shell openings only)	New Opening will create Opening ID that will be used as the key for reporting online by ESF.
Mapsheet Number	Optional – Most districts are on auto-generate
Opening ID	Automatically generated by RESULTS upon submission.
Opening Category	NREQ (Areas where SP/SMP not required)
Opening Gross Area	Opening gross area must be set to 0.1 ha to be used for fertilization activities and do NOT supply opening spatial .
Approval Date	Fertilization application date or date of pre-treatment assessment (YYYY-MM-DD)
Opening Status	IDIR Users: Set to 'FG' BCeID Users: Set to 'APP' and contact district RESULTS Coordinator with request to reset Opening Status to 'FG'.
TSB (Timber Supply Block)	Select as appropriate to assist with reporting.
Survey Activity (pre-treatment)	<i>Fertilizer Pre-treatment Assessment with map</i>
Base	SU (Survey) All FFT and FCI funded silviculture activities must be reported using the codes provided in the following published guidance document: FFT and FCI Base/Technique/Method Valid Code List
Technique	FE (Fertilization)
Method	PHOTO (Air Photo Interpretation) PLOT (Plots) WALK (Walkthrough) HELI (Helicopter)
Objective	FE (Fertilization)
Funding Source	Select appropriate funding source code (Table 2).
Completion Date	YYYY-MM-DD
Area Treated	Total surveyed area reviewed for fertilization treatment.
Actual Cost	Actual cost is mandatory for FCE, FCM, FTL or FTM funding source

Government Funded Silviculture Activities – Version 7C

Field	Details
Inter-agency No	FFT project number listed in FIRS or Ministry generated number (FFT or FCI) (Sec. 6.2.3) or FESBC project plan number listed in FESIMS. Required for completed projects under an FFT, FCI or FESBC project. Inter-agency numbers beginning with FC, HB, RB, or FR are reserved for FESBC contracts.
Activity Spatial (GML)	Supply GML exterior outline of assessed area. *Roads and landings are not mapped, only the outer boundaries are to be submitted
Comments or Attachments	Attach details regarding survey assessments as required by the program such as: GPS, any treatment prescriptions or foliar analysis reports, etc.
Planned Treatment Activity	<i>Immediate or Future Planned Fertilization Treatment (enter fertilization treatment if treatment is expected to be done within three years and a stand management prescription exists). If stands are suitable for fertilization but treatment will occur after three years, then indicate a follow-up survey for fertilization. Re-treatments do not need to be planned for as these areas will be based on areas previously treated.</i>
Base	FE (Fertilization) All FFT and FCI funded silviculture activities must be reported using the codes provided in the following published guidance document: FFT and FCI Base/Technique/Method Valid Code List
Technique	CA (Chemical Air) or CG (Chemical Ground)
Method	FIXED (Fixed Wing) or HELI (Helicopter) for aerial. BPACK (Backpack Application), GRANU (granular application) or VMSGH (Vehicle Mount Sprayer (Gun and Hose) for ground.
Objective	FE (Fertilization)
Funding Source	Select appropriate funding source code (Table 2).
Planned Date	YYYY-MM-DD
Planned Area	Total planned eligible fertilization treatable area(s).
Planned Cost	Total estimated planned cost (\$). Use current local costs or estimates provided by funding program.
Activity Status Indicator (RESULTS)	Set status to 'Planned'. (<i>Note: Some ESF submission software has an 'Actual Date Indicator' instead of an Activity Status indicator. In this case, for activity completion data, set Actual Date Indicator to 'no'.</i>)
Inter-agency No	Not applicable for planned activities.
Activity Spatial (GML)	Supply GML exterior location(s) for planned eligible fertilization treatment area. *Roads and landings are not mapped, only the outer boundaries are to be submitted
Comments or Attachments	Attach details regarding future fertilization stands including differences noted in species composition from current inventory leading species, stand management prescription, and GPS of treatment area.
Completed Treatment Activity	<i>Completed Aerial Fertilizer Treatment</i>
Base	FE (Fertilization) All FFT and FCI funded silviculture activities must be reported using the codes provided in the following published guidance document: FFT and FCI Base/Technique/Method Valid Code List
Technique	CA (chemical Air)
Method	FIXED (Fixed Wing) or HELI (Helicopter)
Funding Source	Select appropriate funding source code (Table 2).
Completion Date	YYYY-MM-DD
Area Treated	Total fertilization coverage area in hectares.
Treatment Cost	Actual cost is mandatory for FCE, FCM, FTL or FTM funding source

Government Funded Silviculture Activities – Version 7C

Field	Details
Inter-Agency No	FFT project number listed in FIRS or Ministry generated number (FFT or FCI) (Sec. 6.2.3) or FESBC project plan number listed in FESIMS. Required for completed projects under an FFT, FCI or FESBC project. Inter-agency numbers beginning with FC, HB, RB, or FR are reserved for FESBC contracts.
Activity Spatial (GML)	GML exterior outline of coverage required. Internal swath linework not required. *Roads and landings are not mapped, only the outer boundaries are to be submitted
Comments or Attachments	Attach treatment prescription including details regarding type/concentration of fertilizer applied, GPS, monitoring plot data etc.
Completed Treatment Activity	<i>Completed Ground-based Fertilizer Treatment (excluding at-time-of-planting fertilizers)</i>
Base	FE (Fertilization) All FFT and FCI funded silviculture activities must be reported using the codes provided in the following published guidance document: FFT and FCI Base/Technique/Method Valid Code List
Technique	CG (Chemical Ground)
Method	BPACK (Backpack Application) GRANU (Granular Application) VMSGH (Vehicle Mount Sprayer (Gun and Hose))
Objective	FE (Fertilization)
Funding Source	Select appropriate funding source code (Table 2).
Completion Date	YYYY-MM-DD
Area Treated	Total fertilization coverage area in hectares.
Treatment Cost	Actual cost is mandatory for FCE, FCM, FTL or FTM funding source
Inter-agency No	FFT project number listed in FIRS or Ministry generated number (FFT or FCI) (Sec. 6.2.3) or FESBC project plan number listed in FESIMS. Required for completed projects under an FFT, FCI or FESBC project. Inter-agency numbers beginning with FC, HB, RB, or FR are reserved for FESBC contracts.
Activity Spatial (GML)	Supply GML exterior outline of ground fertilized area. *Roads and landings are not mapped, only the outer boundaries are to be submitted
Comments or Attachments	Can attach details regarding type/concentration of fertilizer applied, GPS, etc.
Survey Activity (post-treatment)	<i>Fertilizer Post-treatment Assessment with map (separate ATUs designated for treated and control areas)</i>
Base	SU (Survey) or AU (Audit) – as relevant All FFT and FCI funded silviculture activities must be reported using the codes provided in the following published guidance document: FFT and FCI Base/Technique/Method Valid Code List
Technique	FE (Fertilization)
Method	PLOT (Presently, only plot monitoring is funded by the Ministry) <i>PHOTO (Air Photo Interpretation)</i> <i>WALK (Walkthrough)</i> <i>HELI (Helicopter)</i>
Objective	FE (Fertilization)
Funding Source	Enter applicable funding source code (Table 2).
Completion Date	YYYY-MM-DD
Area Treated	Total surveyed area monitored for fertilization treatment (control areas and plots)
Treatment Cost	Actual cost is mandatory for FCE, FCM, FTL or FTM funding source

Government Funded Silviculture Activities – Version 7C

Field	Details
Inter-agency No	FFT project number listed in FIRS or Ministry generated number (FFT or FCI) (Sec. 6.2.3) or FESBC project plan number listed in FESIMS. Required for completed projects under an FFT, FCI or FESBC project. Inter-agency numbers beginning with FC, HB, RB, or FR are reserved for FESBC contracts.
Activity Spatial (GML)	Supply GML exterior outline of surveyed area (areas within which plots are located, including control areas). Separate ATU for control and treated areas. *Roads and landings are not mapped, only the outer boundaries are to be submitted
Comments or Attachments	Attach details regarding survey assessments, survey data, detailed plot locations, GPS etc.
Standards Unit	
n/a	Not required. ‘NREQ’ opening category removes requirement for SU information.
Forest Cover	
n/a	Not required. Spatial ATU maps provide for identification of these areas.

13.3 SUPPORTING DOCUMENTATION FOR AERIAL FERTILIZATION PROJECTS

RESULTS attachment option allows submitters to attach project documentation associated with the treatment, pre-treatment assessment activity reports, or post-treatment monitoring assessment report, and foliar analysis.

14. JUVENILE SPACING

The Provincial Government funds stand tending activities to optimize fibre and timber supply on stands that have been declared free growing or have no licensee obligation. All aspects of a juvenile spacing program (initial pre-treatment project area assessments, treatment records, and post-treatment monitoring) are submitted to RESULTS. Submissions data requirements are listed in Table 20. All opening submissions for juvenile spacing activities must have sufficient information to describe the treatment event and to determine impacts on higher level plans, silviculture, forest cover/land status, land use decisions and other local issues that may be impacted by those activities. Figure 2 shows the workflow associated with juvenile spacing activities.

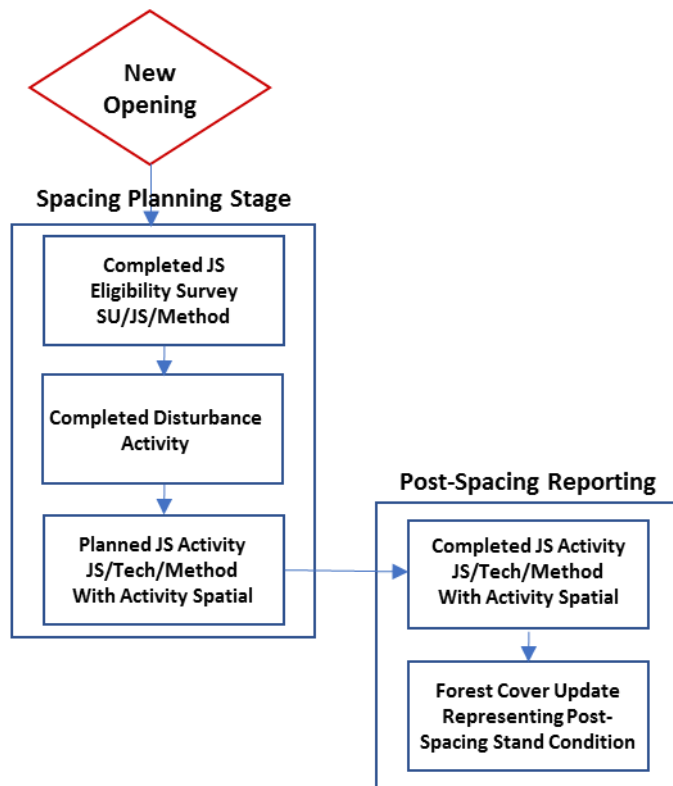


Figure 2. Juvenile Spacing Treatment Workflow

14.1 REPORTING BY ‘SHELL’ OPENINGS

Juvenile spacing activities are reported as ‘shell’ openings on free growing (non-obligation) areas. Using shell openings allow for reporting of an entire surveyed, planned, and treated area in one single opening. **Please note that when using a shell opening for juvenile spacing, opening spatial is mandatory.**

Licensees who are carrying out juvenile spacing on tenured openings may report the activity to their existing openings to maintain the full history of the opening. In that case, skip the Opening Definition and Disturbance activity in Table 20 below.

All ‘shell’ openings must be initiated via RESULTS online to generate an opening ID. At a minimum, the opening category, opening gross area and the approval date must be supplied for the opening to be saved successfully. The opening ID is later used as a ‘key’ for future ESF submissions. Once the online portion is completed, you must submit an opening definition via ESF to supply the opening spatial. The opening definition data requirements are provided in Table 20. All subsequent submissions must be done via ESF as activity spatial and/or forest cover updates are mandatory for juvenile spacing activities. The data requirements for all other activities are also provided in Table 20.

14.2 JUVENILE SPACING ACTIVITY DATA REQUIREMENTS

Fields in Table 20 are required with juvenile spacing treatment activity submissions to RESULTS. Sections 10.2 and 10.3 outline data requirements for forest cover submissions for both even-aged and multi-layer stands.

Table 20. Juvenile Spacing Data Requirements

Field	Details
Opening Definition (shell openings only)	New Opening initiated online will generate an Opening ID that will be used as the key for ESF reporting.
Mapsheet Number	
Opening ID	Automatically generated by RESULTS upon submission.
Opening Category	NREQ (Areas where SP/SMP not required)
Opening Gross Area	Must equal treatment area
Approval Date	Approval Date = date of initial spacing eligibility survey (YYYY-MM-DD)
Opening Status	IDIR Users: Set to ‘FG’ BCeID Users: Set to ‘APP’ and contact district RESULTS Coordinator with request to reset Opening Status to ‘FG’.
TSB (Timber Supply Block)	Select as appropriate to assist with reporting.
Spatial	Spatial data representing treatment area. *Roads and landings are not mapped, only the outer boundaries are to be submitted
Disturbance Activity	Mandatory to allow Forest Cover updates
Silviculture System	Leave Blank
Silviculture Variant	Leave Blank
Silviculture Cut Phase	Leave Blank
Disturbance Code	E (Stand Enhancement)
Disturbance Start Date	Set to date of eligibility survey
Disturbance End Date	YYYY-MM-DD
Disturbance Area	Always use 0.1 ha

Government Funded Silviculture Activities – Version 7C

Field	Details
Eligibility Survey Activity (pre-treatment)	<i>Juvenile Spacing Eligibility Survey</i>
Base	SU (Survey) All FFT and FCI funded silviculture activities must be reported using the codes provided in the following published guidance document: FFT and FCI Base/Technique/Method Valid Code List
Technique	JS (Juvenile Spacing)
Method	PHOTO (Air Photo Interpretation) PLOT (Plots) WALK (Walkthrough) HELI (Helicopter)
Objective	JS (Juvenile Spacing)
Funding Source	Select appropriate funding source code (Table 2).
Completion Date	YYYY-MM-DD
Area Treated	Total surveyed area reviewed for juvenile spacing treatment
Treatment Cost	Actual cost of completed treatment
Inter-agency No	FFT project number listed in FIRS or Ministry generated number (Sec. 6.2.3) or FESBC project plan number listed in FESIMS. Required for completed projects under an FFT or FESBC project. Inter-agency numbers beginning with FC, HB, RB, or FR are reserved for FESBC contracts.
Activity Spatial (GML)	Mandatory - Supply GML exterior outline of surveyed area. *Roads and landings are not mapped, only the outer boundaries are to be submitted
Comments or Attachments	Attach details regarding survey assessment for both areas suitable for spacing and areas not suitable for treatment, GPS coordinates, stand management prescription or treatment plan, etc. Attachment file size limit is 1 MB.
Forest Cover	
Conditional	Forest Cover updates are required for all ground surveys unless (a) no treatment is recommended or (b) there is a current (within the last 5 years) FG survey forest cover inventory label in RESULTS that still best describes the stand attributes. See Pre-stand Tending Survey and Prescription Development Standard Section 3.10 .
Planned Treatment Activity	<i>Immediate or Future Planned Juvenile Spacing Treatment or additional treatment as identified in the stand management prescription (e.g., pruning). If stands are suitable for Juvenile Spacing but treatment will occur after more than three years, then indicate a follow-up survey for spacing.</i>
Base	JS (Juvenile Spacing) All FFT and FCI funded silviculture activities must be reported using the codes provided in the following published guidance document: FFT and FCI Base/Technique/Method Valid Code List
Technique	MA (Manual)
Method	MANCT (Manual Cutting) POWER (Power Saw)
Objective	JS (Juvenile Spacing)
Funding Source	Select appropriate funding source code (Table 2).
Planned Date	YYYY-MM-DD
Planned Area	Total planned eligible juvenile spacing treatable area(s)
Planned Cost	Total estimated planned cost (\$). Use current local costs or estimates provided by funding program.
Inter-agency No	Not required for planned activities
Activity Spatial (GML)	Mandatory - Supply GML exterior location(s) planned eligible juvenile spacing treatment or additional treatment area. *Roads and landings are not mapped, only the outer boundaries are to be submitted

Government Funded Silviculture Activities – Version 7C

Field	Details
Comments or Attachments	Attach details regarding future juvenile spacing stands including, differences noted in species composition from current inventory leading species, GPS coordinates, and stand management prescription or treatment plan. Attachment file size limit is 1 MB
Forest Cover	
Optional	Only if complete forest cover data is collected.
Completed Treatment Activity	<i>Completed Juvenile Spacing Treatment</i>
Base	JS (Juvenile Spacing) All FFT and FCI funded silviculture activities must be reported using the codes provided in the following published guidance document: FFT and FCI Base/Technique/Method Valid Code List
Technique	MA (Manual)
Method	MANCT (Manual Cutting) POWER (Power Saw, Brush Saw)
Objective	JS (Juvenile Spacing)
Funding Source	Select appropriate funding source code (Table 2).
Completion Date	YYYY-MM-DD
Area Treated	Total spaced area in hectares
Treatment Cost	Actual cost of completed treatment
Inter-agency No	FFT project number listed in FIRS or Ministry generated number (Section. 6.2.3) or FESBC project plan number listed in FESIMS. Required for completed projects under an FFT or FESBC project. Inter-agency numbers beginning with FC, HB, RB, or FR are reserved for FESBC contracts.
Activity Spatial (GML)	Supply GML exterior outline of treated area. *Roads and landings are not mapped, only the outer boundaries are to be submitted
Comments or Attachments	Must attach treatment prescription as well as any other details required by the treatment standard. Attachment file size limit is 1 Megabyte.
Forest Cover	Mandatory. This must include the entire opening including untreated areas where a licensee is reporting to an existing opening.
Survey Activity (post-treatment)	<i>Juvenile Spacing Post-Treatment Assessment with map</i>
Base	SU (Survey) or AU (Audit) – as relevant All FFT and FCI funded silviculture activities must be reported using the codes provided in the following published guidance document: FFT and FCI Base/Technique/Method Valid Code List
Technique	JS (Juvenile Spacing)
Method	PHOTO (Air Photo Interpretation) PLOT (Plots) WALK (Walkthrough) HELI (Helicopter)
Objective	JS (Juvenile Spacing)
Funding Source	Select appropriate funding source code (Table 2).
Completion Date	YYYY-MM-DD
Area Treated	Total surveyed area monitored for juvenile spacing treatment (control areas and plots)
Actual Cost	Required for FTM or FTL funding source
Inter-agency No	FFT project number listed in FIRS or Ministry generated number (Section 6.2.3) or FESBC project plan number listed in FESIMS. Required for completed projects under an FFT or FESBC project. Inter-agency numbers beginning with FC, HB, RB, or FR are reserved for FESBC contracts.

Field	Details
Activity Spatial (GML)	Supply GML exterior outline of assessment area (areas within which plots are located, including control areas). Separate ATU for control and treated areas. *Roads and landings are not mapped, only the outer boundaries are to be submitted
Comments or Attachments	Attach details regarding survey assessments, survey data, detailed plot locations, GPS, etc. Attachment file size limit is 1 MB
Standards Unit	
n/a	Not required
Forest Cover	Mandatory

15. PRUNING

Pruning activities on stands that have not been fertilized or spaced are reported to shell openings as outlined in Table 21 and Table 22. Pruning activities on stands that were previously fertilized or spaced are added to existing shell openings using the data requirements shown in Table 22. Forest cover submissions are not required for pruning activities.

Licensees who are carrying out pruning activities on tenured openings may report the activity to their existing openings to maintain the full history of the opening. In that case, use the data requirements in Table 21 to report the activity.

Table 21. Pruning Data Requirements: Not Previously Fertilized or Spaced

Field	Details
Opening Definition (shell openings only)	New Opening initiated online will generate an Opening ID that can be used as the key for ESF reporting.
Opening ID	Automatically generated by RESULTS upon submission.
Opening Category	NREQ (Areas where SP/SMP not required)
Opening Gross Area	0.1 ha
Approval Date	Date of pruning activity (YYYY-MM-DD)
Spatial	Not required. Do not submit opening spatial.
Opening Status	IDIR Users: Set to 'FG' BCeID Users: Request that the district RESULTS coordinator reset the opening status to 'FG'

Table 22. All Pruning Activities Data Requirements

Field	Details
Stocking Standards	Not required
Disturbance Activity	Not required
Completed Activity	
Base	PR (Pruning) All FFT and FCI funded silviculture activities must be reported using the codes provided in the following published guidance document: FFT and FCI Base/Technique/Method Valid Code List
Funding Source	Select appropriate funding source code (Table 2).
Completion Date	YYYY-MM-DD
Area Treated	Total area treated
Actual Cost	Actual cost of completed treatment

Inter-agency No	FFT project number listed in FIRS or Ministry generated number (FFT or FCI) (Sec. 6.2.3) or FESBC project plan number listed in FESIMS, or Wildfire Risk Reduction projects numbers generated by Ministry. Required for completed projects under an FFT, FCI, Wildfire Risk Reduction or FESBC project.
Activity Spatial (GML)	Mandatory - Supply GML exterior outline of pruned area. *Roads and landings are not mapped, only the outer boundaries are to be submitted
Forest Cover	Not required. Do not submit forest cover.

16. FOREST HEALTH SURVEYS

Forest health reconnaissance surveys often cover large areas from which potential candidate areas are identified for more detailed ground surveys where plots are established. It is important to record both levels of surveys in RESULTS as both a record of work accomplished and as a spatial record of the areas surveyed. Please note that the reporting standards between the two levels of forest health surveys are different. Where aerial surveys recommend no treatment, the survey activity is not reported to RESULTS.

Ground surveys that are planned from the original reconnaissance but are not completed within a fiscal year should be kept in the reconnaissance opening. A shell opening for the ground survey is created when the survey is completed, and the planned activity is deleted from the reconnaissance opening.

16.1 FOREST HEALTH SURVEYS, NO PLOTS ESTABLISHED (AERIAL, LINE, WALKTHROUGH, PHOTO INTERPRETATION)

Reporting requirements for reconnaissance surveys or forest health monitoring surveys with no plots established are shown in Table 23. Spatial for survey activities must be submitted through the ESF. It is important that aerial surveys be reported by landscape unit or TSA to provide broad activity spatial for each project. Openings should not cover multiple TSAs.

Table 23. Forest Health Surveys Data Requirements: No Plots Established

Field	Details
Opening Definition (shell openings only)	New Opening initiated online will generate an Opening ID that can be used as the key for ESF reporting
Opening ID	Automatically generated by RESULTS upon submission
Opening Category	NREQ (Areas where SP/SMP not required)
Opening Gross Area	0.1 ha
Approval Date	Date of survey (YYYY-MM-DD)
Spatial	Not required. Do not submit opening spatial.
Opening Status	Where a forest health survey is done on a FG stand, after the new opening is created: IDIR Users: Set opening status to 'FG' BCeID Users: Request that the district RESULTS coordinator reset the opening status to 'FG'.
Stocking Standards	Not required

Government Funded Silviculture Activities – Version 7C

Field	Details
Disturbance Activity	Not required
Completed Survey	<i>Forest Health Survey (no ground plots established)</i>
Base	SU (Survey) All FFT and FCI funded silviculture activities must be reported using the codes provided in the following published guidance document: FFT and FCI Base/Technique/Method Valid Code List
Technique	RE (reconnaissance) FH (forest health)
Method	FIXED HELI LINE PHOTO WALK
Objective	FH MON Or other appropriate codes relevant to the work conducted.
Funding Source	Select appropriate funding source code (Table 2).
Completion Date	YYYY-MM-DD
Area Treated	Total area surveyed, in hectares
Actual Cost	Actual cost is mandatory for FCE, FCM, FTL or FTM funding source
Inter-agency No	FFT project number listed in FIRS or Ministry generated number (Sec. 6.2.3) or FESBC project plan number listed in FESIMS. Required for completed projects under an FFT or FESBC project. Inter-agency numbers beginning with FC, HB, RB, or FR are reserved for FESBC contracts.
Activity Spatial (GML)	Mandatory - Supply GML exterior outline of surveyed area. This may be a multi-part polygon and may be for the entire area surveyed under a contract within a district. *Roads and landings are not mapped, only the outer boundaries are to be submitted
Attachments	Attachments relevant to the project. For aerial surveys, do <u>not</u> include any photos or maps with orthophotos. Provide an overview PDF map that clearly identifies each stratum in the opening. Zip summaries together if required to limit the number of attachments and name them so they may be easily referenced to the overview map.
Forest Cover	Do NOT submit forest cover.
Planned Surveys	Surveys planned for subsequent fiscal years. It is recommended that planned treatments be reported individually allowing a link with the attached reports. These will be deleted as the surveys are completed and reported to new openings. If the boundaries for the reconnaissance survey (no plots) and a subsequent ground survey (with plots) are the same, submit an activity for each survey but use the opening definition data requirements in Section 7.1 for the shell opening.
Licensee Activity ID	Use the file name from the corresponding attachment.
Base	SU All FFT and FCI funded silviculture activities must be reported using the codes provided in the following published guidance document: FFT and FCI Base/Technique/Method Valid Code List
Technique	FH RG

Government Funded Silviculture Activities – Version 7C

Field	Details
	Other appropriate techniques relevant to the survey.
Method	PLOT MULTI
Activity Status Indicator	Set status to ‘Planned’. <i>(Note: Some ESF submission software has an ‘Actual Date Indicator’ instead of an Activity Status indicator. In this case, for planned data, set Actual Date Indicator to ‘no’.)</i>
Planned Date	YYYY-MM-DD
Funding Source Code	Select appropriate funding source code (Table 2).
Net area treated	Planned survey area, ha

16.2 FOREST HEALTH SURVEYS WITH PLOTS ESTABLISHED

Forest health surveys where plots were established are also reported to shell openings. New openings should be logical geographic units within a single TSA that will be treated on a similar schedule. New forest cover must be provided for the entire opening. Polygons that are free growing and/or untreated will have a unique standards unit so that a FG milestone may be declared.

If the boundaries for the reconnaissance survey (Section 15.1) and a subsequent ground survey are the same, submit an activity for each survey but use the opening definition data requirements below for the shell opening.

If the only future treatment is fertilization and associated surveys, report to the standards in Section 13

If any treatments beyond surveys are planned or completed on these openings, the opening category must be updated (NDFS, FFTITSL, FFTFLTC etc.) and the opening managed to the appropriate RISS-gf standards.

Table 24. Forest Health Surveys Data Requirement: Ground Plots

Field	Details
Opening Definition	Create a new shell opening and report using Section 7 to Section 11 with the changes below.
Opening Category	NREQ (Areas where SP/SMP not required). Update as required if ground treatments such as harvest, site preparation, or planting are planned or completed
Opening Gross Area	Equals area surveyed
Approval Date	Date of survey (YYYY-MM-DD)
Spatial	Submit opening spatial for the entire area surveyed
Standards Unit(s) Using SSIDs	If the opening includes any free growing or untreatable areas, make them a separate SU so that a milestone declaration may be made
Early Free Growing Date	In SUs for FG or untreatable areas, use the Correction button to remove the early free growing date, if that field is populated, so that a milestone declaration can be made.

Standards Unit(s) No SSIDs	If the opening includes any free growing or untreatable areas, make them a separate SU so that a milestone declaration may be made
Early Free Growing	In SUs for FG or untreatable areas that will be declared FG immediately, leave this field blank so that a milestone declaration can be made.
Disturbance	
Disturbance Start Date	YYYY-MM-DD. Estimated commencement date of forest health issue.
Disturbance Completion Date	YYYY-MM-DD
Disturbance Area	Area surveyed
Disturbance Code	P (Pest)
Planned Activities	
	If a planned forest health survey was scheduled in an overlapped tenured opening, delete that activity to avoid scheduling overlapping activities.
Completed Survey	
Base	SU All FFT and FCI funded silviculture activities must be reported using the codes provided in the following published guidance document: FFT and FCI Base/Technique/Method Valid Code List
Technique	FH RG Other appropriate techniques relevant to the survey.
Activity Spatial (GML)	Mandatory - Supply GML exterior outline of surveyed area. This may be a multi-part polygon and may be for the entire area surveyed under a contract within a district. *Roads and landings are not mapped, only the outer boundaries are to be submitted
Forest Cover	
	Mandatory Forest cover updates for the entire opening must be submitted through ESF. Forest cover and map submission standards are provided in Section 10.
Milestone	
	If no further work is recommended or if the survey shows the SU area to be free growing, add a free growing milestone declaration.
Remove Early Free Growing Date	See comments in the Standards Unit section above.
Comment	If the area is not free growing and no further work is recommended, add a comment: ‘Based on the FFT survey results (or ROI calculations), no future work is planned.’ For all declarations, include the name of the Registered Professional Forester who supervised the professional field assessments or the no-treatment decision.

17. STAND MONITORING SURVEYS

This process creates new RESULTS openings with opening spatial for Stand Development Monitoring (SDM) or other monitoring surveys except monitoring of carbon openings which will be reported in the relevant opening. The new opening only covers the polygons surveyed and includes a DN activity and a survey activity with spatial. To allow a comparison of previous forest cover to new forest cover for the polygon, the forest cover from the relevant polygon(s) from the original opening with spatial and the SDM survey forest cover with spatial are both reported. The polygon(s) are linked back to the original opening by Licensee

Opening ID and by adding ‘S’ to the mapsheet opening number in the new opening (only where 4 digits are available).

Table 25. Stand Monitoring Surveys Data Requirements

Field	Details
Opening Definition (shell openings only)	Create a new shell opening and report using Section 7 to Section 11 with the changes below.
Mapsheet Number	Use original mapsheet opening number and add ‘S’ suffix (e.g., 103F087-20S)
Licensee Opening ID	Use the original Opening ID for cross-reference with ‘SDM’ prefix (e.g., SDM_62750000)
Opening Category	NREQ (Areas where SP/SMP not required)
Opening Gross Area	Must equal treatment area
Approval Date	Approval Date = date of survey (YYYY-MM-DD)
Opening Status	IDIR Users: Set to ‘FG’ BCeID Users: Set to ‘APP’ and contact district RESULTS Coordinator with request to reset Opening Status to ‘FG’.
Spatial	Spatial data representing surveyed area. *Roads and landings are not mapped, only the outer boundaries are to be submitted
Standards Unit	
n/a	Not required
Disturbance Activity	
Silviculture System	Mandatory to Forest Cover updates CCRES
Silviculture Variant	Leave Blank
Silviculture Cut Phase	REMOV
Disturbance Code	L (Logged)
Disturbance Start Date	Set to date of survey (YYYY-MM-DD)
Disturbance End Date	Set to date of survey (YYYY-MM-DD)
Disturbance Area	Always use 0.1 ha
SDM Survey Activity	
Base	<i>Stand Development Monitoring Survey</i> SU (Survey)
Technique	FH (Forest Health)
Method	SDM (Stand Development Monitoring)
Objective	MON (Monitoring)
Funding Source	Select appropriate funding source code (Table 2).
Completion Date	YYYY-MM-DD
Area Treated	Total area surveyed
Activity Spatial (GML)	Mandatory - Supply GML exterior outline of surveyed area. *Roads and landings are not mapped, only the outer boundaries are to be submitted
Forest Cover	
Mandatory	Mandatory Forest Cover updates: Two forest cover submissions are required: the first submission for the current forest cover for the polygon(s) (from the most recent forest cover in the original RESULTS opening) and the second from the current SDM survey. Note – these submissions must be done on different days due to nightly replication.

18. HABITAT ENHANCEMENT, RESTORATION & CONSERVATION PROGRAM

Habitat enhancement, restoration and conservation activities are reported to RESULTS to track investments and report out on initiatives. Four main project types have been identified including: Ecosystem Restoration, Habitat Enhancement Restoration, Habitat Protection, and Habitat, Wildlife, Fish Species Research. This section provides a standardized reporting framework for these projects. For prescribed broadcast burning activities refer to Section 19 for the data reporting requirements.

A new shell opening will be required for these activities and the new openings must be created online in RESULTS to acquire an Opening ID. Activities that are completed within the same geographical area can be reported to one shell opening.

Table 26. Habitat Enhancement, Restoration and Protection Reporting Requirements

Field	Details
Habitat Enhancement Restoration, Ecosystem Restoration, Habitat Protection, Habitat Species Research	Create a new shell opening and report using Section 7, Section 9, and Section 10 with the changes below. A minimum of two activity objective codes must be provided for all activities. The first objective to add is project type and second is the species or ecosystem being addressed.
Opening Category	NREQ for activities on Crown Land EXCLU for activities on Parks, Protected Areas, Federal Land or Private Land
Approval Date	Date of treatment or approval date of plan
Opening Spatial	Do not provide opening spatial.
Location	Use MFOR Region Admin. Org. Unit to facilitate reporting. See Table 27 below for codes.
Activity Base	For Habitat Installation such as dens or nest boxes use activity code HI. For Species Translocation, when species are being moved to new areas use activity code ST. All other silviculture activity codes apply based on treatment completed.
Activity Technique	For survey (SU) activities additional technique codes available include SH (species health), MO (monitoring), or IN (inventory). All other silviculture activities technique codes apply.
Activity Objective Code 1	Mandatory, Project Type Code required. Refer to Table 28 below for available codes.
Activity Objective Code 2	Mandatory, Species or Ecosystem required. Refer to Table 29 below for available codes.
Activity Objective Code 3	Optional but can be used to capture objectives needed for reporting. For example, if two species are being managed, you may add the secondary species in this field. (Table 29 below for available codes).
Funding Source Code	Mandatory, refer to Table 30 for available codes. Additional funding codes can be utilized if necessary
Activity Cost	Mandatory, enter activity cost.
Activity Spatial	Mandatory, must be provided for all habitat restoration, enhancement, and conservation activities. *Roads and landings are not mapped, only the outer boundaries are to be submitted
Activity Comment Field	This is an optional field that can be used if the project lead wishes to provide further details about their project. Can be used to list minor project components or give details that are not captured by the activity objective codes, or to indicate where detailed project information is stored (other ministry databases for example).

Government Funded Silviculture Activities – Version 7C

Field	Details
Forest Cover	Only required if the forest cover has changed from the existing inventory. Removal or spacing of the understory where the mature canopy was not modified does not require a forest cover submission.

Table 27. MFOR Region Administration Organization Codes

Code	Description
RCB	Cariboo Natural Resource Region
RKB	Kootenay-Boundary Resource Region
RNO	Northeast Natural Resource Region
ROM	Omineca Natural Resource Region
RSC	South Coast Natural Resource Region
RSK	Skeena Natural Resource Region
RTO	Thompson-Okanagan Natural Resource Region
RWC	West Coast Natural Resource Region

All habitat restoration, enhancement or conservation activities must provide two objectives. The primary objectives are listed in Table 28 and the secondary objective listed in Table 29. The secondary objective provides the species or ecosystem being addressed by the activity. A third objective can be added and can be from the full list of silviculture objectives.

Table 28. Habitat enhancement, restoration, and conservation project prime objective categories.

Code	Description	Details
ER	Ecosystem Restoration	Ecosystem Restoration is intended to apply to Land Based Investment Strategy Fund projects for ecosystem restoration, that are administered through the Range Branch.
HER	Habitat Enhancement Restoration	Habitat Enhancement Restoration projects have activities which restore, enhance or conserve habitat for species or ecosystems (excluding activities funded by the Land Based Investment Strategy for Ecosystem Restoration, which are already recorded using the code ER).
HPR	Habitat Protection	Habitat projects that support the conservation and protection of habitat for wildlife species. Applies to all projects that take place within land designations for conservation that have legal protections in place for wildlife and habitat (e.g., activities within conservation lands, parks, and protected areas, WHAs, WMAs).
HSR	Habitat, Wildlife, Fish Species Research	Research projects relating to wildlife or fish species or habitat within British Columbia.

Table 29. Species and Ecosystem Codes

Code	Description	Code	Description
ALP	Alpine Management	MMU	Marbled Murrelet
AMP	Amphibian	MOO	Moose
BIO	Biodiversity	OGF	Old Growth Forest
BTR	Bull Trout	PRY	Birds of Prey
CBU	Caribou	REP	Reptile
ECO	Listed Ecosystems	RH	Rehabilitation
FIS	Fish	RHM	Range Habitat Management
FUR	Fur Bearer	RIP	Riparian Restoration
GB	Grizzly Bear	SBI	Songbird
GOS	Northern Goshawk	SH	Sheep
GRA	Grassland Management	STU	Sturgeon
IVT	Invertebrate	UNG	Ungulate
LPR	Large Carnivore	VM	Vegetation Management
LPS	Listed Species	WET	Wetland Management
MG	Mountain Goat	WHM	Wildlife Habitat Management
MIG	Migratory Bird		

Table 30. Habitat Enhancement, Restoration, and Protection Funding Source Codes

HBF	Habitat Only – Base Funding
HCA	Habitat Only - Natural Resources Canada
HCB	Habitat Only - Columbia Basin Trust
HCR	Habitat Only - Caribou Recovery Fund
HDU	Habitat Only - Ducks Unlimited
HFB	Habitat Only - Fraser Basin Council
HFE	Habitat Only - Federal Government (if not Natural Resources Canada)
HFF	Habitat Only – Freshwater Fisheries Society of BC
HFW	Habitat Only - Fish and Wildlife Compensation Program
HHC	Habitat Only - Habitat Conservation Trust Fund
HLB	Habitat Only - Land Based Investment Strategy
HNC	Habitat Only - Nature Conservancy of Canada
HNF	Habitat Only - Canada Nature Fund
HNT	Habitat Only - Nature Trust
HTW	Habitat Only – Together for Wildlife
CFR	Office of the Chief Forester Research Program funding for research projects that have a wildlife, fisheries, or habitat component.

19. WILDFIRE RISK REDUCTION PROGRAM

This section is used to support reporting of operational treatments, prescribed burning, and surveying of wildfire risk reduction projects at a treatment unit level into RESULTS. This includes wildfire risk reduction projects completed under all funding sources, including but not limited to, BC Wildfire Service, Community Resiliency Program, and FESBC.

Table 31. Wildfire Risk Reduction Data Requirements

Field	Details
Wildfire Risk Reduction Activities - Non-tenured	Create a new shell opening and report using Section 7 to Section 10 with the changes below
Opening Category	NREQ for activities on Crown Land EXCLU for activities in Parks, Protected Areas, Federal Land or Private Land
Approval Date	Date of treatment or approval date of plan
Opening Spatial	Required
Opening Gross Area	Required
Standards	Standards are available in RESULTS under Admin/Standards. Adm Org: HFP and the appropriate zone, subzone, variant, and site series
Activity Base	Mandatory – use applicable code
Activity Technique	Mandatory – use applicable code
Activity Method	Optional – as required or specified by program area
Activity Objectives	Mandatory, FRE (fuel reduction) must be included as the primary objective. Other objectives can be used if needed as secondary or tertiary objectives. *CUB objective is reserved for areas where First Nations cultural burning occurred.
Funding Source Code	WRR, CF or FEP For BC Parks License Plate Program use BCP For non WRR funded projects, additional funding codes can be utilized.
Inter-agency No	<ul style="list-style-type: none"> • WRR Funded Projects - Ministry generated project code. Project code will start with WR, followed by the 2-letter code for the Fire Centre (CO, CA, KA, SE, PG, NW) and then 4 digits (i.e., WRCA0003) • CF Funded Projects – Project code provided by program administrator. Project codes begin with CRI, followed by 2-3 digits • FEP funded projects – Project code provided by program administrator
Activity Spatial	Mandatory, must be provided for all wildfire risk reduction activities. *Roads and landings are not mapped, only the outer boundaries are to be submitted
Denudation	Conditional – if forest cover updates are required, a denudation disturbance activity must be reported. Use the following: <ul style="list-style-type: none"> • Activity base Code: DN (Denudation) • Disturbance Code: E (Enhancement) • Disturbance area: 0.1 ha (arbitrary value to satisfy the denudation activity requirement and to enable forest cover updates)
Forest Cover	Mandatory: All forest cover polygons, including Reserve polygons, must be surveyed (as per wildfire survey standard) and new inventory forest cover reported. Silviculture forest cover information is conditional, if stocking standards exist, must be supplied.
Attachments	Land-based Plan (wildfire risk reduction plan) and other attachments as required by project - Note: if the plan applies to multiple areas, do not attach the document to all reported openings. Only attach once and reference the opening where the attachment is in all subsequent submissions.

Government Funded Silviculture Activities – Version 7C

Field	Details
Wildfire Risk Reduction Activities - Tenured	For openings associated with a tenure
Opening Category	SPEX (include tenure information in opening)
Licence Number	Licence number of the opening corresponding to the cutting authority. e.g., TFL49; A19204; W0012.
Cutting Permit	Cutting permit for the opening corresponding to the licence in the cutting permit document. Include for new submissions if a cutting permit exists for the opening.
Cutblock	Approved cutblock identifier for the opening as on the legal Exhibit A document. No leading zeros (unless the zeros exist in FTA). Special characters and spaces not recommended (e.g., -, /, _, *). e.g., 1002LM
Standards	Standards are available in RESULTS under Admin/Standards. Adm Org: HFP and the appropriate zone, subzone, variant, and site series
Licensee Opening ID	Ministry generated project code. As there is no inter-agency number for a denudation activity, the Licensee Opening ID on the Opening Inquiry page is the only way to identify these openings as Wildfire Risk Reduction funded
Denudation	Based on harvest system
Activity Objectives	Mandatory, FRE (fuel reduction) must be included as the primary objective. Other objectives can be used if needed as secondary or tertiary objectives. *CUB objective is reserved for areas where First Nations cultural burning occurred.
Funding Source Code	WRR, CF or FEP For BC Parks License Plate Program use BCP For non WRR funded projects, additional funding codes can be utilized.
Inter-agency No	WRR Funded Projects - Ministry generated project code. Project code will start with WR, followed by the 2-letter code for the Fire Centre (CO, CA, KA, SE, PG, NW) and then 4 digits (i.e., WRCA0003) CF Funded Projects – Project code provided by program administrator. Project codes begin with CRI, followed by 2-3 digits FEP funded projects – Project code provided by program administrator
Activity Spatial	Mandatory, must be provided for all activities completed under WRR and CF funding. *Roads and landings are not mapped, only the outer boundaries are to be submitted
Forest Cover	Mandatory: All forest cover polygons, including Reserve polygons, must be surveyed (as per wildfire survey standard) and new inventory forest cover reported. Silviculture forest cover information is conditional, if stocking standards exist, must be supplied.
Attachments	Land-based Plan (wildfire risk reduction plan) and other attachments as required by project - Note: if the plan applies to multiple areas, do not attach the document to all reported openings. Only attach once and reference the opening where the attachment is in all subsequent submissions.
Wildfire Risk Reduction Forward Planning	Immediate or future planned treatments or additional treatments as identified in the Land Base Plan (e.g., walkthru assessment) must be included as forward planned activities.
Base	As per program specifications
Technique	As per program specifications
Method	As per program specifications
Objective	As per program specifications
Funding Source	Select appropriate funding source code
Planned Date	YYYY-MM-DD
Planned Area	Total planned eligible area(s)

Government Funded Silviculture Activities – Version 7C

Field	Details
Planned Cost	Total estimated planned cost (\$). Use current local costs or estimates provided by funding program.
Inter-agency No	Not required for planned activities
Activity Spatial (GML)	Required *Roads and landings are not mapped, only the outer boundaries are to be submitted
Comments or Attachments	Land-based Plan (wildfire risk reduction plan) and other attachments as required by project - Note: if the plan applies to multiple areas, do not attach the document to all reported openings. Only attach once and reference the opening where the attachment is in all subsequent submissions.

The following tables provide a standardized reporting framework for completed prescribed fire projects that are funded by Wildfire Risk Reduction. For non-WRR funded projects, additional funding codes can be utilized. Capturing prescribed fire projects under this coding supports investment tracking and reporting out on prescribed fire initiatives.

Table 32. Prescribed Fire Activity Data Requirements

Field	Details
Prescribed Fire	Create a new shell opening and report using Section 7 to Section 10 with the changes below
Opening Category	NREQ for activities on Crown Land EXCLU for activities in Parks, Protected Areas, Federal Land or Private Land
Approval Date	Date of treatment or approval date of plan
Opening Spatial	Required
Opening Gross Area	Required
Activity Base	SP (Site Prep)
Activity Technique	BU (Burn)
Activity Method	BROAD (Broadcast)
Activity Objectives	Mandatory, FRE (fuel reduction) must be included as the primary objective. For secondary or tertiary objectives, refer to Table 31 below for available codes. *CUB objective is reserved for areas where First Nations cultural burning occurred.
Funding Source Code	WRR, CF or FEP For BC Parks License Plate Program use BCP For non WRR funded projects, additional funding codes can be utilized.
Inter-agency No.	<ul style="list-style-type: none"> WRR Funded Projects - Ministry generated project code. Project code will start with WR, followed by the 2-letter code for the Fire Centre (CO, CA, KA, SE, PG, NW) and then 4 digits (i.e., WRCA0003) CF Funded Projects – Project code provided by program administrator. Project codes begin with CRI, followed by 2-3 digits FEP funded projects – Project code provided by program administrator
Activity Spatial Attachment	Mandatory, must be provided for all prescribed burns (SP BU BROAD) The prescribed burn plan – Note: if the plan applies to multiple areas, do not attach the document to all reported openings. Only attach once and reference the opening where the attachment is in all subsequent submissions.

Table 33. Prescribed Fire Activity Objective Codes

Code	Description	Prescription/Burn Plan Primary Management Objective	Comment
RHM	Range Habitat Management	<ul style="list-style-type: none"> • Agriculture • Range 	<ul style="list-style-type: none"> • A prescribed burn completed to support land and crop management objectives. • A prescribed burn completed to improve livestock forage
CUB	Cultural Burning	<ul style="list-style-type: none"> • Cultural/Traditional 	<ul style="list-style-type: none"> • The traditional practice of planned and controlled use of fire on the landscape by Indigenous peoples for cultural and land management purposes. This includes burning for the health of plants and animals, as well as using fire for ceremonial purposes.
ER	Ecosystem Restoration	<ul style="list-style-type: none"> • Ecosystem Restoration • Forest Health 	<ul style="list-style-type: none"> • A prescribed burn completed to assist in the process of recovering resilience and adaptive capacity of ecosystems that have been degraded, damaged, or destroyed. • A prescribed burn completed to promote the growth or removal of tree species and other vegetation during and following the application of prescribed fire. • A prescribed burn completed to support forest health objectives such as pest management or disease eradication.
WHM	Wildlife Habitat Management	<ul style="list-style-type: none"> • Wildlife Habitat 	<ul style="list-style-type: none"> • A prescribed burn completed to improve wildlife habitat and forage for large mammals, such as deer, bighorn sheep, moose, and elk.
HAZ	Hazard Abatement	<ul style="list-style-type: none"> • Hazard Abatement 	<ul style="list-style-type: none"> • A prescribed burn completed to reduce forest fuels associated with harvesting activities.
FRE	Fuel Reduction	<ul style="list-style-type: none"> • Risk Reduction Community • Risk Reduction Other 	<ul style="list-style-type: none"> • A prescribed burn completed to reduce buildup of forest fuels around a community. • A prescribed burn completed to reduce buildup of forest fuels on the landscape, outside of a radius of a community.

20. BC PARKS LICENCE PLATE PROGRAM

BC Parks funds a minor amount of fuel management and prescribed fire projects, exclusively within parks and protected area boundaries. Only projects that produce land-based plans (e.g., BC Parks Prevention Prescription, Prescribed Burn Prescription/Burn Plan) and/or complete fuel management and/or prescribed fire activities on the ground, will be entered in RESULTS. Objectives of fuel management projects within parks and protected areas can vary and will be entered into RESULTS based on the approved plan.

Table 34. BC Parks Project Types

Fuel Management	Prevention Prescription
	Operational Treatments
Prescribed Fire	Operational Treatments
	Prescribed Burn Prescription

Table 35. BC Parks Data Requirements

Field	Details
Fuel Management: non-tenured	Create a new shell opening
Opening Category	EXCLU
Approval Date	Approval date of plan or date of treatment
Opening spatial	Do NOT provide opening spatial
Standards	Do NOT use standards
Activities	Include an activity for plan and/or treatment
Activity Objective	Mandatory, include FRE (fuel reduction) as the primary objective. Other objectives can be used subsequently as needed.
Funding Source Code	BCP
Activity Spatial	Mandatory, must be provided for the area covered in any land-based plan
Denudation	Not mandatory. DN E with area 0.1 ha only if forest cover is required
Forest cover	Only required if the forest cover has changed from the existing inventory. e.g., Removal or spacing of the understory where the mature canopy was not modified does not require a forest cover submission
Attachments	Approved prevention prescription and PDF map of proposed/completed treatment
Prescribed Broadcast Burns	Create a new shell opening
Opening Category	EXCLU
Approval Date	Approval date of plan or date of treatment
Opening Spatial	Do NOT provide opening spatial
Opening Gross Area	Area treated
Activities	Include an activity for broadcast burning (SP BU BROAD)
Activity Objective	If the activity is wildfire fuel reduction use the activity objective FRE (fuel reduction) as the primary objective. CUB objective is reserved for areas where First Nations cultural burning occurred. If the activity is habitat enhancement use ER (Ecosystem Restoration), HER (Habitat Enhancement Restoration), HPR (Habitat Protection), or HSR (Habitat, Wildlife, Fish Species Research) as the primary objective. Other objectives can be used subsequently as needed.
Funding Source Code	BCP
Activity Spatial	Mandatory, must be provided for all prescribed burns (SP BU BROAD)
Attachment	The prescribed burn plan and PDF map of proposed/completed treatment

21. FOREST ENHANCEMENT SOCIETY OF BRITISH COLUMBIA

Many different types of projects may be funded by FESBC or their funding partners but only projects that produce a land-based plan (e.g., a wildfire risk reduction plan) and/or complete activities on the ground will require RESULTS reporting. The project types below identify broad categories and over time, these may change, or new project types may be added. Five main groups have been identified: forest carbon, habitat enhancement, stand rehabilitation, fibre recovery and wildfire risk reduction.

Table 36. FES Project Types

Forest Carbon	Fertilization
	Planting
	Stand conversion
	Fibre recovery
Habitat Enhancement	Habitat Enhancement Restoration
	Ecosystem Restoration
	Habitat Protection
Stand Rehabilitation	Stand conversion
Wildfire Risk Reduction	Community Wildfire Protection
	Operational Fuel Treatments

Forest carbon projects will sequester carbon or avoid carbon emissions to meet the government carbon strategy.

FESBC has also partnered with two other groups to fund specific project types:

- Wildfire risk reduction projects that support communities to mitigate risk from wildfire in the wildland urban interface will be jointly funded with and administered by the Union of BC Municipalities Strategic Wildfire Prevention Initiative.
- Projects that enhance forested habitat for wildlife populations will be jointly funded with and administered by the Habitat Conservation Trust Foundation.

This section provides a standard reporting framework from which outcomes may be identified and reviewed.

Opening Category Codes are provided in Table 1, Section 6.1.

New openings must be created online to acquire an Opening ID for subsequent ESF submissions. The activities may be managed in one opening or multiple openings. The expectation is that the same opening will be managed over the reforestation obligation to monitor progress and achievement of milestones. All forest cover submissions to the openings must be for the entire opening (Section 10).

Table 37. FESBC Data Requirements

Field	Details
Carbon - Fertilization	Report using Section 13.
Funding Source Code	FCE (Forest Carbon activities funded by FESBC)
Inter-agency No.	Recipient administered projects: FESIMS project plan number BCTS administered projects: BCTFC followed by the last 4 digits of the FESIMS project plan number (e.g., BCTFC0362)

Government Funded Silviculture Activities – Version 7C

Field	Details
	MFOR administered projects: GOVFC followed by the last 4 digits of the FESIMS project plan number (e.g., GOVFC0352)
Activity Spatial	Mandatory, must be provided for all activities under FESBC and FCI *Roads and landings are not mapped, only the outer boundaries are to be submitted
Carbon – Stand Conversion and/or Planting	If activities cover an existing FFTITSL opening, report activities to that opening and do not change the opening category. In all other cases, create a new shell opening and report using Section 7 to Section 11 with the changes below. Reconnaissance surveys (with activity spatial) are reported to RESULTS even if no treatment is recommended. Report reconnaissance surveys with no treatment recommendations to an existing FG opening, if possible, but DO NOT CHANGE THE EXISTING FG FOREST COVER,
Opening Category	Section 6.4.2.1. and Table 1
Approval Date	Earliest of date of recent disturbance, survey, site preparation or planting
Denudation	If using an existing FFTITSL opening, add DN B activity (wildfire). For new openings, use: <ul style="list-style-type: none"> • DN E for no previous disturbance or where DN is already reported in an underlying opening; area is 0.1 ha. • DN B (wildfire), DN P (pest), DN R (Rehabilitation), area is the project area for any new disturbance.
Planned activities	Include all planned activities to FG, using the funding source code FCM. Required for all openings planted with FCM or FCE funded seedlings
Funding Source Code	FCE (Forest Carbon Activities funded by FESBC)
Inter-agency No.	Recipient administered projects: FESIMS project plan number BCTS administered projects: BCTFC followed by the last 4 digits of the FESIMS project plan number (e.g., BCTFC0362) MFOR administered projects: GOVFC followed by the last 4 digits of the FESIMS project plan number (e.g., GOVFC0352)
Activity Spatial	Mandatory, must be provided for all activities completed under FCI and FESBC. *Roads and landings are not mapped, only the outer boundaries are to be submitted
Forest Cover	If using an existing opening, report forest cover for the <u>entire</u> opening.
Attachments	As required under the program standards.
Habitat Enhancement Restoration, Ecosystem Restoration, Habitat Protection, Habitat Species Research	Create a new shell opening and report using Section 18
Funding Source Code	FES
Inter-agency No.	FESIMS project plan number
Wildfire Risk Reduction, non-tenured and tenured	Create a new shell opening and report using Section 19
Funding Source Code	FES
Inter-agency No.	FESIMS project plan number

22. FOREST CARBON INITIATIVE

Forest Carbon Initiative projects including fertilization and surveys, site preparation, planting and associated stand monitoring will be reported to RESULTS. Apart from reforestation on existing FFTITSL openings or fertilization on existing RESULTS openings, new shell openings will be created for these activities. This section provides a standard reporting framework from which outcomes may be identified and reviewed.

Opening Category Codes are provided in Table 1, Section 6.1. Funding source codes are in Table 2 and are used to track the primary delivery agent or agency.

New openings must be created online to acquire an Opening ID for subsequent ESF submissions. The activities may be managed in one opening or multiple openings. The expectation is that the same opening will be managed over the reforestation obligation to monitor progress and achievement of milestones. All forest cover submissions to the openings must be for the entire opening.

Table 38. FCI Data Requirements

Field	Details
Carbon - Fertilization	Report using Section 13.
Funding Source Code	FCE (Forest Carbon Activities funded by FESBC) FCM (FCI activities funded by MFOR)
Inter-agency No.	<ul style="list-style-type: none"> • BCTS administered projects funded by FCI: FCI project number (7 digits) • BCTS administered projects funded by FESBC: BCTFC followed by the last 4 digits of the FESIMS project plan number (i.e., BCTFC0362) • MFOR administered projects funded by FCI: FCI project number (7 digits) • MFOR administered projects funded by FESBC: GOVFC followed by the last 4 digits of the FESIMS project plan number (i.e., GOVFC0352) • Recipient administered projects where funds are distributed by Pricewaterhouse Coopers (PWC): PWC generated project code. Starts with FCI and is followed by 7 digits • Recipient administered projects funded by FCI directly: FCI project number (7 digits) • Recipient administered projects funded by FESBC: FESIMS project plan number
Activity Spatial	Mandatory, must be provided for all planned and completed activities under FESBC and FCI *Roads and landings are not mapped, only the outer boundaries are to be submitted
Carbon – Stand Conversion and/or Planting	If activities cover an existing FFTITSL opening, report activities to that opening and do not change the opening category. In all other cases, create a new shell opening and report using Section 7 to Section 11 with the changes below. Reconnaissance surveys are reported to RESULTS (with activity spatial) even if no treatment is recommended. Report reconnaissance surveys with no treatment recommendations to an existing FG opening, if possible, but DO NOT CHANGE THE EXISTING FG FOREST COVER,
Opening Category	Section 6.4.2.1. and Table 1
Approval Date	Earliest of date of recent disturbance, survey, site preparation or planting

Government Funded Silviculture Activities – Version 7C

Field	Details
Denudation	If using an existing FFTITSL opening, add DN B activity (wildfire). For new openings, use: <ul style="list-style-type: none"> • DN E (Enhancement) for no previous disturbance or where DN is already reported in an underlying opening; area is 0.1 ha. • DN E for road rehabilitation projects, area is 0.1 ha. • DN B (Burnt Wildfire) or DN P (Pest), area is the project area for any new disturbance.
Planned activities	Include all planned activities to FG, using the funding source code FCM. Required for all openings planted with FCM or FCE funded seedlings.
Funding Source Code	FCE (Forest Carbon Activities funded by FESBC) FCM (FCI activities funded by MFOR – Forest for Tomorrow or direct MFOR funding)
Inter-agency No.	<ul style="list-style-type: none"> • BCTS administered projects funded by FCI: FCI project number (7 digits) • BCTS administered projects funded by FESBC: BCTFC followed by the last 4 digits of the FESIMS project plan number (i.e., BCTFC0362) • MFOR administered projects funded by FCI: FCI project number (7 digits) • MFOR administered projects funded by FESBC: GOVFC followed by the last 4 digits of the FESIMS project plan number (i.e., GOVFC0352) • Recipient administered projects where funds are distributed by Pricewaterhouse Coopers (PWC): PWC generated project code. Starts with FCI and is followed by 7 digits • Recipient administered projects funded by FCI directly: FCI project number (7 digits) • Recipient administered projects funded by FESBC: FESIMS project plan number
Activity Spatial	Mandatory, must be provided for all activities planned and completed under FCI and FESBC. *Roads and landings are not mapped, only the outer boundaries are to be submitted
Forest cover	Report forest cover for the entire opening.
Attachments	As required under the program standards.

23. FRPA S. 107 DECLARATION OR S. 108 APPLICATION

If a tenured opening with outstanding silviculture obligations has been damaged by an event such as a fire, landslide, or flood and meets the requirements of FRPA s. 108 and FPPR s. 96, FRPA s. 108 may provide funding or relief of obligation.

However, as outlined in [FRPA General Bulletin Number 26](#), if an obligation holder believes that they met the free growing obligation on all or part of an opening prior to a damaging event, they may submit a FG declaration under FRPA s. 107. The date of the FG declaration must be prior to the date of the damaging event and the milestone declaration must include a comment that it is being declared under FRPA s. 107. A FG forest cover submission must accompany the declaration.

23.1 RESULTS UPDATES PRIOR TO S. 108 APPLICATION

A s. 108 application must not include SUs that have previously been declared FG as all licensee obligations have already been met on these areas. The burn disturbance includes all burnt areas within the opening. Forest cover submissions are a complete delete and replace,

all new and existing forest cover polygons must be submitted. Forest cover attributes for FG polygons should not be updated to post-burn status.

Before submitting a FRPA s. 108 application:

- Submit a disturbance activity for the natural disturbance event.
- Pre and post event forest cover are required. Forest cover submission must be done on separate calendar days to maintain the history in RESULTS.

23.2 S. 108 APPLICATION

If both relief of obligations and request for funding are applied for on the same opening, separate applications are required.

If the s. 108 application is for relief of obligations, check the ‘Relief from Obligations’ box. Relief of obligations under s. 108 only applies to areas that (a) have not achieved FG, (b) are not a s. 107 application, (c) are no longer practicable to reforest to the condition prior to the new disturbance.

For both, requests for relief of obligations and for funding, the following information must be provided.

1. Disturbance Section: RESULTS references disturbance history associated with the opening. (*To qualify for s. 108, the disturbance event must have occurred after December 17, 2002*). Once the disturbance event is selected, the information is auto filled.
2. Forest Cover Observation Dates Section: *Forest Cover Observation Dates* describe the forest condition prior to the event and the most recent forest cover after the damaging event demonstrating the current forest condition leading to the FRPA s. 108 request. Hyperlinks are available to view the detailed forest cover associated with each event. From the dropdown menu, pick the appropriate forest cover submissions for the ‘Before Event Date’ and the ‘After Event Date’.
3. Planned Activity Regime: Planned activities are not submitted for applications requesting relief of obligations. Where funding is requested, the request is comprised of the activities required to re-establish the stand condition that existed immediately prior to the catastrophic event. Funding source code FRP is used for all planned activities.
4. Attachments: If applicable, attach any documents that justify the s. 108 application or provide a rationale for the relief or funding requested.
5. Eligibility and Authorization: Check the applicable eligibility box(s) and confirm authorization to complete the s. 108 request. Save and submit the application, this will send the application to the district RESULTS Inbox. Contact the district RESULTS Coordinator (or designated district contact if known) to let him/her know that a FRPA s. 108 application is awaiting processing in the district RESULTS Inbox.

23.3 FRPA S. 108 PROCESSING (POST APPROVAL)

23.3.1 Relief of Obligation for Partial or Complete Opening

Relief of obligation may be approved where there are outstanding free growing obligations on one or more standard units. The standard unit that is granted relief of obligation is declared free growing by the licensee and the following comment is included with the milestone declaration: **“Relief of obligation under s. 108 granted”**. This will facilitate the removal of the obligation and prevent future C & E enforcement actions.

Do not change the opening category and do not report any government funded silviculture activities to this opening except those funded under s. 108.

23.3.2 Funding for Obligations

Once funding is approved, the planned activities automatically move into the Activities tab in RESULTS.

***Completed activities funded by s.108 funded activities must use funding source code FRP. Planned activities are either updated or removed.**

Please note, upon approval for funding, there is no requirement to undeclare the regen milestone and amend the stocking standards offsets. The regen was deemed achieved prior to the catastrophic event and is not applicable post s.108 approval. If the stand had already met the regeneration milestone and been reported prior to the fire, please submit updated forest cover when the stand has been re-established.

If the free growing milestone will not be achieved within the FRPA prescribed requirement of 20 years or according to an alternate stocking standard, a new standard may be proposed, or an extension may be requested. If a person who is required to establish a free growing stand can't meet the requirements including the free growing date of 20 years, they must give notice to the Delegated Decision Maker (DDM) acknowledging the reasons for not meeting the requirements and submit to the DDM a proposal for establishing a free growing stand on the area.

Once approval is received from the DDM, use the RESULTS application to update the relevant information, such as stocking standard attributes. The stocking standard amendment rationale should state that the update is part of a FRPA section 108 application, and consistent with FPPR 46.2.

For additional information please refer to [FRPA General Bulletin 24](#).

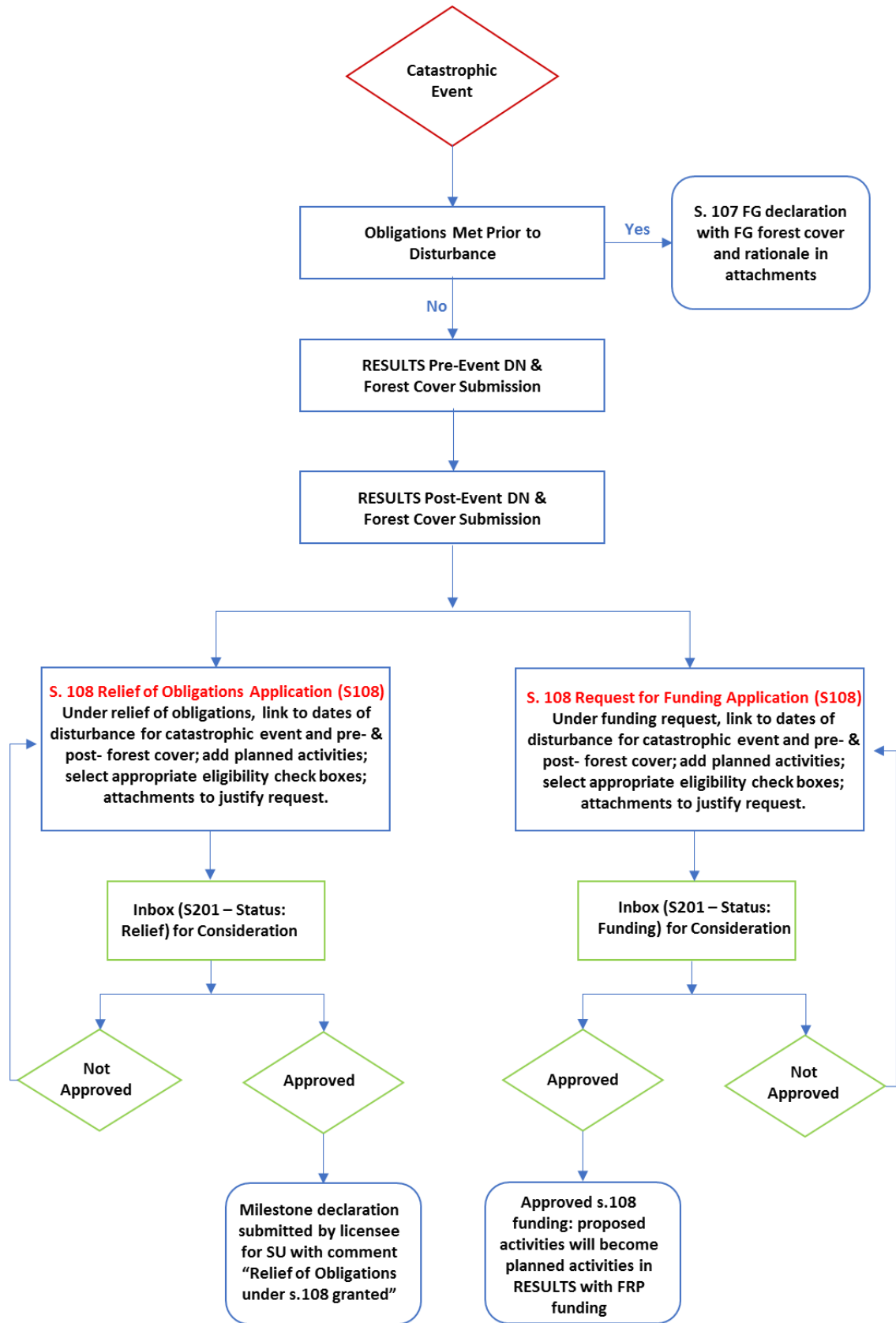


Figure 3. FRPA S. 108 Processing Workflow

24. GAR OPENINGS

Prior to any RESULTS updates for GAR openings, the affected licensees will submit a master list of the openings, and the value that is to be relieved (if applicable) to the district for review and approval by the Resource District Manager.

24.1 NO HARVEST ZONES

Each licensee with GAR openings in no harvest zones will change the opening category to EXCLU (excluded from the THLB).

The district will review each of these openings to confirm that it is on the master list provided by the licensee. The district confirms that the area being relieved is consistent with the relief of obligations provided by the Resource District Manager under Section 91(1) of the Forest Planning and Practices Regulation. The district will update the opening status to RET in lieu of ‘approval’ to show that the district staff has checked that the above requirements have been met.

24.2 MITIGATION OPENINGS EXTERNAL TO GAR AREAS

This section is specific to openings where the MFLNORD has exempted the licensee from all outstanding silviculture obligations under Section 91 (1)(a)(i) and (iii) of the FPPR. MFLNORD has taken on the silviculture obligations to mitigate the costs of unamortized roads and harvest authorities that will not be exercised to maintain critical wildlife habitat or other values.

1. Letters by licensee listing each block exempted from all outstanding silviculture obligations will identify GAR mitigation cut blocks.
2. **All blocks identified are expected to be in RESULTS.** Upon harvest completion, licensees are required to report the disturbance with updated denuded forest cover. This includes the licensee providing opening definition reporting with standard units and associated stocking standards, disturbance activity and forest cover with both spatial and attribute data. Forest cover updates for any new harvested or regenerated areas are to include the current stocking status and stocking information with full labels and any reserves or mature timber within the block.
3. Licensees will identify and update all outstanding planned activities required to achieve free growing.
4. Licensees must notify the district when their updates are complete as the district will not receive a system-generated notification.
5. The district will review each opening submitted to RESULTS to confirm it is on the letter provided to the licensee granting relief of obligations. The district confirms that the area of the opening and the associated liabilities being relieved are consistent with the relief of obligations provided under Section 91.
6. The district will update the opening category to ‘NREQ’ in RESULTS and add a comment in lieu of ‘approval’ functionality to indicate that all requirements as stated above are met. This opening category indicates that the silviculture obligation is now held by the district.

7. All subsequent activities by the district will be reported to the licensee opening but will follow Sections 9 to 11 of this document and will use the Funding Source Code applicable to the program funding the activities.
8. Reporting for licensee-managed GAR mitigation openings will be consistent with [RISS-ls](#) but will also use the Funding Source Code applicable to the program funding the activities.

24.2.1 Damaged GAR Mitigation Openings

If the district or licensee believes that the free growing obligation had been met on all or part of a GAR mitigation opening prior to the damaging event, they may submit a FG declaration under FRPA s. 107. The date of the FG declaration must be prior to the date of the damaging event and the milestone declaration must include a comment that it is being declared under FRPA s. 107.

If a GAR mitigation opening is damaged or destroyed by fire, pests, or another damaging event

before reaching FG, the district or licensee managing the opening has the following choices:

1. If no further work will be done, amend the standards unit(s) to accept the remaining stocking and complete a FG declaration. Include a description of the damage and the rationale for no further activities in the milestone comment.
2. Continue to manage the opening to FG. Add a DN activity relevant to the damage incurred.

Any post-FG activities on 1 or 2 above will be reported to new openings to maintain the history of the GAR Mitigation openings.

25. SMALL SCALE SALVAGE

MFOR policy requires the SSS program to report information in accordance with this guide and the [RISS-ls](#). The current publication applies to silviculture operations that are subject to Forest Stand Management Fund or funds collected from the Forest Stand Management Levy such as:

- a. MFOR-managed non-replaceable forest licences.
- b. Community salvage under community forest agreements.
- c. FOR-managed Small-Scale Salvage.
- d. FLTC with and without free growing obligations.

To track forest inventory updates and free growing obligations, all areas harvested under the SSS program that have legal free growing obligations must be entered into RESULTS. SSS blocks without legal free growing obligations are entered into RESULTS at the discretion of the district. Salvage permits for rights-of-way including roads, hydro lines, fireguards, or pipelines that have no silviculture obligations do not need to be reported to RESULTS.

Data must be submitted for disturbance, surveys, planned and completed treatments and forest cover updates as outlined in Sections 9 to 11. For details on submissions and data requirements, please refer to this guide and the [RISS-ls](#).

26. DATA DISCREPANCIES

When data inconsistencies are found, forest professionals should contact the custodians of the data (e.g. licensees and/or district office for licensee-responsibility openings; district office for government-responsibility openings) to report their findings, so that the custodians may check and correct the data if required.

27. QUALITY ASSURANCE MONITORING

Submissions made to RESULTS under government funded programs are subject to data quality assurance monitoring. All submissions must be consistent with this guide and all submitters are responsible for any required updates identified by the quality assurance process.