



FREP Data Management (Interim for 2008-2009) Quality Control Protocol #2



For the most current version of this document,
please consult the FREP web site [QM_FREP_QC-Protocol2-Aug-2008.pdf](#)

Purpose

This protocol provides a guideline to streamline the data and field cards management for the Stand-level Biodiversity and Riparian/Fish resource values for 2008/09.

Rationale

Under the guidance of this protocol, the field cards and data are managed to achieve the following goals:

1. This protocol will help to ensure a consistent process in handling field cards and data;
2. This protocol will help to maintain and to increase data accuracy beginning from data entry into FREP IMS and prior to data analysis.

Methodology and Processes

The level 1 process map illustrates the data entry process for districts and for Forest Practices Branch. Districts have the options to enter their own data (after taking the FREP IMS training) or send to Victoria for processing. In either scenario, please send the original field cards (with map and SP) to Victoria. The level 2 process map gives a more detail view on how the overall field cards go through data validation, entry, verification, and the potential cleaning processes. The level 2 process map is intended for branch use (team leads, FREP data team, and trainers). The level 3 process maps show the most detail of data validation and verification processes. The level 3 process maps are used by the FREP data team.

Figure 1. Level 1 Process Map for FREP Data (District Use)

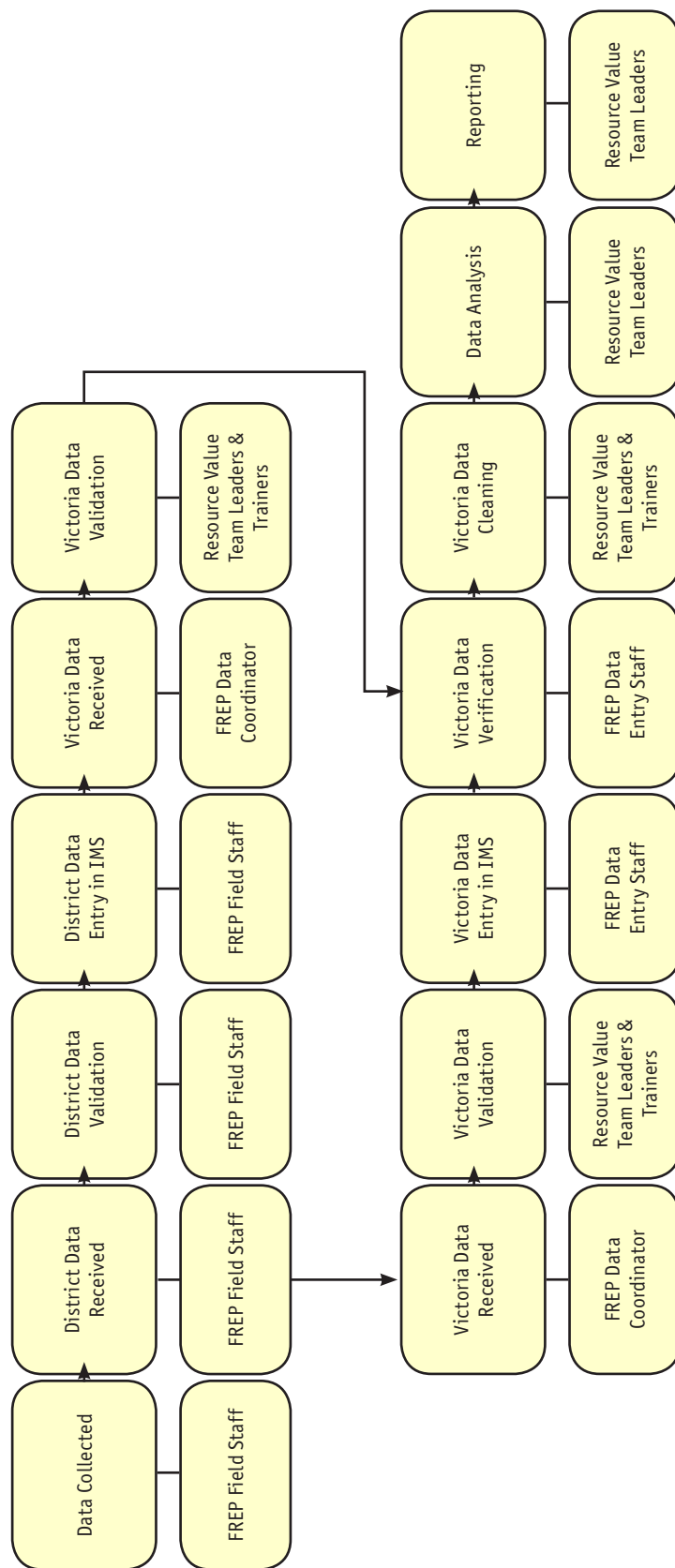


Figure 2. Level 2 Process Map for FREP Data (Team Leads, FREP Data Team, and Trainers Use)

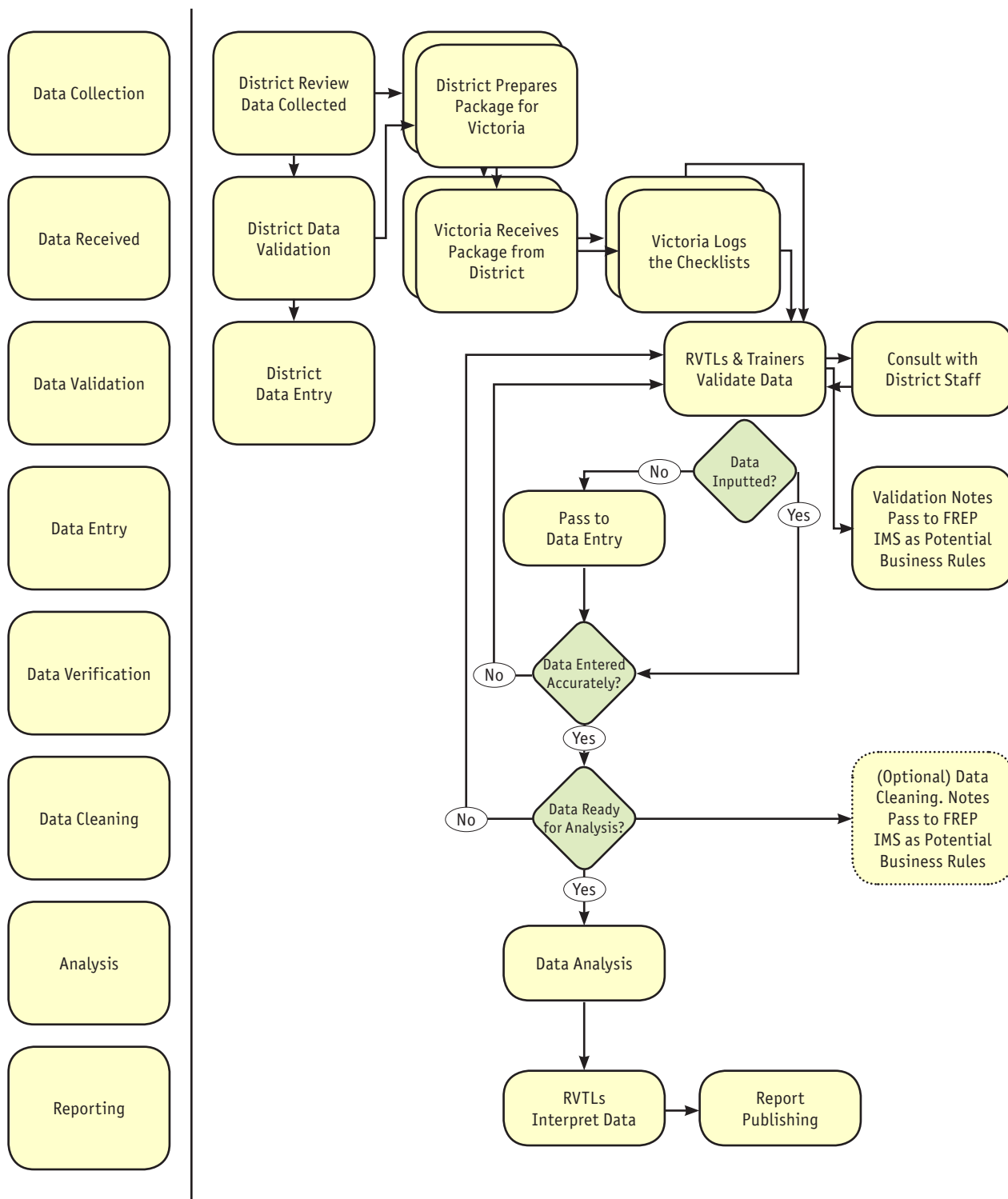


Figure 3. Data Validation and Verification – Level 3 Process Map When Data are Entered by District Office

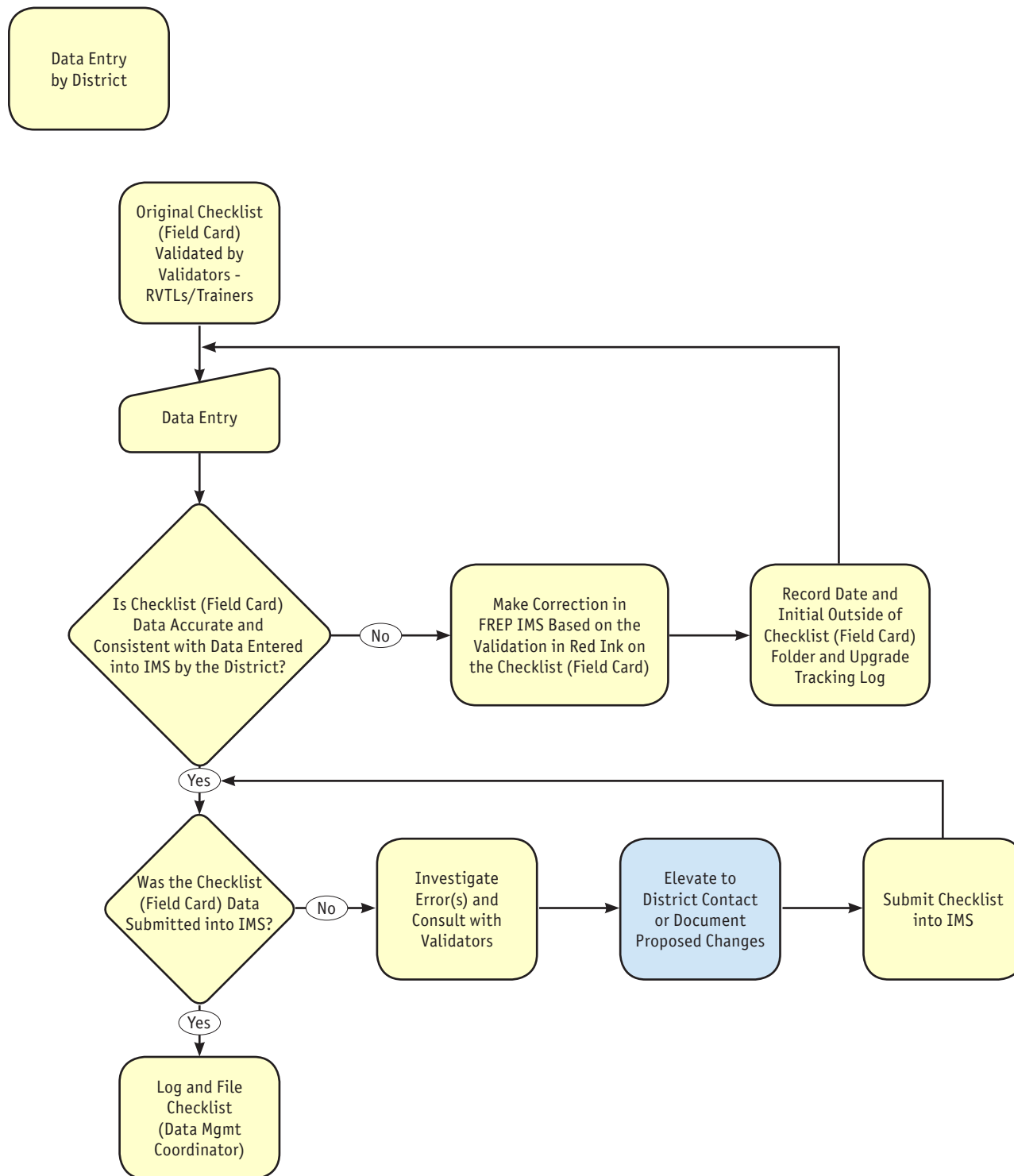


Figure 4. Data Validation and Verification – Level 3 Process Map When Data are Entered by FREP Data Team

