



## B.C. Forest Product Exports

September 2018

Published November 22

### Highlights for Year-to-Date (YTD)

B.C. export values are up **9.5%** for 2018 YTD September compared to the same period in 2017 (**\$11.48** billion vs. **\$10.48**). Lumber value is up **4%** (volumes are down **-4%**). Pulp export value is up (**29%**). The value of Other Wood Products<sup>1</sup> is up slightly (**6%**), and so is the value of Other Paper Products<sup>2</sup> (**9%**).

In terms of value by destination China (**9%**), Japan (**21%**), and Other countries are up (**20%**). The value to the United States is now up (**5%**).

### Value and Quantity by Product (YTD)

	Value		Quantity	
	Value (\$m)	Change from 2017	Quantity (thousands)	Change from 2017
Lumber	\$ 5,042	<b>4%</b>	18,202 m3	<b>-4%</b>
Pulp	\$ 3,243	<b>29%</b>	3,116 t	<b>-5%</b>
Other Wood	\$ 1,832	<b>6%</b>	-	-
Other Paper	\$ 790	<b>9%</b>	-	-
Logs	\$ 569	<b>-12%</b>	3909 m3	<b>-19%</b>
<b>Total</b>	<b>\$ 11,476</b>	<b>9.5%</b>	-	-

### Value by Country (YTD)

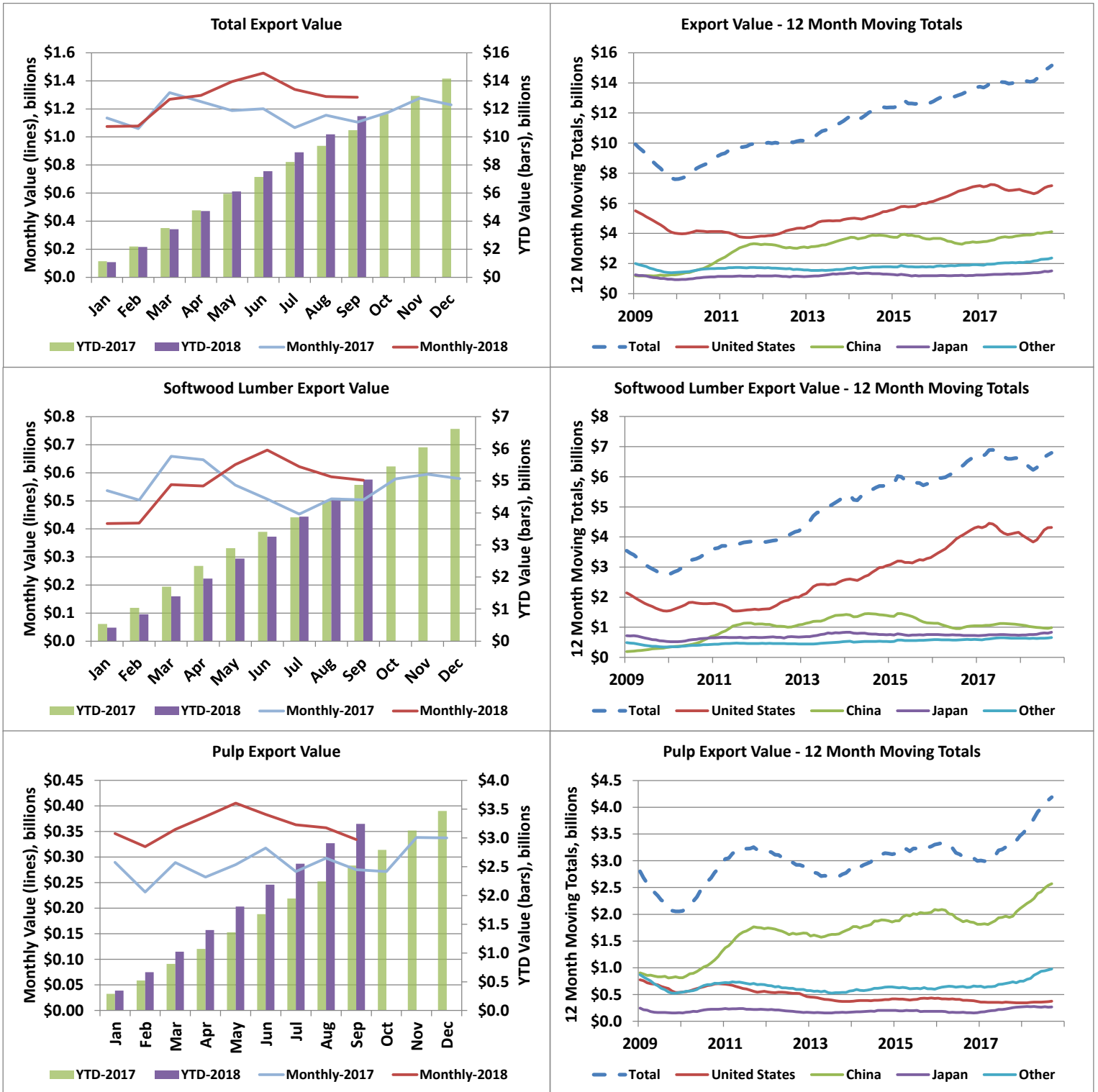
	Value (\$m)	Change from 2017	Share of Value in	
			2018*	Share in 2017
USA	\$ 5,346	<b>5%</b>	<b>47%</b>	49%
China	\$ 3,116	<b>9%</b>	<b>27%</b>	27%
Japan	\$ 1,178	<b>21%</b>	<b>10%</b>	9%
Other Countries	\$ 1,836	<b>20%</b>	<b>16%</b>	15%
<b>Total</b>	<b>\$ 11,476</b>	<b>9.5%</b>	<b>100%</b>	<b>100%</b>

\*Colour denotes if share is up or down compared to previous year.

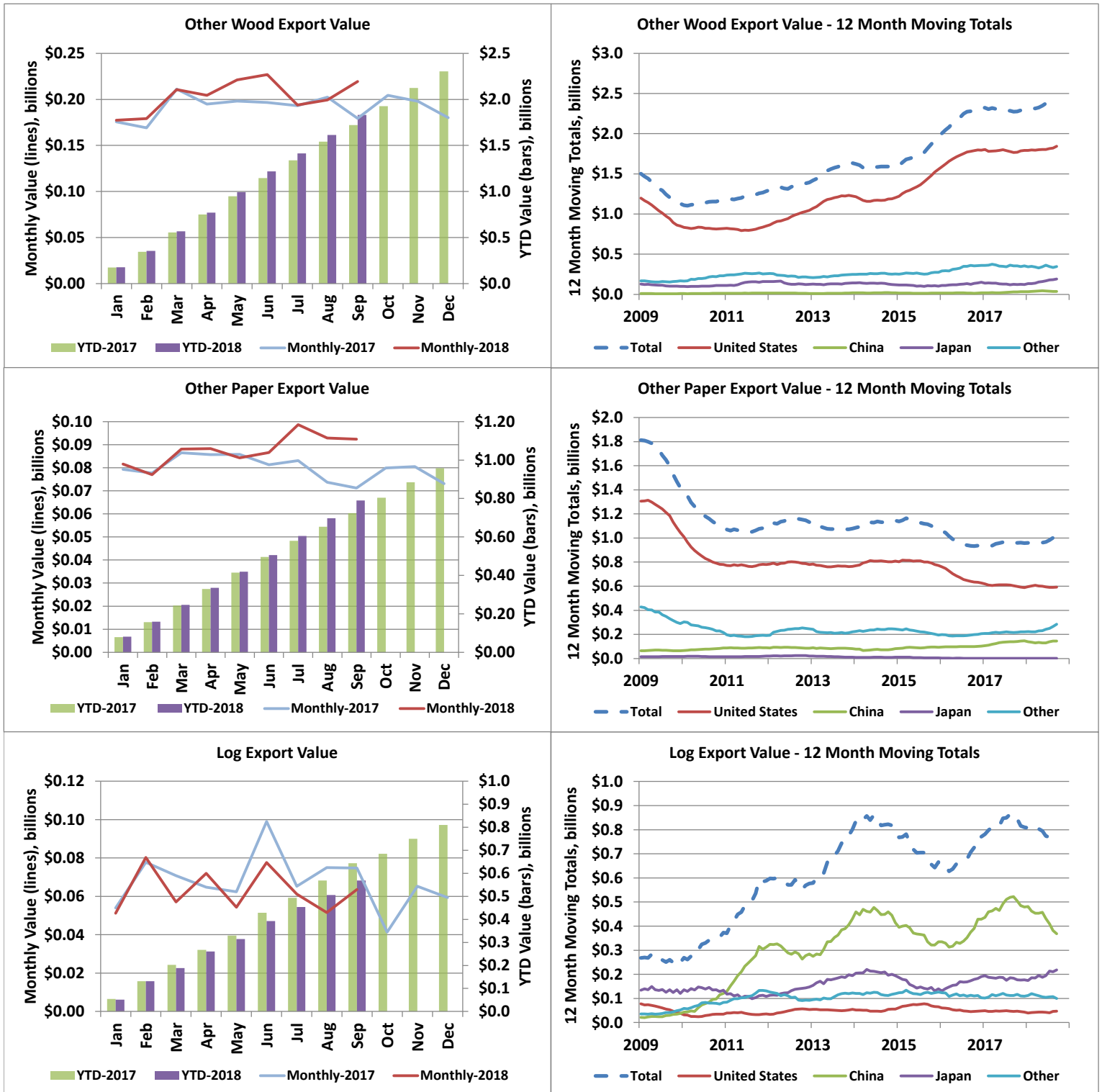
1. Includes wood products such as Veneer, OSB, Plywood, Siding, Poles, Chips, Ties, Mouldings, Panels, Furniture, Seats, Pellets, Shake and Shingles, etc.

2. Includes paper products such as Paper, Cards, Cartons, Rolls, Trays, Containers and Sacks & Bags, etc.

## Export Values by Product and Destination



## Export Values by Product and Destination



## B.C. Forest Product Exports - September 2018

Value (C\$ Millions) - September																
2018								Change in Total YoY	2017							
	Lumber	Pulp	Other Wood	Other Paper	Logs	Country Total	Country Share			Lumber	Pulp	Other Wood	Other Paper	Logs	Country Total	Country Share
U.S.A.	338	42	162	47	3	593	46%	8%	U.S.A.	330	32	140	46	2	551	50%
China	94	188	3	9	32	326	25%	12%	China	75	157	4	9	45	290	26%
Japan	81	28	21	0	26	155	12%	38%	Japan	55	26	14	0	18	113	10%
Other	60	77	34	36	3	209	16%	38%	Other	44	60	21	16	10	151	14%
<b>Product Total</b>	<b>573</b>	<b>334</b>	<b>219</b>	<b>92</b>	<b>64</b>	<b>1,283</b>	<b>100%</b>	<b>16%</b>	<b>Product Total</b>	<b>504</b>	<b>275</b>	<b>179</b>	<b>71</b>	<b>75</b>	<b>1,105</b>	<b>100%</b>
<b>Product Share</b>	45%	26%	17%	7%	5%	100%			<b>Product Share</b>	46%	25%	16%	6%	7%	100%	
<b>Change in Total YoY</b>	<b>14%</b>	<b>21%</b>	<b>22%</b>	<b>30%</b>	<b>-15%</b>	<b>16%</b>										

\*China includes exports to Hong Kong.

Value (C\$ Millions) - Year to Date																
2018								Change in Total YoY	2017							
	Lumber	Pulp	Other Wood	Other Paper	Logs	Country Total	Country Share			Lumber	Pulp	Other Wood	Other Paper	Logs	Country Total	Country Share
U.S.A.	3,163	301	1,391	451	40	5,346	47%	5%	U.S.A.	3,005	271	1,341	448	36	5,101	49%
China	720	1,957	40	108	291	3,116	27%	9%	China	820	1,495	38	116	400	2,869	27%
Japan	652	201	145	1	178	1,178	10%	21%	Japan	556	201	79	1	137	975	9%
Other	507	784	256	230	60	1,836	16%	20%	Other	489	552	264	159	70	1,534	15%
<b>Product Total</b>	<b>5,042</b>	<b>3,243</b>	<b>1,832</b>	<b>790</b>	<b>569</b>	<b>11,476</b>	<b>100%</b>	<b>9.5%</b>	<b>Product Total</b>	<b>4,871</b>	<b>2,519</b>	<b>1,721</b>	<b>724</b>	<b>644</b>	<b>10,479</b>	<b>100%</b>
<b>Product Share</b>	44%	28%	16%	7%	5%	100%			<b>Product Share</b>	46%	24%	16%	7%	6%	100%	
<b>Change in Total YoY</b>	<b>4%</b>	<b>29%</b>	<b>6%</b>	<b>9%</b>	<b>-12%</b>	<b>9.5%</b>										

Quantity (Thousands) - September										
2018			Change YoY			2017				
	Lumber (m <sup>3</sup> )	Pulp (tonnes)	Logs (m <sup>3</sup> )	Lumber	Pulp	Logs		Lumber (m <sup>3</sup> )	Pulp (tonnes)	Logs (m <sup>3</sup> )
U.S.A.	1,450	46	25	9%	7%	21%	U.S.A.	1,335	43	21
China	423	182	225	3%	-15%	-32%	China	411	214	331
Japan	178	28	145	7%	-28%	22%	Japan	167	39	119
Other	130	72	34	16%	-8%	-50%	Other	112	78	68
<b>Total</b>	<b>2,181</b>	<b>327</b>	<b>429</b>	<b>8%</b>	<b>-13%</b>	<b>-20%</b>	<b>Total</b>	<b>2,025</b>	<b>375</b>	<b>539</b>
<b>Change in Total YoY</b>	<b>8%</b>	<b>-13%</b>	<b>-20%</b>							

Quantity (Thousands) - Year to Date										
2018			Change YoY			2017				
	Lumber (m <sup>3</sup> )	Pulp (tonnes)	Logs (m <sup>3</sup> )	Lumber	Pulp	Logs		Lumber (m <sup>3</sup> )	Pulp (tonnes)	Logs (m <sup>3</sup> )
U.S.A.	12,040	316	295	1%	-3%	-3%	U.S.A.	11,967	326	305
China	3,427	1,857	2,094	-18%	-6%	-30%	China	4,170	1,979	2,996
Japan	1,554	190	1,080	0%	-25%	8%	Japan	1,552	254	1,000
Other	1,182	753	440	-6%	6%	-19%	Other	1,252	707	544
<b>Total</b>	<b>18,202</b>	<b>3,116</b>	<b>3,909</b>	<b>-4%</b>	<b>-5%</b>	<b>-19%</b>	<b>Total</b>	<b>18,941</b>	<b>3,267</b>	<b>4,845</b>
<b>Change in Total YoY</b>	<b>-4%</b>	<b>-5%</b>	<b>-19%</b>							

## B.C. Forest Product Exports - September 2018

Share of Value - 2018 YTD September						
Country	Lumber	Pulp	Other Wood	Other Paper	Logs	Country Share
U.S.A.	63%	9%	76%	57%	7%	47%
China	14%	60%	2%	14%	51%	27%
Japan	13%	6%	8%	0%	31%	10%
Other	10%	24%	14%	29%	11%	16%
<b>Total</b>	<b>100%</b>	<b>100%</b>	<b>100%</b>	<b>100%</b>	<b>100%</b>	<b>100%</b>
Product Share	44%	28%	16%	7%	5%	100%

Share of Quantity - 2018 YTD September					
Country	Lumber	Pulp	Logs	Panels	Pellets
U.S.A.	66%	10%	8%	82%	1%
China	19%	60%	54%	4%	0%
Japan	9%	6%	28%	9%	27%
South Korea	1%	4%	10%	0%	2%
Indonesia	0%	8%	0%	0%	0%
U.K	0%	0%	0%	1%	66%
Other	5%	12%	2%	5%	3%
<b>Total</b>	<b>100%</b>	<b>100%</b>	<b>100%</b>	<b>100%</b>	<b>100%</b>

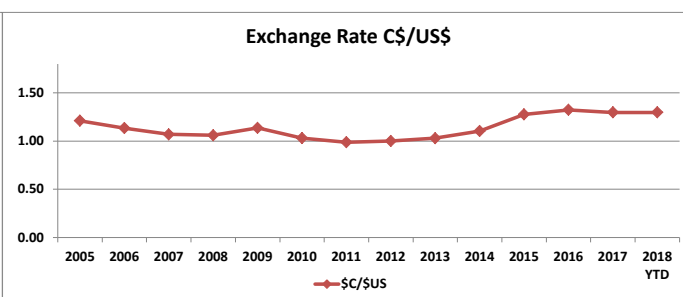
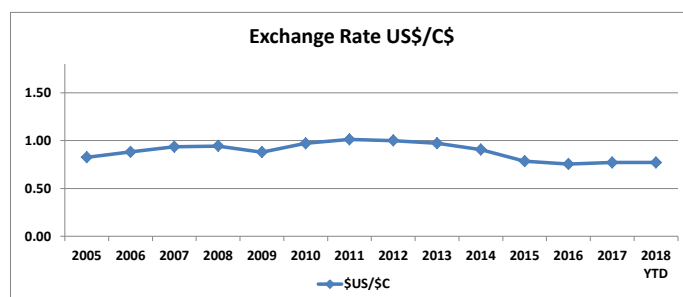
\*Panels include OSB, plywood, particleboard, and fibreboard

B.C. Forest Product Export Value (C\$ Million) by Market, 2005 to 2018 YTD September														
Country	2005	2006	2007	2008	2009	2010	2011	2012	2013	2014	2015	2016	2017	2018 YTD
U.S.A.	9,572	8,816	7,373	5,613	4,017	4,125	3,825	4,344	4,973	5,533	6,132	7,140	6,929	5,346
China	731	890	1,212	1,196	1,253	2,205	3,252	3,107	3,662	3,769	3,673	3,410	3,847	3,081
Japan	1,677	1,680	1,350	1,241	933	1,136	1,178	1,135	1,343	1,278	1,193	1,230	1,307	1,178
Other	2,482	2,154	2,175	2,347	2,057	1,400	1,677	1,729	1,574	1,676	1,804	1,815	1,919	1,871
<b>Total</b>	<b>14,462</b>	<b>13,540</b>	<b>12,110</b>	<b>10,397</b>	<b>8,260</b>	<b>8,866</b>	<b>9,932</b>	<b>10,315</b>	<b>11,553</b>	<b>12,255</b>	<b>12,803</b>	<b>13,596</b>	<b>14,003</b>	<b>11,476</b>

B.C. Forest Product Export Value (C\$ Million) by Product, 2005 to 2018 YTD September														
Products Category	2005	2006	2007	2008	2009	2010	2011	2012	2013	2014	2015	2016	2017	2018 YTD
Lumber (softwood)	6,272	5,849	4,773	3,606	2,749	3,558	3,833	4,204	5,311	5,723	5,792	6,669	6,625	5,042
Pulp	2,643	2,887	3,379	2,878	2,056	2,939	3,200	2,852	2,831	3,121	3,301	2,998	3,466	3,243
Other Wood Products	2,679	2,440	2,022	1,524	1,129	1,175	1,284	1,394	1,633	1,594	1,948	2,325	2,303	1,832
Other Paper Products	2,006	1,897	1,739	1,821	1,419	1,098	1,079	1,132	1,077	1,144	1,066	937	958	790
Logs	534	487	369	278	249	373	588	577	802	784	665	771	805	569
<b>Total</b>	<b>14,353</b>	<b>12,997</b>	<b>15,081</b>	<b>14,134</b>	<b>13,560</b>	<b>12,282</b>	<b>10,107</b>	<b>8,239</b>	<b>9,143</b>	<b>9,985</b>	<b>10,159</b>	<b>11,654</b>	<b>12,396</b>	<b>11,476</b>

B.C. Forest Product Export Quantity (millions) by Product, 2005 to 2018 YTD September														
Products Category	2005	2006	2007	2008	2009	2010	2011	2012	2013	2014	2015	2016	2017	2018 YTD
Lumber (softwood) - m <sup>3</sup>	33.30	32.83	28.25	21.21	17.82	20.85	22.84	24.16	25.88	25.84	26.20	27.66	25.29	18.20
Pulp - tonnes	4.45	4.73	4.87	3.95	3.29	3.79	4.10	4.45	4.15	4.14	4.27	4.07	4.33	3.12
Logs - m <sup>3</sup>	4.77	4.31	3.34	2.62	2.46	3.74	5.45	5.71	6.67	6.27	5.57	6.28	5.98	3.91
Panels - m <sup>3</sup>	2.53	2.90	2.68	1.86	1.25	1.10	1.63	1.57	1.67	1.52	1.78	2.14	2.23	1.66
Pellets - tonnes	0.41	0.51	0.63	0.68	0.76	1.06	1.22	1.17	1.28	1.29	1.26	1.93	1.78	1.63

\*Panels include OSB, plywood, particleboard, and fibreboard. Veneer is excluded.



Source: OANDA

Additional exchange rates will be included in the near future

[Additional annual data and charts can be found in the annual Economic State of B.C.'s Forest Sector](#)

## Export Quantities by Product and Destination

