

B.C. Forest Product Exports – March 2017

Highlights for Year-to-Date (YTD)

B.C. export values are up **2%** for 2017 YTD March compared to the same period in 2016 (**\$3.52** billion vs. **\$3.44**). Lumber value is up **2%** (volumes are down **-12%**). Pulp export value is unchanged (**0%**). The value of Other Wood Products¹ has declined (**-1%**), and the value of Other Paper Products² is unchanged (**0%**).

In terms of value by destination country China (**+8%**) and Japan (**+8%**) are up. Value to Other countries (**6%**) is also up. The value to the United States (**-3%**) is down.

Value and Quantity by Product (YTD)

	Value		Quantity	
	Value (\$m)	Change from 2016	Quantity (thousands)	Change from 2016
Lumber	\$ 1,704	2%	6,374 m3	-12%
Pulp	\$ 811	0%	1087 t	1%
Other Wood	\$ 556	-1%	-	-
Other Paper	\$ 243	0%	-	-
Logs	\$ 203	25%	1,579 m3	20%
Total	\$ 3,517	2%	-	-

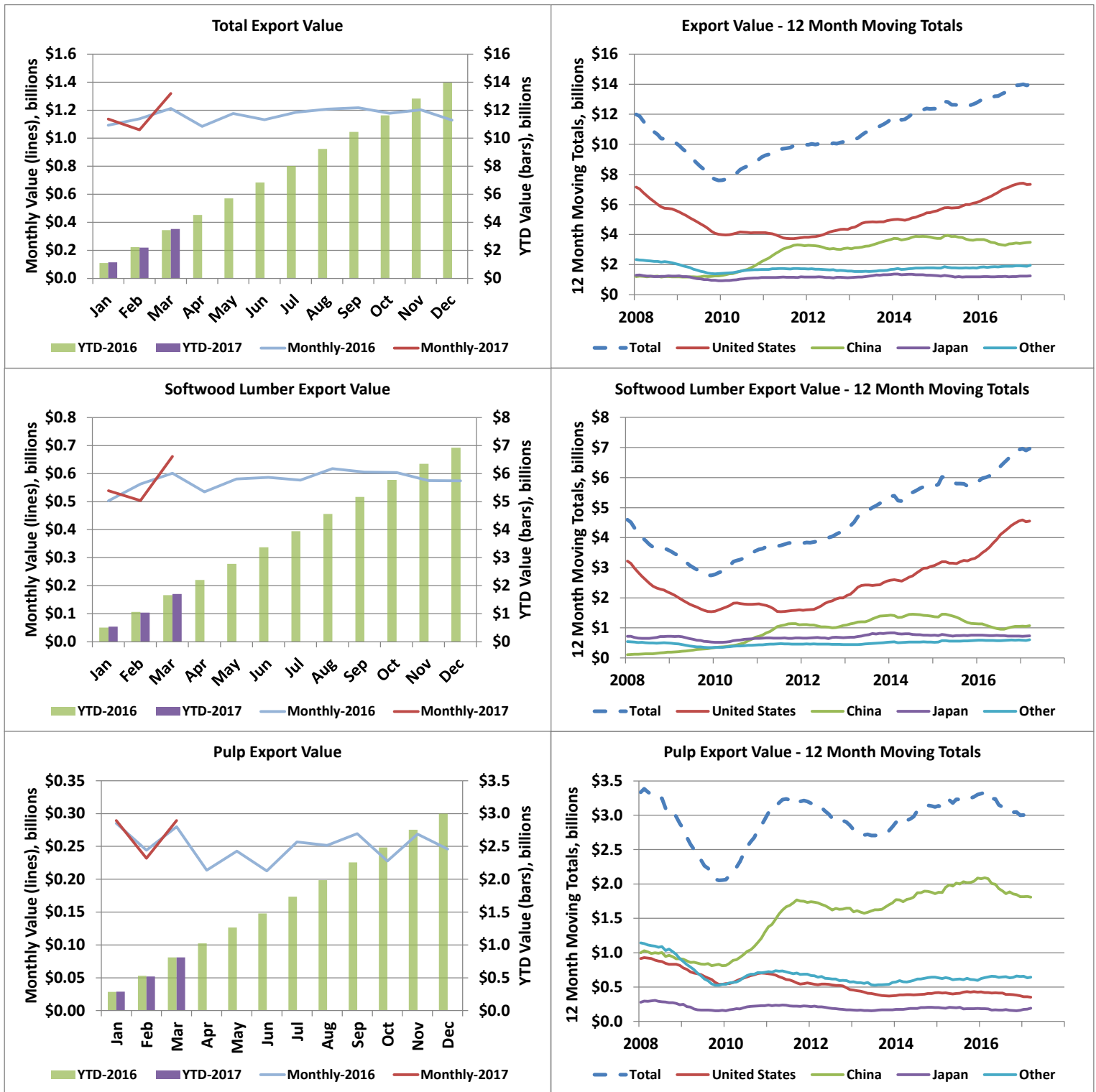
Value by Country (YTD)

	Value (\$m)	Change from 2016	Share of Value in	
			2017	Share in 2016
USA	\$ 1,755	-3%	50%	52%
China	\$ 945	8%	27%	25%
Japan	\$ 319	8%	9%	9%
Other Countries	\$ 497	6%	14%	14%
Total	\$ 3,517	2%	100%	100%

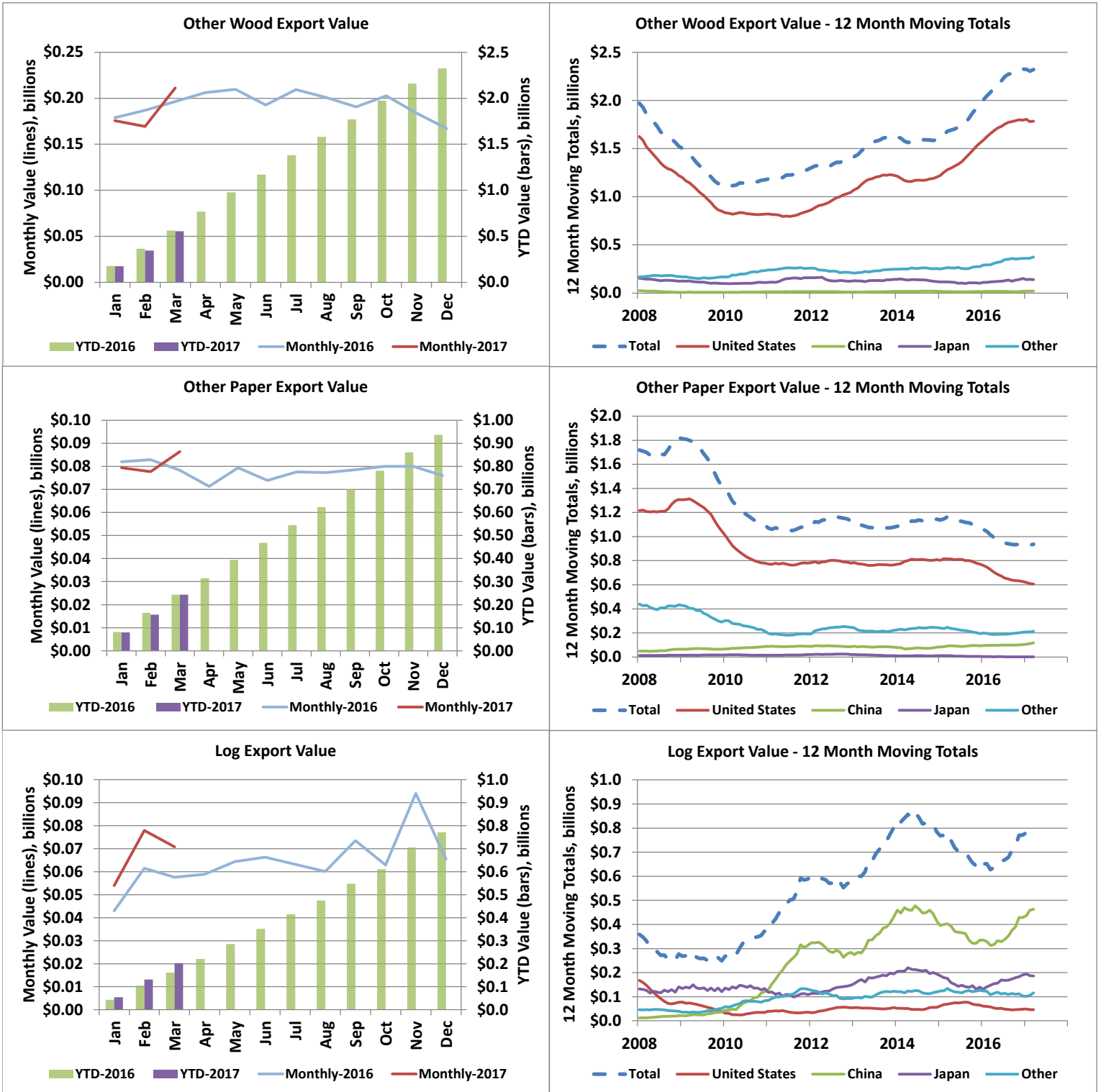
1. Includes wood products such as Veneer, OSB, Plywood, Siding, Poles, Chips, Ties, Mouldings, Panels, Furniture, Seats, Pellets, Shake and Shingles, etc.

2. Includes paper products such as Paper, Cards, Cartons, Rolls, Trays, Containers and Sacks & Bags, etc.

Export Values by Product and Destination



Export Values by Product and Destination



Value (C\$ Millions) - Current Month																
2017								Change in Total YoY	2016							
	Lumber	Pulp	Other Wood	Other Paper	Logs	Country Total	Country Share			Lumber	Pulp	Other Wood	Other Paper	Logs	Country Total	Country Share
U.S.A.	409	30	162	51	4	657	50%	2%	U.S.A.	389	37	159	55	4	644	53%
China	115	167	5	16	43	347	26%	7%	China	98	176	3	8	38	323	27%
Japan	69	26	11	0	15	121	9%	15%	Japan	65	11	12	0	17	105	9%
Other	68	66	32	18	9	194	15%	37%	Other	50	56	22	14	-1	141	12%
Product Total	661	289	211	86	71	1,319	100%	9%	Product Total	601	280	196	78	58	1,213	100%
Product Share	50%	22%	16%	7%	5%	100%			Product Share	50%	23%	16%	6%	5%	100%	
Change in Total YoY	10%	3%	8%	10%	23%	9%										

*China includes exports to Hong Kong.

Value (C\$ Millions) - Year to Date																
2017								Change in Total YoY	2016							
	Lumber	Pulp	Other Wood	Other Paper	Logs	Country Total	Country Share			Lumber	Pulp	Other Wood	Other Paper	Logs	Country Total	Country Share
U.S.A.	1,088	80	430	144	13	1,755	50%	-3%	U.S.A.	1,086	98	440	165	15	1,805	52%
China	279	492	11	43	121	945	27%	8%	China	258	493	9	26	87	874	25%
Japan	180	68	28	0	43	319	9%	8%	Japan	173	36	38	1	48	297	9%
Other	157	171	88	57	25	497	14%	6%	Other	150	182	74	51	11	469	14%
Product Total	1,704	811	556	243	203	3,517	100%	2%	Product Total	1,667	809	562	243	162	3,444	100%
Product Share	48%	23%	16%	7%	6%	100%			Product Share	48%	24%	16%	7%	5%	100%	
Change in Total YoY	2%	0%	-1%	0%	25%	2%										

Quantity (Thousands) - Current Month										
2017			Change YoY				2016			
	Lumber (m ³)	Pulp (tonnes)	Logs (m ³)	Lumber	Pulp	Logs		Lumber (m ³)	Pulp (tonnes)	Logs (m ³)
U.S.A.	1,479	35	36	-19%	-25%	-12%	U.S.A.	1,825	46	40
China	539	220	307	-12%	-10%	-4%	China	609	245	322
Japan	191	32	111	-4%	121%	-16%	Japan	199	15	133
Other	172	90	81	20%	17%	906%	Other	143	77	8
Total	2,381	377	535	-14%	-2%	6%	Total	2,777	383	503
Change in Total YoY	-14%	-2%	6%							

Quantity (Thousands) - Year to Date										
2017			Change YoY				2016			
	Lumber (m ³)	Pulp (tonnes)	Logs (m ³)	Lumber	Pulp	Logs		Lumber (m ³)	Pulp (tonnes)	Logs (m ³)
U.S.A.	4,073	95	106	-13%	-15%	-12%	U.S.A.	4,679	112	120
China	1,385	670	952	-14%	-2%	30%	China	1,607	683	735
Japan	510	87	317	1%	91%	-12%	Japan	505	46	360
Other	405	234	203	-4%	-1%	93%	Other	423	236	105
Total	6,374	1,087	1,579	-12%	1%	20%	Total	7,213	1,077	1,320
Change in Total YoY	-12%	1%	20%							

Share of Value - 2017 YTD						
Country	Lumber	Pulp	Other Wood	Other Paper	Logs	Country Share
U.S.A.	64%	10%	77%	59%	7%	50%
China	16%	61%	2%	17%	60%	27%
Japan	11%	8%	5%	0%	21%	9%
Other	9%	21%	16%	23%	12%	14%
Total	100%	100%	100%	100%	100%	100%
Product Share	48%	23%	16%	7%	6%	100%

Share of Quantity - 2017 YTD					
Country	Lumber	Pulp	Logs	Panels	Pellets
U.S.A.	64%	9%	7%	84%	2%
China	22%	62%	60%	2%	0%
Japan	8%	8%	20%	7%	8%
South Korea	1%	8%	13%	1%	9%
Indonesia	0%	6%	0%	0%	0%
U.K	0%	0%	0%	1%	70%
Other	5%	7%	0%	5%	12%
Total	100%	100%	100%	100%	100%

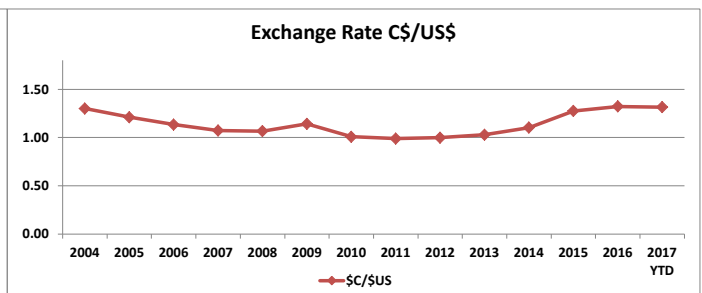
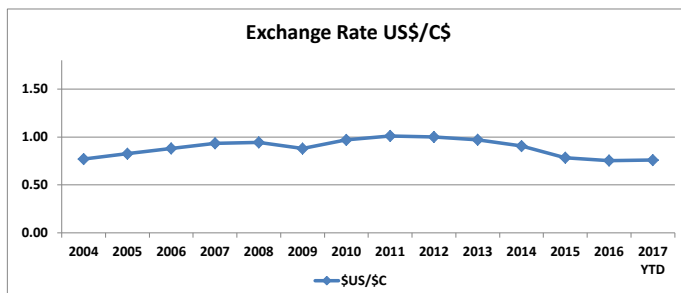
*Panels include OSB, plywood, particleboard, and fibreboard

B.C. Forest Product Export Value (C\$ Million) by Market, 2004 to 2017 YTD														
Country	2004	2005	2006	2007	2008	2009	2010	2011	2012	2013	2014	2015	2016	2017 YTD
U.S.A.	9,662	9,572	8,816	7,373	5,613	4,017	4,125	3,825	4,344	4,973	5,532	6,132	7,393	1,755
China	807	731	890	1,212	1,196	1,253	2,205	3,252	3,107	3,662	3,804	3,741	3,412	929
Japan	2,130	1,677	1,680	1,350	1,241	933	1,136	1,178	1,135	1,343	1,257	1,188	1,230	319
Other	2,482	2,154	2,175	2,347	2,057	1,400	1,677	1,729	1,574	1,676	1,804	1,815	1,919	514
Total	15,081	14,134	13,560	12,282	10,107	7,602	9,143	9,985	10,159	11,654	12,397	12,876	13,955	3,517

B.C. Forest Product Export Value (C\$ Million) by Product, 2004 to 2017 YTD														
Products Category	2004	2005	2006	2007	2008	2009	2010	2011	2012	2013	2014	2015	2016	2017 YTD
Lumber (softwood)	6,895	6,272	5,849	4,773	3,606	2,749	3,558	3,833	4,204	5,311	5,754	5,897	6,924	1,704
Pulp	3,033	2,643	2,887	3,379	2,878	2,056	2,939	3,200	2,852	2,831	3,121	3,301	2,998	811
Other Wood Products	2,742	2,679	2,440	2,022	1,524	1,129	1,175	1,284	1,394	1,633	1,594	1,948	2,325	556
Other Paper Products	1,986	2,006	1,897	1,739	1,821	1,419	1,098	1,079	1,132	1,077	1,144	1,066	937	243
Logs	425	534	487	369	278	249	373	588	577	802	784	666	771	203
Total	14,353	12,997	15,081	14,134	13,560	12,282	10,107	8,239	9,143	9,985	10,159	11,654	12,396	3,517

B.C. Forest Product Export Quantity (millions) by Product, 2004 to 2017 YTD														
Products Category	2004	2005	2006	2007	2008	2009	2010	2011	2012	2013	2014	2015	2016	2017 YTD
Lumber (softwood) - m ³	32.11	33.30	32.83	28.25	21.21	17.82	20.85	22.84	24.16	25.88	25.85	26.21	29.24	6.37
Pulp - tonnes	4.69	4.45	4.73	4.87	3.95	3.29	3.79	4.10	4.45	4.15	4.14	4.27	4.07	1.09
Logs - m ³	3.46	4.77	4.31	3.34	2.62	2.46	3.74	5.45	5.71	6.67	6.27	5.57	6.28	1.58
Panels - m ³	2.59	2.53	2.90	2.68	1.86	1.25	1.10	1.63	1.57	1.67	1.52	1.78	2.14	0.51
Pellets - tonnes	0.39	0.41	0.51	0.63	0.68	0.76	1.06	1.22	1.17	1.28	1.29	1.26	1.93	0.46

*Panels include OSB, plywood, particleboard, and fibreboard. Veneer is excluded.



Source: OANDA Additional exchange rates will be included in the near future

Additional annual data and charts can be found in the annual Economic State of B.C.'s Forest Sector

Export Quantities by Product and Destination

