

## B.C. Forest Product Exports – June 2017

### Highlights for Year-to-Date (YTD)

B.C. export values are up **5%** for 2017 YTD June compared to the same period in 2016 (**\$7.16** billion vs. **\$6.84**). Lumber value is up **2%** (volumes are down **-12%**). Pulp export value is up (**13%**). The value of Other Wood Products<sup>1</sup> has declined (**-2%**). The value of Other Paper Products<sup>2</sup> is up (**6%**).

In terms of value by destination country China (**16%**) and Japan (**10%**) are up. Value to Other countries (**12%**) is also up. The value to the United States (**-3%**) is down slightly.

### Value and Quantity by Product (YTD)

	Value		Quantity	
	Value (\$m)	Change from 2016	Quantity (thousands)	Change from 2016
Lumber	\$ 3,423	<b>2%</b>	12,963 m3	<b>-12%</b>
Pulp	\$ 1,675	<b>13%</b>	2167 t	<b>7%</b>
Other Wood	\$ 1,146	<b>-2%</b>	-	-
Other Paper	\$ 496	<b>6%</b>	-	-
Logs	\$ 419	<b>19%</b>	3,173 m3	<b>10%</b>
<b>Total</b>	<b>\$ 7,159</b>	<b>5%</b>	-	-

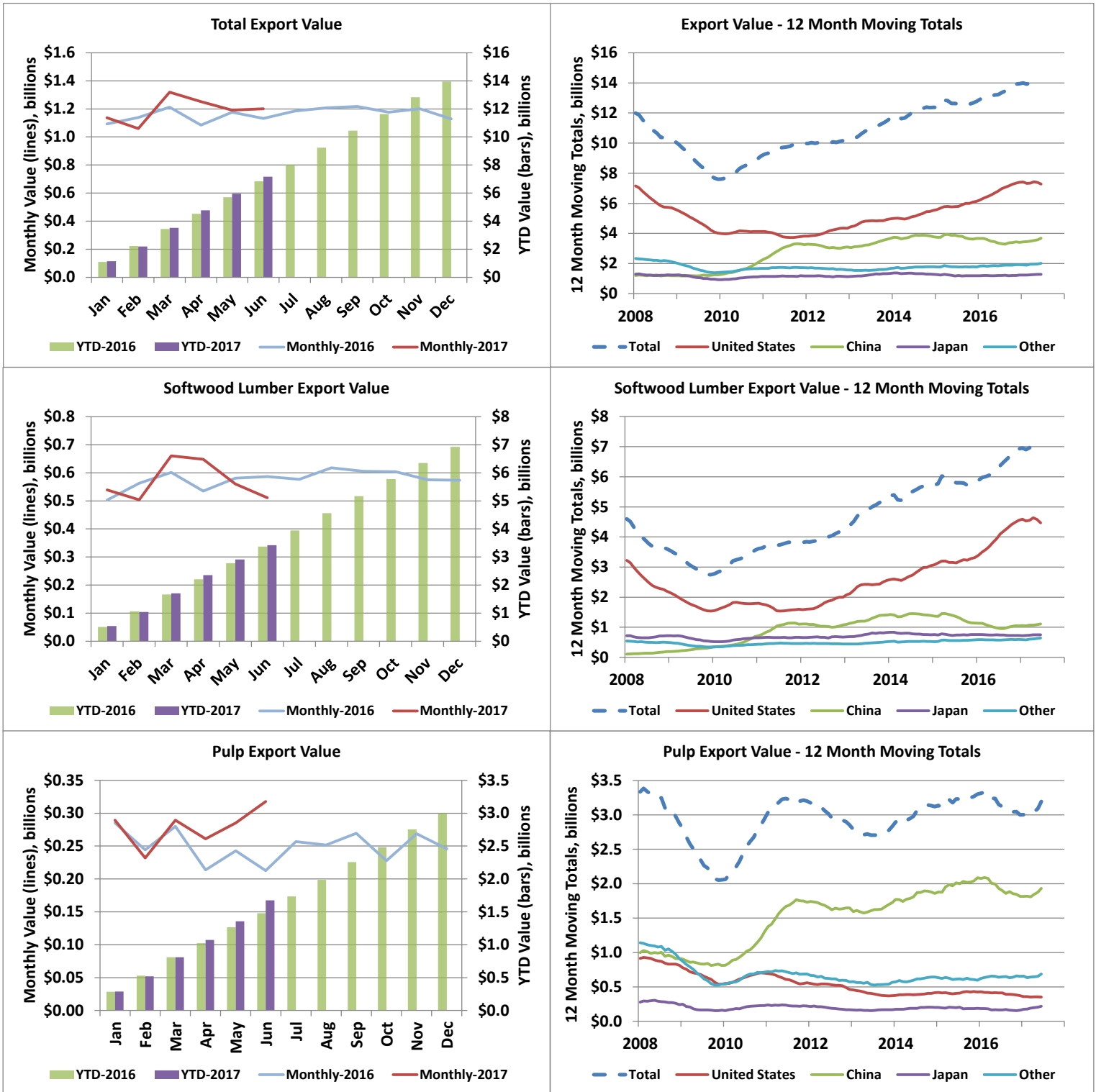
### Value by Country (YTD)

	Value (\$m)	Change from 2016	Share of Value in	
			2017	Share in 2016
USA	\$ 3,536	<b>-3%</b>	<b>49%</b>	53%
China	\$ 1,958	<b>16%</b>	<b>27%</b>	25%
Japan	\$ 649	<b>10%</b>	<b>9%</b>	9%
Other Countries	\$ 1,015	<b>12%</b>	<b>14%</b>	13%
<b>Total</b>	<b>\$ 7,159</b>	<b>5%</b>	<b>100%</b>	<b>100%</b>

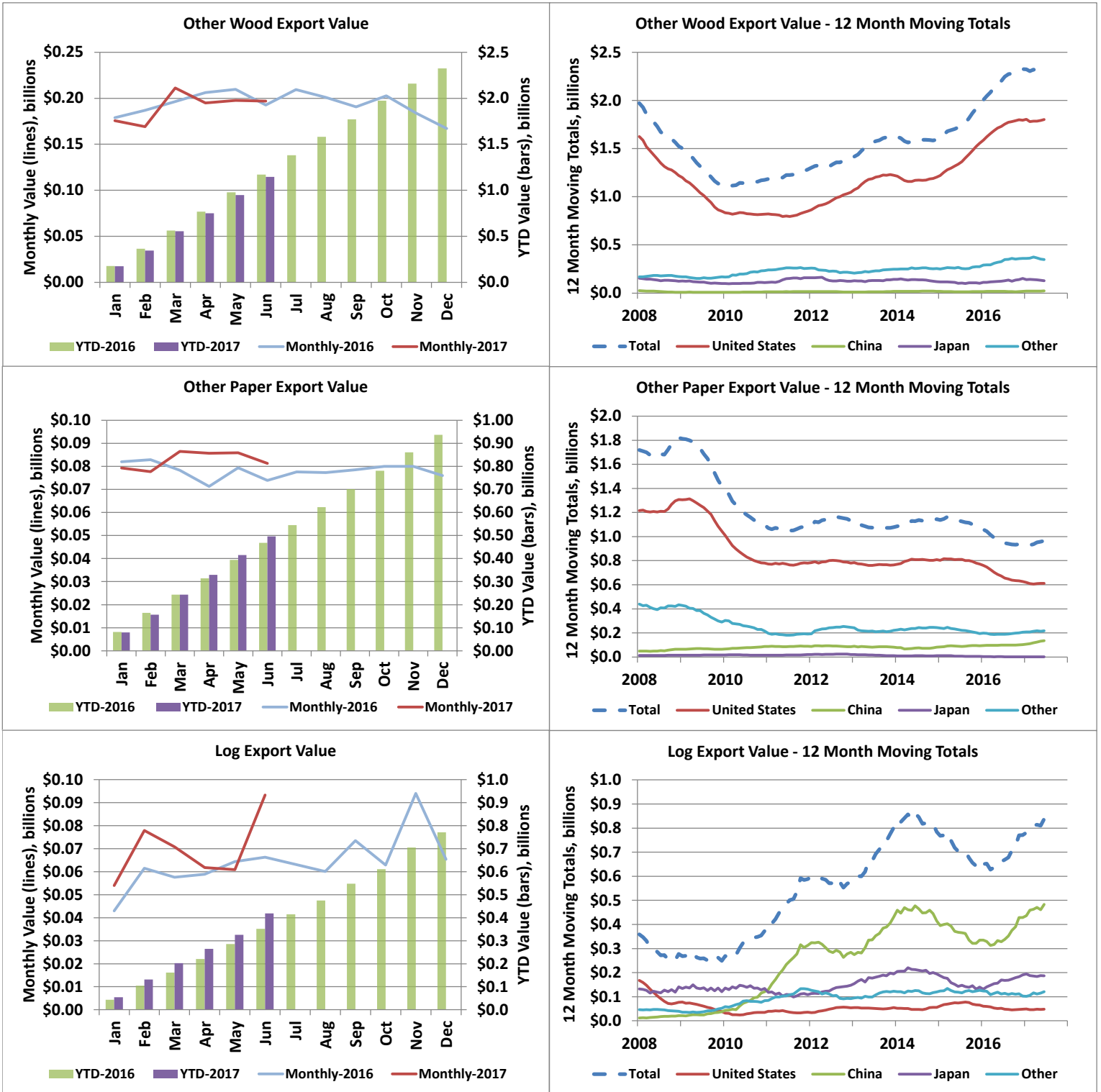
1. Includes wood products such as Veneer, OSB, Plywood, Siding, Poles, Chips, Ties, Mouldings, Panels, Furniture, Seats, Pellets, Shake and Shingles, etc.

2. Includes paper products such as Paper, Cards, Cartons, Rolls, Trays, Containers and Sacks & Bags, etc.

## Export Values by Product and Destination



## Export Values by Product and Destination



Value (C\$ Millions) - Current Month																
2017								Change in Total YoY	2016							
	Lumber	Pulp	Other Wood	Other Paper	Logs	Country Total	Country Share			Lumber	Pulp	Other Wood	Other Paper	Logs	Country Total	Country Share
U.S.A.	289	29	159	51	5	531	44%	-16%	U.S.A.	402	29	150	51	4	635	56%
China	99	187	5	14	59	365	30%	41%	China	74	132	4	10	39	259	23%
Japan	61	24	6	0	18	110	9%	6%	Japan	65	10	9	0	19	103	9%
Other	61	78	27	17	11	194	16%	44%	Other	45	42	30	13	4	134	12%
Product Total	511	318	197	81	93	1,200	100%	6%	Product Total	587	213	193	74	66	1,132	100%
Product Share	43%	26%	16%	7%	8%	100%			Product Share	52%	19%	17%	7%	6%	100%	
Change in Total YoY	-13%	49%	2%	10%	41%	6%										

\*China includes exports to Hong Kong.

Value (C\$ Millions) - Year to Date																
2017								Change in Total YoY	2016							
	Lumber	Pulp	Other Wood	Other Paper	Logs	Country Total	Country Share			Lumber	Pulp	Other Wood	Other Paper	Logs	Country Total	Country Share
U.S.A.	2,133	166	910	301	25	3,536	49%	-3%	U.S.A.	2,216	183	904	317	26	3,645	53%
China	578	1,023	22	86	248	1,958	27%	16%	China	513	902	21	56	197	1,689	25%
Japan	371	135	49	1	94	649	9%	10%	Japan	346	76	71	1	98	593	9%
Other	341	350	164	108	51	1,015	14%	12%	Other	294	316	174	94	31	910	13%
Product Total	3,423	1,675	1,146	496	419	7,159	100%	5%	Product Total	3,369	1,478	1,171	468	352	6,838	100%
Product Share	48%	23%	16%	7%	6%	100%			Product Share	49%	22%	17%	7%	5%	100%	
Change in Total YoY	2%	13%	-2%	6%	19%	5%										

Quantity (Thousands) - Current Month										
2017			Change YoY				2016			
	Lumber (m <sup>3</sup> )	Pulp (tonnes)	Logs (m <sup>3</sup> )	Lumber	Pulp	Logs		Lumber (m <sup>3</sup> )	Pulp (tonnes)	Logs (m <sup>3</sup> )
U.S.A.	1,258	34	39	-26%	-2%	-3%	U.S.A.	1,709	34	40
China	471	231	425	5%	21%	29%	China	450	191	329
Japan	162	28	140	-19%	126%	0%	Japan	199	12	140
Other	154	90	78	22%	59%	55%	Other	126	57	50
Total	2,045	383	682	-18%	30%	22%	Total	2,485	294	559
Change in Total YoY	-18%	30%	22%							

Quantity (Thousands) - Year to Date										
2017			Change YoY				2016			
	Lumber (m <sup>3</sup> )	Pulp (tonnes)	Logs (m <sup>3</sup> )	Lumber	Pulp	Logs		Lumber (m <sup>3</sup> )	Pulp (tonnes)	Logs (m <sup>3</sup> )
U.S.A.	8,217	195	206	-15%	-9%	-7%	U.S.A.	9,697	214	222
China	2,834	1,356	1,883	-11%	6%	16%	China	3,179	1,278	1,618
Japan	1,033	166	675	0%	66%	-9%	Japan	1,034	100	738
Other	879	450	409	7%	5%	35%	Other	823	429	302
Total	12,963	2,167	3,173	-12%	7%	10%	Total	14,733	2,021	2,880
Change in Total YoY	-12%	7%	10%							

Share of Value - 2017 YTD						
Country	Lumber	Pulp	Other Wood	Other Paper	Logs	Country Share
U.S.A.	62%	10%	79%	61%	6%	49%
China	17%	61%	2%	17%	59%	27%
Japan	11%	8%	4%	0%	22%	9%
Other	10%	21%	14%	22%	12%	14%
<b>Total</b>	<b>100%</b>	<b>100%</b>	<b>100%</b>	<b>100%</b>	<b>100%</b>	<b>100%</b>
<b>Product Share</b>	<b>48%</b>	<b>23%</b>	<b>16%</b>	<b>7%</b>	<b>6%</b>	<b>100%</b>

Share of Quantity - 2017 YTD					
Country	Lumber	Pulp	Logs	Panels	Pellets
U.S.A.	63%	9%	6%	84%	1%
China	22%	63%	59%	3%	0%
Japan	8%	8%	21%	8%	5%
South Korea	1%	7%	13%	0%	5%
Indonesia	0%	6%	0%	0%	0%
U.K	0%	0%	0%	1%	82%
Other	5%	8%	0%	4%	7%
<b>Total</b>	<b>100%</b>	<b>100%</b>	<b>100%</b>	<b>100%</b>	<b>100%</b>

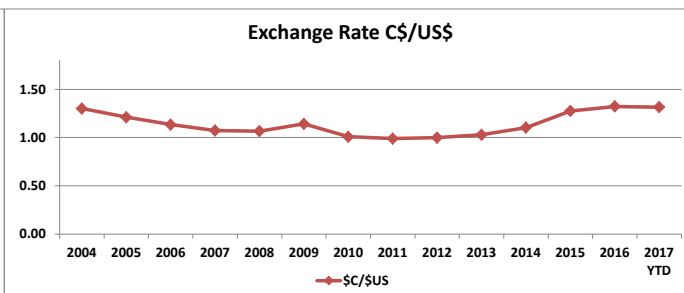
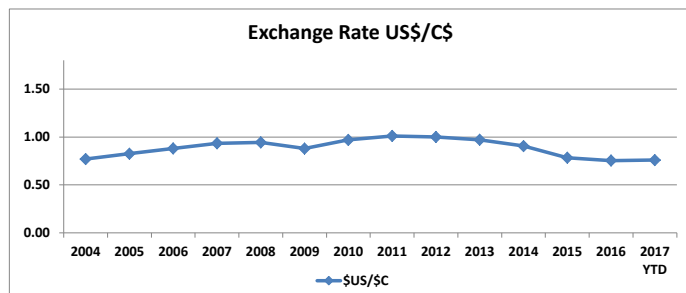
\*Panels include OSB, plywood, particleboard, and fibreboard

B.C. Forest Product Export Value (C\$ Million) by Market, 2004 to 2017 YTD														
Country	2004	2005	2006	2007	2008	2009	2010	2011	2012	2013	2014	2015	2016	2017 YTD
U.S.A.	9,662	9,572	8,816	7,373	5,613	4,017	4,125	3,825	4,344	4,973	5,532	6,132	7,393	3,536
China	807	731	890	1,212	1,196	1,253	2,205	3,252	3,107	3,662	3,804	3,741	3,412	1,926
Japan	2,130	1,677	1,680	1,350	1,241	933	1,136	1,178	1,135	1,343	1,257	1,188	1,230	649
Other	2,482	2,154	2,175	2,347	2,057	1,400	1,677	1,729	1,574	1,676	1,804	1,815	1,919	1,047
<b>Total</b>	<b>15,081</b>	<b>14,134</b>	<b>13,560</b>	<b>12,282</b>	<b>10,107</b>	<b>7,602</b>	<b>9,143</b>	<b>9,985</b>	<b>10,159</b>	<b>11,654</b>	<b>12,397</b>	<b>12,876</b>	<b>13,955</b>	<b>7,159</b>

B.C. Forest Product Export Value (C\$ Million) by Product, 2004 to 2017 YTD														
Products Category	2004	2005	2006	2007	2008	2009	2010	2011	2012	2013	2014	2015	2016	2017 YTD
Lumber (softwood)	6,895	6,272	5,849	4,773	3,606	2,749	3,558	3,833	4,204	5,311	5,754	5,897	6,924	3,423
Pulp	3,033	2,643	2,887	3,379	2,878	2,056	2,939	3,200	2,852	2,831	3,121	3,301	2,998	1,675
Other Wood Products	2,742	2,679	2,440	2,022	1,524	1,129	1,175	1,284	1,394	1,633	1,594	1,948	2,325	1,146
Other Paper Products	1,986	2,006	1,897	1,739	1,821	1,419	1,098	1,079	1,132	1,077	1,144	1,066	937	496
Logs	425	534	487	369	278	249	373	588	577	802	784	666	771	419
<b>Total</b>	<b>14,353</b>	<b>12,997</b>	<b>15,081</b>	<b>14,134</b>	<b>13,560</b>	<b>12,282</b>	<b>10,107</b>	<b>8,239</b>	<b>9,143</b>	<b>9,985</b>	<b>10,159</b>	<b>11,654</b>	<b>12,396</b>	<b>7,159</b>

B.C. Forest Product Export Quantity (millions) by Product, 2004 to 2017 YTD														
Products Category	2004	2005	2006	2007	2008	2009	2010	2011	2012	2013	2014	2015	2016	2017 YTD
Lumber (softwood) - m <sup>3</sup>	32.11	33.30	32.83	28.25	21.21	17.82	20.85	22.84	24.16	25.88	25.85	26.21	29.24	12.96
Pulp - tonnes	4.69	4.45	4.73	4.87	3.95	3.29	3.79	4.10	4.45	4.15	4.14	4.27	4.07	2.17
Logs - m <sup>3</sup>	3.46	4.77	4.31	3.34	2.62	2.46	3.74	5.45	5.71	6.67	6.27	5.57	6.28	3.17
Panels - m <sup>3</sup>	2.59	2.53	2.90	2.68	1.86	1.25	1.10	1.63	1.57	1.67	1.52	1.78	2.14	1.05
Pellets - tonnes	0.39	0.41	0.51	0.63	0.68	0.76	1.06	1.22	1.17	1.28	1.29	1.26	1.93	0.82

\*Panels include OSB, plywood, particleboard, and fibreboard. Veneer is excluded.



Source: OANDA Additional exchange rates will be included in the near future

Additional annual data and charts can be found in the annual Economic State of B.C.'s Forest Sector

## Export Quantities by Product and Destination

