

B.C. Forest Product Exports – July 2017

Highlights for Year-to-Date (YTD)

B.C. export values are up **3%** for 2017 YTD July compared to the same period in 2016 (**\$8.23** billion vs. **\$8.02**). Lumber value is down **-2%** (volumes are down **-13%**). Pulp export value is up (**12%**). The value of Other Wood Products¹ has declined (**-3%**). The value of Other Paper Products² is up (**6%**).

In terms of value by destination country China (**17%**) and Japan (**8%**) are up. Value to Other countries (**11%**) is also up. The value to the United States (**-7%**) is down.

Value and Quantity by Product (YTD)

	Value		Quantity	
	Value (\$m)	Change from 2016	Quantity (thousands)	Change from 2016
Lumber	\$ 3,878	-2%	14,925 m3	-13%
Pulp	\$ 1,946	12%	2511 t	6%
Other Wood	\$ 1,339	-3%	-	-
Other Paper	\$ 579	6%	-	-
Logs	\$ 488	18%	3,678 m3	9%
Total	\$ 8,231	3%	-	-

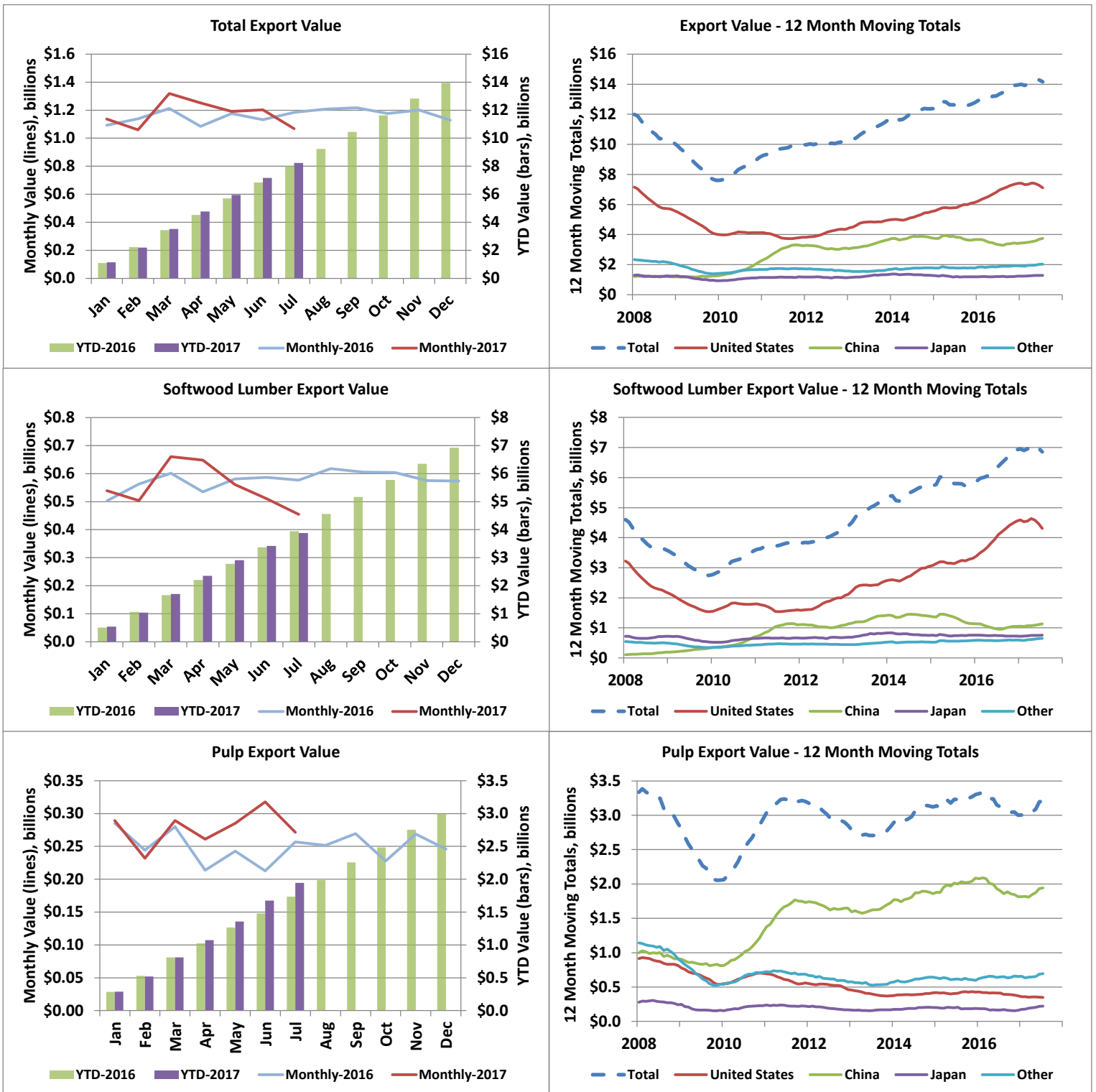
Value by Country (YTD)

	Value (\$m)	Change from 2016	Share of Value in	
			2017	Share in 2016
USA	\$ 4,015	-7%	49%	54%
China	\$ 2,271	17%	28%	24%
Japan	\$ 745	8%	9%	9%
Other Countries	\$ 1,200	11%	15%	14%
Total	\$ 8,231	3%	100%	100%

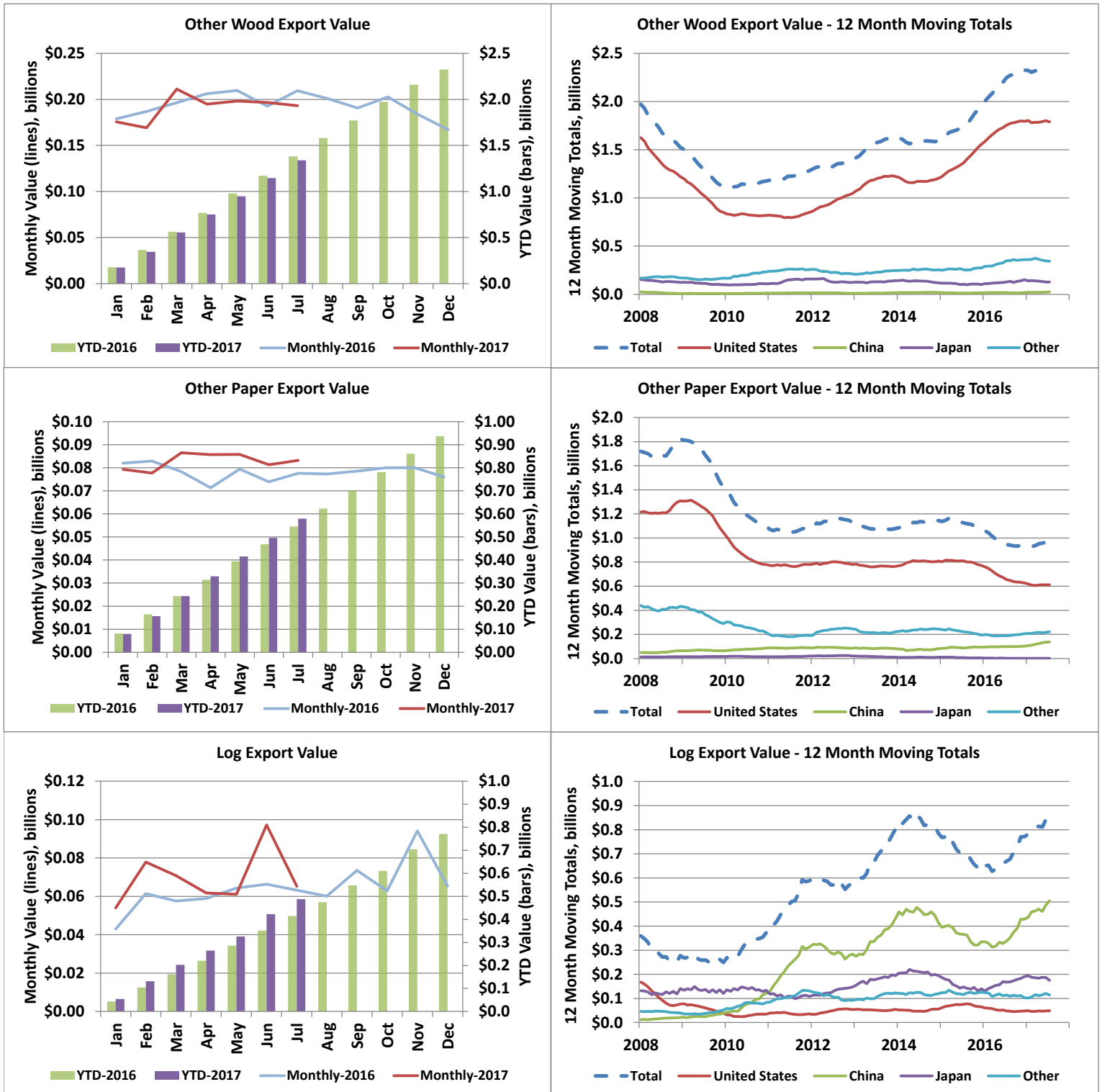
1. Includes wood products such as Veneer, OSB, Plywood, Siding, Poles, Chips, Ties, Mouldings, Panels, Furniture, Seats, Pellets, Shake and Shingles, etc.

2. Includes paper products such as Paper, Cards, Cartons, Rolls, Trays, Containers and Sacks & Bags, etc.

Export Values by Product and Destination



Export Values by Product and Destination



B.C. Forest Product Exports - July 2017

Value (C\$ Millions) - July																
2017								Change in Total YoY	2016							
	Lumber	Pulp	Other Wood	Other Paper	Logs	Country Total	Country Share			Lumber	Pulp	Other Wood	Other Paper	Logs	Country Total	Country Share
U.S.A.	243	35	143	51	6	478	45%	-27%	U.S.A.	405	38	155	50	5	653	55%
China	96	149	6	10	49	309	29%	21%	China	71	139	4	10	32	256	22%
Japan	62	17	11	0	5	96	9%	-4%	Japan	56	15	12	0	17	100	8%
Other	54	71	34	22	5	185	17%	6%	Other	45	65	38	18	10	175	15%
Product Total	455	272	193	83	65	1,068	100%	-10%	Product Total	577	257	209	78	63	1,184	100%
Product Share	43%	25%	18%	8%	6%	100%			Product Share	49%	22%	18%	7%	5%	100%	
Change in Total YoY	-21%	6%	-8%	7%	3%	-10%										

*China includes exports to Hong Kong.

Value (C\$ Millions) - Year to Date																
2017								Change in Total YoY	2016							
	Lumber	Pulp	Other Wood	Other Paper	Logs	Country Total	Country Share			Lumber	Pulp	Other Wood	Other Paper	Logs	Country Total	Country Share
U.S.A.	2,377	201	1,053	352	32	4,015	49%	-7%	U.S.A.	2,620	222	1,059	367	31	4,298	54%
China	674	1,172	28	96	301	2,271	28%	17%	China	584	1,042	25	66	228	1,945	24%
Japan	432	152	60	1	99	745	9%	8%	Japan	402	91	84	1	115	693	9%
Other	395	421	198	130	56	1,200	15%	11%	Other	339	381	212	112	41	1,085	14%
Product Total	3,878	1,946	1,339	579	488	8,231	100%	3%	Product Total	3,946	1,735	1,380	545	415	8,022	100%
Product Share	47%	24%	16%	7%	6%	100%			Product Share	49%	22%	17%	7%	5%	100%	
Change in Total YoY	-2%	12%	-3%	6%	18%	3%										

Quantity (Thousands) - July										
2017			Change YoY				2016			
	Lumber (m ³)	Pulp (tonnes)	Logs (m ³)	Lumber	Pulp	Logs		Lumber (m ³)	Pulp (tonnes)	Logs (m ³)
U.S.A.	1,170	43	57	-32%	5%	17%	U.S.A.	1,732	41	49
China	483	190	348	18%	-2%	46%	China	409	193	239
Japan	171	21	38	2%	13%	-71%	Japan	168	19	131
Other	139	90	40	23%	1%	-52%	Other	114	89	84
Total	1,963	344	483	-19%	0%	-4%	Total	2,423	342	502
Change in Total YoY	-19%	0%	-4%							

Quantity (Thousands) - Year to Date										
2017			Change YoY				2016			
	Lumber (m ³)	Pulp (tonnes)	Logs (m ³)	Lumber	Pulp	Logs		Lumber (m ³)	Pulp (tonnes)	Logs (m ³)
U.S.A.	9,388	238	263	-18%	-7%	-3%	U.S.A.	11,428	255	271
China	3,315	1,546	2,253	-8%	5%	21%	China	3,588	1,471	1,858
Japan	1,204	187	713	0%	58%	-18%	Japan	1,202	119	869
Other	1,018	540	449	9%	4%	17%	Other	937	518	384
Total	14,925	2,511	3,678	-13%	6%	9%	Total	17,156	2,364	3,382
Change in Total YoY	-13%	6%	9%							

B.C. Forest Product Exports - July 2017

Share of Value - 2017 YTD July						
Country	Lumber	Pulp	Other Wood	Other Paper	Logs	Country Share
U.S.A.	61%	10%	79%	61%	6%	49%
China	17%	60%	2%	17%	62%	28%
Japan	11%	8%	4%	0%	20%	9%
Other	10%	22%	15%	22%	12%	15%
Total	100%	100%	100%	100%	100%	100%
Product Share	47%	24%	16%	7%	6%	100%

Share of Quantity - 2017 YTD July					
Country	Lumber	Pulp	Logs	Panels	Pellets
U.S.A.	63%	9%	7%	83%	1%
China	22%	62%	61%	3%	0%
Japan	8%	7%	19%	8%	7%
South Korea	1%	7%	12%	0%	4%
Indonesia	0%	7%	0%	0%	0%
U.K	0%	0%	0%	1%	81%
Other	5%	8%	0%	4%	6%
Total	100%	100%	100%	100%	100%

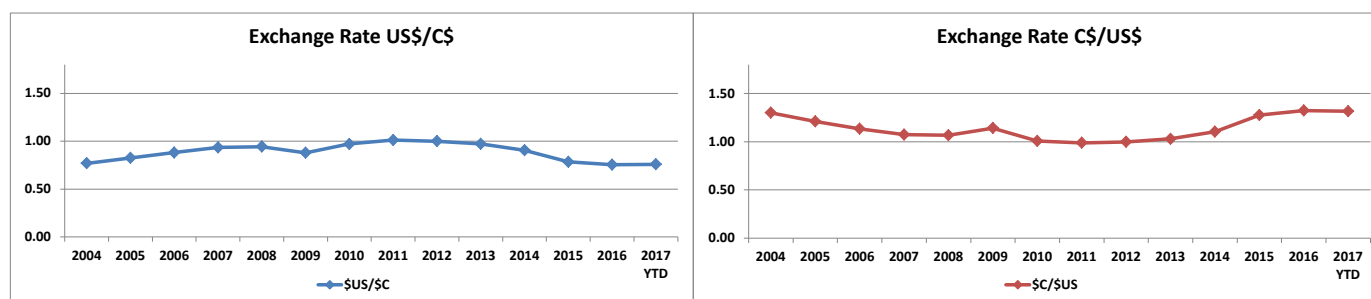
*Panels include OSB, plywood, particleboard, and fibreboard

B.C. Forest Product Export Value (C\$ Million) by Market, 2004 to 2017 YTD July														
Country	2004	2005	2006	2007	2008	2009	2010	2011	2012	2013	2014	2015	2016	2017 YTD
U.S.A.	9,662	9,572	8,816	7,373	5,613	4,017	4,125	3,825	4,344	4,973	5,532	6,132	7,393	4,015
China	807	731	890	1,212	1,196	1,253	2,205	3,252	3,107	3,662	3,804	3,741	3,412	2,235
Japan	2,130	1,677	1,680	1,350	1,241	933	1,136	1,178	1,135	1,343	1,257	1,188	1,230	745
Other	2,482	2,154	2,175	2,347	2,057	1,400	1,677	1,729	1,574	1,676	1,804	1,815	1,919	1,236
Total	15,081	14,134	13,560	12,282	10,107	7,602	9,143	9,985	10,159	11,654	12,397	12,876	13,955	8,231

B.C. Forest Product Export Value (C\$ Million) by Product, 2004 to 2017 YTD July														
Products Category	2004	2005	2006	2007	2008	2009	2010	2011	2012	2013	2014	2015	2016	2017 YTD
Lumber (softwood)	6,895	6,272	5,849	4,773	3,606	2,749	3,558	3,833	4,204	5,311	5,754	5,897	6,924	3,878
Pulp	3,033	2,643	2,887	3,379	2,878	2,056	2,939	3,200	2,852	2,831	3,121	3,301	2,998	1,946
Other Wood Products	2,742	2,679	2,440	2,022	1,524	1,129	1,175	1,284	1,394	1,633	1,594	1,948	2,325	1,339
Other Paper Products	1,986	2,006	1,897	1,739	1,821	1,419	1,098	1,079	1,132	1,077	1,144	1,066	937	579
Logs	425	534	487	369	278	249	373	588	577	802	784	666	771	488
Total	14,353	12,997	15,081	14,134	13,560	12,282	10,107	8,239	9,143	9,985	10,159	11,654	12,396	8,231

B.C. Forest Product Export Quantity (millions) by Product, 2004 to 2017 YTD July														
Products Category	2004	2005	2006	2007	2008	2009	2010	2011	2012	2013	2014	2015	2016	2017 YTD
Lumber (softwood) - m ³	32.11	33.30	32.83	28.25	21.21	17.82	20.85	22.84	24.16	25.88	25.85	26.21	29.24	14.93
Pulp - tonnes	4.69	4.45	4.73	4.87	3.95	3.29	3.79	4.10	4.45	4.15	4.14	4.27	4.07	2.51
Logs - m ³	3.46	4.77	4.31	3.34	2.62	2.46	3.74	5.45	5.71	6.67	6.27	5.57	6.28	3.68
Panels - m ³	2.59	2.53	2.90	2.68	1.86	1.25	1.10	1.63	1.57	1.67	1.52	1.78	2.14	1.23
Pellets - tonnes	0.39	0.41	0.51	0.63	0.68	0.76	1.06	1.22	1.17	1.28	1.29	1.26	1.93	1.02

*Panels include OSB, plywood, particleboard, and fibreboard. Veneer is excluded.



Source: OANDA Additional exchange rates will be included in the near future

Additional annual data and charts can be found in the annual Economic State of B.C.'s Forest Sector

Export Quantities by Product and Destination

