

B.C. Forest Product Exports – January 2017

Highlights for Year-to-Date (YTD)

B.C. export values are up **+4%** in 2017 YTD January compared to the same period in 2016 (**\$1.14** billion vs. **\$1.09**). This is primarily due to lumber value being up **+7%** (volumes are down **-2%**). Pulp export value is up (**+2%**). The value of Other Wood Products¹ has declined (**-2%**), and the value of Other Paper Products² has declined (**-3%**), with both these changes being driven by the United States.

In terms of value by destination country the United States (**+5%**) and China (**+9%**) are driving the growth. Export value to Japan is down (**-1%**) and so is the value to Other countries (**-4%**).

Value and Quantity by Product (YTD)

	Value		Quantity	
	Value (\$m)	Change from 2016	Quantity (thousands)	Change from 2016
Lumber	\$ 539	7%	2,011 m3	-2%
Pulp	\$ 289	2%	398 t	9%
Other Wood	\$ 176	-2%	-	-
Other Paper	\$ 79	-3%	-	-
Logs	\$ 54	26%	444 m3	27%
Total	\$ 1,138	4%	-	-

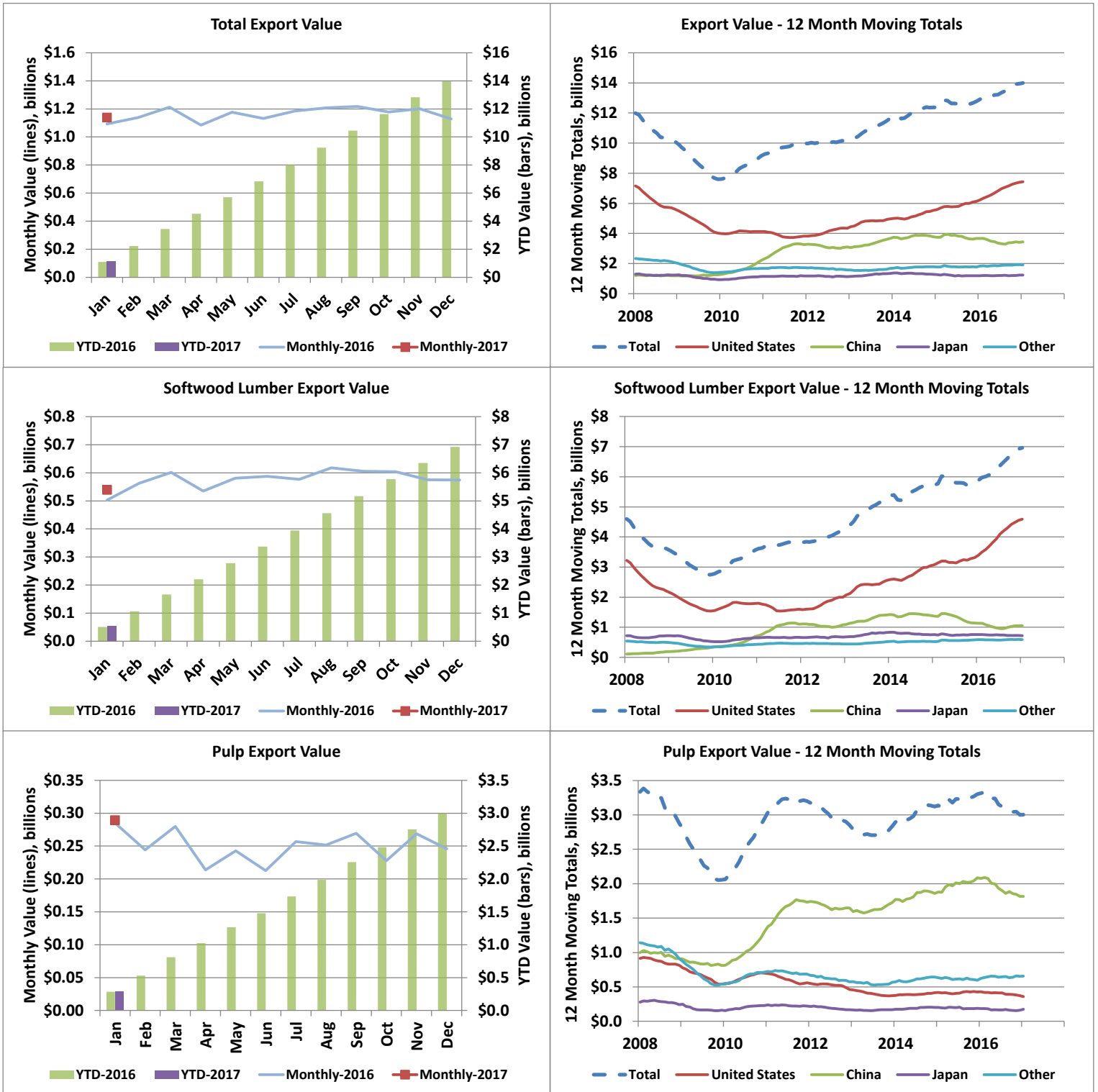
Value by Country (YTD)

	Value (\$m)	Change from 2016	Share of Value in	
			2017	Share in 2016
USA	\$ 589	5%	52%	51%
China	\$ 287	9%	25%	24%
Japan	\$ 96	-1%	8%	9%
Other Countries	\$ 166	-4%	15%	16%
Total	\$ 1,138	4%	100%	100%

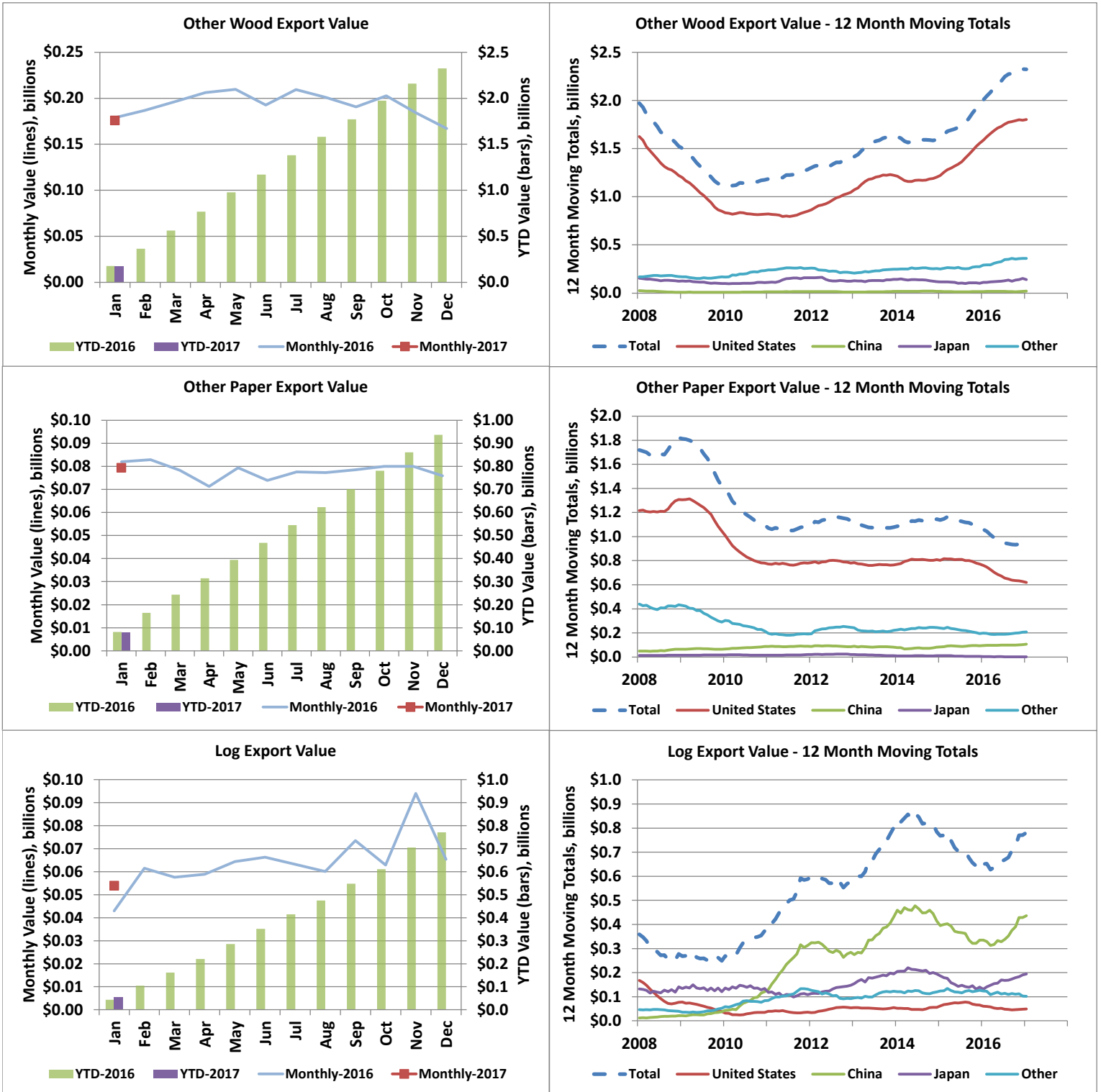
1. Includes wood products such as Veneer, OSB, Plywood, Siding, Poles, Chips, Ties, Mouldings, Panels, Furniture, Seats, Pellets, Shake and Shingles, etc.

2. Includes paper products such as Paper, Cards, Cartons, Rolls, Trays, Containers and Sacks & Bags, etc.

Export Values by Product and Destination



Export Values by Product and Destination



Value (C\$ Millions) - Current Month																
2017								Change in Total YoY	2016							
	Lumber	Pulp	Other Wood	Other Paper	Logs	Country Total	Country Share			Lumber	Pulp	Other Wood	Other Paper	Logs	Country Total	Country Share
U.S.A.	372	25	141	46	5	589	52%	5%	U.S.A.	331	38	133	54	4	559	51%
China	74	165	2	13	33	287	25%	9%	China	66	164	1	8	26	264	24%
Japan	52	27	5	0	12	96	8%	-1%	Japan	58	14	17	0	8	97	9%
Other	41	72	28	20	5	166	15%	-4%	Other	49	70	28	20	5	172	16%
Product Total	539	289	176	79	54	1,138	100%	4%	Product Total	503	285	179	82	43	1,092	100%
Product Share	47%	25%	15%	7%	5%	100%			Product Share	46%	26%	16%	8%	4%	100%	
Change in Total YoY	7%	2%	-2%	-3%	26%	4%										

*China includes exports to Hong Kong.

Value (C\$ Millions) - Year to Date																
2017								Change in Total YoY	2016							
	Lumber	Pulp	Other Wood	Other Paper	Logs	Country Total	Country Share			Lumber	Pulp	Other Wood	Other Paper	Logs	Country Total	Country Share
U.S.A.	372	25	141	46	5	589	52%	5%	U.S.A.	331	38	133	54	4	559	51%
China	74	165	2	13	33	287	25%	9%	China	66	164	1	8	26	264	24%
Japan	52	27	5	0	12	96	8%	-1%	Japan	58	14	17	0	8	97	9%
Other	41	72	28	20	5	166	15%	-4%	Other	49	70	28	20	5	172	16%
Product Total	539	289	176	79	54	1,138	100%	4%	Product Total	503	285	179	82	43	1,092	100%
Product Share	47%	25%	15%	7%	5%	100%			Product Share	46%	26%	16%	8%	4%	100%	
Change in Total YoY	7%	2%	-2%	-3%	26%	4%										

Quantity (Thousands) - Current Month										
2017			Change YoY			2016				
	Lumber (m ³)	Pulp (tonnes)	Logs (m ³)	Lumber	Pulp	Logs		Lumber (m ³)	Pulp (tonnes)	Logs (m ³)
U.S.A.	1,376	31	36	3%	-20%	24%	U.S.A.	1,331	38	29
China	373	230	284	-13%	4%	33%	China	428	221	214
Japan	154	36	84	-7%	109%	34%	Japan	165	17	62
Other	108	101	40	-21%	15%	-10%	Other	137	87	44
Total	2,011	398	444	-2%	9%	27%	Total	2,062	364	349
Change in Total YoY	-2%	9%	27%							

Quantity (Thousands) - Year to Date										
2017			Change YoY			2016				
	Lumber (m ³)	Pulp (tonnes)	Logs (m ³)	Lumber	Pulp	Logs		Lumber (m ³)	Pulp (tonnes)	Logs (m ³)
U.S.A.	1,376	31	36	3%	-20%	24%	U.S.A.	1,331	38	29
China	373	230	284	-13%	4%	32%	China	428	221	216
Japan	154	36	84	-7%	109%	34%	Japan	165	17	62
Other	108	101	40	-21%	15%	-5%	Other	137	87	42
Total	2,011	398	444	-2%	9%	27%	Total	2,062	364	349
Change in Total YoY	-2%	9%	27%							

B.C. Forest Product Exports - January 2017

Share of Value - 2017 YTD						
Country	Lumber	Pulp	Other Wood	Other Paper	Logs	Country Share
U.S.A.	69%	9%	80%	58%	9%	52%
China	14%	57%	1%	16%	61%	25%
Japan	10%	9%	3%	0%	22%	8%
Other	8%	25%	16%	26%	8%	15%
Total	100%	100%	100%	100%	100%	100%
Product Share	47%	25%	15%	7%	5%	100%

Share of Quantity - 2017 YTD					
Country	Lumber	Pulp	Logs	Panels	Pellets
U.S.A.	68%	8%	8%	85%	3%
China	19%	58%	64%	1%	0%
Japan	8%	9%	19%	7%	0%
South Korea	1%	11%	9%	1%	1%
Indonesia	0%	8%	0%	0%	0%
U.K	0%	0%	0%	1%	95%
Other	4%	6%	0%	5%	0%
Total	100%	100%	100%	100%	100%

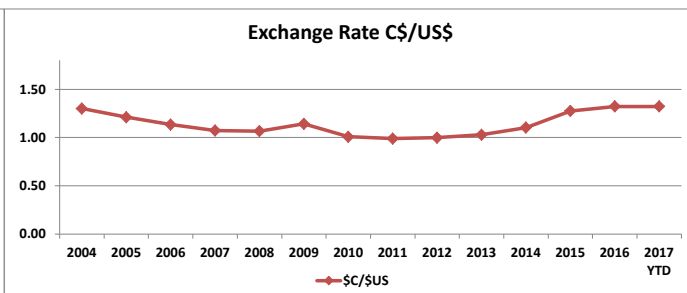
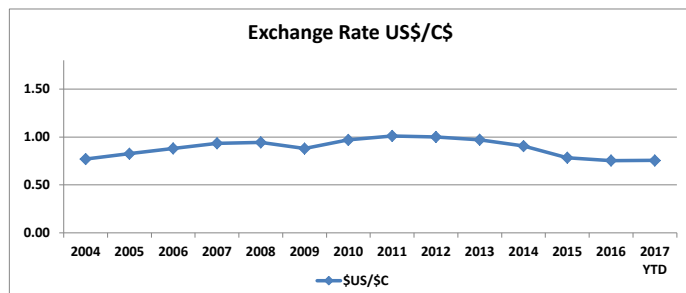
*Panels include OSB, plywood, particleboard, and fibreboard

B.C. Forest Product Export Value (C\$ Million) by Market, 2004 to 2017 YTD														
Country	2004	2005	2006	2007	2008	2009	2010	2011	2012	2013	2014	2015	2016	2017 YTD
U.S.A.	9,662	9,572	8,816	7,373	5,613	4,017	4,125	3,825	4,344	4,973	5,532	6,132	7,393	589
China	807	731	890	1,212	1,196	1,253	2,205	3,252	3,107	3,662	3,804	3,741	3,412	285
Japan	2,130	1,677	1,680	1,350	1,241	933	1,136	1,178	1,135	1,343	1,257	1,188	1,230	96
Other	2,482	2,154	2,175	2,347	2,057	1,400	1,677	1,729	1,574	1,676	1,804	1,815	1,919	167
Total	15,081	14,134	13,560	12,282	10,107	7,602	9,143	9,985	10,159	11,654	12,397	12,876	13,955	1,138

B.C. Forest Product Export Value (C\$ Million) by Product, 2004 to 2017 YTD														
Products Category	2004	2005	2006	2007	2008	2009	2010	2011	2012	2013	2014	2015	2016	2017 YTD
Lumber (softwood)	6,895	6,272	5,849	4,773	3,606	2,749	3,558	3,833	4,204	5,311	5,754	5,897	6,924	539
Pulp	3,033	2,643	2,887	3,379	2,878	2,056	2,939	3,200	2,852	2,831	3,121	3,301	2,998	289
Other Wood Products	2,742	2,679	2,440	2,022	1,524	1,129	1,175	1,284	1,394	1,633	1,594	1,948	2,325	176
Other Paper Products	1,986	2,006	1,897	1,739	1,821	1,419	1,098	1,079	1,132	1,077	1,144	1,066	937	79
Logs	425	534	487	369	278	249	373	588	577	802	784	666	771	54
Total	14,353	12,997	15,081	14,134	13,560	12,282	10,107	8,239	9,143	9,985	10,159	11,654	12,396	1,138

B.C. Forest Product Export Quantity (millions) by Product, 2004 to 2017 YTD														
Products Category	2004	2005	2006	2007	2008	2009	2010	2011	2012	2013	2014	2015	2016	2017 YTD
Lumber (softwood) - m ³	32.11	33.30	32.83	28.25	21.21	17.82	20.85	22.84	24.16	25.88	25.85	26.21	29.24	2.01
Pulp - tonnes	4.69	4.45	4.73	4.87	3.95	3.29	3.79	4.10	4.45	4.15	4.14	4.27	4.07	0.40
Logs - m ³	3.46	4.77	4.31	3.34	2.62	2.46	3.74	5.45	5.71	6.67	6.27	5.57	6.28	0.44
Panels - m ³	2.59	2.53	2.90	2.68	1.86	1.25	1.10	1.63	1.57	1.67	1.52	1.78	2.14	0.16
Pellets - tonnes	0.39	0.41	0.51	0.63	0.68	0.76	1.06	1.22	1.17	1.28	1.29	1.26	1.93	0.13

*Panels include OSB, plywood, particleboard, and fibreboard. Veneer is excluded.



Source: OANDA Additional exchange rates will be included in the near future

Additional annual data and charts can be found in the annual Economic State of B.C.'s Forest Sector

Export Quantities by Product and Destination

