

## B.C. Forest Product Exports – August 2017

### Highlights for Year-to-Date (YTD)

B.C. export values are up **1%** for 2017 YTD August compared to the same period in 2016 (\$**9.37** billion vs. \$**9.23**). Lumber value is down **-4%** (volumes are down **-14%**). Pulp export value is up (**13%**). The value of Other Wood Products<sup>1</sup> has declined (**-3%**). The value of Other Paper Products<sup>2</sup> is up (**5%**).

In terms of value by destination country China (**16%**) and Japan (**8%**) are up. Value to Other countries (**11%**) is also up. The value to the United States (**-8%**) is down.

### Value and Quantity by Product (YTD)

	Value		Quantity	
	Value (\$m)	Change from 2016	Quantity (thousands)	Change from 2016
Lumber	\$ 4,378	<b>-4%</b>	16,910 m3	<b>-14%</b>
Pulp	\$ 2,244	<b>13%</b>	2892 t	<b>7%</b>
Other Wood	\$ 1,531	<b>-3%</b>	-	-
Other Paper	\$ 653	<b>5%</b>	-	-
Logs	\$ 562	<b>18%</b>	4,244 m3	<b>10%</b>
<b>Total</b>	<b>\$ 9,367</b>	<b>1%</b>	-	-

### Value by Country (YTD)

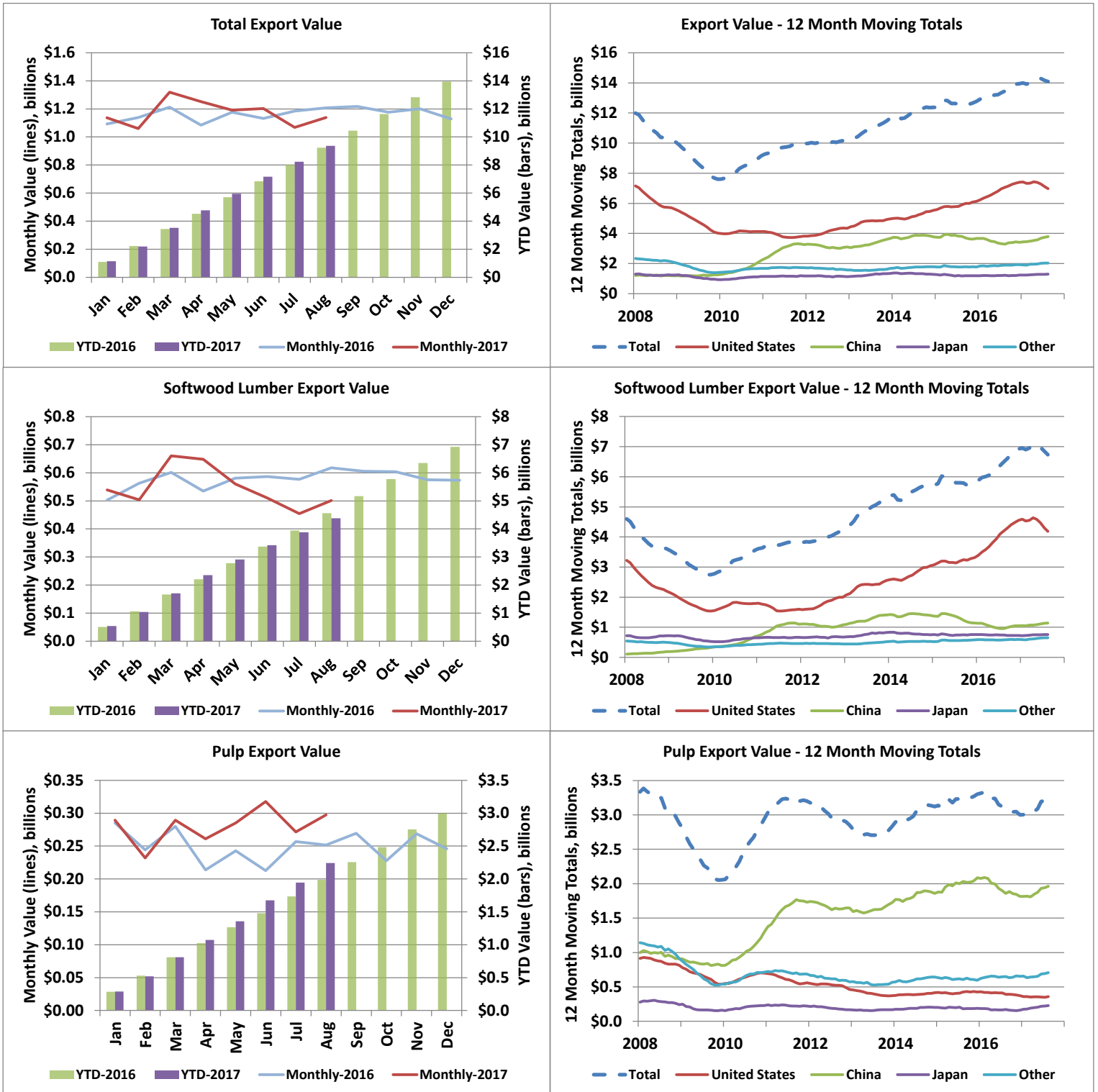
	Value (\$m)	Change from 2016	Share of Value in	
			2017*	Share in 2016
USA	\$ 4,548	<b>-8%</b>	<b>49%</b>	54%
China	\$ 2,585	<b>16%</b>	<b>28%</b>	24%
Japan	\$ 862	<b>8%</b>	<b>9%</b>	9%
Other Countries	\$ 1,373	<b>11%</b>	<b>15%</b>	13%
<b>Total</b>	<b>\$ 9,367</b>	<b>1%</b>	<b>100%</b>	<b>100%</b>

\*Colour denotes if share is up or down compared to previous year.

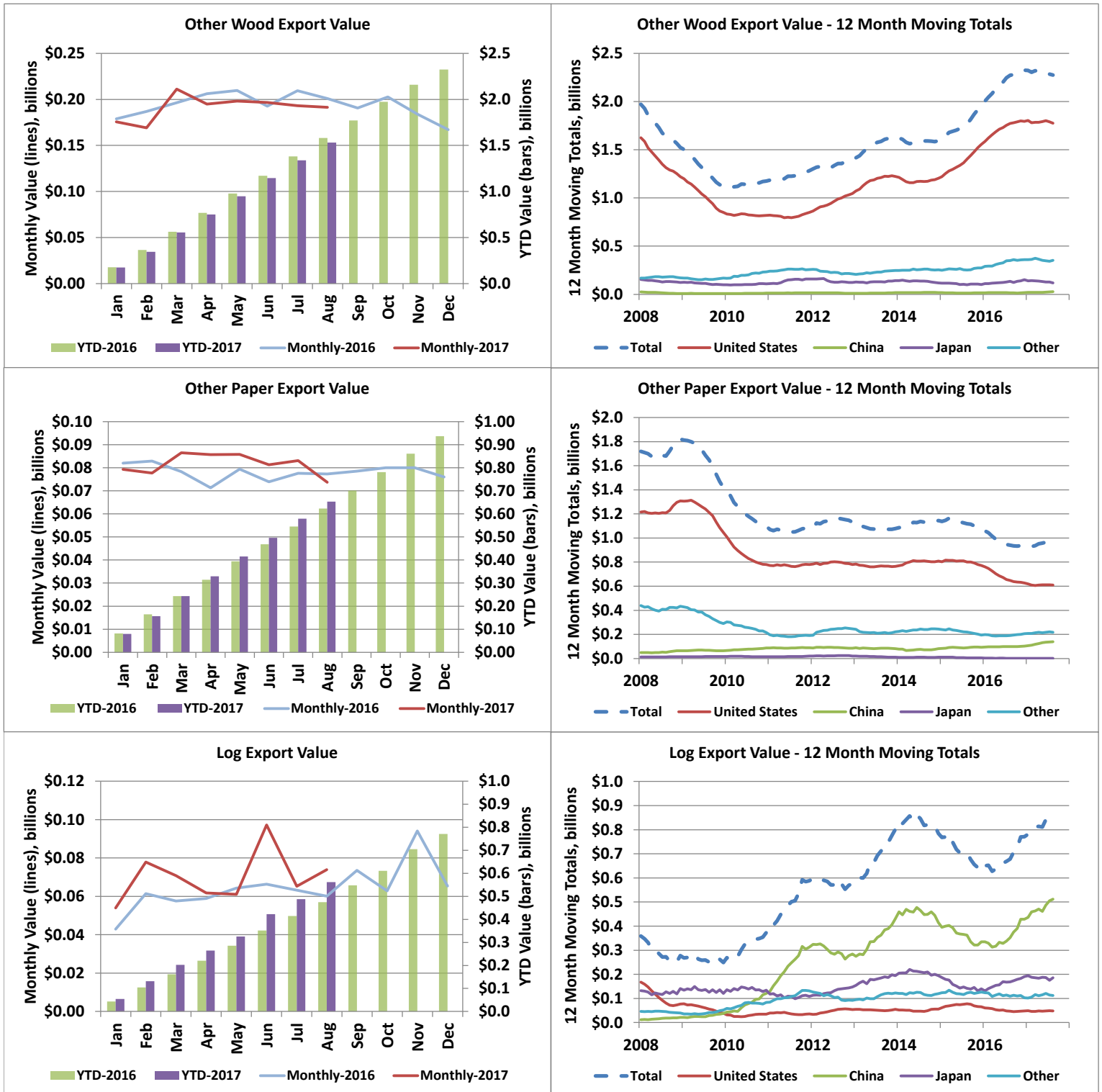
1. Includes wood products such as Veneer, OSB, Plywood, Siding, Poles, Chips, Ties, Mouldings, Panels, Furniture, Seats, Pellets, Shake and Shingles, etc.

2. Includes paper products such as Paper, Cards, Cartons, Rolls, Trays, Containers and Sacks & Bags, etc.

## Export Values by Product and Destination



## Export Values by Product and Destination



## B.C. Forest Product Exports - August 2017

Value (C\$ Millions) - August																
2017								Change in Total YoY	2016							
	Lumber	Pulp	Other Wood	Other Paper	Logs	Country Total	Country Share			Lumber	Pulp	Other Wood	Other Paper	Logs	Country Total	Country Share
U.S.A.	298	37	146	50	3	535	47%	-20%	U.S.A.	423	30	160	53	4	670	55%
China	85	166	5	10	48	314	28%	13%	China	79	147	2	8	40	277	23%
Japan	69	22	6	0	20	117	10%	11%	Japan	63	17	15	0	10	105	9%
Other	50	72	34	13	4	173	15%	10%	Other	53	57	24	16	6	157	13%
<b>Product Total</b>	<b>501</b>	<b>298</b>	<b>191</b>	<b>74</b>	<b>74</b>	<b>1,138</b>	<b>100%</b>	<b>-6%</b>	<b>Product Total</b>	<b>618</b>	<b>252</b>	<b>201</b>	<b>77</b>	<b>60</b>	<b>1,208</b>	<b>100%</b>
<b>Product Share</b>	44%	26%	17%	6%	6%	100%			<b>Product Share</b>	51%	21%	17%	6%	5%	100%	
<b>Change in Total YoY</b>	<b>-19%</b>	<b>18%</b>	<b>-5%</b>	<b>-5%</b>	<b>23%</b>	<b>-6%</b>										

\*China includes exports to Hong Kong.

Value (C\$ Millions) - Year to Date																
2017								Change in Total YoY	2016							
	Lumber	Pulp	Other Wood	Other Paper	Logs	Country Total	Country Share			Lumber	Pulp	Other Wood	Other Paper	Logs	Country Total	Country Share
U.S.A.	2,673	238	1,200	402	34	4,548	49%	-8%	U.S.A.	3,043	252	1,219	420	35	4,968	54%
China	758	1,338	33	107	348	2,585	28%	16%	China	664	1,189	27	73	269	2,222	24%
Japan	502	175	65	1	119	862	9%	8%	Japan	465	108	99	1	125	798	9%
Other	445	493	232	143	60	1,373	15%	11%	Other	392	439	236	128	47	1,242	13%
<b>Product Total</b>	<b>4,378</b>	<b>2,244</b>	<b>1,531</b>	<b>653</b>	<b>562</b>	<b>9,367</b>	<b>100%</b>	<b>1%</b>	<b>Product Total</b>	<b>4,564</b>	<b>1,987</b>	<b>1,581</b>	<b>623</b>	<b>475</b>	<b>9,229</b>	<b>100%</b>
<b>Product Share</b>	47%	24%	16%	7%	6%	100%			<b>Product Share</b>	49%	22%	17%	7%	5%	100%	
<b>Change in Total YoY</b>	<b>-4%</b>	<b>13%</b>	<b>-3%</b>	<b>5%</b>	<b>18%</b>	<b>1%</b>										

Quantity (Thousands) - August										
2017			Change YoY				2016			
	Lumber (m <sup>3</sup> )	Pulp (tonnes)	Logs (m <sup>3</sup> )	Lumber	Pulp	Logs		Lumber (m <sup>3</sup> )	Pulp (tonnes)	Logs (m <sup>3</sup> )
U.S.A.	1,238	45	23	-31%	39%	-33%	U.S.A.	1,783	32	35
China	444	219	339	2%	6%	2%	China	434	207	333
Japan	180	28	168	-4%	23%	145%	Japan	188	23	68
Other	122	89	37	-8%	15%	-32%	Other	132	77	54
<b>Total</b>	<b>1,983</b>	<b>381</b>	<b>566</b>	<b>-22%</b>	<b>12%</b>	<b>15%</b>	<b>Total</b>	<b>2,538</b>	<b>339</b>	<b>491</b>
<b>Change in Total YoY</b>	<b>-22%</b>	<b>12%</b>	<b>15%</b>							

Quantity (Thousands) - Year to Date										
2017			Change YoY				2016			
	Lumber (m <sup>3</sup> )	Pulp (tonnes)	Logs (m <sup>3</sup> )	Lumber	Pulp	Logs		Lumber (m <sup>3</sup> )	Pulp (tonnes)	Logs (m <sup>3</sup> )
U.S.A.	10,626	283	286	-20%	-2%	-6%	U.S.A.	13,212	288	306
China	3,759	1,765	2,592	-7%	5%	18%	China	4,023	1,678	2,191
Japan	1,385	215	881	0%	52%	-6%	Japan	1,390	141	937
Other	1,140	629	485	7%	6%	11%	Other	1,069	596	438
<b>Total</b>	<b>16,910</b>	<b>2,892</b>	<b>4,244</b>	<b>-14%</b>	<b>7%</b>	<b>10%</b>	<b>Total</b>	<b>19,693</b>	<b>2,703</b>	<b>3,873</b>
<b>Change in Total YoY</b>	<b>-14%</b>	<b>7%</b>	<b>10%</b>							

## B.C. Forest Product Exports - August 2017

Share of Value - 2017 YTD August						
Country	Lumber	Pulp	Other Wood	Other Paper	Logs	Country Share
U.S.A.	61%	11%	78%	62%	6%	49%
China	17%	60%	2%	16%	62%	28%
Japan	11%	8%	4%	0%	21%	9%
Other	10%	22%	15%	22%	11%	15%
<b>Total</b>	<b>100%</b>	<b>100%</b>	<b>100%</b>	<b>100%</b>	<b>100%</b>	<b>100%</b>
<b>Product Share</b>	<b>47%</b>	<b>24%</b>	<b>16%</b>	<b>7%</b>	<b>6%</b>	<b>100%</b>

Share of Quantity - 2017 YTD August					
Country	Lumber	Pulp	Logs	Panels	Pellets
U.S.A.	63%	10%	7%	83%	1%
China	22%	61%	61%	4%	0%
Japan	8%	7%	21%	8%	6%
South Korea	1%	6%	11%	0%	4%
Indonesia	0%	7%	0%	0%	0%
U.K	0%	0%	0%	1%	83%
Other	5%	8%	0%	5%	5%
<b>Total</b>	<b>100%</b>	<b>100%</b>	<b>100%</b>	<b>100%</b>	<b>100%</b>

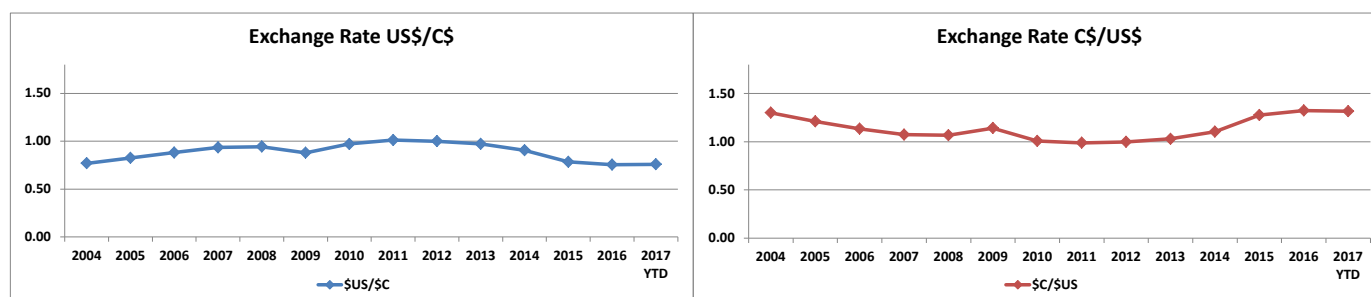
\*Panels include OSB, plywood, particleboard, and fibreboard

B.C. Forest Product Export Value (C\$ Million) by Market, 2004 to 2017 YTD August														
Country	2004	2005	2006	2007	2008	2009	2010	2011	2012	2013	2014	2015	2016	2017 YTD
U.S.A.	9,662	9,572	8,816	7,373	5,613	4,017	4,125	3,825	4,344	4,973	5,532	6,132	7,393	4,548
China	807	731	890	1,212	1,196	1,253	2,205	3,252	3,107	3,662	3,804	3,741	3,412	2,546
Japan	2,130	1,677	1,680	1,350	1,241	933	1,136	1,178	1,135	1,343	1,257	1,188	1,230	862
Other	2,482	2,154	2,175	2,347	2,057	1,400	1,677	1,729	1,574	1,676	1,804	1,815	1,919	1,412
<b>Total</b>	<b>15,081</b>	<b>14,134</b>	<b>13,560</b>	<b>12,282</b>	<b>10,107</b>	<b>7,602</b>	<b>9,143</b>	<b>9,985</b>	<b>10,159</b>	<b>11,654</b>	<b>12,397</b>	<b>12,876</b>	<b>13,955</b>	<b>9,367</b>

B.C. Forest Product Export Value (C\$ Million) by Product, 2004 to 2017 YTD August														
Products Category	2004	2005	2006	2007	2008	2009	2010	2011	2012	2013	2014	2015	2016	2017 YTD
Lumber (softwood)	6,895	6,272	5,849	4,773	3,606	2,749	3,558	3,833	4,204	5,311	5,754	5,897	6,924	4,378
Pulp	3,033	2,643	2,887	3,379	2,878	2,056	2,939	3,200	2,852	2,831	3,121	3,301	2,998	2,244
Other Wood Products	2,742	2,679	2,440	2,022	1,524	1,129	1,175	1,284	1,394	1,633	1,594	1,948	2,325	1,531
Other Paper Products	1,986	2,006	1,897	1,739	1,821	1,419	1,098	1,079	1,132	1,077	1,144	1,066	937	653
Logs	425	534	487	369	278	249	373	588	577	802	784	666	771	562
<b>Total</b>	<b>14,353</b>	<b>12,997</b>	<b>15,081</b>	<b>14,134</b>	<b>13,560</b>	<b>12,282</b>	<b>10,107</b>	<b>8,239</b>	<b>9,143</b>	<b>9,985</b>	<b>10,159</b>	<b>11,654</b>	<b>12,396</b>	<b>9,367</b>

B.C. Forest Product Export Quantity (millions) by Product, 2004 to 2017 YTD August														
Products Category	2004	2005	2006	2007	2008	2009	2010	2011	2012	2013	2014	2015	2016	2017 YTD
Lumber (softwood) - m <sup>3</sup>	32.11	33.30	32.83	28.25	21.21	17.82	20.85	22.84	24.16	25.88	25.85	26.21	29.24	16.91
Pulp - tonnes	4.69	4.45	4.73	4.87	3.95	3.29	3.79	4.10	4.45	4.15	4.14	4.27	4.07	2.89
Logs - m <sup>3</sup>	3.46	4.77	4.31	3.34	2.62	2.46	3.74	5.45	5.71	6.67	6.27	5.57	6.28	4.24
Panels - m <sup>3</sup>	2.59	2.53	2.90	2.68	1.86	1.25	1.10	1.63	1.57	1.67	1.52	1.78	2.14	1.41
Pellets - tonnes	0.39	0.41	0.51	0.63	0.68	0.76	1.06	1.22	1.17	1.28	1.29	1.26	1.93	1.18

\*Panels include OSB, plywood, particleboard, and fibreboard. Veneer is excluded.



Source: OANDA Additional exchange rates will be included in the near future

Additional annual data and charts can be found in the annual Economic State of B.C.'s Forest Sector

## Export Quantities by Product and Destination

