



**B.C. Forest Product  
Exports April 2018**

Published June 6

*Note: The February 2018 revision to Canadian export data had a major downward revision to B.C.'s 2016 lumber exports to the USA. Roughly 1.6 million m<sup>3</sup> of lumber was removed; as described in the Ministry's [2016 Economic State of the Forest Sector](#) this volume was actually from Alberta.*

***Revision to 2016 Lumber Exports***

	<b>Total Lumber Exports</b>		<b>To USA Only</b>	
	<b>m<sup>3</sup>, thousands</b>	<b>Value (million)</b>	<b>m<sup>3</sup>, thousands</b>	<b>Value (million)</b>
<b>Old Data</b>	29,231	\$6,922	19,476	\$4,552
<b>Revised Data</b>	27,665	\$6,669	17,912	\$4,299
<b>Change</b>	<b>-1,566</b>	<b>-\$253</b>	<b>-1,564</b>	<b>-\$253</b>

**Highlights for Year-to-Date (YTD)**

B.C. export values are down **-1.0%** for 2018 YTD April compared to the same period in 2017 (**\$4.72** billion vs. **\$4.76**). Lumber value is down **-17%** (volumes are down **-17%**). Pulp export value is up (**31%**). The value of Other Wood Products<sup>1</sup> is up slightly (**3%**), and so is the value of Other Paper Products<sup>2</sup> (**2%**).

In terms of value by destination country China (**6%**) and Japan (**18%**) are up, and the value to Other countries is also up (**15%**). The value to the United States is down (**-12%**).

### Value and Quantity by Product (YTD)

	Value		Quantity	
	Value (\$m)	Change from 2017	Quantity (thousands)	Change from 2017
Lumber	\$ 1,949	-17%	7,261 m3	-17%
Pulp	\$ 1,399	31%	1,371 t	-3%
Other Wood	\$ 772	3%	-	-
Other Paper	\$ 335	2%	-	-
Logs	\$ 261	-1%	1814 m3	-11%
<b>Total</b>	<b>\$ 4,716</b>	<b>-1.0%</b>	-	-

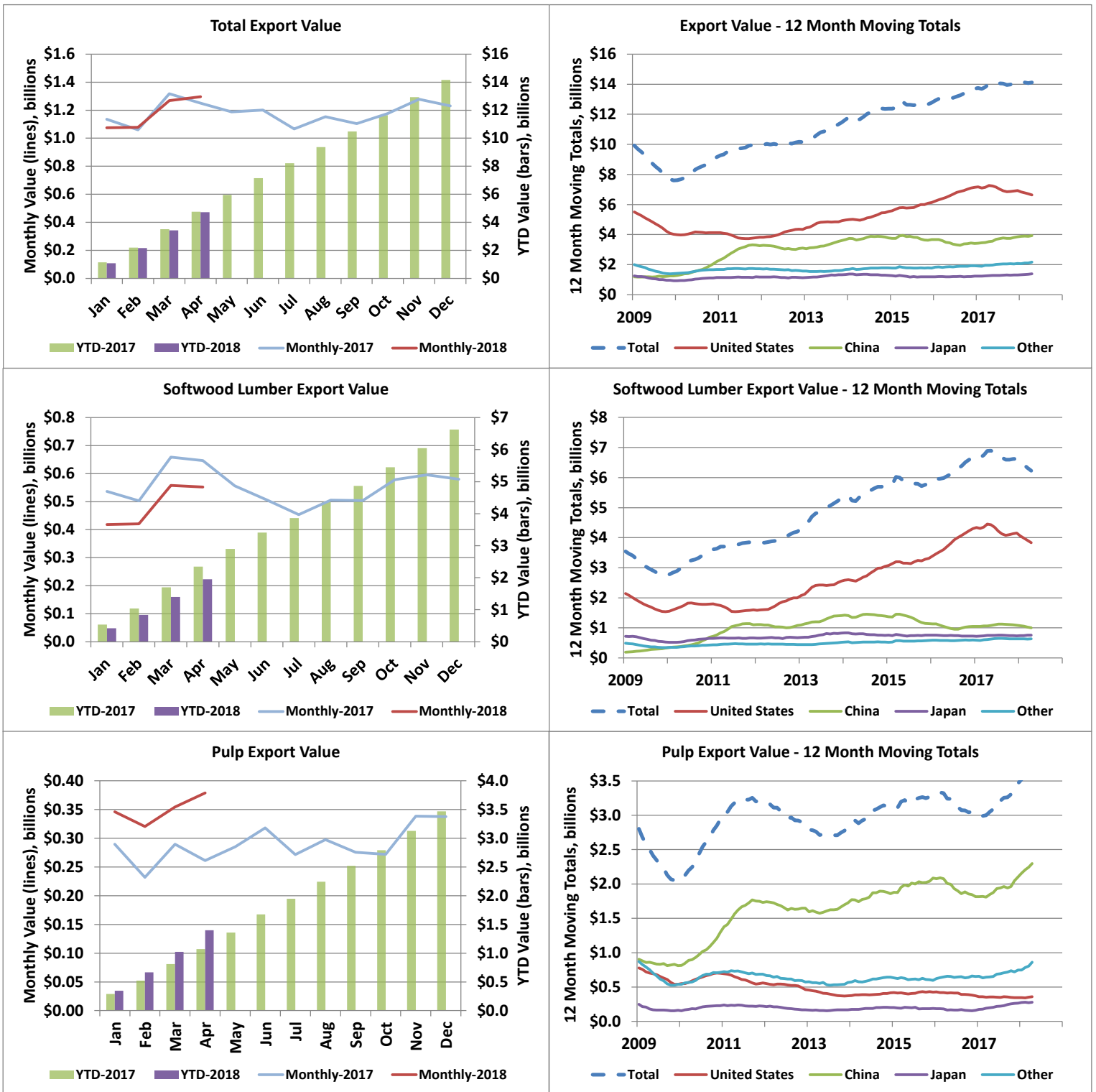
### Value by Country (YTD)

	Value (\$m)	Change from 2017	Share of Value in	
			2018*	Share in 2017
USA	\$ 2,130	-12%	45%	51%
China	\$ 1,321	6%	28%	26%
Japan	\$ 505	18%	11%	9%
Other Countries	\$ 759	15%	16%	14%
<b>Total</b>	<b>\$ 4,716</b>	<b>-1.0%</b>	<b>100%</b>	<b>100%</b>

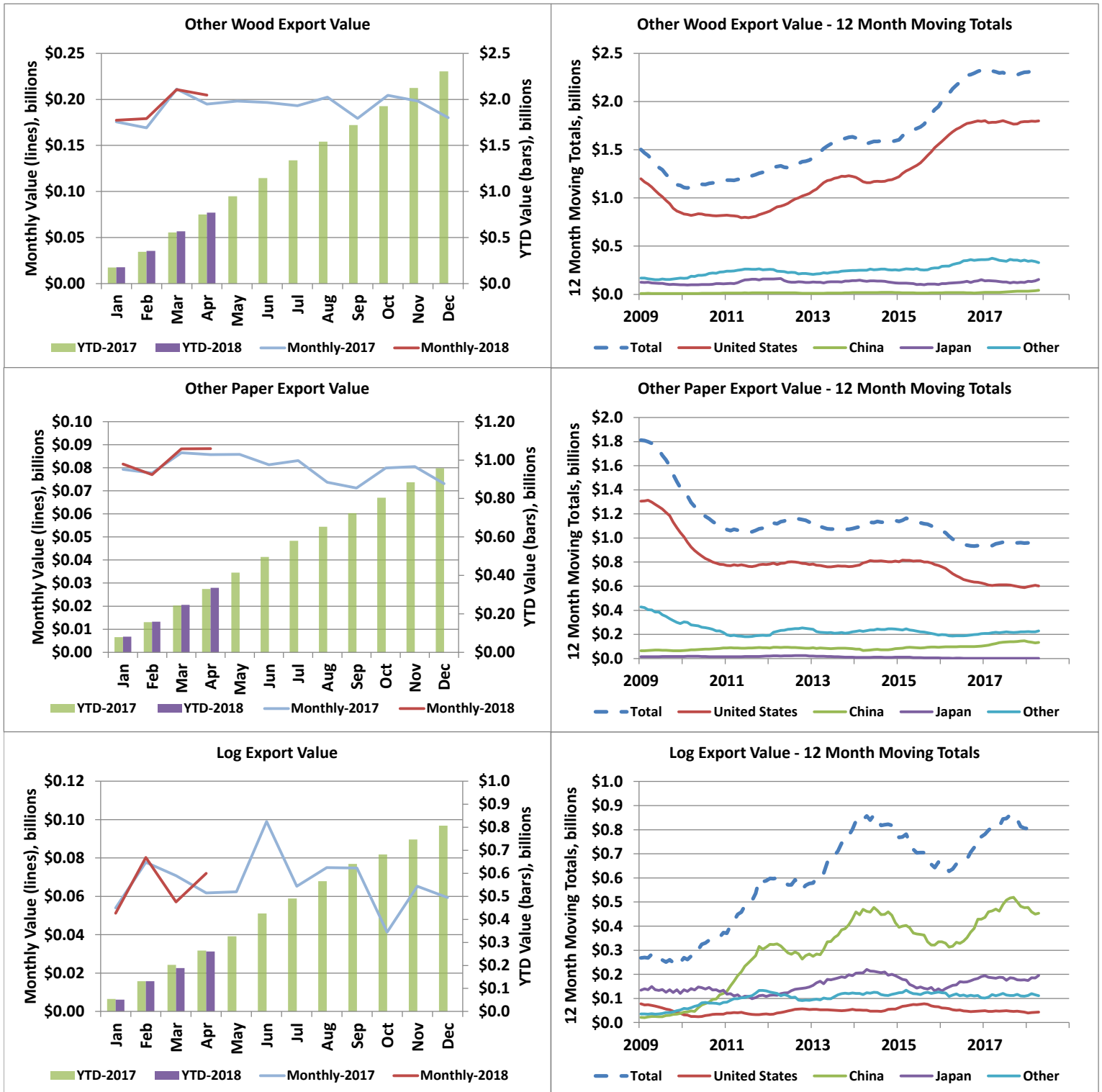
\*Colour denotes if share is up or down compared to previous year.

1. Includes wood products such as Veneer, OSB, Plywood, Siding, Poles, Chips, Ties, Mouldings, Panels, Furniture, Seats, Pellets, Shake and Shingles, etc.
2. Includes paper products such as Paper, Cards, Cartons, Rolls, Trays, Containers and Sacks & Bags, etc.

## Export Values by Product and Destination



## Export Values by Product and Destination



## B.C. Forest Product Exports - April 2018

Value (C\$ Millions) - April																
2018								Change in Total YoY	2017							
	Lumber	Pulp	Other Wood	Other Paper	Logs	Country Total	Country Share			Lumber	Pulp	Other Wood	Other Paper	Logs	Country Total	Country Share
U.S.A.	347	31	161	48	5	593	46%	-12%	U.S.A.	428	28	156	55	4	671	54%
China	78	212	6	14	39	349	27%	13%	China	94	162	3	14	36	309	25%
Japan	65	24	21	0	26	136	11%	27%	Japan	64	19	8	0	16	107	9%
Other	63	111	17	26	2	218	17%	35%	Other	59	52	28	17	6	162	13%
<b>Product Total</b>	<b>552</b>	<b>379</b>	<b>205</b>	<b>88</b>	<b>72</b>	<b>1,296</b>	<b>100%</b>	<b>4%</b>	<b>Product Total</b>	<b>646</b>	<b>261</b>	<b>195</b>	<b>86</b>	<b>62</b>	<b>1,250</b>	<b>100%</b>
<b>Product Share</b>	43%	29%	16%	7%	6%	100%			<b>Product Share</b>	52%	21%	16%	7%	5%	100%	
<b>Change in Total YoY</b>	<b>-15%</b>	<b>45%</b>	<b>5%</b>	<b>3%</b>	<b>17%</b>	<b>4%</b>										

\*China includes exports to Hong Kong.

Value (C\$ Millions) - Year to Date																
2018								Change in Total YoY	2017							
	Lumber	Pulp	Other Wood	Other Paper	Logs	Country Total	Country Share			Lumber	Pulp	Other Wood	Other Paper	Logs	Country Total	Country Share
U.S.A.	1,190	119	594	210	17	2,130	45%	-12%	U.S.A.	1,516	108	586	198	17	2,426	51%
China	287	842	20	40	133	1,321	28%	6%	China	368	654	13	57	157	1,249	26%
Japan	264	98	65	1	78	505	11%	18%	Japan	245	86	35	1	59	426	9%
Other	209	340	92	84	33	759	16%	15%	Other	216	224	116	74	30	660	14%
<b>Product Total</b>	<b>1,949</b>	<b>1,399</b>	<b>772</b>	<b>335</b>	<b>261</b>	<b>4,716</b>	<b>100%</b>	<b>-1.0%</b>	<b>Product Total</b>	<b>2,345</b>	<b>1,072</b>	<b>751</b>	<b>329</b>	<b>264</b>	<b>4,761</b>	<b>100%</b>
<b>Product Share</b>	41%	30%	16%	7%	6%	100%			<b>Product Share</b>	49%	23%	16%	7%	6%	100%	
<b>Change in Total YoY</b>	<b>-17%</b>	<b>31%</b>	<b>3%</b>	<b>2%</b>	<b>-1%</b>	<b>-1.0%</b>										

Quantity (Thousands) - April										
2018			Change YoY				2017			
	Lumber (m <sup>3</sup> )	Pulp (tonnes)	Logs (m <sup>3</sup> )	Lumber	Pulp	Logs		Lumber (m <sup>3</sup> )	Pulp (tonnes)	Logs (m <sup>3</sup> )
U.S.A.	1,314	32	33	-14%	-1%	-2%	U.S.A.	1,527	33	34
China	376	196	298	-20%	-6%	11%	China	470	208	268
Japan	156	22	158	-13%	2%	50%	Japan	178	22	105
Other	149	110	32	1%	66%	-37%	Other	148	66	51
<b>Total</b>	<b>1,994</b>	<b>361</b>	<b>521</b>	<b>-14%</b>	<b>10%</b>	<b>14%</b>	<b>Total</b>	<b>2,323</b>	<b>329</b>	<b>458</b>
<b>Change in Total YoY</b>	<b>-14%</b>	<b>10%</b>	<b>14%</b>							

Quantity (Thousands) - Year to Date										
2018			Change YoY				2017			
	Lumber (m <sup>3</sup> )	Pulp (tonnes)	Logs (m <sup>3</sup> )	Lumber	Pulp	Logs		Lumber (m <sup>3</sup> )	Pulp (tonnes)	Logs (m <sup>3</sup> )
U.S.A.	4,689	129	123	-16%	1%	-11%	U.S.A.	5,600	128	139
China	1,401	814	979	-24%	-7%	-20%	China	1,854	878	1,223
Japan	671	94	482	-3%	-14%	14%	Japan	689	109	423
Other	501	334	229	-10%	11%	-9%	Other	554	301	252
<b>Total</b>	<b>7,261</b>	<b>1,371</b>	<b>1,814</b>	<b>-17%</b>	<b>-3%</b>	<b>-11%</b>	<b>Total</b>	<b>8,697</b>	<b>1,416</b>	<b>2,036</b>
<b>Change in Total YoY</b>	<b>-17%</b>	<b>-3%</b>	<b>-11%</b>							

## B.C. Forest Product Exports - April 2018

Share of Value - 2018 YTD April						
Country	Lumber	Pulp	Other Wood	Other Paper	Logs	Country Share
U.S.A.	61%	9%	77%	63%	6%	45%
China	15%	60%	3%	12%	51%	28%
Japan	14%	7%	8%	0%	30%	11%
Other	11%	24%	12%	25%	13%	16%
<b>Total</b>	<b>100%</b>	<b>100%</b>	<b>100%</b>	<b>100%</b>	<b>100%</b>	<b>100%</b>
Product Share	41%	30%	16%	7%	6%	100%

Share of Quantity - 2018 YTD April					
Country	Lumber	Pulp	Logs	Panels	Pellets
U.S.A.	65%	9%	7%	79%	1%
China	19%	59%	54%	5%	0%
Japan	9%	7%	27%	8%	36%
South Korea	1%	5%	11%	0%	2%
Indonesia	0%	9%	0%	0%	0%
U.K	0%	0%	0%	1%	61%
Other	6%	10%	2%	6%	0%
<b>Total</b>	<b>100%</b>	<b>100%</b>	<b>100%</b>	<b>100%</b>	<b>100%</b>

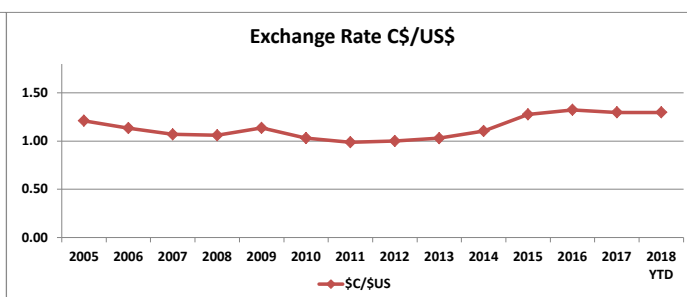
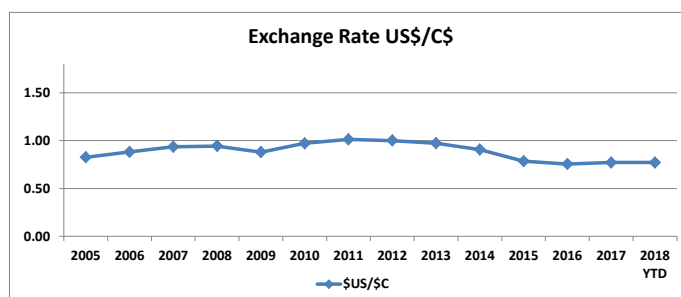
\*Panels include OSB, plywood, particleboard, and fibreboard

B.C. Forest Product Export Value (C\$ Million) by Market, 2005 to 2018 YTD April														
Country	2005	2006	2007	2008	2009	2010	2011	2012	2013	2014	2015	2016	2017	2018 YTD
U.S.A.	9,572	8,816	7,373	5,613	4,017	4,125	3,825	4,344	4,973	5,533	6,132	7,140	6,929	2,130
China	731	890	1,212	1,196	1,253	2,205	3,252	3,107	3,662	3,769	3,673	3,410	3,847	1,308
Japan	1,677	1,680	1,350	1,241	933	1,136	1,178	1,135	1,343	1,278	1,193	1,230	1,307	505
Other	2,482	2,154	2,175	2,347	2,057	1,400	1,677	1,729	1,574	1,676	1,804	1,815	1,919	772
<b>Total</b>	<b>14,462</b>	<b>13,540</b>	<b>12,110</b>	<b>10,397</b>	<b>8,260</b>	<b>8,866</b>	<b>9,932</b>	<b>10,315</b>	<b>11,553</b>	<b>12,255</b>	<b>12,803</b>	<b>13,596</b>	<b>14,003</b>	<b>4,716</b>

B.C. Forest Product Export Value (C\$ Million) by Product, 2005 to 2018 YTD April														
Products Category	2005	2006	2007	2008	2009	2010	2011	2012	2013	2014	2015	2016	2017	2018 YTD
Lumber (softwood)	6,272	5,849	4,773	3,606	2,749	3,558	3,833	4,204	5,311	5,723	5,792	6,669	6,625	1,949
Pulp	2,643	2,887	3,379	2,878	2,056	2,939	3,200	2,852	2,831	3,121	3,301	2,998	3,466	1,399
Other Wood Products	2,679	2,440	2,022	1,524	1,129	1,175	1,284	1,394	1,633	1,594	1,948	2,325	2,303	772
Other Paper Products	2,006	1,897	1,739	1,821	1,419	1,098	1,079	1,132	1,077	1,144	1,066	937	958	335
Logs	534	487	369	278	249	373	588	577	802	784	665	771	805	261
<b>Total</b>	<b>14,353</b>	<b>12,997</b>	<b>15,081</b>	<b>14,134</b>	<b>13,560</b>	<b>12,282</b>	<b>10,107</b>	<b>8,239</b>	<b>9,143</b>	<b>9,985</b>	<b>10,159</b>	<b>11,654</b>	<b>12,396</b>	<b>4,716</b>

B.C. Forest Product Export Quantity (millions) by Product, 2005 to 2018 YTD April														
Products Category	2005	2006	2007	2008	2009	2010	2011	2012	2013	2014	2015	2016	2017	2018 YTD
Lumber (softwood) - m <sup>3</sup>	33.30	32.83	28.25	21.21	17.82	20.85	22.84	24.16	25.88	25.84	26.20	27.66	25.29	7.26
Pulp - tonnes	4.45	4.73	4.87	3.95	3.29	3.79	4.10	4.45	4.15	4.14	4.27	4.07	4.33	1.37
Logs - m <sup>3</sup>	4.77	4.31	3.34	2.62	2.46	3.74	5.45	5.71	6.67	6.27	5.57	6.28	5.98	1.81
Panels - m <sup>3</sup>	2.53	2.90	2.68	1.86	1.25	1.10	1.63	1.57	1.67	1.52	1.78	2.14	2.23	0.73
Pellets - tonnes	0.41	0.51	0.63	0.68	0.76	1.06	1.22	1.17	1.28	1.29	1.26	1.93	1.78	0.63

\*Panels include OSB, plywood, particleboard, and fibreboard. Veneer is excluded.



Source: OANDA

Additional exchange rates will be included in the near future

[Additional annual data and charts can be found in the annual Economic State of B.C.'s Forest Sector](#)

## Export Quantities by Product and Destination

