

B.C. Forest Product Exports – April 2017

Highlights for Year-to-Date (YTD)

B.C. export values are up **5%** for 2017 YTD April compared to the same period in 2016 (**\$4.77** billion vs. **\$4.53**). Lumber value is up **7%** (volumes are down **-10%**). Pulp export value is up (**5%**). The value of Other Wood Products¹ has declined (**-2%**). The value of Other Paper Products² is up (**5%**).

In terms of value by destination country China (**11%**) and Japan (**11%**) are up. Value to Other countries (**6%**) is also up. The value to the United States (**-2%**) is down.

Value and Quantity by Product (YTD)

	Value		Quantity	
	Value (\$m)	Change from 2016	Quantity (thousands)	Change from 2016
Lumber	\$ 2,353	7%	8,696 m3	-10%
Pulp	\$ 1,072	5%	1416 t	3%
Other Wood	\$ 751	-2%	-	-
Other Paper	\$ 329	5%	-	-
Logs	\$ 264	20%	2,038 m3	14%
Total	\$ 4,770	5%	-	-

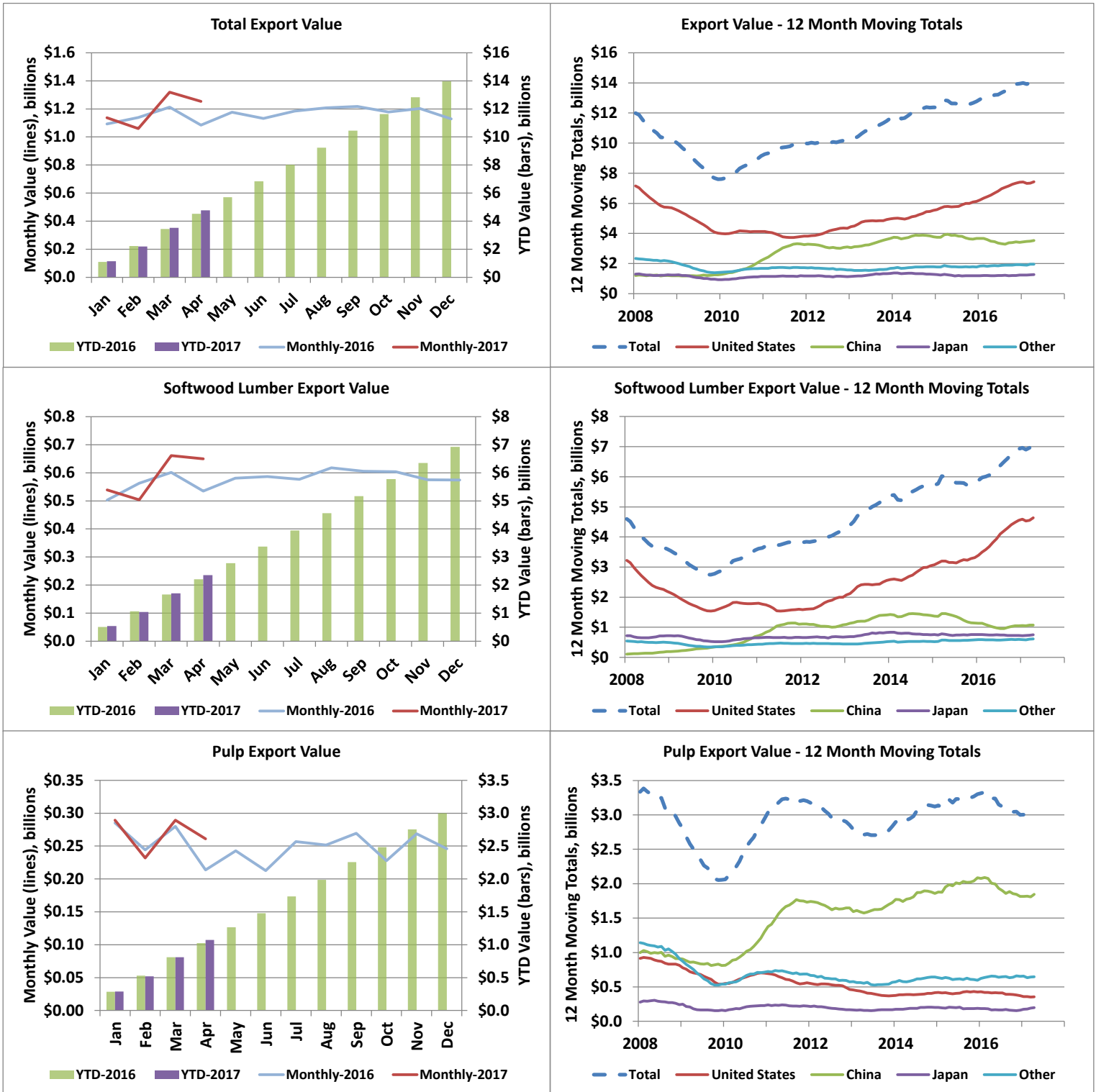
Value by Country (YTD)

	Value (\$m)	Change from 2016	Share of Value in	
			2017	Share in 2016
USA	\$ 2,429	2%	51%	53%
China	\$ 1,255	11%	26%	25%
Japan	\$ 426	11%	9%	9%
Other Countries	\$ 660	6%	14%	14%
Total	\$ 4,770	5%	100%	100%

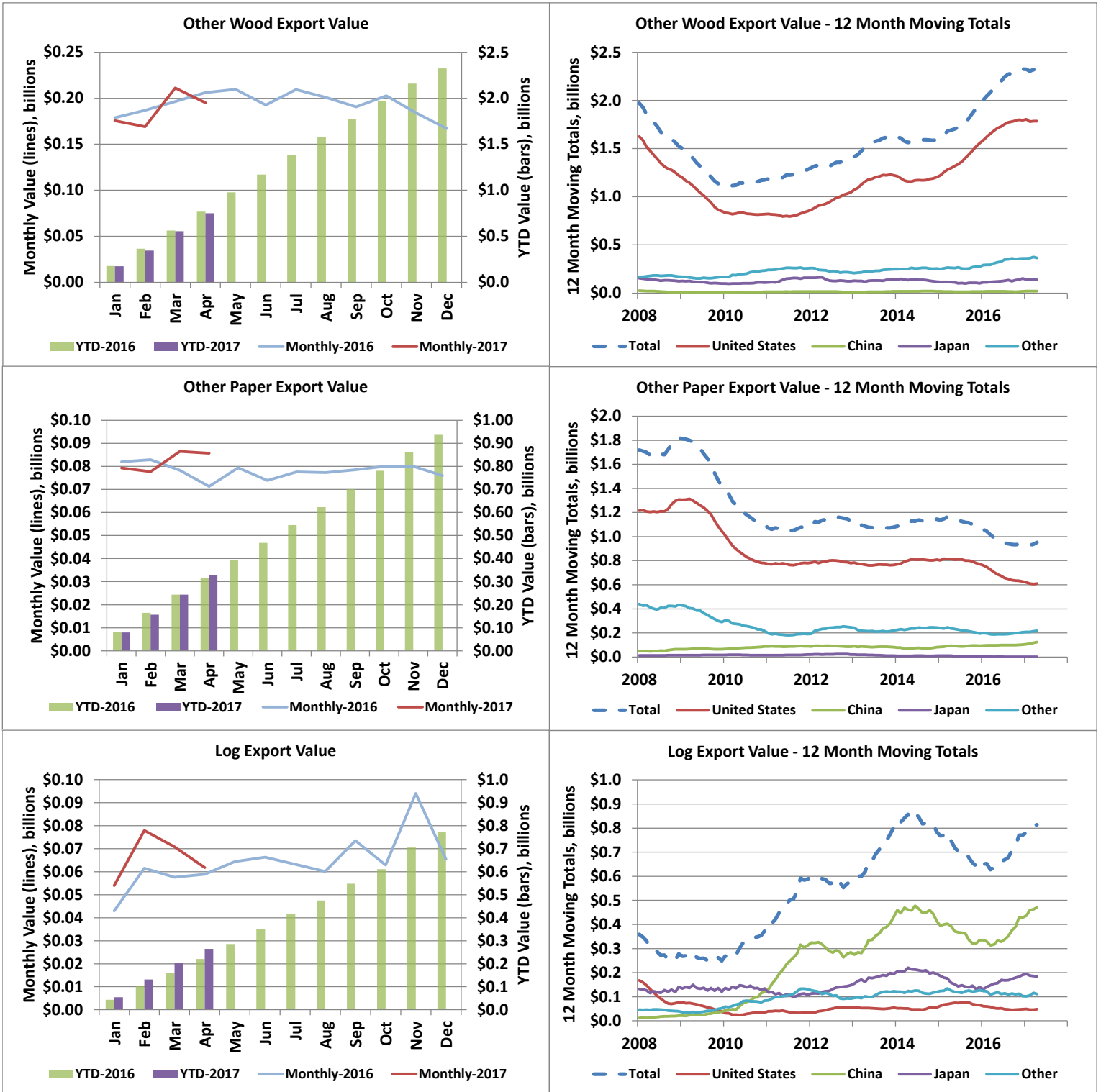
1. Includes wood products such as Veneer, OSB, Plywood, Siding, Poles, Chips, Ties, Mouldings, Panels, Furniture, Seats, Pellets, Shake and Shingles, etc.

2. Includes paper products such as Paper, Cards, Cartons, Rolls, Trays, Containers and Sacks & Bags, etc.

Export Values by Product and Destination



Export Values by Product and Destination



Value (C\$ Millions) - Current Month																
2017								Change in Total YoY	2016							
	Lumber	Pulp	Other Wood	Other Paper	Logs	Country Total	Country Share			Lumber	Pulp	Other Wood	Other Paper	Logs	Country Total	Country Share
U.S.A.	431	28	156	55	4	674	54%	16%	U.S.A.	349	26	156	50	2	583	54%
China	95	162	3	14	36	310	25%	21%	China	91	126	3	9	29	257	24%
Japan	64	19	8	0	16	107	9%	20%	Japan	48	13	10	0	18	89	8%
Other	59	52	28	17	6	162	13%	4%	Other	47	49	37	13	10	156	14%
Product Total	650	261	195	86	62	1,253	100%	16%	Product Total	535	214	206	71	59	1,085	100%
Product Share	52%	21%	16%	7%	5%	100%			Product Share	49%	20%	19%	7%	5%	100%	
Change in Total YoY	21%	22%	-5%	20%	5%	16%										

*China includes exports to Hong Kong.

Value (C\$ Millions) - Year to Date																
2017								Change in Total YoY	2016							
	Lumber	Pulp	Other Wood	Other Paper	Logs	Country Total	Country Share			Lumber	Pulp	Other Wood	Other Paper	Logs	Country Total	Country Share
U.S.A.	1,519	108	586	198	17	2,429	51%	2%	U.S.A.	1,435	123	596	215	17	2,387	53%
China	374	654	13	57	157	1,255	26%	11%	China	348	619	12	35	116	1,130	25%
Japan	245	86	35	1	59	426	9%	11%	Japan	221	49	49	1	66	386	9%
Other	216	224	116	74	30	660	14%	6%	Other	197	231	111	64	21	625	14%
Product Total	2,353	1,072	751	329	264	4,770	100%	5%	Product Total	2,202	1,023	768	315	221	4,528	100%
Product Share	49%	22%	16%	7%	6%	100%			Product Share	49%	23%	17%	7%	5%	100%	
Change in Total YoY	7%	5%	-2%	5%	20%	5%										

Quantity (Thousands) - Current Month										
2017			Change YoY				2016			
	Lumber (m ³)	Pulp (tonnes)	Logs (m ³)	Lumber	Pulp	Logs		Lumber (m ³)	Pulp (tonnes)	Logs (m ³)
U.S.A.	1,526	33	34	-5%	9%	87%	U.S.A.	1,606	30	18
China	470	208	268	-16%	13%	20%	China	562	184	224
Japan	178	22	105	22%	27%	-26%	Japan	147	17	142
Other	148	66	51	9%	-9%	-42%	Other	136	73	88
Total	2,322	329	459	-5%	8%	-3%	Total	2,451	304	472
Change in Total YoY	-5%	8%	-3%							

Quantity (Thousands) - Year to Date										
2017			Change YoY				2016			
	Lumber (m ³)	Pulp (tonnes)	Logs (m ³)	Lumber	Pulp	Logs		Lumber (m ³)	Pulp (tonnes)	Logs (m ³)
U.S.A.	5,600	128	140	-11%	-10%	1%	U.S.A.	6,285	142	138
China	1,854	878	1,221	-15%	1%	27%	China	2,168	866	960
Japan	689	109	423	6%	73%	-16%	Japan	652	63	502
Other	554	301	254	-1%	-3%	33%	Other	559	309	191
Total	8,696	1,416	2,038	-10%	3%	14%	Total	9,664	1,381	1,792
Change in Total YoY	-10%	3%	14%							

Share of Value - 2017 YTD						
Country	Lumber	Pulp	Other Wood	Other Paper	Logs	Country Share
U.S.A.	65%	10%	78%	60%	7%	51%
China	16%	61%	2%	17%	59%	26%
Japan	10%	8%	5%	0%	22%	9%
Other	9%	21%	15%	22%	11%	14%
Total	100%	100%	100%	100%	100%	100%
Product Share	49%	22%	16%	7%	6%	100%

Share of Quantity - 2017 YTD					
Country	Lumber	Pulp	Logs	Panels	Pellets
U.S.A.	64%	9%	7%	85%	1%
China	21%	62%	60%	2%	0%
Japan	8%	8%	21%	7%	7%
South Korea	1%	7%	12%	1%	7%
Indonesia	0%	6%	0%	0%	0%
U.K	0%	0%	0%	1%	76%
Other	5%	8%	0%	4%	9%
Total	100%	100%	100%	100%	100%

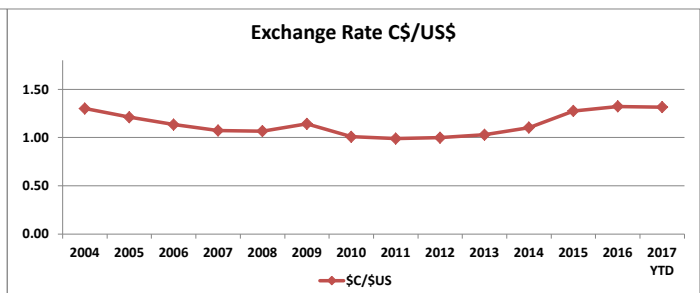
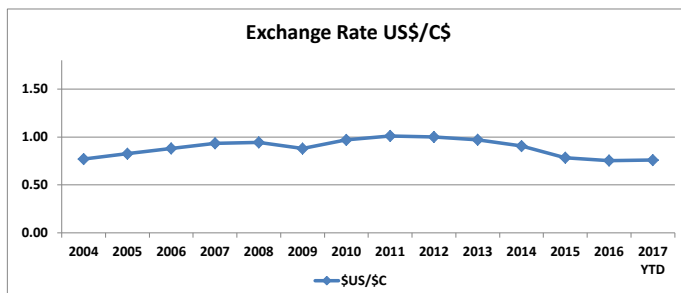
*Panels include OSB, plywood, particleboard, and fibreboard

B.C. Forest Product Export Value (C\$ Million) by Market, 2004 to 2017 YTD														
Country	2004	2005	2006	2007	2008	2009	2010	2011	2012	2013	2014	2015	2016	2017 YTD
U.S.A.	9,662	9,572	8,816	7,373	5,613	4,017	4,125	3,825	4,344	4,973	5,532	6,132	7,393	2,429
China	807	731	890	1,212	1,196	1,253	2,205	3,252	3,107	3,662	3,804	3,741	3,412	1,232
Japan	2,130	1,677	1,680	1,350	1,241	933	1,136	1,178	1,135	1,343	1,257	1,188	1,230	426
Other	2,482	2,154	2,175	2,347	2,057	1,400	1,677	1,729	1,574	1,676	1,804	1,815	1,919	683
Total	15,081	14,134	13,560	12,282	10,107	7,602	9,143	9,985	10,159	11,654	12,397	12,876	13,955	4,770

B.C. Forest Product Export Value (C\$ Million) by Product, 2004 to 2017 YTD														
Products Category	2004	2005	2006	2007	2008	2009	2010	2011	2012	2013	2014	2015	2016	2017 YTD
Lumber (softwood)	6,895	6,272	5,849	4,773	3,606	2,749	3,558	3,833	4,204	5,311	5,754	5,897	6,924	2,353
Pulp	3,033	2,643	2,887	3,379	2,878	2,056	2,939	3,200	2,852	2,831	3,121	3,301	2,998	1,072
Other Wood Products	2,742	2,679	2,440	2,022	1,524	1,129	1,175	1,284	1,394	1,633	1,594	1,948	2,325	751
Other Paper Products	1,986	2,006	1,897	1,739	1,821	1,419	1,098	1,079	1,132	1,077	1,144	1,066	937	329
Logs	425	534	487	369	278	249	373	588	577	802	784	666	771	264
Total	14,353	12,997	15,081	14,134	13,560	12,282	10,107	8,239	9,143	9,985	10,159	11,654	12,396	4,770

B.C. Forest Product Export Quantity (millions) by Product, 2004 to 2017 YTD														
Products Category	2004	2005	2006	2007	2008	2009	2010	2011	2012	2013	2014	2015	2016	2017 YTD
Lumber (softwood) - m ³	32.11	33.30	32.83	28.25	21.21	17.82	20.85	22.84	24.16	25.88	25.85	26.21	29.24	8.70
Pulp - tonnes	4.69	4.45	4.73	4.87	3.95	3.29	3.79	4.10	4.45	4.15	4.14	4.27	4.07	1.42
Logs - m ³	3.46	4.77	4.31	3.34	2.62	2.46	3.74	5.45	5.71	6.67	6.27	5.57	6.28	2.04
Panels - m ³	2.59	2.53	2.90	2.68	1.86	1.25	1.10	1.63	1.57	1.67	1.52	1.78	2.14	0.68
Pellets - tonnes	0.39	0.41	0.51	0.63	0.68	0.76	1.06	1.22	1.17	1.28	1.29	1.26	1.93	0.61

*Panels include OSB, plywood, particleboard, and fibreboard. Veneer is excluded.



Source: OANDA Additional exchange rates will be included in the near future

Additional annual data and charts can be found in the annual Economic State of B.C.'s Forest Sector

Export Quantities by Product and Destination

