

Distribution of major root diseases

Figure 1. Distribution of *Armillaria* root disease in British Columbia.

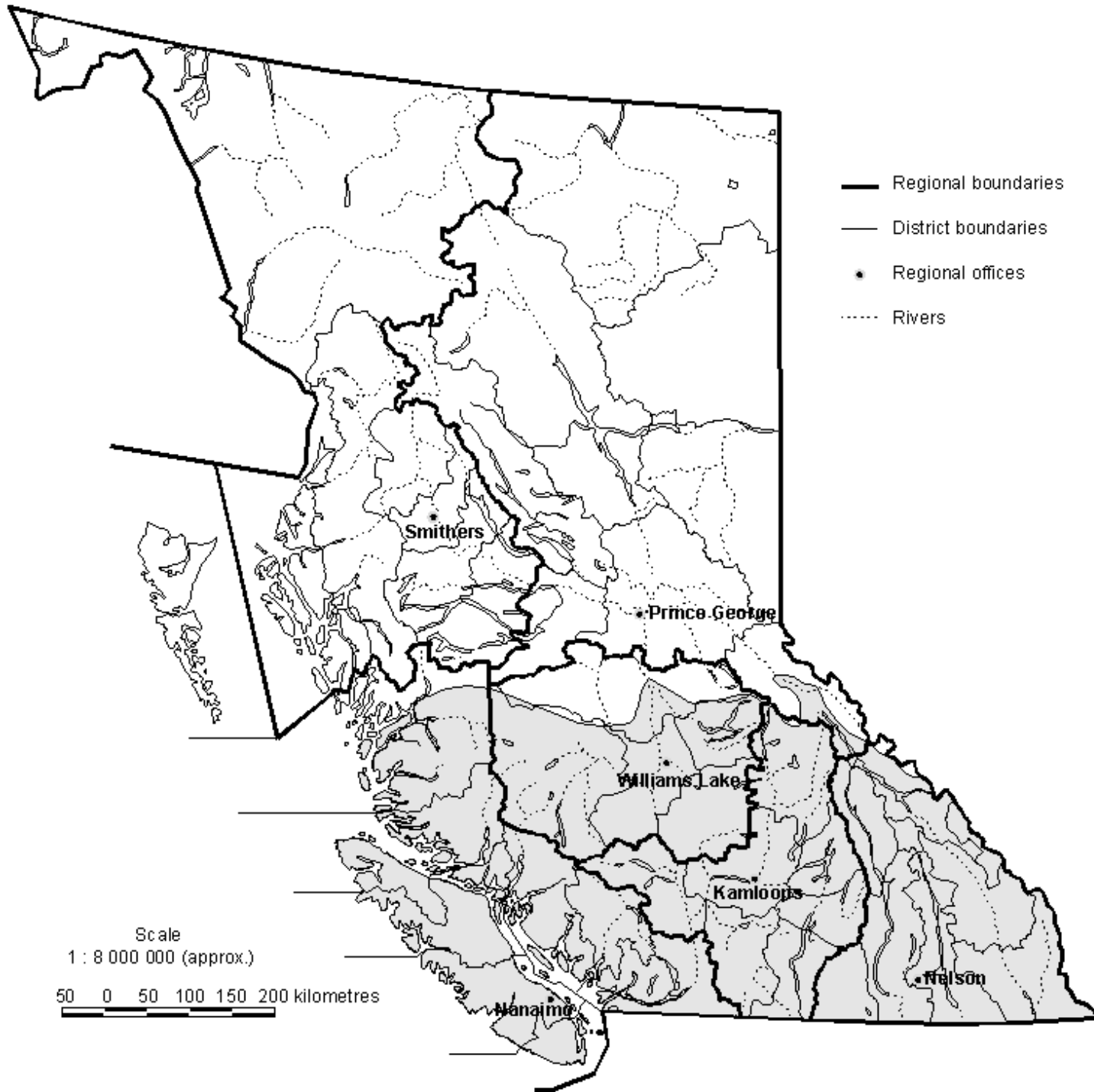


Figure 2. Distribution of laminated root rot in British Columbia.

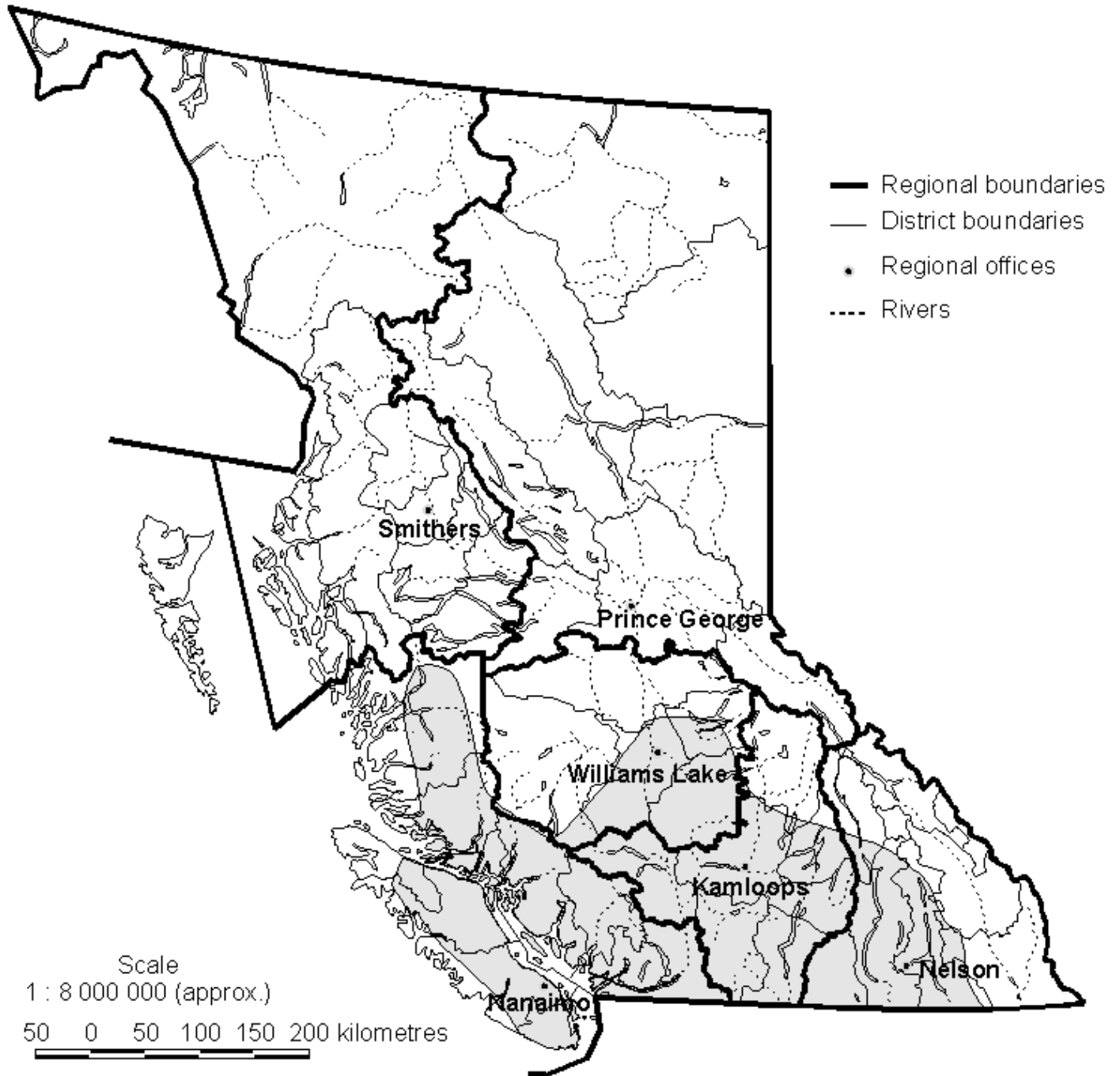


Figure 3. Distribution of *Tomentosus* root rot in British Columbia

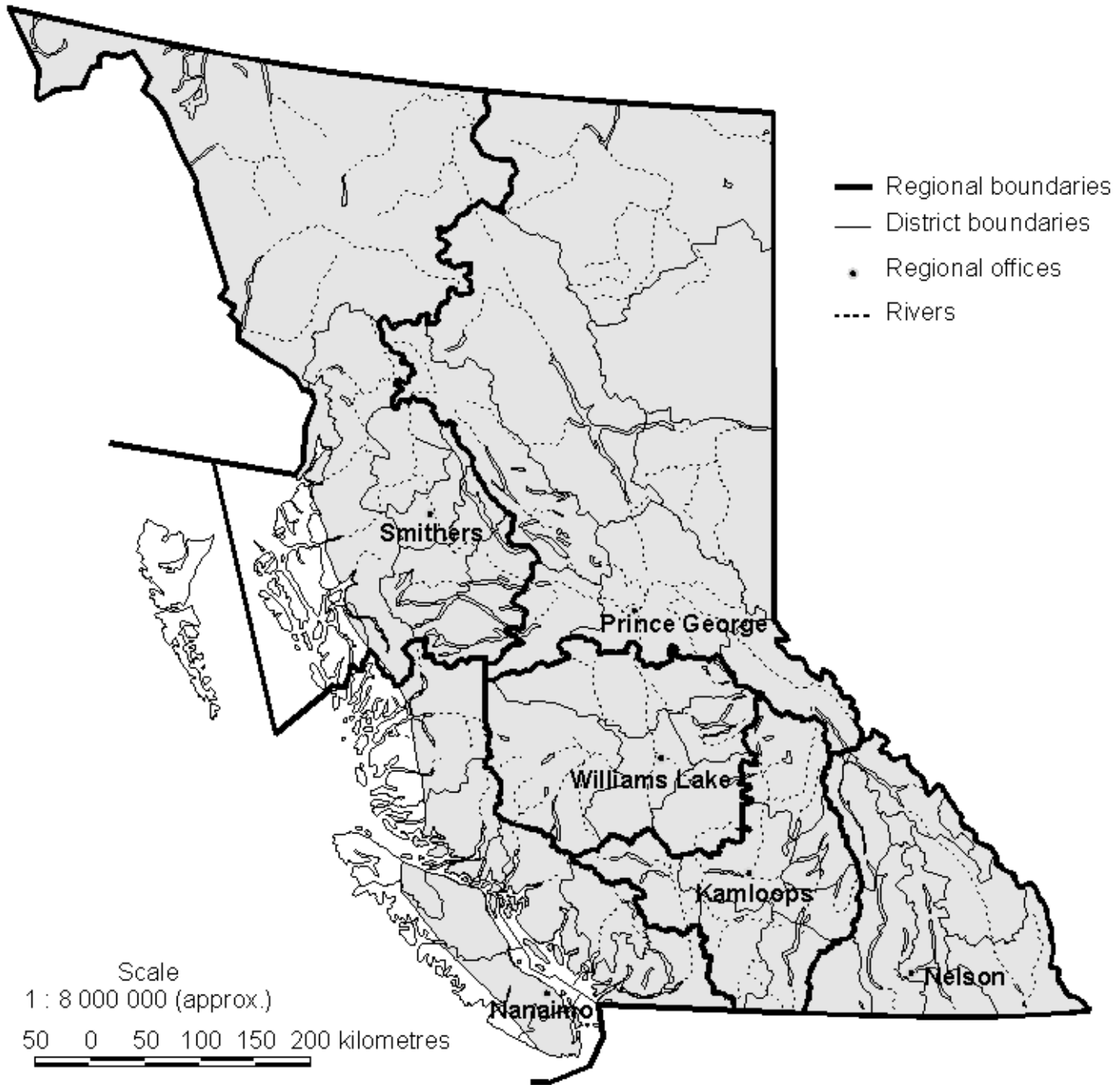


Figure 4. Distribution of blackstain root disease (Douglas-fir variety) in British Columbia.

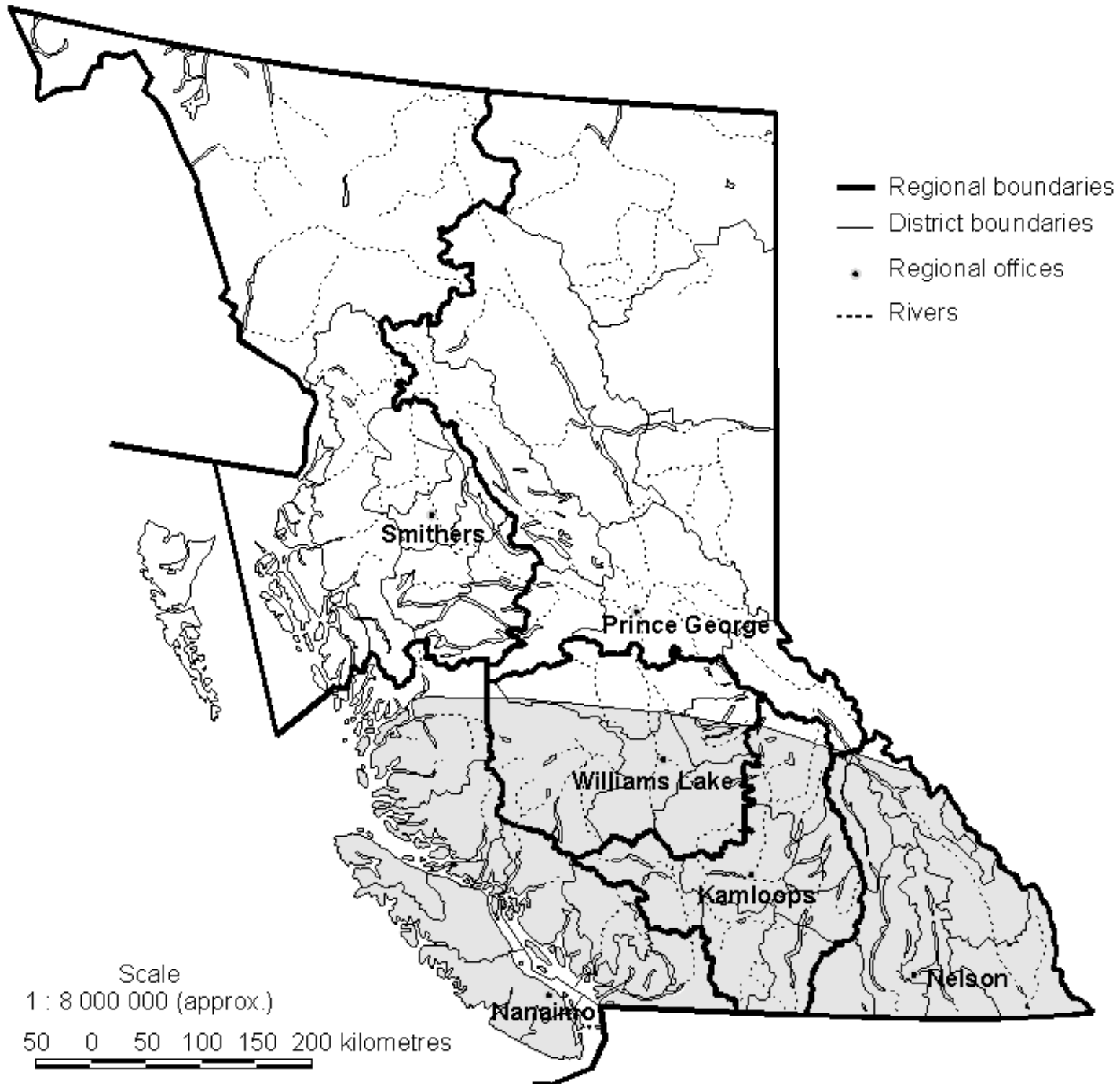


Figure 5. Distribution of blackstain root disease (pine variety) in British Columbia.

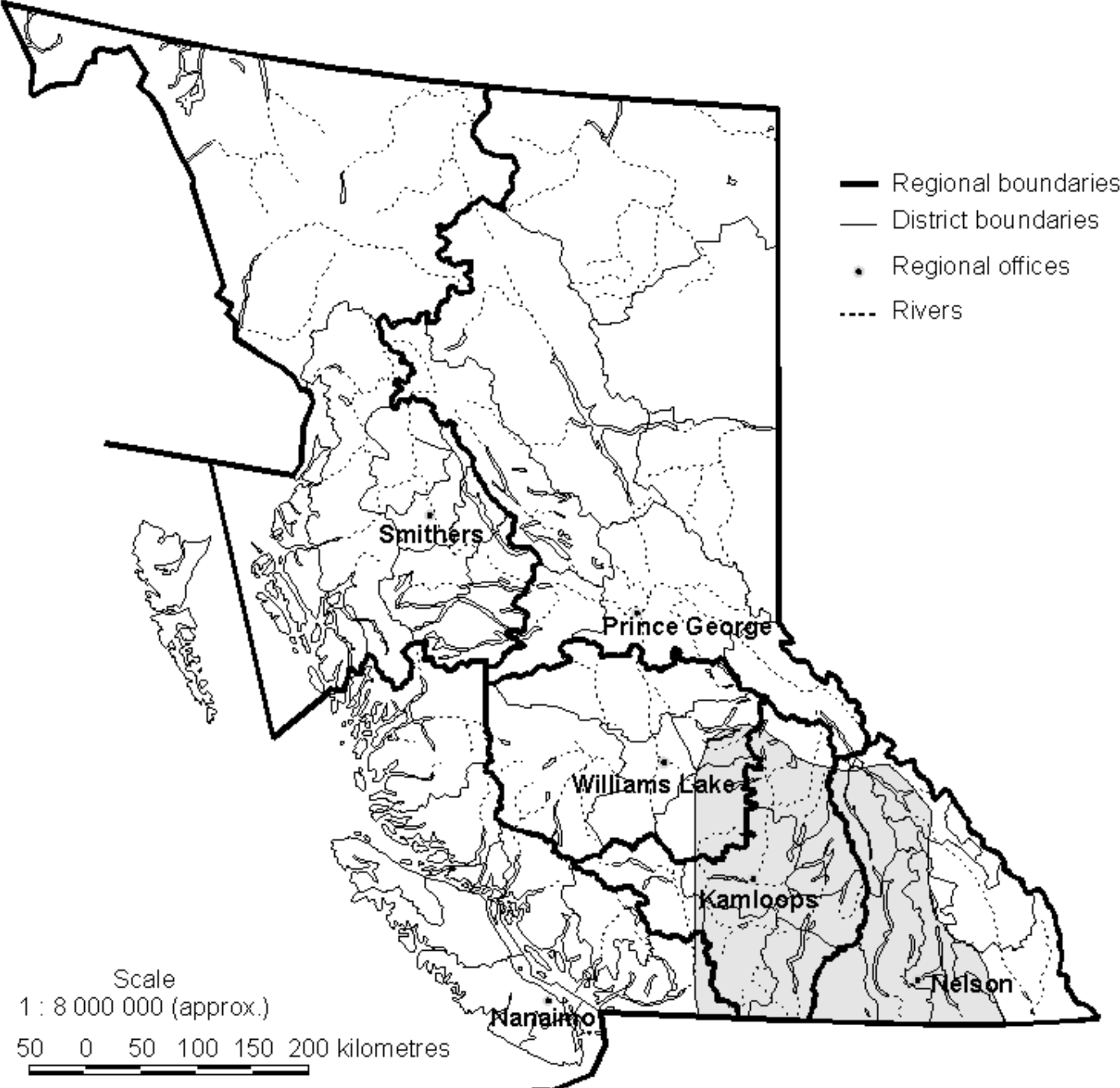


Figure 6. Distribution of *Annosus* root disease in British Columbia.

