

2021 Major Timber Processing Facilities in British Columbia

Ministry of Forests

Foreword

This edition of the *Major Primary Timber Processing Facilities in British Columbia* report summarizes the activity of timber processing facilities operating in 2021. It covers lumber mills, veneer/plywood/OSB/panel mills, pulp/paper mills, chip mills, pellet mills, shake and shingle mills, utility pole/pole/post mills and log home mills. For those firms producing more than one product, each product is listed in the corresponding section of this report. However, information about secondary manufacturing facilities (e.g., remanufacturing or millwork) operating in the province is beyond the scope of this report.

Information contained in this report was gathered through the 2021 and earlier surveys of individual processing facilities. If survey responses were not provided, staff of the Ministry of Forests might use trade publications and corporate annual reports to make estimates. In some cases, Ministry staff provided estimates based on their knowledge of operations and information reported in previous years, as well as production information for selected forest products from Statistics Canada.

This report has been developed by the Economics and Trade Branch with the cooperation of mill representatives and industry associations that provided data and support for the B.C. Mill List survey.

This report is available online at:

<https://www2.gov.bc.ca/gov/content/industry/forestry/competitive-forest-industry/forest-industry-economics/fibre-mill-information/major-timber-processing-facilities-survey>

Please note that any comments or corrections could be sent to Mill.Survey@gov.bc.ca or by mail to the following location:

Economics and Trade Branch
Ministry of Forests
PO Box 9514, STN PROV GOVT
3rd Floor, 545 Superior Street
Victoria B.C. V8V 1T7

This report acknowledges that its development and writing was done with respect on the territorial lands of the ɫə́kʷəŋən, Songhees and Esquimalt Peoples whose historical relationships with the land continue to this day.



List of Figures

Figure 1: Total Primary Log Use – 51 million m ³ - 2021	5
Figure 2: Coast Lumber Mills (at least 40 Million Board Feet) –Capacity, Output, and Log Input	7
Figure 3: Interior Lumber Mills (at Least 40 Million Board Feet) –Capacity, Output, and Log Input	7
Figure 4: B.C. Lumber Mills (at Least 40 Million Board Feet) –Number of Mills and Average Capacity	8
Figure 5: B.C. Lumber Mills (at Least 40 Million Board Feet) –Capacity Utilization	8
Figure 6: B.C. Lumber Mills (at Least 40 Million Board Feet) –Lumber Recovery Factor	9
Figure 7: B.C. Veneer Mills –Capacity, Output, and Log Input.....	11
Figure 8: B.C. Veneer Mills –Number of Mills and Average Capacity	11
Figure 9: B.C. Veneer Mills – Capacity Utilization	12
Figure 10: B.C. Veneer Mills – Recovery Factor	12
Figure 11: B.C. Pulp Mills –Capacity, Output, and Input.....	14
Figure 12: B.C. Pulp Mills –Capacity Utilization	14
Figure 13: B.C. Paper Mills –Capacity and Output	15
Figure 14: B.C. Paper Mills –Capacity Utilization	15
Figure 15: B.C. Pellet Mills –Capacity, Output, and Fibre Input.....	17
Figure 16: B.C. Pellet Mills –Capacity Utilization	17
Figure 17: Number of Shake and Shingle Mills	18
Figure 18: B.C. Shake and Shingle Mills –Capacity, Output, and Log Input	18
Figure 19: B.C. Shake and Shingle Mills –Capacity Utilization	19
Figure 20: Administrative Areas and Natural Resource District Boundaries	20

List of Tables

Table 1: Estimated B.C. Log Use and Log Availability – 2021.....	4
Table 2: B.C. Lumber Mill Statistics for Mills with the Estimated Annual Capacity of at Least 40 Million Board Feet.....	14
Table 3: B.C. Veneer Mill Summary Statistics for Mills with Annual Log Consumption of at Least 25,000 Cubic Metres ...	10
Table 4: B.C. Pulp and Paper Mill Summary Statistics	13
Table 5: B.C. Pellet Mill Summary Statistics.....	16
Table 6: Lumber Mills with Capacity at Least 40 Million Board Feet - 2021.....	22
Table 7: Lumber Mills with Capacity Less than 40 Million Board Feet – 2021	24
Table 8: Pulp and Paper Mills – 2021.....	27
Table 9: Veneer, Plywood, OSB, and Panel Mills – 2021	29
Table 10: Chip Mills - 2021.....	31
Table 11: Pellet Mills – 2021	33
Table 12: Post, Utility Pole, and Pole Mills – 2021.....	35
Table 13: Shake and Shingle Mills – 2021	37
Table 14: Log Home Mills - 2021.....	39



Key Definitions and Abbreviations

Key Definitions

Major Primary Timber Processing Facilities: Facilities that process logs or wood residue. They include whole log chipping, lumber, pulp and paper, veneer/plywood/laminated veneer lumber (LVL), oriented strand board (OSB), shake and shingle, pole/utility pole/post, panel, and log home mills. They do not include secondary manufacturing facilities that use lumber as their major input.

Hog Fuel: Waste wood material derived from a grinding or milling process. It is normally ground down to specific characteristics for use as a fuel to power equipment used in timber processing facilities or bioenergy plants. It can also be used in other areas such as paddocks, gardens, and pathways.

Hog fuel can be obtained as a residual from a milling process, which can contain a mixture of bark and wood waste. It can also be obtained by grinding undesirable trees, stumps, branches, and wood pieces from industrial/home demolition.

Abbreviations for Products

CHP	Chip	PLY	Plywood	PPR	Paper
LBR	Lumber	PNL	Panel	SS	Shake and Shingle
LVL	Laminated Veneer Lumber	PST	Fence Post	SID	Siding
OSB	Oriented Strand Board	PLE	Pole	UTI	Utility Pole
PLT	Pellet	PLP	Pulp	VNR	Veneer

Introduction

This report provides summary statistics derived from the 2021 and earlier mill surveys. The 2021 report presents only selected series of charts and tables, and does not extensively cover fiber supply and consumption or industry analysis. A comprehensive version, similar to the 2020, report will be published for survey year 2022. The Appendix to this report provides lists of mills operating in 2021.

Each year, surveys are sent to mill representatives. Based on their responses, mills are classified as a) open with responses, b) presumed open without responses, c) did not operate at all during the year (temporary or indefinite closures), or d) closed (permanently). The statistics in this report are derived from mills in categories a) and b). Mills that announced permanent full-mill closures in 2021 are categorized as a) for the year 2021 if they operated at some point during 2021. The actual impact of these closed mills will be reported in the next report.

Please note that some historical information in this report has been adjusted to reflect the latest information received from our mill contacts or regional staff and therefore, may differ from the information published in previous reports.

Provincial Log Supply and Demand

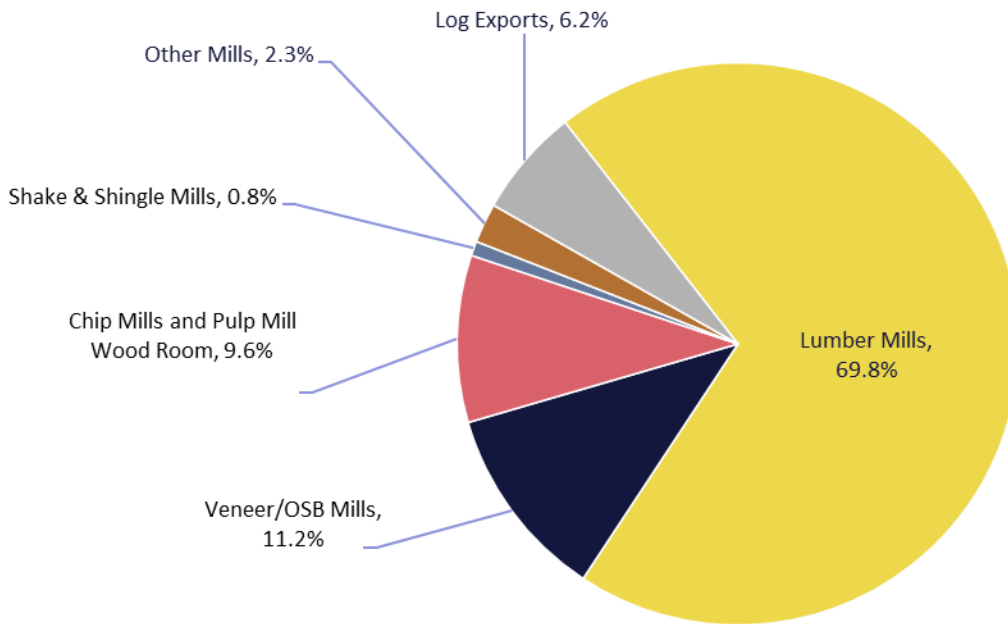
Table 1: Estimated B.C. Log Use and Log Availability, 2021

	Number of Mills	Est. Volume Used (000 m ³)	Per Cent	Number of Mills	Est. Volume Used (000 m ³)	Per Cent	Number of Mills	Est. Volume Used (000 m ³)	Per Cent
Primary Log Use		Coast			Interior			Province	
Lumber Mills	44	6,962	48.5%	69	29,819	77.9%	113	36,781	69.8%
Veneer/OSB Mills	5	2,135	14.9%	12	3,764	9.8%	17	5,899	11.2%
Chip Mills and Pulp Mill Wood Room	11	1,909	13.3%	11	3,149	8.2%	22	5,058	9.6%
Shake & Shingle Mills	29	411	2.9%	5	29	0.1%	34	440	0.8%
Other Mills	8	145	1.0%	44	1,053	2.7%	52	1,198	2.3%
Log Exports	-	2,795	19.5%	-	488	1.3%	-	3,283	6.2%
TOTAL	97	14,357	100%	141	38,302	100%	238	52,659	100%
Log Availability		Coast			Interior			Province	
Total Harvest		14,270			38,372			52,642	
Log Imports		-			-			73	
TOTAL		14,270			38,372			52,716	
Difference		-88	-0.6%		71	0.2%		56	0.1%

Notes:

1. Total harvest includes all logs, special forest products, species and grades billed to the Crown, private and federal lands. Waste, reject, and Christmas trees are excluded.
2. Other mills listed include utility pole mills, fence pole mills, post mills, pellet mills, and log home mills.
3. The Veneer/OSB mills category includes logs consumed by an OSB mill that recently changed its production line to produce both OSB and siding products.

Figure 1: Total Primary Log Use – 51 million m³ - 2021



Sources: B.C. Mill List Survey; B.C. Stats; B.C. Ministry of Forests log export statistics for the proportion of exports from the Coast versus Interior.



Table 2: B.C. Lumber Mill Statistics for Mills with an Estimated Annual Capacity of at Least 40 Million Board Feet

COAST	Units	2000-2009	2010	2011	2012	2013	2014	2015	2016	2017	2018	2019	2020	2021	% change 2000-2021
Number of Mills		27	21	20	17	17	18	17	18	18	17	17	17	18	-51%
Total Capacity	billion board feet per year	3.1	2.3	2.3	2.1	2.1	2.1	2.0	2.1	2.0	1.9	1.9	2.0	1.9	-54%
Total Output	billion board feet per year	2.2	1.4	1.4	1.4	1.4	1.7	1.6	1.7	1.5	1.5	1.1	1.1	1.5	-52%
Total Input	million cubic metres per year	9.8	5.9	6.2	6.3	6.3	7.2	6.9	7.4	6.6	6.4	4.9	5.0	6.5	-53%
Average Capacity	million board feet per mill per year	114	110	115	124	124	117	118	117	111	112	112	118	106	-5%
Capacity Utilization	output divided by capacity	71%	61%	61%	67%	67%	81%	80%	81%	75%	79%	58%	55%	79%	4%
Lumber Recovery Factor	'000 board feet per cubic metre	0.229	0.237	0.226	0.222	0.222	0.236	0.232	0.230	0.227	0.234	0.224	0.220	0.231	3%

INTERIOR	Units	2000-2009	2010	2011	2012	2013	2014	2015	2016	2017	2018	2019	2020	2021	% change 2000-2021
Number of Mills		70	52	56	54	52	53	52	51	51	50	52	45	43	-43%
Total Capacity	billion board feet per year	11.8	10.4	11.1	10.9	10.6	10.8	10.4	10.6	10.5	10.3	10.2	9.2	8.9	-17%
Total Output	billion board feet per year	11.7	9.5	10.5	10.8	11.2	10.9	11.2	11.5	11.4	10.8	9.1	8.5	8.3	-21%
Total Input	million cubic metres per year	42.4	34.1	37.0	38.6	39.9	39.3	39.4	40.7	39.4	37.9	31.7	29.3	29.5	-26%
Average Capacity	million board feet per mill per year	170	200	198	202	204	204	200	208	206	206	196	204	207	47%
Capacity Utilization	output divided by capacity	99%	91%	95%	99%	106%	101%	108%	108%	109%	105%	89%	92%	93%	-5%
Lumber Recovery Factor	'000 board feet per cubic metre	0.276	0.279	0.284	0.280	0.281	0.277	0.284	0.283	0.289	0.285	0.287	0.290	0.281	7%

PROVINCE	Units	2000-2009	2010	2011	2012	2013	2014	2015	2016	2017	2018	2019	2020	2021	% change 2000-2021
Number of Mills		97	73	76	71	69	71	69	69	69	67	69	62	61	-46%
Total Capacity	billion board feet per year	14.9	12.7	13.4	13.0	12.7	12.9	12.4	12.7	12.5	12.2	12.1	11.2	10.8	-27%
Total Output	billion board feet per year	14.0	10.9	11.9	12.2	12.6	12.6	12.8	13.2	12.9	12.3	10.2	9.6	9.8	-28%
Total Input	million cubic metres per year	52.1	40.0	43.2	44.9	46.2	46.5	46.3	48.1	46.0	44.3	36.6	34.3	36.0	-33%
Average Capacity	million board feet per mill per year	155	174	176	183	184	182	180	184	181	182	175	181	177	35%
Capacity Utilization	output divided by capacity	93%	86%	89%	94%	99%	98%	103%	104%	103%	101%	84%	86%	91%	-1%
Lumber Recovery Factor	'000 board feet per cubic metre	0.268	0.273	0.275	0.272	0.273	0.271	0.276	0.274	0.280	0.278	0.279	0.280	0.272	8%

Source: Major Primary Timber Processing Facilities in British Columbia, Ministry database, various years.

Notes:

1. The above lists only include lumber mills with a minimum estimated annual capacity of 40 million board feet per year.
2. The third column of this table shows the average mill information between 2000 and 2009.
3. Output capacity is estimated based on two 8-hour shifts per day and 240 days per year.



Figure 2: Coast Lumber Mills (at least 40 Million Board Feet) –Capacity, Output, and Log Input

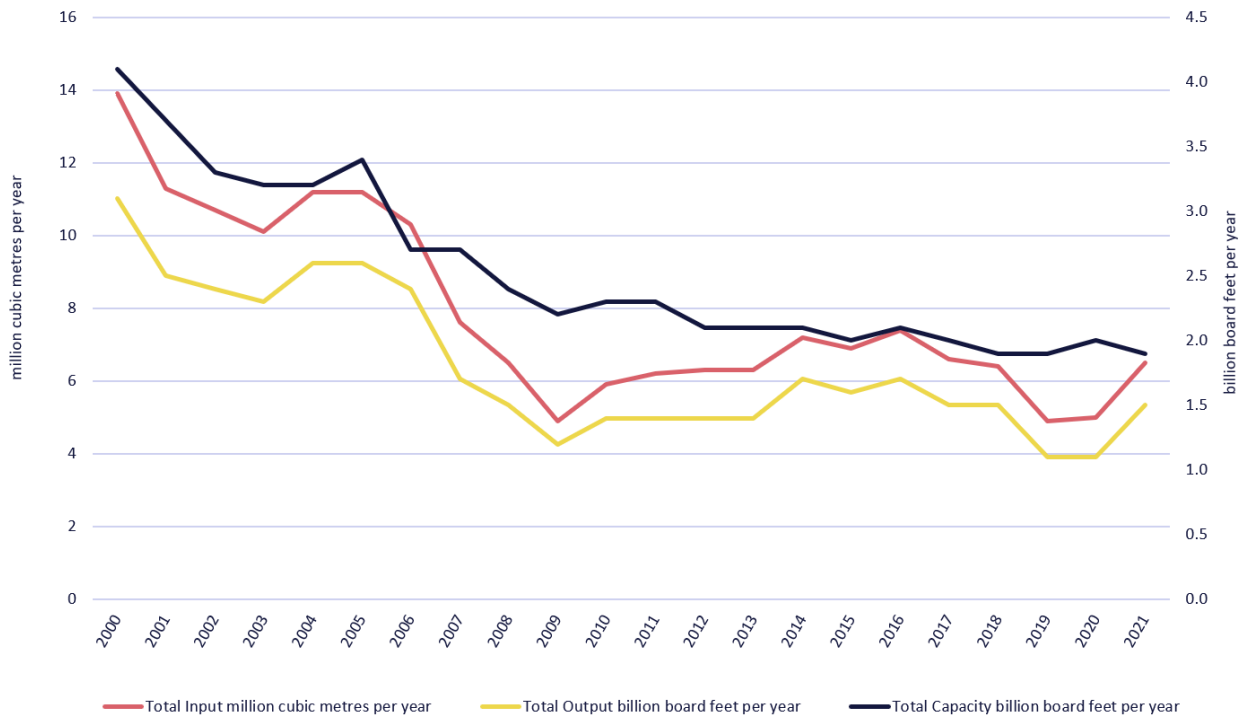


Figure 3: Interior Lumber Mills (at Least 40 Million Board Feet) –Capacity, Output, and Log Input

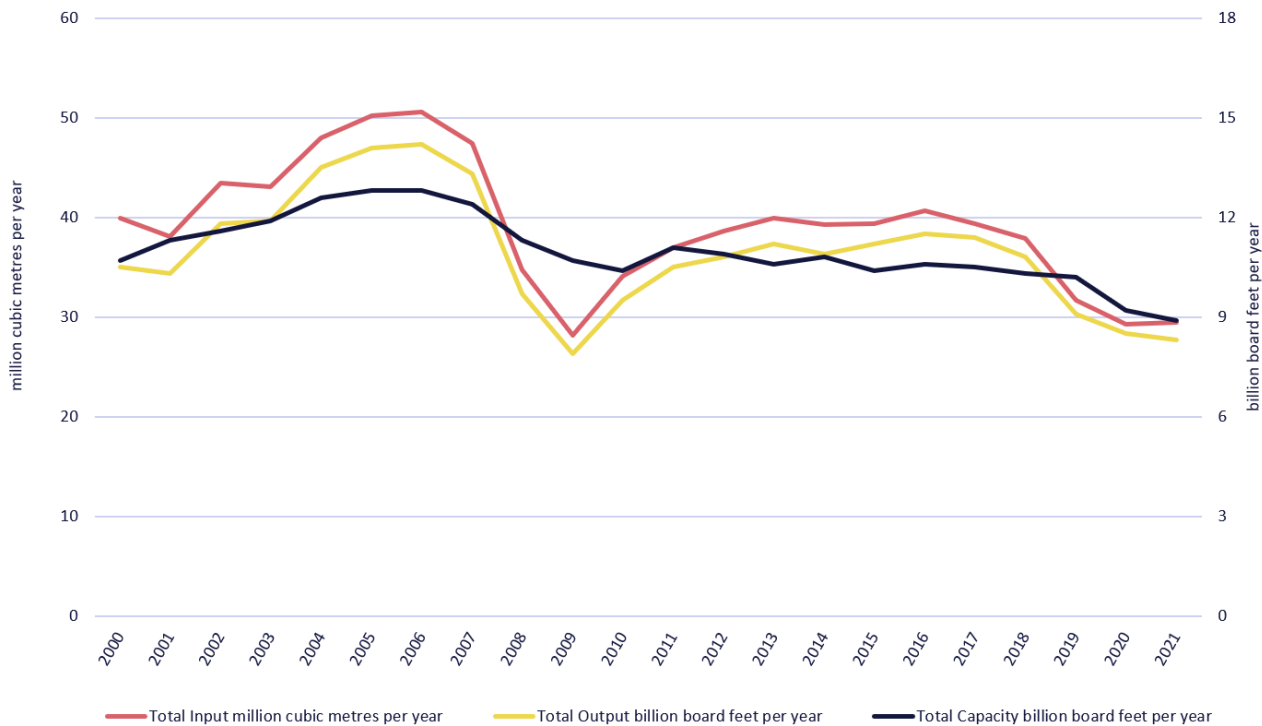




Figure 4: B.C. Lumber Mills (at Least 40 Million Board Feet) –Number of Mills and Average Capacity

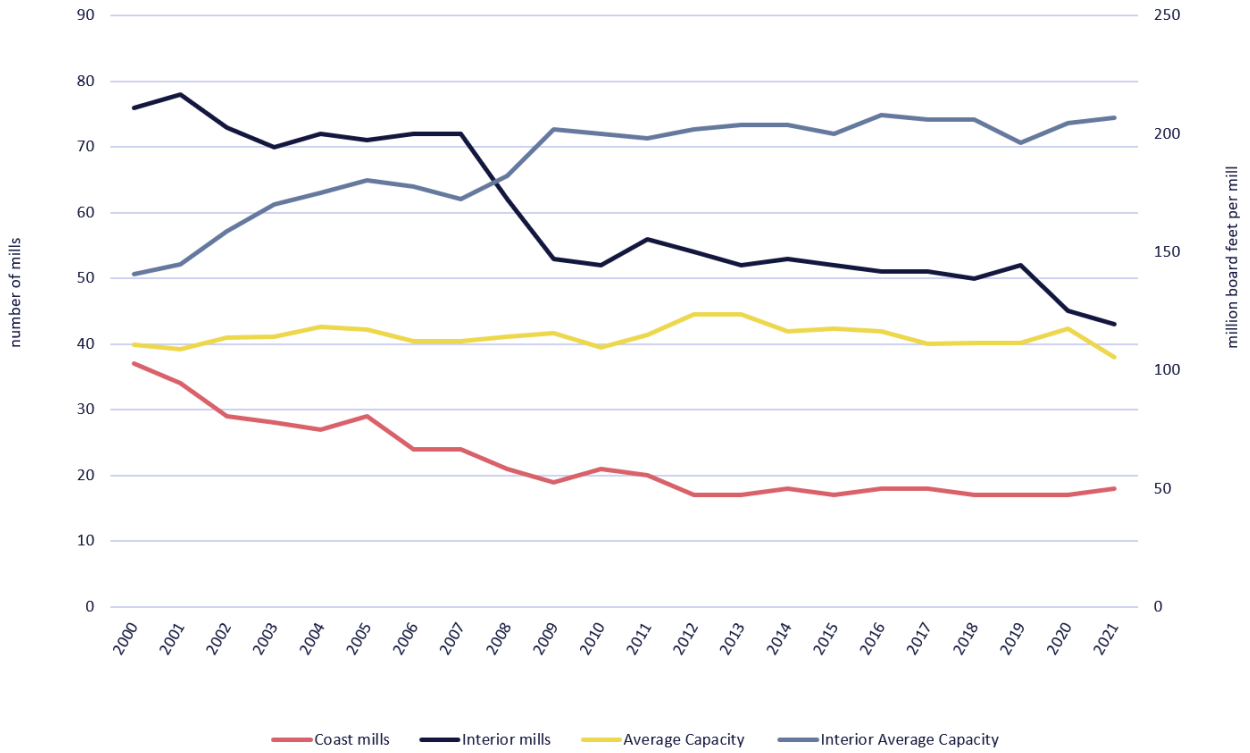


Figure 5: B.C. Lumber Mills (at Least 40 Million Board Feet) –Capacity Utilization

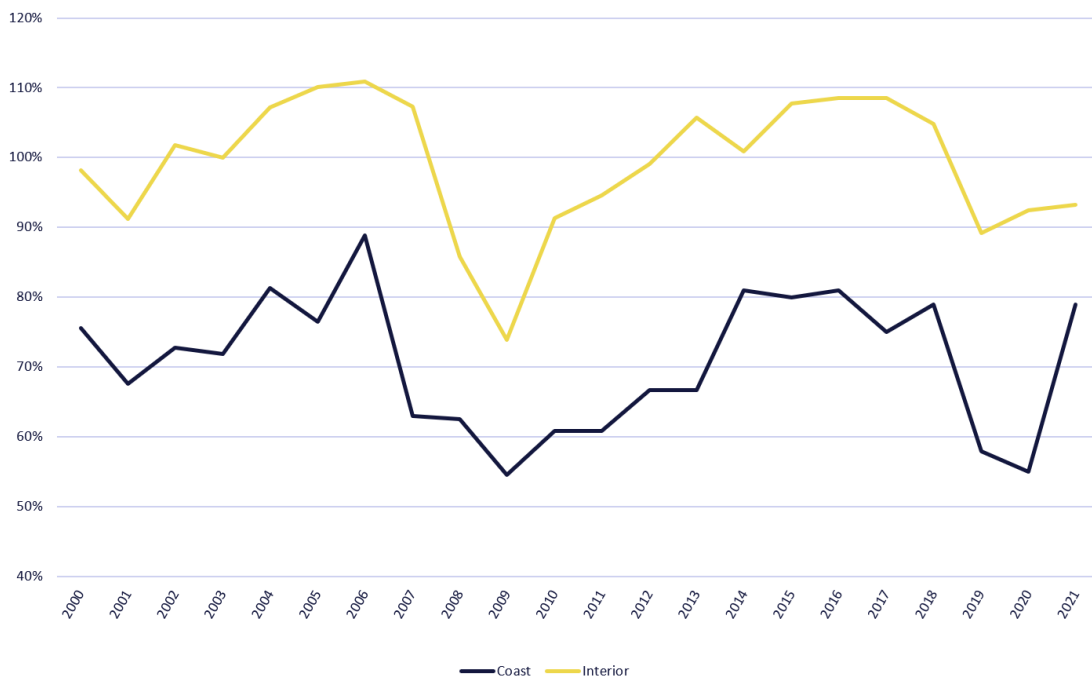




Figure 6: B.C. Lumber Mills (at Least 40 Million Board Feet) –Lumber Recovery Factor

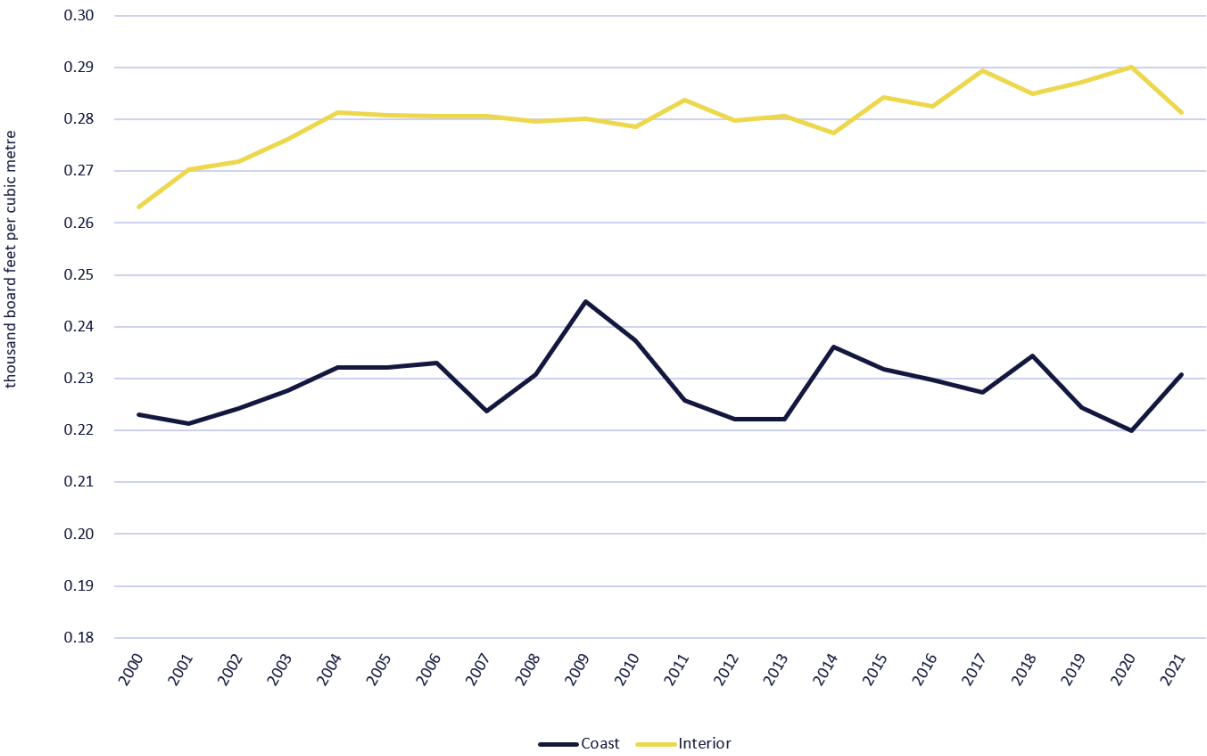




Table 3: B.C. Veneer/OSB/Siding Mill Summary Statistics for Mills with an Annual Log Consumption of at Least 25,000 Cubic Metres

	Units	2000-2009	2010	2011	2012	2013	2014	2015	2016	2017	2018	2019	2020	2021	% change 2000-2021
Number of Mills		19	13	14	14	14	14	14	15	15	15	15	14	15	-21%
Total Capacity	(billion square feet 3/8" basis)	3.8	3.5	3.7	3.4	3.4	3.5	3.3	3.5	3.7	3.4	3.3	2.6	3.4	13%
Total Output	(billion square feet 3/8" basis)	4.2	3.0	3.2	3.2	3.5	3.6	3.7	4.2	4.2	4.1	3.8	3.1	3.8	2%
Total Log Input	(million cubic metres)	7.0	5.1	5.3	5.0	5.4	5.7	6.1	6.9	6.8	6.5	6.1	4.9	5.9	-5%
Average Capacity	(million square feet per mill)	203	268	264	244	246	248	236	234	244	230	223	184	227	43%
Average Log Input	(thousand cubic metres per mill)	371	390	378	359	387	406	434	457	452	436	403	348	392	20%
Capacity Utilization	(output divided by capacity)	112%	87%	88%	93%	102%	104%	113%	119%	116%	120%	115%	120%	113%	-10%
Recovery Factor	(square feet per cubic metre log input)	605	597	614	632	649	636	616	606	624	631	634	637	653	7%

Source: Major Primary Timber Processing Facilities in British Columbia, Ministry database, various years.

Notes:

1. Output capacity is estimated based on two 8-hour shifts per day and 240 days per year.
2. The third column of this table shows the average mill information between 2000 and 2009.
3. Small mills using an average of less than 25,000 cubic metres of logs per year are excluded in these statistics.

Figure 7: B.C. Veneer/OSB/Siding Mills –Capacity, Output, and Log Input

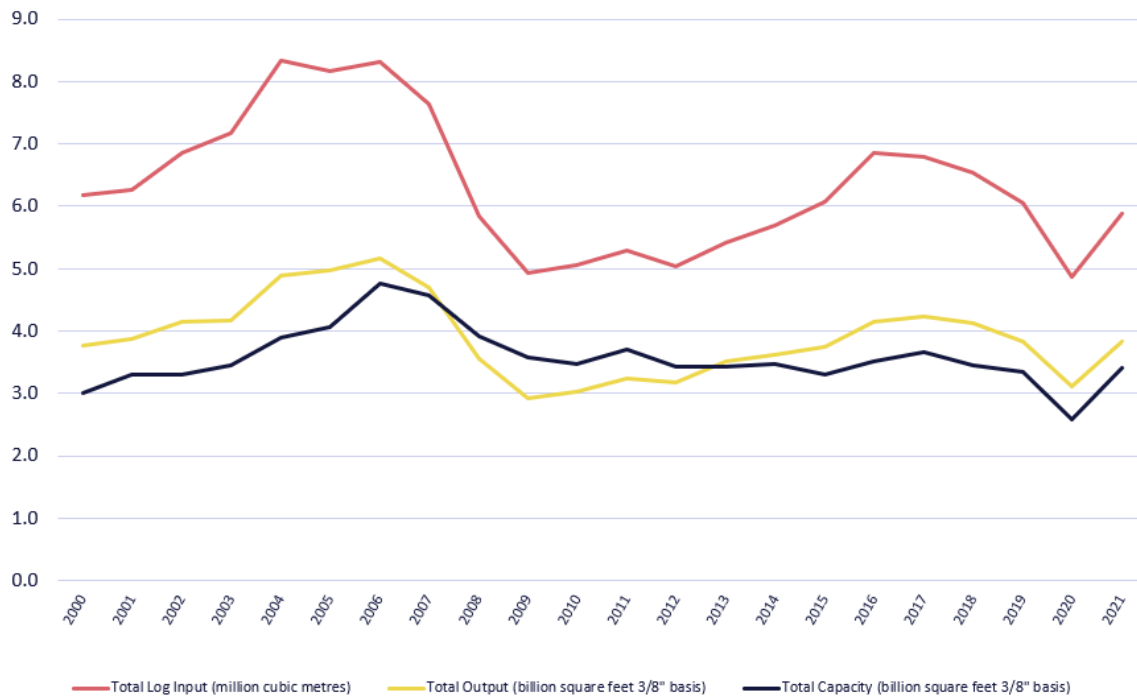


Figure 8: B.C. Veneer/OSB/Siding Mills –Number of Mills and Average Capacity

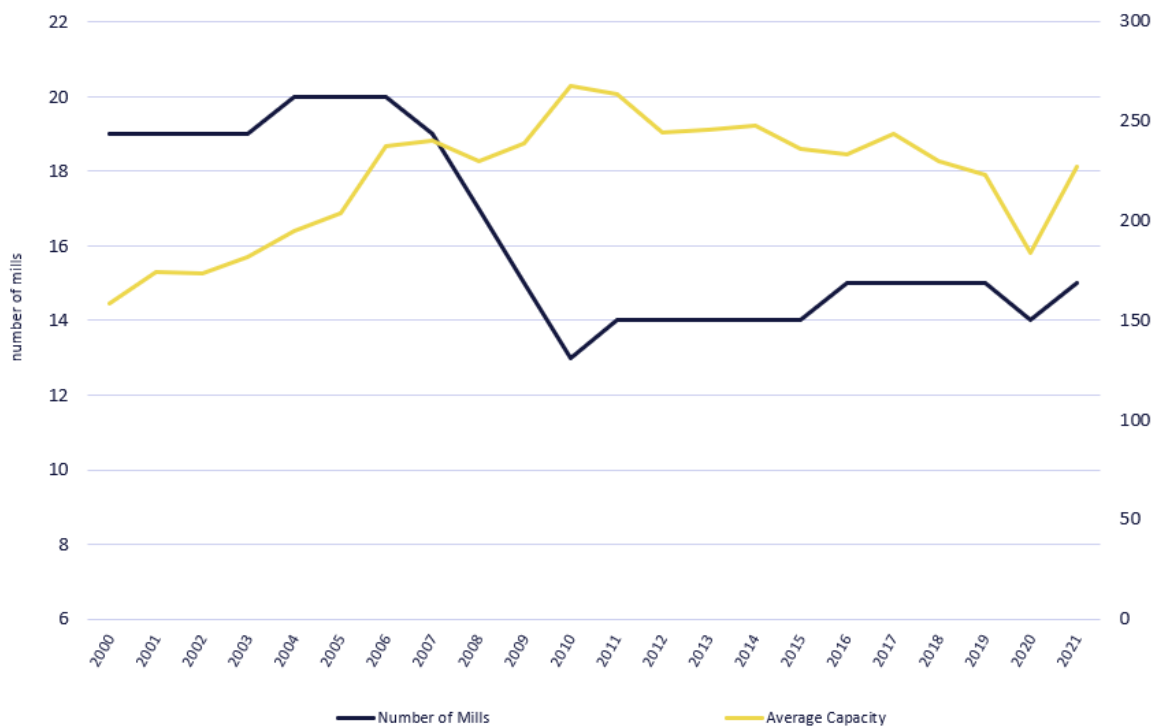


Figure 9: B.C. Veneer/OSB/Siding Mills – Capacity Utilization

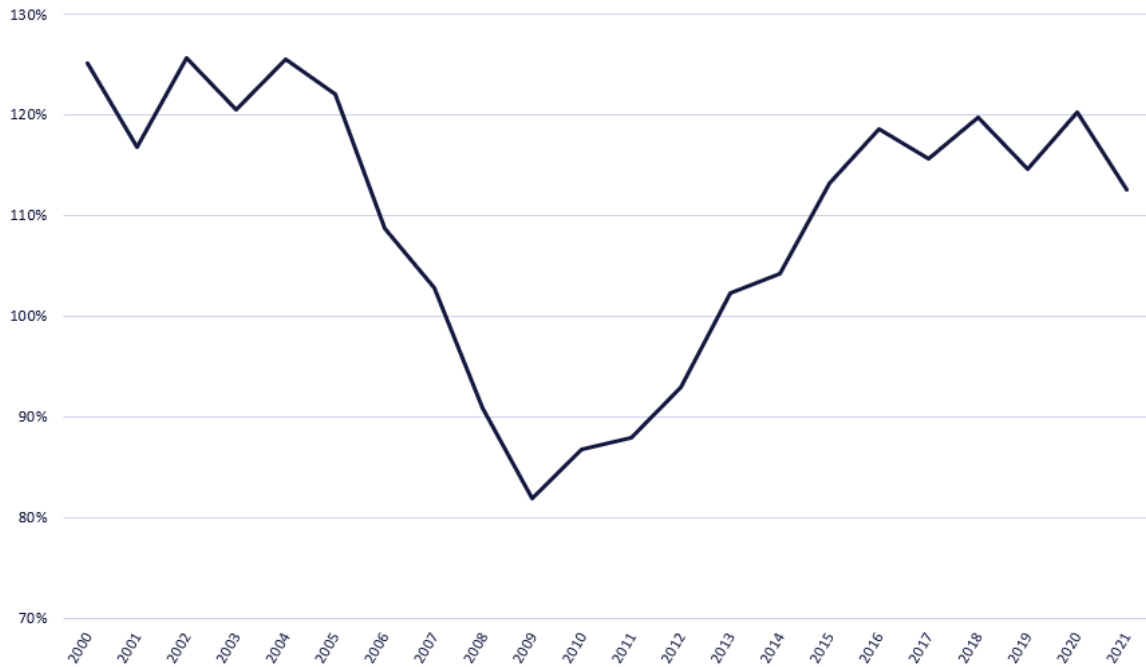


Figure 10: B.C. Veneer/OSB/Siding Mills – Recovery Factor

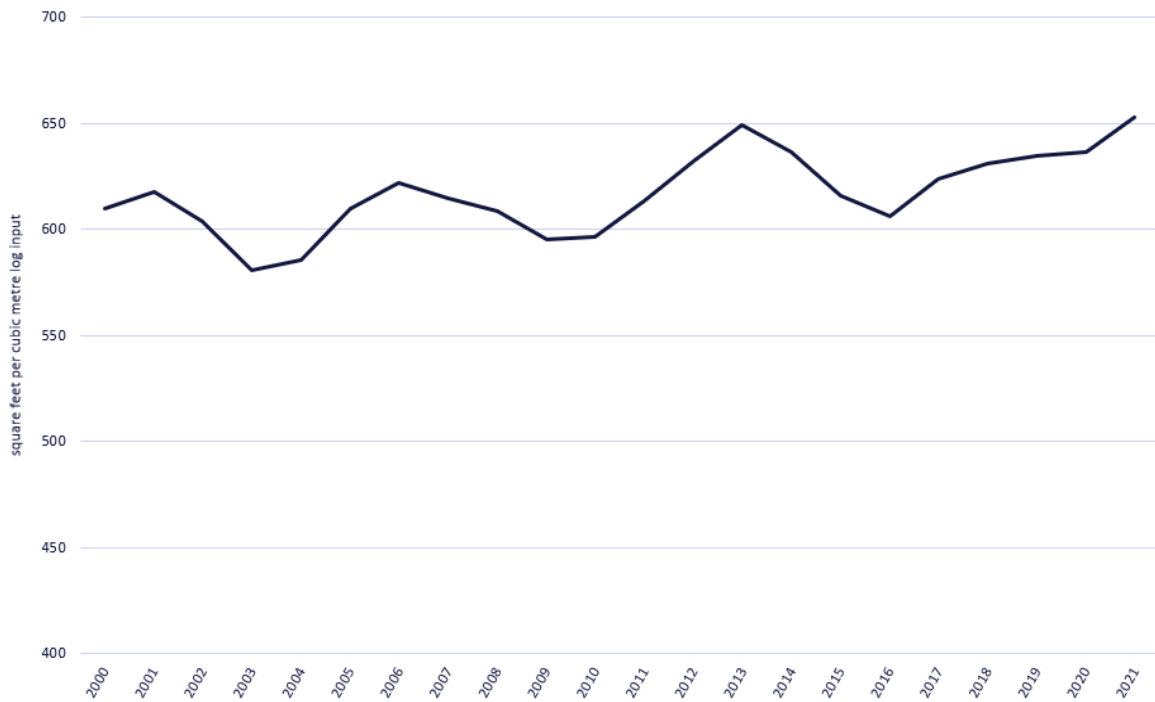




Table 4: B.C. Pulp and Paper Mill Summary Statistics

Pulp Mills	Units														% Change 2000-2021
		2000-2009	2010	2011	2012	2013	2014	2015	2016	2017	2018	2019	2020	2021	
Number of Pulp Mills		21	18	18	18	16	16	17	15	15	15	15	15	14	-36%
Total Capacity	(million tonnes)	7.17	5.96	6.02	5.87	5.66	5.65	5.85	5.21	5.17	5.26	5.24	5.15	4.83	-35%
Total Output	(million tonnes)	6.65	5.49	5.76	5.80	5.50	5.63	5.69	5.20	5.18	5.05	4.84	4.38	4.43	-38%
Total Fibre Input	(million bone dry units)	11.39	8.29	10.14	9.65	9.29	9.45	9.44	8.95	9.05	8.68	8.55	8.07	7.80	-38%
Average Capacity	(thousand tonnes)	297	331	334	326	354	353	344	348	345	350	349	343	345	2%
Average Fibre Input	(thousand bone dry units)	541	461	563	536	581	590	555	596	603	579	570	538	557	-2%
Capacity Utilization		93%	92%	96%	99%	97%	100%	97%	100%	100%	96%	92%	85%	92%	-5%

Paper Mills	Units														% Change 2000-2021
		2000-2009	2010	2011	2012	2013	2014	2015	2016	2017	2018	2019	2020	2021	
Number of Paper Mills		10	6	6	6	5	6	6	5	5	5	5	5	5	-50%
Total Capacity	(million tonnes)	3.01	1.52	1.52	1.57	1.38	1.61	1.49	1.26	1.24	1.14	1.14	1.09	0.97	-69%
Total Output	(million tonnes)	2.80	1.49	1.48	1.49	1.30	1.48	1.29	1.15	1.15	1.14	0.99	0.59	0.82	-72%
Average Capacity	(thousand tonnes)	297	253	253	261	275	268	248	252	249	228	227	217	193	-37%
Capacity Utilization		93%	98%	98%	95%	94%	92%	87%	91%	92%	100%	88%	54%	85%	-12%

Source: Major Primary Timber Processing Facilities in British Columbia, Ministry database, various years.

Notes:

1. Output capacity is estimated based on three 8-hour shifts per day and 345 days per year.
2. The third column of the above table shows the average mill information between 2000 and 2009.
3. This table has incorporated retroactive data adjustments made by the pulp industry in November 2022.



Figure 11: B.C. Pulp Mills –Capacity, Output, and Input

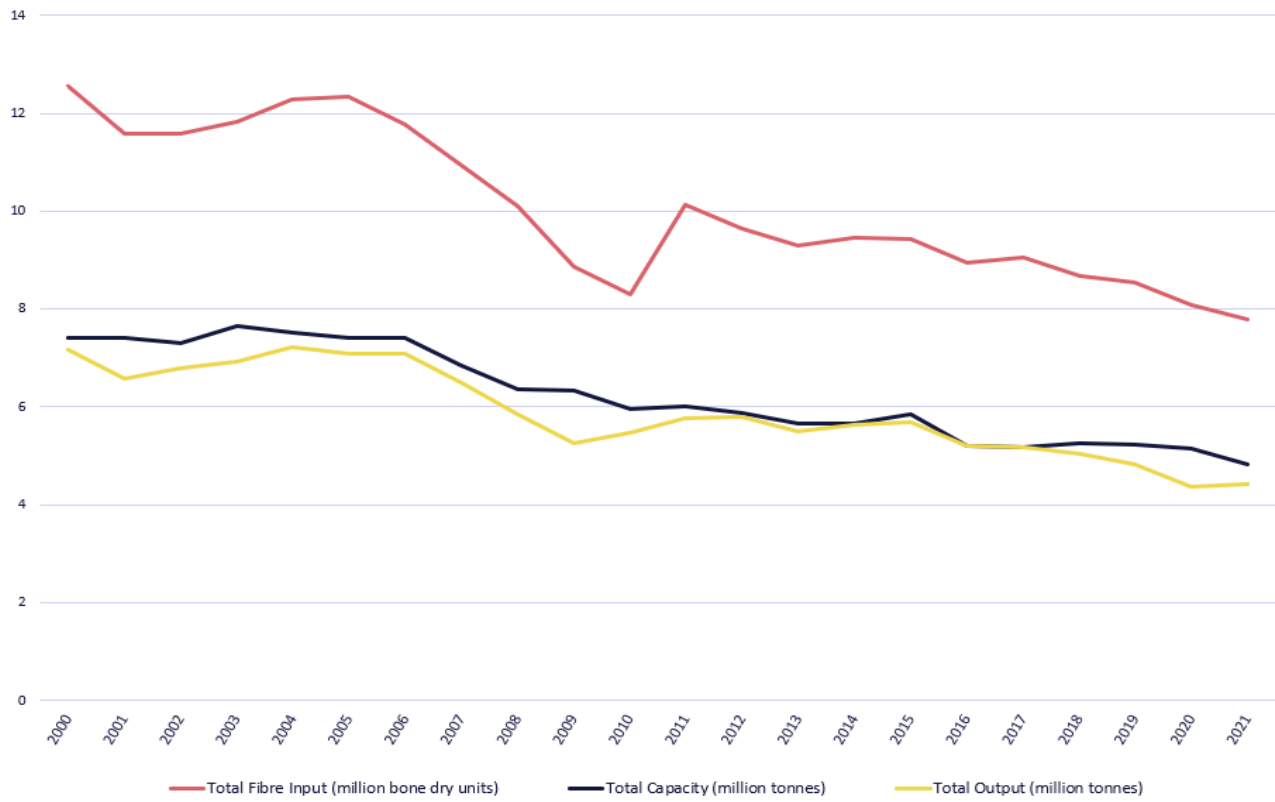


Figure 12: B.C. Pulp Mills –Capacity Utilization

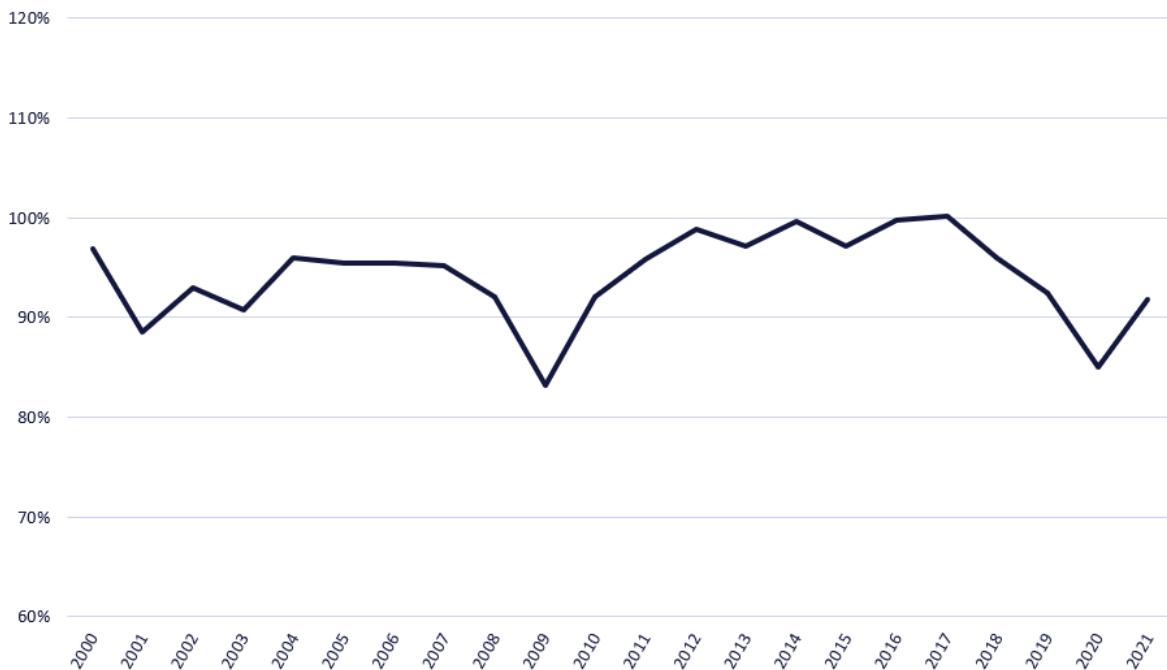




Figure 13: B.C. Paper Mills –Capacity and Output

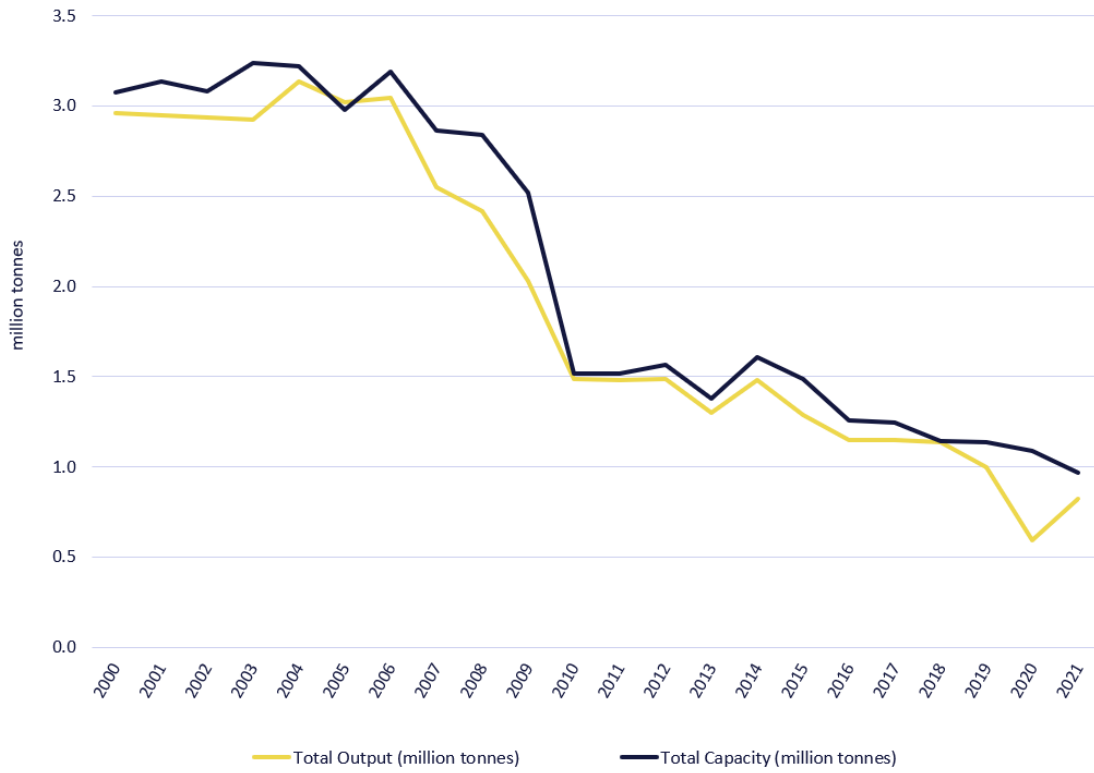


Figure 14: B.C. Paper Mills –Capacity Utilization





Table 5: B.C. Pellet Mill Summary Statistics

	Units	2005-2009	2010	2011	2012	2013	2014	2015	2016	2017	2018	2019	2020	2021	% change 2005-2021
Number of Mills		8	11	11	11	11	12	14	14	13	13	13	14	14	180%
Total Capacity	(million tonnes)	0.84	1.31	1.99	1.67	1.69	1.77	2.05	2.22	2.13	2.17	2.31	2.22	2.21	514%
Total Output	(million tonnes)	0.54	1.11	1.36	1.64	1.68	1.65	1.80	2.06	2.08	2.12	2.09	2.01	2.04	467%
Total Input	(million bone dry units)	0.56	1.13	1.28	1.37	1.58	1.62	1.73	1.92	1.95	1.87	1.93	1.97	1.95	376%
Average Capacity	(000s tonnes)	105	119	181	152	154	148	146	159	164	167	178	159	158	119%
Capacity Utilization	(output divided by capacity)	69%	85%	68%	98%	99%	93%	88%	93%	98%	98%	90%	91%	92%	-8%
Recovery Factor	(Tonnes of output per tonne of bone dry input)	0.95	0.98	1.06	1.20	1.06	1.02	1.04	1.07	1.07	1.13	1.08	1.02	1.05	19%

Source: Major Primary Timber Processing Facilities in British Columbia, Ministry database, various years.

- Notes:
1. Output capacity is estimated based on three 8-hour shifts per day and 345 days per year.
 2. The third column of the table shows the average mill information between 2005 and 2009. 2005 is the first-year information was collected from pellet mills.
 3. For some pellet mills, their reported output may be higher than their reported input due to inventory.



Figure 15: B.C. Pellet Mills –Capacity, Output, and Fibre Input

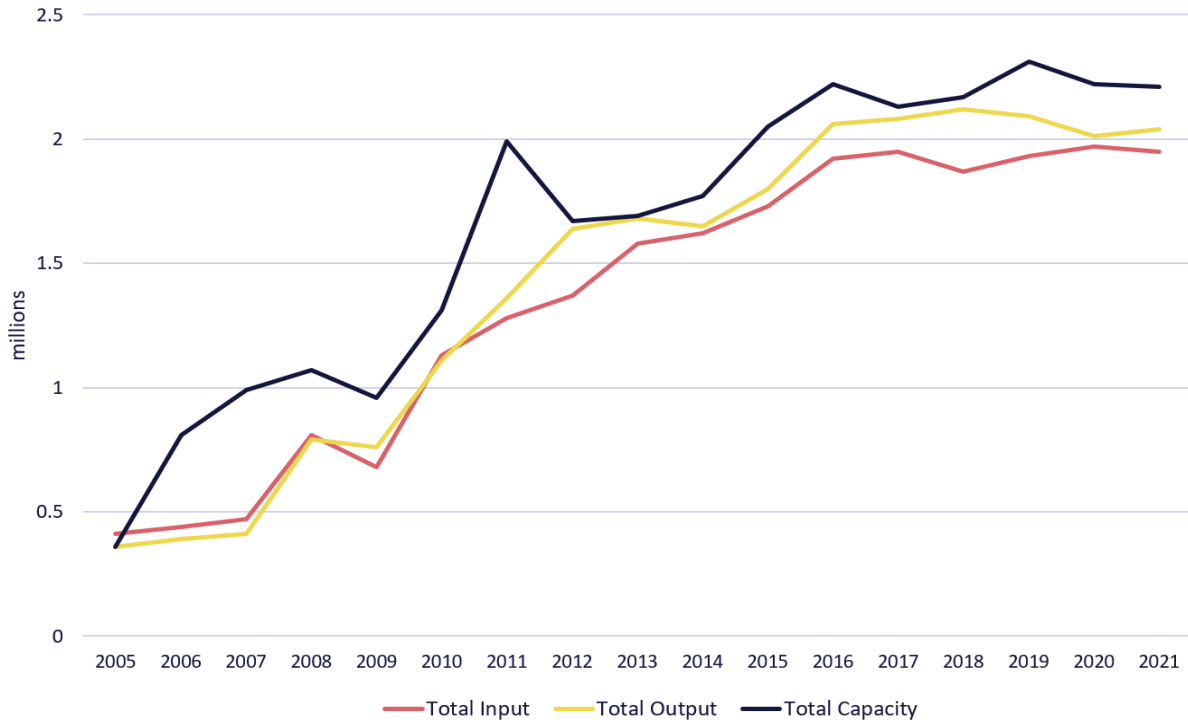


Figure 16: B.C. Pellet Mills –Capacity Utilization

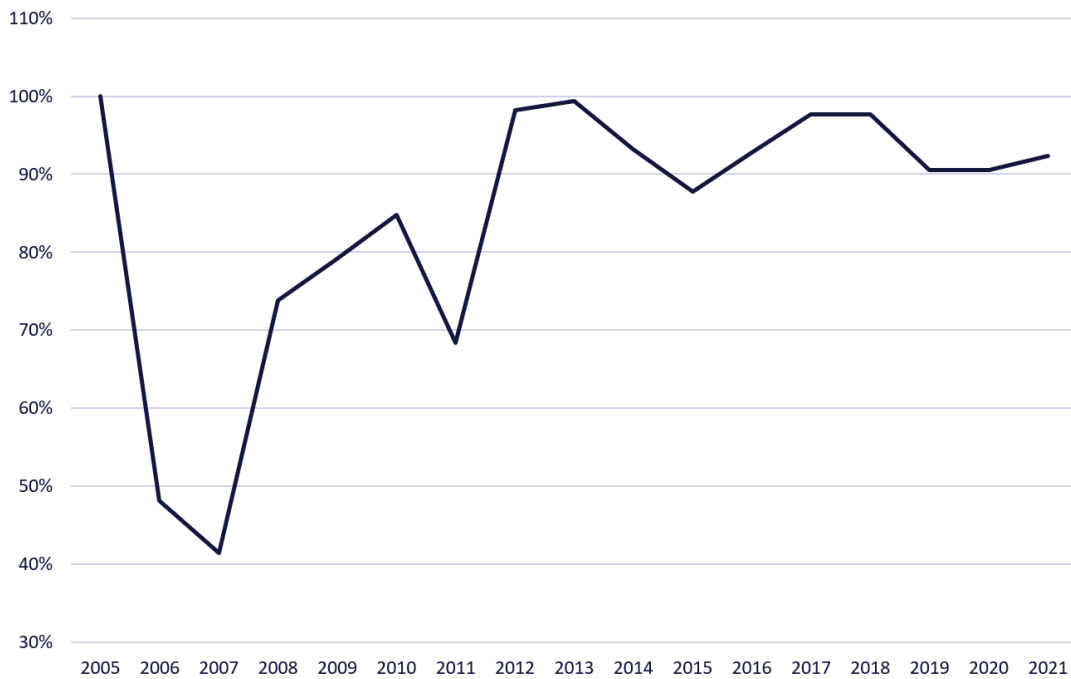




Figure 17: Number of Shake and Shingle Mills

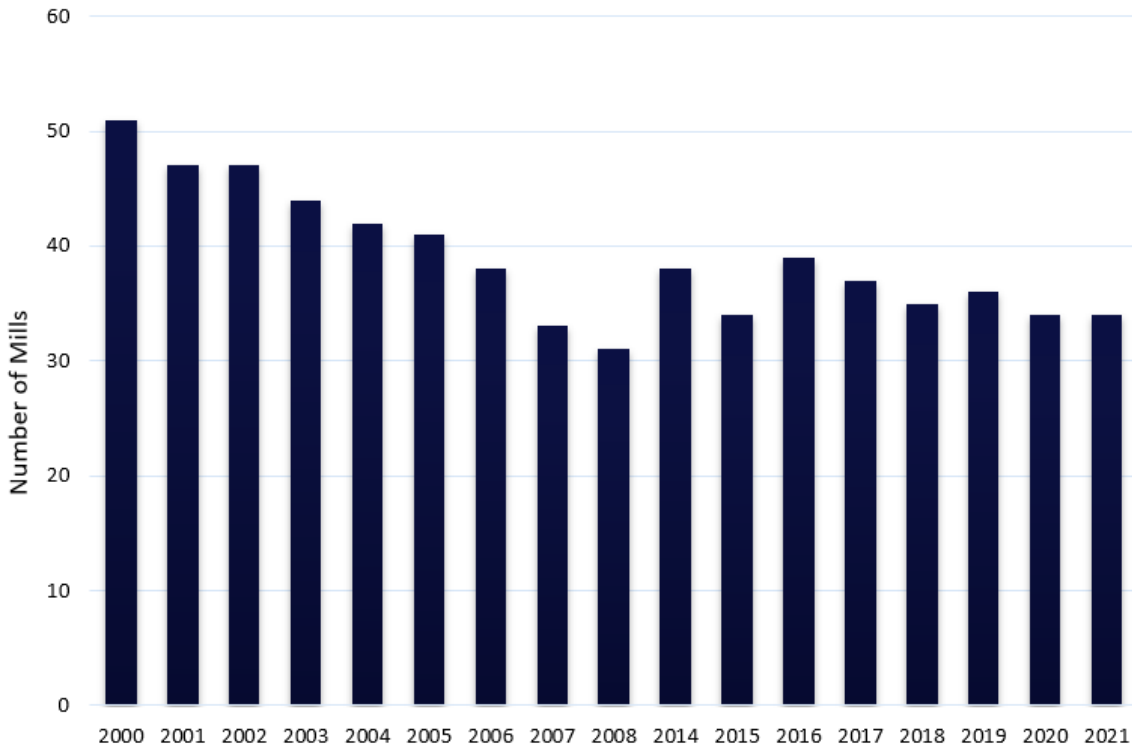


Figure 18: B.C. Shake and Shingle Mills –Capacity, Output, and Log Input

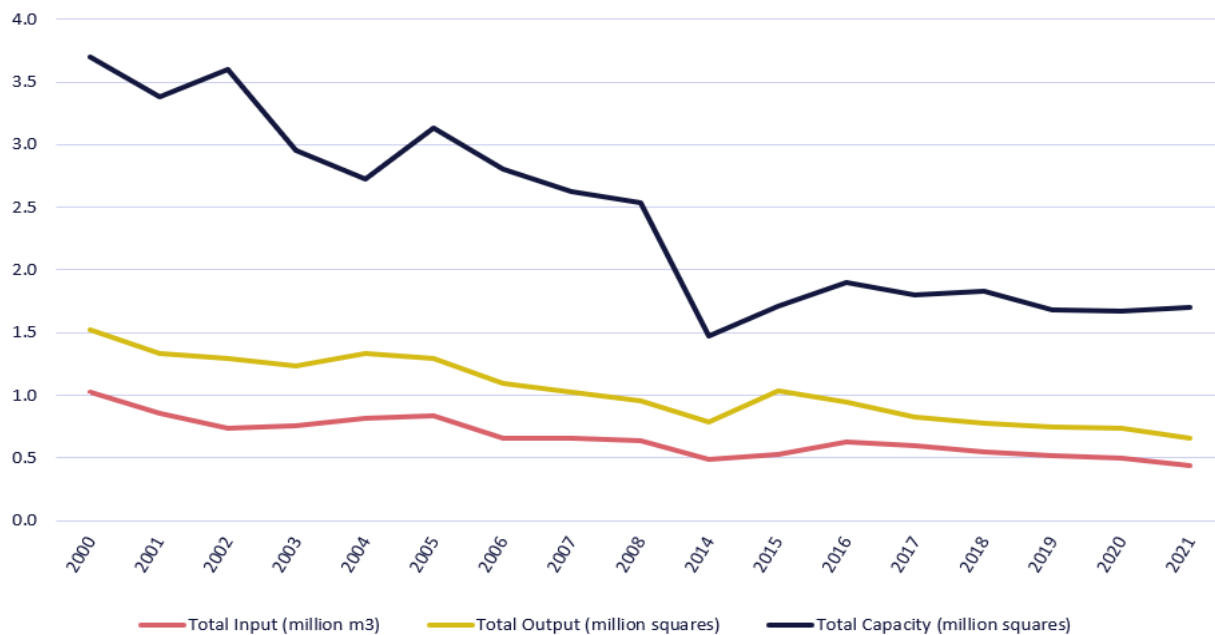
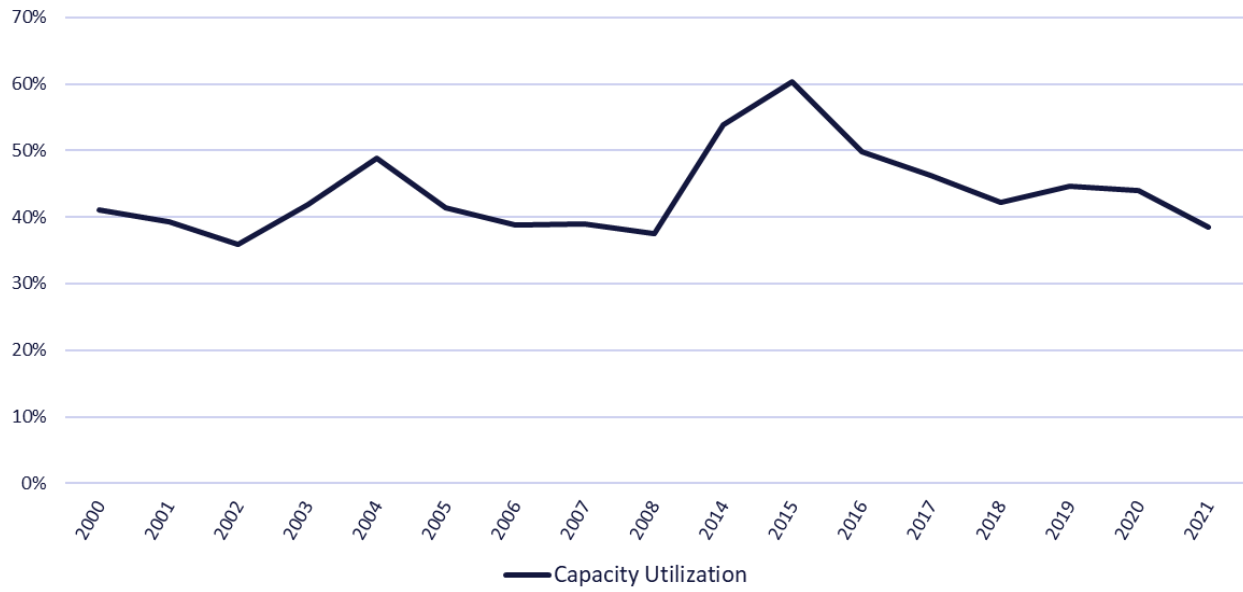




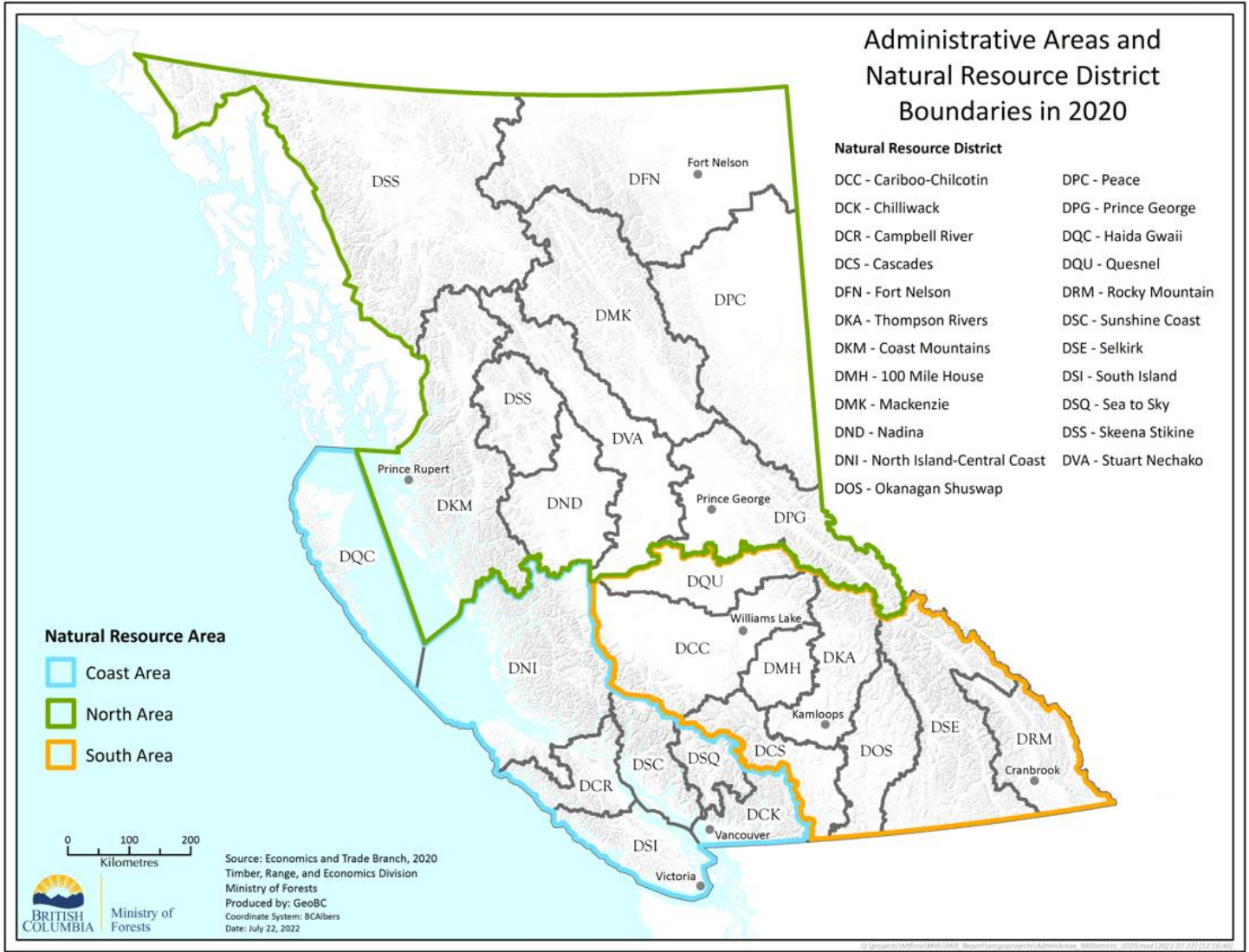
Figure 19: B.C. Shake and Shingle Mills –Capacity Utilization





Appendix

Figure 20: Administrative Areas and Natural Resource District Boundaries





Lumber Mills

Lumber mills are presented in two separate tables, one for those with an estimated annual capacity of at least 40 million board feet of lumber, and one for those with lower annual capacity.

The annual capacity reported in the following tables is estimated based on the same standard operating assumptions for each mill (i.e., number and length of shifts and days per year as described below). The actual mill production can be higher or lower than the estimated capacity if a mill runs on a different operating schedule than assumed here.

Therefore, while capacity provides guidance on mill output, it is not a measure of the actual production level of the mill. For more information, please contact Mill.Survey@gov.bc.ca.

Notes:

1. The estimated annual capacity is based on a standardized operation of 240 days per year, two 8-hour shifts per day. Actual mill operation may vary from this schedule.
2. Administrative areas and natural resource districts were applied (see Figure 25 for details).
3. The List of Lumber Mills is available as an Excel spreadsheet online at <https://www2.gov.bc.ca/gov/content/industry/forestry/competitive-forest-industry/forest-industry-economics/fibre-mill-information/major-timber-processing-facilities-survey>.



Table 6: Lumber Mills with an Annual Capacity of at Least 40 Million Board Feet, 2021

Mill Number	Company	Location of Mill	Administrative Area	Natural Resource District	Estimated Annual Capacity (million board feet)
498	Aspen Planers Ltd.	Merritt	South	Cascades	192
213	Babine Forest Products Limited (Hampton Lumber)	Burns Lake	North	Nadina	221
90	Canadian Forest Products Ltd.	Radium Hot Springs	South	Rocky Mountain	178
193	Canadian Forest Products Ltd.	Houston	North	Nadina	436
160	Canadian Forest Products Ltd.	Bear Lake	North	Prince George	282
82	Canadian Forest Products Ltd.	Elko	South	Rocky Mountain	216
166	Canadian Forest Products Ltd.	Prince George	North	Prince George	316
93	Canadian Forest Products Ltd.	Wynndel	South	Selkirk	67
140	Canadian Forest Products Ltd.	Engen	North	Vanderhoof	445
127	Canadian Forest Products Ltd.	Chetwynd	North	Peace	219
122	Canadian Forest Products Ltd.	Fort St John	North	Peace	288
150	Carrier Lumber Ltd.	Prince George	North	Prince George	276
129	Conifex Timber Inc.	Mackenzie	North	Mackenzie	168
377	Coulson Manufacturing Ltd (San Group)	Port Alberni	Coast	South Island	41
326	Delta Cedar Sawmill LP	Delta	Coast	Chilliwack	50
158	Dunkley Lumber Ltd.	Hixon	North	Prince George	552
66	Gilbert Smith Forest Product Ltd.	Barriere	South	Thompson Rivers	69
537	Goldwood Industries Ltd.	Richmond	Coast	Chilliwack	57
45	Gorman Borthers (Downie Timber Ltd.)	Revelstoke	South	Selkirk	110
14	Gorman Bros Lumber Ltd.	Westbank	South	Okanagan Shuswap	127
1005	Halo Sawmill Mfg LP	Pitt Meadows	Coast	Chilliwack	59
181	Hampton Lumber (Decker Lake Forest Products)	Burns Lake	North	Nadina	47
30	Interfor Corporation	Grand Forks	South	Selkirk	163
62	Interfor Corporation	Castlegar	South	Selkirk	203
70	Interfor Corporation	Adams Lake	South	Thompson Rivers	352
283	Interfor Corporation	Delta	Coast	Chilliwack	112
88	J. H. Huscroft Ltd.	Erickson	South	Selkirk	49
50	Kalesnikoff Lumber Co. Ltd.	Castlegar	South	Selkirk	120
184	Kitwanga Forest Products	Kitwanga	North	Skeena Stikine	42
1000	Ledcor Forest Products Partnership	Chilliwack	Coast	Chilliwack	71
144	Nechako Lumber Co.	Vanderhoof	North	Vanderhoof	240
618	North Enderby Timber Ltd.	Enderby	South	Okanagan Shuswap	61
626	Porcupine Wood Products Ltd.	Salmo	South	Selkirk	53
361	Riverside Forest Products	Surrey	Coast	Chilliwack	69
183	ROC Holdings Ltd.	Terrace	North	Coast Mountain	138
454	S & R Sawmills Ltd.	Surrey	Coast	Chilliwack	223
750	Sigurdson Forest Products Ltd.	Williams Lake	South	Cariboo Chilcotin	72
137	Sinclar Group (Apollo Forest Products Ltd.)	Fort St James	North	Fort St. James	125
149	Sinclar Group (Lakeland Mills Ltd.)	Prince George	North	Prince George	158
100	Teal-Jones Group (J.S. Jones)	Surrey	Coast	Chilliwack	155
539	Teal-Jones Group (Stag Timber Ltd.)	Surrey	Coast	Chilliwack	51



396	Terminal Forest Products Ltd.	Vancouver	Coast	Chilliwack	51
540	Terminal Forest Products Ltd.	Richmond	Coast	Chilliwack	245
20	Tolko Industries Ltd.	Lavington	South	Okanagan Shuswap	268
68	Tolko Industries Ltd.	Armstrong	South	Okanagan Shuswap	217
103	Tolko Industries Ltd. (Lakeview)	Williams Lake	South	Cariboo Chilcotin	240
107	Tolko Industries Ltd. (Soda Creek)	Williams Lake	South	Cariboo Chilcotin	187
31	Vaagen Fibre Canada	Midway	South	Selkirk	144
552	West Fraser Mills Ltd.	Chetwynd	North	Peace	268
532	West Fraser Mills Ltd.	LeJac	North	Vanderhoof	259
113	West Fraser Mills Ltd.	Quesnel	South	Quesnel	460
95	West Fraser Mills Ltd.	100 Mile House	South	100 Mile House	230
191	West Fraser Mills Ltd.	Smithers	North	Skeena Stikine	269
114	West Fraser Mills Ltd.	Williams Lake	South	Cariboo Chilcotin	157
376	Western Forest Products	Ladysmith	Coast	South Island	89
528	Western Forest Products	Port Alberni	Coast	South Island	134
442	Western Forest Products	Ladysmith	Coast	South Island	193
320	Western Forest Products	Cowichan Bay	Coast	South Island	131
393	Western Forest Products	Chemainus	Coast	South Island	65
546	Western Forest Products	Duke Point	Coast	South Island	104
29	Weyerhaeuser Company Ltd.	Princeton	South	Cascades	234



Table 7: Lumber Mills with an Annual Capacity of Less than 40 Million Board Feet, 2021

Mill Number	Company	Location of Mill	Administrative Area	Natural Resource District	Estimated Annual Capacity (million board feet)
9	A J Forest Products Ltd.	Brackendale	Coast	Sea to Sky	24.0
8	Andersen Pacific Forest Products Ltd	Ruskin	Coast	Chilliwack	24.5
643	Bear Lumber Ltd.	Cranbrook	South	Rocky Mountain	3.8
1095	Canadian Timber Frames	Golden	South	Selkirk	1.0
117	Continental Pole Ltd.	Pemberton	Coast	Sea to Sky	1.9
1051	COWICHAN LAKE TIMBER	Lake Cowichan	Coast	South Island	2.5
989	Deacoff Bros. Enterprises Ltd.	Kelowna	South	Okanagan Shuswap	0.8
1048	E Schuk contracting Ltd.	Tatla Lake	South	Cariboo Chilcotin	0.2
1056	Eaglecrest Enterprises Ltd.	Port Clements	Coast	Haida Gwaii	1.4
717	Edgegrain	Campbell River	Coast	Campbell River	1.2
301	Errington Cedar Products Ltd.	Errington	Coast	South Island	13.9
714	Franklin Forest Products Ltd.	Port Alberni	Coast	South Island	19.2
1004	Fu So Enterprises Ltd.	Surrey	Coast	Chilliwack	2.4
86	Galloway Lumber Co. Ltd.	Galloway	South	Rocky Mountain	26.4
32	Gibbs Custom Sawmill	McBride	North	Prince George	1.2
957	Gold Island Forest Products Ltd.	Slocan	South	Selkirk	16.8
567	Green D Forest Products Ltd.	Merville	Coast	Campbell River	0.5
1016	Greenslide Cattle Co Ltd	Revelstoke	South	Selkirk	1.0
5	Haida Gwaii Forest Products Joint Venture	Port Clements	Coast	Haida Gwaii	14.4
1006	Harrop Procter Forest Products	Nelson	South	Selkirk	1.1
990	Hyde Sawmill Ltd.	Sicamous	South	Okanagan Shuswap	20.3
1014	Jeff Palumbo Contracting	Golden	South	Selkirk	0.3
512	Jemico Enterprises Ltd.	Chemainus	Coast	South Island	12.0
47	Joe Kozek Sawmills Ltd.	Revelstoke	South	Selkirk	9.6
1085	L&Y Forest Products LTD	Duncan	Coast	South Island	0.7
1086	Lake Drive Lumber	Terrace	North	Coast Mountain	1.0
1007	Lake Drive Lumber	Terrace	North	Coast Mountain	0.7
702	Linde Bros Lumber Ltd.	Williams Lake	South	Cariboo Chilcotin	1.7
399	Lois Lumber Ltd	Powell River	Coast	Sunshine Coast	4.0
712	Long Hoh Enterprises Canada Ltd	Qualicum Beach	Coast	South Island	26.4
1067	Lower North Thompson Community Forest Society	Barriere	South	Thompson Rivers	1.0
1052	Ludwig Lumber Ltd.	Black Creek	Coast	Campbell River	1.4
197	McDonald Ranch & Lumber Ltd.	Grasmere	South	Rocky Mountain	6.7
974	Murray Kane Site 6LW	Clinton	South	100 Mile House	0.5
1076	North Pacific Timber Corporation	Queen Charlotte	Coast	Haida Gwaii	1.2
1010	Pacific Timber	Burns Lake	North	Nadina	19.2
917	Pacific Timber -Sheraton Sawmill	Burns Lake	North	Nadina	12.0



711	Port Hardy Merchandising Ltd.	Port Hardy	Coast	North Island - Central Coast	4.8
582	Quadra Island Forest Products Ltd.	Quadra Island	Coast	Campbell River	2.9
905	Rainforest Sawmill	Black Creek	Coast	Campbell River	0.7
199	RONA North Star Hardware and Building Supplies Ltd.	Athalmer	South	Rocky Mountain	2.4
271	Rouck Brothers Sawmill Ltd.	Lumby	South	Okanagan Shuswap	3.8
907	Saratoga Speedway Mills	Campbell River	Coast	Campbell River	0.7
480	Schapol Logging Ltd.	Enderby	South	Okanagan Shuswap	23.5
23	Shannon Lumber Ltd.	Chilliwack	Coast	Chilliwack	9.6
654	SpikeTop Cedar Ltd.	Port Hardy	Coast	North Island - Central Coast	0.5
24	Suncoast Industries Inc	Sechelt	Coast	Sunshine Coast	16.8
1023	Take to Heart Specialty Wood Products	Revelstoke	South	Selkirk	0.8
1054	Tanu Wood Products Enterprises	Skidegate	Coast	Haida Gwaii	1.4
96	Thomson Bros. Lumber Co. Ltd.	Courtenay	Coast	Campbell River	2.4
1092	Vertical West Timber Ltd	Salmon Arm	South	Okanagan Shuswap	0.0
979	Woodco Industries Ltd	Barriere	South	Thompson Rivers	19.2



Pulp and Paper Mills

Pulp and paper mills are listed in this section. For integrated mills, pulp capacity includes pulp that is used internally to produce paper, and pulp that is shipped from the mill site as market pulp.

The annual capacity reported in these tables is estimated based on the same standard operating assumptions for each mill (number and length of shifts and days per year as described below). Actual mill production can be higher or lower than the estimated capacity if a mill runs on a different operating schedule than assumed here. Therefore, while capacity provides guidance on mill output, it is not a measure of the actual production level of the mill. For more information, please contact Mill.Survey@gov.bc.ca.

Notes:

1. Estimated annual capacity is based on a standardized operation of 345 operating days per year, 24 hours per day. Actual operations may vary from this schedule.
2. Administrative areas and natural resource districts were applied (see Figure 25 for details).
3. The List of Pulp and Paper Mills is available as an Excel spreadsheet online at <https://www2.gov.bc.ca/gov/content/industry/forestry/competitive-forest-industry/forest-industry-economics/fibre-mill-information/major-timber-processing-facilities-survey>.


Table 82: Pulp and Paper Mills, 2021

Mill Number	Company	Location of Mill	Product	Administrative Area	Natural Resource District	Estimated Annual Capacity (thousand tonnes)
960	Canadian Forest Products Ltd. (Intercontinental Pulp)	Prince George	PLP	North	Prince George	313
503	Canadian Forest Products Ltd. (Northwood Pulp Mill)	Prince George	PLP	North	Prince George	496
500	Canadian Forest Products Ltd. (Prince George Pulp and Paper)	Prince George	PLP	North	Prince George	313
335	Canadian Forest Products Ltd. (Taylor Pulp Mill)	Taylor	PLP	North	Peace	191
2	Domtar	Kamloops	PLP	South	Thompson Rivers	375
488	Harmac Pacific (Nanaimo Forest Products)	Cedar	PLP	Coast	South Island	354
501	Mercer (Mercer Celgar Limited Partnership)	Castlegar	PLP	South	Selkirk	436
487	Paper Excellence Group	Port Alberni	PLP	Coast	South Island	164
483	Paper Excellence Group	Crofton	PLP	Coast	South Island	681
486	Paper Excellence Group	Powell River	PLP	Coast	Sunshine Coast	183
484	Paper Excellence Group (Howe Sound)	Port Mellon	PLP	Coast	Sunshine Coast	391
1	Paper Excellence Group (Skookumchuk Pulp Mill)	Skookumchuk	PLP	South	Rocky Mountain	252
497	West Fraser and Mercer (Cariboo Pulp & Paper)	Quesnel	PLP	South	Quesnel	321
553	West Fraser Mills Ltd. (Quesnel River Pulp Company)	Quesnel	PLP	South	Quesnel	356
500	Canadian Forest Products Ltd. (Prince George Pulp and Paper)	Prince George	PPR	North	Prince George	156
491	Kruger Products LP	New Westminster	PPR	Coast	Chilliwack	63
486	Paper Excellence Group	Powell River	PPR	Coast	Sunshine Coast	192
483	Paper Excellence Group	Crofton	PPR	Coast	South Island	306
487	Paper Excellence Group	Port Alberni	PPR	Coast	South Island	249



Veneer, Plywood, OSB, and Other Panel Mills

(Listed Alphabetically by Product)

Mills producing veneer, plywood, OSB and other types of panels are listed in this section. For mills that produce both market veneer and plywood, veneer capacity includes market veneer and the veneer that is used within the mill to manufacture plywood. Panel mills that use wood residuals to produce panels or that do not have log-processing capability are also listed in this report.

The annual capacity reported in these tables is estimated based on the same standard operating assumptions for each mill (number and length of shifts and days per year as described below). Actual mill production can be higher or lower than the estimated capacity if a mill runs on a different operating schedule than assumed here. Therefore, while capacity provides guidance on mill output, it is not a measure of the actual production level of the mill. For more information, please contact Mill.Survey@gov.bc.ca.

Notes:

1. The estimated annual capacity of veneer mills and plywood mills is based on a standardized operation of 240 days per year, two 8-hour shifts per day. For OSB and other panel mills, the estimated annual capacity is based on a standardized operation of 345 days per year, three 8-hour shifts per day. Actual operations may vary from these schedules.
2. Administrative areas and natural resource districts were applied (see Figure 25 for details).
3. The List of Veneer, Plywood, OSB and Panel Mills is available as an Excel spreadsheet online at <https://www2.gov.bc.ca/gov/content/industry/forestry/competitive-forest-industry/forest-industry-economics/fibre-mill-information/major-timber-processing-facilities-survey>.



Table 9: Veneer, Plywood, OSB, and Panel Mills, 2021

Mill Number	Company	Location of Mill	Product	Administrative Area	Natural Resource District	Estimated Annual Capacity (million sq. ft, 3/8" basis)
942	Peace Valley OSB	Fort St John	OSB	North	Peace	828
650	Louisiana Pacific Canada Ltd.	Dawson Creek	OSB	North	Peace	311
394	Tolko Industries Ltd.	Heffley Creek	PLY	South	Thompson Rivers	184
84	Pacific Woodtec	Golden	PLY	South	Selkirk	116
112	West Fraser Mills Ltd.	Quesnel	PLY	South	Quesnel	220
1042	Thompson River Veneer Products Ltd.	Kamloops	PLY	South	Thompson Rivers	108
105	West Fraser Mills Ltd.	Williams Lake	PLY	South	Cariboo Chilcotin	219
109	Aspen Planers Ltd.	Savona	PLY	South	Thompson Rivers	121
478	Richmond Plywood Corporation Limited	Richmond	PLY	Coast	Chilliwack	159
68	Tolko Industries Ltd.	Armstrong	PLY	South	Okanagan Shuswap	274
12	Gorman Brothers (Canoe Forest Products Ltd.)	Canoe	PLY	South	Okanagan Shuswap	139
113	West Fraser Mills Ltd.	Quesnel	PNL	South	Quesnel	155
650	Louisiana Pacific Canada Ltd.	Dawson Creek	SID	North	Peace	269
1044	Harwood Lumber Ltd.	Maple Ridge	VNR	Coast	Chilliwack	1
115	Aspen Planers Ltd.	Lillooet	VNR	South	Cascades	134
12	Gorman Brothers (Canoe Forest Products Ltd.)	Canoe	VNR	South	Okanagan Shuswap	146
508	CIPA Lumber Co. Ltd.	Annacis Island	VNR	Coast	Chilliwack	216
68	Tolko Industries Ltd.	Armstrong	VNR	South	Okanagan Shuswap	147
34	B C Veneer Products Ltd	Surrey	VNR	Coast	Chilliwack	2
478	Richmond Plywood Corporation Limited	Richmond	VNR	Coast	Chilliwack	226
394	Tolko Industries Ltd.	Heffley Creek	VNR	South	Thompson Rivers	180
35	Tolko Industries Ltd.	Lumby	VNR	South	Okanagan Shuswap	187
84	Pacific Woodtec	Golden	VNR	South	Selkirk	148
51	Atco Wood Products	Fruitvale	VNR	South	Selkirk	121
244	Coastland Wood Industries Ltd.	Nanaimo	VNR	Coast	South Island	213
105	West Fraser Mills Ltd.	Williams Lake	VNR	South	Cariboo Chilcotin	137
112	West Fraser Mills Ltd.	Quesnel	VNR	South	Quesnel	156

Notes:

1. Small mills using less than 25,000 cubic metres of logs per year were also included in the above list.
2. The Louisiana Pacific Canada Ltd. OSB mill (#650) changed its production to make both OSB and siding products in 2021.



Chip Mills

Only mills that produce wood chips as a primary product are listed in this section.

The annual capacity reported in these tables is estimated based on the same standard operating assumptions for each mill (number and length of shifts and days per year as described below). Actual mill production can be higher or lower than the estimated capacity if a mill runs on a different operating schedule than assumed here. Therefore, while capacity provides guidance on mill output, it is not a measure of the actual production level of the mill. For more information, please contact Mill.Survey@gov.bc.ca.

Notes:

1. The estimated annual capacity is based on a standardized operation of 240 days per year, two 8-hour shifts per day. Actual operations may vary from this schedule.
2. Administrative areas and natural resource districts were applied (see Figure 25 for details).
3. The List of Chip Mills is available as an Excel spreadsheet online at <https://www2.gov.bc.ca/gov/content/industry/forestry/competitive-forest-industry/forest-industry-economics/fibre-mill-information/major-timber-processing-facilities-survey>.


Table 10: Chip Mills, 2021

Mill Number	Company	Location of Mill	Administrative Area	Natural Resource District	Estimated Annual Capacity (Thousand BDUs)
10	B.C. Custom Timber Products Ltd.	Vanderhoof	North	Vanderhoof	232
1002	B.C. EcoChips Ltd	Okanagan Falls	South	Okanagan Shuswap	96
446	Campbell River Fibre Ltd.	Campbell River	Coast	Campbell River	90
166	Canadian Forest Products Ltd.	Prince George	North	Prince George	552
1	Canadian Forest Products Ltd.	Skookumchuk	South	Rocky Mountain	113
924	Chips Ahoy Fibre Supply Ltd.	Mission	Coast	Chilliwack	131
345	DCT Chambers Trucking Ltd.	Chemanius	Coast	South Island	327
356	East Fraser Fibre Co Ltd.	Mackenzie	North	Mackenzie	234
1013	Karlite Manufacturing Ltd.	Cowichan Bay	Coast	South Island	182
1000	Ledcor Forest Products Partnership	Chilliwack	Coast	Chilliwack	109
1050	North Island Chipping Ltd.	Port McNeill	Coast	North Island - Central Coast	75
937	Pacific Fibre	Port Mellon	Coast	Sunshine Coast	120
952	Rivercity Fibre Ltd	Kamloops	South	Thompson Rivers	553
183	ROC Holdings Ltd.	Terrace	North	Coast Mountain	125
18	Terminal Forest Products Ltd.	Langdale	Coast	Sunshine Coast	34
394	Tolko Industries Ltd.	Heffley Creek	South	Thompson Rivers	96
68	Tolko Industries Ltd.	Armstrong	South	Okanagan Shuswap	36
1001	Valiant Log Sort Ltd.	Port Coquitlam	Coast	Chilliwack	96
409	West Coast Chip Mill	Vancouver	Coast	Chilliwack	262
113	West Fraser Mills Ltd.	Quesnel	South	Quesnel	190



Pellet Mills

Mills producing wood pellets for bioenergy are listed in this section.

The annual capacity reported in these tables is estimated based on the same standard operating assumptions for each mill (number and length of shifts and days per year as described below). Actual mill production can be higher or lower than the estimated capacity if a mill runs on a different operating schedule than assumed here. Therefore, while capacity provides guidance on mill output, it is not a measure of the actual production level of the mill. For more information, please contact Mill.Survey@gov.bc.ca.

Notes:

1. The estimated annual capacity of pellet mills is based on a standardized operation of 345 days per year, three 8-hour shifts per day. Actual operations may vary from these schedules.
2. Administrative areas and natural resource districts were applied (see Figure 25 for details).
3. The List of Pellet Mills is available as an Excel spreadsheet online at <https://www2.gov.bc.ca/gov/content/industry/forestry/competitive-forest-industry/forest-industry-economics/fibre-mill-information/major-timber-processing-facilities-survey>.


Table 11: Pellet Mills, 2021

Mill Number	Company	Location of Mill	Administrative Area	Natural Resource District	Estimated Annual Capacity (thousand tonnes)
127	Canadian Forest Products Ltd. and Pacific BioEnergy	Chetwynd	North	Peace	121
122	Canadian Forest Products Ltd. and Pacific BioEnergy	Fort St John	North	Peace	83
929	Drax	Armstrong	South	Okanagan Shuswap	52
980	Drax	Burns Lake	North	Nadina	345
976	Drax	Strathnaver	North	Prince George	193
948	Drax	Williams Lake	South	Cariboo Chilcotin	187
933	Drax (Princeton Standard Pellet Corporation)	Princeton	South	Cascades	95
947	Drax and Canfor (Houston Pellet Limited Partnership)	Houston	North	Nadina	114
1049	Drax and Tolko (Lavington Pellet Limited Partnership)	Lavington	South	Okanagan Shuswap	266
1074	Drax and West Fraser (Smithers Pellet Limited Partnership)	Smithers	North	Skeena Stikine	106
930	Pacific BioEnergy	Prince George	North	Prince George	285
932	Sinclar Group (Premium Pellet Ltd.)	Vanderhoof	North	Vanderhoof	248
183	Skeena Bioenergy Pellet Mill	Terrace	North	Coast Mountain	84
995	Vanderhoof Specialty Wood Products	Vanderhoof	North	Vanderhoof	33



Pole, Utility Pole, and Post Mills

Mills producing poles, utility poles, and posts are listed in this section.

The annual capacity reported in these tables is estimated based on the same standard operating assumptions for each mill (number and length of shifts and days per year as described below). Actual mill production can be higher or lower than the estimated capacity if a mill runs on a different operating schedule than assumed here. Thus, while capacity provides guidance on mill output, it is not a measure of the actual production level of the mill. For more information, please contact Mill.Survey@gov.bc.ca.

Notes:

1. The estimated annual capacity is based on a standardized operation of 240 days per year, one 8-hour shift per day, although actual mill operations may vary from this schedule.
2. Administrative areas and natural resource districts were applied (see Figure 25 for details).
3. The List of Pole and Post Mills is available as an Excel spreadsheet online at <https://www2.gov.bc.ca/gov/content/industry/forestry/competitive-forest-industry/forest-industry-economics/fibre-mill-information/major-timber-processing-facilities-survey>.


Table 12: Post, Utility Pole, and Pole Mills, 2021

Mill Number	Company	Location of Mill	Product	Administrative Area	Natural Resource District	Estimated Annual Capacity (thousand pieces)
498	Aspen Planers Ltd.	Merritt	PLE	South	Cascades	N/A
250	Nicola Post and Rail Ltd.	Merritt	PLE	South	Cascades	120
677	Pacific Inland Pole & Piling Co. Ltd.	Nakusp	PLE	South	Selkirk	N/A
498	Aspen Planers Ltd.	Merritt	PST	South	Cascades	480
390	Box Lake Lumber Products Ltd	Nakusp	PST	South	Selkirk	480
997	Cedar 3 Products	McBride	PST	North	Prince George	480
250	Nicola Post and Rail Ltd.	Merritt	PST	South	Cascades	720
739	Panhandle Forest Products	Lumberton	PST	South	Rocky Mountain	360
232	Princeton Wood Preservers Ltd	Princeton	PST	South	Cascades	960
188	Bell Lumber & Pole ULC canada	Rossland	UTI	South	Selkirk	6
659	Brisco Wood Preservers Ltd.	Brisco	UTI	South	Rocky Mountain	24
556	Chinook Forest Products Ltd.	Courtenay	UTI	Coast	Campbell River	0.01
117	Continental Pole Ltd.	Pemberton	UTI	Coast	Sea to Sky	13
40	Gorman Bros Lumber Ltd.	Lumby	UTI	South	Okanagan Shuswap	23
181	Hampton Lumber	Burns Lake	UTI	North	Nadina	7
999	Otter Point Timber Ltd.	Ladysmith	UTI	Coast	South Island	26
48	Stella Jones Inc.	Revelstoke	UTI	South	Selkirk	48
637	Stella-Jones Inc.	Prince George	UTI	North	Prince George	24
648	Stella-Jones Inc.	Galloway	UTI	South	Rocky Mountain	29
222	Stella-Jones Inc.	Haney	UTI	Coast	Chilliwack	36



Shake and Shingle Mills

Mills producing shake and shingles are listed in this section.

The annual capacity reported in these tables is estimated based on the same standard operating assumptions for each mill (number and length of shifts and days per year as described below). Actual mill production can be higher or lower than estimated capacity if a mill runs on a different operating schedule than assumed here. Thus, while capacity provides guidance on mill output, it is not a measure of the actual production level of the mill. For more information, please contact Mill.Survey@gov.bc.ca.

Notes:

1. The measurement unit is thousand roofing squares (thousand squares). A roofing square is approximately 100 square feet.
2. Estimated annual capacity is based on a standardized operation of 240 days per year, two 8-hour shifts per day. Actual mill operations may vary from this schedule.
3. Administrative areas and natural resource districts were applied (see Figure 25 for details).
4. The List of Shake and Shingle Mills is available as an Excel spreadsheet online at <https://www2.gov.bc.ca/gov/content/industry/forestry/competitive-forest-industry/forest-industry-economics/fibre-mill-information/major-timber-processing-facilities-survey>.


Table 13: Shake and Shingle Mills, 2021

Mill Number	Company	Location of Mill	Administrative Areas	Natural Resource District	Estimated Annual Capacity (thousand squares)
1026	A.K. Cedar Products Ltd.	Abbotsford	Coast	Chilliwack	3.8
688	Best Quality Cedar Products Ltd	Maple Ridge	Coast	Chilliwack	160.8
706	Bill Little Contracting Ltd	Campbell River	Coast	Campbell River	2.9
449	Campbell River Shake and Shingle Co Ltd	Campbell River	Coast	Campbell River	22.8
1028	Cape Scott Cedar Products Ltd.	Holberg	Coast	North Island - Central Coast	22.1
1029	Cedar Valley Holdings Ltd	Valemount	North	Prince George	7.2
1080	Cedar Valley Specialty	Valemount	North	Prince George	4.8
385	Clearbrook Shake & Shingle Ltd.	Abbotsford	Coast	Chilliwack	3.4
1033	Coleman Road Shingle Ltd (Pacific Cedar)	Port Alberni	Coast	South Island	7.7
315	Comox Valley Shakes (2019) Ltd.	Campbell River	Coast	Campbell River	38.4
638	Confederate Shake & Shingle Ltd.	Youbou	Coast	South Island	19.2
69	Copper Mountain Cedar Products	Terrace	North	Coast Mountain	2.9
1062	G & R Cedar (2009) Ltd.	Chilliwack	Coast	Chilliwack	38.4
587	G & R Cedar Ltd.	Matsqui	Coast	Chilliwack	62.4
399	Goat Lake Group of Companies (Goat Lake Forest Products)	Powell River	Coast	Sunshine Coast	38.4
1030	Golden Ears Shingle Ltd.	Mission	Coast	Chilliwack	7.2
72	Imperial Shake Co Ltd	Maple Ridge	Coast	Chilliwack	144.0
1071	Island Cedar Products	Matsqui	Coast	Chilliwack	78.7
321	J & D Shake and Cedar Mill Ltd.	Duncan	Coast	South Island	72.0
583	Madewell Cedar Inc.	Mission	Coast	Chilliwack	103.2
1039	Maibec Stave Lake	Dewdney	Coast	Chilliwack	78.2
612	Mission Shake and Shingle (Silver Creek Premium Products)	Mission	Coast	Chilliwack	225.6
1034	Pacific Chalet Ltd.	Powell River	Coast	Sunshine Coast	1.4
1009	Pendragon-Goldwood Industries Ltd	Gold River	Coast	Campbell River	38.4
460	Port McNeill Shake & Shingles (2007) Ltd.	Port McNeill	Coast	North Island - Central Coast	16.8
266	Premium Cedar Products Ltd.	Ruskin	Coast	Chilliwack	102.0
1036	Riverside Shingle Products	Errington	Coast	South Island	16.8
455	S & W Forest Products	Ruskin	Coast	Chilliwack	115.2
591	Serpentine Cedar Ltd.	Fort Langley	Coast	Chilliwack	9.6
1061	Star Lumber Canada Ltd.	Mission	Coast	Chilliwack	65.8
902	Taylor Contracting Ltd.	Zeballos	Coast	Campbell River	11.5
585	Teal Cedar Products (1977) Ltd.	Revelstoke	South	Selkirk	6.7
691	W. Boyes Shake and Shingle Ltd.	150 Mile House	South	Cariboo Chilcotin	14.4
464	Waldun Forest Products Ltd.	Ruskin	Coast	Chilliwack	160.8



Log Home Mills

Mills producing log homes are listed in this section. No capacity information is collected through the Mill List survey.

Notes:

1. Administrative areas and natural resource districts were applied (see Figure 25 for details).
2. The List of Log Home Mills is available as an Excel spreadsheet online at <https://www2.gov.bc.ca/gov/content/industry/forestry/competitive-forest-industry/forest-industry-economics/fibre-mill-information/major-timber-processing-facilities-survey>.



Table 34: Log Home Mills, 2021

Mill Number	Company	Location of Mill	Administrative Areas	Natural Resource District
190	Artisan Log and Timber Homes	Ruskin	Coast	Chilliwack
38	Baywest Manufacturing Inc.	Tappen	South	Okanagan Shuswap
697	Calija Log & Timber Homes Ltd.	93 Mile	South	100 Mile House
694	Canada's Log People Inc.	100 Mile House	South	100 Mile House
522	Chinook Log Homes Ltd.	Bear Flats, Montney	North	Peace
733	DBD LOG HOMES	Lone Butte	South	100 Mile House
46	Hamill Creek Timber Homes (2010) Ltd	Meadow Creek	South	Selkirk
216	Lake Country Log Homes (2009) Ltd.	Malakwa	South	Okanagan Shuswap
218	Maurer Construction Ltd.	Penticton	South	Okanagan Shuswap
458	Moore Log and Timber Homes	Abbotsford	Coast	Chilliwack
230	Nicola LogWorks Limited	Merritt	South	Cascades
474	Pioneer Log Homes of B.C.	Williams Lake	South	Cariboo Chilcotin
57	Roundwood Log homes	Prince George	North	Prince George
693	Sitka Log Homes Inc.	100 Mile House	South	100 Mile House
58	Sperlich Log Construction Inc	Enderby	South	Okanagan Shuswap
1022	Stonehouse Woodworks	Golden	South	Selkirk
602	T.L. Timber Ltd.	Cawston	South	Okanagan Shuswap
59	Tall Timber Log Builders	Popkum	Coast	Chilliwack
63	West Coast Log and Timber Homes	Gibsons	Coast	Sunshine Coast