

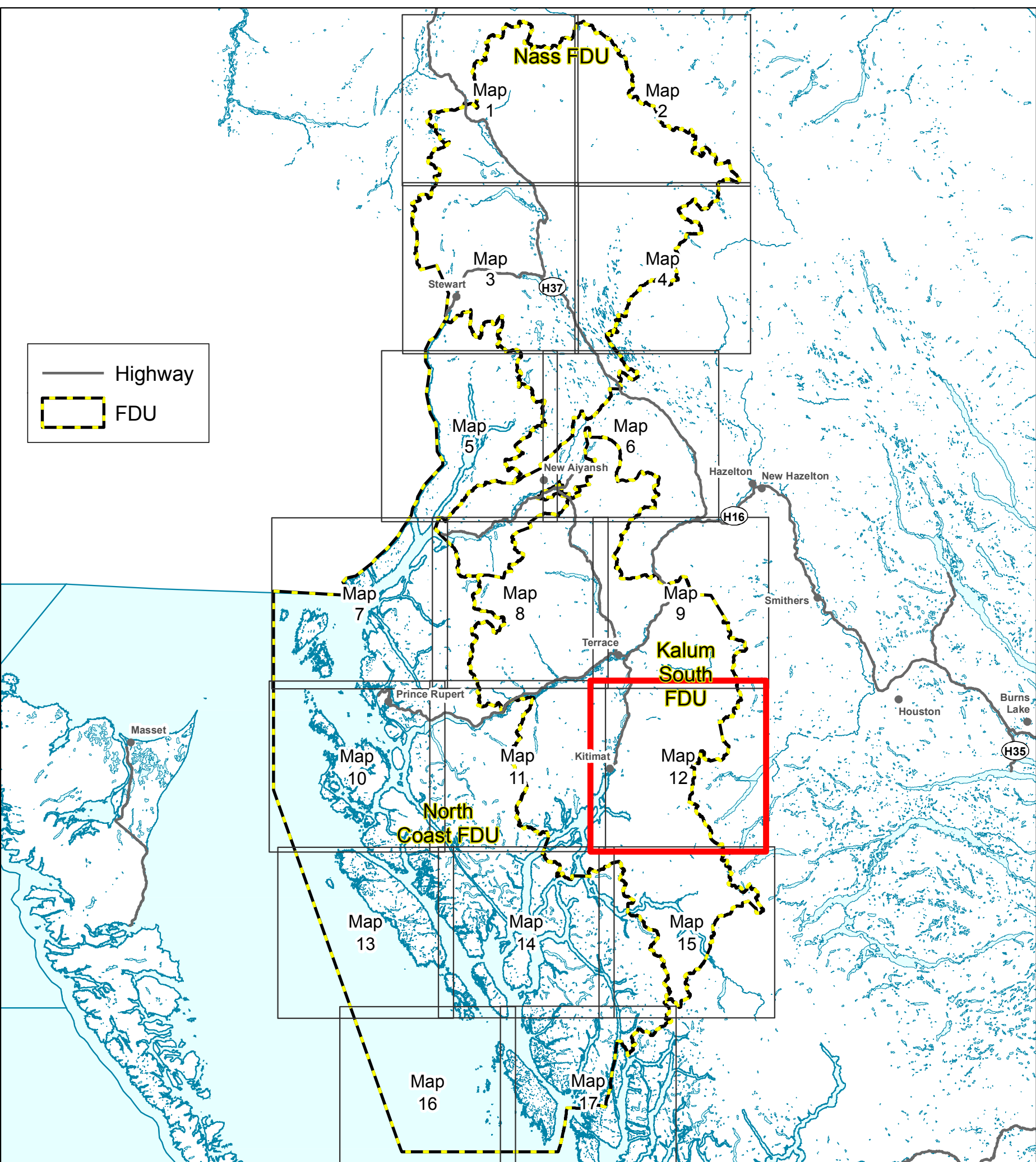


**BCTS**  
BC Timber Sales

# BC TIMBER SALES (BCTS) SKEENA BUSINESS AREA (TSK)

## Coast Mountains Natural Resource District Forest Stewardship Plan 2023-2028 #938

Date Produced: 2024-01-10  
Map produced by: BCTS Skeena  
User Name: TREFRIES  
Projection: Albers; Datum: NAD 83  
MXD: FSP2M\_v65\_44x34\_Dec2023  
Map 12 of 17



<p><b>Recreation &amp; Urban</b></p> <ul style="list-style-type: none"> <li>City</li> <li>Viewpoints</li> <li>Recreation Site</li> <li>Recreation Trail</li> <li>Recreation Area</li> </ul> <p><b>Access Management</b></p> <ul style="list-style-type: none"> <li>Highways Network</li> <li>BCTS Permitted Roads</li> <li>BCTS FSRs</li> </ul> <p><b>Waterbodies &amp; Streams</b></p> <ul style="list-style-type: none"> <li>Stream</li> <li>Lakes</li> <li>Class L1 Lake</li> <li>River</li> <li>Ocean</li> </ul> <p><b>Harvesting Information</b></p> <ul style="list-style-type: none"> <li>TSL Issued</li> <li>Declared</li> <li>BC Timber Sale Areas</li> </ul>	<p><b>Land Management</b></p> <ul style="list-style-type: none"> <li>Kalum South FDU</li> <li>Nass FDU</li> <li>North Coast FDU</li> <li>Research plots - Active</li> <li>Research plots - Inactive</li> <li>Visual Quality Objective</li> <li>Scenic Area</li> <li>OGMA</li> <li>TFL</li> <li>Landscape Unit</li> <li>Timber Supply Areas (BCGW)</li> </ul> <p><b>Wildlife</b></p> <ul style="list-style-type: none"> <li>Wildlife Habitat Area</li> <li>WHA Common Species Name</li> <li>Coastal Tailed Frog WHA</li> <li>Grizzly Bear WHA</li> <li>Data sensitive WHA</li> <li>Marbled Murrelet WHA</li> <li>Northern Caribou WHA</li> </ul> <p><b>UWR Species</b></p> <ul style="list-style-type: none"> <li>Ovda UWR</li> <li>M-ORAM UWR</li> <li>M-LAL UWR</li> <li>Wildlife Migration Corridor</li> <li>Nelson and Willoughby Creek - Flat and White River Area</li> <li>Nass Moose Winter Survey Area</li> </ul>	<p><b>Community Watershed</b></p> <ul style="list-style-type: none"> <li>Fee Simple - No Harvest</li> <li>Indian Reserve</li> <li>Woodlot</li> <li>Community Forest</li> <li>Private Land</li> <li>Ecological Reserve</li> <li>Protected Area</li> <li>Provincial Park</li> <li>Biodiversity, Mining and Tourism Area</li> </ul>	<p><b>Great Bear Rainforest Order</b></p> <p>Great Bear Rainforest Order Resource Management Legal Layers</p> <ul style="list-style-type: none"> <li>Cedar Stewardship Area</li> <li>Grizzly Bear Habitat</li> <li>Kermode Stewardship Area</li> <li>Important Fisheries Watershed</li> <li>Klinaklini River Reserve Zone</li> <li>Viner Creek Reserve Zone</li> <li>Order Sub-area</li> </ul> <p><b>Nass South SRMP LUOR Order</b></p> <p>Nass South Resource Management Legal Layers</p> <ul style="list-style-type: none"> <li>Ecosystem Network</li> <li>Equivalent Clearcut Area Threshold Watersheds</li> <li>Special Habitats for General Wildlife</li> <li>Water Management Units</li> <li>Gilanyow Treaty Settlement Lands Offer 2002 - Nass South SRMP - Non Legal</li> <li>Nisga'a Lands</li> <li>Nass Area</li> <li>Nass Wildlife Area</li> </ul>	<p><b>Kalum Sustainable Resource Management Plan</b></p> <ul style="list-style-type: none"> <li>Kalum Sustainable Resource Management Plan</li> <li>Botanical Forest Products</li> <li>Conservation Lands</li> <li>Ecosystem Network</li> <li>Grizzly Bear Identified Watersheds</li> <li>Skeena Islands Rare Ecosystems</li> <li>Special Habitats for General Wildlife</li> <li>Undeveloped Watersheds</li> </ul> <p><b>Area Specific Management</b></p> <ul style="list-style-type: none"> <li>Area visible from Sue Channel/Hawkesbury Island Protected Area</li> <li>Lakelse River SRMZ - Subzone 1</li> <li>Lakelse River SRMZ - Subzone 2</li> <li>Milgit Valley</li> <li>Upper Kitsumkalum SRMZ</li> </ul> <p><b>Wildlife Connectivity Corridors</b></p> <ul style="list-style-type: none"> <li>Kiteen-Cedar Full Retention</li> <li>Kiteen-Cedar Partial Retention</li> <li>Williams and Thomas/Clore</li> </ul>
--	--	--	---	--

