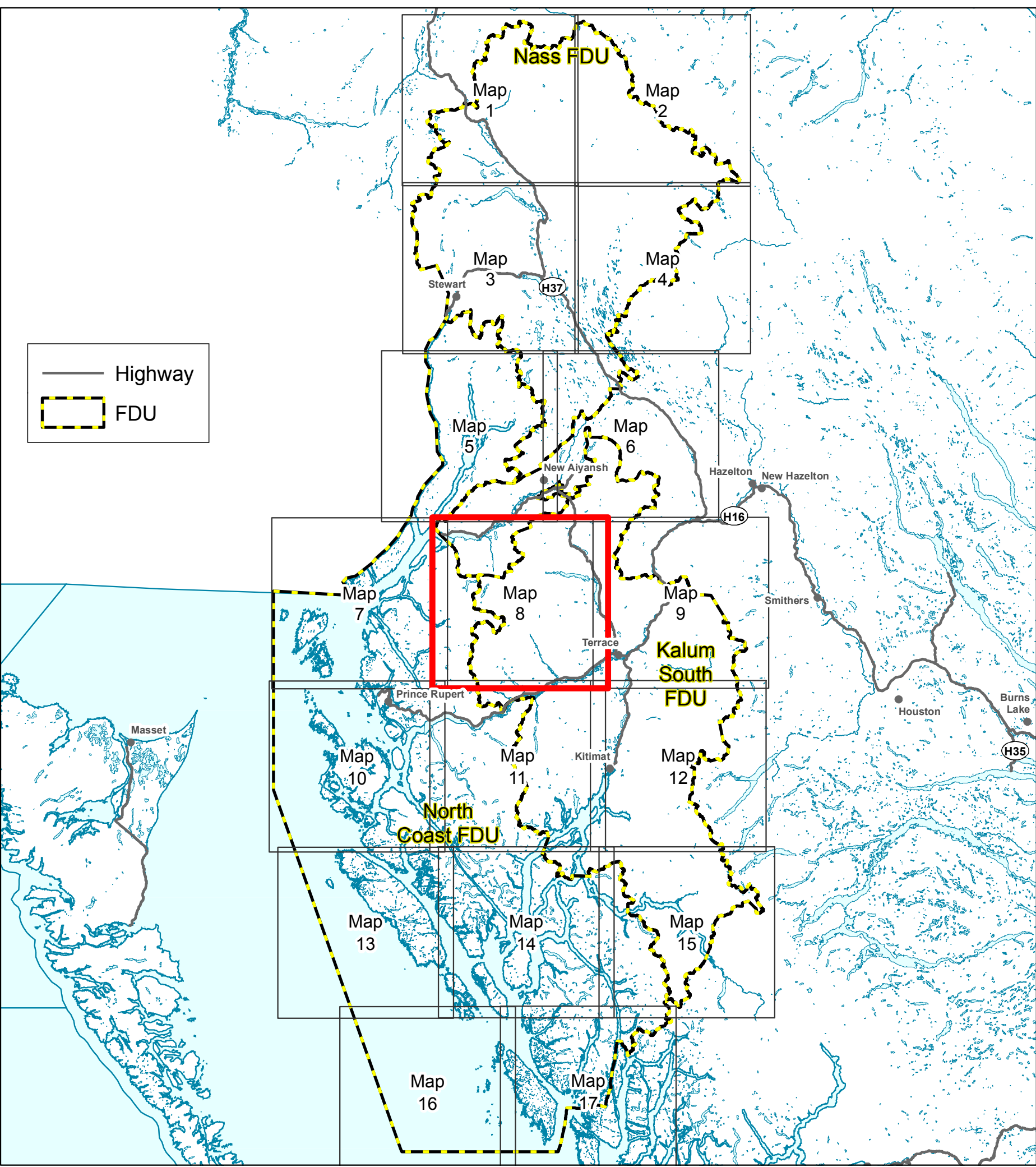




# BC TIMBER SALES (BCTS) SKEENA BUSINESS AREA (TSK)

## Coast Mountains Natural Resource District Forest Stewardship Plan 2023-2028 #938

Date Produced: 2024-01-10  
Map produced by: BCTS Skeena  
User Name: TREFRIES  
Projection: Albers; Datum: NAD 83  
MXD: FSP2M\_v65\_44x34\_Dec2023  
Map 8 of 17



<b>Recreation &amp; Urban</b> <ul style="list-style-type: none"><li>City</li><li>Viewpoints</li><li>Recreation Site</li><li>Recreation Trail</li><li>Recreation Area</li></ul>	<b>Land Management</b> <ul style="list-style-type: none"><li>Kalum South FDU</li><li>Nass FDU</li><li>North Coast FDU</li><li>Research plots - Active</li><li>Visual Quality Objective</li><li>Scenic Area</li><li>OGMA</li><li>TFL</li><li>Landscape Unit</li><li>Timber Supply Areas (BCGW)</li></ul>	<b>Community Watershed</b> <ul style="list-style-type: none"><li>Fee Simple - No Harvest</li><li>Indian Reserve</li><li>Woodlot</li><li>Community Forest</li><li>Private Land</li><li>Ecological Reserve</li><li>Protected Area</li><li>Provincial Park</li><li>Biodiversity, Mining and Tourism Area</li></ul>	<b>Great Bear Rainforest Order</b> <ul style="list-style-type: none"><li>Cedar Stewardship Area</li><li>Grizzly Bear Habitat</li><li>Kermode Stewardship Area</li><li>Important Fisheries Watershed</li><li>Klinakini River Reserve Zone</li><li>Viner Creek Reserve Zone</li><li>Order Sub-area</li></ul>	<b>Kalum Sustainable Resource Management Plan</b> <ul style="list-style-type: none"><li>Kalum Sustainable Resource Management Plan</li><li>Botanical Forest Products</li><li>Conservation Lands</li><li>Ecosystem Network</li><li>Grizzly Bear Identified Watersheds</li><li>Skeena Islands Rare Ecosystems</li><li>Special Habitats for General Wildlife</li><li>Undeveloped Watersheds</li></ul>
<b>Access Management</b> <ul style="list-style-type: none"><li>Highways Network</li><li>BCTS Permitted Roads</li><li>BCTS FSRs</li></ul>	<b>Waterbodies &amp; Streams</b> <ul style="list-style-type: none"><li>Stream</li><li>Lakes</li><li>Class L1 Lake</li><li>River</li><li>Ocean</li></ul>	<b>Wildlife</b> <ul style="list-style-type: none"><li>Wildlife Habitat Area</li><li>WHA Common Species Name<ul style="list-style-type: none"><li>Coastal Tailed Frog WHA</li><li>Data sensitive WHA</li><li>Grizzly Bear WHA</li><li>Marbled Murrelet WHA</li><li>Northern Caribou WHA</li></ul></li></ul>	<b>Nass South SRMP LUOR Order</b> <ul style="list-style-type: none"><li>Nass South Sustainable Resource Management Plan</li><li>Ecosystem Network</li><li>Equivalent Clearcut Area Threshold Watersheds</li><li>Special Habitats for General Wildlife</li><li>Water Management Units</li><li>Gilanyow Treaty Settlement Lands Offer 2002 - Nass South SRMP - Non Legal</li><li>Nisga'a Lands</li><li>Nass Area</li><li>Nass Wildlife Area</li></ul>	<b>Area Specific Management</b> <ul style="list-style-type: none"><li>Area visible from Sue Channel/Hawkesbury Island Protected Area</li><li>Lakelse River SRMZ - Subzone 1</li><li>Lakelse River SRMZ - Subzone 2</li><li>Milgit Valley</li><li>Upper Kitsumkalum SRMZ</li><li>Wildlife Connectivity Corridors<ul style="list-style-type: none"><li>Kiteen-Cedar Full Retention</li><li>Kiteen-Cedar Partial Retention</li><li>Williams and Thomas/Clore</li></ul></li></ul>
<b>Harvesting Information</b> <ul style="list-style-type: none"><li>TSL Issued</li><li>Declared</li><li>BC Timber Sale Areas</li></ul>	<b>UWR Species</b> <ul style="list-style-type: none"><li>OVDA UWR</li><li>M-ORAM UWR</li><li>M-ALAL UWR</li><li>Wildlife Migration Corridor</li><li>Nelson and Willoughby Creek</li><li>Flat and White River Area</li><li>Nass Moose Winter Survey Area</li></ul>			

