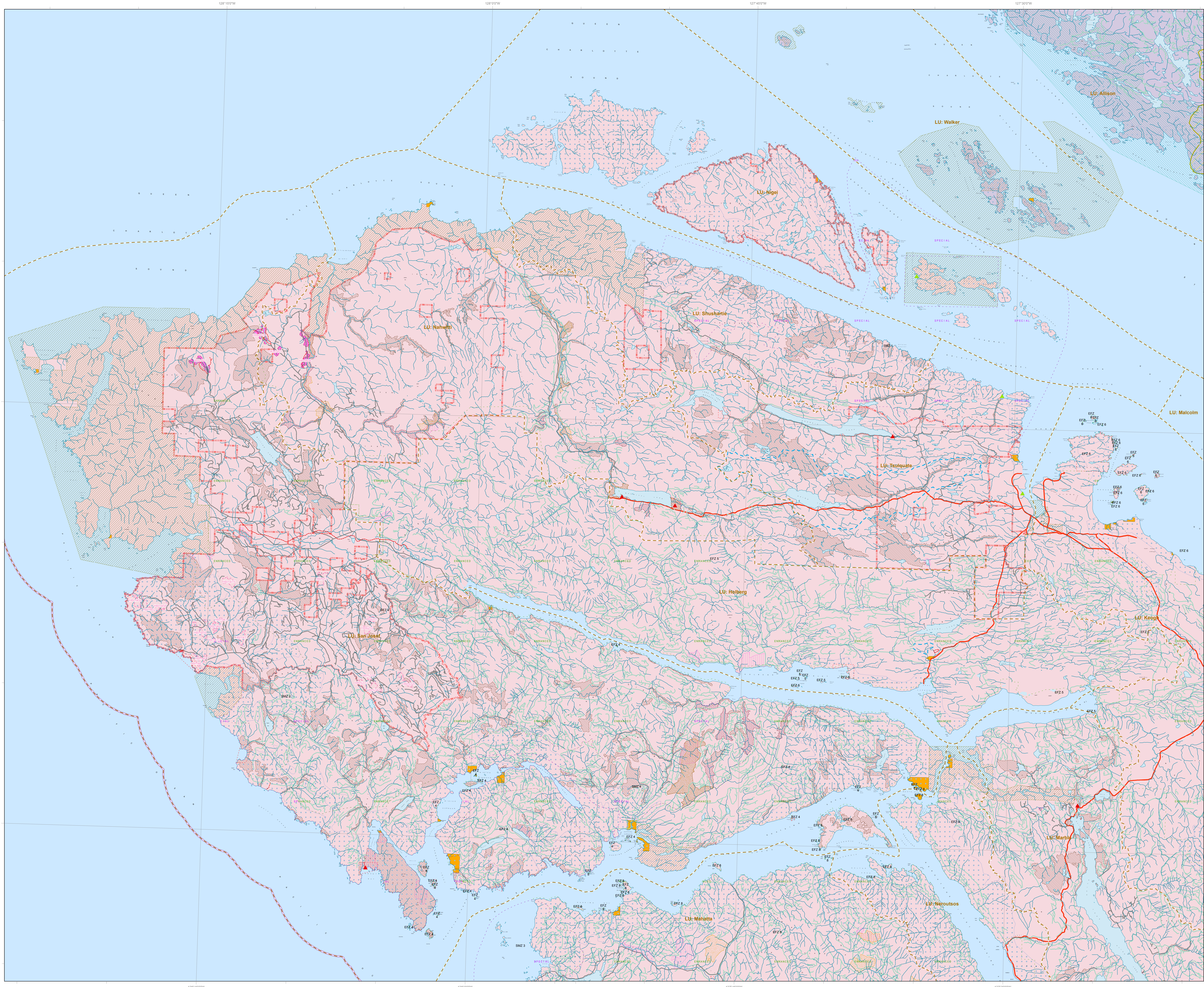


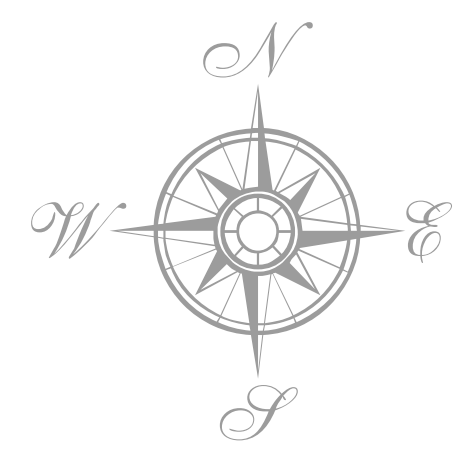
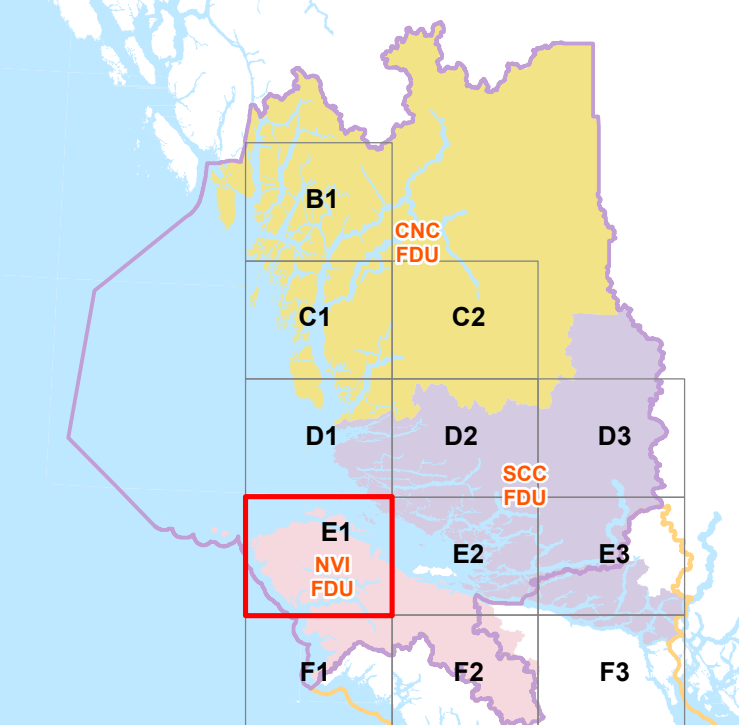
**2024 - 2029**  
**Forest Stewardship Plan**

Map: E1

- Strait of Georgia Boundary**
- Seaward Boundary**
- Forest Development Unit**
  - CNC - Crown Use Only (with Old Growth)
  - SCC - Land Use Crown with Old Growth and Forests, Excess
  - NVI - Non-Volunteer Land, Open Lands and Other Crown Land
- BCTS Forest Stewardship Plan Area Boundary**
- FSP Identified Areas**
- BCTS Operating Area**
- Landscape Unit**
- Indian Reserves**
- Highway**
  
- BCTS Tenures**
  - Active Timber Sales
  - Active Road Permits
  - Forest Service Roads
  
- RIPARIAN MANAGEMENT**
  - Lakeshore Management Zone
  - Waterbodies
  - Creeks/Streams
  - Community Watershed
  - Important Fisheries Watersheds
  
- RESOURCE MANAGEMENT**
  - Old Growth Management Area
  - Ungulate Winter Ranges
  - Wildlife Habitat Areas
  - Parks/Protected Areas
  - Biodiversity, Mining & Tourism
  - Special Management Areas
  - Enhanced Forestry Areas
  - Recreation
    - Resort
    - Site
    - Trail
    - Area
  - Known Scenic Area
  - Visual Quality Objectives
    - M
    - MM
    - P
    - PR
    - R



**Overview Map**



GCS North  
**1:75,000**  
 DATUM: NAD 1983  
 Projection: BC Environment Albers  
 Base Map Data: TMN

map generated on 2024-01-16