

**Forest Development Unit**

- CNC - Land Use Order with Old Dues
- SCC - Land Use Order with Old Dues and Fences, Eases, Cuts, and Timber LU of Old Dues
- NVI - Timber LU of Old Dues and Fences, Eases, Cuts, and Timber LU of Old Dues

**State of Georgia Boundary**

**Seaward Boundary**

**Landscape Unit**

- BCTS Forest Stewardship Plan Area Boundary
- FSP Identified Areas
- BCTS Operating Area
- Indian Reserves
- Highway

**BCTS Tenures**

- Active Timber Sales
- Active Road Permits
- Forest Service Roads

**RIPARIAN MANAGEMENT**

- Lakeshore Management Zone
- Waterbodies
- Creeks/Streams
- Community Watershed
- Important Fisheries Watersheds

**RESOURCE MANAGEMENT**  
as legally established 4 months prior to FSP submission (2024-07-13)

- Old Growth Management Area
- Uniquely Winter Ranges
- Wildlife Habitat Areas
- Parks/Protected Areas
- Biodiversity, Mining & Tourism
- Special Management Areas
- Enhanced Forestry Areas

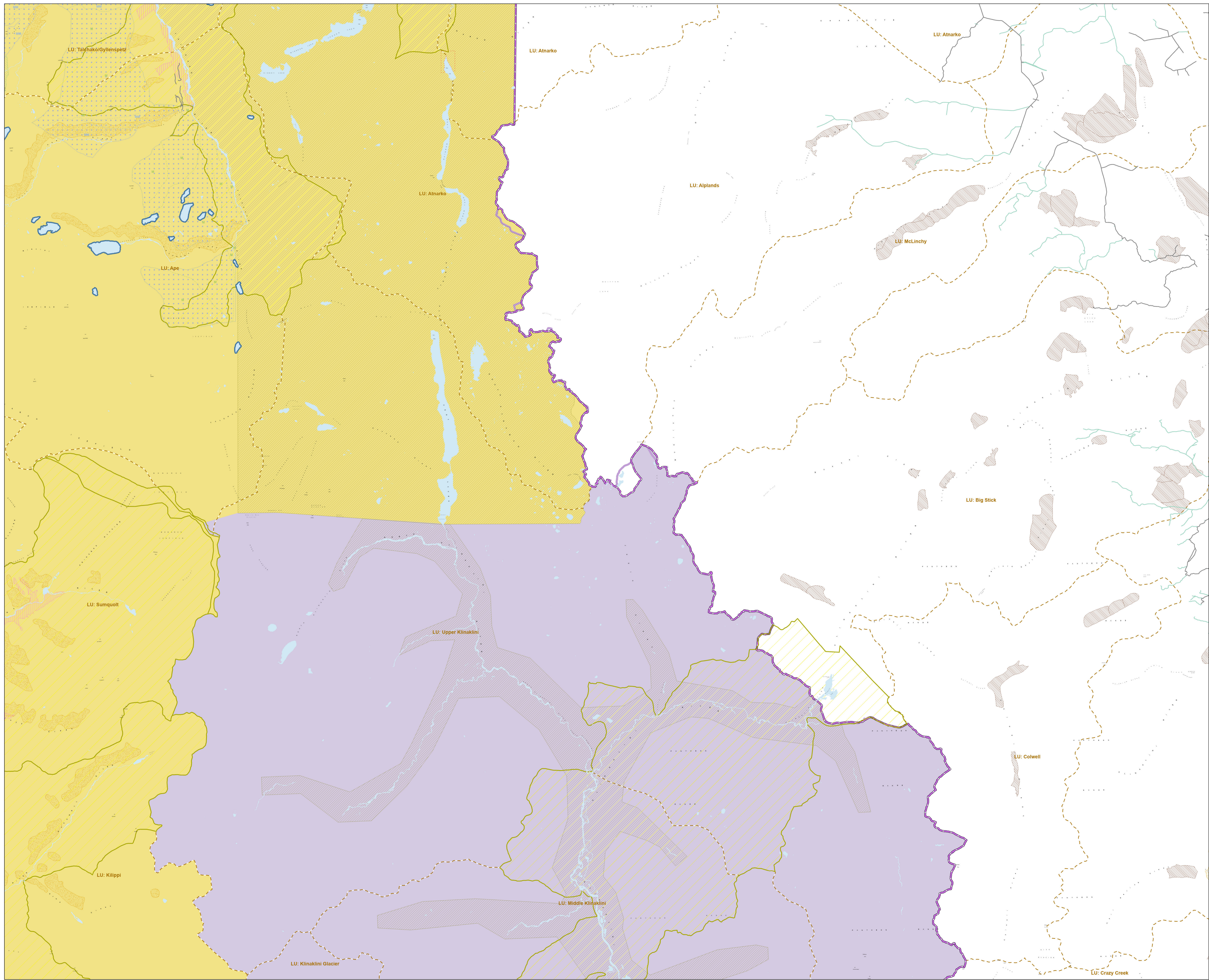
**Recreation**

- Resort
- Site
- Trail
- Area

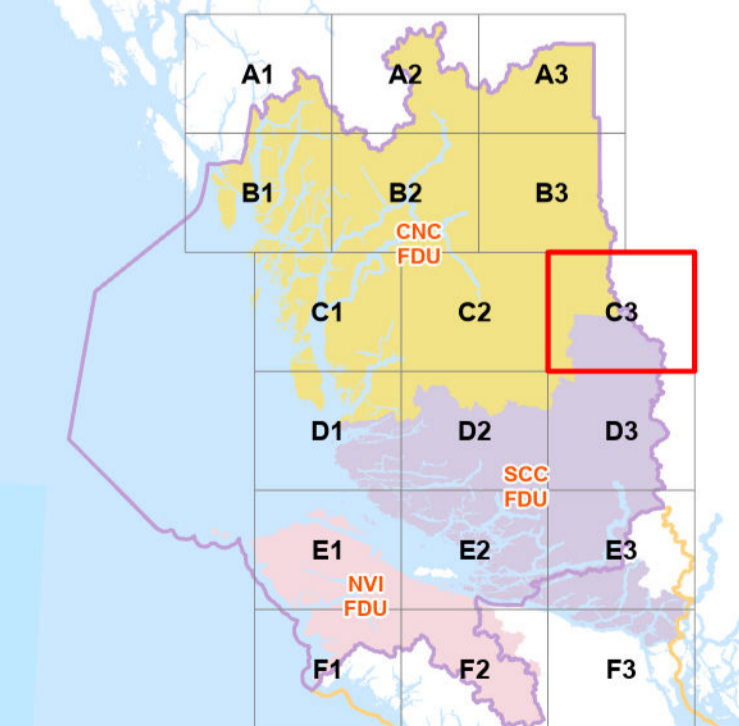
**Known Scenic Area**

**Established Visual Quality Objectives**

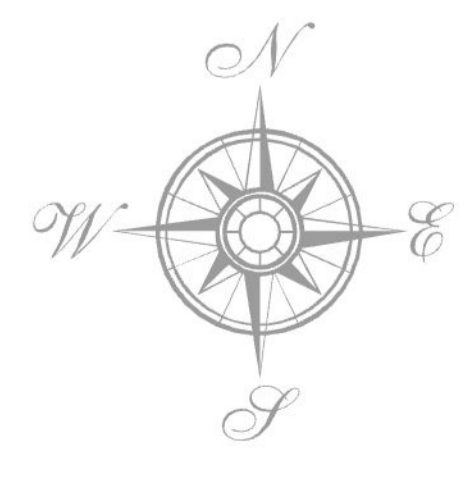
- M
- MM
- P
- PR
- R



**Overview Map**



map generated on 2024-11-15

  
 Grid North  
**1:75,000**  
 DATUM: NAD 1983  
 Projection: BC Environment Albers  
 Base Map Data: TMN