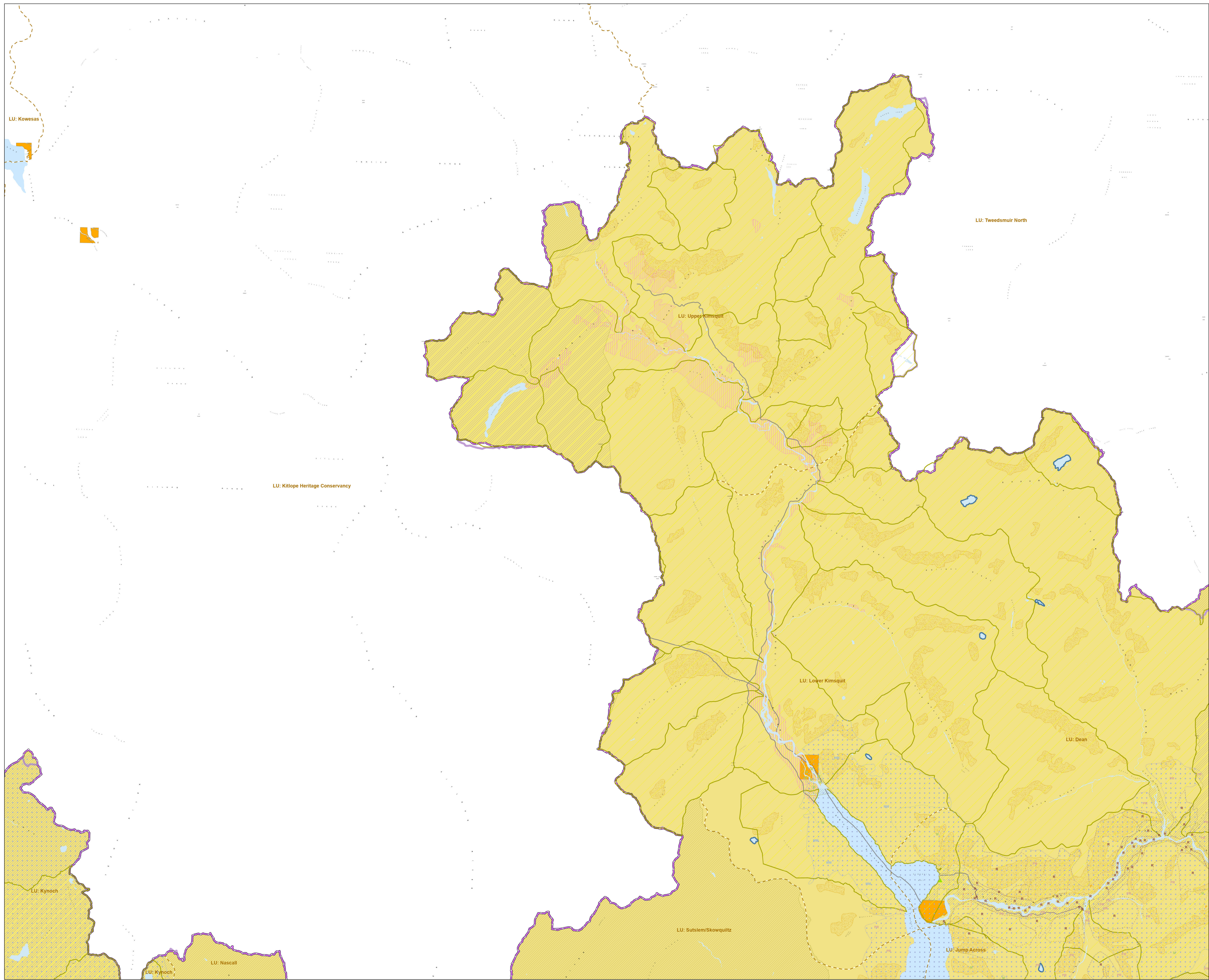
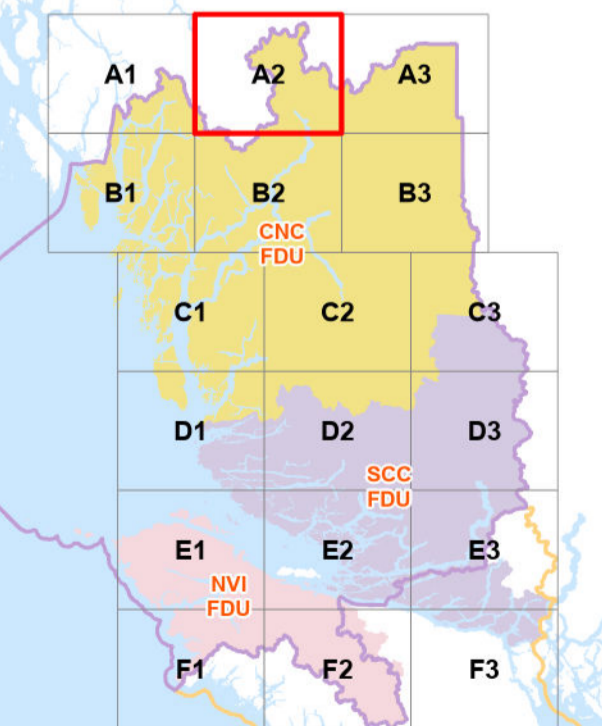


- Forest Development Unit**
- CNC - Land Use Order with Old Growth
  - SCC - Land Use Order with Old Growth and Forests, Esters, Cows, and Timber LU of DCR District
  - NVI - 100% Timber Stand LU
  - Strait of Georgia Boundary
  - Seaward Boundary
  - Landscape Unit
  - BCTS Forest Stewardship Plan Area Boundary
  - FSP Identified Areas
  - BCTS Operating Area
  - Indian Reserves
  - Highway
- BCTS Tenures**
- Active Timber Sales
  - Active Road Permits
  - Forest Service Roads
- RIPARIAN MANAGEMENT**
- Lakeshore Management Zone
  - Waterbodies
  - Creeks/Streams
  - Community Watershed
  - Important Fisheries Watersheds
- RESOURCE MANAGEMENT**  
as legally established 4 months prior to FSP submission (2024-07-15)
- Old Growth Management Area
  - Ungulate Winter Ranges
  - Wildlife Habitat Areas
  - Parks/Protected Areas
  - Biodiversity, Mining & Tourism
  - Special Management Areas
  - Enhanced Forestry Areas
  - Recreation
  - Resort
  - Site
  - Trail
  - Area
  - Known Scenic Area
  - Established Visual Quality Objectives
  - M
  - MM
  - P
  - PR
  - R



**Overview Map**



map generated on 2024-11-15

Grid North  
**1:75,000**  
DATUM: NAD 1983  
Projection: BC Environment Albers  
Base Map Data: TMN