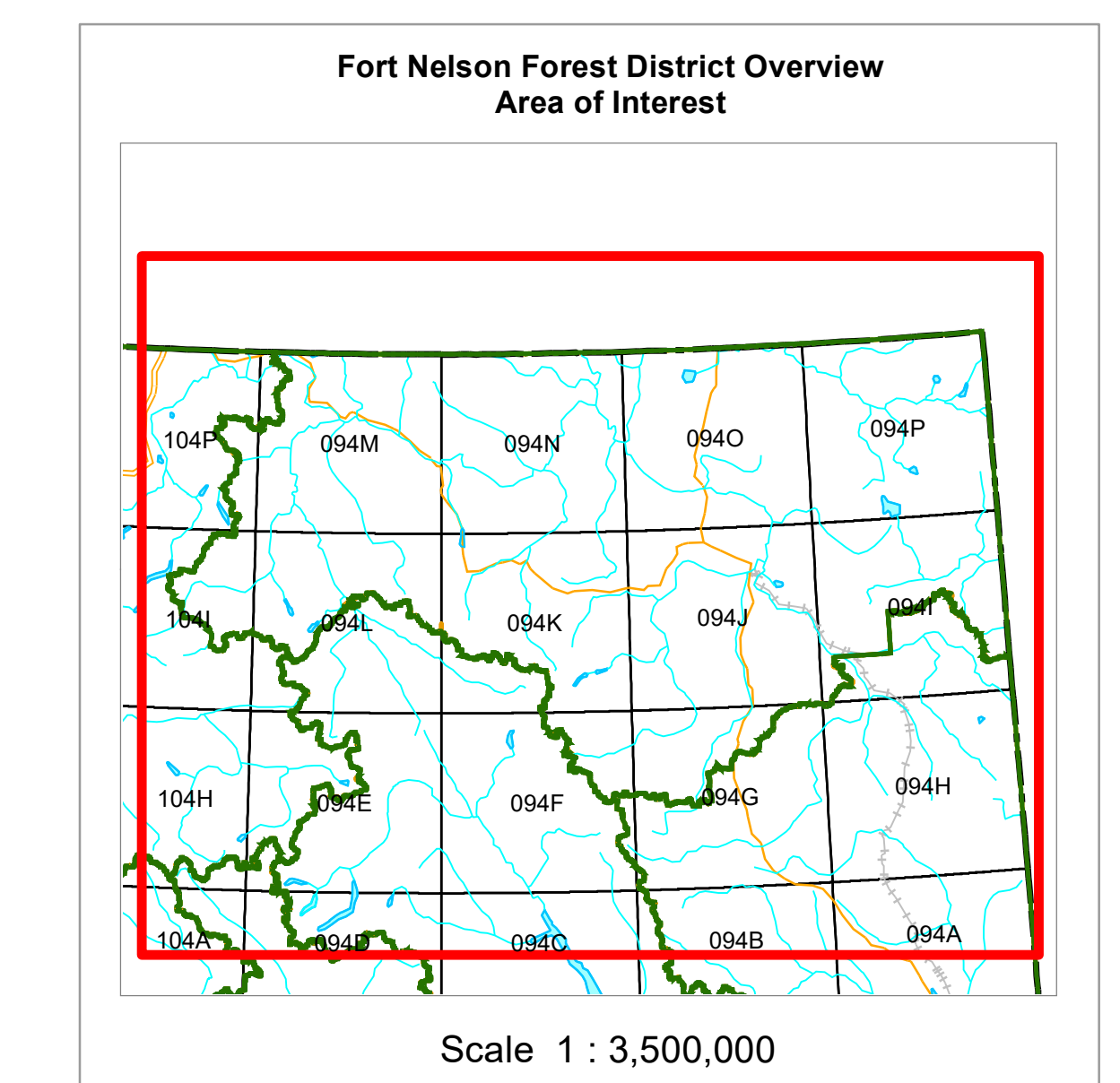
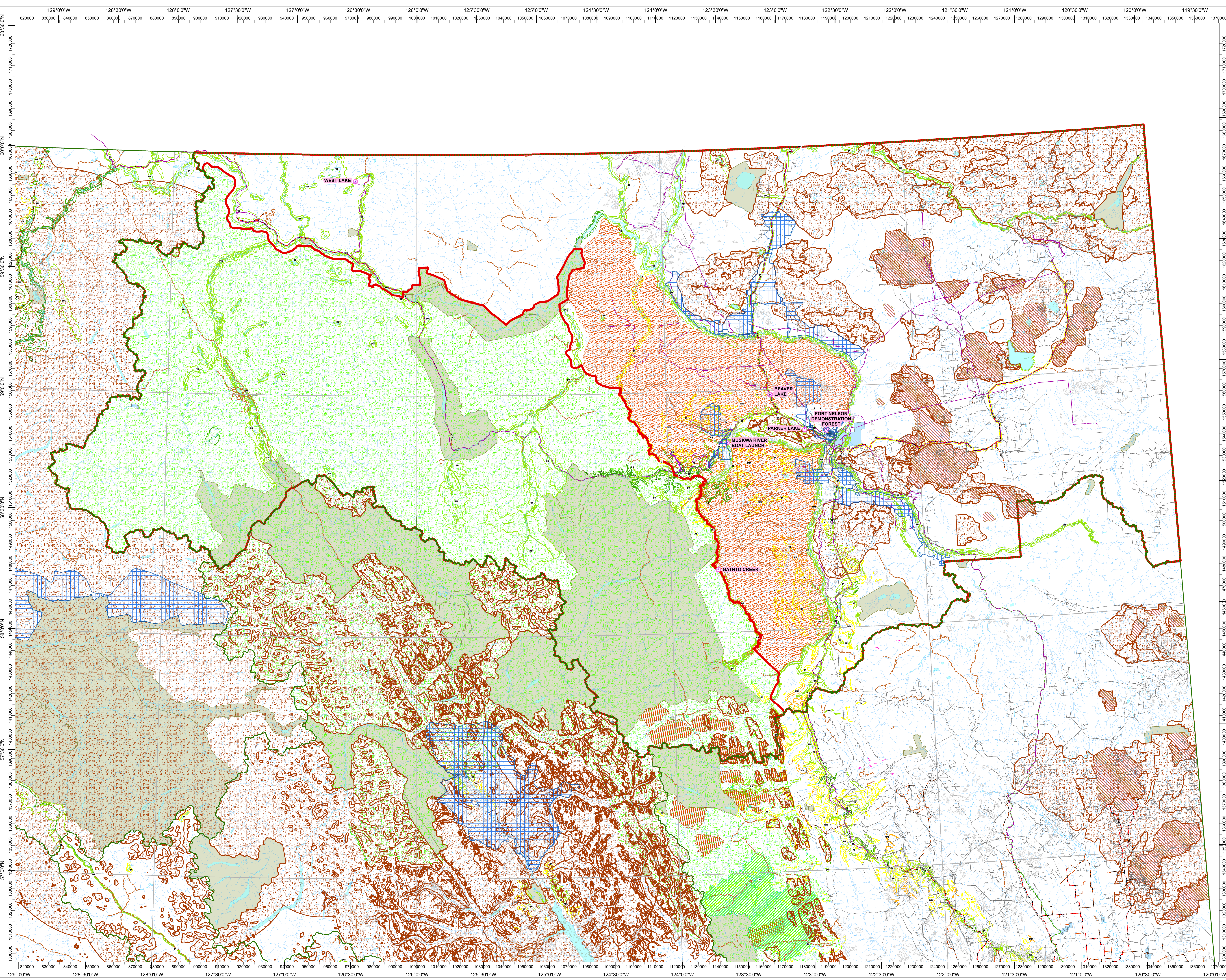
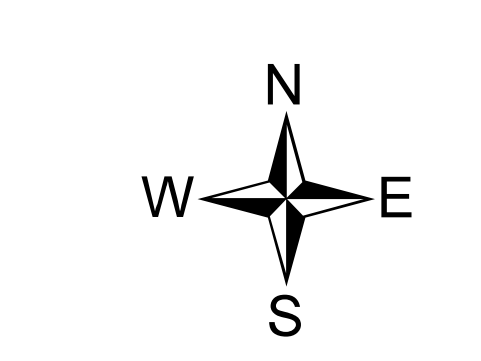


**2019-2024 Forest Stewardship Plan**  
**(2019 Update)**  
**Forest Development Unit Map**

- |  |   |   |
|--|---|---|
| <b>Legend</b><br><ul style="list-style-type: none"> <li> Community Forests</li> <li> Recreation Features</li> <li> City</li> <li> Timber Supply Areas</li> <li> Fort Nelson Major Roads - DFN source</li> <li> Old Alaska HWY</li> <li> Paved Road</li> <li> Forest Service Roads</li> <li> Oil &amp; Gas Industry Roads</li> <li> Gas Line</li> <li> Outline / Seismic</li> </ul> | <b>Transportation Features</b><br><ul style="list-style-type: none"> <li> Trail</li> <li> Bridge</li> <li> Rail Line (Single Track)</li> <li> Cable - Telephone</li> <li> Pipeline Rights of Way</li> <li> Recreation Trails</li> <li> Rocky Mountain EA Section 7 Notice</li> <li> Unusable Winter Range - Approved Colour Filled</li> </ul> | <b>Wildlife Habitat Areas</b><br><ul style="list-style-type: none"> <li> Forest Caribou</li> <li> Data sensitive</li> <li> Mountain Goat</li> <li> Northern Caribou</li> <li> Visual Landscape Inventory - Established Visual Quality Objective</li> <li> Preservation (P)</li> <li> Retention (R)</li> <li> Partial Retention (PR)</li> <li> Modification (M)</li> <li> Maximum Modification (MM)</li> <li> Indian Reserves - Totals - LRDW</li> <li> Muskwa-Kelchika Management Area</li> <li> Parks and Protected Areas</li> </ul> |
|--|---|---|



**Fort Nelson Overview**



Scale : 1:540,000

