

Wildlife and Species at Risk (LPCs) DCR – Coast Mainland



Category	Species	Habitat Range	Defining Characteristics	Action Required
Amphibians Reptiles	Coastal Tailed Frog	<ul style="list-style-type: none"> • Forest >100 yrs old • Within 50m of fast flowing, small, non-fish streams, 15-30% stream gradient 	<ul style="list-style-type: none"> • Tadpoles <ul style="list-style-type: none"> ○ Brownish grey-black ○ sucker type mouth ○ small white spot on tip of tail • Juvenile/Adult <ul style="list-style-type: none"> ○ tan to black ○ light-coloured band or triangle between eyes & snout 	<ul style="list-style-type: none"> • Notify BCTS • Fall away from stream • Avoid cross stream yarding • Avoid machine stream crossings
Birds	Great Blue Heron	<ul style="list-style-type: none"> • Generally near sea level • Near rivers, lakes & wetlands 	<ul style="list-style-type: none"> • Large size (1+m length) • Long rounded wings • Long bill • Short tail • S-shaped neck while flying • Blue-grey with white head 	<ul style="list-style-type: none"> • If a nest or nesting colony is found: <ul style="list-style-type: none"> ○ Stop work within 500m of nest site ○ Notify BCTS
	Northern Goshawk laingi subspecies	<ul style="list-style-type: none"> • Sea level to 900m • Mature forest • Structurally diverse area with large trees • Nests generally on lower 2/3 of slopes <40% 	<ul style="list-style-type: none"> • Raven sized bird of prey • Broad, short wings • Long tail • Bold white stripe above eyes • Blackish grey and sometimes mottled white mask 	<ul style="list-style-type: none"> • If a bird is seen on worksite: <ul style="list-style-type: none"> ○ notify BCTS • If a nest is found: <ul style="list-style-type: none"> ○ Stop work within 500m of nest tree ○ Notify BCTS
	Vancouver Island Northern Pygmy Owl	<ul style="list-style-type: none"> • Only on VI & adjacent Gulf Islands • Usually between 450-1200m • Most frequently along forest edges or in disturbed areas. 	<ul style="list-style-type: none"> • Very small (<17cm in length) • No ear tufts, long tail • A pair of black patches on nape • Secondary cavity nester, often in snags or 'danger trees' previously used by woodpeckers 	<ul style="list-style-type: none"> • If a nest is found: <ul style="list-style-type: none"> ○ stop work within 200m of nest tree ○ Notify BCTS

<i>Category</i>	<i>Species</i>	<i>Habitat Range</i>	<i>Defining Characteristics</i>	<i>Action Required</i>
Birds	Western Screech Owl	<ul style="list-style-type: none"> • Throughout Vancouver Island and coast mainland • Typically in lower elevation forested areas 	<ul style="list-style-type: none"> • Small, streaked owl with yellow eyes • Tufts over the ears • Approx. 21cm (8-9") long with wingspan of 55cm (21") 	<ul style="list-style-type: none"> • If a nest is found: <ul style="list-style-type: none"> ○ Retain the nest tree and stop work within 200m • Notify BCTS
	Bald Eagle	<ul style="list-style-type: none"> • Throughout Vancouver Island and the Coast Mainland 	<ul style="list-style-type: none"> • Large raptor with white face and head • Juveniles all brown • Large stick nest 	<ul style="list-style-type: none"> • If a nest is found: <ul style="list-style-type: none"> ○ Retain the nest tree and stop work within 200m ○ Notify BCTS
	Any bird species	<ul style="list-style-type: none"> • Throughout Vancouver Island and the Coast Mainland 	<ul style="list-style-type: none"> • Any nest occupied by a bird or egg 	<ul style="list-style-type: none"> • If a nest is found: <ul style="list-style-type: none"> ○ Retain the nest tree ○ Notify BCTS
Mammals	Keen's Long-Eared Myotis (bat)	<ul style="list-style-type: none"> • 0-1100m • mature/old forest • Roost in rock knolls/crevices, tree cavities and loose bark • Hibernate in caves >100m long and >400m in elevation 	<ul style="list-style-type: none"> • Fur rich glossy brown • Darker shoulder patches and paler underside • 6-9cm long 	<ul style="list-style-type: none"> • In summer notify BCTS of any sites with bat groupings • In winter notify BCTS of any bats discovered
	Grizzly and Black Bears	<ul style="list-style-type: none"> • Throughout Vancouver Island (black only) and the Coast Mainland (both) 	<ul style="list-style-type: none"> • Ground den: on steep slope with large pile of earth at entrance, evidence of bedding material • Tree base den: sheltered hollow beneath tree • Arboreal den: large diameter trees with large limb scars (den in tree trunk) 	<ul style="list-style-type: none"> • If a den is found: <ul style="list-style-type: none"> ○ Stop work within 50m of den ○ Notify BCTS ○ Between Nov 1 and May 15 do not harvest within 100m of den

**Wildlife and Species at Risk (LPCs)
DCR – Coast Mainland**

<p>Coastal Tailed Frog Tadpole</p> 	<p>Great Blue Heron Nest Colony</p> 	<p>Northern Goshawk</p> 
<p>Coastal Tailed Frog Adult</p> 	<p>Great Blue Heron</p> 	<p>Northern Goshawk Nest</p> 

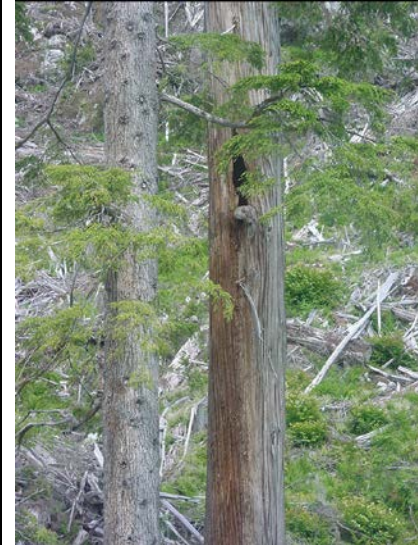
Keen's Long-eared Myotis



Bald Eagle Nest



Arboreal bear den



Vancouver Island Northern Pygmy Owl



Western Screech Owl



Tree base bear den

