



**BCTS**  
BC Timber Sales  
Skeena

## Standard Operating Procedures HEAVY RAINFALL SHUTDOWN

September 2017

This standard operating procedure (SOP) outlines the procedures to evaluate the potential for a landslide at a given site and applies to all licensees and contractors operating within the Skeena Business Area. The Skeena Business Area is divided into three zones: coastal, transitional, and interior. The attached map shows each zone, along with amount of rainfall in the 24-hour period that would trigger a shutdown. BCTS staff involved in the issuance of contracts and inspections of activities for harvesting, road construction and road maintenance must be familiar with this SOP.

To evaluate the potential for a landslide at a given site, it is essential to know the amount of precipitation in a 24 hour period.

To determine the amount of precipitation, install a rain gauge at or near the worksite. At approximately the same time every day, record the date, time and amount of rainfall accumulated in a 24 hour period, as measured in the gauge. Once recorded, empty the rain gauge and return it to its location. When there is no rainfall, record zero. Rain gauges may service more than one worksite if installed within 5 kilometres of that worksite but every project (TSL or contract) must have its own rainfall record within the EMS binder.

The heavy rainfall shutdown thresholds for a 24 hour period in the three zones in the Skeena Business Area are as follows (see attached map for location of zones):

Zone 1 - 50 mm

Zone 2 - 70 mm

Zone 3 - 100 mm

***Once triggered, the shutdown will remain in effect for 24 hours.***

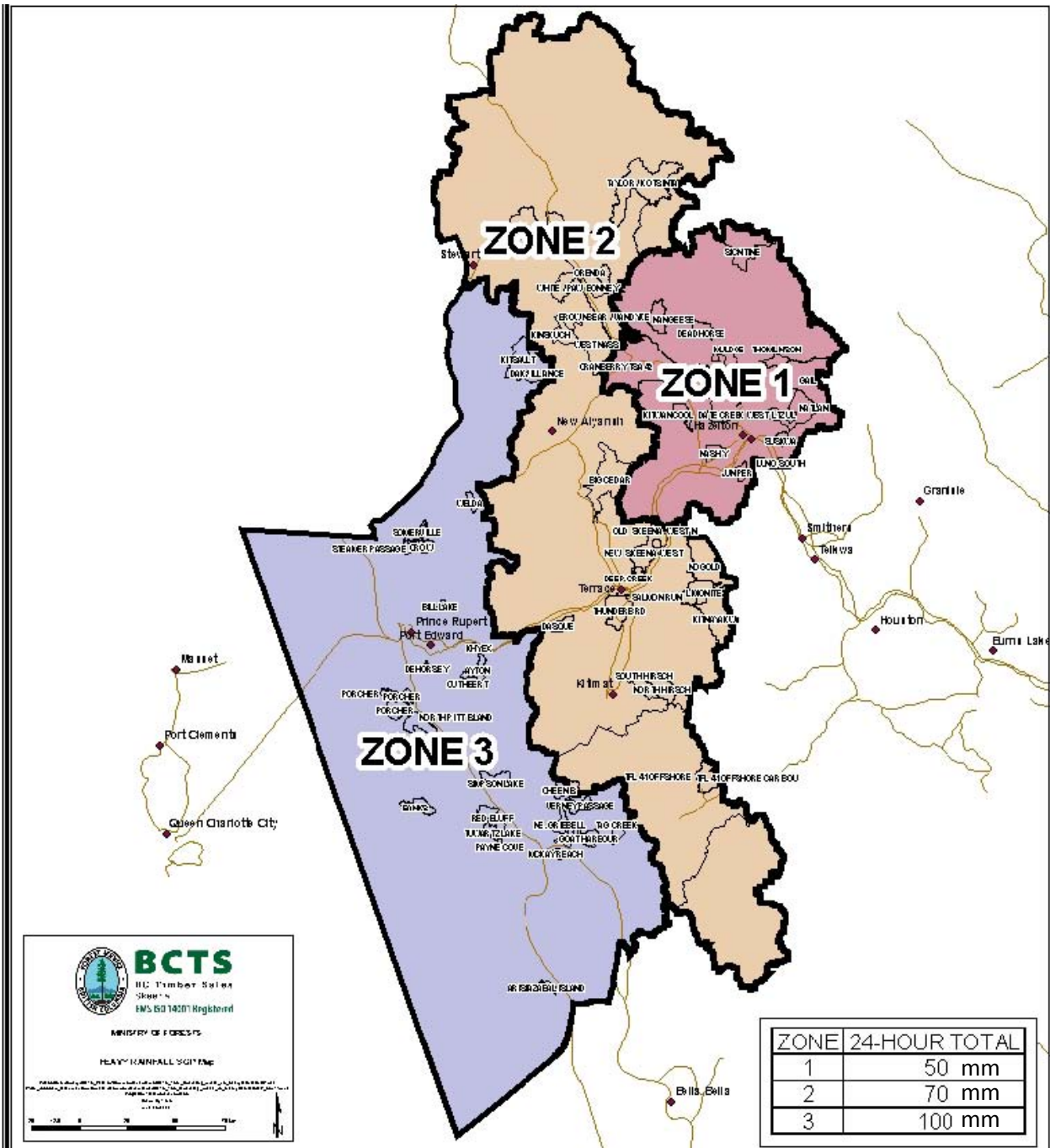
During the project the contractor or licensee will retain the rainfall record sheet and make it available upon request.

Once the project is complete the rainfall record sheet will be retained as follows:

For contracts: The contractor will turn over the rainfall record to the contract coordinator who will place it on the contract file.

For Timber Sale Licence Holders: Once the licence is closed the licensee may retain the rainfall record sheet.





Heavy Rainfall Shutdown by Operating Area