

# Douglas-fir-Rocky Mountain Juniper/Kinnikinnick

*Pseudotsuga menziesii* / *Juniperus scopulorum* / *Arctostaphylos  
uva-ursi*

Prepared by Chris Gill, MSc, RPBio  
Kestrel Consulting  
Phone: (250) 835-8256  
Email: cegill@gmail.com  
Date: October 23, 2007

**Disclaimer:** Very little information is currently available for this rare plant community. This species account was primarily developed using plant identification guidebooks and Dennis Lloyd biogeoclimatic zone classifications.

## Conservation Status

Included in Section 7 Notice: No

Designated as Identified Wildlife: No

Federally Designated (COSEWIC): No

Species identified in Kamloops, Lillooet or Merritt SFMP: **Yes (Kamloops)**

## Description

- Dry cool plant community dominated by Douglas-fir stands occurring in the IDFdk3/02 zone.
- The shrub layer is dominated by Rocky Mountain juniper. This is a shrubby tree with a wide, irregularly rounded crown and knotty, twisted trunk reaching 13 metres in height.
- Sparse herb layer dominated by kinnikinnick (*Arctostaphylos uva-ursi*) which is a trailing evergreen shrub not over 20cm in height with brownish-red bark and long flexible rooting branches. Kinnikinnick often forms large vegetation mats. Flowers are small, urn-shaped and pinkish white. Bright red berries like miniature apples with large very hard seeds.
- NOTE: This is a rare plant community with limited distribution.



Kinnikinnick



Rocky Mountain Juniper

**Forest Districts**

**100-Mile House**, Central Cariboo, **Cascades, Kamloops**, Quesnel

**BEC Zones**

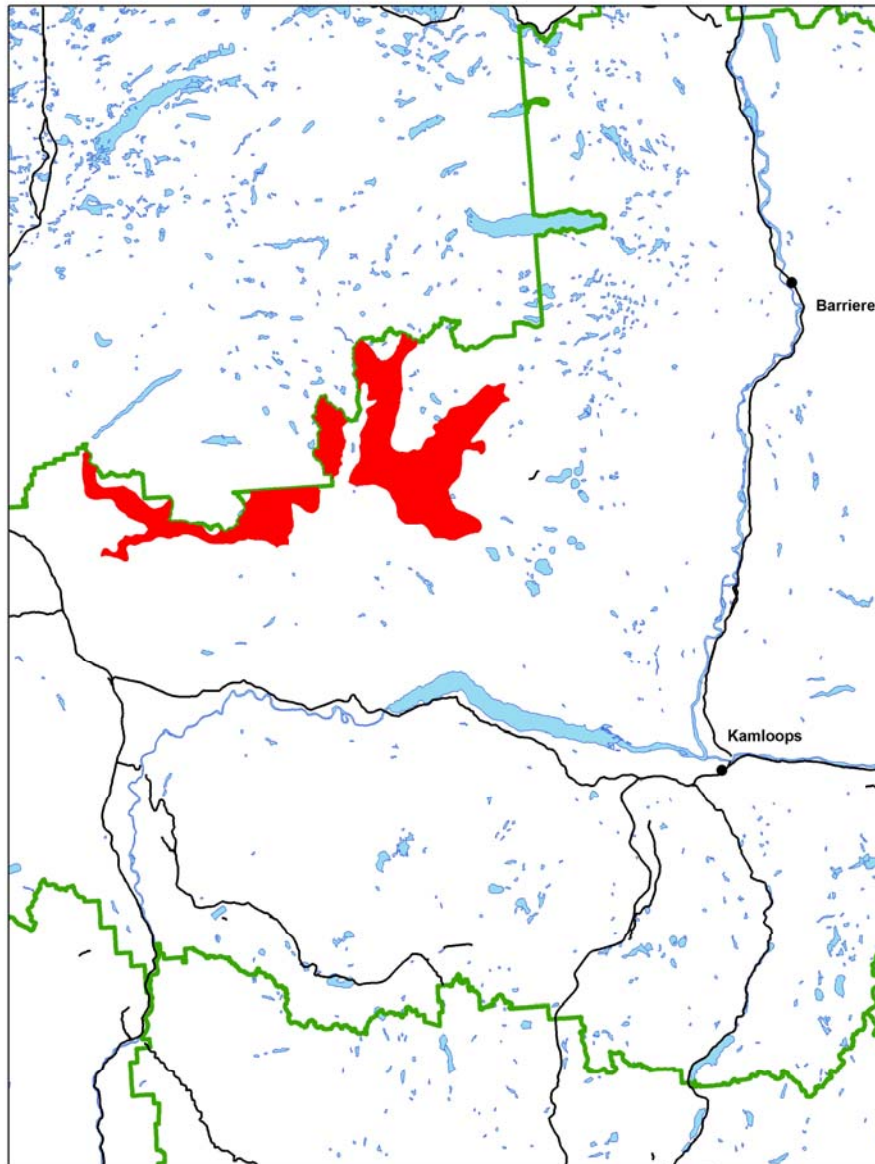
IDFdk3/02

**Elevation**

Not available.

**Important Habitat Features**

Very little information is available for this plant community. Please refer to the following map for the location of the BEC zone where this plant community may be found.



Location of IDFk3 in the Kamloops TSA

**Additional Information**

This plant community is geographically very restricted. No known locations available from the Conservation Data Centre. Please refer to plant guidebooks such as *Plants of the Southern Interior British Columbia and the Inland Northwest* (Lone Pine Press, 463pp) for assistance with the identification of individual species comprising this community.

## Management Recommendations

The following management recommendations are generalized due to the limited information available for this plant community.

Where this plant community is found:

- Retain a qualified plant ecologist (Registered Professional Biologist) to confirm the presence of the plant community and determine the extent of the local population.
- Establish a no harvest buffer zone and a management zone large enough to maintain ecological site conditions associated with this plant community, including undisturbed forest structure, substrate, and associated microclimate. The size of this buffer will vary based on specific site conditions and should be determined by the qualified plant ecologist (Registered Professional Biologist).
- In the no harvest buffer zone:
  - Do not build roads or trails.
  - Do not harvest or salvage except to support restoration measures with silvicultural treatments that are recommended by a qualified plant ecologist (Registered Professional Biologist).
  - Do not remove non-timber forest products.
  - Do not use pesticides.
- Minimize impacts to vegetation, soils, and hydrology when operating in the management zone adjacent to this plant community, particularly during road development and maintenance.
- Prevent the introduction and spread of invasive species.
- Allow for the processes of litter accumulation, renewal, and microbotic crust development.
- Maintain a diversity of natural disturbance regimes.

## References

Lloyd, D.A, K. Angove, G.D. Hope, and C. Thompson. 1990. A Guide to Site Identification and Interpretation for the Kamloops Forest Region. Ecosystems Research Branch. 399pp.

Lloyd, D., M. Ryan, N. Brand, M. Doney, V. Larson, and J. MacDonald. 2005. Site Classification for 52 Biogeoclimatic Units in the Southern Interior Forest Region. Draft. BC Ministry of Forests. Available online at: [ftp://ftp.for.gov.bc.ca/RSI/external!/publish/Dennis\\_Lloyd\\_BEC\\_Materials](ftp://ftp.for.gov.bc.ca/RSI/external!/publish/Dennis_Lloyd_BEC_Materials)

Ministry of Forests and Range. 2006. Biogeoclimatic Ecosystem Classification Program. Accessed online from <http://www.for.gov.bc.ca/hre/becweb/>

Parish, Roberta, Ray Coupe and Dennis Lloyd. 1996. Plants of Southern Interior British Columbia and the Inland Northwest. Lone Pine Publishing, Vancouver, BC. 463pp.