



**Fast Stats 2018**

**British Columbia's  
AGRICULTURE, FOOD AND SEAFOOD SECTOR**

**Fall 2019**



**BRITISH  
COLUMBIA**

**Canada**



# CONTENTS

<b>HIGHLIGHTS</b>	<b>3</b>	POULTRY PRODUCTION AND DISPOSITION	33
VALUE OF B.C.'S AGRICULTURE, FOOD AND SEAFOOD INDUSTRY	3	EGG PRODUCTION AND DISPOSITION	33
SECTOR REVENUES	3	HONEY PRODUCTION	34
PRIMARY AGRICULTURE	3	AQUACULTURE PRODUCTION	34
PRIMARY SEAFOOD	3	WILD COMMERCIAL FISHERIES PRODUCTION	34
FOOD AND BEVERAGE PROCESSING	3	AQUACULTURE PRICES	35
B.C.'S TOP AGRICULTURE, FOOD AND SEAFOOD EXPORTS	4	WILD COMMERCIAL FISHERIES PRICES	35
B.C.'S TOP 30 AGRICULTURE, FOOD AND SEAFOOD COMMODITIES	5	<b>VALUE OF AGRICULTURE, FOOD AND SEAFOOD</b>	<b>36</b>
AREAS OF AGRICULTURAL ACTIVITY BY CENSUS AGRICULTURAL REGION – SOUTH	6	FARM CASH RECEIPTS FOR AGRICULTURE	36
AREAS OF AGRICULTURAL ACTIVITY BY CENSUS AGRICULTURAL REGION – NORTH	7	FARM CASH RECEIPTS, BY AGRICULTURAL COMMODITY GROUP	37
<b>SECTOR PROFILE</b>	<b>8</b>	VALUE OF POLLINATION IN B.C.	39
RESOURCES IN BRITISH COLUMBIA AGRICULTURE	8	FARM GATE VALUE OF AQUACULTURE COMMODITIES	40
AGE OF B.C. FARM OPERATORS	9	LANDED VALUE OF WILD COMMERCIAL FISHERIES	40
B.C. FARMLAND TENURE	9	VALUE OF FOOD AND BEVERAGE PROCESSING SALES	41
NUMBER OF ORGANIC FARMS	9	<b>FARM INCOME AND EXPENSES</b>	<b>42</b>
NUMBER OF AGRICULTURE, FOOD AND SEAFOOD ESTABLISHMENTS BY INDUSTRY	10	FARM OPERATING EXPENSES AND DEPRECIATION CHARGES	42
NUMBER OF OTHER AGRICULTURE, FOOD AND SEAFOOD RELATED ESTABLISHMENTS BY INDUSTRY	11	FARM INCOME IN B.C.	43
B.C. AGRICULTURAL LAND MANAGEMENT PRACTICES	12	TOTAL AGRICULTURAL FARM DEBT OUTSTANDING	43
FARMS USING COMPUTERS AND OTHER TECHNOLOGIES	12	<b>EMPLOYMENT AND OTHER ECONOMIC INDICATORS</b>	<b>44</b>
NUMBER OF FARMS SELLING DIRECTLY TO CONSUMERS	14	EMPLOYMENT IN THE B.C. AGRICULTURE, FOOD AND SEAFOOD SECTOR	44
<b>PRODUCTION AND PRICES</b>	<b>15</b>	OTHER AGRICULTURE, FOOD AND SEAFOOD SECTOR RELATED EMPLOYMENT	45
GRAINS, OILSEEDS AND OTHER FIELD CROPS	15	TEMPORARY FOREIGN WORKERS IN B.C. AGRICULTURAL OCCUPATIONS	45
SELECTED GRAINS AND OILSEED PRICES	16	CONTRIBUTION TO GDP BY SECTOR	46
FIELD VEGETABLES	16	FARM PRODUCT PRICE INDEX	47
GREENHOUSE VEGETABLES	22	PRICE INDEXES	47
BERRIES AND GRAPES	23	PER CAPITA CONSUMPTION OF SELECTED FOODS IN CANADA	48
TREE FRUITS	24	B.C. CONSUMER AND PROCESSOR PURCHASES OF LOCALLY PRODUCED AGRICULTURE, FOOD AND SEAFOOD	49
FLORICULTURE PRODUCTS	26	<b>END NOTES</b>	<b>50</b>
PRODUCTION OF SOD AND NURSERY PRODUCTS	28	DATA SOURCES	52
<b>ANIMAL PRODUCTION AND PRICES</b>	<b>29</b>	CONTACT INFORMATION	52
LIVESTOCK ON B.C. FARMS	29		
LIVESTOCK PRICES	30		
LIVESTOCK SUPPLY AND DISPOSITION	31		
MILK PRODUCTION AND UTILIZATION	33		

# HIGHLIGHTS

## VALUE OF B.C.'S AGRICULTURE, FOOD AND SEAFOOD INDUSTRY

British Columbia's (B.C.'s) agriculture, food and seafood industry includes primary production in agriculture, aquaculture, commercial fisheries and the processing of food and beverages.

Sales: \$14.95 billion, up 5.2 per cent over 2017.

Total 2018 sales include:

- Agriculture Farm Cash Receipts: \$3.45 billion.
- Aquaculture and Commercial Fisheries Landed Values: \$1.29 billion.
- Food and Beverage Processing Sales: \$10.21 billion.

## SECTOR REVENUES

Sector	\$ Millions			\$ Billions			2018 vs. 2017
	2016	2017	2018	2016	2017	2018	% Change
Crops	1,623	1,674	1,795	1.62	1.67	1.79	7.2%
Livestock and Poultry	1,466	1,540	1,612	1.47	1.54	1.61	4.7%
Direct Program Payments	30	39	42	0.03	0.04	0.04	8.8%
<b>Agriculture</b>	<b>3,119</b>	<b>3,253</b>	<b>3,449</b>	<b>3.1</b>	<b>3.3</b>	<b>3.45</b>	<b>6.0%</b>
<b>Seafood (Aquaculture and Commercial Fisheries)</b>	<b>1,180</b>	<b>1,168</b>	<b>1,291</b>	<b>1.2</b>	<b>1.2</b>	<b>1.29</b>	<b>10.5%</b>
<b>Food and Beverage Processing</b>	<b>9,594</b>	<b>9,797</b>	<b>10,212</b>	<b>9.6</b>	<b>9.8</b>	<b>10.21</b>	<b>4.2%</b>
<b>B.C. AGRICULTURE, FOOD AND SEAFOOD TOTAL REVENUES</b>	<b>13,894</b>	<b>14,218</b>	<b>14,952</b>	<b>13.9</b>	<b>14.2</b>	<b>14.95</b>	<b>5.2%</b>

Totals may not add due to rounding.

### PRIMARY AGRICULTURE

Climatic conditions in the province make it possible for B.C.'s farmers to grow well over 200 commodities. Total farm cash receipts from the sale of crops, including grains, oilseeds, tree fruits, berries, grapes, field and greenhouse vegetables, floriculture, nursery, forage and other crops, increased 7.2% to \$1.79 billion in 2018. Total livestock receipts, from the sale of cattle, hogs, poultry, eggs, dairy, honey and other animals and animal products increased by 4.7% to \$1.61 billion.

In 2018, B.C. producers led the nation in farm sales of blueberries, sweet cherries, rhubarb, raspberries, prunes and plums, blackberries, apricots and pears, and ranked second in farm sales of greenhouse vegetables, floriculture products, mushrooms, nursery products, Brussels Sprouts, kale, lettuce, beets, grapes, cranberries, apples, pears, peaches, nectarines, watermelons and cannabis.

### PRIMARY SEAFOOD

Aquaculture farm gate sales from salmon, clams, oysters, mussels, and other species totaled \$0.81 billion, while commercial fishing landed values from salmon, herring, groundfish, shellfish, and other species totaled \$0.48 billion. B.C. led the nation in sales of farmed salmon, wild salmon, crabs, wild clams (including geoducks), halibut, wild sablefish, hake, rockfish, tuna, wild sea cucumbers, sea urchins, and skates.

### FOOD AND BEVERAGE PROCESSING

The province's food and beverage processing sector is the second largest manufacturing sector in the province after forestry (wood and paper). Food and beverage manufacturing generated \$10.21 billion in sales in B.C. in 2018, an increase of 4.2 per cent over 2017 and more than 14 per cent over the previous five year average of \$8.2 billion.

## B.C.'S TOP AGRICULTURE, FOOD AND SEAFOOD EXPORTS

Rank	Category	\$ Millions						Average 2013–2017	2018 vs. 2017 % Change	2018 vs. Average % Change
		2013	2014	2015	2016	2017	2018			
1	Atlantic Salmon	267.1	255.0	411.3	524.2	512.3	541.1	394.0	5.6%	37.3%
2	Food Preparations for Manufacturing and Natural Health Products	167.3	207.6	273.3	299.3	317.6	361.4	253.0	13.8%	42.8%
3	Blueberries	154.4	168.7	218.0	200.2	221.9	242.6	192.7	9.3%	25.9%
4	Baked Goods	101.8	122.4	159.0	196.1	225.9	229.5	161.0	1.6%	42.5%
5	Mushrooms	79.4	88.1	131.2	156.4	153.3	188.8	121.7	23.1%	55.2%
6	Crabs	86.8	102.0	116.0	141.5	130.9	159.1	115.5	21.5%	37.8%
7	Animal Feed	73.2	82.3	104.5	112.4	112.7	134.7	97.0	19.5%	38.8%
8	Floriculture	65.5	81.7	96.7	106.9	112.1	118.1	92.6	5.3%	27.5%
9	Cherries	40.5	53.8	91.7	83.3	81.5	107.5	70.2	31.9%	53.2%
10	Pork	89.4	84.6	92.9	105.6	108.6	107.3	96.2	-1.2%	11.5%
	All Other Commodities	1,813.3	2,008.7	1,846.8	1,897.4	2,132.6	2,325.7	1,939.8	9.1%	19.9%
	<b>Total</b>	<b>2,938.9</b>	<b>3,254.9</b>	<b>3,541.3</b>	<b>3,823.3</b>	<b>4,109.5</b>	<b>4,515.8</b>	<b>3,533.6</b>	<b>9.9%</b>	<b>27.8%</b>

Source: Statistics Canada, CATSNET Analytics (April, 2019).



## B.C.'S TOP 30 AGRICULTURE, FOOD AND SEAFOOD COMMODITIES

Rank	Commodity	2017 B.C. Receipts (\$'000)	2018 B.C. Receipts (\$'000)	2017 Canada Receipts (\$'000)	2018 Canada Receipts (\$'000)	B.C. Share of 2018 National	B.C. Rank in 2018 National <sup>1</sup>
1	Farmed Salmon <sup>1</sup>	728,600	772,500	1,056,076	na	na	1
2	Dairy products	624,946	633,215	6,564,476	6,638,649	9.5%	3
3	Chickens	376,128	411,557	2,541,327	2,690,829	15.3%	3
4	Greenhouse Vegetables	301,982	299,233	1,437,089	1,511,251	19.8%	2
5	Floriculture	301,077	289,738	1,146,683	1,195,087	24.2%	2
6	Beef	240,982	255,547	9,061,075	9,071,754	2.8%	6
7	Mushrooms	173,785	177,278	527,570	537,321	33.0%	2
8	Nursery <sup>2</sup>	156,387	162,000	479,201	482,037	33.0%	2
9	Blueberries	136,527	161,168	215,902	243,408	66.2%	1
10	Eggs <sup>3</sup>	143,553	154,941	1,075,483	1,146,570	13.5%	3
11	Wild Salmon	55,400	111,700	na	na	na	1
12	Cherries, Sweet	84,744	88,941	88,173	92,371	96.3%	1
13	Grapes	63,121	72,583	191,952	187,969	38.6%	2
14	Crab, Other <sup>4</sup>	51,100	63,800	59,246	na	na	1
15	Licensed Cannabis	22,283	61,901	189,012	564,077	11.0%	2
16	Apples	55,453	59,955	228,391	232,131	25.8%	3
17	Geoduck and Other Clams (Wild)	52,000	51,600	138,957	na	na	1
18	Potatoes	47,881	49,544	1,237,741	1,279,952	3.9%	7
19	Turkeys	48,209	48,742	383,892	391,787	12.4%	3
20	Canola	27,706	47,609	9,950,474	9,300,333	0.5%	4
21	Halibut	58,900	44,100	121,570	na	na	1
22	Prawn and Shrimp	31,100	44,100	339,544	na	na	4
23	Cranberries	45,455	43,254	121,166	140,416	30.8%	2
24	Hay & Clover	35,789	40,508	483,335	524,796	7.7%	4
25	Wild Sablefish <sup>5</sup>	29,300	34,600	na	na	na	na
26	Hogs	32,312	31,317	4,508,516	4,108,387	0.8%	6
27	Hake	19,300	26,400	41,256	na	na	1
28	Rockfish <sup>6</sup>	24,100	22,100	40,292	na	na	1
29	Herring	27,500	21,700	66,848	na	na	2
30	Raspberries	19,329	19,409	35,099	35,428	54.8%	1

**Sources:** Statistics Canada and Adapted from Statistics Canada. Tables 32-10-0045-01; 32-10-0456-01; 32-10-0364-01; 32-10-0365-01; 32-10-0358-01; and direct files obtained from Statistics Canada, Division of Agriculture; B.C. Ministry of Agriculture, 2017 Seafood Year in Review; and Fisheries and Oceans Canada, Commercial Fisheries Landings.

**1** - BC Rank - For seafood, BC's national ranking is based on 2017, as the Canadian data for 2018 was not available as of July 2019.

**2** - Due to suppressed estimates for B.C. farm cash receipts in Nursery Products and in Sod in 2018, the 2018 values have been estimated using the shares of nursery FCR and sod FCR to B.C.'s total nursery and sod FCR in 2017, applied to B.C.'s total nursery and sod farm cash receipts in 2018.

**3** - Includes consumption eggs only.

**4** - Excludes queen crabs.

**5** - Estimates are not available for Canada receipts of sablefish.

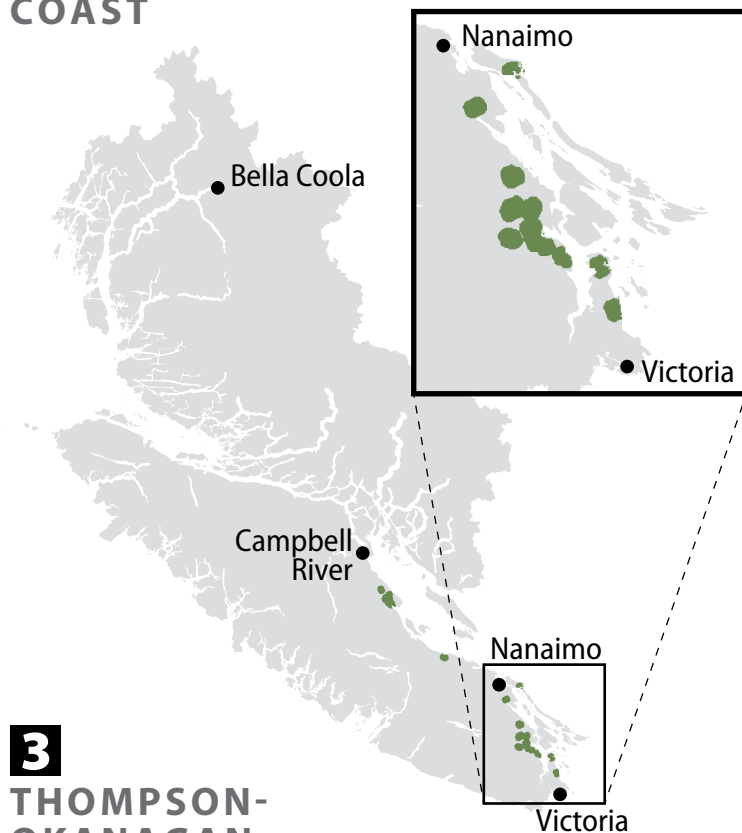
**6** - Rockfish is reported as "redfish spp" in the Canada data released by Fisheries and Oceans Canada.

**na** - not available.

## AREAS OF AGRICULTURAL ACTIVITY BY CENSUS AGRICULTURAL REGION – SOUTH

**1**

### VANCOUVER ISLAND-COAST



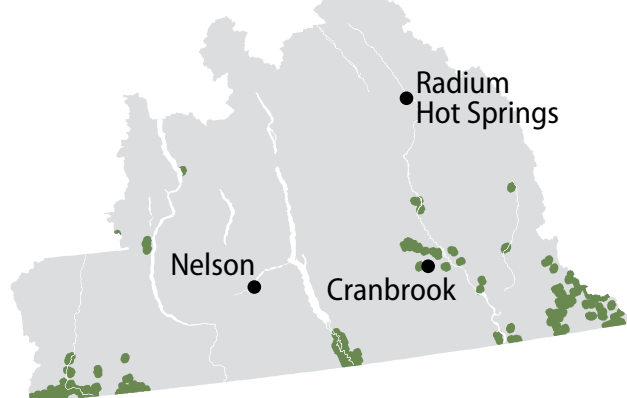
**2**

### LOWER MAINLAND-SOUTHWEST



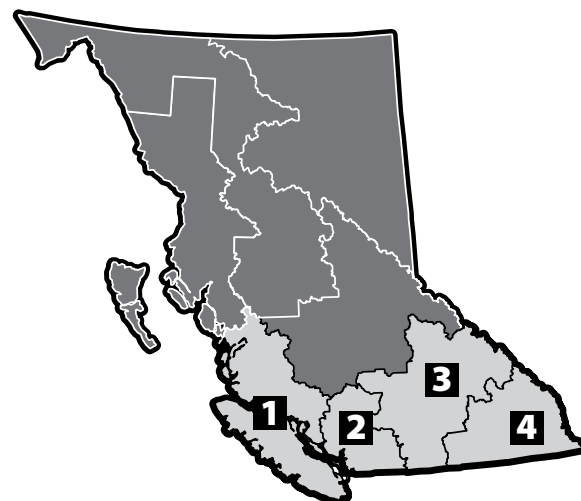
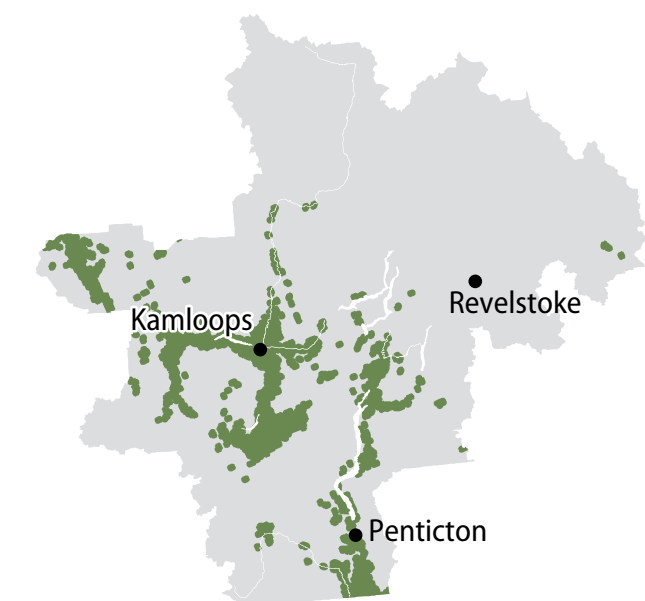
**4**

### KOOTENAY



**3**

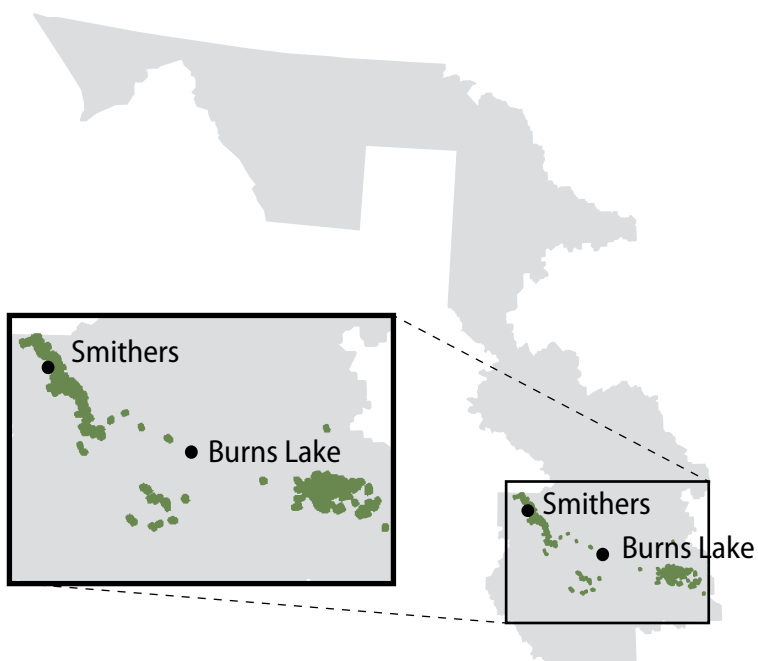
### THOMPSON-OKANAGAN



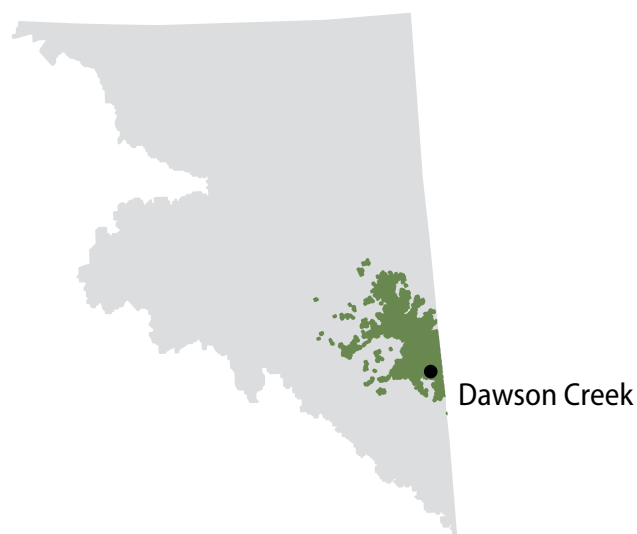
*Source: Adapted from a 1km agricultural ecumene provided by Remote Sensing and Geospatial Analysis, Agriculture Division, Statistics Canada, 2018*

## AREAS OF AGRICULTURAL ACTIVITY BY CENSUS AGRICULTURAL REGION – NORTH

### 7 NECHAKO



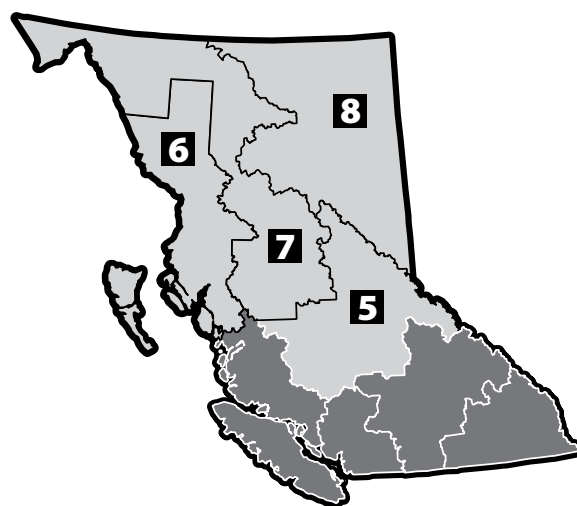
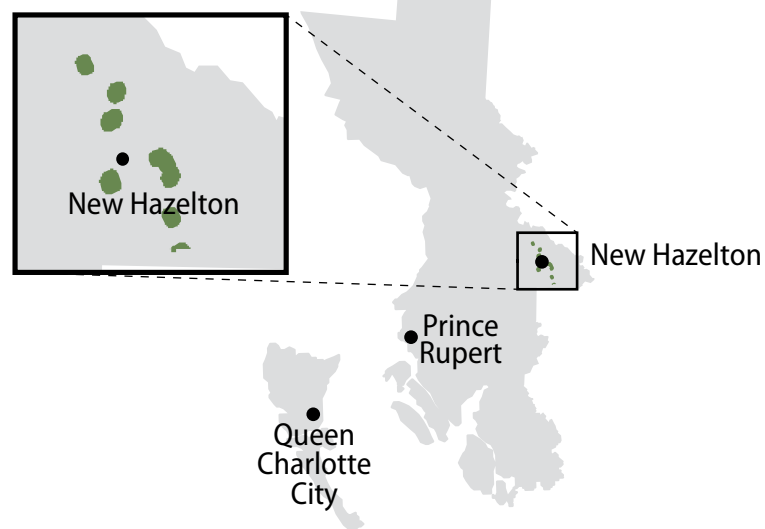
### 8 PEACE RIVER



### 5 CARIBOO



### 6 NORTH COAST



**Source:** Adapted from a 1km agricultural ecumene provided by Remote Sensing and Geospatial Analysis, Agriculture Division, Statistics Canada, 2018

# SECTOR PROFILE

## RESOURCES IN BRITISH COLUMBIA AGRICULTURE

	1996 Census	2001 Census	2006 Census	2011 Census	2016 Census
<b>Land</b>	<b>(hectares)</b>				
Provincial Land Area <sup>1</sup>	89,307,184	89,307,184	92,518,600	92,518,600	92,518,600
Land in Agricultural Land Reserve <sup>2</sup>	4,710,190	4,721,548	4,761,428	4,759,773	4,615,909
Total Farm Land <sup>3</sup>	2,529,060	2,587,118	2,835,458	2,611,382	2,590,210
Land in Crops	565,738	617,545	586,238	599,674	580,820
Land in Pasture	240,236	233,044	245,793	226,298	205,872
Summer Fallow	39,017	36,765	25,581	17,836	5,337
Unimproved Land	1,172,591	1,207,553	1,499,563	1,385,359	1,433,202
<b>Farm Capital</b>	<b>(\$'000)</b>				
Total Value	13,822,213	15,831,578	24,904,713	34,701,683	37,518,893
Land and Buildings	11,863,945	13,066,698	22,354,892	32,183,969	34,058,252
Machinery and Equipment	1,227,932	1,608,420	1,820,784	1,834,254	2,031,039
Livestock and Poultry	730,336	1,156,460	729,036	683,459	1,429,603
Average Capital Value per Farm (\$)	633,030	780,265	1,255,025	1,756,247	2,140,512
<b>Farm Operators, Farm Population and Farms</b>	<b>(Number)</b>				
Total Number of Farm Operators	32,950	30,320	29,870	29,925	26,430
Male Operators	21,265	19,340	18,955	19,010	16,515
Female Operators	11,685	10,980	10,910	10,915	9,925
Average Age of Farm Operators (yrs)	49.4	51.4	53.6	55.7	56.3
Total Farm Population <sup>4</sup>	68,770	61,370	60,765	64,650	57,965
Total Number of Farms	21,835	20,290	19,844	19,759	17,528
Family farms <sup>5</sup>	21,262	19,880	19,450	19,357	17,161
Non-family corporations	573	323	348	402	367
Farms with Sales:	<b>(Number)</b>				
Less than \$10,000	11,530	10,087	9,466	9,591	7,295
\$10,000 to \$49,999	5,372	5,362	5,231	5,217	4,724
\$50,000 to \$99,999	1,533	1,464	1,592	1,510	1,541
\$100,000 to \$249,999	1,589	1,509	1,536	1,381	1,594
\$250,000 and over	1,811	1,868	2,019	2,060	2,374

**Source:** Statistics Canada and Adapted from Statistics Canada. Census of Agriculture 1996, 2001, 2006, 2011 and 2016, unless otherwise specified.

<sup>1</sup> - Source: Statistics Canada. <http://www.statcan.gc.ca/tables-tableaux/sum-som/l01/cst01/phys01-eng.htm>. (Natural Resources Canada GeoAccess Division). Last modified February 01, 2005. Differences in Provincial Land Area may be a result of advances in technology and methodology.

<sup>2</sup> - Source: Agricultural Land Commission, 2016-2017 Annual Report, June 30 2017. Note that areas reported prior to April 1, 2018 are based on inclusions and exclusions to the initial ALR area at designation (established using the manual mapping method of Dot Matrix or electronic planimeter 1974) while areas reported after April 1, 2012 are calculated using Geographic Information Systems (GIS).

<sup>3</sup> - The 2006 Census count of B.C.'s total hectares of farm land were higher than in previous years due to better quality data on lands operated under a licence, permit or lease. As a result, direct comparison with census data prior to 2016 is not possible.

<sup>4</sup> - Farm population is defined as farm operators (individuals involved in the day-to-day management decisions in operating a census farm) as well as the individuals in their households. The farm population for Census 2016 was released November 27, 2018.

<sup>5</sup> - Family farms include sole proprietorships plus partnerships plus family corporation farm



## AGE OF B.C. FARM OPERATORS

	Under 35 years	35 to 54 years	55 years and over	Total
<b>British Columbia</b>	<b>1,825</b>	<b>9,140</b>	<b>15,460</b>	<b>26,430</b>
Per cent of Total	6.9%	34.6%	58.5%	100.0%
<b>Canada</b>	<b>24,850</b>	<b>98,840</b>	<b>148,250</b>	<b>271,935</b>
Per cent of Total	9.1%	36.3%	54.5%	100.0%

*Source: Statistics Canada and Adapted from Statistics Canada. Census of Agriculture 2016.*

## B.C. FARMLAND TENURE

2016	Hectares	% of Total
<b>Total farmland area<sup>1</sup></b>	<b>2,590,210</b>	<b>100.0%</b>
Total area owned	1,356,623	52.4%
Area leased from government	872,096	33.7%
Area rented or leased from others	360,477	13.9%
Area crop shared from others	24,839	1.0%
Other area used	27,059	1.0%
Areas used by others	50,883	2.0%

*Source: Statistics Canada. Census of Agriculture 2016.*

*1 - Total farm area is the difference between all land tenures and the "total area used by others."*

## NUMBER OF ORGANIC FARMS

<b>B.C. Farms Reporting Organic Products for Sale<sup>1</sup></b>	<b>2006</b>	<b>2011</b>	<b>2016</b>
Certified Organic Products	452	470	449
In Transition Organic Products	73	113	110
Uncertified Organic Products	2,767	na	na
<b>Total Farms Reporting Organic Products for Sale</b>	<b>3,232</b>	<b>569</b>	<b>550</b>

*Source: Statistics Canada. Census of Agriculture, 2006, 2011 and 2016.*

*1 - The total number of farms reporting organic products for sale does not equal the sum of the farms reporting in each category because a farm could be counted in more than one category.*

*na - not available.*

*Note: In Census 2006 producers were asked to identify commodities grown that were certified, in transition, or uncertified; and in Census 2011 and 2016, producers were asked to report only certified or in transition to be certified organic production.*



## NUMBER OF AGRICULTURE, FOOD AND SEAFOOD ESTABLISHMENTS BY INDUSTRY

Sector	Total 2018	Without Employees		Number of Establishments With Employees—By Employee Count						
		Revenues Under \$30,000 <sup>1</sup>	Revenues Above \$30,000 <sup>2</sup>	Total With Employees	1 to 4	5 to 9	10 to 19	20 to 49	50 to 99	Over 100
<b>Primary Production</b>										
Crop Production	12,562	6,443	4,047	2,072	1,116	447	240	169	61	39
Animal Production <sup>3</sup>	10,553	5,522	3,648	1,383	904	305	118	38	9	9
Support Activities for Agriculture	2,397	1,294	797	306	151	60	35	27	25	8
Fishing	4,833	2,289	2,275	269	194	41	17	14	2	1
<b>Subtotal</b>	<b>30,345</b>	<b>15,548</b>	<b>10,767</b>	<b>4,030</b>	<b>2,365</b>	<b>853</b>	<b>410</b>	<b>248</b>	<b>97</b>	<b>57</b>
<b>Manufacturing</b>										
Food Manufacturing	2,205	590	635	980	274	219	191	163	61	72
Beverage Manufacturing	704	60	217	427	125	98	77	94	19	14
Tobacco Manufacturing	8	5	2	1	0	1	0	0	0	0
<b>Subtotal</b>	<b>2,917</b>	<b>655</b>	<b>854</b>	<b>1,408</b>	<b>399</b>	<b>318</b>	<b>268</b>	<b>257</b>	<b>80</b>	<b>86</b>
<b>TOTAL</b>	<b>33,262</b>	<b>16203</b>	<b>11621</b>	<b>5,438</b>	<b>2764</b>	<b>1171</b>	<b>678</b>	<b>505</b>	<b>177</b>	<b>143</b>

**Source:** Statistics Canada Table 33-10-0105-01 – Canadian Business Counts, unless otherwise noted. (Accessed July 2, 2019.)

**1 – Source:** The data contained in this column has been adapted from a file produced by BC Stats from Statistics Canada's Business Register which includes business counts of all active B.C. locations without employees (including establishments of all revenue classes). From this was subtracted those establishments without employees and with business revenues greater than \$30,000 or that are incorporated (Stats Can table 33-10-0106-01). This does not constitute an endorsement by Statistics Canada of this product.

**2 – Source:** Statistics Canada table 33-10-0106-01 – Canadian Business Counts including all active B.C. locations without employees and with a business revenue greater than \$30,000 or that are incorporated.

**3 – Includes aquaculture.**



## NUMBER OF OTHER AGRICULTURE, FOOD AND SEAFOOD RELATED ESTABLISHMENTS BY INDUSTRY

Sector	Number of Establishments Without Employees			With Employees—By Employee Count						
	Total 2018	Revenues Under \$30,000 <sup>1</sup>	Revenues Above \$30,000 <sup>2</sup>	Total With Employees	1 to 4	5 to 9	10 to 19	20 to 49	50 to 99	Over 100
<b>Other Agriculture, Food and Seafood Product Manufacturing</b>										
Leather and Hide Tanning and Finishing	35	21	11	3	3	0	0	0	0	0
Pesticides, Fertilizers and Other Agricultural Chemicals	63	5	24	34	12	7	10	2	3	0
<b>Subtotal</b>	<b>98</b>	<b>26</b>	<b>35</b>	<b>37</b>	<b>15</b>	<b>7</b>	<b>10</b>	<b>2</b>	<b>3</b>	<b>0</b>
<b>Wholesalers, Distributors</b>										
Farm Product	526	187	194	145	72	30	23	14	3	3
Food	2,193	286	816	1,091	473	214	163	140	62	39
Beverage	374	79	146	149	59	42	20	19	7	2
Tobacco	36	8	11	17	4	3	3	2	2	3
Agricultural Supplies	237	49	80	108	42	28	14	17	6	1
<b>Subtotal</b>	<b>3,366</b>	<b>609</b>	<b>1,247</b>	<b>1,510</b>	<b>650</b>	<b>317</b>	<b>223</b>	<b>192</b>	<b>80</b>	<b>48</b>
<b>Retail</b>										
Food Stores	4,666	574	1,216	2,876	872	642	660	266	226	210
Beer, Wine and Liquor Stores	677	15	52	610	66	178	220	132	11	3
Florists	596	187	192	217	130	68	15	4	0	0
Restaurants and Food Services	15,694	1,769	3,285	10,640	1,941	2,447	3,024	2,288	714	226
Drinking Places	675	48	157	470	53	57	123	199	35	3
<b>Subtotal</b>	<b>22,308</b>	<b>2,593</b>	<b>4,902</b>	<b>14,813</b>	<b>3,062</b>	<b>3,392</b>	<b>4,042</b>	<b>2,889</b>	<b>986</b>	<b>442</b>
<b>Total</b>	<b>25,772</b>	<b>3,228</b>	<b>6,184</b>	<b>16,360</b>	<b>3,727</b>	<b>3,716</b>	<b>4,275</b>	<b>3,083</b>	<b>1,069</b>	<b>490</b>

**Source:** Statistics Canada Table 33-10-0105-01 – Canadian Business Counts, unless otherwise noted. (Accessed July 2, 2019)

**1** – Source: The data contained in this column has been adapted from a file produced by BC Stats from Statistics Canada's Business Register which includes business counts of all active B.C. locations without employees (including establishments of all revenue classes). From this was subtracted those establishments without employees and with business revenues greater than \$30,000 or that are incorporated (Stats Can table 33-10-0106-01). This does not constitute an endorsement by Statistics Canada of this product.

**2** – Source: Statistics Canada table 33-10-0106-01 – Canadian Business Counts including all active B.C. locations without employees and with a business revenue greater than \$30,000 or that are incorporated.

**3** – Includes aquaculture.



## B.C. AGRICULTURAL LAND MANAGEMENT PRACTICES

Land Usage Type	Farms Reporting	Hectares
<b>Total Number of Farms in British Columbia</b>	<b>17,528</b>	<b>2,590,210</b>
Weed Control on Summer Fallow Land, Chemical Only	34	614
Weed Control on Summer Fallow Land, Tillage Only	387	3,147
Weed Control on Summer Fallow Land, Tillage and Chemical Combination	77	1,576
Use of Herbicides	4,074	176,575
Use of Insecticides	2,164	42,930
Use of Fungicides	2,032	32,155
Use of Commercial Fertilizer	5,535	277,088
Use of Lime	1,220	13,185
Soil Conservation – Rotational Grazing	4,791	na
Soil Conservation – Winter Cover Crops	1,606	na
Soil Conservation – Plowing Down Green Crops	1,451	na
Soil Conservation – Windbreaks or Shelterbelts	4,812	na
Total Land Prepared for Seeding	6,676	252,573
Tillage Incorporating Most Crop Residue into Soil	3,542	90,393
Tillage Retaining Most Crop Residue on the Surface	1,417	69,110
No-Till or Zero-Till Seeding	2,237	93,070
Total Use of Irrigation	7,523	114,064

**Source:** Statistics Canada. *Census of Agriculture 2016*.

**na** – not available in Census 2016 data.

## FARMS USING COMPUTERS AND OTHER TECHNOLOGIES

Category	1991	1996	2001	2006	2011	2016
<b>Total Number of Farms in B.C.</b>	<b>19,225</b>	<b>21,835</b>	<b>20,290</b>	<b>19,844</b>	<b>19,759</b>	<b>17,528</b>
<b>Number of Farms Using Geospatial Technology<sup>1</sup></b>						
Use of GPS Technology	na	na	na	na	na	1,097
Use of GIS Mapping (e.g. Soil Mapping)	na	na	na	na	na	335
<b>Total</b>	<b>na</b>	<b>na</b>	<b>na</b>	<b>na</b>	<b>na</b>	<b>1,432</b>
<b>Number of Farms Using Automation Technology<sup>1</sup></b>						
Use of Robotic Milking	na	na	na	na	na	72
Use of Automated Environmental Controls for Animal Housing	na	na	na	na	na	588
Use of Automated Animal Feeding	na	na	na	na	na	650
Use of Automated Steering (Auto-Steer)	na	na	na	na	na	474
Use of Greenhouse Automation	na	na	na	na	na	318
Use of Other Technologies	na	na	na	na	na	146
<b>Total</b>	<b>na</b>	<b>na</b>	<b>na</b>	<b>na</b>	<b>na</b>	<b>2,248</b>
<b>Number of Farms Reporting Computers Used for Farm Management<sup>1</sup></b>						
Use of Smartphones/Tablets for Farm Management	na	na	na	na	na	6,014
Use of Computers/Laptops for Farm Management	2,745	5,144	8,146	9,096	11,208	8,835



## FARMS USING COMPUTERS AND OTHER TECHNOLOGIES, continued

Category	1991	1996	2001	2006	2011	2016
<b>Number of Farms Using Computers by Farm Type<sup>2</sup></b>						
Dairy Cattle and Milk Production	350	406	497	451	451	431
Beef Cattle Ranching and Farming, Including Feedlots	539	830	1,647	1,726	1,370	1,095
Hog and Pig Farming	67	84	85	60	53	50
Poultry and Egg Production	na	na	na	na	705	677
Poultry	98	214	312	281	na	na
Eggs	65	157	220	262	na	na
Sheep and Goat Farming	na	na	na	na	360	270
Oilseed and Grain Farming	72	110	109	107	152	156
Fruit and Tree Nut Farming	na	na	na	na	1,917	1,667
Tree Fruits	270	582	708	783	na	na
Berry and Grape (Includes Nuts) Farming	121	233	458	699	na	na
Field Vegetables, Melon and Potato Farming	93	222	267	370	546	592
Greenhouse, Mushroom, Nursery and Floriculture Production	na	na	na	na	1,256	867
Greenhouse Vegetable and Mushroom Farming	46	80	188	145	na	na
Floriculture and Nursery Farming	286	484	796	886	na	na
Other Animal and Crop Farming	626	1,462	2,251	2,675	na	1,361
Forage	112	280	608	651	na	na
Other Animal Production	na	na	na	na	2,468	1,669
Other Crop Farming	na	na	na	na	1,930	na
<b>Total</b>	<b>10,980</b>	<b>5,144</b>	<b>8,146</b>	<b>9,096</b>	<b>11,208</b>	<b>8,835</b>
<b>Number of Farms Using Computers, by Gross Receipts Class</b>						
Under \$10,000	940	2,073	3,238	3,609	4,600	2,879
\$10,000 to \$49,999	589	1,165	2,121	2,333	3,021	2,278
\$50,000 to \$99,999	239	397	654	843	977	837
\$100,000 to \$499,999	715	999	1,380	1,443	1,531	1,591
\$500,000 and over	262	510	753	868	1,079	1,250
<b>Total</b>	<b>2,745</b>	<b>5,144</b>	<b>8,146</b>	<b>9,096</b>	<b>11,208</b>	<b>8,835</b>
<b>Number of Farms Using Computers, by Region</b>						
Cariboo	166	350	664	791	927	700
Kootenay	132	295	515	619	732	564
Lower Mainland/Southwest	1,046	1,751	2,513	2,629	3,223	2,700
Nechako	102	171	377	401	492	369
North Coast	15	28	44	60	66	52
Peace River	182	341	590	660	798	604
Thompson/Okanagan	727	1,411	2,242	2,534	3,173	2,440
Vancouver Island/Coast	375	797	1,201	1,402	1,797	1,406
<b>Total</b>	<b>2,745</b>	<b>5,144</b>	<b>8,146</b>	<b>9,096</b>	<b>11,208</b>	<b>8,835</b>

**Source:** Statistics Canada and Adapted from Statistics Canada, Census of Agriculture 1991, 1996, 2001, 2006, 2011 and 2016 and data obtained through special request to Statistics Canada.

**1** - The 2016 Census of Agriculture introduced the first time farmers were asked to report their use of various other technologies used on farms, in addition to computers.

**2** - Farm type is based on the North American Industry Classification System (NAICS) farm typing categories. NAICS is revised periodically. The 2001 farm type data were derived using NAICS 1997, the 2006 farm type data were derived using NAICS 2002 and the 2011 farm type data were derived using NAICS 2007.

**na** - not available.

## NUMBER OF FARMS SELLING DIRECTLY TO CONSUMERS

B.C. Farms Reporting Direct Selling <sup>1</sup>		2016
<b>Selling Method Used</b>		
Farm gate sales, stands, kiosks, U-pick		5,047
Farmers' markets		1,244
Community Supported Agriculture (CSA)		249
Other methods		243
<b>Agricultural Products Sold</b>		
Unprocessed <sup>2</sup>		5,532
Value-added <sup>3</sup>		592
<b>Total Farms Selling Directly to Consumers</b>		<b>5,667</b>

**Source:** Statistics Canada and Adapted from Statistics Canada, Census of Agriculture 2016.

**1** - As a single farm can employ multiple selling methods and can sell both unprocessed and value-added products, the total number of farms selling directly to consumers is greater than the sum of the each selling method or agricultural product type category.

**2** - Unprocessed agricultural products include fruits, vegetables, meat cuts, poultry, eggs, maple syrup, honey, etc.

**3** - Value-added agricultural products include jellies, sausages, wine, cheese, etc.



# PRODUCTION AND PRICES

## GRAINS, OILSEEDS AND OTHER FIELD CROPS

Crop	Harvest Disposition <sup>1</sup>	2013	2014	2015	2016	2017	2018	Average 2013–2017	2018 vs. 2017 % Change	2018 vs. Average % Change
Barley	Seeded area ('000 hectares)	26.3	21.9	24.3	23.1	17.0	20.2	22.5	18.8%	-10.3%
	Harvested area ('000 hectares)	24.3	16.6	20.2	16.6	11.7	17.3	17.9	47.9%	-3.2%
	Average yield (tonnes/ha)	3.5	2.6	3.3	3.5	3.2	3.5	3.2	8.9%	8.3%
	Production ('000 tonnes)	85.8	42.7	67.5	58.8	37.6	60.4	58.5	60.6%	3.3%
Canola	Seeded area ('000 hectares)	40.5	42.5	36.4	38.4	45.3	55.4	40.6	22.3%	36.4%
	Harvested area ('000 hectares)	40.5	42.1	36.4	34.8	44.5	54.3	39.7	22.0%	36.9%
	Average yield (tonnes/ha)	2.2	1.7	1.9	2.3	2.0	2.3	2.0	14.1%	12.9%
	Production ('000 tonnes)	88.7	71.9	70.8	81.6	90.6	123.9	80.7	36.8%	53.5%
Corn, fodder	Seeded area ('000 hectares)	16.2	16.2	14.2	17.1	13.4	20.6	15.4	53.7%	33.6%
	Harvested area ('000 hectares)	16.2	12.9	14.2	16.2	10.5	18.2	14.0	73.3%	30.0%
	Average yield (tonnes/ha)	54.6	49.2	40.3	51.8	44.9	45.9	48.2	2.2%	-4.6%
	Production ('000 tonnes)	884.5	635.0	571.5	839.1	471.7	836.9	680.4	77.4%	23.0%
Dry Peas <sup>2</sup>	Seeded area ('000 hectares)	na	8.1	12.1	19.8	25.5	28.3	16.4	11.0%	72.8%
	Harvested area ('000 hectares)	na	8.1	12.1	18.6	25.1	26.0	16.0	3.6%	62.8%
	Average yield (tonnes/ha)	na	2.3	2.4	2.9	2.7	2.9	2.6	7.4%	12.6%
	Production ('000 tonnes)	na	18.8	29.5	54.4	66.6	74.4	42.3	11.7%	75.8%
Mixed Grains	Seeded area ('000 hectares)	2.4	2.4	4.0	4.0	4.9	3.2	3.5	-34.7%	-9.6%
	Harvested area ('000 hectares)	0.4	0.8	na	0.4	0.8	2.2	0.6	175.0%	266.7%
	Average yield (tonnes/ha)	2.8	2.8	na	3.5	na	3.8	3.0	na	na
	Production ('000 tonnes)	1.1	2.2	na	1.4	na	8.3	1.6	na	na
Oats	Seeded area ('000 hectares)	32.4	27.5	30.4	27.5	28.3	30.4	29.2	7.4%	4.0%
	Harvested area ('000 hectares)	28.3	20.2	20.2	15.0	14.7	22.5	19.7	53.1%	14.3%
	Average yield (tonnes/ha)	3.0	2.6	2.9	3.8	3.4	3.2	3.1	-4.6%	3.2%
	Production ('000 tonnes)	85.9	51.8	58.0	56.3	50.1	72.9	60.4	45.5%	20.7%
Spring Wheat	Seeded area ('000 hectares)	37.6	37.6	40.4	40.9	17.8	24.1	34.9	35.4%	-30.9%
	Harvested area ('000 hectares)	37.6	37.6	39.6	36.0	17.0	22.9	33.6	34.7%	-31.8%
	Average yield (tonnes/ha)	4.0	2.9	3.4	3.9	3.6	3.8	3.6	5.6%	6.7%
	Production ('000 tonnes)	151.8	109.4	134.9	139.6	61.0	87.1	119.3	42.8%	-27.0%
Summerfallow	Seeded area ('000 hectares)	18.2	20.2	16.2	5.3	32.4	18.2	18.5	-43.8%	-1.4%
Tame Hay	Seeded area ('000 hectares)	372.3	374.3	376.4	364.1	356.1	351.7	368.6	-1.2%	-4.6%
	Harvested area ('000 hectares)	353.3	346.0	298.7	335.9	339.9	324.0	334.8	-4.7%	-3.2%
	Average yield (tonnes/ha)	5.4	3.9	4.1	4.9	4.7	3.4	4.6	-26.4%	-25.4%
	Production ('000 tonnes)	1,923.2	1,354.4	1,237.4	1,628.4	1,583.0	1,112.4	1,545.3	-29.7%	-28.0%

Source: Statistics Canada and Adapted from Statistics Canada. 32-10-0359-01, accessed July 8, 2019.

1 - Any crops harvested as forage or green silage are not included in the reported crop production.

2 - From 2007 to 2013, the estimated production of Dry Peas was not released by Statistics Canada.

na - not available.

## SELECTED GRAINS AND OILSEED PRICES

Crop	Annual Average Price <sup>1</sup> (\$/Tonne)						Average 2013–2017	2018 vs. 2016 % Change	2018 vs. Average % Change
	2013	2014	2015	2016	2017	2018			
<b>Wheat excluding Durum<sup>2</sup></b>	<b>271.34</b>	<b>208.11</b>	<b>222.62</b>	<b>229.61</b>	<b>239.88</b>	<b>253.34</b>	<b>234.31</b>	<b>5.6%</b>	<b>8.1%</b>
Wheat excluding Durum, Milling	272.11	210.13	223.35	230.83	243.79	<b>254.91</b>	236.04	4.6%	8.0%
Wheat excluding Durum, Other	209.95	175.37	195.99	189.64	166.60	<b>203.87</b>	187.51	22.4%	8.7%
<b>Oats</b>	<b>217.39</b>	<b>170.13</b>	<b>193.01</b>	<b>184.30</b>	<b>192.56</b>	<b>197.26</b>	<b>191.48</b>	<b>2.4%</b>	<b>3.0%</b>
<b>Non-board Barley<sup>3</sup></b>	<b>239.08</b>	<b>173.54</b>	<b>218.80</b>	<b>215.96</b>	<b>193.91</b>	<b>213.36</b>	<b>208.26</b>	<b>10.0%</b>	<b>2.5%</b>
Barley for animal feed	207.13	152.13	186.42	165.91	154.53	<b>202.53</b>	173.22	31.1%	16.9%
Barley for malt and other human consumption	277.29	212.36	254.53	259.61	231.83	<b>225.97</b>	247.12	-2.5%	-8.6%
<b>Canola (including rapeseed)</b>	<b>574.62</b>	<b>441.92</b>	<b>458.45</b>	<b>472.28</b>	<b>497.67</b>	<b>496.42</b>	<b>488.99</b>	<b>-0.3%</b>	<b>1.5%</b>
<b>Rye</b>	<b>246.32</b>	<b>na</b>	<b>na</b>	<b>na</b>	<b>168.83</b>	<b>205.84</b>	<b>207.58</b>	<b>na</b>	<b>-0.8%</b>

*Source:* Adapted from Statistics Canada. Table: 32-10-0077-01 (formerly CANSIM 002-0043), accessed July 8, 2019.

**1** – Annual averages are calculated based on the monthly data available for the twelve month calendar period. Annual average calculations may include less than 12 months of monthly data.

**2** – Wheat (except durum wheat) prices include the weighted average prices of milling and other wheat (except durum wheat). “Wheat (except durum wheat), other” includes wheat used for animal feed, as well as for the production of ethanol.

**3** – Barley prices include the weighted average prices of barley for animal feed and barley for malt and other human consumption.

*na* – not available.

**Note:** Starting in crop-year 2012–2013, following the enactment of Bill C-18, the Canadian Wheat Board is no longer the sole purchaser of wheat and barley for domestic human consumption and export. Producers now have the option of selling their grain directly to buyers.

**Note:** Statistics Canada terminated its estimates on Canadian Wheat Board prices for wheat and for barley, effective with the release of the 2017 data.

## FIELD VEGETABLES

Crop Type	Estimates							Average 2013–2017	2018 vs. 2017 % Change	2017 vs. Average % Change
		2013	2014	2015	2016	2017	2018			
Asparagus	<b>Farm Gate Value (\$'000)</b>	<b>F</b>	<b>737</b>	<b>810</b>	<b>755</b>	<b>816</b>	<b>857</b>	<b>780</b>	<b>5.0%</b>	<b>9.9%</b>
	Planted Area (hectares)	F	115	115	114	113	81	114	-28.3%	-29.1%
	Harvested Area (hectares)	F	93	91	89	93	72	88	-22.6%	-17.8%
	Marketed Production (metric tonnes)	F	156	170	157	153	150	159	-2.0%	-5.7%
	Yield (Kg/ha)	F	1,700	1,900	1,800	1,600	1,852	1,750	15.7%	5.8%
	Price (\$/kg)	na	4.72	4.76	4.81	5.33	5.71	4.91	7.1%	16.4%
	Farm Gate Value per Harvested Hectare (\$/ha)	na	7,925	8,901	8,483	8,774	11,903	8,521	35.7%	39.7%
Beans	<b>Farm Gate Value (\$'000)</b>	<b>3,095</b>	<b>2,859</b>	<b>3,137</b>	<b>3,494</b>	<b>2,666</b>	<b>3,116</b>	<b>3,014</b>	<b>25.3%</b>	<b>3.4%</b>
	Planted Area (hectares)	645	594	541	490	384	384	531	0.0%	-27.7%
	Harvested Area (hectares)	628	531	524	489	344	372	503	8.1%	-26.1%
	Marketed Production (metric tonnes)	4,479	4,100	4,110	3,698	2,151	2,508	3,708	16.6%	-32.4%
	Yield (Kg/ha)	7,200	7,700	7,800	7,600	6,300	6,531	7,320	3.7%	-10.8%
	Price (\$/kg)	0.69	0.70	0.76	0.94	1.24	1.24	0.85	7.5%	46.1%
	Farm Gate Value per Harvested Hectare (\$/ha)	4,928	5,384	5,987	7,145	7,230	8,376	6,135	15.9%	36.5%
Beets	<b>Farm Gate Value (\$'000)</b>	<b>3,980</b>	<b>2,909</b>	<b>4,024</b>	<b>3,973</b>	<b>4,576</b>	<b>4,934</b>	<b>3,892</b>	<b>7.8%</b>	<b>26.8%</b>
	Planted Area (hectares)	179	189	199	209	204	187	196	-8.3%	-4.6%
	Harvested Area (hectares)	178	183	194	203	199	178	191	-10.6%	-7.0%
	Marketed Production (metric tonnes)	4,352	4,023	5,242	4,602	4,386	4,388	4,521	0.0%	-2.9%
	Yield (Kg/ha)	26,000	22,000	27,000	22,700	23,700	23,465	24,280	-1.0%	-3.4%
	Price (\$/kg)	0.91	0.72	0.77	0.86	1.04	1.12	0.86	7.8%	30.4%
	Farm Gate Value per Harvested Hectare (\$/ha)	22,360	15,896	20,742	19,567	22,995	27,719	20,312	20.5%	36.5%



## FIELD VEGETABLES, continued

Crop Type	Estimates	2013	2014	2015	2016	2017	2018	Average 2013–2017	2018 vs. 2017 % Change	2017 vs. Average % Change
Broccoli	<b>Farm Gate Value (\$'000)</b>	<b>2,541</b>	<b>F</b>	<b>F</b>	<b>x</b>	<b>3,415</b>	<b>x</b>	<b>2,978</b>	<b>na</b>	<b>na</b>
	Planted Area (hectares)	310	297	285	x	247	243	285	-1.6%	-14.7%
	Harvested Area (hectares)	249	272	285	x	210	219	254	4.3%	-13.8%
	Marketed Production (metric tonnes)	1,740	1,500	F	x	1,552	1,937	6,097	24.8%	-68.2%
	Yield (Kg/ha)	7,000	5,500	F	x	7,400	7,971	6,633	7.7%	20.2%
	Price (\$/kg)	1.46	na	na	na	2.20	na	1.83	na	na
	Farm Gate Value per Harvested Hectare (\$/ha)	10,205	na	na	na	16,262	na	11,012	na	na
Brussels Sprouts	<b>Farm Gate Value (\$'000)</b>	<b>1,845</b>	<b>2,698</b>	<b>2,928</b>	<b>2,945</b>	<b>4,456</b>	<b>4,616</b>	<b>2,974</b>	<b>3.6%</b>	<b>55.2%</b>
	Planted Area (hectares)	256	229	202	175	172	176	207	2.3%	-14.9%
	Harvested Area (hectares)	236	229	199	155	172	162	198	-5.8%	-18.3%
	Marketed Production (metric tonnes)	1,750	2,730	2,642	1,778	2,160	2,013	2,212	-6.8%	-9.0%
	Yield (Kg/ha)	7,500	11,900	13,300	13,100	12,600	11,438	11,680	-9.2%	-2.1%
	Price (\$/kg)	1.05	0.99	1.11	1.66	2.06	2.29	1.37	11.2%	66.9%
	Farm Gate Value per Harvested Hectare (\$/ha)	7,818	11,782	14,714	19,000	25,907	28,494	15,844	10.0%	79.8%
Cabbage – Total <sup>1</sup>	<b>Farm Gate Value (\$'000)</b>	<b>7,216</b>	<b>6,935</b>	<b>6,092</b>	<b>7,120</b>	<b>7,614</b>	<b>8,528</b>	<b>7,050</b>	<b>8.2%</b>	<b>21.0%</b>
	Planted Area (hectares)	407	411	384	416	415	506	407	21.9%	24.4%
	Harvested Area (hectares)	382	380	348	398	393	489	380	24.4%	28.6%
	Marketed Production (metric tonnes)	8,657	7,227	7,234	8,834	8,694	9,164	8,129	5.4%	12.7%
	Yield (Kg/ha)	23,000	19,800	20,800	22,200	22,100	18,111	21,580	-18.1%	-16.1%
	Price (\$/kg)	0.83	0.96	0.84	0.81	0.88	0.93	0.87	2.6%	7.0%
	Farm Gate Value per Harvested Hectare (\$/ha)	18,890	18,250	17,506	17,889	20,064	17,440	18,520	-13.1%	-5.8%
Carrots – Total <sup>2</sup>	<b>Farm Gate Value (\$'000)</b>	<b>6,796</b>	<b>5,308</b>	<b>6,478</b>	<b>6,053</b>	<b>9,402</b>	<b>8,733</b>	<b>6,669</b>	<b>0.3%</b>	<b>31.0%</b>
	Planted Area (hectares)	310	317	324	331	361	381	329	5.5%	15.9%
	Harvested Area (hectares)	272	F	324	321	357	364	319	2.0%	14.3%
	Marketed Production (metric tonnes)	F	F	7,946	F	F	8,372	7,946	na	5.4%
	Yield (Kg/ha)	F	F	24,500	F	24,900	21,974	24,700	-11.8%	-11.0%
	Price (\$/kg)	na	na	0.82	na	na	1.04	0.82	na	28.8%
	Farm Gate Value per Harvested Hectare (\$/ha)	24,985	na	19,994	18,857	24,392	23,992	22,057	-5.0%	8.8%
Cauliflower	<b>Farm Gate Value (\$'000)</b>	<b>585</b>	<b>932</b>	<b>1,582</b>	<b>1,590</b>	<b>918</b>	<b>1,386</b>	<b>1,121</b>	<b>51.0%</b>	<b>23.6%</b>
	Planted Area (hectares)	81	85	89	94	87	89	87	2.3%	2.1%
	Harvested Area (hectares)	59	71	74	74	85	85	73	0.0%	17.1%
	Marketed Production (metric tonnes)	548	739	782	894	432	654	664	51.4%	-1.5%
	Yield (Kg/ha)	9,800	10,400	10,600	12,100	5,100	7,348	9,600	44.1%	-23.5%
	Price (\$/kg)	1.07	1.26	2.02	1.78	2.13	2.12	1.75	-0.3%	21.1%
	Farm Gate Value per Harvested Hectare (\$/ha)	9,915	13,127	21,378	21,486	10,800	16,306	15,341	51.0%	6.3%
Celery	<b>Farm Gate Value (\$'000)</b>	<b>x</b>	<b>254</b>	<b>181</b>	<b>F</b>	<b>255</b>	<b>246</b>	<b>230</b>	<b>-3.5%</b>	<b>7.0%</b>
	Planted Area (hectares)	x	13	14	15	13	12	14	-7.7%	-12.7%
	Harvested Area (hectares)	x	9	11	12	11	10	11	-9.1%	-7.0%
	Marketed Production (metric tonnes)	x	157	F	F	100	95	129	-5.0%	-26.1%
	Yield (Kg/ha)	x	17,300	F	F	9,500	7,917	13,200	-13.0%	-40.0%
	Price (\$/kg)	na	1.62	na	na	2.55	2.59	2.09	1.5%	24.2%
	Farm Gate Value per Harvested Hectare (\$/ha)	na	28,222	16,455	na	23,182	24,600	17,361	6.1%	41.7%

## FIELD VEGETABLES, continued

Crop Type	Estimates	2013	2014	2015	2016	2017	2018	Average 2013–2017	2018 vs. 2017 % Change	2017 vs. Average % Change
Corn, Sweet	<b>Farm Gate Value (\$'000)</b>	<b>7,620</b>	<b>9,617</b>	<b>8,835</b>	<b>9,847</b>	<b>7,381</b>	<b>8,455</b>	<b>8,662</b>	<b>14.4%</b>	<b>-2.4%</b>
	Planted Area (hectares)	1,207	1,160	1,113	1,066	1,020	1,012	1,113	-0.8%	-9.1%
	Harvested Area (hectares)	1,207	1,160	982	1,066	924	939	1,068	1.6%	-12.1%
	Marketed Production (metric tonnes)	8,699	8,953	7,433	8,815	6,035	6,577	7,987	9.0%	-17.7%
	Yield (Kg/ha)	7,200	7,700	7,600	8,300	6,500	6,499	7,480	-1.5%	-13.1%
	Price (\$/kg)	0.88	1.07	1.19	1.12	1.22	1.29	1.10	5.0%	17.3%
	Farm Gate Value per Harvested Hectare (\$/ha)	6,313	8,291	8,997	9,237	7,999	9,004	8,167	12.6%	10.2%
Cucumbers & Gherkins	<b>Farm Gate Value (\$'000)</b>	<b>1,676</b>	<b>2,292</b>	<b>2,481</b>	<b>2,329</b>	<b>2,207</b>	<b>F</b>	<b>2,197</b>	<b>na</b>	<b>na</b>
	Planted Area (hectares)	109	111	114	116	85	87	107	2.4%	-18.7%
	Harvested Area (hectares)	104	101	107	107	83	83	100	0.0%	-17.3%
	Marketed Production (metric tonnes)	981	1,929	F	1,854	1,642	F	1,602	na	na
	Yield (Kg/ha)	9,400	19,100	F	17,300	19,800	na	16,400	na	na
	Price (\$/kg)	1.71	1.19	na	1.26	1.34	na	1.38	na	na
	Farm Gate Value per Harvested Hectare (\$/ha)	16,115	22,693	23,187	21,766	26,590	na	22,070	na	na
Eggplant <sup>3</sup>	<b>Farm Gate Value (\$'000)</b>	<b>na</b>	<b>na</b>	<b>na</b>	<b>na</b>	<b>na</b>	<b>272</b>	<b>na</b>	<b>na</b>	<b>na</b>
	Planted Area (hectares)	na	na	na	na	na	8	na	na	na
	Harvested Area (hectares)	na	na	na	na	na	7	na	na	na
	Marketed Production (metric tonnes)	na	na	na	na	na	77	na	na	na
	Yield (Kg/ha)	na	na	na	na	na	9,625	na	na	na
	Price (\$/kg)	na	na	na	na	na	4	na	na	na
	Farm Gate Value per Harvested Hectare (\$/ha)	na	na	na	na	na	38,857	na	na	na
Garlic	<b>Farm Gate Value (\$'000)</b>	<b>4,034</b>	<b>4,516</b>	<b>5,600</b>	<b>4,935</b>	<b>3,044</b>	<b>2,668</b>	<b>4,426</b>	<b>-12.4%</b>	<b>-39.7%</b>
	Planted Area (hectares)	134	142	148	156	107	98	137	-8.4%	-28.7%
	Harvested Area (hectares)	127	134	142	146	93	89	128	-4.3%	-30.7%
	Marketed Production (metric tonnes)	263	373	383	337	193	167	310	-13.5%	-46.1%
	Yield (Kg/ha)	2,100	2,800	2,700	2,300	2,600	1,704	2,500	-34.5%	-31.8%
	Price (\$/kg)	15.34	12.11	14.62	14.64	15.77	15.98	14.50	1.3%	10.2%
	Farm Gate Value per Harvested Hectare (\$/ha)	31,764	33,701	39,437	33,801	32,731	29,978	34,287	-8.4%	-12.6%
Other Fine Herbs	<b>Farm gate value (dollars x 1,000)</b>	<b>na</b>	<b>na</b>	<b>na</b>	<b>na</b>	<b>na</b>	<b>1,038</b>	<b>na</b>	<b>na</b>	<b>na</b>
	Area planted (hectares)	na	na	na	na	na	33	na	na	na
	Area harvested (hectares)	na	na	na	na	na	28	na	na	na
	Marketed production (metric tonnes)	na	na	na	na	na	275	na	na	na
	Yield (Kg/ha)	na	na	na	na	na	8,333	na	na	na
	Price (\$/kg)	na	na	na	na	na	4	na	na	na
	Farm Gate Value per Harvested hectare (\$/ha)	na	na	na	na	na	37,071	na	na	na
Leeks	<b>Farm Gate Value (\$'000)</b>	<b>508</b>	<b>F</b>	<b>224</b>	<b>555</b>	<b>872</b>	<b>734</b>	<b>540</b>	<b>-15.8%</b>	<b>36.0%</b>
	Planted Area (hectares)	17	14	16	24	34	34	21	0.0%	61.9%
	Harvested Area (hectares)	16	9	16	24	28	28	19	0.0%	50.5%
	Marketed Production (metric tonnes)	216	158	101	F	447	340	231	-23.9%	47.5%
	Yield (Kg/ha)	15,900	19,800	6,200	F	16,200	10,000	14,475	-37.5%	-30.9%
	Price (\$/kg)	2.35	na	2.22	na	1.95	2.16	2.17	10.7%	-0.7%
	Farm Gate Value per Harvested Hectare (\$/ha)	31,750	na	14,000	23,125	31,143	26,214	25,004	-15.8%	4.8%

## FIELD VEGETABLES, continued

Crop Type	Estimates	2013	2014	2015	2016	2017	2018	Average 2013–2017	2018 vs. 2017 % Change	2017 vs. Average % Change
Lettuce - Total*	<b>Farm Gate Value (\$'000)</b>	<b>6,430</b>	<b>6,324</b>	<b>6,828</b>	<b>6,363</b>	<b>7,707</b>	<b>8,125</b>	<b>6,865</b>	<b>-2.7%</b>	<b>18.4%</b>
	Planted Area (hectares)	242	245	247	249	222	221	241	-0.5%	-8.3%
	Harvested Area (hectares)	230	225	247	240	221	215	233	-2.7%	-7.6%
	Marketed Production (metric tonnes)	5,932	5,918	5,469	5,829	7,464	6,956	6,122	-6.8%	13.6%
	Yield (Kg/ha)	25,800	26,400	22,200	24,300	33,800	31,475	26,500	-6.9%	18.8%
	Price (\$/kg)	1.08	1.07	1.25	1.09	1.03	1.17	1.12	4.4%	4.0%
	Farm Gate Value per Harvested Hectare (\$/ha)	27,957	28,107	27,644	26,638	37,787	37,791	29,626	0.0%	27.6%
Other Melons	<b>Farm Gate Value (\$'000)</b>	<b>743</b>	<b>F</b>	<b>F</b>	<b>1,653</b>	<b>F</b>	<b>x</b>	<b>1,198</b>	<b>na</b>	<b>na</b>
	Planted Area (hectares)	30	F	F	71	65	57	55	-12.3%	3.0%
	Harvested Area (hectares)	30	F	F	70	64	55	55	-14.1%	0.6%
	Marketed Production (metric tonnes)	1,002	F	F	3,167	F	3,483	2,809	6.5%	24.0%
	Yield (Kg/ha)	33,000	F	F	45,500	F	61,105	43,200	19.6%	41.4%
	Price (\$/kg)	0.37	na	na	0.52	na	na	0.45	na	na
	Farm Gate Value per Harvested Hectare (\$/ha)	24,767	na	na	23,614	na	na	24,025	na	na
Onions, Dry	<b>Farm Gate Value (\$'000)</b>	<b>1,450</b>	<b>F</b>	<b>F</b>	<b>2,183</b>	<b>1,191</b>	<b>1,920</b>	<b>1,608</b>	<b>61.2%</b>	<b>19.4%</b>
	Planted Area (hectares)	F	130	F	F	123	134	127	8.9%	5.9%
	Harvested Area (hectares)	F	F	F	F	122	132	122	8.2%	8.2%
	Marketed Production (metric tonnes)	F	F	F	F	1,788	3,092	1,788	72.9%	72.9%
	Yield (Kg/ha)	F	F	F	F	F	23,075	14,700	57.0%	57.0%
	Price (\$/kg)	na	na	na	na	na	0.62	0.67	-6.8%	-7.3%
	Farm Gate Value per Harvested Hectare (\$/ha)	na	na	na	na	9,762	14,545	9,762	49.0%	49.0%
Onions, Green and Shallots	<b>Farm Gate Value (\$'000)</b>	<b>2,119</b>	<b>2,165</b>	<b>2,515</b>	<b>2,067</b>	<b>1,529</b>	<b>1,955</b>	<b>2,079</b>	<b>27.9%</b>	<b>-6.0%</b>
	Planted Area (hectares)	53	52	51	51	42	39	50	-7.1%	-21.7%
	Harvested Area (hectares)	53	45	47	43	40	34	46	-15.0%	-25.4%
	Marketed Production (metric tonnes)	865	498	571	519	1,053	747	610	24.7%	22.4%
	Yield (Kg/ha)	16,200	11,000	12,400	12,100	26,300	19,154	13,340	27.7%	43.6%
	Price (\$/kg)	2.45	4.35	4.40	3.98	1.45	2.62	3.55	2.5%	-26.2%
	Farm Gate Value per Harvested Hectare (\$/ha)	39,981	48,111	53,511	48,070	38,225	57,500	45,580	50.4%	26.2%
Parsley	<b>Farm Gate Value (\$'000)</b>	<b>290</b>	<b>441</b>	<b>368</b>	<b>375</b>	<b>988</b>	<b>546</b>	<b>492</b>	<b>-44.7%</b>	<b>10.9%</b>
	Planted Area (hectares)	13	8	9	9	17	10	11	-41.2%	-10.7%
	Harvested Area (hectares)	12	8	9	8	15	10	10	-33.3%	-3.8%
	Marketed Production (metric tonnes)	104	195	166	139	388	193	198	-50.3%	-2.7%
	Yield (Kg/ha)	8,600	24,200	18,600	17,100	25,900	19,300	18,880	-25.5%	2.2%
	Price (\$/kg)	2.79	2.26	2.22	2.70	2.55	2.83	2.50	11.1%	13.1%
	Farm Gate Value per Harvested Hectare (\$/ha)	24,167	55,125	40,889	46,875	65,867	54,600	46,584	-17.1%	17.2%
Parsnips	<b>Farm Gate Value (\$'000)</b>	<b>871</b>	<b>661</b>	<b>800</b>	<b>481</b>	<b>375</b>	<b>235</b>	<b>638</b>	<b>-37.3%</b>	<b>-63.1%</b>
	Planted Area (hectares)	16	F	24	20	21	7	20	-66.7%	-65.4%
	Harvested Area (hectares)	16	F	24	20	21	6	20	-71.4%	-70.4%
	Marketed Production (metric tonnes)	395	306	369	217	170	101	291	-40.6%	-65.3%
	Yield (Kg/ha)	25,000	F	15,200	10,700	8,200	14,429	14,750	78.1%	-2.2%
	Price (\$/kg)	2.21	2.16	2.17	2.22	2.21	2.33	2.19	5.5%	6.2%
	Farm Gate Value per Harvested Hectare (\$/ha)	54,438	na	33,333	24,050	17,857	39,167	32,420	119.3%	20.8%

## FIELD VEGETABLES, continued

Crop Type	Estimates	2013	2014	2015	2016	2017	2018	Average 2013–2017	2018 vs. 2017 % Change	2017 vs. Average % Change
Peas, Green	<b>Farm Gate Value (\$'000)</b>	<b>1,657</b>	<b>1,554</b>	<b>2,146</b>	<b>2,304</b>	<b>2,128</b>	<b>2,114</b>	<b>1,853</b>	<b>31.6%</b>	<b>14.1%</b>
	Planted Area (hectares)	390	429	468	486	323	500	419	54.8%	19.3%
	Harvested Area (hectares)	374	418	462	486	323	463	413	43.3%	12.2%
	Marketed Production (metric tonnes)	2,333	2,235	2,576	2,542	1,522	1,834	2,242	20.5%	-18.2%
	Yield (Kg/ha)	6,200	5,700	5,600	5,200	4,700	3,668	5,480	-22.0%	-33.1%
	Price (\$/kg)	0.71	0.70	0.83	0.91	1.40	1.15	0.84	9.2%	37.2%
	Farm Gate Value per Harvested Hectare (\$/ha)	4,430	3,718	4,645	4,741	6,588	4,566	4,824	-30.7%	-5.3%
Peppers	<b>Farm Gate Value (\$'000)</b>	<b>F</b>	<b>3,481</b>	<b>3,145</b>	<b>4,894</b>	<b>3,689</b>	<b>4,623</b>	<b>3,802</b>	<b>25.3%</b>	<b>21.6%</b>
	Planted Area (hectares)	150	151	151	151	156	158	152	1.3%	4.1%
	Harvested Area (hectares)	142	149	151	149	154	157	149	1.9%	5.4%
	Marketed Production (metric tonnes)	2,304	2,932	2,702	3,114	2,121	2,618	2,635	23.4%	-0.6%
	Yield (Kg/ha)	16,400	20,000	17,900	21,000	13,800	16,570	17,820	20.1%	-7.0%
	Price (\$/kg)	na	1.19	1.16	1.57	1.74	1.77	1.42	1.5%	24.7%
	Farm Gate Value per Harvested Hectare (\$/ha)	na	23,362	20,828	32,846	23,955	29,446	25,248	22.9%	16.6%
Potatoes <sup>5,6</sup>	<b>Farm Cash Receipts (\$'000)</b>	<b>34,077</b>	<b>30,673</b>	<b>37,566</b>	<b>47,574</b>	<b>47,881</b>	<b>49,544</b>	<b>39,554</b>	<b>3.5%</b>	<b>25.3%</b>
	Planted Area (hectares)	2,509	2,384	2,469	2,934	2,630	2,671	2,585	1.5%	3.3%
	Harvested Area (hectares)	2,469	2,347	2,456	2,833	2,590	2,671	2,539	3.1%	5.2%
	Marketed Production (metric tonnes)	31,384	30,205	30,708	35,307	31,944	35,663	31,910	11.6%	11.76%
	Yield (Kg/ha)	77,474	70,896	75,432	100,017	82,735	95,254	81,311	15.1%	17.1%
	Price <sup>6</sup> (\$/kg)	0.44	0.43	0.50	0.48	0.58	0.52	0.48	-10.1%	7.2%
	Farm Cash Receipts per Harvested Hectare (\$/ha)	13,804	13,068	15,293	16,794	18,487	18,549	15,489	0.3%	19.8%
Pumpkins	<b>Farm Gate Value (\$'000)</b>	<b>4,245</b>	<b>4,725</b>	<b>5,053</b>	<b>4,923</b>	<b>6,015</b>	<b>5,053</b>	<b>4,992</b>	<b>-16.0%</b>	<b>1.2%</b>
	Planted Area (hectares)	388	397	407	416	378	344	397	-9.0%	-13.4%
	Harvested Area (hectares)	368	365	372	374	353	341	366	-3.4%	-6.9%
	Marketed Production (metric tonnes)	11,065	12,579	10,420	11,029	11,689	9,956	11,356	-14.8%	-12.3%
	Yield (Kg/ha)	30,800	35,100	28,000	29,500	33,300	28,942	31,340	-13.1%	-7.7%
	Price (\$/kg)	0.38	0.38	0.48	0.45	0.51	0.51	0.44	-1.4%	15.1%
	Farm Gate Value per Harvested Hectare (\$/ha)	11,535	12,945	13,583	13,163	17,040	14,818	13,653	-13.0%	8.5%
Radishes <sup>7</sup>	<b>Farm Gate Value (\$'000)</b>	<b>723</b>	<b>1,075</b>	<b>1,174</b>	<b>939</b>	<b>1,124</b>	<b>1,341</b>	<b>1,007</b>	<b>19.3%</b>	<b>33.2%</b>
	Planted Area (hectares)	51	55	59	64	45	50	55	11.1%	-8.8%
	Harvested Area (hectares)	48	48	59	64	42	45	52	7.1%	-13.8%
	Marketed Production (metric tonnes)	611	933	983	761	842	723	826	-14.1%	-12.5%
	Yield (Kg/ha)	12,700	19,500	16,500	12,000	19,800	14,460	17,200	-28.1%	-15.9%
	Price (\$/kg)	1.18	1.15	1.19	1.23	1.33	1.85	1.22	38.9%	52.1%
	Farm Gate Value per Harvested Hectare (\$/ha)	15,063	22,396	19,898	14,672	26,762	29,800	19,758	11.4%	50.8%
Rhubarb	<b>Farm Gate Value (\$'000)</b>	<b>x</b>	<b>739</b>	<b>F</b>	<b>x</b>	<b>2,138</b>	<b>x</b>	<b>1,439</b>	<b>na</b>	<b>na</b>
	Planted Area (hectares)	x	90	F	x	149	95	120	-36.2%	-20.5%
	Harvested Area (hectares)	x	66	F	x	115	83	91	-27.8%	-8.3%
	Marketed Production (metric tonnes)	x	650	F	x	1,744	892	1,197	-48.9%	-25.5%
	Yield (Kg/ha)	x	F	F	x	15,200	9,389	15,200	-38.2%	-38.2%
	Price (\$/kg)	na	1.14	na	na	1.23	na	1.19	na	na
	Farm Gate Value per Harvested Hectare (\$/ha)	na	11,197	na	na	18,591	na	8,211	na	na



## FIELD VEGETABLES, continued

Crop Type	Estimates	2013	2014	2015	2016	2017	2018	Average 2013–2017	2018 vs. 2017 % Change	2017 vs. Average % Change
Rutabagas & Turnips	<b>Farm Gate Value (\$'000)</b>	<b>1,962</b>	<b>1,775</b>	<b>1,928</b>	<b>1,452</b>	<b>F</b>	<b>2,004</b>	<b>1,779</b>	<b>na</b>	<b>12.6%</b>
	Planted Area (hectares)	99	90	81	72	72	61	83	-15.3%	-26.3%
	Harvested Area (hectares)	99	84	81	63	68	60	79	-11.8%	-24.1%
	Marketed Production (metric tonnes)	2,555	F	F	1,412	2,097	1,623	2,021	-22.6%	-19.7%
	Yield (Kg/ha)	25,800	30,000	F	22,400	30,800	26,607	27,250	-13.6%	-2.4%
	Price (\$/kg)	0.77	na	na	1.03	na	1.23	0.90	na	37.2%
	Farm Gate Value per Harvested Hectare (\$/ha)	19,818	21,131	23,802	23,048	na	33,400	20,877	na	60.0%
Spinach	<b>Farm Gate Value (\$'000)</b>	<b>1,039</b>	<b>1,392</b>	<b>1,117</b>	<b>887</b>	<b>1,141</b>	<b>953</b>	<b>1,115</b>	<b>-16.5%</b>	<b>-14.5%</b>
	Planted Area (hectares)	65	63	62	59	45	42	59	-6.7%	-28.6%
	Harvested Area (hectares)	46	55	56	55	42	37	51	-11.9%	-27.2%
	Marketed Production (metric tonnes)	696	832	637	488	619	508	654	-17.9%	-22.4%
	Yield (Kg/ha)	15,200	15,100	11,300	8,800	14,600	12,095	13,020	-17.7%	-7.1%
	Price (\$/kg)	1.49	1.67	1.75	1.82	1.84	1.88	1.72	1.8%	9.3%
	Farm Gate Value per Harvested Hectare (\$/ha)	22,587	25,309	19,946	16,127	27,167	25,757	22,227	-5.2%	15.9%
Squash & Zucchini	<b>Farm Gate Value (\$'000)</b>	<b>5,521</b>	<b>6,443</b>	<b>6,666</b>	<b>7,818</b>	<b>6,462</b>	<b>6,908</b>	<b>6,582</b>	<b>6.9%</b>	<b>5.0%</b>
	Planted Area (hectares)	437	450	462	475	402	384	445	-4.5%	-13.7%
	Harvested Area (hectares)	381	420	427	456	375	374	412	-0.3%	-9.2%
	Marketed Production (metric tonnes)	4,765	5,804	5,827	7,251	6,120	5,487	5,953	-10.3%	-7.8%
	Yield (Kg/ha)	12,600	13,800	13,600	15,900	17,800	14,289	14,740	-19.7%	-3.1%
	Price (\$/kg)	1.16	1.11	1.14	1.08	1.06	1.26	1.11	19.2%	13.5%
	Farm Gate Value per Harvested Hectare (\$/ha)	14,491	15,340	15,611	17,145	17,232	18,471	15,964	7.2%	15.7%
Tomatoes	<b>Farm Gate Value (\$'000)</b>	<b>F</b>	<b>3,250</b>	<b>3,754</b>	<b>4,444</b>	<b>3,644</b>	<b>3,722</b>	<b>3,773</b>	<b>2.1%</b>	<b>-1.4%</b>
	Planted Area (hectares)	97	118	138	140	125	117	124	-6.4%	-5.3%
	Harvested Area (hectares)	93	114	134	138	119	113	120	-5.0%	-5.5%
	Marketed Production (metric tonnes)	1,794	2,245	2,575	3,157	2,361	2,251	2,426	-4.7%	-7.2%
	Yield (Kg/ha)	19,500	19,700	19,300	22,900	20,200	19,239	20,320	-4.8%	-5.3%
	Price (\$/kg)	na	1.45	1.46	1.41	1.54	1.65	1.46	7.1%	12.9%
	Farm Gate Value per Harvested Hectare (\$/ha)	na	28,509	28,015	32,203	30,622	32,938	29,837	7.6%	10.4%
Watermelons	<b>Farm Gate Value (\$'000)</b>	<b>236</b>	<b>175</b>	<b>F</b>	<b>506</b>	<b>578</b>	<b>x</b>	<b>374</b>	<b>na</b>	<b>na</b>
	Planted Area (hectares)	12	F	F	F	28	28	20	0.0%	40.0%
	Harvested Area (hectares)	12	F	F	25	25	26	21	4.0%	25.8%
	Marketed Production (metric tonnes)	258	F	F	569	581	646	469	11.2%	37.6%
	Yield (Kg/ha)	22,000	F	F	22,700	23,600	23,071	22,667	-1.0%	1.8%
	Price (\$/kg)	0.91	na	na	0.89	0.99	na	0.93	na	na
	Farm Gate Value per Harvested Hectare (\$/ha)	19,667	na	na	20,240	23,120	na	19,667	na	na

**Source:** Statistics Canada and adapted from Statistics Canada. Table 32-10-0365-01 Area, production and farm gate value of vegetables (Accessed June 21 2019), unless otherwise specified.

**1** - Includes Chinese cabbage, regular cabbage, kale and other non-regular cabbage.

**2** - Includes baby carrots and regular carrots.

**3** - Does not include Chinese eggplant.

**4** - Includes leaf lettuce, head lettuce and mixed lettuce.

**5** - Tonnage of potatoes based on conversion of hundredweight divided by 22.045855.

**6** - Farm Gate Value is not available for potatoes after 2012 so Farm Cash Receipts (Statistics Canada. Table 32-10-0045-01) is used as a proxy.

**7** - Radishes includes regular radishes and Asian radishes.

**F** - Too unreliable to be published.

**x** - Suppressed to meet the confidentiality requirements of the Statistics Act.

**na** - not available.

**Note:** Some totals may not agree due to rounding.

## GREENHOUSE VEGETABLES

Crop Type	Estimates	2013	2014	2015	2016	2017	2018	Average 2013–2017	2018 vs. 2017 % Change	2018 vs. Average % Change
Greenhouse Cucumbers <sup>1</sup>	<b>Farm Gate Value (\$'000)</b>	<b>45,729</b>	<b>45,208</b>	<b>42,648</b>	<b>44,178</b>	<b>45,691</b>	<b>54,492</b>	<b>44,690</b>	<b>19.3%</b>	<b>21.9%</b>
	Harvested Area ('000 square metres)	413	424	413	446	478	444	428	0.6%	3.8%
	Marketed Production (tonnes)	25,447	24,350	23,706	na	26,315	32,779	24,954	24.6%	31.4%
	Price (\$/kg)	1.80	1.86	1.80	x	1.74	1.66	1.80	23.9%	25.1%
	Yield (kg/m <sup>2</sup> )	61.6	57.4	57.3	na	55.1	73.8	59.0	-4.6%	-7.8%
	Farm Gate Value (\$/m <sup>2</sup> )	110.72	106.62	103.17	98.99	95.62	122.71	104.59	18.6%	17.3%
Greenhouse Peppers	<b>Farm Gate Value (\$'000)</b>	<b>136,995</b>	<b>129,135</b>	<b>135,251</b>	<b>141,050</b>	<b>132,360</b>	<b>127,930</b>	<b>134,958</b>	<b>-3.3%</b>	<b>-5.2%</b>
	Harvested Area ('000 square metres)	1,504	1,523	1,449	1,545	1,551	1,482	1,515	-4.4%	-2.1%
	Marketed Production (tonnes)	41,853	38,716	40,393	42,193	40,435	38,950	40,718	-3.7%	-4.3%
	Price (\$/kg)	3.27	3.34	3.35	3.34	3.27	3.28	3.31	0.8%	-2.3%
	Yield (kg/m <sup>2</sup> )	27.8	25.4	27.9	27.3	26.1	26.3	26.9	0.3%	-1.0%
	Farm Gate Value (\$/m <sup>2</sup> )	91.09	84.76	93.32	91.29	85.32	86.30	89.26	1.1%	-3.3%
Greenhouse Tomatoes	<b>Farm Gate Value (\$'000)</b>	<b>117,068</b>	<b>116,401</b>	<b>116,301</b>	<b>109,207</b>	<b>111,516</b>	<b>107,686</b>	<b>113,764</b>	<b>-2.1%</b>	<b>-5.3%</b>
	Harvested Area ('000 square metres)	1,037	1,047	982	1,097	1,077	1,053	1,048	-2.2%	0.5%
	Marketed Production (tonnes)	63,024	61,190	50,553	48,687	51,228	49,030	54,937	-4.3%	-10.8%
	Price (\$/kg)	1.86	1.90	2.30	2.24	2.18	2.20	2.09	-2.2%	-11.4%
	Yield (kg/m <sup>2</sup> )	60.8	58.5	51.5	44.4	47.6	46.6	52.5	2.3%	5.3%
	Farm Gate Value (\$/m <sup>2</sup> )	112.89	111.20	118.48	99.54	103.59	102.24	108.85	0.1%	-6.1%
Greenhouse Eggplants	<b>Farm Gate Value (\$'000)</b>	<b>na</b>	<b>na</b>	<b>na</b>	<b>x</b>	<b>1,918</b>	<b>1,775</b>	<b>1,918</b>	<b>-7.5%</b>	<b>-7.5%</b>
	Harvested Area ('000 square metres)	na	na	na	x	15	14	15	-11.5%	-11.5%
	Production (tonnes)	na	na	na	x	583,942	516,115	583,942	-11.6%	-11.6%
	Average Price (\$ per kilogram)	na	na	na	x	3.28	3.44	3.28	4.9%	4.9%
	Average Yield (kg /square metre)	na	na	na	na	38.1	38.1	38.1	-0.1%	-0.1%
	Farm Gate Value (\$/m <sup>2</sup> )	na	na	na	na	125.3	131.0	125.27	4.6%	4.6%
Greenhouse Fine Herbs	<b>Farm Gate Value (\$'000)</b>	<b>na</b>	<b>na</b>	<b>na</b>	<b>-</b>	<b>x</b>	<b>x</b>	<b>na</b>	<b>na</b>	<b>na</b>
	Harvested Area ('000 square metres)	na	na	na	-	63	42	na	-33.9%	na
	Production (tonnes)	na	na	na	-	612	409	612.38	-33.2%	-0.33
	Average Price (\$ per kilogram)	na	na	na	-	x	x	na	na	na
	Average Yield (kg /square metre)	na	na	na	na	9.7	9.8	9.67	1.0%	1.0%
	Farm Gate Value (\$/m <sup>2</sup> )	na	na	na	na	na	na	na	na	na
Greenhouse Fresh Lettuce	<b>Farm Gate Value (\$'000)</b>	<b>x</b>	<b>x</b>	<b>x</b>	<b>x</b>	<b>x</b>	<b>x</b>	<b>na</b>	<b>na</b>	<b>na</b>
	Harvested Area ('000 square metres)	x	21	x	x	43	18	32	-58.5%	-44.0%
	Marketed Production (tonnes)	x	x	x	x	1,669	x	1,669	na	na
	Price (\$/kg)	3.06	2.66	2.96	x	x	x	2.89	na	na
	Yield (kg/m <sup>2</sup> )	na	na	na	na	39.0	na	39.0	na	na
	Farm Gate Value (\$/m <sup>2</sup> )	na	na	na	na	na	na	na	na	na

**Source:** Statistics Canada and adapted from Statistics Canada. Table 32-10-0456-01 - Production and value of greenhouse vegetables (accessed June 18, 2019).

**1** - Tonnage based on conversion of 1 dozen cucumbers equal to approximately 13 pounds or 5.9 kilograms.

**x** - Suppressed to meet the confidentiality requirements of the Statistics Act.

**na** - not available.

## BERRIES AND GRAPES

Crop	Variables	2013	2014	2015	2016	2017	2018	Average 2013–2017	2018 vs. 2017 % Change	2018 vs. Average % Change
Blackberries <sup>2</sup>	Farm Gate Value (\$'000)	na	na	na	na	na	4,163	na	na	na
	Cultivated Area <sup>1</sup> (hectares)	na	na	na	na	na	87	na	na	na
	Harvested Area (hectares)	na	na	na	na	na	87	na	na	na
	Production (tonnes)	na	na	na	na	na	839	na	na	na
	Average Yield (kg/ha)	na	na	na	na	na	9,644	na	na	na
	Prices (\$/kg)	na	na	na	na	na	4.96	na	na	na
	Farm Gate Value per Harvested Hectare (\$/ha)	na	na	na	na	na	47,851	na	na	na
Blueberries <sup>3</sup>	Farm Gate Value (\$'000)	91,735	112,210	156,889	144,589	136,527	161,168	128,390	18.0%	25.5%
	Cultivated Area <sup>1</sup> (hectares)	8,882	9,103	9,342	9,544	10,068	10,117	9,388	0.5%	7.8%
	Harvested Area (hectares)	8,250	8,681	9,084	9,341	9,513	9,915	8,974	4.2%	10.5%
	Production (tonnes)	50,277	65,470	77,803	74,389	61,510	68,968	65,890	12.1%	4.7%
	Average Yield (kg/ha)	6,094	7,542	8,565	7,964	6,466	6,956	7,326	7.6%	-5.1%
	Prices (\$/kg)	1.82	1.71	2.02	1.94	2.22	2.34	1.94	5.3%	20.2%
	Farm Gate Value per Harvested Hectare (\$/ha)	11,119	12,926	17,271	15,479	14,352	16,255	14,229	13.3%	14.2%
Cranberries	Farm Gate Value (\$'000)	48,485	40,477	42,944	46,675	43,086	43,580	44,333	1.1%	-1.7%
	Cultivated Area <sup>1</sup> (hectares)	2,640	2,641	2,642	2,643	2,691	2,220	2,651	-17.5%	-16.3%
	Harvested Area (hectares)	2,310	2,371	2,584	2,553	2,602	1,921	2,484	-26.2%	-22.7%
	Production (tonnes)	41,571	43,258	42,711	45,904	42,628	52,230	43,214	22.5%	20.9%
	Average Yield (kg/ha)	17,996	18,245	16,529	17,980	16,383	27,189	17,427	66.0%	56.0%
	Prices (\$/kg)	1.17	0.94	1.01	1.02	1.01	0.83	1.03	-17.4%	-18.8%
	Farm Gate Value per Harvested Hectare (\$/ha)	20,989	17,072	16,619	18,282	16,559	22,686	17,904	37.0%	26.7%
Raspberries	Farm Gate Value (\$'000)	12,737	19,259	17,869	20,739	20,161	19,436	17,955	1.4%	8.2%
	Cultivated Area <sup>1</sup> (hectares)	1,564	1,472	1,380	1,289	1,189	1,177	1,379	-1.0%	-14.6%
	Harvested Area (hectares)	1,316	1,262	1,129	1,170	1,165	1,161	1,208	-0.3%	-3.9%
	Production (tonnes)	8,799	10,502	8,068	9,040	7,463	7,899	8,774	5.8%	-10.0%
	Average Yield (kg/ha)	6,686	8,322	7,146	7,726	6,406	6,804	7,257	6.2%	-6.3%
	Prices (\$/kg)	1.45	1.83	2.21	2.29	2.70	2.46	2.07	-4.2%	18.8%
	Farm Gate Value per Harvested Hectare (\$/ha)	9,679	15,261	15,827	17,726	17,306	16,741	14,990	1.7%	11.7%
Saskatoon Berries	Farm Gate Value (\$'000)	x	x	x	251	F	x	251	na	na
	Cultivated Area <sup>1</sup> (hectares)	x	x	x	64	F	54	64	na	-15.6%
	Harvested Area (hectares)	x	x	x	46	F	46	46	na	0.0%
	Production (tonnes)	x	x	x	79	F	x	79	na	na
	Average Yield (kg/ha)	na	na	na	1,717	na	na	1,717	na	na
	Prices (\$/kg)	na	na	na	3.18	na	na	3.18	na	na
	Farm Gate Value per Harvested Hectare (\$/ha)	na	na	na	5,457	na	na	5,457	na	na
Strawberries <sup>4</sup>	Farm Gate Value (\$'000)	5,028	5,595	5,295	5,572	6,397	5,579	5,577	-12.8%	0.0%
	Cultivated Area <sup>1</sup> (hectares)	306	278	249	221	206	210	252	1.9%	-16.7%
	Harvested Area (hectares)	234	227	215	217	188	191	216	1.6%	-11.7%
	Production (tonnes)	1,334	1,442	1,137	1,184	1,299	1,108	1,279	-14.7%	-13.4%
	Average Yield (kg/ha)	5,701	6,352	5,288	5,456	6,910	5,801	5,941	-16.0%	-2.4%
	Prices (\$/kg)	3.77	3.88	4.66	4.71	4.92	5.04	4.39	2.2%	14.8%
	Farm Gate Value per Harvested Hectare (\$/ha)	21,487	24,648	24,628	25,677	34,027	29,209	26,093	-14.2%	11.9%

## BERRIES AND GRAPES, continued

Crop	Variables	2013	2014	2015	2016	2017	2018	Average 2013–2017	2018 vs. 2017 % Change	2018 vs. Average % Change
Grapes <sup>5</sup>	<b>Farm Gate Value (\$'000)</b>	<b>44,893</b>	<b>46,947</b>	<b>49,764</b>	<b>57,064</b>	<b>63,121</b>	<b>72,583</b>	<b>52,358</b>	<b>15.0%</b>	<b>38.6%</b>
	Cultivated Area <sup>1</sup> (hectares)	4,121	4,122	3,905	3,918	3,855	3,985	3,984	3.4%	0.0%
	Harvested Area (hectares)	3,951	3,718	3,753	3,786	3,772	3,771	3,796	0.0%	-0.7%
	Production (tonnes)	24,294	26,121	26,236	29,540	26,481	29,572	26,534	11.7%	11.4%
	Average Yield (kg/ha)	6,149	7,026	6,991	7,802	7,020	7,842	6,998	11.7%	12.1%
	Prices (\$/kg)	1.85	1.80	1.90	1.93	2.38	2.45	1.97	3.0%	24.5%
	Farm Gate Value per Harvested Hectare (\$/ha)	11,362	12,627	13,260	15,072	16,734	19,248	13,811	15.0%	39.4%
Grapes, labrusca (table) <sup>6</sup>	<b>Farm Gate Value (\$'000)</b>	<b>na</b>	<b>1,478</b>	<b>1,637</b>	<b>1,856</b>	<b>1,536</b>	<b>2,335</b>	<b>1,627</b>	<b>52.0%</b>	<b>43.5%</b>
	Cultivated Area <sup>1</sup> (hectares)	na	67	61	56	51	74	59	45.1%	26.0%
	Harvested Area (hectares)	na	57	56	55	49	74	54	51.0%	36.4%
	Production (tonnes)	na	652	632	771	646	861	675	33.3%	27.5%
	Average Yield (kg/ha)	na	na	11,286	14,018	13,184	11,635	9,985	-11.7%	16.5%
	Prices (\$/kg)	na	2.27	2.59	2.41	2.38	2.71	2.41	14.1%	12.5%
	Farm Gate Value per Harvested Hectare (\$/ha)	na	25,930	29,232	33,745	31,347	31,554	30,064	0.7%	5.0%
Grapes, vinifera (wine) <sup>6</sup>	<b>Farm Gate Value (\$'000)</b>	<b>na</b>	<b>45,469</b>	<b>48,127</b>	<b>55,208</b>	<b>61,585</b>	<b>70,248</b>	<b>52,597</b>	<b>14.1%</b>	<b>33.6%</b>
	Cultivated Area <sup>1</sup> (hectares)	na	4,055	3,845	3,862	3,804	3,911	3,892	2.8%	0.5%
	Harvested Area (hectares)	na	3,660	3,698	3,731	3,723	3,696	3,703	-0.7%	-0.2%
	Production (tonnes)	na	25,469	25,603	28,769	25,834	28,711	26,419	11.1%	8.7%
	Average Yield (kg/ha)	na	6,602	6,602	6,602	6,602	7,768	7,133	11.9%	8.9%
	Prices (\$/kg)	na	1.79	1.88	1.92	2.38	2.45	1.99	2.6%	22.8%
	Farm Gate Value per Harvested Hectare (\$/ha)	na	12,423	13,014	14,797	16,542	19,006	14,194	14.9%	33.9%

**Source:** Statistics Canada and adapted from Statistics Canada. Table 32-10-0364-01 Estimates, production and farm gate value of fresh and processed fruits (accessed June 19, 2019).

**1** - Cultivated area includes bearing (producing) and non-bearing area.

**2** - Statistics Canada released estimates of blackberries beginning in 2018.

**3** - Total blueberry production includes figures from on-farm land only; Unmanaged Crown land is excluded.

**4** - Conversion factor used: One quart of strawberries equals 1.25 pounds.

**5** - Includes table grapes and wine grapes.

**6** - Before 2014 Stats Can did not track the separate grape types.

**x** - Suppressed to meet the confidentiality requirements of the Statistics Act.

**na** - not available

## TREE FRUITS

Crop	Variables	2013	2014	2015	2016	2017	2018	Average 2013–2017	2018 vs. 2017 % Change	2018 vs. Average % Change
Apples <sup>2</sup>	<b>Farm Gate Value (\$'000)</b>	<b>47,205</b>	<b>47,818</b>	<b>49,184</b>	<b>52,759</b>	<b>59,494</b>	<b>60,646</b>	<b>51,292</b>	<b>18.2%</b>	<b>18.2%</b>
	Cultivated Area <sup>1</sup> (hectares)	3,910	3,914	3,917	3,921	3,658	3,838	3,901	-0.2%	-1.6%
	Harvested Area (hectares)	3,595	3,730	3,685	3,688	3,610	3,532	3,662	-2.2%	-3.5%
	Production (tonnes)	84,397	100,554	101,533	103,626	100,694	103,020	98,161	2.3%	5.0%
	Average Yield (kg/ha)	23,476	26,958	27,553	28,098	27,893	29,168	26,796	4.6%	8.9%
	Prices (\$/kg)	0.56	0.48	0.48	0.51	0.59	0.59	0.52	-0.4%	12.4%
	Farm Gate Value per Harvested Hectare (\$/ha)	13,131	12,820	13,347	14,306	16,480	17,170	14,017	4.2%	22.5%



## TREE FRUITS, continued

Crop	Variables	2013	2014	2015	2016	2017	2018	Average 2013–2017	2018 vs. 2017 % Change	2018 vs. Average % Change
Apricots	<b>Farm Gate Value (\$'000)</b>	<b>601</b>	<b>1058</b>	<b>1273</b>	<b>1507</b>	<b>1190</b>	<b>1386</b>	<b>1125.8</b>	<b>23.1%</b>	<b>23.1%</b>
	Cultivated Area <sup>1</sup> (hectares)	96	97	98	98	93	92	96.4	-1.1%	-4.6%
	Harvested Area (hectares)	81	74	92	89	85	85	84.2	0.0%	1.0%
	Production (tonnes)	426	803	889	1022	794	907	786.8	14.2%	15.3%
	Average Yield (kg/ha)	5,259	10,851	9,663	11,483	9,341	10,671	9,320	14.2%	14.5%
	Prices (\$/kg)	1.41	1.32	1.43	1.47	1.50	1.53	1.43	2.0%	7.1%
	Farm Gate Value per Harvested Hectare (\$/ha)	7,420	14,297	13,837	16,933	14,000	16,306	13,297	16.5%	22.6%
Cherries, Sweet	<b>Farm Gate Value (\$'000)</b>	<b>44,848</b>	<b>49,618</b>	<b>61,083</b>	<b>56,608</b>	<b>84,744</b>	<b>88,941</b>	<b>59,380</b>	<b>5.0%</b>	<b>49.8%</b>
	Cultivated Area <sup>1</sup> (hectares)	1,809	1,869	1,928	1,987	1,942	1,944	1,907	1.9%	1.9%
	Harvested Area (hectares)	1,712	1,805	1,841	1,858	1,739	1,878	1,791	8.0%	4.9%
	Production (tonnes)	11,652	15,198	16,990	15,871	23,484	24,452	16,639	4.1%	47.0%
	Average Yield (kg/ha)	6,806	8,420	9,229	8,542	13,504	13,020	9,300	-3.6%	40.0%
	Prices (\$/kg)	3.85	3.26	3.60	3.57	3.61	3.64	3.58	0.8%	1.7%
	Farm Gate Value per Harvested Hectare (\$/ha)	26,196	27,489	33,179	30,467	48,731	47,359	33,213	-2.8%	42.6%
Sour Cherries	<b>Farm Gate Value (\$'000)</b>	<b>x</b>	<b>F</b>	<b>x</b>	<b>199</b>	<b>F</b>	<b>x</b>	<b>199</b>	<b>na</b>	<b>na</b>
	Cultivated Area <sup>1</sup> (hectares)	x	F	x	55	F	38	55	na	-30.9%
	Harvested Area (hectares)	x	F	x	45	F	35	45	na	-22.2%
	Production (tonnes)	x	F	x	186	F	117	186	na	-37.1%
	Average Yield (kg/ha)	na	na	na	4,133	na	3,343	4,133	na	-19.1%
	Prices (\$/kg)	na	na	na	1.07	na	na	1	na	na
	Farm Gate Value per Harvested Hectare (\$/ha)	na	na	na	4,422	na	na	na	na	na
Nectarines	<b>Farm Gate Value (\$'000)</b>	<b>800</b>	<b>1265</b>	<b>1325</b>	<b>1,589</b>	<b>1,135</b>	<b>1,309</b>	<b>1222.8</b>	<b>15.3%</b>	<b>7.0%</b>
	Cultivated Area <sup>1</sup> (hectares)	75	80	71	63	60	66	69.8	-5.4%	-5.4%
	Harvested Area (hectares)	59	73	71	59	58	63	64	8.6%	-1.6%
	Production (tonnes)	659	868	905	1078	714	798	844.8	11.8%	-5.5%
	Average Yield (kg/ha)	11,169	11,890	12,746	18,271	12,310	na	na	na	na
	Prices (\$/kg)	1.21	1.46	1.46	1.47	1.59	1.64	1.44	3.2%	13.9%
	Farm Gate Value per Harvested Hectare (\$/ha)	13,559	17,329	18,662	26,932	19,569	na	na	na	na
Peaches	<b>Farm Gate Value (\$'000)</b>	<b>5,580</b>	<b>7,367</b>	<b>8,008</b>	<b>8,232</b>	<b>7,300</b>	<b>7,874</b>	<b>7,297</b>	<b>7.9%</b>	<b>7.9%</b>
	Cultivated Area <sup>1</sup> (hectares)	516	518	520	522	476	474	510.4	-7.1%	-7.1%
	Harvested Area (hectares)	516	462	487	499	476	473	488	-0.6%	-3.1%
	Production (tonnes)	4,876	6,382	6,130	6,309	5,392	5,796	5,818	7.5%	-0.4%
	Average Yield (kg/ha)	9,450	13,814	12,587	12,643	11,328	12,254	11,964	8.2%	2.4%
	Prices (\$/kg)	1.14	1.15	1.31	1.30	1.35	1.36	1.25	0.3%	8.4%
	Farm Gate Value per Harvested Hectare (\$/ha)	10,814	15,946	16,444	16,497	15,336	16,647	15,007	8.5%	10.9%
Pears	<b>Farm Gate Value (\$'000)</b>	<b>4,118</b>	<b>4,434</b>	<b>3,858</b>	<b>3,908</b>	<b>4,100</b>	<b>4,476</b>	<b>4,066</b>	<b>11.6%</b>	<b>10.1%</b>
	Cultivated Area <sup>1</sup> (hectares)	259	259	259	259	249	257	257.4	-0.2%	-0.2%
	Harvested Area (hectares)	238	245	225	223	238	253	235.4	2.8%	7.5%
	Production (tonnes)	6,270	6,255	5,094	4,980	5,067	5,325	5,533	5.1%	-3.8%
	Average Yield (kg/ha)	26,345	25,531	22,640	22,332	21,290	21,047	23,489	2.2%	-10.4%
	Prices (\$/kg)	0.66	0.71	0.76	0.78	0.81	0.84	0.74	6.2%	13.6%
	Farm Gate Value per Harvested Hectare (\$/ha)	17,303	18,098	17,147	17,525	17,227	17,692	17,275	8.5%	2.4%

## TREE FRUITS, continued

Crop	Variables	2013	2014	2015	2016	2017	2018	Average 2013–2017	2018 vs. 2017 % Change	2018 vs. Average % Change
Plums & Prunes	Farm Gate Value (\$'000)	1537	1,993	1,752	1,659	1,856	x	1,759	na	na
	Cultivated Area <sup>1</sup> (hectares)	190	190	191	191	182	178	188.8	-5.7%	-5.7%
	Harvested Area (hectares)	181	189	155	146	146	146	163.4	0.0%	-10.6%
	Production (tonnes)	1,526	2,131	1,649	1,581	1,473	x	1,672	na	na
	Average Yield (kg/ha)	8,431	11,275	10,639	10,829	10,089	na	10,253	na	na
	Prices (\$/kg)	1.01	0.94	1.06	1.05	1.26	na	1.06	na	na
	Farm Gate Value per Harvested Hectare (\$/ha)	8,492	10,545	11,303	11,363	12,712	na	10,883	na	na

**Source:** Statistics Canada and adapted from Statistics Canada. Table 32-10-0364-01 Estimates, production and farm gate value of fresh and processed fruits (accessed June 19, 2019).

**1** – Cultivated area includes bearing (producing) and non-bearing area.

**2** – Conversion factor used: one bushel of apples equals 42.0 pounds.

**x** – Suppressed to meet the confidentiality requirements of the Statistics Act.

**na** – not available

## FLORICULTURE PRODUCTS

Crop	2013	2014	2015	2016	2017	2018	Average 2013–2018	2018 vs. 2016 % Change	2018 vs. Average % Change
<b>Greenhouse Flowers and Plants</b>									
<b>Total Cut Flowers<sup>1</sup></b>	<b>86,979,510</b>	<b>89,871,743</b>	<b>82,244,761</b>	<b>x</b>	<b>82,001,189</b>	<b>74,296,005</b>	<b>85,274,301</b>	<b>-9.4%</b>	<b>-12.9%</b>
Alstroemeria	5,860,287	3,652,095	3,889,317	x	x	2,056,966	4,467,233	na	-54.0%
Chrysanthemums	12,441,176	16,467,959	x	x	12,028,862	12,354,929	13,645,999	2.7%	-9.5%
Daffodils	2,477,991	x	x	x	x	x	2,477,991	na	na
Freesia	x	F	x	3,120,965	3,353,931	x	3,237,448	na	na
Gerberas	19,109,972	x	x	x	x	26,221,475	19,109,972	na	37.2%
Iris	x	40,000	40,500	x	x	170,634	40,250	na	323.9%
Lilies	3,602,417	1,820,987	2,659,640	x	3,998,240	5,266,760	3,020,321	31.7%	74.4%
Roses	x	1,995,473	x	x	x	x	1,995,473	na	na
Snapdragons	x	1,414,993	x	x	719,216	777,148	1,067,105	na	-27.2%
Tulips	24,332,547	19,635,933	20,789,055	x	x	15,724,579	21,585,845	na	-27.2%
Other	11,956,199	16,874,098	12,190,811	x	4,119,835		13,673,703	na	-69.9%
<b>Total Cuttings</b>	<b>F</b>	<b>20,845,771</b>	<b>17,921,389</b>	<b>13,699,199</b>	<b>x</b>	<b>6,649,582</b>	<b>17,488,786</b>	<b>na</b>	<b>-62.0%</b>
Geraniums	2,002,728	2,626,210	3,712,716	x	x	x	2,780,551	na	na
Impatiens	291,048	316,280	x	x	x	x	303,664	na	na
Other cuttings	F	15,966,400	12,551,494	10,067,251	x	4,843,709	12,861,715	na	-62.3%
<b>Total Potted Plants<sup>1</sup></b>	<b>48,399,774</b>	<b>47,251,126</b>	<b>55,675,029</b>	<b>54,012,377</b>	<b>51,205,568</b>	<b>49,089,450</b>	<b>51,285,775</b>	<b>-3.9%</b>	<b>-4.3%</b>
<b>Indoor Potted Plants</b>									
African violets	x	x	x	x	336,175	749,666	436,175	71.9%	71.9%
Azaleas	129,076	122,541	115,245	x	x	176,906	122,287	na	44.7%
Chrysanthemums	1,062,217	1,177,815	829,875	607,554	461,998	493,422	827,892	6.8%	-40.4%
Cyclamen	189,807	317,552	412,561	418,071	143,837	405,325	296,366	181.8%	36.8%
Gerberas	756,323	465,474	718,243	693,197	333,122	514,489	613,272	18.8%	-16.1%
Hanging pots	x	190,418	484,580	469,789	171,428	231,653	329,054	35.1%	-29.6%
Kalanchoe	970,955	986,523	1,086,551	x	1,527,443	x	1,142,868	na	na
Lilies	761,985	166,787	2,780,312	1,354,874	458,187	768,929	1,104,429	67.8%	-30.4%
Orchids	1,200,959	862,188	851,020	x	626,029	598,262	885,049	-4.4%	-32.4%
Poinsettias	2,988,205	2,096,125	1,948,746	1,847,362	1,449,901	1,233,845	2,066,068	-14.9%	-40.3%

## FLORICULTURE PRODUCTS, continued

Crop	2013	2014	2015	2016	2017	2018	Average 2013–2018	2018 vs. 2016 % Change	2018 vs. Average % Change
Primula	1,739,799	1,423,894	1,627,975	2,352,849	2,157,472	1,611,156	1,820,398	-17.7%	-11.5%
Miniature roses	747,765	855,427	x	x	x	784,816	801,596	na	-2.1%
Tropical foliage, green plants	3,062,545	2,565,942	3,639,464	3,706,537	5,409,858	5,178,260	3,676,869	-4.3%	40.8%
Tulips	22,903	x	F	62,983	x	x	42,943	na	na
Other	1,053,769	3,034,194	1,446,247	1,527,993	1,434,486	1,325,066	1,699,338	-7.6%	-22.0%
<b>Outdoor Potted Plants</b>									
Argyranthemum	137,117	145,007	125,526	61,507	57,661	44,352	105,364	-23.1%	-57.9%
Begonias	2,736,466	1,513,236	1,925,866	1,534,686	831,241	854,083	1,708,299	2.7%	-50.0%
Chrysanthemums	375,910	270,623	343,362	390,308	476,160	241,414	371,273	-49.3%	-35.0%
Geraniums	5,940,410	5,717,548	5,766,090	5,389,525	3,639,041	3,316,501	5,290,523	-8.9%	-37.3%
Herbaceous perennials	2,714,271	1,914,404	2,895,304	1,198,848	1,502,505	1,205,348	2,045,066	-19.8%	-41.1%
Hawker's balsams (Impatiens Hawkeri)	1,573,516	948,100	1,380,560	739,772	618,676	549,199	1,052,125	-11.2%	-47.8%
Petunias	3,235,164	2,364,815	3,363,757	1,901,683	1,628,886	1,317,681	2,498,861	-19.1%	-47.3%
Other	13,967,891	17,354,304	20,469,048	18,265,891	19,256,695	18,060,093	17,862,766	-6.2%	1.1%
<b>Bedding plants, ornamental</b>	<b>48,360,400</b>	<b>49,418,460</b>	<b>59,239,958</b>	<b>64,907,790</b>	<b>77,610,409</b>	<b>61,148,068</b>	<b>59,907,403</b>	<b>-21.2%</b>	<b>2.1%</b>
<b>Bedding plants, vegetables</b>	<b>122,706,745</b>	<b>129,285,917</b>	<b>140,799,257</b>	<b>141,242,864</b>	<b>110,740,235</b>	<b>77,471,800</b>	<b>128,955,004</b>	<b>-30.0%</b>	<b>-39.9%</b>

Estimates of field-grown cut flowers area, production and sales <sup>2</sup>	2014	2015	2016	2017	2018	Average 2016–2017	2018 vs. 2017 % Change	2018 vs. Average % Change
Field-grown flowers operations – number	na	na	71	89	92	80	3.4%	15.0%
Field-grown flowers area – hectares	na	na	166	164	168	165	2.4%	1.8%
Cut flowers – number	na	na	35,676,625	36,353,488	37,448,987	36,015,027	3.0%	4.0%
Gross sales – dollars	na	na	10,009,925	12,825,750	10,003,328	11,417,837	-22.0%	-12.4%

**Source:** Statistics Canada and adapted from Statistics Canada. Table 32-10-0246-01 Production and sale of greenhouse flowers and plants, Table 32-10-0021-01 Production of potted plants, cut flowers, cuttings, by variety and tree seedlings and Table 32-10-0452-01 Estimates of field-grown cut flowers area, production and sales (accessed June 25, 2019).

1 – Includes flowers grown or given some cultural treatment and sold.

2 – Statistics Canada started in 2016 estimates of field-grown cut flowers area, production and sales.

F – Too unreliable to be published.

na – not available



## PRODUCTION OF SOD AND NURSERY PRODUCTS

Type of Crop	2013	2014	2015	2016	2017	2018	Average 2013–2017	2018 vs. 2017 % Change	2018 vs. Average % Change
<b>Number of Field Grown Nursery Products</b>	<b>(000's)</b>						<b>(000's)</b>		
Coniferous trees	1,135	1,418	924	835	718	593	1,006	-17.4%	-41.0%
Coniferous evergreen shrubs	375	509	558	428	256	114	425	-55.3%	-73.1%
Deciduous shrubs (including roses)	F	137	F	x	33	288	85	774.0%	239.7%
Evergreen broadleaf shrubs	121	200	76	x	394	18	198	-95.4%	-90.8%
Fruit trees	340	524	238	309	456	406	373	-11.0%	8.6%
Nursery tree seedlings <sup>1</sup>	F	x	1.3	3.1	0.1	23.2	1.5	27867.5%	1445.8%
Perennials and annuals	4,204	F	6,604	4,807	2,576	2,759	4,548	7.1%	-39.3%
Shade or ornamental trees	1,882	2,836	716	615	550	260	1,320	-52.7%	-80.3%
Small fruit bushes	F	F	F	x	x	218	na	na	na
Vines	F	F	F	x	0	1	na	99.4%	99.4%
Other trees and plants	F	F	F	21	x	101	21	na	375.4%
<b>Containers of Grown Nursery Products</b>	<b>(000's)</b>						<b>(000's)</b>		
Coniferous trees	360	F	708	968	2,172	421	1,052	-80.6%	-60.0%
Coniferous evergreen shrubs	1,661	1,915	1,065	2,334	2,759	4,503	1,947	63.2%	131.3%
Deciduous shrubs (including roses)	3,452	2,037	3,646	3,895	5,148	4,296	3,636	-16.6%	18.2%
Evergreen broadleaf shrubs	1,116	1,643	1,341	1,669	2,014	1,823	1,557	-9.5%	17.1%
Fruit trees	17.9	41.6	56.1	x	83.2	60.1	49.7	-27.8%	21.0%
Nursery tree seedlings <sup>1</sup>	339,975	222,851	220,514	2,154	1,021	39	111,635	-96.2%	-100.0%
Perennials and annuals	4,776	7,168	7,774	5,707	6,676	6,349	6,420	-4.9%	-1.1%
Shade or ornamental trees	207	298	901	370	503	505	456	0.4%	10.9%
Small fruit bushes	329	625	535	394	418	234	460	-44.0%	-49.1%
Vines	411	313	372	302	227	130	325	-42.9%	-60.0%
Other trees and plants	F	F	894	x	1,478	101	1,186	-93.2%	-91.5%
<b>Tree Seedlings - Greenhouse Production (000's)</b>	<b>F</b>	<b>F</b>	<b>F</b>	<b>x</b>	<b>x</b>	<b>2,270</b>	<b>na</b>	<b>na</b>	<b>na</b>
<b>Sod Area Grown for Sale (Hectares)</b>	<b>540</b>	<b>488</b>	<b>542</b>	<b>550</b>	<b>599</b>	<b>571</b>	<b>544</b>	<b>-4.7%</b>	<b>5.0%</b>

**Source:** Statistics Canada and adapted from Statistics Canada. Table 32-10-0031-01 Nursery tree and plant production, Table 32-10-0034-01 Estimates of sod area, sales and resales (accessed June 23, 2019).

**1** – Operations which exclusively produce tree seedlings for reforestation are outside the scope of the 2016 survey. Prior surveys have included their production, affecting also nursery area, production, sales, labour and expenses variables.

**x** – Suppressed to meet the confidentiality requirements of the Statistics Act.

**F** – Too unreliable to be published.

**na** – not available.



# ANIMAL PRODUCTION AND PRICES

## LIVESTOCK ON B.C. FARMS

Type ('000 head)	As at January 1						Average 2013–2017	2018 vs. 2017 % Change	2018 vs. Average % Change
	2014	2014	2015	2016	2017	2018			
<b>Cattle and Calves</b>	('000 head)								
Bulls > 1 year	12.0	11.9	12.1	12.5	13.1	12.6	12.3	-3.8%	2.3%
Dairy Cows	76.4	76.6	77.3	78.4	83.9	85.2	78.5	1.5%	8.5%
Dairy Heifers for breeding	37.8	38.0	39.0	41.2	42.9	43.2	39.8	0.7%	8.6%
Beef Cows	190.8	198.0	207.4	200.4	204.6	208.3	200.2	1.8%	4.0%
Beef Heifers for breeding	36.6	36.4	38.8	37.7	38.7	39.3	37.6	1.6%	4.4%
Beef Heifers for slaughter	23.2	21.4	20.6	21.1	20.1	23.1	21.3	14.9%	8.6%
Steers > 1 year for slaughter	23.7	21.1	18.5	22.8	23.4	22.8	21.9	-2.6%	4.1%
Calves < 1 year	169.5	151.6	161.3	175.9	178.3	175.5	167.3	-1.6%	4.9%
<b>Total Cattle and Calves on Farm</b>	<b>570.0</b>	<b>555.0</b>	<b>575.0</b>	<b>590.0</b>	<b>605.0</b>	<b>610.0</b>	<b>579.0</b>	<b>0.8%</b>	<b>5.4%</b>
<b>Total Cattle for market</b>	<b>46.9</b>	<b>42.5</b>	<b>39.1</b>	<b>43.9</b>	<b>43.5</b>	<b>45.9</b>	<b>43.2</b>	<b>5.5%</b>	<b>6.3%</b>
<b>Hogs</b>	('000 head)								
Breeding stock > 6 months	8.7	9.4	8.9	8.7	9.2	8.9	9.0	-3.3%	-0.9%
Sows and Gilts > 6 months	8.4	9.0	8.5	8.3	8.8	8.6	8.6	-2.3%	0.0%
Boars > 6 months	<b>0.3</b>	<b>0.4</b>	<b>0.4</b>	<b>0.4</b>	<b>0.4</b>	<b>0.3</b>	<b>0.4</b>	<b>-25.0%</b>	<b>-21.1%</b>
All other hogs	77.3	82.6	75.1	77.3	82.8	80.1	79.0	-3.3%	1.4%
sucklings, < 7 kilograms	12.4	13.2	12.7	12.6	12.1	14.7	12.6	21.5%	16.7%
starter hogs, 7 to 22 kilograms	17.9	23.6	23.5	23.3	23.6	23.2	22.4	-1.7%	3.7%
market hogs, 23 to 53 kilograms	14.8	18.6	16.2	17.6	19.6	17.1	17.4	-12.8%	-1.5%
market hogs, 54 to 80 kilograms	17.7	15.8	11.3	12.3	14.5	14.0	14.3	-3.4%	-2.2%
market hogs, > 81 kilograms	14.5	11.4	11.4	11.5	13.0	11.1	12.4	-14.6%	-10.2%
<b>Total Hogs on Farm</b>	<b>86.0</b>	<b>92.0</b>	<b>84.0</b>	<b>86.0</b>	<b>92.0</b>	<b>89.0</b>	<b>88.0</b>	<b>-3.3%</b>	<b>1.1%</b>
<b>Total Hogs for market</b>	<b>47.0</b>	<b>45.8</b>	<b>38.9</b>	<b>41.4</b>	<b>47.1</b>	<b>42.2</b>	<b>44.0</b>	<b>-10.4%</b>	<b>-4.2%</b>
<b>Sheep and Lambs</b>	('000 head)								
Sheep, 1 year or older	26.8	26.2	26.4	25.6	24.6	24.3	25.9	-1.2%	-6.2%
Rams	1.8	1.7	1.7	1.7	1.6	1.8	1.7	12.5%	5.9%
Ewes	25.0	24.5	24.7	23.9	23.0	22.5	24.2	-2.2%	-7.1%
Lambs, under 1 year	17.2	14.8	14.6	14.4	14.4	14.7	15.1	2.1%	-2.5%
Lambs for Breeding	5.0	4.3	3.7	3.0	3.0	2.9	3.8	-3.3%	-23.7%
Lambs for Marketing	12.2	10.5	10.9	11.4	11.4	11.8	11.3	3.5%	4.6%
<b>Total</b>	<b>44.0</b>	<b>41.0</b>	<b>41.0</b>	<b>40.0</b>	<b>39.0</b>	<b>39.0</b>	<b>41.0</b>	<b>0.0%</b>	<b>-4.9%</b>
							5 Year Average	2018 vs. 2017	2018 vs. 5 Yr Avg
<b>Bison<sup>1</sup> ('000 head)</b>	<b>7.8</b>	<b>7.5</b>	<b>6.8</b>	<b>6.8</b>	<b>6.8</b>	<b>6.8</b>	<b>7.1</b>	<b>0.9%</b>	<b>0.0%</b>
<b>Fallow Deer<sup>1</sup> ('000 head)</b>	<b>0.7</b>	<b>0.4</b>	<b>0.4</b>	<b>0.4</b>	<b>0.4</b>	<b>0.4</b>	<b>0.5</b>	<b>4.2%</b>	<b>0.0%</b>

Source: Statistics Canada and Adapted from Statistics Canada. Tables: 32-10-0130-01, 32-10-0145-01, and 32-10-0129-01, accessed June 21, 2019, unless otherwise specified.

1 – Source: B.C. Ministry of Agriculture. Animal Health Branch (September 2019).

## LIVESTOCK PRICES

Species	2013	2014	2015	2016	2017	2018	Average 2013–2017	2018 vs. 2017 % Change	2018 vs. Average % Change
<b>Cattle<sup>1</sup></b>	<b>(Live \$/cwt)</b>								
Feeder Steers (501–600 lb)	149.28	236.70	297.85	213.47	220.92	215.73	223.64	-2.3%	-3.5%
Feeder Steers (601–700 lb)	142.04	218.80	273.71	200.10	207.62	204.65	208.45	-1.4%	-1.8%
Feeder Steers (701–800 lb)	133.79	205.34	252.15	185.76	194.15	191.82	194.24	-1.2%	-1.2%
Feeder Steers (801–900 lb)	126.92	189.90	232.95	174.50	182.35	180.75	181.32	-0.9%	-0.3%
Feeder Heifers (501–600 lb)	133.36	213.48	270.13	184.75	191.92	190.28	198.73	-0.9%	-4.3%
Feeder Heifers (601–700 lb)	128.31	199.63	249.78	175.94	183.78	182.89	187.49	-0.5%	-2.5%
D1,2 Cows <sup>2</sup>	69.73	104.13	125.16	92.36	90.51	83.71	96.38	-7.5%	-13.1%
Bulls	80.17	118.44	147.36	113.81	104.78	98.33	112.91	-6.2%	-12.9%
<b>Hogs</b>	<b>83.91</b>	<b>104.40</b>	<b>82.60</b>	<b>77.89</b>	<b>83.74</b>	<b>77.61</b>	<b>86.51</b>	<b>-7.3%</b>	<b>-10.3%</b>
<b>Lambs</b>	<b>105.67</b>	<b>146.63</b>	<b>189.63</b>	<b>183.15</b>	<b>194.72</b>	<b>199.90</b>	<b>163.96</b>	<b>2.7%</b>	<b>21.9%</b>
<b>Dairy (\$/litre)</b>	<b>0.79</b>	<b>0.81</b>	<b>0.79</b>	<b>0.80</b>	<b>0.79</b>	<b>0.78</b>	<b>0.79</b>	<b>-1.1%</b>	<b>-1.3%</b>
<b>Poultry<sup>3</sup></b>	<b>(Live \$/kg)</b>								
Chicken (< 1.4kg)	1.75	1.67	1.63	1.61	1.60	1.65	1.65	3.1%	-0.1%
Chicken (1.4kg – 2.7kg)	1.77	1.67	1.64	1.63	1.61	1.66	1.66	3.1%	-0.2%
Chicken (> 2.7kg)	1.79	1.71	1.67	1.65	1.64	1.69	1.69	3.0%	-0.2%
Turkey (6.2kg and under)	2.05	2.03	1.97	1.94	1.94	1.97	1.99	1.4%	-0.9%
Turkey (> 6.2kg but not > 8.5kg)	2.05	2.02	2.00	1.96	1.93	2.00	1.99	3.6%	0.4%
Turkey (> 8.5kg but not > 10.8kg)	2.05	2.02	2.00	1.96	1.93	2.00	1.99	3.6%	0.4%
Turkey (> 10.8kg but not > 13.3kg)	2.08	2.04	2.03	1.98	2.00	2.07	2.02	3.5%	2.2%
Turkey (> 13.3kg)	2.05	2.01	2.00	1.95	1.97	2.05	1.99	4.1%	2.8%
<b>Eggs (\$/doz.)</b>	<b>1.75</b>	<b>1.72</b>	<b>1.73</b>	<b>1.77</b>	<b>1.78</b>	<b>1.86</b>	<b>1.75</b>	<b>4.5%</b>	<b>6.5%</b>

**Source:** Statistics Canada and Adapted from Statistics Canada. Table: 32-10-0077-01, accessed July 31, 2019, unless otherwise specified.

**1** – Source: Canfax, 2018 Annual Report.

**2** – Canada's grading system describes the predicted carcass value of live cows even though the cow carcasses have not been graded. D1 cows have excellent muscling, with less than 15 mm of firm, white or amber coloured back fat. D2 cows have medium to excellent muscling, with less than 15 mm of white to yellow back fat. D3 cows have deficient muscling with less than 15 mm of back fat. D4 cows have deficient to excellent muscling with greater than 15 mm of back fat. D1 and D2 cows are predicted to have the highest carcass value.

**3** – Source: Agriculture & Agri-food Canada (AAFC). Based on data provided by Provincial Marketing Boards, compiled by AAFC, Poultry Section (Accessed July 31, 2019).

## LIVESTOCK SUPPLY AND DISPOSITION

('000 Head)	2013	2014	2015	2016	2017	2018	Average 2013–2017	2018 vs. 2016 % Change	2018 vs. Average % Change
<b>Total Supply of Cattle and Calves</b>	<b>800.5</b>	<b>806.8</b>	<b>809.1</b>	<b>822.7</b>	<b>844.6</b>	<b>870.1</b>	<b>816.7</b>	<b>3.0%</b>	<b>6.5%</b>
Beginning inventory of cattle and calves at January 1	540.0	570.0	555.0	575.0	590.0	605.0	566.0	2.5%	6.9%
Calves born	222.6	195.6	206.3	203.9	192.2	181.3	204.1	-5.7%	-11.2%
Interprovincial imports of cattle and calves	35.6	36.6	37.6	38.6	39.6	40.6	37.6	2.5%	8.0%
International imports of cattle and calves	2.3	4.6	10.2	5.2	22.8	43.2	9.0	89.5%	378.9%
<b>Total Disposition of Cattle and Calves</b>	<b>212.8</b>	<b>222.9</b>	<b>208.2</b>	<b>203.4</b>	<b>210.4</b>	<b>230.1</b>	<b>211.5</b>	<b>9.4%</b>	<b>8.8%</b>
Slaughter of cattle and calves	47.0	53.0	54.4	57.2	46.8	43.9	51.7	-6.2%	-15.1%
Slaughter of cattle <sup>1</sup>	45.2	50.8	52.2	55.0	45.1	41.9	49.7	-7.1%	-15.6%
Slaughter of calves <sup>1</sup>	1.8	2.2	2.2	2.2	1.7	2.0	2.0	17.6%	-1.0%
Interprovincial exports of cattle and calves	93.6	94.6	87.5	84.2	104.5	125.6	92.9	20.2%	35.2%
International exports of cattle and calves	41.6	44.7	38.3	34.0	31.8	35.1	38.1	10.4%	-7.8%
Deaths and condemnations of cattle and calves	30.6	30.6	28.0	28.0	27.3	27.2	28.9	-0.4%	-5.9%
<b>Ending inventory of cattle at December 31</b>	<b>570.0</b>	<b>555.0</b>	<b>575.0</b>	<b>590.0</b>	<b>605.0</b>	<b>610.0</b>	<b>579.0</b>	<b>0.8%</b>	<b>5.4%</b>
<b>Total Supply of Hogs</b>	<b>295</b>	<b>299</b>	<b>303</b>	<b>320</b>	<b>308</b>	<b>315.6</b>	<b>304.9</b>	<b>2.5%</b>	<b>3.5%</b>
Beginning inventory of hogs at January 1	88.0	86.0	92.0	84.0	86.0	92.0	87.2	7.0%	5.5%
Pig crop <sup>2</sup>	195.3	201.3	192.6	209.2	199.1	203.6	199.5	2.3%	2.1%
Interprovincial imports of hogs	11.7	11.8	18.0	27.0	22.7	20.0	18.2	-11.9%	9.6%
International imports of hogs	0.0	0.0	0.0	0.0	0.0	0.0	0.0	na	na
<b>Total Disposition of Hogs</b>	<b>209.0</b>	<b>207.1</b>	<b>218.6</b>	<b>234.2</b>	<b>215.8</b>	<b>226.6</b>	<b>216.9</b>	<b>5.0%</b>	<b>4.5%</b>
Interprovincial exports of hogs	10.3	12.2	6.0	3.7	4.8	4.8	7.4	0.0%	-35.1%
International exports of hogs	0.2	0.0	0.4	0.4	0.0	0.0	0.2	na	-100.0%
Deaths and condemnations of hogs	10.2	10.0	11.0	11.8	10.8	11.4	10.8	5.6%	5.9%
Other disposition of hogs <sup>3</sup>	188.3	184.9	201.2	218.3	200.2	210.4	198.6	5.1%	6.0%
<b>Ending inventory of hogs at December 31</b>	<b>86.0</b>	<b>92.0</b>	<b>84.0</b>	<b>86.0</b>	<b>92.0</b>	<b>89.0</b>	<b>88.0</b>	<b>-3.3%</b>	<b>1.1%</b>

**Source:** Statistics Canada and Adapted from Statistics Canada, Tables 32-10-0139-01, 32-10-0145-01 and 32-10-0141-01 (accessed July 30, 2019), unless otherwise specified.

**1** – Source: Statistics Canada, Agriculture Division, by Special Request (July 31, 2019) – data still pending.

**2** – The number of pigs born during the year that were either on hand at the end of the year or had been sold.

**3** – Other dispositions of hogs principally represents slaughter on a province of origin basis and may include hogs destined for export; varies by province.

**Note** – Totals may not add due to rounding.

## LIVESTOCK SUPPLY AND DISPOSITION, continued

('000 Head)	2013	2014	2015	2016	2017	2018	Average 2013–2017	2018 vs. 2016 % Change	2018 vs. Average % Change
<b>Total supply of sheep and lambs</b>	<b>118.7</b>	<b>115.8</b>	<b>116.6</b>	<b>114.5</b>	<b>111.7</b>	<b>108.0</b>	<b>115.5</b>	<b>-3.3%</b>	<b>-6.5%</b>
Beginning inventory of sheep and lambs at January 1	47.0	44.0	41.0	41.0	40.0	39.0	42.6	-2.5%	-8.5%
Lambs born	54.7	55.6	54.7	56.7	54.6	52.2	55.3	-4.4%	-5.5%
Interprovincial imports of sheep and lambs <sup>4</sup>	15.5	16.2	17.6	16.8	16.8	16.7	16.6	-0.6%	0.7%
International imports of sheep and lambs	1.5	0.0	3.3	0.0	0.3	0.1	1.0	-66.7%	-90.2%
<b>Total disposition of sheep and lambs</b>	<b>74.7</b>	<b>74.8</b>	<b>75.6</b>	<b>74.5</b>	<b>72.7</b>	<b>69.0</b>	<b>74.5</b>	<b>-5.1%</b>	<b>-7.3%</b>
Deaths and condemnations of sheep and lambs	9.4	9.7	9.5	9.7	9.3	8.8	9.5	-5.4%	-7.6%
Deaths, sheep	4.3	4.3	4.3	4.2	4.0	3.8	4.2	-5.0%	-10.0%
Deaths, lambs	5.1	5.3	5.1	5.4	5.2	5.0	5.2	-3.8%	-4.2%
Condemnations of sheep and lambs	0.0	0.1	0.1	0.1	0.1	0.0	0.1	-100.0%	-100.0%
Interprovincial exports of sheep and lambs	3.0	2.7	2.1	3.2	1.2	1.3	2.4	8.3%	-46.7%
International exports of sheep and lambs	0.0	0.0	0.0	0.0	0.0	0.0	0.0	na	na
<b>Total slaughter of sheep and lambs</b>	<b>62.3</b>	<b>62.4</b>	<b>64.0</b>	<b>61.6</b>	<b>62.2</b>	<b>58.9</b>	<b>62.5</b>	<b>-5.3%</b>	<b>-5.8%</b>
Federal Provincial Inspected Slaughter (FPIS) <sup>5</sup>	18.3	19.5	20.8	20.6	21.2	17.6	20.1	-17.0%	-12.4%
International imports for slaughter of sheep and lambs	0.0	0.0	0.0	0.0	0.0	0.0	0.0	na	na
Provincially inspected slaughter of sheep and lambs <sup>7</sup>	0.0	0.0	0.0	0.0	0.0	0.0	0.0	na	na
Commercial slaughter of sheep and lambs, not elsewhere specified <sup>8</sup>	0.4	0.4	0.4	0.4	0.4	0.4	0.4	0.0%	0.0%
Sheep and lambs consumed on farms <sup>9</sup>	7.9	7.9	8.1	7.2	7.2	7.5	7.7	4.2%	-2.1%
Farm sales of sheep and lambs to consumers <sup>10</sup>	35.7	34.6	34.7	33.4	33.4	33.4	34.4	0.0%	-2.8%
<b>Ending inventory of sheep and lambs at December 31</b>	<b>44.0</b>	<b>41.0</b>	<b>41.0</b>	<b>40.0</b>	<b>39.0</b>	<b>39.0</b>	<b>41.0</b>	<b>0.0%</b>	<b>-4.9%</b>

**Source:** Statistics Canada and Adapted from Statistics Canada, Tables 32-10-0139-01, 32-10-0145-01 and 32-10-0141-01 (accessed July 30, 2019), unless otherwise specified.

**1** – Source: Statistics Canada, Agriculture Division, by Special Request (July 31, 2019) – data still pending.

**2** – The number of pigs born during the year that were either on hand at the end of the year or had been sold.

**3** – Other dispositions of hogs principally represents slaughter on a province of origin basis and may include hogs destined for export; varies by province.

**4** – A residual is arrived at by taking the number of animals coming to farms in the province minus the number of animals leaving for farming operations outside the province.

**5** – Slaughterings at federally and/or provincially inspected packing plants, by province of origin.

**6** – Imports of live animals from the United States slaughtered in Canada.

**7** – All provincially inspected slaughter not included in Federal Provincial Inspected Slaughter (FPIS)

**8** – Other provincial slaughter not elsewhere specified and not usually inspected.

**9** – Sheep and lambs killed and eaten on farms.

**10** – Sheep and lambs killed and sold at the farm gates.

**Note** – Totals may not add due to rounding.



## MILK PRODUCTION AND UTILIZATION

('000 Head)	2013	2014	2015	2016	2017	2018	Average 2013–2017	2018 vs. 2017 % Change	2018 vs. Average % Change
Fluid Milk	333,595	351,586	371,830	383,277	440,280	458,166	376,114	4.1%	21.8%
Industrial Milk	335,593	336,743	346,840	349,248	348,529	346,033	343,391	-0.7%	0.8%
<b>Total Milk Production</b>	<b>669,190</b>	<b>688,328</b>	<b>718,671</b>	<b>732,522</b>	<b>788,806</b>	<b>804,201</b>	<b>719,503</b>	<b>2.0%</b>	<b>11.8%</b>

*Source: Statistics Canada and Adapted from Statistics Canada. Table 32-10-0113-01, accessed July 30, 2019.*

*Note - Totals may not add due to rounding.*

## POULTRY PRODUCTION AND DISPOSITION

Commodity	2013	2014	2015	2016	2017	2018	Average 2013–2017	2018 vs. 2017 % Change	2018 vs. Average % Change
('000 Birds)									
<b>Total Chicken<sup>1</sup> Production</b>	<b>101,107</b>	<b>103,902</b>	<b>104,610</b>	<b>109,048</b>	<b>113,116</b>	<b>118,378</b>	<b>106,357</b>	<b>4.7%</b>	<b>11.3%</b>
Sold	101,049	103,845	104,549	108,986	113,056	118,317	106,297	4.7%	11.3%
Used in home consumption	58	57	61	62	60	61	60	1.7%	2.3%
<b>Total Turkey Production</b>	<b>2,719</b>	<b>2,727</b>	<b>2,658</b>	<b>2,591</b>	<b>2,515</b>	<b>2,425</b>	<b>2,642</b>	<b>-3.6%</b>	<b>-8.2%</b>
Sold	2,719	2,726	2,657	2,591	2,514	2,424	2,641	-3.6%	-8.2%
Used in home consumption	1	1	1	1	1	1	1	0.0%	0.0%
<b>Total Poultry Production</b>	<b>103,827</b>	<b>106,629</b>	<b>107,268</b>	<b>111,639</b>	<b>115,631</b>	<b>120,803</b>	<b>108,999</b>	<b>4.5%</b>	<b>10.8%</b>
('000 kgs)									
<b>Total Chicken<sup>1</sup></b>	<b>161,932</b>	<b>165,111</b>	<b>164,372</b>	<b>171,636</b>	<b>176,821</b>	<b>189,931</b>	<b>167,974</b>	<b>7.4%</b>	<b>13.1%</b>
Sold	161,806	164,987	164,240	171,504	176,689	189,797	167,845	7.4%	13.1%
Home Consumption	126	123	131	132	132	134	129	1.5%	4.0%
<b>Total Turkey</b>	<b>21,357</b>	<b>21,330</b>	<b>21,089</b>	<b>21,496</b>	<b>21,138</b>	<b>20,579</b>	<b>21,282</b>	<b>-2.6%</b>	<b>-3.3%</b>
Sold	21,351	21,324	21,083	21,490	21,132	20,573	21,276	-2.6%	-3.3%
Home Consumption	6	6	6	6	6	6	6	0.0%	0.0%
<b>Total Poultry</b>	<b>183,289</b>	<b>186,441</b>	<b>185,461</b>	<b>193,132</b>	<b>197,959</b>	<b>210,510</b>	<b>189,256</b>	<b>6.3%</b>	<b>11.2%</b>

*Source: Statistics Canada and Adapted from Statistics Canada. Table 32-10-0117-01, accessed July 30, 2019.*

*1 - Includes stewing hens.*

*Note - Totals may not add due to rounding.*

## EGG PRODUCTION AND DISPOSITION

('000 Dozen)	2013	2014	2015	2016	2017	2018	Average 2013–2017	2018 vs. 2017 % Change	2018 vs. Average % Change
<b>Sold for Consumption</b>	<b>68,653</b>	<b>69,492</b>	<b>71,341</b>	<b>77,713</b>	<b>80,620</b>	<b>83,177</b>	<b>73,564</b>	<b>3.2%</b>	<b>13.1%</b>
Sold for Hatching	8,812	8,823	8,818	9,398	9,916	10,659	9,153	7.5%	16.4%
Home Consumption	252	264	276	288	288	288	274	0.0%	5.3%
Leakers and Rejects	1,546	1,561	1,601	1,739	1,805	1,871	1,650	3.7%	13.4%
Total Egg Production	79,264	80,140	82,036	89,139	92,629	95,995	84,642	3.6%	13.4%
<b>Total Egg Production</b>	<b>79,264</b>	<b>79,264</b>	<b>80,140</b>	<b>82,036</b>	<b>89,137</b>	<b>92,686</b>	<b>81,968</b>	<b>4.0%</b>	<b>13.1%</b>

*Source: Statistics Canada and Adapted from Statistics Canada. Table 32-10-0119-01, accessed July 30, 2019.*

*Note - Totals may not add due to rounding.*

## HONEY PRODUCTION

	2013	2014	2015	2016	2017	2018	Average 2013–2017	2018 vs. 2017 % Change	2018 vs. Average % Change
Number of Beekeepers	2,323	2,405	2,363	2,640	2,640	2,676	2,474	1.4%	8.2%
Number of Colonies	42,544	44,999	45,571	39,885	40,776	52,033	42,755	27.6%	21.7%
Yield per Colony (lbs/Col)	48.6	85.3	81.0	48.5	87.2	60.3	70.1	-30.8%	-14.0%
<b>Total Honey Production ('000 lbs)</b>	<b>2,069</b>	<b>3,840</b>	<b>3,692</b>	<b>1,934</b>	<b>3,556</b>	<b>3,140</b>	<b>3,018</b>	<b>-11.7%</b>	<b>4.0%</b>
<b>Total Value of Honey (\$'000)<sup>1</sup></b>	<b>10,580</b>	<b>12,617</b>	<b>19,471</b>	<b>8,622</b>	<b>14,292</b>	<b>13,320</b>	<b>13,116</b>	<b>-6.8%</b>	<b>1.6%</b>

**Source:** Statistics Canada and Adapted from Statistics Canada. Table 32–10–0353–01 (formerly CANSIM 001–0007), (accessed July 31, 2019).

<sup>1</sup> – Statistics Canada refers to the Farm Gate Value for Honey as the Total Value of Honey.

## AQUACULTURE PRODUCTION

	Harvest ('000 Tonnes)						Average 2014–2017	2018 vs. 2017 % Change	2018 vs. Average % Change
Species Group	2013	2014	2015	2016	2017	2018			
Salmon	62.4	67.7	93.0	92.8	85.7	87.1	84.8	1.6%	2.7%
Geoducks & Other Clams	1.2	1.3	1.1	1.0	1.3	1.2	1.2	-7.7%	2.1%
Oysters	6.7	8.2	9.2	9.3	8.3	7.2	8.8	-13.3%	-17.7%
Mussels & Other Shellfish <sup>1</sup>	0.4	0.7	0.7	0.7	0.3	0.6	0.6	100.0%	0.0%
Other <sup>2</sup>	1.6	1.5	1.2	1.7	1.6	1.9	1.5	18.8%	26.7%
<b>Total</b>	<b>72.3</b>	<b>79.4</b>	<b>105.2</b>	<b>105.5</b>	<b>97.2</b>	<b>98.0</b>	<b>96.8</b>	<b>0.8%</b>	<b>1.2%</b>

**Source:** B.C. Ministry of Agriculture, August 2019. A 4-year average (2014–17) is used for aquaculture to enable comparison with the 4-year average of wild commercial fisheries (which accounts for cyclical fluctuations in wild fish populations).

<sup>1</sup> – Includes scallops and crayfish.

<sup>2</sup> – Includes freshwater trout, tilapia, barramundi, sturgeon, sablefish, Arctic char, shrimp, microalgae, kelp and seaweeds.

## WILD COMMERCIAL FISHERIES PRODUCTION

	Harvest ('000 Tonnes)						Average 2014–2017	2018 vs. 2017 % Change	2018 vs. Average % Change
Species Group	2013	2014	2015	2016	2017	2018			
Salmon	31.6	42.6	20.8	24.7	13.7	17.8	25.5	29.9%	-30.1%
Herring	21.2	20.8	22.5	23.9	28.0	20.3	23.8	-27.5%	-14.7%
Groundfish <sup>1</sup>	97.9	85.9	87.6	120.2	126.6	141.6	105.1	11.8%	34.8%
Shellfish <sup>2</sup>	13.3	13.6	18.3	15.0	12.1	13.4	14.8	10.7%	-9.2%
Other <sup>3</sup>	5.4	5.1	5.3	3.1	2.5	3.2	4.0	28.0%	-20.0%
<b>Total</b>	<b>169.4</b>	<b>168.0</b>	<b>154.5</b>	<b>186.9</b>	<b>182.9</b>	<b>196.3</b>	<b>173.1</b>	<b>7.3%</b>	<b>13.4%</b>

**Source:** B.C. Ministry of Agriculture, August 2019. A 4-year average (2014–17) is used to account for cyclical fluctuations in wild fish populations.

<sup>1</sup> – Includes arrowtooth flounders, dogfish, hake, halibut, lingcod, Pacific cod, pollock, rockfish, sablefish, skates, soles, flounders and other groundfish.

<sup>2</sup> – Includes clams, crabs, geoducks, prawns, scallops, sea cucumbers, sea urchins, shrimp, octopuses, squid, krill, gooseneck barnacles and other shellfish.

<sup>3</sup> – Includes mackerel, tuna, other finfish, kelp, sea vegetables and seaweeds.

## AQUACULTURE PRICES

Species Group	Price (\$/Kg)						Average 2014–2017	2018 vs. 2017 % Change	2018 vs. Average % Change
	2013	2014	2015	2016	2017	2018			
Salmon	6.67	5.89	5.09	8.01	8.50	8.87	6.87	4.3%	29.0%
Geoducks & Other Clams	5.92	4.62	6.09	5.90	5.62	5.50	5.56	-2.1%	-1.0%
Oysters	1.93	1.59	1.60	1.65	1.77	1.83	1.65	3.5%	11.0%
Mussels & Other Shellfish <sup>1</sup>	6.50	4.43	6.00	5.00	5.67	5.17	5.27	-8.8%	-2.0%
Other <sup>2</sup>	7.56	8.60	7.33	7.88	11.13	10.11	8.73	-9.2%	15.7%

**Source:** B.C. Ministry of Agriculture, August 2019. A 4-year average (2014–17) is used for aquaculture to enable comparison with the 4-year average of wild commercial fisheries (which accounts for cyclical fluctuations in wild fish populations).

**1** – Includes scallops and crayfish.

**2** – Includes freshwater trout, tilapia, barramundi, sturgeon, sablefish, Arctic char, shrimp, microalgae, kelp and seaweeds.

## WILD COMMERCIAL FISHERIES PRICES

Species Group	Price (\$/Kg)						Average 2014–2017	2018 vs. 2017 % Change	2018 vs. Average % Change
	2013	2014	2015	2016	2017	2018			
Salmon	1.43	3.24	2.98	3.15	4.04	6.28	3.35	55.5%	87.2%
Herring	0.80	0.75	0.69	0.94	1.01	1.07	0.85	5.4%	25.9%
Groundfish <sup>1</sup>	1.14	1.36	1.59	1.26	1.25	1.06	1.37	-15.3%	-22.3%
Shellfish <sup>2</sup>	9.45	10.44	7.93	8.32	11.42	13.19	9.53	15.5%	38.5%
Other <sup>3</sup>	4.57	3.22	2.89	7.06	6.88	4.94	5.01	-28.2%	-1.5%

**Source:** B.C. Ministry of Agriculture, August 2019. A 4-year average (2014–17) is used to account for cyclical fluctuations in wild fish populations.

**1** – Includes arrowtooth flounders, dogfish, hake, halibut, lingcod, Pacific cod, pollock, rockfish, sablefish, skates, soles, flounders and other groundfish.

**2** – Includes clams, crabs, geoducks, prawns, scallops, sea cucumbers, sea urchins, shrimp, octopuses, squid, krill, gooseneck barnacles and other shellfish.

**3** – Includes mackerel, tuna, other finfish, kelp, sea vegetables and seaweeds.



# VALUE OF AGRICULTURE, FOOD AND SEAFOOD

## FARM CASH RECEIPTS FOR AGRICULTURE

Commodity	2013	2014	2015	2016	2017	2018	Average 2013–2017	2018 vs. 2017 % Change	2018 vs. Average % Change
Grains and Oilseeds <sup>1</sup>	68.8	87.3	62.4	50.9	56.4	79.7	65.2	41.2%	22.3%
Tree Fruits	109.6	113.1	126.4	124.3	155.7	165.7	125.8	6.4%	31.7%
Berries, Grapes & Other Small Fruits	205.1	233.7	276.6	277.8	274.6	308.2	253.5	12.2%	21.6%
Field Vegetables <sup>2</sup>	241.4	252.4	271.3	321.1	322.8	331.5	281.8	2.7%	17.6%
Greenhouse Vegetables	305.3	296.6	298.4	298.4	301.9	299.2	300.1	-0.9%	-0.3%
Floriculture products (except flower seeds)	277.1	274.1	299.1	294.6	301.1	289.7	289.2	-3.8%	0.2%
Nursery products (except tree and shrub seeds)	201.9	199.5	207.0	158.2	156.4	162.0	184.6	3.6%	-12.2%
Other Crops	44.9	55.1	76.1	86.4	93.4	145.9	71.2	56.3%	105.0%
<b>Total Crops</b>	<b>1,465.4</b>	<b>1,521.4</b>	<b>1,627.9</b>	<b>1,623.2</b>	<b>1,674.3</b>	<b>1,794.7</b>	<b>1,582.4</b>	<b>7.2%</b>	<b>13.4%</b>
Beef Cattle and Calves	182.4	280.1	311.2	222.6	241.0	255.5	247.5	6.0%	3.3%
Dairy	527.7	554.7	564.4	586.1	624.9	633.2	571.6	1.3%	10.8%
Hogs	30.5	37.1	32.2	32.9	32.3	31.3	33.0	-3.1%	-5.1%
Chicken	378.8	369.5	358.0	368.7	376.1	411.6	370.2	9.4%	11.2%
Turkey	51.3	50.4	49.3	49.2	48.2	48.7	49.7	1.1%	-1.9%
Total Eggs	120.1	119.7	123.8	137.7	143.6	154.9	129.0	7.9%	20.1%
Hatcheries	1.1	1.7	0.8	0.4	0.7	0.3	0.9	-50.0%	-62.2%
Lambs	5.5	7.5	10.4	10.1	10.7	9.8	8.9	-8.9%	10.4%
Honey	9.7	11.9	17.1	12.4	12.3	13.7	12.7	11.0%	7.6%
All Other Livestock and Livestock Products	65.7	52.3	56.1	46.2	49.8	53.4	54.0	7.1%	-1.2%
<b>Total Livestock</b>	<b>1,372.9</b>	<b>1,484.9</b>	<b>1,523.2</b>	<b>1,466.3</b>	<b>1,539.8</b>	<b>1,612.5</b>	<b>1,477.4</b>	<b>4.7%</b>	<b>9.1%</b>
Agri-Stability	16.9	6.5	6.7	3.9	11.9	17.5	9.2	208.5%	91.4%
AgriInvest	11.3	8.2	7.7	8.2	8.2	8.0	8.7	-0.5%	-8.5%
Crop Insurance	13.7	12.2	9.4	12.3	11.2	4.4	11.8	-9.2%	-62.3%
Other Direct Payments	2.5	3.7	12.9	5.3	7.3	12.0	6.3	38.9%	89.5%
<b>Total Direct Program Payments</b>	<b>44.4</b>	<b>30.6</b>	<b>36.7</b>	<b>29.7</b>	<b>38.6</b>	<b>42.0</b>	<b>36.0</b>	<b>8.8%</b>	<b>16.6%</b>
<b>Total Farm Cash Receipts<sup>4</sup></b>	<b>2,882.7</b>	<b>3,036.9</b>	<b>3,187.8</b>	<b>3,119.1</b>	<b>3,252.6</b>	<b>3,449.1</b>	<b>3,095.8</b>	<b>6.0%</b>	<b>11.4%</b>

**Source:** Statistics Canada and Adapted from Statistics Canada. Table 32-10-0045-01 and Data by special request. (Accessed May 28, 2019).

**1** – Includes deferred grain receipts and liquidation of deferred grain receipts.

**2** – Includes mushroom and potato receipts.

**3** – Due to suppressed estimates for B.C. farm cash receipts in Nursery Products and in Sod in 2018, the 2018 values have been estimated using the shares of nursery FCR and sod FCR to B.C.'s total nursery and sod FCR in 2017, applied to B.C.'s total nursery and sod farm cash receipts in 2018.

**4** – Farm cash receipts (FCR) represent the sale of agricultural commodities, program payments received from government agencies, and payments received from private crop and livestock insurance programs within the calendar year. The method for establishing FCR is based on the system of National Accounts. Farm-to-farm sales between provinces are included as are all sales outside the sector, while all inter-farm sales within a province are excluded.

## FARM CASH RECEIPTS, BY AGRICULTURAL COMMODITY GROUP

(\$ '000)	2013	2014	2015	2016	2017	2018	Average 2013–2017	2018 vs. 2017 % Change	2018 vs. Average % Change
<b>Grains and Oilseeds</b>	<b>68,783</b>	<b>87,295</b>	<b>62,365</b>	<b>50,933</b>	<b>56,441</b>	<b>79,672</b>	<b>65,163</b>	<b>41.2%</b>	<b>22.3%</b>
Wheat	17,295	23,804	19,662	8,996	13,700	13,828	16,691	0.9%	-17.2%
Oats	11,511	8,067	9,283	8,019	7,980	9,169	8,972	14.9%	2.2%
Barley	8,940	11,775	5,353	5,673	5,574	7,377	7,463	32.3%	-1.2%
Canola (including rapeseed)	27,172	39,909	29,871	28,097	27,706	47,609	30,551	71.8%	55.8%
Deferred Grain Receipts <sup>1</sup>	-12,656	-9,234	-10,976	-10,841	-9,352	-7,754	-10,612	-17.1%	-26.9%
Liquidation of Deferred Grain Receipts <sup>2</sup>	16,521	12,974	9,172	10,989	10,833	9,443	12,098	-12.8%	-21.9%
<b>Tree Fruits</b>	<b>109,613</b>	<b>113,062</b>	<b>126,375</b>	<b>124,276</b>	<b>155,747</b>	<b>165,748</b>	<b>125,815</b>	<b>6.4%</b>	<b>31.7%</b>
Apples	52,399	47,450	48,364	50,614	55,453	59,955	50,856	8.1%	17.9%
Apricots	601	1,058	1,273	1,507	1,190	1,386	1,126	16.5%	23.1%
Cherries, Sour	na	130	na	199	140	na	156	na	na
Cherries, Sweet	44,848	49,618	61,083	56,608	84,744	88,941	59,380	5.0%	49.8%
Nectarines	800	1,265	1,325	1,589	1,135	1,309	1,223	15.3%	7.0%
Peaches	5,580	7,367	8,008	8,232	7,300	7,874	7,297	7.9%	7.9%
Pears	3,767	4,181	4,319	3,868	3,929	4,104	4,013	4.5%	2.3%
Plums and Prunes	na	1,993	na	1,659	1,856	na	1,836	na	na
<b>Berries, Grapes &amp; Other Small Fruits</b>	<b>205,051</b>	<b>233,694</b>	<b>276,592</b>	<b>277,755</b>	<b>274,584</b>	<b>308,176</b>	<b>253,535</b>	<b>12.2%</b>	<b>21.6%</b>
Blueberries	91,735	112,210	156,889	144,589	136,527	161,168	128,390	18.0%	25.5%
Cranberries	48,573	45,762	41,316	44,213	45,455	43,254	45,064	-4.8%	-4.0%
Raspberries	12,827	18,607	18,008	20,452	19,329	19,409	17,845	0.4%	8.8%
Saskatoon Berries	na	na	na	251	131	na	na	na	na
Strawberries	5,028	5,595	5,295	5,572	6,397	5,579	5,577	-12.8%	0.0%
Other Small Fruits	1,757	na	na	5,614	3,624	6,052	3,665	67.0%	65.1%
Grapes	44,893	46,947	49,764	57,064	63,121	72,583	52,358	na	38.6%
<b>Vegetables</b>	<b>241,407</b>	<b>252,414</b>	<b>271,259</b>	<b>321,112</b>	<b>322,805</b>	<b>331,495</b>	<b>281,799</b>	<b>2.7%</b>	<b>17.6%</b>
Fresh asparagus	692	737	810	755	816	857	762	5.0%	12.5%
Fresh green and wax beans	3,095	2,859	3,137	3,494	2,487	3,116	3,014	25.3%	3.4%
Fresh beets	3,921	3,016	3,913	3,978	4,516	4,898	3,869	8.5%	26.6%
Fresh broccoli	2,541	2,334	3,640	na	3,415	na	2,983	na	na
Fresh Brussels sprouts	1,845	2,698	2,928	2,945	4,456	4,616	2,974	3.6%	55.2%
Fresh cabbage	6,806	6,991	6,261	6,914	7,732	8,400	6,941	8.6%	21.0%
Fresh carrots	6,750	5,382	6,420	6,074	8,575	8,732	6,640	1.8%	31.5%
Fresh cauliflowers	585	932	1,582	1,590	918	1,386	1,121	51.0%	23.6%
Fresh celery	na	254	181	236	255	246	232	-3.5%	6.3%
Fresh sweet corn	7,620	9,617	8,835	9,847	7,391	8,455	8,662	14.4%	-2.4%
Fresh cucumbers and gherkins	1,676	2,292	2,481	2,329	2,207	2,393	2,197	8.4%	8.9%
Fresh garlic	3,944	4,420	5,383	5,068	3,422	2,743	4,447	-19.8%	-38.3%
Fresh shallots and green onions	2,148	2,156	2,445	2,157	1,637	1,870	2,109	14.2%	-11.3%
Fresh green peas	1,657	1,554	2,146	2,304	1,606	2,114	1,853	31.6%	14.1%
Fresh leeks	498	402	254	489	809	762	490	-5.8%	55.4%
Fresh lettuce	6,430	6,324	6,828	6,363	8,351	8,125	6,859	-2.7%	18.5%
Fresh mushrooms (including truffles)	na	138,692	142,071	171,358	173,785	177,278	156,477	2.0%	13.3%
Fresh dry onions (except green onions)	1,738	1,918	1,443	2,005	1,389	1,774	1,699	27.7%	4.4%
Fresh parsley	290	441	368	375	988	546	492	-44.7%	10.9%
Fresh parsnips	779	745	744	609	417	291	659	-30.2%	-55.8%
Fresh peppers	2,613	3,481	3,145	4,894	3,689	4,623	3,564	25.3%	29.7%



## FARM CASH RECEIPTS, BY AGRICULTURAL COMMODITY GROUP, continued

(\$ '000)	2013	2014	2015	2016	2017	2018	Average 2013–2017	2018 vs. 2017 % Change	2018 vs. Average % Change
Potatoes	34,077	30,673	37,566	47,574	47,881	49,544	39,554	3.5%	25.3%
Pumpkins	4,245	4,725	5,053	4,923	6,015	5,053	4,992	-16.0%	1.2%
Radishes	723	1,075	1,174	939	1,124	1,341	1,007	19.3%	33.2%
Rhubarb	na	739	700	na	2,138	na	1,192	na	na
Rutabagas & Turnips	1,742	1,831	1,882	1,595	2,086	2,110	1,827	1.2%	15.5%
Spinach	1,039	1,392	1,117	887	1,141	953	1,115	-16.5%	-14.5%
Squash & Zucchini	5,521	6,443	6,666	7,818	6,462	6,908	6,582	6.9%	5.0%
Tomatoes	2,662	3,250	3,754	4,444	3,644	3,722	3,551	2.1%	4.8%
Watermelons, Other Melons	979	761	1,474	2,159	2,382	na	1,551	na	na
Other Field Vegetables	7,468	4,280	6,858	12,640	11,071	10,755	8,463	-2.9%	27.1%
<b>Greenhouse Vegetables</b>	<b>305,301</b>	<b>296,591</b>	<b>298,398</b>	<b>298,443</b>	<b>301,892</b>	<b>299,233</b>	<b>300,125</b>	<b>-0.9%</b>	<b>-0.3%</b>
Fresh greenhouse cucumbers and gherkins	45,729	45,208	42,648	na	45,691	54,492	44,819	19.3%	21.6%
Fresh greenhouse peppers	136,995	129,135	135,251	141,050	132,360	127,930	134,958	-3.3%	-5.2%
Fresh greenhouse tomatoes	117,068	116,401	116,301	109,207	109,946	107,686	113,785	-2.1%	-5.4%
Other fresh greenhouse vegetables	na	na	na	2,118	na	na	2,118	na	na
<b>Floriculture, Nursery, Sod</b>	<b>489,390</b>	<b>483,144</b>	<b>516,770</b>	<b>464,236</b>	<b>469,453</b>	<b>464,394</b>	<b>484,599</b>	<b>-1.1%</b>	<b>-4.2%</b>
Floriculture products (except flower seeds)	277,134	274,056	299,117	294,621	301,077	289,738	289,201	-3.8%	0.2%
Nursery products <sup>3</sup> (except tree and shrub seeds)	201,862	199,531	206,990	158,240	156,387	162,000	184,602	3.6%	-12.2%
Sod <sup>3</sup>	10,393	9,557	10,662	11,375	11,989	12,000	10,795	0.1%	11.2%
<b>Other Crops</b>	<b>44,935</b>	<b>55,125</b>	<b>76,091</b>	<b>86,418</b>	<b>93,358</b>	<b>145,949</b>	<b>71,185</b>	<b>56.3%</b>	<b>105.0%</b>
Cannabis (licensed production)	na	na	na	14,729	22,283	61,901	18,506	177.8%	234.5%
Ginseng	1,464	2,360	2,920	2,798	3,329	1,824	2,574	-45.2%	-29.1%
Dry Peas	na	na	na	na	11,063	14,099	11,063	27.4%	27.4%
For & Grass Seed	260	367	274	535	211	512	329	142.7%	55.4%
Hay & Clover	20,277	24,999	34,774	38,211	35,789	40,508	30,810	13.2%	31.5%
Forest Products	5,596	5,936	6,326	6,593	6,870	7,532	6,264	9.6%	20.2%
Christmas Trees	3,272	3,511	4,416	4,844	5,533	8,845	4,315	59.9%	105.0%
Misc Crops	14,066	17,952	27,381	18,708	8,280	10,728	17,277	29.6%	-37.9%
<b>Livestock</b>	<b>1,372,858</b>	<b>1,484,930</b>	<b>1,523,210</b>	<b>1,466,312</b>	<b>1,539,778</b>	<b>1,612,464</b>	<b>1,477,418</b>	<b>4.7%</b>	<b>9.1%</b>
Cattle	148,157	209,807	232,756	172,036	173,998	164,234	187,351	-5.6%	-12.3%
Calves	34,259	70,276	78,466	50,579	66,984	91,313	60,113	36.3%	51.9%
Dairy	527,657	554,730	564,395	586,132	624,946	633,215	571,572	1.3%	10.8%
Hogs	30,500	37,063	32,163	32,906	32,312	31,317	32,989	-3.1%	-5.1%
Chickens	378,849	369,492	357,966	368,694	376,128	411,557	370,226	9.4%	11.2%
Turkeys	51,301	50,445	49,335	49,169	48,209	48,742	49,692	1.1%	-1.9%
Total eggs	120,143	119,731	123,809	137,663	143,637	154,945	128,997	7.9%	20.1%
Eggs for consumption	120,066	119,720	123,775	137,542	143,553	154,941	128,931	7.9%	20.2%
Eggs for hatching	77	12	34	121	84	4	66	-95.2%	-93.9%
Hatcheries	1,088	1,660	765	390	696	348	920	-50.0%	-62.2%
Hatcheries - chicken chicks	1,088	1,604	682	390	597	288	872	-51.8%	-67.0%
Hatcheries - turkey poults	na	56	84	na	99	60	48	-39.4%	25.5%
Sheep	na	na	na	na	na	371	na	na	na
Lambs	5,504	7,496	10,386	10,141	10,725	9,767	8,850	-8.9%	10.4%
Honey	9,744	11,904	17,072	12,419	12,308	13,660	12,689	11.0%	7.6%

## FARM CASH RECEIPTS, BY AGRICULTURAL COMMODITY GROUP, continued

(\$ '000)	2013	2014	2015	2016	2017	2018	Average 2013–2017	2018 vs. 2017 % Change	2018 vs. Average % Change
Furs	na	na	na	na	na	12,823	na	na	na
Miscellaneous livestock and livestock products	33,806	36,708	37,801	36,531	38,361	40,172	36,641	4.7%	9.6%
<b>Direct Program Payments</b>	<b>44,432</b>	<b>30,588</b>	<b>36,700</b>	<b>29,659</b>	<b>38,581</b>	<b>41,977</b>	<b>35,992</b>	<b>8.8%</b>	<b>16.6%</b>
<b>Total Farm Cash Receipts<sup>4</sup></b>	<b>2,882,650</b>	<b>3,036,909</b>	<b>3,187,760</b>	<b>3,119,144</b>	<b>3,252,638</b>	<b>3,449,109</b>	<b>3,095,820</b>	<b>6.0%</b>	<b>11.4%</b>

**Source:** Statistics Canada and Adapted from Statistics Canada. Table 32-10-0045-01 Farm cash receipts, annual and Data by special request. (Accessed May 28, 2019).

**1** - Deferred grain receipts include receipts from grain crops that are sold in a year other than the year they were produced.

**2** - Liquidations represent the deferred sales of crops that have been reviewed and revised by Statistics Canada, to properly reflect the year in which the crop was actually sold.

**3** - Due to suppressed estimates for B.C. farm cash receipts in Nursery Products and in Sod in 2018, the 2018 values have been estimated using the shares of nursery FCR and sod FCR to B.C.'s total nursery and sod FCR in 2017, applied to B.C.'s total nursery and sod farm cash receipts in 2018.

**4** - Farm cash receipts (FCR) represent the sale of agricultural commodities, program payments received from government agencies, and payments received from private crop and livestock insurance programs within the calendar year. The method for establishing FCR is based on the system of National Accounts. Farm-to-farm sales between provinces are included as are all sales outside the sector, while all inter-farm sales within a province are excluded.

na - not available.

**Note:** Averages are calculated on the data available for the period. Totals may not agree due to rounding.

## VALUE OF POLLINATION IN B.C.

Crop	Farm Gate Value (\$'000) (V)			Dependence <sup>1</sup> (D)	Proportion <sup>2</sup> (P)	Value of Pollination <sup>3</sup> (V x D x P)			2018 vs. 2017 % Change
	2016	2017	2018			2016	2017	2018	
<b>Field Crops</b>									
Blueberries	144,589	136,527	161,168	1.0	0.9	130,130	122,874	145,051	18.0%
Cranberries	46,675	43,086	43,580	1.0	0.9	42,008	38,777	39,222	1.1%
Sweet Cherries	56,608	84,744	88,941	1.0	0.9	50,947	76,270	80,047	5.0%
Apples	52,759	59,494	60,646	1.0	0.8	42,207	47,595	48,517	1.9%
Raspberries	20,739	20,161	19,436	1.0	0.7	14,517	14,113	13,605	-3.6%
Canola <sup>4</sup>	28,097	27,706	47,609	0.2	0.9	5,057	4,987	8,570	71.8%
Pears	3,908	4,100	4,476	1.0	0.9	3,517	3,690	4,028	9.2%
Peaches	8,232	7,300	7,874	0.4	0.8	2,634	2,336	2,520	7.9%
Strawberries	5,572	6,397	5,579	0.3	0.8	1,337	1,535	1,339	-12.8%
Plums & Prunes	1,659	1,856	x	0.8	0.9	1,194	1,336	na	na
Other Melons	1653	F	x	F	0.7	F	F	F	F
Apricots	1507	1190	1386	0.7	0.8	844	666	776	16.5%
Nectarines	1589	1,135	1,309	0.4	0.8	508	363	419	15.3%
Field Peppers	4894	3,689	4,623	0.9	1.0	4,405	3,320	4,161	25.3%
<b>Subtotal</b>	<b>378,481</b>	<b>397,385</b>	<b>446,627</b>			<b>299,307</b>	<b>317,864</b>	<b>348,255</b>	<b>9.6%</b>

## VALUE OF POLLINATION IN B.C., continued

Crop	Farm Gate Value (\$'000) (V)			Dependence <sup>1</sup> (D)	Proportion <sup>2</sup> (P)	Value of Pollination <sup>3</sup> (V x D x P)			2018 vs. 2017 % Change
	2016	2017	2018			2016	2017	2018	
<b>Greenhouse crops</b>									
Peppers <sup>5</sup>	141,050	132,360	127,930	0.9	1.0	126,945	119,124	115,137	-3.3%
Tomatoes <sup>6</sup>	109,207	111,516	107,686	0.9	1.0	98,286	100,364	96,917	-3.4%
<b>Subtotal</b>	<b>250,258</b>	<b>243,875</b>	<b>235,616</b>			<b>225,232</b>	<b>219,488</b>	<b>212,054</b>	<b>-3.4%</b>
<b>Total Value</b>	<b>628,739</b>	<b>641,260</b>	<b>682,243</b>			<b>524,539</b>	<b>537,351</b>	<b>560,309</b>	<b>4.3%</b>

**Source:** Statistics Canada and Adapted from Statistics Canada. Table: 32-10-0365-01, 32-10-0456-01, 32-10-0364-01, and 32-10-0045-01, unless otherwise specified. (Accessed June 21, 2019.)

**1** - Degree of dependency on insect pollinators (in fractions); Source: Canadian Association of Professional Apiculturists (CAPA, Crop Pollination guide (ISBN 0-88955-416-1)).

**2** - Fractional proportion of all pollinators (honey and bumble bees); Source: Canadian Association of Professional Apiculturists (CAPA, Crop Pollination guide (ISBN 0-88955-416-1)).

**3** - Estimated annual crop value attributable to honey bee and bumble bee pollination.

**F** - Too unreliable to be published.

**4** - Due to the unavailability of Farm Gate Value, Farm Cash Receipts have been used instead.

**5** - Bumble bees and honey bees are used in greenhouse pepper pollination.

**6** - Only bumble bees are used in greenhouse tomato pollination.

## FARM GATE VALUE OF AQUACULTURE COMMODITIES

Species Group	\$ Millions						Average 2014-2017	2018 vs. 2017 % Change	2018 vs. Average % Change
	2013	2014	2015	2016	2017	2018			
Salmon	416.3	398.5	473.5	743.3	728.6	772.5	586.0	6.0%	31.8%
Geoduck & Other Clams	7.1	6.0	6.7	5.9	7.3	6.6	6.5	-9.6%	1.9%
Oysters	12.9	13.0	14.7	15.3	14.7	13.2	14.4	-10.2%	-8.5%
Mussels & Other Shellfish <sup>1</sup>	2.6	3.1	4.2	3.5	1.7	3.1	3.1	82.4%	-0.8%
Other <sup>2</sup>	12.1	12.9	8.8	13.4	17.8	19.2	13.2	7.9%	45.2%
<b>Total</b>	<b>451.0</b>	<b>433.5</b>	<b>507.9</b>	<b>781.4</b>	<b>770.1</b>	<b>814.6</b>	<b>623.2</b>	<b>5.8%</b>	<b>30.7%</b>

**Source:** B.C. Ministry of Agriculture, August 2019. A 4-year average (2014-17) is used for aquaculture to enable comparison with the 4-year average of wild commercial fisheries (which accounts for cyclical fluctuations in wild fish populations).

**1** - Includes scallops and crayfish.

**2** - Includes freshwater trout, tilapia, barramundi, sturgeon, sablefish, Arctic char, shrimp, microalgae, kelp and seaweeds.

## LANDED VALUE OF WILD COMMERCIAL FISHERIES

Species Group	\$ Millions						Average 2014-2017	2018 vs. 2017 % Change	2018 vs. Average % Change
	2013	2014	2015	2016	2017	2018			
Salmon	45.2	137.9	61.9	77.9	55.3	111.7	83.3	102.0%	34.2%
Herring	17.0	15.7	15.5	22.5	28.4	21.7	20.5	-23.6%	5.7%
Groundfish <sup>1</sup>	111.7	116.7	139.6	151.7	158.8	150.4	141.7	-5.3%	6.1%
Shellfish <sup>2</sup>	125.7	142.0	145.2	124.8	138.2	176.8	137.6	27.9%	28.5%
Other <sup>3</sup>	24.7	16.4	15.3	21.9	17.2	15.8	17.7	-8.1%	-10.7%
<b>Total</b>	<b>324.3</b>	<b>428.7</b>	<b>377.5</b>	<b>398.8</b>	<b>397.9</b>	<b>476.4</b>	<b>400.7</b>	<b>19.7%</b>	<b>18.9%</b>

**Source:** B.C. Ministry of Agriculture, August 2019. A 4-year average (2014-17) is used to account for cyclical fluctuations in wild fish populations.

**1** - Includes arrowtooth flounders, dogfish, hake, halibut, lingcod, Pacific cod, pollock, rockfish, sablefish, skates, soles, flounders and other groundfish.

**2** - Includes clams, crabs, geoducks, prawns, scallops, sea cucumbers, sea urchins, shrimp, octopuses, squid, krill, gooseneck barnacles and other shellfish.

**3** - Includes mackerel, tuna, other finfish, kelp, sea vegetables and seaweeds.

## VALUE OF FOOD AND BEVERAGE PROCESSING SALES

Category	\$ Millions						Average 2014–2017	2018 vs. 2017 % Change	2018 vs. Average % Change
	2013	2014	2015	2016	2017	2018			
Animal Food Products	645.8	694.9	742.3	757.0	760.2	775.0	720.0	1.9%	7.6%
Grains and Oilseed Milling	x	x	x	x	x	x	na	na	na
Sugar and Confectionary	x	x	x	x	x	x	na	na	na
Fruit and Vegetables	380.4	393.1	448.3	506.9	599.4	624.1	465.6	4.1%	34.0%
Dairy Products	1,169.8	1,169.4	1,256.7	1,309.9	1,166.9	1,411.0	1,214.5	20.9%	16.2%
Meat and Meat Products	1,857.2	1,723.7	1,709.6	1,593.5	1,540.8	1,567.2	1,685.0	1.7%	-7.0%
Seafood Products	583.7	671.9	767.4	882.0	829.8	529.8	747.0	-36.1%	-29.1%
Bakeries and Tortillas	549.9	646.7	729.4	867.7	1,048.0	860.6	768.3	-17.9%	12.0%
Other Food Industries	1,131.6	1,328.6	1,467.9	1,569.2	1,656.5	2,007.5	1,430.8	21.2%	40.3%
<b>Total Food Processing</b>	<b>6,735.0</b>	<b>7,057.9</b>	<b>7,617.5</b>	<b>7,930.4</b>	<b>8,032.7</b>	<b>8,357.6</b>	<b>7,474.7</b>	<b>4.0%</b>	<b>11.8%</b>
Soft Drinks and Ice	333.1	330.7	335.7	371.6	362.6	409.4	346.8	12.9%	18.1%
Breweries	545.7	567.9	607.5	702.1	749.6	830.7	634.5	10.8%	30.9%
Wineries	305.4	397.8	488.1	592.6	652.0	612.2	487.2	-6.1%	25.6%
Distilleries	1.4	0.8	1.8	2.5	5.7	na	2.4	na	na
Tobacco	na	na	na	na	na	na	na	na	na
<b>Total Beverage and Tobacco Processing<sup>1</sup></b>	<b>1,185.7</b>	<b>1,297.3</b>	<b>1,433.0</b>	<b>1,664.0</b>	<b>1,764.6</b>	<b>1,854.1</b>	<b>1,468.9</b>	<b>5.1%</b>	<b>26.2%</b>
<b>Total Food and Beverage Processing</b>	<b>7,920.6</b>	<b>8,355.2</b>	<b>9,050.5</b>	<b>9,594.4</b>	<b>9,797.3</b>	<b>10,211.7</b>	<b>8,943.6</b>	<b>4.2%</b>	<b>14.2%</b>

**Source:** Statistics Canada and Adapted from Statistics Canada. Table 16–10–0048–01 (formerly CANSIM 304–0015) (accessed May 23, 2019).

**1** – Total Beverage and Tobacco Manufacturing Shipments estimates are suppressed in 2013, 2014 2015, 2017 and 2018; Estimates provided for these years use the Total Beverage Manufacturing Shipments estimate as a best proxy.

**x** – Suppressed to meet the confidentiality requirements of the Statistics Act.

**na** – not available.



# FARM INCOME AND EXPENSES

## FARM OPERATING EXPENSES AND DEPRECIATION CHARGES

Type	\$ Millions						Average 2013–2017	2018 vs. 2017 % Change	2018 vs. Average % Change
	2013	2014	2015	2016	2017	2018			
Cash Wages, Room and Board	626.9	639.4	648.6	669.6	695.2	735.9	655.9	5.8%	12.2%
Family Wages	159.9	161.1	162.1	167.4	173.8	184.0	164.9	5.8%	11.6%
Non-Family Wages	467.0	478.3	486.4	502.2	521.4	551.9	491.1	5.8%	12.4%
Commercial Feed	493.0	485.0	511.1	531.5	536.3	591.6	511.4	10.3%	15.7%
Interest	168.9	179.8	176.8	177.2	183.8	212.4	177.3	15.6%	19.8%
Machinery Repairs	120.9	123.3	133.1	136.0	141.2	145.7	130.9	3.2%	11.3%
Custom Work	117.4	112.7	126.2	116.9	127.2	135.4	120.1	6.4%	12.7%
Fertilizer and Lime	124.7	124.5	131.9	130.7	128.3	130.4	128.0	1.6%	1.8%
Commercial Seed	92.6	95.5	100.5	101.7	107.5	111.7	99.6	3.9%	12.2%
Machinery Fuel	121.4	124.2	104.6	94.3	103.6	124.3	109.6	20.0%	13.4%
Twine, Wire and Containers	99.9	95.9	96.8	99.3	100.5	106.5	98.5	6.0%	8.2%
Legal and Accounting Fees	80.3	85.9	90.2	97.3	102.1	114.1	91.2	11.7%	25.1%
Other Expenses	79.4	79.8	83.0	87.9	88.4	94.7	83.7	7.1%	13.1%
Electricity	62.6	66.0	69.6	73.6	79.5	84.0	70.3	5.6%	19.6%
Livestock and Poultry Purchases	42.1	36.1	52.4	49.4	70.5	52.5	50.1	-25.6%	4.8%
Cash Rent	57.0	59.0	63.7	67.4	71.1	79.2	63.6	11.4%	24.4%
Repairs to Buildings and Fences	60.4	61.3	67.4	69.6	72.6	75.6	66.2	4.2%	14.2%
Business Insurance	45.1	46.2	48.7	51.1	52.7	56.5	48.8	7.0%	15.8%
Pesticides	42.6	42.7	43.5	45.3	43.2	44.4	43.5	2.7%	2.1%
Heating Fuel	52.1	55.0	47.7	42.4	47.2	48.3	48.9	2.3%	-1.1%
Veterinary Fees	41.9	42.8	45.4	47.2	48.6	50.3	45.2	3.5%	11.3%
Property Taxes	21.9	22.0	22.8	23.9	24.1	27.0	23.0	11.9%	17.7%
Telephone	20.8	21.7	22.2	22.5	22.3	22.5	21.9	1.1%	2.9%
Crop and Hail Insurance	6.4	6.4	6.7	7.0	7.0	7.4	6.7	6.3%	10.8%
Share Rent	3.3	2.7	3.3	4.0	3.7	3.3	3.4	-11.7%	-3.8%
Irrigation	3.2	3.2	3.3	3.3	3.3	3.4	3.3	0.5%	2.2%
Stabilization Premiums	0.0	0.6	0.3	0.4	1.0	0.4	0.4	-55.2%	-2.5%
<b>Total Operating Expenses before Rebates</b>	<b>2,584.7</b>	<b>2,611.7</b>	<b>2,699.9</b>	<b>2,749.6</b>	<b>2,861.2</b>	<b>3,057.3</b>	<b>2,701.4</b>	<b>6.9%</b>	<b>13.2%</b>
Total Rebates	6.7	6.7	6.6	6.6	7.3	7.5	6.8	3.1%	11.1%
<b>Total Operating Expenses after Rebates</b>	<b>2,578.0</b>	<b>2,605.0</b>	<b>2,693.3</b>	<b>2,743.0</b>	<b>2,853.9</b>	<b>3,049.8</b>	<b>2,694.6</b>	<b>6.9%</b>	<b>13.2%</b>
Building Depreciation	200.0	206.3	203.7	212.1	224.6	237.0	209.4	5.6%	13.2%
Machinery Depreciation	186.8	192.9	203.3	204.2	208.0	209.9	199.0	0.9%	5.5%
<b>Total Depreciation</b>	<b>386.8</b>	<b>399.2</b>	<b>407.1</b>	<b>416.3</b>	<b>432.5</b>	<b>446.9</b>	<b>408.4</b>	<b>3.3%</b>	<b>9.4%</b>
<b>Total Expenses and Depreciation</b>	<b>2,964.8</b>	<b>3,004.2</b>	<b>3,100.4</b>	<b>3,159.3</b>	<b>3,286.4</b>	<b>3,496.8</b>	<b>3,103.0</b>	<b>6.4%</b>	<b>12.7%</b>

**Source:** Statistics Canada and Adapted from Statistics Canada. Table 002-0005, CANSIM database (accessed July 31, 2019).

**na** – not available.

**Note** – Totals may not agree due to rounding.



## FARM INCOME IN B.C.

(\$ Millions)	2013	2014	2015	2016	2017	2018	Average 2013–2017	2018 vs. 2017 % Change	2018 vs. Average % Change
Crop Receipts	1,465.4	1,521.4	1,627.9	1,623.2	1,674.3	1,794.7	1,582.4	7.2%	13.4%
Livestock Receipts	1,372.9	1,484.9	1,523.2	1,466.3	1,539.8	1,612.5	1,477.4	4.7%	9.1%
Program Receipts	44.4	30.6	36.7	29.7	38.6	42.0	36.0	8.8%	16.6%
<b>Total Farm Cash Receipts</b>	<b>2,882.7</b>	<b>3,036.9</b>	<b>3,187.8</b>	<b>3,119.1</b>	<b>3,252.6</b>	<b>3,449.1</b>	<b>3,095.8</b>	<b>6.0%</b>	<b>11.4%</b>
Total Operating Expenses	2,578.0	2,605.0	2,693.3	2,743.0	2,853.9	3,049.8	2,694.6	6.9%	13.2%
<b>Net Cash Income</b>	<b>304.6</b>	<b>431.9</b>	<b>494.5</b>	<b>376.1</b>	<b>398.8</b>	<b>399.3</b>	<b>401.2</b>	<b>0.1%</b>	<b>-0.5%</b>
Total Income-in-Kind	4.2	5.1	5.6	5.1	5.2	5.4	5.0	2.3%	6.6%
Total Depreciation	386.8	399.2	407.1	416.3	432.5	446.9	408.4	3.3%	9.4%
<b>Realized Net Income</b>	<b>-78.0</b>	<b>37.8</b>	<b>93.0</b>	<b>-35.1</b>	<b>-28.5</b>	<b>-42.3</b>	<b>-2.2</b>	<b>48.4%</b>	<b>1857.8%<sup>1</sup></b>
Value of Inventory Change	58.5	-49.3	43.7	38.3	36.1	31.0	25.5	-14.2%	21.6%
<b>Total Net Income</b>	<b>-19.5</b>	<b>-11.5</b>	<b>136.8</b>	<b>3.1</b>	<b>7.6</b>	<b>-11.3</b>	<b>23.3</b>	<b>-249.0%<sup>1</sup></b>	<b>-148.6%<sup>1</sup></b>

**Source:** Statistics Canada and Adapted from Statistics Canada. Cansim Tables 002-0001 and 002-0009. (Accessed: July 31, 2019)

<sup>1</sup> – The calculation of per cent change involving a negative number yields a counter- intuitive, although mathematically correct result.

## TOTAL AGRICULTURAL FARM DEBT OUTSTANDING

	\$ Millions						Average 2013–2017	2018 vs. 2017 % Change	2018 vs. Average % Change
Type of Debt	2013	2014	2015	2016	2017	2018			
<b>Federal Gov't Agencies</b>	2,505.2	2,518.3	2,570.2	2,743.8	2,837.4	2,799.4	2,693.8	-1.3%	3.9%
Chartered Banks	2,018.3	2,312.9	2,574.5	2,457.0	2,569.1	2,694.9	2,521.7	4.9%	6.9%
Supply Companies and Private Individuals	833.8	807.1	780.4	879.0	854.8	871.0	838.5	1.9%	3.9%
Credit Unions	234.5	241.7	258.7	247.1	260.5	265.7	254.7	2.0%	4.3%
Insurance, Trust Co. & Other	39.9	42.8	45.4	47.2	74.2	95.1	60.9	28.1%	56.1%
Advance Payment Programs	26.8	32.9	29.9	33.5	32.6	33.3	32.5	2.0%	2.5%
Provincial Gov't Agencies	0.1	0.1	0.1	0.0	0.0	0.0	0.0	0.0%	0.0%
<b>Total Debt Outstanding</b>	<b>5,658.6</b>	<b>5,955.9</b>	<b>6,259.2</b>	<b>6,407.7</b>	<b>6,628.6</b>	<b>6,759.4</b>	<b>6,402.1</b>	<b>2.0%</b>	<b>5.6%</b>

**Source:** Statistics Canada and Adapted from Statistics Canada. Table 32-10-0051-01 (formerly CANSIM 002-0008), (accessed: August 1, 2019).

# EMPLOYMENT AND OTHER ECONOMIC INDICATORS

## EMPLOYMENT IN THE B.C. AGRICULTURE, FOOD AND SEAFOOD SECTOR

Sector <sup>2</sup>	Estimated Number of Persons Employed <sup>1</sup>						Average 2013–2017	2018 vs. 2017 % Change	2018 vs. Average % Change
	2013	2014	2015	2016	2017	2018			
<b>Agriculture<sup>3</sup></b>	<b>26,500</b>	<b>23,135</b>	<b>21,615</b>	<b>22,565</b>	<b>23,950</b>	<b>22,410</b>	<b>23,553</b>	<b>-6.4%</b>	<b>-4.9%</b>
Crop Production	14,000	12,400	12,400	13,500	12,000	13,000	12,860	8.3%	1.1%
Oilseed & Grain	x	x	x	x	x	x	na	na	na
Vegetable & Melon	x	x	x	x	x	x	na	na	na
Fruit & Tree Nut	2,190	3,645	3,940	5,125	2,875	2,855	3,555	-0.7%	-19.7%
Greenhouse, Nursery & Floriculture	8,230	5,440	5,415	4,230	4,815	6,085	6	26.4%	8.2%
Other Crop	x	2,145	1,875	2,790	2,790	1,915	2,400	-31.4%	-20.2%
Animal Production <sup>3</sup>	8,800	6,835	6,215	7,065	7,950	7,210	7,433	-9.3%	-2.2%
Cattle	4,125	3,335	3,085	3,395	3,835	3,500	3,555	-8.7%	-1.5%
Hog & Pig	x	x	x	x	x	x	na	na	na
Poultry & Egg	x	x	x	x	2,270	1,585	2,270	-30.2%	-30.2%
Sheep & Goat	x	x	x	x	x	x	na	na	na
Other Animal	3,190	2,270	1,585	2,730	1,690	1,855	2,293	9.8%	-19.1%
Support Activities for Agriculture	2,000	2,200	1,600	x	2,400	1,600	2,050	-33.3%	-22.0%
Support Activities for Crop Production	x	x	x	x	1,770	x	1,770	na	na
Support Activities for Animal Production	x	x	x	x	x	x	na	na	na
Mixed farming	1,600	1,690	x	x	1,540	x	1,610	na	na
<b>Seafood</b>	<b>3,085</b>	<b>3,085</b>	<b>2,125</b>	<b>3,420</b>	<b>4,585</b>	<b>4,505</b>	<b>3,260</b>	<b>-1.7%</b>	<b>38.2%</b>
Aquaculture <sup>4</sup>	1,500	1,165	585	1,835	2,250	1,190	1,467	-47.1%	-18.9%
Commercial Fishing	1,585	2,020	1,540	1,585	2,335	3,315	1,813	42.0%	82.8%
<b>Total Agriculture and Seafood</b>	<b>29,585</b>	<b>26,220</b>	<b>23,740</b>	<b>25,895</b>	<b>28,535</b>	<b>26,915</b>	<b>25,346</b>	<b>-2.1%</b>	<b>1.5%</b>
<b>Food and Beverage Processing</b>	<b>26,700</b>	<b>28,100</b>	<b>33,000</b>	<b>36,900</b>	<b>32,600</b>	<b>36,500</b>	<b>31,460</b>	<b>12.0%</b>	<b>16.0%</b>
Food Processing	21,900	21,900	26,600	29,500	25,400	29,600	25,060	16.5%	18.1%
Animal Food Products	x	x	x	1,770	x	x	1,770	na	na
Grains and Oilseed Milling	x	x	x	x	x	x	na	na	na
Sugar and Confectionary	x	x	x	x	1,895	3,270	1,895	72.60%	72.60%
Fruit and Vegetables	x	1,645	1,500	x	2,665	2,730	1,937	2.40%	41.0%
Dairy Products	x	x	3,320	1,750	1,605	2,895	2,225	80.4%	30.1%
Meat and Meat Products	4,020	4,085	4,540	7,940	4,540	3,665	5,025	-19.3%	-27.1%
Seafood Products	2,335	3,440	2,645	2,585	2,290	3,415	2,659	49.1%	28.4%
Bakeries & Tortillas	6,640	5,665	7,415	6,915	6,290	7,415	6,585	17.9%	12.6%
Other Food Processing	4,460	4,440	4,980	5,500	4,940	5,230	4,864	5.9%	7.5%
Beverage and Tobacco Processing	4,800	6,200	6,400	7,400	7,200	6,900	6,400	-4.2%	7.8%
Beverage Manufacturing	4,800	6,200	6,400	6,900	7,200	6,900	6,300	-4.2%	9.5%
Tobacco Manufacturing	x	x	x	x	x	x	na	na	na
<b>Total Agriculture, Food and Seafood Employment</b>	<b>56,285</b>	<b>54,320</b>	<b>56,740</b>	<b>62,885</b>	<b>61,135</b>	<b>63,415</b>	<b>58,273</b>	<b>3.7%</b>	<b>8.8%</b>

**Source:** Statistics Canada and Adapted from Statistics Canada. Labour Force Survey (unpublished data) reproduced and distributed on an "as is" basis with the permission of Statistics Canada. Prepared by B.C. Stats, unless otherwise specified (Accessed June 26, 2019).

**1** - Excludes Temporary Foreign Workers and Seasonal Agricultural Workers.

**2** - The employment estimates in this table are based on the Labour Force Survey which estimates the number of persons whose primary residence is in B.C., who are employed and whose job or business usually worked the most hours is in the Agriculture, Food

and Seafood sectors.

**3** - Estimates for Aquaculture have been subtracted from the Animal Production total and reported separately under Seafood.

**4** - Aquaculture numbers below 1,500 prepared by BC Stats.

**x** - Suppressed to meet the confidentiality requirements of the Statistics Act.

**Note** - Totals may not agree due to rounding.

## OTHER AGRICULTURE, FOOD AND SEAFOOD SECTOR RELATED EMPLOYMENT

Type <sup>2</sup>	Estimated Number of Persons Employed <sup>1</sup>						Average 2013–2017	2018 vs. 2017 % Change	2018 vs. Average % Change
	2013	2014	2015	2016	2017	2018			
<b>Wholesalers</b>	<b>15,515</b>	<b>14,980</b>	<b>14,600</b>	<b>17,065</b>	<b>12,900</b>	<b>15,200</b>	<b>15,012</b>	<b>17.8%</b>	<b>1.3%</b>
<b>Farm Products and Agricultural Wholesalers</b>	<b>1,915</b>	<b>1,980</b>	<b>x</b>	<b>1,565</b>	<b>x</b>	<b>x</b>	<b>1,773</b>	<b>na</b>	<b>na</b>
Farm product merchant wholesalers	x	x	x	x	x	x	na	na	na
Agricultural supplies merchant wholesalers	1,915	1,980	x	1,565	x	x	1,773	na	na
<b>Food, Beverage and Tobacco Wholesaler</b>	<b>1,460</b>	<b>1,300</b>	<b>1,460</b>	<b>1,550</b>	<b>1,290</b>	<b>1,520</b>	<b>1,412</b>	<b>17.8%</b>	<b>7.6%</b>
Food merchant wholesalers	12,375	9,710	11,585	14,020	9,645	12,125	11,467	25.7%	5.7%
Beverage merchant wholesalers	1,710	3,040	2,960	x	2,835	2,730	2,636	-3.7%	3.6%
Cigarette and tobacco product wholesalers	x	x	x	x	x	x	na	na	na
<b>Food and Beverage Stores</b>	<b>70,700</b>	<b>72,500</b>	<b>63,000</b>	<b>66,800</b>	<b>75,900</b>	<b>77,600</b>	<b>68,780</b>	<b>2.2%</b>	<b>11.2%</b>
Grocery stores	53,940	60,165	52,980	53,105	59,085	60,665	55,855	2.7%	8.6%
Specialty food stores	8,415	5,940	4,790	6,500	10,125	10,190	7,154	0.6%	42.4%
Beer, Wine, and Liquor Stores	8,335	6,395	5,270	7,125	6,665	6,750	6,758	1.3%	-0.1%
<b>Florists</b>	<b>1,940</b>	<b>1,875</b>	<b>x</b>	<b>x</b>	<b>x</b>	<b>x</b>	<b>1,908</b>	<b>na</b>	<b>na</b>
<b>Food Services and Drinking Places</b>	<b>141,600</b>	<b>145,700</b>	<b>145,500</b>	<b>143,800</b>	<b>144,800</b>	<b>157,000</b>	<b>144,280</b>	<b>8.4%</b>	<b>8.8%</b>
Special food services	6,690	6,895	7,020	7,540	6,540	6,460	6,937	-1.2%	-6.9%
Drinking places (alcoholic beverages)	6,835	5,895	5,895	5,960	4,190	4,440	5,755	6.0%	-22.8%
Restaurants, full-service and limited-service	128,145	132,875	132,605	13,035	134,085	146,065	131,609	8.9%	11.0%
<b>Total Other Agriculture, Food and Seafood Employment</b>	<b>227,815</b>	<b>233,180</b>	<b>223,100</b>	<b>227,665</b>	<b>233,600</b>	<b>249,800</b>	<b>229,072</b>	<b>6.9%</b>	<b>9.0%</b>

**Source:** Statistics Canada and Adapted from Statistics Canada. Labour Force Survey (unpublished data) reproduced and distributed on an "as is" basis with the permission of Statistics Canada. Prepared by B.C. Stats, unless otherwise specified (Accessed June 26, 2019).

**1** – Excludes Temporary Foreign Workers and Seasonal Agricultural Workers.

**2** – The employment estimates in this table are based on the Labour Force Survey which estimates the number of persons whose primary residence is in B.C., who are employed and whose job or business usually worked the most hours is in the Agriculture, Food and Seafood sectors.

**x** – Suppressed to meet the confidentiality requirements of the Statistics Act.

**Note** – Totals may not agree due to rounding.

## TEMPORARY FOREIGN WORKERS IN B.C. AGRICULTURAL OCCUPATIONS

Type	2013	2014	2015	2016	2017	2018	Average 2013–2017	2018 vs. 2017 % Change	2018 vs. Average % Change
<b>Total Temporary Foreign Workers (TFW)<sup>1</sup></b>	<b>5,465</b>	<b>5,655</b>	<b>6,060</b>	<b>6,685</b>	<b>7,575</b>	<b>10,645</b>	<b>6,288</b>	<b>40.5%</b>	<b>69.3%</b>

**Source:** Immigration, Refugees and Citizenship Canada (IRCC) and Adapted from IRCC. 2012–2014 (<https://open.canada.ca/data/en/dataset/67fd1fae-4950-4018-a491-62e60cbd6974>), 2015–2017 (<https://open.canada.ca/data/en/dataset/360024f2-17e9-4558-bfc1-3616485d65b9>) (accessed June 2019). Existing datasets on open.canada.ca are not revised when new datasets are released.

**1** – Seasonal Agricultural Worker Program. Includes all work permits that were effective within a given year, regardless of the duration of the work permit.

## CONTRIBUTION TO GDP BY SECTOR

Sector	Millions of Chained 2012 Dollars <sup>1</sup>					
	2013	2014	2015	2016	2017	2018
Crop production (excludes unlicensed cannabis)	726.2	694.6	767.7	775.0	770.0	990.2
Animal production (except aquaculture)	396.2	403.8	408.2	418.0	440.0	457.5
Support activities for crop and animal production	116.3	119.2	127.1	121.6	127.6	121.0
<b>Total Agriculture<sup>3</sup></b>	<b>1,239</b>	<b>1,218</b>	<b>1,303</b>	<b>1,315</b>	<b>1,338</b>	<b>1,569</b>
Animal Aquaculture	123.8	102.9	166.0	166.7	161.9	175.5
Commercial Fishing <sup>4</sup>	172.3	195.5	195.3	182.5	170.8	171.1
<b>Total Seafood<sup>3</sup></b>	<b>296</b>	<b>298</b>	<b>361</b>	<b>349</b>	<b>333</b>	<b>347</b>
Food Manufacturing	1,916.4	1,975.6	2,018.3	2,080.5	2,152.7	2,155.4
Animal food manufacturing	95.6	81.0	87.6	90.2	92.9	91.5
Sugar and confectionery product manufacturing	136.0	112.1	131.2	107.8	110.3	104.9
Fruit and vegetable preserving and specialty food manufacturing	131.4	120.1	141.7	159.0	184.8	181.8
Dairy product manufacturing	251.9	268.8	244.7	243.4	236.7	270.4
Meat product manufacturing	438.4	422.1	423.1	397.3	380.4	389.1
Seafood product preparation and packaging	188.2	212.5	220.2	248.8	218.6	182.8
Miscellaneous food manufacturing	672.3	759.6	783.4	857.2	960.9	954.8
Grain and oilseed milling	22.1	24.5	30.3	32.5	33.3	30.4
Bakeries and tortilla manufacturing	295.8	348.3	345.4	400.7	478.2	414.0
Other food manufacturing	354.0	387.7	407.5	422.9	447.6	512.1
Beverage and Tobacco Manufacturing	695.3	763.4	822.1	936.5	990.8	994.5
Soft drink and ice manufacturing	192.8	187.4	201.5	218.1	210.3	238.4
Breweries	242.7	282.7	300.2	343.2	360.1	392.7
Wineries and distilleries	259.7	291.9	319.1	372.4	415.1	361.3
Tobacco manufacturing	0.8	0.2	0.3	0.0	0.0	0.0
<b>Total Food and Beverage Manufacturing<sup>3</sup></b>	<b>2,612</b>	<b>2,739</b>	<b>2,840</b>	<b>3,017</b>	<b>3,144</b>	<b>3,150</b>
<b>Total Agriculture, Food and Seafood GDP<sup>3</sup></b>	<b>4,147</b>	<b>4,255</b>	<b>4,505</b>	<b>4,681</b>	<b>4,814</b>	<b>5,065</b>
<b>Total B.C. GDP (excludes unlicensed cannabis)</b>	<b>209,624</b>	<b>217,078</b>	<b>222,124</b>	<b>229,570</b>	<b>238,767</b>	<b>244,549</b>
	Percent of B.C. GDP					
Crop and Animal (less Aquaculture) Production	0.5%	0.5%	0.5%	0.5%	0.5%	0.6%
Agri Support	0.1%	0.1%	0.1%	0.1%	0.1%	0.0%
<b>Total Agriculture</b>	<b>0.6%</b>	<b>0.6%</b>	<b>0.6%</b>	<b>0.6%</b>	<b>0.6%</b>	<b>0.6%</b>
Aquaculture	0.1%	0.0%	0.1%	0.1%	0.1%	0.1%
Commercial Fishing	0.1%	0.1%	0.1%	0.1%	0.1%	0.1%
<b>Total Seafood</b>	<b>0.1%</b>	<b>0.1%</b>	<b>0.2%</b>	<b>0.2%</b>	<b>0.1%</b>	<b>0.1%</b>
Food Processing	0.9%	0.9%	0.9%	0.9%	0.9%	0.9%
Beverage and Tobacco Processing	0.3%	0.4%	0.4%	0.4%	0.4%	0.4%
<b>Total Food and Beverage Processing</b>	<b>1.2%</b>	<b>1.3%</b>	<b>1.3%</b>	<b>1.3%</b>	<b>1.3%</b>	<b>1.3%</b>
<b>Total Agriculture, Seafood and Food &amp; Beverage Processing</b>	<b>2.0%</b>	<b>2.0%</b>	<b>2.0%</b>	<b>2.0%</b>	<b>2.0%</b>	<b>2.1%</b>

**Source:** Statistics Canada and Adapted from Statistics Canada, Table 36-10-0402-01 Gross domestic product (GDP). (Accessed May 2, 2019).

**1** - A number of changes and updates were made to Statistics Canada's GDP estimates in the November 8, 2018 and May 1, 2019 data releases, including the reference year 2012 instead of 2007; and the inclusion of cannabis production activities, following the legalization of non-medicinal cannabis in Canada on October 17, 2018. (See the source for a full list of the changes and updates to this data series.)

**2** - The process of chaining takes into account fluctuations in price which will occur over time. In addition, chaining preserves the original growth rates within sectors and industries of the economy. For the chained dollars, the aggregates are not equal to the sum of their components.

**3** - Totals are estimated by summing the component parts.

**4** - Commercial Fishing GDP is estimated using GDP for Fishing, Hunting and Trapping (NAICS 114000) as a proxy.

## FARM PRODUCT PRICE INDEX

(2012=100)	2013	2014	2015	2016	2017	2018	2018 vs. 2017 % Change	2018 vs. Average % Change	2017 vs. Average % Change
<b>Total index</b>	<b>102.8</b>	<b>107.1</b>	<b>112.8</b>	<b>110.0</b>	<b>111.2</b>	<b>111.2</b>	<b>108.8</b>	<b>0.0%</b>	<b>2.2%</b>
<b>Total crops</b>	<b>103.3</b>	<b>101.6</b>	<b>109.3</b>	<b>111.8</b>	<b>114.0</b>	<b>114.0</b>	<b>108.0</b>	<b>0.0%</b>	<b>5.6%</b>
Grains <sup>1</sup>	105.6	84.6	93.4	89.0	90.9	90.9	92.7	0.0%	-1.9%
Oilseeds	88.0	76.5	82.3	81.8	84.4	84.4	82.6	0.0%	2.2%
Fresh fruit	97.4	91.7	97.5	97.6	99.3	99.3	96.7	0.0%	2.8%
Fresh vegetables (except potatoes and pulse crops)	107.8	109.9	117.6	122.3	125.0	125.0	116.5	0.0%	7.2%
Fresh potatoes	100.8	98.3	110.1	108.3	115.3	115.3	106.6	0.0%	8.2%
<b>Total livestock and animal products</b>	<b>102.5</b>	<b>112.2</b>	<b>116.0</b>	<b>107.6</b>	<b>107.8</b>	<b>107.8</b>	<b>109.2</b>	<b>0.0%</b>	<b>-1.3%</b>
Cattle and calves	102.7	152.0	183.9	133.6	136.6	133.2	141.8	-2.5%	-6.0%
Hogs	108.0	135.1	107.4	101.8	108.8	102.2	112.2	-6.1%	-8.9%
Chickens, turkeys, chicks, poults	101.7	97.6	95.2	93.8	93.0	95.0	96.3	2.1%	-1.4%
Eggs in shell	106.6	105.0	105.7	107.8	108.5	113.5	106.7	4.6%	6.3%
Unprocessed milk	102.1	104.4	101.7	103.6	102.6	101.6	102.9	-1.0%	-1.2%

**Source:** Statistics Canada and Adapted from Statistics Canada Table: 32-10-0099-01 (accessed: August 1, 2019).

**1** - For grains purchased by the Canadian Wheat Board (CWB) and the Ontario Wheat Producers Marketing Board (OWPMB), prices include initial, adjusted initial, interim and final board payments on a retroactive basis.

## PRICE INDEXES

Category	2013	2014	2015	2016	2017	2018	2018 vs. 2017 % Change	2018 vs. Average % Change	2017 vs. Average % Change
Farm Input Price Index, B.C.	101.5	108.2	112.0	108.0	109.7	114.4	107.9	4.2%	6.0%
Farm Product Price Index, B.C.	102.8	107.1	112.8	110.0	111.2	115.4	108.8	3.8%	6.1%
<b>B.C. Consumer Price Index (CPI)<sup>1</sup></b>									
All Items <sup>2</sup>	99.9	100.9	102.0	103.9	106.1	109.0	102.6	2.7%	6.3%
Food <sup>3</sup>	100.1	101.7	105.7	107.5	108.2	110.1	104.6	1.7%	5.2%
Food purchased from stores	101.3	103.5	108.3	109.9	109.5	110.4	106.5	0.9%	3.7%
Meat	100.6	106.9	115.6	116.6	117.2	118.6	111.4	1.2%	6.5%
Fish, seafood and other marine products	101.6	107.6	108.6	116.7	122.8	123.9	111.5	0.9%	11.1%
Dairy products and eggs	100.5	102.1	103.0	102.9	101.8	102.0	102.0	0.2%	0.0%
Bakery and cereal products (excluding baby food)	101.7	101.7	104.1	105.8	104.6	103.5	103.6	-1.0%	-0.1%
Fruit, fruit preparations and nuts	105.0	107.6	114.1	115.5	115.0	116.6	111.4	1.4%	4.6%
Vegetables and vegetable preparations	105.6	109.0	120.6	123.1	123.0	128.6	116.3	4.5%	10.6%
Other food products and non-alcoholic beverages	98.1	98.0	100.9	102.5	101.5	101.7	100.2	0.2%	1.5%
Food Purchased from Restaurants	97.4	97.8	100.1	102.6	105.3	108.8	100.7	3.3%	8.1%

**Source:** Statistics Canada and Adapted from Statistics Canada. Tables 18-10-0258-01, 18-10-0005-01, and 32-10-0099-0, (accessed: August 1, 2019).

**1** - B.C. Consumer Price Index (CPI) is based on a 2009 basket.

**2** - The eight major components of the Consumer Price Index (CPI) basket are: "food", "shelter", "household operations, furnishings and equipment", "clothing and footwear", "transportation", "health and personal care", "recreation, education and reading", and "alcoholic beverages and tobacco products".

**3** - Food includes non-alcoholic beverages.



## PER CAPITA CONSUMPTION OF SELECTED FOODS IN CANADA

Food Type	2013	2014	2015	2016	2017	2018	2018 vs. 2017 % Change	2018 vs. Average % Change	2017 vs. Average % Change
<b>Red Meats</b>									
Beef (kg)	19.5	18.9	17.3	17.9	17.9	18.1	18.3	0.8%	-1.3%
Pork (kg)	15.9	15.6	17.7	15.8	15.8	16.5	16.2	4.2%	2.0%
Mutton and lamb (kg)	0.9	0.9	0.9	1.0	1.0	1.0	0.9	-4.0%	1.1%
<b>Poultry and Eggs</b>									
Chicken (kg)	19.9	20.2	21.1	21.5	21.6	22.5	20.9	4.4%	8.0%
Turkey (kg)	3.3	3.2	3.3	3.4	3.3	3.4	3.3	2.1%	2.9%
Eggs (dozen)	12.9	13.3	13.9	14.3	14.5	15.0	13.8	4.1%	9.2%
<b>Fish</b>									
Seafish - Fresh and Frozen (kg)	3.8	3.7	3.4	3.7	3.9	3.8	3.7	-3.0%	2.9%
Seafish - Processed (kg)	2.6	2.4	2.7	2.7	2.3	2.5	2.5	7.3%	-1.9%
Shellfish - Fresh (kg)	1.2	1.3	1.2	1.2	1.3	1.5	1.2	17.6%	24.6%
Freshwater Fish (kg)	0.9	0.9	0.9	0.9	0.9	0.9	0.9	0.0%	-1.3%
<b>Dairy Products</b>									
Milk - 3.25% (litres)	9.8	9.7	10.0	10.3	10.0	10.4	9.9	4.2%	4.8%
Milk - 2% (litres)	35.0	34.5	34.7	34.7	33.3	32.8	34.4	-1.4%	-4.7%
Milk - 1% (litres)	16.0	15.0	14.1	13.4	12.4	11.9	14.2	-3.8%	-16.0%
Milk - Skim (litres)	7.2	6.4	5.6	5.1	4.8	4.6	5.8	-3.8%	-21.3%
Cheddar Cheese (kg)	3.3	3.3	3.2	3.6	3.5	4.1	3.4	17.7%	22.2%
Cottage Cheese (kg)	0.7	0.7	0.6	0.6	0.6	0.6	0.6	-1.6%	-2.5%
Frozen Deserts (litres)	6.2	6.8	6.1	6.0	5.8	6.0	6.2	3.6%	-2.5%
Cream, 10%, 18%, 32% and 35% (litres)	8.3	8.4	8.4	8.5	8.7	8.6	8.5	-0.2%	2.0%
Yogurt (litres)	9.9	9.8	11.0	10.8	10.0	9.9	10.3	-7.4%	1.3%
<b>Fruit</b>									
Apples - Fresh (kg)	11.6	11.5	11.1	10.7	11.0	10.0	11.2	-9.1%	10.1%
Blueberries - Fresh (kg)	1.3	1.1	0.8	1.0	1.1	1.2	1.0	11.0%	-9.9%
Cherries - Fresh (kg)	0.8	1.0	0.7	0.8	1.1	1.0	0.9	-14.2%	16.5%
Strawberries - Fresh (kg)	3.8	3.2	3.2	3.3	3.4	3.5	3.4	0.6%	-0.6%
Cranberries - Fresh (kg)	1.8	2.8	2.2	3.2	2.0	2.8	2.4	35.8%	-26.4%
<b>Vegetables</b>									
Tomatoes - Fresh (kg)	8.5	8.6	8.1	8.2	7.9	8.4	8.2	6.5%	1.8%
Mushrooms - Fresh (kg)	2.4	2.4	2.3	2.2	2.2	2.0	2.3	-7.9%	-12.6%
Peppers - Fresh (kg)	4.5	4.3	4.5	4.1	4.4	4.3	4.4	-0.7%	-0.5%
Potatoes, White - Fresh (kg)	26.7	15.9	24.2	25.6	26.4	23.8	23.8	-9.7%	0.3%
Lettuce - Fresh (kg)	9.1	8.7	8.6	8.7	8.5	8.2	8.7	-3.3%	-6.0%
Carrots - Fresh (kg)	7.9	6.8	8.7	7.8	7.2	7.2	7.7	0.1%	-6.0%
Corn - Fresh (kg)	3.6	3.3	3.3	3.1	3.0	2.8	3.3	-6.0%	-13.3%
Onions and shallots - Fresh (kg)	8.7	9.2	9.4	8.8	9.0	8.7	9.0	-3.0%	-3.4%
<b>Fats and Oils</b>									
Butter (kg)	2.6	2.7	2.7	3.2	3.2	3.3	2.9	3.2%	13.3%
Margarine (kg)	3.2	3.0	3.0	2.9	2.8	2.7	3.0	-4.7%	-10.8%
Salad oils (kg)	14.1	14.2	14.2	14.7	15.3	16.2	14.5	5.6%	11.4%
Shortening and shortening oils (kg)	6.7	6.4	6.1	5.9	5.8	5.3	6.2	-8.3%	-14.0%

Food Type	2013	2014	2015	2016	2017	2018	2018 vs. 2017 % Change	2018 vs. Average % Change	2017 vs. Average % Change
<b>Beverages</b>									
Beer (litres) <sup>1</sup>	77.6	75.6	74.6	74.5	72.9	71.2	75.0	-2.3%	-5.1%
Distilled Spirits (litres) <sup>1</sup>	5.5	5.3	5.4	5.4	5.5	5.5	5.4	0.5%	2.2%
Wines (litres) <sup>1</sup>	15.6	15.6	16.1	16.4	16.5	17.1	16.0	3.4%	6.5%
Ciders, Coolers and others (litres) <sup>1</sup>	3.9	4.3	4.6	5.2	5.4	5.8	4.7	6.8%	24.3%
Soft Drinks (litres)	75.6	71.8	68.7	62.7	60.0	58.3	67.8	-2.8%	-14.0%
Juice, all types (litres)	20.4	20.0	19.4	18.7	17.7	17.2	19.2	-2.6%	-10.4%
Milk, all types (litres)	74.1	71.8	71.1	69.8	66.4	65.5	70.6	-1.3%	-7.2%
Tea (litres)	89.6	105.4	84.9	75.3	66.3	63.7	84.3	-4.0%	-24.4%
Coffee (litres)	103.7	103.4	103.6	107.5	107.7	108.5	105.2	0.8%	3.2%

**Source:** Statistics Canada and Adapted from Statistics Canada. Table 002-0011 Cansim database (accessed July 8, 2019).

**1** – Alcoholic beverages data for the Canadians aged 15 years old and over.

**Note** – Consumption estimates have been adjusted for retail, household, cooking and plate loss.

## B.C. CONSUMER AND PROCESSOR PURCHASES OF LOCALLY PRODUCED AGRICULTURE, FOOD AND SEAFOOD

Category	\$ Millions						Average 2012-2016	2017 vs. 2016 % Change	2017 vs. Average % Change
	2012	2013	2014	2015	2016	2017			
Grains, oilseeds & other crops	99	87	40	46	65	6	67	-90.8%	-91.1%
Vegetables	207	132	74	141	133	159	137	19.5%	15.7%
Fruit	34	23	19	13	48	71	27	47.9%	159.1%
Animal feed	706	848	851	866	916	905	837	-1.2%	8.1%
Nursery	142	120	103	77	68	66	102	-2.9%	-35.3%
Livestock	477	474	450	514	492	526	481	6.9%	9.3%
Dairy	825	809	848	818	764	666	813	-12.8%	-18.1%
Eggs	113	119	116	123	118	124	118	5.1%	5.3%
Non food	42	40	49	50	43	44	45	2.3%	-1.8%
Seafood	310	251	376	353	534	446	365	-16.5%	22.3%
Milled products	268	331	268	240	311	388	284	24.8%	36.8%
Other food	303	322	359	400	465	507	370	9.0%	37.1%
Confectionery	140	116	43	27	23	24	70	4.3%	-65.6%
Non alcoholic beverages	75	101	171	108	115	113	114	-1.7%	-0.9%
Meat	798	805	882	884	843	794	842	-5.8%	-5.7%
Bread	162	195	234	241	297	367	226	23.6%	62.5%
Coffee and tea	38	34	61	58	63	68	51	7.9%	33.9%
Alcohol	549	698	820	870	1,056	1,109	799	5.0%	38.9%
Tobacco	5	1	0	0	0	0	1	na	-100.0%
<b>Total</b>	<b>5,289</b>	<b>5,505</b>	<b>5,764</b>	<b>5,828</b>	<b>6,356</b>	<b>6,383</b>	<b>5,748</b>	<b>0.4%</b>	<b>11.0%</b>

**Source:** BC Stats and Adapted from BC Stats. Estimates provided March 27, 2019.

# END NOTES

**F** – Data is too unreliable to be published.

**na** – Data is not available, or no longer collected.

**x** – Data is suppressed to meet the confidentiality requirements of the federal Statistics Act.

**Average 2013-2017** represents the average calculated on the data available for the time period .

**Farm-gate value** is the value received by producers at the point of first transaction, when ownership first changes hands. This value excludes any separately billed costs such as delivery, storage, marketing and administrative.

**Farm Cash Receipts (FCR)** represents the sale of agricultural commodities, program payments received from government agencies, and payments received from private crop and livestock insurance programs within the calendar year. The method for establishing FCR is based on the system of National Accounts. As such, farm-to-farm sales between provinces are included as are all sales outside the sector, while all inter-farm sales within a province are excluded.

**Land in Agricultural Land Reserve (ALR)** Reported land in the ALR is based on manual mapping method (Dot Matrix or electronic planimeter 1974). Since April 2012, the Agricultural Land Commission adopted the more precise Geographic Information Systems (GIS) method of reporting the ALR area. In this new reporting system, the provincial ALR is smaller than previously reported by about 137,000 hectares. It is important to note that the physical (on the ground) area and boundary of the ALR has not changed, except for where approvals were given for inclusions and exclusions of land. Only the methodology in which the ALR area is accounted for has changed, to reflect the improved accuracy available using digital mapping information.

**Totals** may not add up due to non-availability of detailed data, confidentiality or rounding on conversion.









### DATA SOURCES

Production, farm cash receipts, manufacturing shipment values, and employment data sourced from Statistics Canada.

Specific industry data obtained from industry associations, where necessary.

### CONTACT INFORMATION

This report is available online at <http://www2.gov.bc.ca/gov/content/industry/agriculture-seafood/statistics/industry-and-sector-profiles>

For more information on B.C. agriculture, food and seafood please contact:

#### AgriService BC

Telephone: 1-888-221-7141

Email: [AgriServiceBC@gov.bc.ca](mailto:AgriServiceBC@gov.bc.ca)

For more information on the Province of British Columbia, please visit <http://www2.gov.bc.ca/gov/content/home>

Fall 2019



BRITISH  
COLUMBIA

Canada