



Regional District of East Kootenay



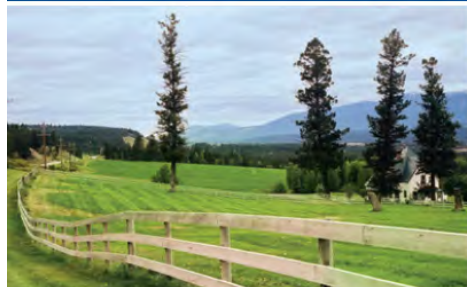
Jurisdictional Makeup

Member Municipalities: Canal Flats, Cranbrook, Elkford, Fernie, Invermere, Kimberley, Radium Hot Springs & Sparwood.

Population (2011) ¹	#	56,685
Jurisdictional Land Area ²	ha	2,754,269
Agricultural Land Reserve (2012) ³	ha	265,576
Population Increase (2006-2011) ⁴	#	1,200
Population Increase (1971-2011) ⁴	#	17,255

Census of Agriculture Data		1996	2001	2006	2011
Total Farmland Area ⁵	ha	80,526	99,234	97,662	80,072
Number of Farms	#	474	418	395	396
Average Farm Size ⁴	ha	169.9	237.4	247.2	202.0
Farmland Use					
Crops ⁶	ha	10,223	10,789	10,118	9,817
Summerfallow	ha	173	127	54	55
Tame or Seeded Pasture	ha	6,700	8,787	5,887	5,415
Natural Land for Pasture	ha	45,231	63,227	64,286	48,831
All Other Land ⁷	ha	18,199	16,303	17,316	15,954
Total		80,526	99,234	97,662	80,072
Crop Area					
Hay Crops ⁸	ha	9,360	9,483	9,308	9,166
Field Crops ⁸	ha	682	1,204	569	549
Fruits, Berries & Nuts	ha	31	20	18	10
Vegetables	ha	8	8	8	18
Nursery Products	ha	18	18	66	30
Sod Grown for Sale	ha	0	0	x	x
Greenhouse Flower Production	m ²	x	17,095	12,232	16,508
Greenhouse Vegetable Production	m ²	7,776	2,966	x	x
Other Greenhouse Production	m ²	x	280	na	x
Mushrooms	m ²	0	0	0	0
Christmas Trees	ha	6,902	3,921	2,063	1,242
Area Irrigated	ha	7,152	6,870	6,583	6,774
Total Farm Capital		\$269,614,765	\$351,686,072	\$523,517,241	\$680,691,763
Total Gross Farm Receipts		\$13,872,676	\$14,899,563	\$15,570,846	\$14,504,239
Total Wages and Salaries Paid		\$20,961,293	\$1,581,676	\$2,222,285	\$2,202,365

Regional District of East Kootenay



Animals on Farms	1996		2001		2006		2011	
	Farms	Number	Farms	Number	Farms	Number	Farms	Number
Hens & Chickens	88	16,419	113	10,061	72	4,600	65	3,725
Turkeys	26	829	26	995	9	127	9	122
Total Other Poultry	55	584	31	370	16	243	9	333
Cattle & Calves	245	29,390	214	26,187	193	23,360	148	17,320
<i>Dairy Cows</i>	21	260	8	35	2	x	2	x
<i>Beef Cows</i>	203	13,084	179	12,131	160	x	117	x
Pigs	22	199	25	553	13	77	12	62
Sheep & Lambs	35	737	34	1,194	25	758	19	375
Horses & Ponies	241	1,906	220	1,977	229	2,051	200	1,908
Goats	37	227	22	426	14	92	15	187
Wild Boar	na	na	0	0	0	0	0	0
Mink	1	x	0	0	0	0	0	x
Fox	0	0	0	0	na	na	na	na
Bison	0	0	1	x	1	x	2	x
Deer	0	0	0	0	0	0	0	0
Llamas & Alpacas	13	127	21	103	19	105	14	75
Rabbits	36	220	7	258	6	169	3	x
Colonies of Bees for Honey	11	448	10	332	9	150	14	295

Credits

Source: Statistics Canada. Census of Agriculture, 1996, 2001, 2006, 2011, unless otherwise specified.

Prepared by Ministry of Agriculture, Statistics and Research. January 2013

End Notes

1 Source: Statistics Canada. Census of Population.

2 Source: Statistics Canada, Geosuite, Land Area file: <http://www12.statcan.gc.ca/census-recensement/2006/ref/dict/tables/table-tableau-7-eng.cfm>

3 Source: Agricultural Land Commission. Agricultural Land Reserve as of January 1, 2008 (for 2006) and April 1, 2012 (for 2011).

4 Source: Ministry of Agriculture, Adapted from Statistics Canada Censuses.

5 Total farmland area includes both workable and non-workable land on farm operations in B.C.

6 Crops includes: hay crops, field crops, total vegetables, total fruits and nuts, sod and nursery products.

7 Other farmland area includes: woodland, wetlands, Christmas tree land, land on which farm buildings, barnyards, lanes, home gardens, greenhouses and mushroom houses are located, and idle land.

8 Does not include those crop areas suppressed to meet the confidentiality requirements of the Statistics Act.

Notes

x - indicates farms reporting but information suppressed to meet the confidentiality requirements of the Statistics Act

na - indicates data is not available for a specific reference period



Ministry of
Agriculture