

## What does the Plant Health Laboratory Do?

The plant health staff are trained to identify problems associated with fungi, bacteria, viruses, insects and nematodes

- Diagnose infectious plant diseases (common, uncommon or new)
- Support surveillance of plant pests throughout B.C.
- Provide information on pest trends and potential new problems.
- Provide insect identifications.
- Conduct educational programs on basic plant health problem identification tools and provide outreach support on new and emerging plant health issues.

## What does the Plant Health Laboratory Not Do?

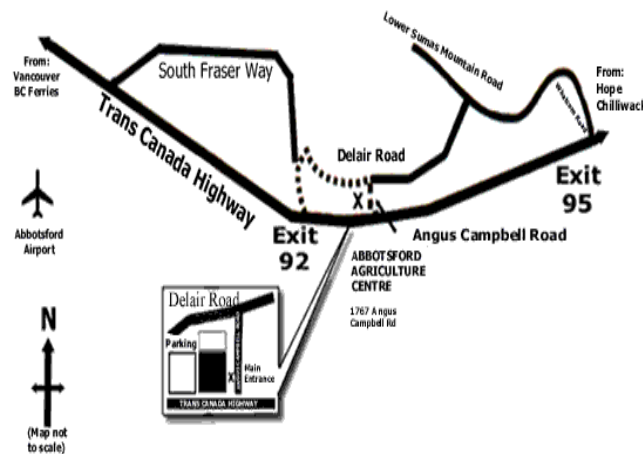
- Identify or isolate fungi or bacteria from soil, water, feed or air.
- Test viability of plant tissue.
- Analyze plant tissue or soil for nutrients.
- Test for pesticide residue or pest resistance to pesticides.
- Isolate or identify human or animal pathogens.
- Identify disease from dead or decomposing plant material.
- Identify mushrooms.
- Identify strain, race, mating type, pathovar or anastomosis group of pathogens.
- Identify plant species and/or variety.

## Hours of operation:

8:30 A.M. to 4.30 P.M.

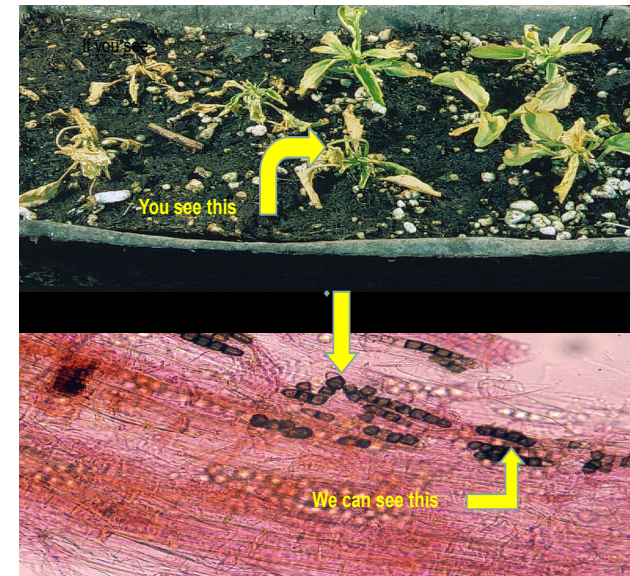
Monday to Friday

Call Toll Free: 1-800-661-9903



## British Columbia Ministry of Agriculture

## Plant Health Laboratory



Plant and Animal Health Branch  
B.C. Ministry of Agriculture  
Abbotsford Agriculture Centre  
1767 Angus Campbell Road  
Abbotsford, BC V3G 2M3  
**Web Address:**  
[www.al.gov.bc.ca/cropprot/lab.htm](http://www.al.gov.bc.ca/cropprot/lab.htm)

# The Plant Health Laboratory

## Vision

B.C.'s agricultural and natural plant resources are protected from plant health threats.

## Mission

Contribute to the British Columbia's environmental, social and economic goals and values by performing state-of-the-art plant health diagnostics and contributing to surveillance of plant health threats, associated research and educational programs.

## The Plant Health Laboratory

An accurate and timely diagnosis is a crucial first step to implementing appropriate pest management strategies. The B.C. Ministry of Agriculture's (AGRI) Plant Health Laboratory, located in the Abbotsford Agriculture Centre, operates throughout the year to provide plant disease and insect identification support to commercial growers, ministry staff, researchers, consultants and sales representatives serving the agriculture industry in B.C. The Plant Health Laboratory has been providing plant health diagnostics and contributing to pest surveillance for B.C. since 1967. The lab is fully equipped with state-of-the-art diagnostic technology to assist you in identifying the cause of your plant health problems.

## Who may submit samples?

If you are a producer, industry association, government agency, agribusiness (consultant, sales representative and landscaper) and/or home gardener, you can send samples to the lab.

## What to submit – Sample and related information

### How to submit samples

Specimens must be fresh and representative of the range of symptoms that are seen in the field. A dried out sample leaves little to work with. A rotten deteriorated sample cannot be diagnosed.

Instructions on how to package and send a sample to the lab are available on the Plant Health Lab Submission Form (available from your local B.C. Ministry of Agriculture district office, at the back of the Production Guides or our web page). Fill out the lab diagnostic submission form as thoroughly as possible to assist us in getting a better picture of what is happening in the field. Send (drop in, mail or courier) packaged samples along with a completed submission form and appropriate payment to the address on the front page.

## What information should you provide?

Fill and attach Plant Lab Submission Form to provide:

Personal contact information (address, phone, fax or email)

Detailed information about the problem such as:

- Details on symptoms
- When was problem first noticed?
- Is the problem spreading?
- How many plants or percentage of field are affected?
- Type of plant, age, condition of surrounding plants
- Site description (drainage, exposure, weather, irrigation etc.)
- Pesticide and fertilizer use (type, rate and date)
- Past and future crops grown on site

<http://www.al.gov.bc.ca/cropprot/lab.htm>

## Fees

The Plant Health Laboratory charges a fee for providing diagnostic services to its clients. Current fees are listed on the lab diagnostic submission form (see web page).

## Who receives the diagnostic report?

Results are sent to the submitter unless otherwise requested. Information on individual submissions is kept confidential.