



Requirements for establishing Lines of Separation (LOS) and Cleaning & Decontamination Stations (C&D)

January 7, 2025

BC Dairy has provided producers with resources for establishing biosecurity zones on their farms as part of on-farm biosecurity planning. These resources assist producers in determining the areas on their farms that fall into the “Controlled Access Zone” (CAZ) and the “Restricted Access Zone” (RAZ).

If your farm tests positive for HPAI, you will also be required to establish a “Line of Separation” (LOS) within the CAZ that serves to restrict access into the farmyard to necessary movement only. This is similar to a “transition zone” on your biosecurity plan, but can be located within the CAZ, versus on its perimeter. Access points on the LOS will be required to have “Cleaning and Decontamination Stations” (C&D stations) for traffic moving into the restricted area beyond the LOS (see Appendices A, B, and C for examples).

Farms that test positive for HPAI will be required to establish LOS, access points, and C&D stations on their farm to continue to have milk pick-up. Decontaminating all vehicles, including milk trucks, as they enter and leave your premises is essential to preventing the spread of HPAI between dairy farms.

Designation of a Line of Separation and Access Points

A line of separation (LOS) creates a functional zone with a distinguishable perimeter that includes business critical areas of the dairy operation within it. This will look different for every operation but for some operations the LOS perimeter may extend all the way to the property line depending on the facility layout. Some operations with more open space or areas not considered business critical such as housing, other businesses, long-term equipment storage, non-utilized space, fields, etc., may choose to shrink the LOS to a smaller more manageable area. The LOS separates the business-critical areas from areas unrelated to dairy production on that site or adjoining properties.

The LOS interior (which includes the entire RAZ and some, if not all, the CAZ) is comprised of all essential operation structures and high traffic areas involved in the daily function of the dairy operation. This would usually include, but may not be limited to, the milk house, animal housing areas, animal movement pathways, traffic pathways, milking barn/parlor, manure storage, feed storage, calf housing, equipment storage, medical supplies, generators, pump rooms, etc.

The LOS perimeter should be visibly marked with proper signage and could consist of a physical barrier to prevent access, except through designated LOS access points. At a minimum, the LOS should be documented and visibly clear in biosecurity plans and visibly clear to those crossing it. All access points into or out of the interior area should be secured and have appropriate signage.

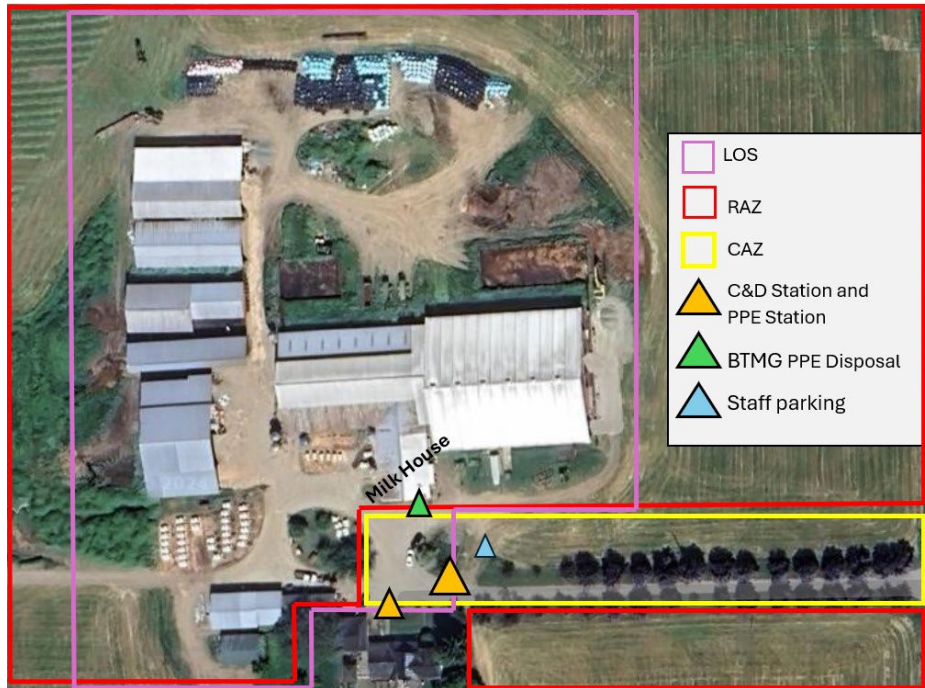
Ministry of Agriculture and Food
Office of the Chief Veterinarian & Animal Health Center

Mailing Address:
1767 Angus Campbell Rd
Abbotsford, BC V3G 2M3
Telephone: 604 556-3003
Toll Free: 1-800-661-9903

Web Address:
<https://www2.gov.bc.ca/gov/content/industry/agriculture-seafood/animals-and-crops/animal-health/office-of-the-chief-veterinarian>



Once the LOS is established, movement into and out of the secure area should be limited to only necessary movement. Necessary employees, service providers, and visitors must be trained on and follow procedures for entering the LOS. People, vehicles, and items moving through LOS access points must follow specific biosecurity steps (see *Cleaning and Decontaminating Practices and Procedures* below). Non-essential deliveries or pick-ups that do not need to cross the LOS should leave or pick up their delivery outside of the LOS in a designated area/designated parking area.



Cleaning and Decontaminating Practices and Procedures

Cleaning and decontaminating (C&D) are physical or chemical processes to kill or remove microorganisms and are vital for disease eradication efforts. This is generally a two-step process involving cleaning to remove debris, followed by the use of a disinfectant to kill remaining microorganisms. Note: when using any C&D product, follow directions and safety precautions on the label.

The LOS access point must contain a C&D station with the means to remove visible debris and then disinfect vehicles, equipment, and items needing to cross the LOS, using any disinfectant that is commercially available, site-relevant, and rated to address influenza A viruses. The C&D station must also include a personal protective equipment (PPE) area, trash bin for PPE disposal, footwear disinfection station, hand sanitization station, and visitor logbook (see below for specific guidance on logbooks). Crossing the LOS requires at a minimum a change of PPE, use of footbath/spray

Ministry of Agriculture and Food
Office of the Chief Veterinarian & Animal Health Center

Mailing Address:
1767 Angus Campbell Rd
Abbotsford, BC V3G 2M3
Telephone: 604 556-3003
Toll Free: 1-800-661-9903

Web Address:
<https://www2.gov.bc.ca/gov/content/industry/agriculture-seafood/animals-and-crops/animal-health/office-of-the-chief-veterinarian>



down, and use of hand sanitizer or hand washing. The C&D station should be operated and maintained by individuals (i.e. the biosecurity manager) who have received training in the proper use of PPE and the principles of C&D.

Special Provisions for Milk Truck Drivers: Raw milk from HPAI positive herds can be highly concentrated with the HPAI virus, therefore, additional precautions must be taken for milk truck drivers required to take milk samples from and transfer the raw milk to their milk trucks. BTMGs will be required to collect PPE from the main C&D station at the LOS access point and will dispose of the PPE at the milk house once milk pick-up is complete. A PPE disposal station must be established at the milk house for this purpose. Please refer to the “Biosecurity Requirements for Milk Pick-Up” document.

Vehicles: Vehicles should be cleaned between visits to animal production facilities. It is best to clean the vehicle upon leaving one operation and if possible, prior to entering the next. Cleaning should include the tires and interior cab floor mats if the vehicle crosses the LOS and the occupant(s) exited the vehicle.

Equipment: Keep all equipment clean. Use disposable equipment or disinfect all equipment prior to entering and leaving the operation property. Even if equipment did not appear to come into contact with animals or their secretions, disease agents may still be present on equipment that crossed the LOS through environmental contamination. Clean and disinfect all equipment before taking it off the premises. Limit movement and sharing of equipment and people between any other dairy, livestock, or poultry operations.

People, Hands: Provide hand sanitizer and encourage use; provide disposable gloves and encourage use. If possible, provide a handwashing station - thoroughly wash hands with antibacterial soap when entering and leaving LOS access points. Wearing disposable gloves is not always a substitute for hand washing; best practices suggest hands should be washed even if gloves are worn. Please refer to the “Best Milking Practices for Identifying HPAI and Preventing Spread to Humans or Other Animals” document for keeping milking staff safe.

Staff / Visitor Parking Outside the LOS and RAZ: Establishing a parking area outside the LOS and RAZ will eliminate the need to C&D vehicles that do not need to cross the LOS. Staff and visitors can cross the LOS and attend the C&D Station on foot, sign the visitor logbook, clean and disinfect footwear, don clean clothing if necessary, and gather any required PPE, before proceeding into the RAZ.

General: It is recommended to use trailers to transport only your own livestock; disinfect trailer interiors that were used to haul cattle, especially if the cattle were from other operations with unknown health status. Do not allow visitors or drivers access to animal housing, animals, or raw milk products to be fed to calves due to high viral load. Avoid walking through known contaminated

Ministry of Agriculture and Food
Office of the Chief Veterinarian &
Animal Health Center

Mailing Address:
1767 Angus Campbell Rd
Abbotsford, BC V3G 2M3
Telephone: 604 556-3003
Toll Free: 1-800-661-9903

Web Address:
<https://www2.gov.bc.ca/gov/content/industry/agriculture-seafood/animals-and-crops/animal-health/office-of-the-chief-veterinarian>



areas; avoid direct contact with contaminated animals, items, surfaces, and vehicles; and do not carry personal items (e.g., cigarettes, gum, food, drink, etc.) into any known contaminated areas.

Establishment of a Logbook

Every person crossing the LOS on foot or exiting their vehicle inside the LOS must complete an entry in the logbook. The logbook should be monitored and maintained by the biosecurity manager to ensure accurate completion. Information recorded for each entry should include:

1. Date, and entry and departure times.
2. Names and contact information of people crossing the LOS (if they exit their vehicle or are on foot).
3. The general purpose for crossing.
4. Additional information recorded for each entry could include any materials, products, or equipment that accompanied the entry.

Ministry of Agriculture and Food
Office of the Chief Veterinarian &
Animal Health Center

Mailing Address:
1767 Angus Campbell Rd
Abbotsford, BC V3G 2M3
Telephone: 604 556-3003
Toll Free: 1-800-661-9903

Web Address:
<https://www2.gov.bc.ca/gov/content/industry/agriculture-seafood/animals-and-crops/animal-health/office-of-the-chief-veterinarian>