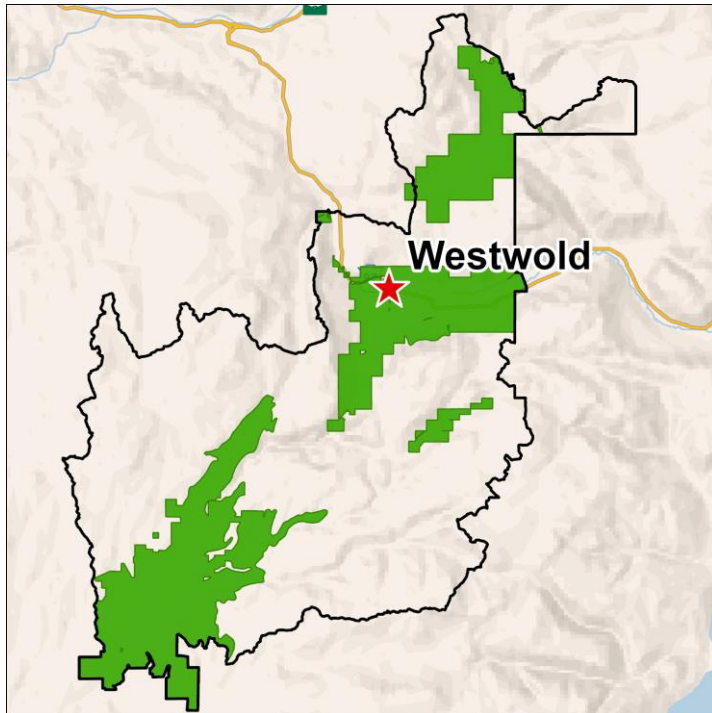


*Public Notice*

**Agricultural Land Inventory: Salmon River Watershed 2026**



*Survey includes ALR and other parcels with observed farmland.*

The BC Ministry of Agriculture and Food, and the Partnership for Water Sustainability in BC are completing an Agricultural Land Inventory (ALI) across the Salmon River Watershed.

The ALI program started in Pitt Meadows in 1996 to support the Ministry's Strengthening Farming Program. Since then, ALIs have provided insight into the current state of the farming landscape across the province, including within the Agricultural Land Reserve (ALR).

To complete an ALI, Professional Agrologists and GIS technicians use imagery to map crops, irrigation, natural vegetation, buildings, livestock facilities, and farm practices within the ALR and parcels where significant farming is observable.

Field surveys are conducted when necessary to verify imagery, with careful consideration of cost and the adequacy of available advanced imagery. No field surveys will be undertaken in this area.

Agricultural Land Inventory data has been used to:

- Model potential impacts of climate change and different adaptation strategies;
- Model agricultural water demand for current and future climates;
- Inform the development of municipal Official Community Plans and Agriculture Area Plans;
- Understand the extent of actively farmed land and other major activities on the ALR land base;
- Understand impacts to agriculture from new developments, bylaws, or regulations; and
- Understand potential economic impacts associated with reduced water availability.

For further information, contact:

*Will Shaw, PAg  
Regional Agrologist  
BC Ministry of Agriculture and Food  
Kamloops  
250-795-4218  
[William.Shaw@gov.bc.ca](mailto:William.Shaw@gov.bc.ca)*

Or *Andrea Stevenson, PAg  
ALI Agrologist  
BC Ministry of Agriculture and Food  
Nanaimo  
778-666-0573  
[Andrea.Stevenson@gov.bc.ca](mailto:Andrea.Stevenson@gov.bc.ca)*

Or visit: <https://www2.gov.bc.ca/gov/content/industry/agriculture-seafood/agricultural-land-and-environment/agricultural-land-use-inventories>

**This survey is subject to the Freedom of Information and Protection of Privacy Act.**

This project was funded in part by the governments of Canada and British Columbia under the Sustainable Canadian Agricultural Partnership, a federal-provincial-territorial initiative.