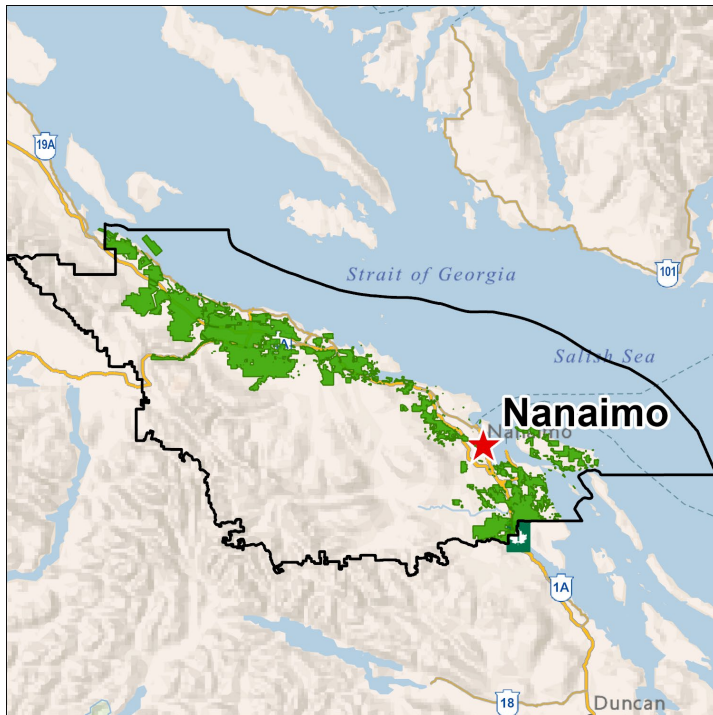


*Public Notice*

**Agricultural Land Inventory: Regional District of Nanaimo 2026**



*Survey includes ALR and other parcels with observed farmland.*

The BC Ministry of Agriculture and Food, and the Partnership for Water Sustainability in BC are completing an Agricultural Land Inventory (ALI) across the Regional District of Nanaimo (RDN).

The ALI program started in Pitt Meadows in 1996 to support the Ministry’s Strengthening Farming Program. Since then, ALIs have provided insight into the current state of the farming landscape across the province, including within the Agricultural Land Reserve (ALR).

To complete an ALI, Professional Agrologists and GIS technicians perform visual observations to help confirm mapped crops, irrigation, natural vegetation, buildings, livestock facilities, and farm practices within the ALR and parcels where significant farming is observable.

Visual observations are conducted only from public roads using vehicles marked with “Government of BC” signs.

Agricultural Land Inventory data has been used to:

- Model potential impacts of climate change and different adaptation strategies;
- Model agricultural water demand for current and future climates;
- Inform the development of municipal Official Community Plans and Agriculture Area Plans;
- Understand the extent of actively farmed land and other major activities on the ALR land base; and
- Understand impacts to agriculture from new developments, bylaws, or regulations.

Watch for survey crews making frequent stops between the hours of 7:00 a.m. to 6:00 p.m. across the region from **July 8<sup>th</sup> to July 31<sup>th</sup>**.

For further information, contact:

*Corrine Roesler, PAg*  
*BC Ministry of Agriculture and Food*  
*Abbotsford*  
*778-666-0569*  
[Corrine.Roesler@gov.bc.ca](mailto:Corrine.Roesler@gov.bc.ca)

Or *AgriServiceBC*  
*1-888-221-7141*  
[agriservicebc@gov.bc.ca](mailto:agriservicebc@gov.bc.ca)

Or visit: <https://www2.gov.bc.ca/gov/content/industry/agriculture-seafood/agricultural-land-and-environment/agricultural-land-use-inventories>

**This survey is subject to the Freedom of Information and Protection of Privacy Act.**

This project was funded in part by the governments of Canada and British Columbia under the Sustainable Canadian Agricultural Partnership, a federal-provincial-territorial initiative.