

Farming for Info:

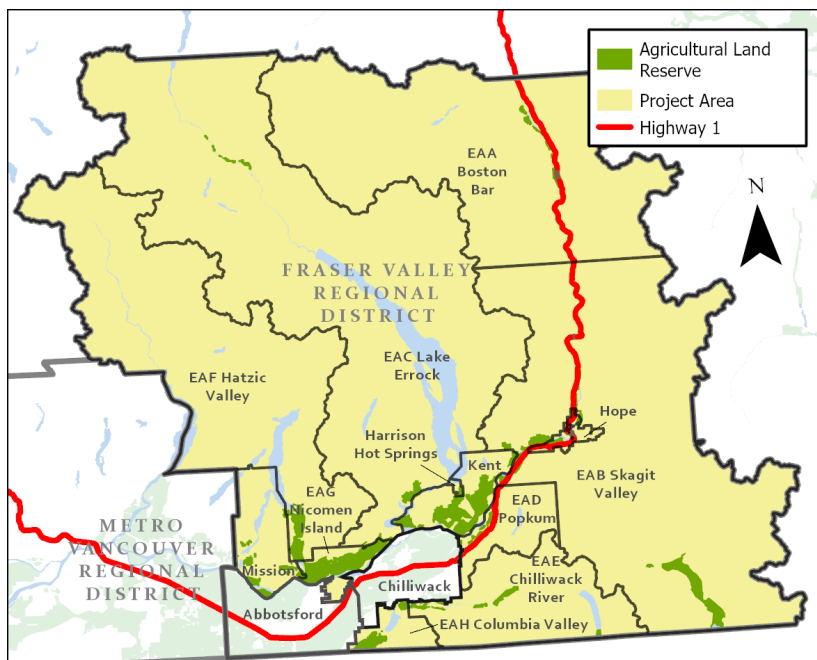
Agrologists coming to a field near you

The BC Ministry of Agriculture and Food, and the Partnership for Water Sustainability in BC are completing an Agricultural Land Use Inventory (ALUI) across much of the Fraser Valley Regional District.

Agrologists and technicians are mapping crops, irrigation, natural vegetation, buildings, livestock, and farm practices in the Agricultural Land Reserve (ALR) and parcels outside the ALR where farming is observed.

Ministry representatives will be navigating public roads and observing farmland with binoculars from government vehicles with “BC Ministry of Agriculture and Food” signage.

Watch for survey crews making frequent stops across the Fraser Valley Regional District excluding Abbotsford and Chilliwack between **June 1st and September 15th, 2023**.



Survey includes ALR plus other parcels where farming is observed

For further information, contact:

Kevin Eastwood, PAg
BC Ministry of Agriculture and Food
Abbotsford
778.752.5900
Kevin.Eastwood@gov.bc.ca

Corrine Roesler, PAg
BC Ministry of Agriculture and Food
Abbotsford
778.666.0569
Corrine.Roesler@gov.bc.ca

AgriServiceBC
1-888-221-7141
agriservicebc@gov.bc.ca

Agricultural Land Use Inventory data will provide insight into the current state of farmland and changes since the previous regional inventories from 2011 to 2013. The data may be used to:

- Inform the development of municipal Official Community Plans and Agriculture Area Plans;
- Measure the extent of actively farmed land and identify other major activities on the land base;
- Investigate impacts to agriculture from new developments, bylaws or regulations;
- Enable scientific estimates of agricultural water demand for current and future climates; and
- Model potential impacts of climate change and different adaptation strategies.

To learn more about the ALUI program visit: <https://www2.gov.bc.ca/gov/content/industry/agriculture-seafood/agricultural-land-and-environment/strengthening-farming/planning-for-agriculture/agricultural-land-use-inventories>

This survey is subject to the Freedom of Information and Protection of Privacy Act