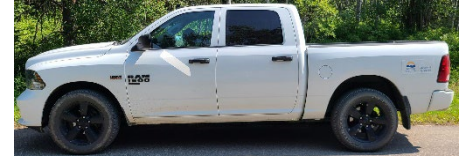


Regional District of Fraser-Fort George Agricultural Land Use Inventory 2023

Farming for Info: Agrologists coming to a field near you

The BC Ministry of Agriculture and Food, and the Partnership for Water Sustainability in BC are completing an Agricultural Land Use Inventory (ALUI) across the Regional District of Fraser-Fort George.



BC Plate SN 0817

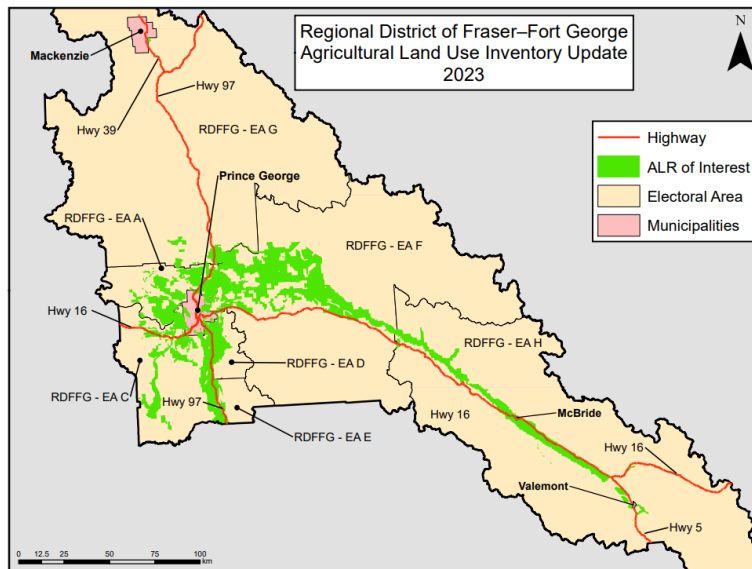
Agrologists and technicians are mapping crops, irrigation, natural vegetation, buildings, livestock facilities, and farm practices in the Agricultural Land Reserve (ALR) and parcels outside the ALR where farming is observed.

Ministry representatives will be using public roads to observe farmland with binoculars from a **white Dodge Ram** or **black Mitsubishi RVR** or other vehicle marked with "Ministry of Agriculture and Food" signs.



BC Plate ME1 94C

Watch for survey crews making frequent stops across the Regional District of Fraser-Fort George **July 4th to September 15th 2023**.



Survey includes ALR plus other parcels where farming is observed

For further information, contact:

Corrine Roesler, PAg
BC Ministry of Agriculture and Food
Abbotsford
778-666-0569
Corrine.Roesler@gov.bc.ca

Or

AgriServiceBC
1-888-221-7141
agriservicebc@gov.bc.ca

Agricultural Land Use Inventory data will provide insight into the current state of farmland and enable observation of future changes. The data may be used to:

- Inform the development of municipal Official Community Plans and Agriculture Area Plans;
- Measure the extent of actively farmed land and identify other major activities on the land base;
- Investigate impacts to agriculture from new developments, bylaws or regulations;
- Enable scientific estimates of agricultural water demand for current and future climates; and
- Model potential impacts of climate change and different adaptation strategies.

To learn more about the ALUI program visit: <https://www2.gov.bc.ca/gov/content/industry/agriculture-seafood/agricultural-land-and-environment/strengthening-farming/planning-for-agriculture/agricultural-land-use-inventories>

This survey is subject to the Freedom of Information and Protection of Privacy Act