

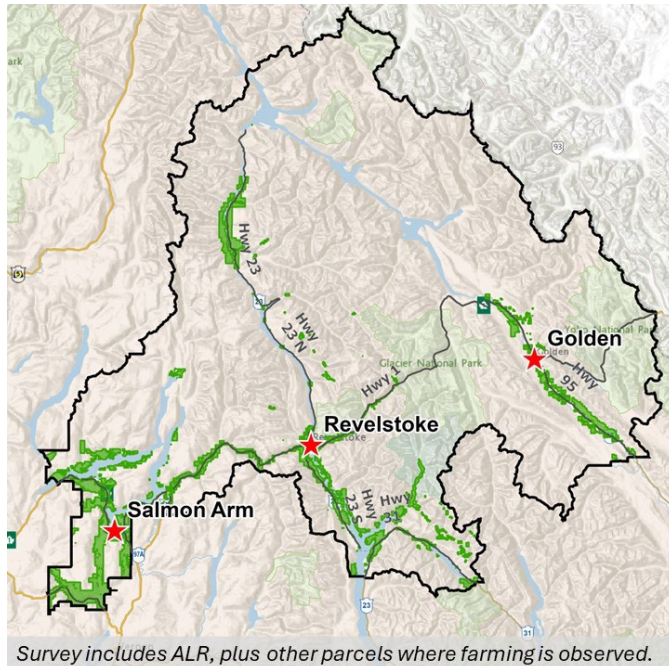
Farming for Info: Agrologists coming to a field near you

The BC Ministry of Agriculture and Food, and the Partnership for Water Sustainability in BC are completing an Agricultural Land Use Inventory (ALUI) across the Columbia-Shuswap Regional District.

Agrologists and technicians are mapping crops, irrigation, natural vegetation, buildings, livestock facilities, and farm practices in the Agricultural Land Reserve (ALR) and parcels outside the ALR where farming is observed.

Ministry representatives will use public roads to observe farmland from a **grey Toyota Highlander, black Dodge Ram 1500, or silver Dodge Ram 1500** marked with "Ministry of Agriculture and Food" signs.

Watch for survey crews making frequent stops across the region from **July 2nd to July 19th**.



For further information, contact:

*Corrine Roesler,
PAg
BC Ministry of
Agriculture and
Food
Abbotsford
778-666-0569*

Corrine.Roesler@gov.bc.ca

Or

*AgriServiceBC
1-888-221-7141
agriservicebc@gov.bc.ca*



BC Licence Plate SL2 47B



BC Licence Plate SN 0816



BC Licence Plate VS 0670

Agricultural Land Use Inventory data will provide insight into the current state of farmland and enable observation of future changes. The data may be used to:

- Model potential impacts of climate change and different adaptation strategies;
- Model agricultural water demand for current and future climates;
- Inform the development of municipal Official Community Plans and Agriculture Area Plans;
- Measure the extent of actively farmed land and identify other major activities on the land base; and
- Investigate impacts to agriculture from new developments, bylaws, or regulations.

To learn more about the ALUI program visit:

<https://www2.gov.bc.ca/gov/content/industry/agriculture-seafood/agricultural-land-and-environment/strengthening-farming/planning-for-agriculture/agricultural-land-use-inventories>

This survey is subject to the Freedom of Information and Protection of Privacy Act.

This project was funded in part by the Governments of Canada and British Columbia under the Sustainable Canadian Agricultural Partnership, a federal-provincial-territorial initiative.